

LIMOUSIN



in the
END
it's the
quality
that
counts

**BRITISH LIMOUSIN CATTLE SOCIETY
SHOW & SALE
Ballymena, Northern Ireland**



Show and Sale of Bulls and Females

Kindly sponsored by Francis Connon

JUDGING: Monday 6th May at 10.00am

AUCTION: Monday 6th May at 1.00pm

Under Society Rules and NBA Warranties and Sale Conditions

Monday 6th May 2013

Ballymena Livestock Mart

Printed by Minprint (028) 90705205

£1

LIMOUSIN

LIMOUSIN

when you weigh it all up



Quality Sucklers

Quality Beef



**LIMOUSIN ...
the top maternal and
the top terminal sire**

No. 1
on
both
sides
of the
scale

LIMOUSIN



5 STAR PERFORMERS

KILL OUT %

**EASY
CALVING**

**QUALITY
BEEF**

GROWTH

MILKINESS

The ideal suckler

**The ideal
prime beef carcass**



**1st
for
Beef
Quality**

**1st
for
Maternal**

CATALOGUE
for
THE BRITISH LIMOUSIN
CATTLE SOCIETY LTD

Show & Sale
of
90 Pedigree Limousin Bulls
& 38 Pedigree Limousin Females

(Sold under BLCS Auction Rules & Conditions of Sale)

BLCS Chief Executive: Iain Kerr

Telephone: 02476 696500 Fax: 02476 696716

E-mail: info@limousin.co.uk

www.limousin.co.uk

AVENUE Q, NATIONAL AGRICULTURAL CENTRE,
STONELEIGH, KENILWORTH,
WARWICKSHIRE CV8 2RA

The Northern Ireland Limousin Cattle Club Show and Sale Arrangements

Judge:	Mr John Green
Judges Steward:	Mr John Gordon
Ring Steward:	Mr Derek Frew
Inspectors:	Mr Tom Clyde
Weight Inspector:	Mr David Rankin
Vet:	Mr James Bryson MRCVS
Club Contacts:	Mr Henry Savage (Chairman) 00353 86226 6098 and Mrs Heather Hume 07850 603023
Show Stewards:	NI Committee 07521 670141
Club Secretary:	Mrs Heather Hume
Sponsors:	Connon General Merchants - Ballymena

ARRANGEMENTS FOR STOCK Monday 6th May 2013

– Centre Open 6.30 am –

Inspection will take place between 7.00 am and 9.00 am
Cattle must be presented for inspection before 9.00 am after which time
a fee of £20 will be charged by the Vet to the Exhibitor.

Judging 10.00 am

Auction 1.00 pm

Upset Prices – 1500 guineas on each Bull presented for sale and
800 guineas for Females over one year of age

A User's Guide to Estimated Breeding Values

Contents

1. Estimated Breeding Values (EBVs)
2. How are EBVs Calculated?
3. Breeding Indexes
4. Accuracy
5. EBV Indexes
6. 200 Day Milk
7. How to Use EBVs and Indexes
8. Understanding Sale Cards and Catalogues
9. EBVs and Pedigrees Just a Click Away
10. Further Information

1. Estimated Breeding Values

Many factors influence the appearance and performance of a bull, so selecting by eye alone can be misleading. The only accurate way of assessing the genetic potential of an animal (i.e. what it can pass on to its calves) is by using Estimated Breeding Values (EBVs) and Indexes. These are produced by Signet using a system known as BLUP (Best Linear Unbiased Predictor) and are calculated from animals' individual performance records as well as those of all their known relatives, where the effects of the environment (feeding, management, disease climate etc) are sifted out to leave an estimate of the genetic value for each trait, as follows.

EBV	What Does the EBV Indicate?	Look for...
Birth Weight (kg)	Genetic potential for calf weight at birth	High negative EBVs if you want low calf birth weights
Calving Ease (%)	Ease with which a bulls progeny will be born	High positive EBVs if you want less assisted calvings
Maternal Calving Ease (%)	Ease with which a bulls daughters will calve	High positive EBVs if you want less assisted calvings
Gestation Length (days)	Genetic potential for gestation length	High negative EBVs if you want short gestation lengths
200 Day Milk (kg)	The maternal component of 200 day growth (i.e. the contribution that the milking and maternal abilities of a bull's daughters make towards their calves' growth at 200 days of age)	High positive EBVs if you want daughters to wean heavier calves
200 Day Weight (kg)	Genetic potential for growth from birth to 200 days of age	High positive EBVs if you want high growth rates to weaning
400 Day Weight (kg)	Genetic potential for growth from birth to 400 days of age	High positive EBVs if you want high growth rates to finishing
Muscle Depth (mm)	Genetic potential for muscularity and potential to increase lean meat yield	High positive EBVs if you want good calf conformation
Fat Depth (mm)	Genetic potential for leaner carcasses	High negative EBVs if you want to produce leaner carcasses or take calves to heavier weights without penalty for fatness
Age at 1st Calving (%)	Genetic potential for early sexual maturity	High negative EBVs for a greater proportion of heifers that hold to 1 st service

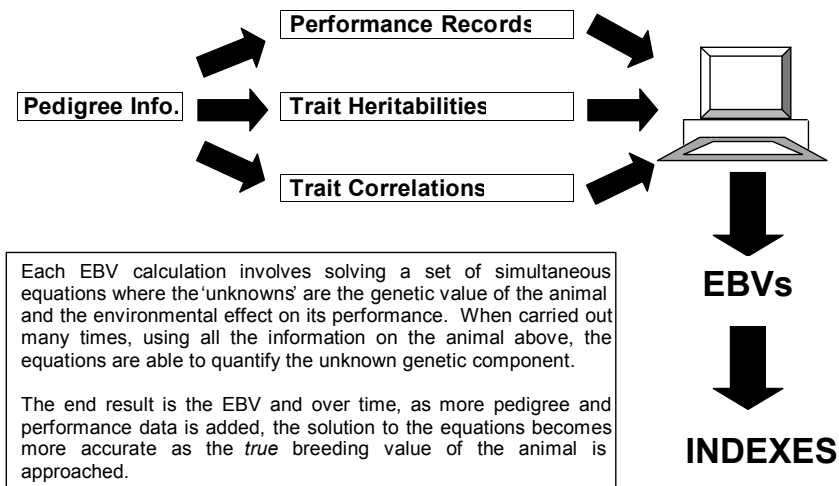
Longevity (years)	Genetic potential for long life in the breeding herd	High positive values for animals likely to remain in the herd for longer
Calving Interval (days)	Genetic potential for the time taken to get back in calf	High negative values to breed cows that get back in calf quickly
Docity (%)	Genetic potential for being calm when handled	High positive values for animals that are likely to be more calm when handled
Scrotal Circumference (cm)	Genetic potential for scrotal size. Linked to male serving capacity and puberty of daughters.	High positive values for animals with higher likely serving capacity and earlier maturing daughters.

2. HOW ARE EBVs CALCULATED?

EBVs are calculated using information from several sources:

- Measurements from the animal itself
- Measurements from the animals herd mates (known as 'contemporaries' *)
- Measurements from the animals relatives and their contemporaries
- The degree to which one trait influences another (known as 'correlation' *)
- The degree to which each trait is passed on to the next generation (known as 'heritability' *)

* Terms explained below



Heritability and Correlations

Heritability

This is a term used to describe the strength with which traits are inherited and it varies depending on the trait in question. Generally:

- Traits associated with reproduction and survival have low heritabilities
- Milk production and early body size have medium heritabilities

- Later growth and carcass traits (i.e. fat and muscle) have relatively high heritabilities

Where traits with relatively good heritability are concerned, when something is known of the performance of one or both parents, then a prediction can be made as to how the offspring will perform and BLUP uses this 'knowledge' to enhance the accuracy of its EBV calculations.

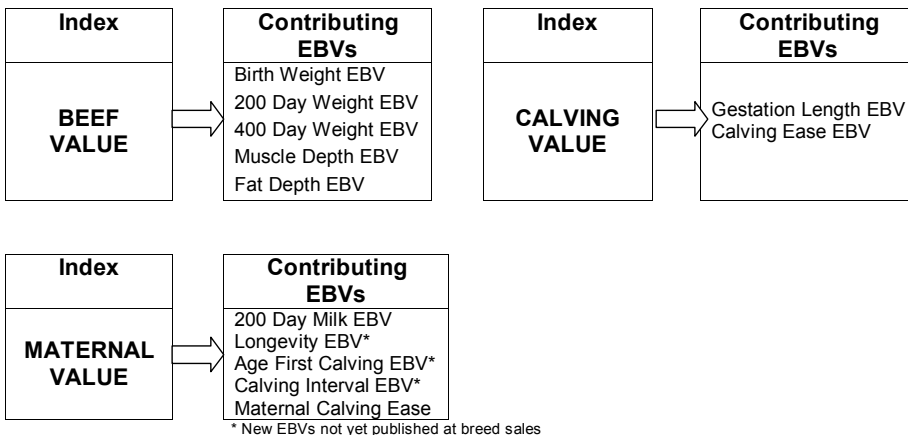
Correlations

This term describes the direction and strength of the association between two traits. For example, some traits are highly positively correlated, such as 200-Day Growth and 400-Day Growth, whilst others are highly negatively correlated, such as 400-Day Growth and Calving Ease. When something is known of one trait but perhaps not another, a prediction can be made based on what is known about the correlation between them. This again enhances the accuracy of the EBV in question and helps deal with situations where records for a trait are limited or unavailable.

3. BREEDING INDEXES

It is often desirable to select animals on the basis of more than one EBV. Indexes focus on specific breeding goals and combine the appropriate EBVs in to a single figure based on their relative economic value. This is widely regarded as the most efficient method of selecting on a number of traits at once.

Signet currently produces three beef Indexes, as follows:



When using an Index it is important that your breeding objective is broadly similar to that of the Index in question, otherwise you may unwittingly change aspects of your herd that you did not necessarily want to.

4. ACCURACY

An Accuracy Value is published next to every EBV and Index. Accuracy Values are expressed as a % and indicates the quantity and quality of records used to produce the EBV or Index.

Several things affect the accuracy of an EBV or Index, namely:

- The amount of information on the trait from the animal itself
- The amount of information on the trait from relatives of the animal

- The heritability of the trait concerned
- The amount of information from the animal and its relatives on traits correlated with the trait of interest and the strength of the correlations which vary between different traits.
- The number of herd mates from the same management group recorded (contemporaries).

Scaling for Low Accuracy

An important feature of BLUP EBVs is that they are scaled to account for the amount of performance information on which they are based. EBVs based on very little information get adjusted towards the average EBV and this adjustment applies to both high and low EBVs.

This prevents animals gaining very high or very low EBVs as a result of a few very good or very poor records and is designed to protect the user from risk. The more information available on an animal and its relatives, the less the EBVs are adjusted.

Accuracy Values indicate how similar an animal's EBVs are to its true breeding value. They predict the likelihood that an animal's EBVs will change over time

5. EBV INDEXES

To aid interpretation at breed sales, all Limousin EBVs are presented in index form based around an average of 100 with an approximate range of 70 to 130. For example:

	Calving Value	200 Day Milk (kg)	200 Day weight (kg)	400 Day weight (kg)	Muscle Depth (mm)	Fat Depth (mm)	Beef Value
EBV	LM -4C	-1	+25	+34	+3.40	-0.20	LM +23
Accuracy %	85	54	75	73	68	66	73
Index	77	98	112	106	111	111	108

Below average

Above average

6. MATERNAL EBVs

Many commercial and pedigree producers are breeding their own female replacements and need to identify bulls with superior maternal attributes.

200 Day Milk EBV

One of the most important maternal EBVs is the 200 Day Milk EBV- indicating the degree to which 200 day milk is influenced by maternal performance- e.g. milkiness and general mothering ability.

As well as predicting breeding potential for growth to 200 day of age, the 200 day weight can be used to assess an animal's breeding potential for milking ability.

Consider the performance of the grand-offspring of a bull. The weights of all of his grandprogeny are influenced by his growth genes, but only those produced by his daughters are affected by his genes for milk.

If the grandprogeny produced by his daughters are constantly heavier than those produced by his sons, then it is likely to be due to his superior genes for milk production.

Interpretation
 A bull with an EBV of +4 for 200-Day Milk is expected to produce heifer calves which will have above average maternal characteristics leading to their calves being 2kg heavier at 200-days than calves from heifers sired by a bull with an EBV of 0.

Maternal Calving Ease

This EBV predicts how easily a bulls daughters will calve. It should not be confused with the Calving Ease EBV which predicts how easily a bulls progeny will be born.

The Maternal Calving Ease EBV is calculated from calving records and is expressed as a % indicating the proportion of unassisted calvings.

Interpretation

A bull with a Maternal Calving Ease EBV of 2% will produce females that have 1% more unassisted calvings than a bull with an EBV of 0.

EBVs are also produced for: Longevity, Age at First Calving and Calving Interval but these are not yet published at breed sales.

7. How to Use EBVs and Indexes

EBVs are expressed in the same unit as the recorded trait (e.g. kg for 400-Day Weight, mm for Muscle Depth etc) and are relative to a Breed Benchmark, which is updated and published annually.

Limousin Breed Benchmark 2013

Trait	BOTTOM			AVERAGE	TOP		
	1%	10%	25%		25%	10%	1%
Gestation Length (days)	3.7	1.9	1.2	0.5	-0.2	-1.0	-2.6
Calving Ease (%)	-8.4	-4.7	-3.3	-2.3	-1.1	-0.3	1.0
Maternal Calving Ease	-1.0	-0.2	0.2	0.6	1.0	1.2	1.7
Birth Weight (kg)	3.4	2.4	1.9	1.3	0.9	0.4	-0.4
Calving Value	LM-4C	LM-2C	LM-1C	LM0C	LM1C	LM2C	LM4C
200-Day Milk (kg)	-6	-3	-2	-1	1	2	5
200-Day Weight (kg)	-4	6	12	17	25	32	45
400-Day Weight (kg)	-4	13	22	30	43	55	77
Muscle Depth (mm)	-0.7	0.6	1.2	2.1	3.1	4.1	6.0
Fat Depth (mm)	0.4	0.1	0.0	-0.1	-0.2	-0.3	-0.6
Beef Value	LM6	LM13	LM16	LM20	LM26	LM31	LM41
Maternal Value	LM-21V	LM-9V	LM-3V	LM4V	LM9V	LM16V	LM28V

When using EBVs it is important to remember that although they can be compared between herds, they can not be compared between breeds.

Using the Breed Benchmark, compare and contrast the EBVs and Indexes of the two young bulls below.

Bull A

Analysis Date	Calving Value	200 Day Milk (kg)	200 Growth (kg)	400 Growth (kg)	Muscle Depth (mm)	Fat Depth (mm)	Beef Value
24/10/2008	LM1C	4	28	42	4.1	-0.1	LM27
EBV							
Accuracy %	57	42	72	69	69	62	63
Index	100	120	122	117	128	103	120

100 day wt	200 day wt	300 day wt	400 day wt	500 day wt	Scanned
118	253	378	556	710	Yes



Bull B

Analysis Date	Calving Value	200 Day Milk (kg)	200 Growth (kg)	400 Growth (kg)	Muscle Depth (mm)	Fat Depth (mm)	Beef Value
24/10/2008	LM4C	-5	30	52	2.0	0.3	LM25
EBV							
Accuracy %	59	43	73	68	66	60	64
Index	120	86	124	125	107	76	116

100 day wt	200 day wt	300 day wt	400 day wt	500 day wt	Scanned
126	256	385	568	755	Yes



- Each bull has been fully weight recorded (i.e. they both have a complete set of 100-day adjusted weights), scanned (the box says 'Yes') and possesses satisfactory accuracy figures, given their age.
- Both bulls have EBVs for growth and carcass traits that are above the breed average, but in several ways their characteristics differ:
 - > Bull A has a higher Muscle Depth EBV
 - > Bull B has the highest EBVs for growth rate (weight) EBVs
 - > Bull A has a 200-Day Milk EBV in the Top10% of the breed
 - > Bull B has a Calving Value in the Top 10% of the breed

Bull A would be the most suitable out of the two for a unit where conformation takes high priority. The high 200-Day Milk Weight EBV would also make it suitable for herds where female replacements are retained for breeding.

The high Calving Value of Bull B indicates that it would be more suitable for mating to heifers. It could also be used in herds where a priority is to improve growth.

Remember

When trying to establish just how much influence a bull will pass on to his progeny it is important to remember to halve the value of the EBV, since the other half of a calf's genes comes from the cow.

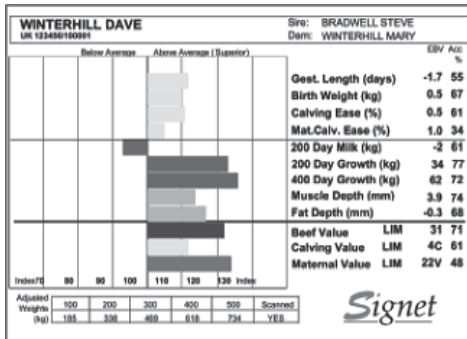
For example, a bull with a 400-Day Growth (weight) EBV of +62 is estimated to have the genetic potential to be 62kg heavier at 400 days of age compared to a bull with an EBV of 0.

Based on their sire's genetics, his calves would be expected to be 31kg heavier at that age when compared to calves by a bull with an EBV of 0, since they only inherit half of their growth genes from their sire (the other half coming from their dam).

8. UNDERSTANDING SALE CARDS AND CATALOGUES

Estimated Breeding Values on Sale Cards

EBVs and Indexes are produced on sale cards as shown below:



Bars that lie to the right of the central line indicate the EBV/Index is above breed average (and the further it is to the right, the higher above breed average it is). Similarly, bars to the left of the central line indicate the EBV/Index is below breed average (and the further to the left it is, the further below average it is).

In sale catalogues, the same figures are produced in table format similar to the examples of Bull A and Bull E above. The EBV Index (bottom line) will quickly indicate where values lie in relation to the breed average. The Breed Benchmark printed in the front pages of the catalogue will allow further refinement of this.

9. EBV and PEDIGREE INFORMATION JUST A CLICK AWAY

EBV and pedigree information on all Limousin cattle are just a few internet clicks away.

Step 1: Click the 'Basco Online Herd Book' button on the Limousin Society homepage (www.limousin.co.uk)

Step 2: In the 'All Breeds Quick Search' box type the name or ear number of the animal you are interested in or click on the 'Breeder Search' button to look at all animals belonging to or bred by a particular breeder.

The site will then tell you the animals owner/breeder details, its EBVs, its pedigree and list its progeny with full links to all of their information.

10. FURTHER INFORMATION

For further information, please contact Alison Glasgow, British Limousin Cattle Society on telephone 01721 730664, e-mail alison@limousin.co.uk or visit the BLCS web site www.limousin.co.uk



Cannon General Merchants

29 Liminary Road, Ballymena
Tel: 028 2564 2464 Fax: 028 2565 0350

Suppliers of:

Veterinary drenches, Pour-ons & Injections

Range of Show & Grooming Supplies

Ufas approved Cattle and Sheep Feeds

Horse, Pigeon & Dog Food

Wide Range of Agriculture Supplies

Outdoor Clothing, Wellingtons & Boots

Building Supplies and General Hardware

Stocking:

Large range of wooden field gates
D-rail & vertical board fencing
Sheep wire, barbwire & posts
Galv. gates , Large Selection
Conc./wooden gateposts

Vendors' Index & Herd Health Summary Ballymena 6 May 2012

The Vendors' Index includes a condensed version of the Herd Health information submitted at point of entry by the vendor. For further information, please see Explanatory Notes & copy of Herd Health Declaration form also included in the catalogue.

Aiken, J & J	CARNEW 82 Corbally Road, Carnew, Dromara, Dromore, BT25 2EX (02897 532578)	LOT 75, 88
Herd Information:	Currently on a 1 year TB testing interval Member of a CHeCS controlled health scheme for Johnes, BVD & Lepto since 2011 Routinely vaccinating against BVD and Lepto since 2006.	
Allison, L & R	SCOTCHTOWN 288 Seacoast Road, Limavady, Co Derry BT49 OJY (02877 750329)	LOT 38
Herd Information:	Currently on a 1 year TB testing interval Member of a CHeCS controlled health scheme for Johnes since 2010 Routinely vaccinating against BVD since 2005 and Lepto since 1997.	
Armstrong, M	SESKINGROVE 76 Seskin Road, Straid, Ballyclare, BT39 9NG (07814528468)	LOT 111, 119
Herd Information:	Currently on a 1 year TB testing interval Routinely vaccinating against Lepto since 2000.	
Berry Brothers	BANVILLE 412 Tullyraine Road, Banbridge, Co Down, BT32 4PR	LOT 36, 37, 45
Herd Information:	Currently on a 1 year TB testing interval Member of a CHeCS controlled health scheme for Johnes & BVD since 2010 Accredited free for BVD since 2010 Routinely vaccinating against IBR and Lepto.	
Bradley, L	DRUMARD Rock House, 23 Drumard Road, Knockloughrim, Magherafelt, BT45 8QA (02879 642342)	LOT 118, 125
Herd Information:	Currently on a 1 year TB testing interval Routinely vaccinating against BVD since 2010	
Broadhooks Cattle Co	BROADHOOKS 39A Waveney Road, Ballymena, BT43 5BA	LOT 01, 02, 61
Herd Information:	Currently on a 1 year TB testing interval Member of a CHeCS controlled health scheme for Johnes, BVD, IBR & Lepto since 2001.	

Brown, P	RATHCONVILLE 27 Rathconville Road, Loughgilly, Co Armagh, BT60 2DJ (02838 318430)	LOT 43
Herd Information:	Currently on a 1 year TB testing interval Member of a CHECS controlled health scheme for Johnes & BVD Routinely vaccinating against BVD since 2010, IBR since 2008 & Lepto since 2010.	
Campbell, W	SPAGE 48 Ballyvaddy Road, Carnlough, Ballymena, BT44 0LG (02828 841467)	LOT 23, 25, 28, 97
Herd Information:	Currently on a 1 year TB testing interval Member of a CHECS controlled health scheme for Johnes.	
Chestnut, V	CLOUGHER Clougher Farm, 9 Clougher Road, Bushmills, Co Antrim, BT57 8XP (02820 731536)	LOT 8
Herd Information:	Currently on a 1 year TB testing interval.	
Clyde, RS	CLYDEVALLEY 37 Kilmakee Road, Templepatrick, Co Antrim, BT39 0EP (02894 433075)	LOT 4, 12, 17
Herd Information:	Currently on a 1 year TB testing interval Member of a CHECS controlled health scheme for Johnes & BVD since 2012.	
Conway, M	CRAIGATOKE 26 Meenagorp Road, Plumbridge, Omagh BT79 8DP (02881 648401)	LOT 69, 72, 74, 78
Herd Information:	Currently on a 1 year TB testing interval Member of a CHECS controlled health scheme for Johnes & BVD Accredited free for BVD since 2012 Routinely vaccinating against BVD & Lepto.	
Crawford,R	ERNE Rathkeeland, Maguiresbridge, Co Fermanagh, BT94 4RT (02889 531276)	LOT 32, 92, 105, 126, 127
Herd Information:	No Herd Health Declaration.	
Davidson, I	BALLYRICKARD 3 Stewartstown Drive, ILarne, Co Antrim, BT40 2PL (02828 270724)	LOT 39
Herd Information:	Currently on a 1 year TB testing interval Member of a CHECS controlled health scheme for Johnes & BVD Accredited free for Johnes since 2009 Routinely vaccinating against BVD & Lepto.	

Doyle, MF	TULLYBRICK 188 Sixtowns Road, Draperstown, Co Derry, BT45 7BH (02879 627352)	LOT 44
Herd Information:	Currently on a 1 year TB testing interval Member of a CHeCS controlled health scheme for Johnes, BVD & Lepto since 2011 Routinely vaccinating against BVD, IBR & Lepto since 2011.	
Ferguson & Sons, J	OLDEHOUSE The Oldehouse, 77 Ballyrainey Road, Comber, BT23 5JU (02891 874504)	LOT 84
Herd Information:	Currently on a 1 year TB testing interval Member of a CHeCS controlled health scheme for Johnes, BVD & Lepto Routinely vaccinating against BVD and Lepto.	
Finney, A	CHINAULEY Chinauley House, 190 Castlewellan Road, Banabridge, Co Down, BT32 3SE (02840 662621)	LOT 64
Herd Information:	Currently on a 1 year TB testing interval Member of a CHeCS controlled health scheme for Johnes, BVD, IBR & Lepto since 2010 Accredited free for BVD, IBR & Lepto since 2011 Routinely vaccinating against BVD, IBR & Lepto.	
Frew, D	FREWSTOWN 29 Kellswater Road, Antrim, Co Antrim, BT41 2PF (02825 898110)	LOT 15, 35
Herd Information:	Currently on a 1 year TB testing interval Member of a CHeCS controlled health scheme for Johnes Routinely vaccinating against BVD and Lepto since 2000.	
Gilliland, J	BALLYROBIN The Grove, 110 Ballyrobin Road, Antrim Co Antrim, BT41 4TF (02894 463319)	LOT 14, 27
Herd Information:	Currently on a 1 year TB testing interval Member of a CHeCS controlled health scheme for Johnes, BVD & Lepto Accredited free for BVD Routinely vaccinating against BVD since 2012.	
Hall, B	BALLYHONE 25 Old Carrick Road, Newtownabbey, Co Antrim, BT37 0UE (02890 832512)	LOT 89
Herd Information:	Currently on a 1 year TB testing interval Member of a CHeCS controlled health scheme for Johnes since 2011 & BVD since 2013 Routinely vaccinating against BVD, IBR & Lepto.	

Hamill, HP Herd Information:	BALLYKELLY 2 Hillhead Road, Antrim, BT28 2HE (07796 614603) Currently on a 1 year TB testing interval Member of a CHeCS controlled health scheme for Johnes & BVD since Jan 2011 Accredited free for BVD since Dec 2011 Routinely vaccinating against IBR since 2005 & Lepto since 1995.	LOT 95, 96, 100, 102
Hume, D Herd Information:	CULNAGECHAN 44 Maghereagh Road, Randalstown, Co Antrim, BT41 2EQ (02894 479690) Currently on a 1 year TB testing interval Member of a CHeCS controlled health scheme for Johnes since 2009 Routinely vaccinating against BVD since 2012.	LOT 7, 20, 26, 34, 60, 63, 66
Jordan, P Herd Information:	DRUMBEE 80 Tullysarran Road, Armagh, BT61 8HE (02837 547928) Currently on a 1 year TB testing interval Member of a CHeCS controlled health scheme for Johnes since 2012 Routinely vaccinating against BVD since 2006.	LOT 106
Keys, V Herd Information:	TOGHERDOO 8 Aughnamoe Road, Galbally, Dromore, Co Tyrone, BT78 3HR (02882 898132) Currently on a 1 year TB testing interval Member of a CHeCS controlled health scheme for Johnes & BVD Routinely vaccinating against BVD & Lepto.	LOT 52, 53, 122
Loughran, M Herd Information:	MILLGATE 1 Mill Road, Dungate, Dunamore, Cookstown, Co Tyrone, BT80 9NU (02886 751780) Currently on a 1 year TB testing interval Member of a CHeCS controlled health scheme for Johnes & BVD Accredited free for BVD since 2012 & Johnes since 2011 Routinely vaccinating against BVD & Lepto since 2008.	LOT 54, 55, 81, 116, 123, 124
Lynch, W & J Herd Information:	LISBRACKEN 7 Gorticaw Road, Drumhoe, Co Londonderry, BT47 3LU (02871 301615) Currently on a 1 year TB testing interval Member of a CHeCS controlled health scheme for Johnes since 2010 & BVD Accredited free for BVD since 2013 Routinely vaccinating against BVD.	LOT 18, 19, 57

McAllister, W	ARTNAGULLION 92 Parkgate Road, Kells, Ballymena, Co Antrim, BT42 3PG (02825 898084)	LOT 22, 90, 112
Herd Information:	Currently on a 1 year TB testing interval Member of a CHeCS controlled health scheme for Johnes & BVD Routinely vaccinating against BVD & Lepto since 2001.	
McAuley, B	LARKHILL Larkhill Farm, Seven Mile Straight, Antrim, Co Antrim, BT41 4QH (02894 462410)	LOT 103, 128
Herd Information:	Currently on a 1 year TB testing interval Member of a CHeCS controlled health scheme for Johnes since 2005; and BVD & IBR Accredited free for BVD since 2010 & IBR since 2009 Routinely vaccinating against BVD & Lepto.	
McAvoy, J	AVEGLEN Avaglen, 28 Knocknamuckley Lane, Portadown, Co Armagh, BT63 5PF (02838 336074)	Lot 50
Herd Information:	Currently on a 1 year TB testing interval.	
McCague, GM	BRIDGEVIEW 19 Sheepbridge Rd, Newry, Co Down, BT34 1SS (028 3026 3958)	LOT 41, 71
Herd Information:	Currently on a 1 year TB testing interval Routinely vaccinating against BVD & Lepto.	
McClintock, J	REIDSTOWN 139 Church Road, Glenwherry, Ballymena, Co Antrim, BT42 3EJ (02825 831325)	LOT 58, 85, 86
Herd Information:	Currently on a 1 year TB testing interval Routinely vaccinating against BVD & Lepto.	
McConalogue, F	CLORNEY 16 Brockagh Road, Eglinton, Co Derry, BT47 3AT (02871 812295)	LOT 3
Herd Information:	No Herd Health Declaration.	
McCracken, H	SEAVIEW 11 Ganaway Road, Ballywalter, Newtownards, Co Down, BT22 2LG (02842 758246)	LOT 31, 33
Herd Information:	Currently on a 1 year TB testing interval Member of a CHeCS controlled health scheme for Johnes; and BVD since 2011 Routinely vaccinating against BVD since 2010.	
McDonald, PJ	TULLYGLUSH 28 Mullan Road, Tynan, Co Armagh, BT60 4TB (02837 568135)	LOT 46
Herd Information:	Currently on a 1 year TB testing interval Member of a CHeCS controlled health scheme for Johnes Routinely vaccinating against BVD & Lepto.	

McEldowney, L	CARNTOGHER 39 Slaughtneil Road, Maghera, Co Derry, BT46 5NJ (02879 401644)	LOT 6, 16
Herd Information:	Currently on a 1 year TB testing interval Member of a CHeCS controlled health scheme for Johnes & BVD.	
McFarland, H & D	RAHONEY 200 Tonnagh Road, Trillick, Co Tyrone, BT78 3PG (02882 898220)	LOT 29, 62, 120, 121
Herd Information:	Currently on a 1 year TB testing interval Member of a CHeCS controlled health scheme for Johnes, BVD & Lepto Accredited free for BVD Routinely vaccinating against BVD & Lepto since 1997.	
McGarrigle, JN	MONEYKEE Moneykee, Irvinestown, Co Fermanagh, BT94 1FZ (02868 621201)	LOT 98, 104
Herd Information:	Currently on a 1 year TB testing interval Member of a CHeCS controlled health scheme for Johnes & BVD since 2011 Accredited free for BVD since 2012 Routinely vaccinating against BVD & Lepto since 2006.	
McGeehan, JI & SJ	SLIEVE 78 Mullaghead Road, Fivemiletown, Co Tyrone, BT75 0JJ (02889 521792)	LOT 73
Herd Information:	Currently on a 1 year TB testing interval Member of a CHeCS controlled health scheme for Johnes, BVD, IBR & Lepto Accredited free for BVD since 2012 Johnes Risk Level 2 Routinely vaccinating against BVD & Lepto since 2011.	
McKinney Brothers	HEATHMOUNT Heathmount, 85-91 Craigadick Road, Maghera, Co Derry, BT46 5DH (02879 642338)	LOT 10, 11, 93, 94
Herd Information:	Currently on a 1 year TB testing interval Member of a CHeCS controlled health scheme for Johnes Routinely vaccinating against BVD & Lepto since 2006.	
McPolin, M & A	NEWHILLFARM 146 Castlwellan Road, Cabra, Newry, BT34 5HF (02840 630149)	LOT 264, 267, 280
Herd Information:	Currently on a 1 year TB testing interval Member of a CHeCS controlled health scheme for Johnes, BVD, IBR & Lepto Accredited free for Johnes and BVD since 2007 Routinely vaccinating against IBR since 2010.	

Magill,C Herd Information:	SLANE BURN 10 Loughdoo Road, Larne, Co Antrim, BT40 2LZ (02828 583135) Currently on a 1 year TB testing interval.	LOT 51
Mathews Brothers Herd Information:	BRIARFIELDS Briarfield, 65 Dickeystown Road, Glenarm, Ballymena, BT44 0BA (02828 841296) Currently on a 1 year TB testing interval Member of a CHeCS controlled health scheme for Johnes, BVD, IBR & Lepto since 2008.	LOT 79
Murray, C Herd Information:	ANNADALE 65 Skerriff Road, Cullyhanna, Newry, Co Down, BT35 0JN (02830 861516) Currently on a 1 year TB testing interval Member of a CHeCS controlled health scheme for Johnes & BVD Routinely vaccinating against BVD.	LOT 21, 24, 99, 107, 113, 114, 115
Murray, D Herd Information:	TITCHBURN 12 Ballinarea Road, Cullyhanna, Newry, Co Down, BT35 0LB (02830 861516) Currently on a 1 year TB testing interval Member of a CHeCS controlled health scheme for Johnes, BVD, IBR & Lepto Routinely vaccinating against BVD & Lepto.	LOT 30
O'Kane, B & Sons Herd Information:	KEADYVIEW 17 Liscall Road, Garvagh, Coleraine, Co Derry, BT51 5EP (02829 558589) Currently on a 1 year TB testing interval Member of a CHeCS controlled health scheme for Johnes & BVD.	LOT 110
Owens, F & P Herd Information:	DRUMDUFF 43 Brackey Road, Sixmilecross, Omagh, Co Tyrone, BT79 9PH (02880 758128) Currently on a 1 year TB testing interval Member of a CHeCS controlled health scheme for Johnes & BVD since 2011 Routinely vaccinating against BVD & Lepto since 2009.	LOT 59, 65
Paynter, JR Herd Information:	DRUMILLY 3 Drumilly Road, Hockley, Co Armagh, BT61 8RF (02838 870357) Currently on a 1 year TB testing interval Member of a CHeCS controlled health scheme for Johnes & BVD since 2011 Routinely vaccinating against BVD.	LOT 82

Quail, JA Herd Information:	LYNDERG Northwood, Tullyear, Banbridge, Co Down, BT32 OZZ (02840 623452) Currently on a 1 year TB testing interval Member of a CHeCS controlled health scheme for Johnes, BVD, IBR & Lepto Routinely vaccinating against BVD & IBR.	LOT 5, 13, 76, 77
Rainey, JD Herd Information:	CLARAGH 5 Agivey Road, Kilrea, Co Derry, BT51 5UT (02829 541032) Currently on a 1 year TB testing interval Member of a CHeCS controlled health scheme for Johnes & BVD Accredited free for Johnes & BVD Routinely vaccinating against BVD & Lepto since 2009.	LOT 40
Savage, H Herd Information:	TRUEMAN 70 Skerriff Road, Altnamackin, Newry, Co Down, BT35 OJW (02830 868203) Currently on a 1 year TB testing interval Member of a CHeCS controlled health scheme for Johnes, BVD & Lepto Routinely vaccinating against BVD, IBR & Lepto.	LOT 67, 87, 91
Savage, RAG Herd Information:	AGHADOLGAN 50 Blakes Rd, Articlave, Castlerock, BT51 4UE (028 70849504) Currently on a 1 year TB testing interval Member of a CHeCS controlled health scheme for Johnes & BVD since 2010 Accredited free for BVD Routinely vaccinating against BVD & Lepto since 2006.	LOT 47, 48, 49, 68, 80, 109, 117
Shaw, J Herd Information:	STRATHBANN 44 Derrycarne Road, Portadown, Co Armagh BT62 1PT (02838 331119) Currently on a 1 year TB testing interval.	LOT 70
Veitch, K Herd Information:	ALBIAN Drumlone, Lisbellaw, Co Fermanagh, BT94 5PN (02866 387430) Currently on a 1 year TB testing interval Member of a CHeCS controlled health scheme for Johnes since 2011, BVD since 2005, Lepto since 2000; and IBR Routinely vaccinating against BVD & Lepto.	LOT 101
Wilson, J&E T/A Lisnisk Farms Herd Information:	LISNISK 38 School Rd, Ballyroney, Banbridge, BT32 5JF (028 40638603) Currently on a 1 year TB testing interval Routinely vaccinating against BVD & Lepto since 2007.	LOT 9

Watson, MRG HILLHEAD LOT 56, 83
37 Hillhead Road, Ballyrussell, Dundonald, Belfast, BT16 0XD
(02890 483907)

Herd Information: Currently on a 1 year TB testing interval
Member of a CHeCS controlled health scheme for Johnes since
2010, IBR since 2011; and BVD
Accredited free for BVD since 2011.

Disclaimer: *The health information above is as supplied by, or on behalf of the breeder at time of entry. The responsibility for the accuracy of the information rests solely with the breeder and not with the British Limousin Cattle Society Ltd.*

semenstore.co.uk

quality semen on-line

Semenstore is a practical one-stop semen shop for vendors and buyers.

The Semenstore features:

On-line semen purchasing

Automated service

Payment collection

Professional marketing

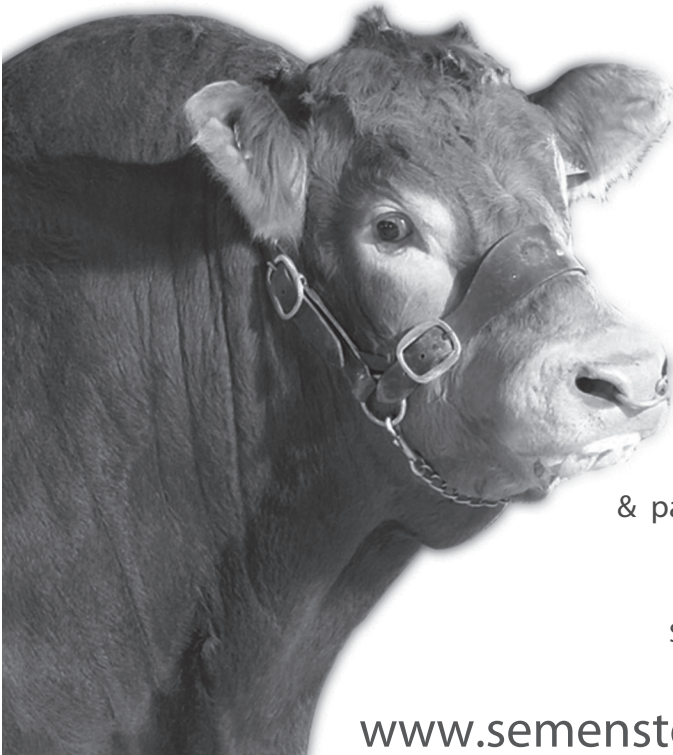
Semen for all markets

Export and domestic

Competitive pricing and costs

Unique offers & packages

One-stop Semen shop



www.semenstore.co.uk



BRITISH LIMOUSIN CATTLE SOCIETY OFFICIAL SALE HERD HEALTH DECLARATION

HOLDING LETTERS: _____ HERD PREFIX _____

NAME: _____

ADDRESS: _____

SALE DATE: _____

TB	
DATE HERD LAST TESTED CLEAR:	TESTING INTERVAL <input type="checkbox"/> 1 Year <input type="checkbox"/> 3 Years <input type="checkbox"/> 2 Years <input type="checkbox"/> 4 Years

HEALTH SCHEME. ARE YOU A MEMBER OF A CHECS CONTROLLED HEALTH SCHEME Yes No
 IF YES, TICK WHICH ONE SAC Premium Cattle Health Scheme HI Health NML Herdwise
 Biobest Herdcare NWL Advance Cattle Health Scheme AFBI Cattle Health Scheme
 IF YES, TICK WHICH DISEASES APPLY JOHNES BVD IBR LEPTO

ALL VENDORS, WHETHER IN CHECS SCHEMES OR PRIVATELY TESTING, SHOULD COMPLETE THE FOLLOWING:

	Accredited free (CHECS members only)	Herd Testing	Vaccinating
BVD	<input type="checkbox"/> Yes <input type="checkbox"/> No If yes, since:	<input type="checkbox"/> Yes <input type="checkbox"/> No If yes, since:	<input type="checkbox"/> Yes If yes name of <input type="checkbox"/> No Vaccine: If yes, since:
IBR	<input type="checkbox"/> Yes <input type="checkbox"/> No If yes, since:	<input type="checkbox"/> Yes <input type="checkbox"/> No If yes, since:	<input type="checkbox"/> Yes If yes name of <input type="checkbox"/> No Vaccine: If yes, since:
LEPTO	<input type="checkbox"/> Yes <input type="checkbox"/> No If yes, since:	<input type="checkbox"/> Yes <input type="checkbox"/> No If yes, since:	<input type="checkbox"/> Yes If yes name of <input type="checkbox"/> No Vaccine: If yes, since:
JOHNES	<input type="checkbox"/> Yes <input type="checkbox"/> No If yes, since:	<input type="checkbox"/> Yes <input type="checkbox"/> No If yes, since:	<input type="checkbox"/> Yes If yes name of <input type="checkbox"/> No Vaccine: If yes, since:

BTV Vaccination Information

Declaration:
 I certify that the above information is correct as at date of entry
 Signed: _____ Name: _____ Date: _____

The British Limousin Cattle Society, National Agricultural Centre, Stoneleigh, CV8 2RA. Tel 02476-696500

Disclaimer: The health information above is as supplied by, or on behalf of the breeder.
 The responsibility for the accuracy of the information rests solely with the breeder and not with the British Limousin Cattle Society Ltd.
 The British Limousin Cattle Society reserves the right to contact the CHECS scheme of which you are a member to check the accuracy of information provided.

HERD HEALTH AT BRITISH LIMOUSIN CATTLE SOCIETY (BLCS) COLLECTIVE SALES

Explanatory Notes

Introduction

Following the cash-back Herd Health Initiative introduced by the Society in 2005, a second major health step saw the introduction of Herd Health Declarations at BLCS Collective Sales from 2007.

New herd health rules were introduced by the BLCS at nominated premier Collective Society Sales from May 2011 and these are now in place at all premier BLCS Collective Sales (Stirling February & October; Carlisle February, May, October & December; Brecon May & November).

The principal aim is to standardise herd health declarations and information presented in order to provide both members and customers alike with clear, accurate herd health information at the point of sale and within the given sale catalogue. As such it is attractive and informative for customers and aims to further raise the level of buyer confidence.

BLCS Herd Health Rules have two principal elements:

Part 1. From 1st May 2011, herds selling at the premier Collective Society Sales have to be members of, and adhering to, the terms of a CHeCS approved Herd Health Scheme. At a minimum, this must include a whole herd test for Johne's disease.

Part 2. From 1st May 2011, all animals male and female, including calves at foot, presented at the premier Collective Society Sales be EITHER from a BVD Accredited Herd within a CHeCS approved Herd Health Scheme OR to have been BVD tested virus free. All animals forward will be required to be BVD vaccinated prior to sale with an approved vaccine. Pregnant animals must have had testing and vaccination completed prior to service. Vaccination of calves at foot to be in accordance with CHeCS guidelines and recommendations.

Herd Health Declaration

The sale entry form is accompanied by a Herd Health Declaration form asking vendors questions regarding for example: TB status; membership of CHeCS (www.checs.co.uk) health schemes (Advance Cattle Health Scheme, AFBI Cattle Health Scheme, Herdsure Cattle Health Improvement Service, HiHealth Herdcare, NML Herdwise, Premium Cattle Health Scheme, Shetland Animal Health Scheme) and Johne's, BVD, IBR and Lepto status. This form is shown here.

A condensed version of the Herd Health Declaration information appears in the Vendors' Index at the front of the respective sale catalogue.

Is the Herd Health Declaration compulsory?

For premier collective sales (Carlisle February, May, October & December; Stirling February & October; Brecon May & November) the Herd Health Declaration is compulsory. For reasons of clarity and to provide purchasers with the most accurate information available, vendors are required to complete this at time of entry.

Although not compulsory at other collective sales (Ballymena, Dungannon, Thainstone & Stirling in May), the Society recommends that vendors complete the Herd Health Declaration. This information then appears in the Vendors' Index within the catalogue. Where a member has chosen not to complete the Herd Health Declaration, it will simply say 'No Herd Health Declaration'.

What Other Health Information may be displayed?

Vendors are encouraged to apply to their respective CHeCS health scheme for individual animal health cards for display on pens. For an individual animal's test results, or vaccination histories, regarding BVD, IBR, Lepto or Johne's, these are permitted above the sale pens only upon presentation of a signed veterinary declaration to verify that the animal concerned has had a clear test.

Again, for reasons of practicality, no health information notes are to be put in the catalogue footnotes by vendors. Similarly, the Society has requested that no declarations on health information be given by the auctioneer during the sale. Again, the sole purpose of this is to avoid confusion and to try and ensure that the information provided is done accurately, fairly and in a standardised format in the catalogue. This point has been agreed with the auctioneers.

Introduction of Johne's Risk Levels from 1st January 2013

From 1st January 2013, CHeCS, the self-regulatory body for cattle health schemes in the UK and Ireland, has agreed a change to Johne's testing with herds classified on a Risk Level basis of 1 to 5 (with 1 being low risk and 5 high risk). **Please note that the new Risk Levels only apply to herds that have completed a whole herd test for Johne's under the new classification (which could be any time until 31st December 2013).** In due course, a new version of the Herd Health Declaration will include a section where breeders will be able to indicate their Johne's Risk Level, once known.

The Risk Levels are as follows:

Risk Level 1	herds that were previously Accredited
Risk Level 2	herds that have had 1 or more clear qualifying tests
Risk Level 3	herds that have 3% or fewer reactors every year*
Risk Level 4	herds that have more than 3% reactors every year**
Risk Level 5	herds not in a CHeCS Johne's disease programme and herds with no health plan in place

* Note, for herds with fewer than 33 animals in the target age range, rather than 3%, Risk Level 3 will be one animal testing positive for Johne's

** Note, for herds with fewer than 33 animals in the target age range, rather than 3%, Risk Level 4 will be more than one animal testing positive for Johne's

Should you have any queries regarding the new Johne's Risk Level classification, please contact your respective CHeCS health scheme.

What if a vendor is selling an animal/s that he did not breed?

Vendors are still requested to fill in the Herd Health Sale Declaration accordingly. Prospective customers are advised to speak to vendors directly to acquire accurate health information on animals offered but not bred by the seller.

Feedback & more information

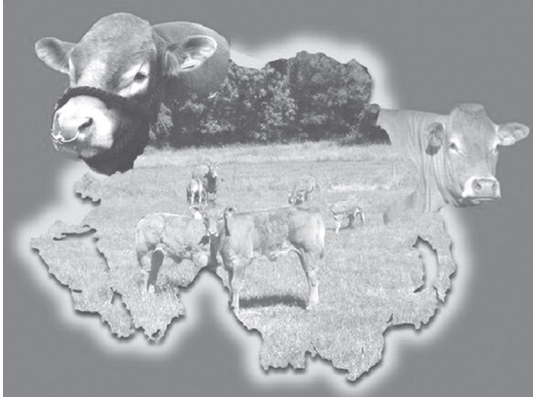
The Society welcomes members' and customers' feedback on the Herd Health Declarations and health policy at sales. If you have further questions, please speak to the Society representatives, Iain Kerr & Richard Saunders, or the Auctioneers.

Sale Day Minimum Qualifying Weights

Ballymena Sale Monday 6th May 2013

Date of Birth	Days Old	Min. Weight (kg)
7/3/12	425	535
2/3/12	430	541
26/2/12	435	546
21/2/12	440	552
16/2/12	445	557
11/2/12	450	563
6/2/12	455	568
1/2/12	460	574
27/1/12	465	579
22/1/12	470	585
17/1/12	475	590
12/1/12	480	596
7/1/12	485	601
2/1/12	490	607
28/12/11	495	612
23/12/11	500	618
18/12/11	505	623
13/12/11	510	628
8/12/11	515	633
3/12/11	520	639
28/11/11	525	644
23/11/11	530	649
18/11/11	535	654
13/11/11	540	660
8/11/11	545	665
3/11/11	550	670
29/10/11	555	675
24/10/11	560	681
19/10/11	565	686
14/10/11	570	691
9/10/11	575	696

Date of Birth	Days Old	Min. Weight (kg)
4/10/11	580	702
29/9/11	585	707
24/9/11	590	712
19/9/11	595	717
14/9/11	600	723
9/9/11	605	728
4/9/11	610	733
30/8/11	615	738
25/8/11	620	743
20/8/11	625	748
15/8/11	630	753
10/8/11	635	758
5/8/11	640	763
31/7/11	645	768
26/7/11	650	773
21/7/11	655	778
16/7/11	660	783
11/7/11	665	788
6/7/11	670	793
1/7/11	675	798
26/6/11	680	803
21/6/11	685	808
16/6/11	690	813
11/6/11	695	818
6/6/11	700	823
1/6/11	705	827
27/5/11	710	831
22/5/11	715	835
17/5/11	720	839
12/5/11	725	843
7/5/11	730	847



LIMOUSINS IN BALLYMENA
PURCHASER'S DETAILS

Name

Address

.....

.....

Lot No.

CONDITIONS OF SHOW OR SALE

1. Each item must be bona fide the property of the exhibitor.
2. The highest bidder to be the buyer, and if any dispute arises between the bidders, the decision of the Auctioneer shall be Final, or at his discretion the lot in dispute shall immediately be put up again and re-sold. The Auctioneer reserves the right of refusing the bid of any person and regulates the bidding, and no bidding is to be retracted.
3. The purchasers to give their names and places of abode in writing and pay the full purchase money for each lot at the fall of the hammer (if required); in default of which the lot or lots so purchased may immediately be put up again and re-sold.
4. No lot or lots shall be removed from the premises before the sale, or till paid for, but each and every lot shall, immediately at the fall of the hammer, be considered as delivered, and be and remain in every respect at the absolute risk of the respective purchasers thereof, and shall be removed from the place of sale at the purchaser's expense.
5. If any purchaser shall fail to comply with the above conditions, or any part of them, the Auctioneers shall be at liberty either to recover in full the amount of the lot or lots bought by such purchaser, without reference to any delivery or acceptance of the lots or lots other than first delivery by the fall of the hammer, or to re-sell any lot or lots bought by the purchasers, either by public or private sale; and the full amount of the purchase money at the present sale, or the deficiency (if any) arising from such second sale, shall be made good by the defaulter at the present sale, and be recoverable as and for liquidated damages.
6. No money will be paid to the proprietor for any lot sold, unless the account be cleared by the purchaser and the Auctioneers will not be answerable for any deficiency that may arise on the re-sale of any uncleared property.
7. Animals are present on the sole responsibility of owners, whose duty it is to keep each exhibit under proper control at all times, whether in pen or in show or sale rings, or in transit within the centre. Neither the Auctioneers, the organisers nor the Sponsors, nor any of their officials or employees will be liable for damage or injury caused by any animal's behaviour, including overnight.
8. Purchasers are to understand that, although every reasonable precaution will be taken to ensure the safety and welfare of the animals exhibited, the Auctioneers will not be responsible for loss, or accidents of any kind, that may occur. Nor will the Auctioneers or vendors be accountable for any accident that may occur to any person attending the sale, whether as a visitor. or in any other capacity.
9. The pedigree, history and description of each animal is guaranteed by the owner, and no liability whatsoever is undertaken by the Auctioneers for the statements in the catalogue or announcements made at time of sale. The vendor who supplies such statements is alone responsible.
10. No undertaking of the Auctioneers or vendors or their servants to take charge of the lots or animals for sale, or to forward them to their destination. shall be held to impose any legal obligation or vitiate any of the foregoing conditions.
11. Any Medical Treatment to any animals must be advised by the Auctioneer for announcement at time of sale. The presence of any chemical or pharmaceutical substance in or on an animal or in its milk during the withdrawal period may render its sale void.
12. Should any question arise not provided for in the forgoing conditions, the decision of the Auctioneers shall be final, from which there shall be no appeal.
13. Neither the Auctioneers nor the sponsors incur liability for the return of Auction Fees where a claim IS made for return of purchase price of any lot sold at the sale.
14. The sale will be conducted in Guineas. Purchasers will pay VAT on Fees.
15. After Sale release of livestock or goods is by Pass Out issued by the Sale Office. This also includes unsold lots.
16. Each and every lot must be presented for sale in the auction ring in catalogue or numerical order. No Sale may be contemplated before such presentation. Lots not sold in the auction or present for demonstration purposes and subsequently sold privately on the premises must be recorded through the auctioneer's office and are subject to commission.
17. No electrical device may be connected to any socket in the show or sale premises unless it is fitted with an approved circuit breaking control. All equipment must be in up to date state of safety. Note. Sockets on sale rostrum are not suitable for blow driers.
18. Neither the Auctioneers, the Organisers, nor the Sponsors shall incur any liability for loss or inconvenience arising from postponement or cancellation of the event.

NOTE.

No animal is considered to be delivered to the Show and Sale until placed in the pen or place of tying allotted. Access doors will permit vehicles and trailers to enter the building for loading or unloading. Delivery to purchaser will also be effected when the purchaser removes the animal from the pen, or otherwise takes charges of the animal. Under no circumstances may any animal be taken out of the building for loading. The trailer or lorry must be backed inside the doorway and the screen doors closed to the vehicle. Please remember to collect your Movement Permit before leaving. And please remember that a new purchase should be introduced to company when taken home - and not placed in solitary confinement on arrival in strange surroundings after transport!

N.B.- The Auctioneers reserve the right to refuse cheques as payment. All payments to be in sterling by Bank Draft or cash, or at current exchange rate. New customers should contact the Auctioneers in advance of sale to make arrangements for use of cheques.

(2005)

SALE BULLS ONLY

01 Broadhooks Cattle Company
BROADHOOKS FANFARON HDJ10-003. Born **03/05/10.** UK **9102554/73-7.** Got by AI.

gs JORDY 22-94-004-711 ggs EUROPEEN 22-89-014-048
gsd FLAMANDE 22-90-037-989

Sire - SUISSE B 86-01-141-195

gd NATIVE B 86-97-111-921 ggs DUVALIER 36-88-009-657
gsd HATIVE 61-92-032-201

gs RONICK SHAPELY DY01-208 ggs RONICK NUCLEUS DY97-124
gsd RONICK HAINSI DY92-003

Dam - RONICK CHARITY DY07-1464

gd RONICK VALANCE DY04-893 ggs RONICK RASCARD DY00-122
gsd RONICK STYLE DY01-286

Broadhooks Fanfaron is the first son of Suisse B to be sold at auction in the UK or Ireland. His sire stack is something to behold; Jordy, Duvalier, Talent, Gigolo and Cannon; and Dam line includes Ainsi, Janita, Danita all show females from the Ronick Herd. He will produce shapely, milky easy calving replacement females.

CLASS ONE SENIOR BULLS BORN 21/03/11 – 05/06/11

02 Broadhooks Cattle Company
BROADHOOKS GEANT HDJ11-002. Born **21/03/11.** UK **9102554/0081-1.**

gs MAS DU CLO 23-96-032-213 ggs BAMBINO 19-86-005-742
gsd COSETTE 23-87-051-003

Sire - NEWTOWN BONSER IE231230670382

gd CASTLEVIEW RUB IE191567170232 ggs IDEAL 23-93-045-394
gsd CASTLEVIEW MISS CDTF-0044W

gs LEY 18-95-093-031 ggs ETONNANT 19-89-001-621
gsd CLEMENTINE 23-87-053-186

Dam - BROADHOOKS UBIQUITE HDJ03-001

gd CHAPELPARK ODETTE PFQ98-004 ggs AIRTNOCH LORD TAU95-015
gsd WILSON HARIOT WON92-014

Newtown Bonser is a full brother to AI sdire Newtown Bunty. Geant has a power packed pedigree on both sire and dam's side. G G Grandsire Etonnant is full brother to Ferry and Dam also goes back to Cannon. Two daughters of Bonser have sold for 7000 and 4000 euros respectively.

03 Frank McConalogue
CLOONEY GENO QDP11-003. Born 01/04/11. UK 9541548/0060-6. Got by AI.

ggs RONICK HAWK DY92-026
gs TANAT MOSTYN EAH96-018
ggd TANAT JADE EAH94-013

Sire - LIMO TANAT GGG02-004

ggs PELLETSTOWN KEN PELK-121
gd CARMORN ORNA MCN98-022
ggd CARMORN EXCELLENCE MCNE-004

ggs GEANT 19-91-000-217
gs NOTABLE 12-98-169-515
ggd JAQUETTE 12-94-114-754

Dam - CROOBVIEW DANIELLA JGR08-004

ggs GREENSONS GIGOLO GATG-009
gd BRIDGEFORD VALEENA MOJ04-002
ggd LYNDERG LUCILLE LDG95-020

04 Mr R.S. Clyde
CLYDEVALLEY GRAND CIW11-006. Born 18/04/11. UK 9062455/1027-4.

ggs WILODGE TONKA WEY02-002
gs WILODGE VANTASTIC WEY04-037
ggd RAVENELLE 23-51-224-583

Sire - CLYDEVALLEY DANTASTIC CIW08-031

ggs RONICK SPHERE DY01-303
gd CLYDEVALLEY AINSI CIW05-033
ggd CLYDEVALLEY OLIVE CIW98-001

ggs BROADMEADOWS CANNON CAVC-031
gs SARKLEY VACATION PBO04-038
ggd SARKLEY SONEYCOMB PBO01-124

Dam - CLYDEVALLEY CALENCIA CIW07-032

ggs GOLDIES OSWALD GS98-064
gd SARKLEY VALENCIA PBO04-030
ggd SARKLEY HANNAH PBO92-023

Has been used on our heifers.

05 Mr J A Quail
LYNDERG GOVERNOR LDG11-011. Born 02/05/11. UK 9271872/1060-1. Got by AI.

ggs BILL 87-86-007-209
gs ESPOIR 87-89-003-720
ggd AQUILA 87-85-005-279

Sire - OCEAN 19-98-001-293

ggs COUCOU 36-87-002-418
gd GLORIA 19-91-006-535
ggd POUPEE 19-79-001-666

ggs IDEAL 19-93-013-281
gs RIFIFI 23-51-224-622
ggd LAURETTE 23-95-069-956

Dam - ANITA 87-24-651-071

ggs MANOIR 87-96-012-823
gd TOKYO 87-24-650-811
ggd OLIVE 87-98-001-725

06 Mr L McEldowney
CARNTOGHER GAMIN MSU11-040. Born 10/05/11. UK 9561643/1729-1. Got by AI.

ggs TUNNELBY MONKEYTRICKS TAP96-001
 gs GUNNERFLEET PLUNAS HDR99-010
 ggd GUNNERFLEET LUNA HDR95-003-FOT

Sire - FIELDSON ALFY FCE05-384

ggs BROADMEADOWS CANNON CAVC-031
 gd EDEN NATASHA HCS97-074
 ggd BIRTLES DAISY NLD-029

ggs GOURMAND 19-91-003-932
 gs JOCKEY 19-94-006-256
 ggd COQUINE 19-87-003-797

Dam - DYFRI UNESCO EAC03-056

ggs JOULE 86-94-111-176
 gd DYFRI SYBIL EAC01-002
 ggd DYFRI NORDIC EAC97-016

07 Mr D Hume
CULNAGECHAN GOLDENBALLS HQG11-022. Born 24/05/11. UK 9060789/1320-3. Got by AI.

ggs LEO 23-95-071-399
 gs NENUPHAR 87-97-011-143
 ggd GIROFLEE 87-91-000-077

Sire - DOLCORSELLWYN BRYNMOR VU06-012

ggs BROADMEADOWS CANNON CAVC-031
 gd DOLCORSELLWYN PATSI VU99-004
 ggd EMUE 23-89-050-709

ggs PELLETSTOWN KEN PELK-121
 gs CARMORN ORBIT MCN98-014
 ggd CARMORN LILLY MCN95-020

Dam - CORNASCRIBIE STARLET PGN01-001

ggs PADDOCK HANNIBAL SHB92-072
 gd LOUGHSHIDE OMEGA PEG98-003
 ggd FOXFORD LAURA RDY95-002

Signet Recorded Weights **100** **200** **300** **400** **500**
 Last BLUP'd 10/03/2013 179 327 508 673

MLC	C E(%)	C V	200M(kg)	200G(kg)	400G(kg)	Fat(mm)	MD(mm)	BV
Data EBV	-1.2	LM+1C	+1	+7	+25	-0.5	+0.4	LM+20
Acc %	61		69	49	74	65	73	75
BLCS Index	109		103	110	85	94	125	83
								96

Dam bred bull to 3,500 gns, Overall Supreme Reserve Champion at Dungannon March 2010.

08 Mr V Chestnutt
CLOUGHER GAZZA **CLI11-011.** **Born 27/05/11.** **UK 9152479/0121-3.** **Got by AI.**

ggs DAUPHIN 19-88-004-715
gs JACOT 36-94-005-555
ggd VIOLETTE 36-84-701-052

Sire - **ROCKY 36-15-030-964**

ggs ELDORADO 36-89-000-419
gd GLOIRE 36-91-002-380
ggd BANANE 36-86-886-661

ggs TALENT 23-82-004-036
gs RONICK GAINS DYG-010
ggd BROADMEADOWS AINSI CAVA-003

Dam - **ASHMARA ORSOME MGP98-007**

ggs WILKESLEY SAMSON WBS-005
gd ASHMARA GALAXY MGPG-002
ggd LYNDERG DAMARAS LDGD-011

09 J & E Wilson T/A Lisnisk Farms
LISNISK GILLESPIE **WJL11-715.** **Born 28/05/11.** **UK 9272400/0471-5.** **Got by AI.**

ggs GAMIN 87-71-006-365
gs LAIRD 16-75-110-234
ggd CAROLINE 16-131-04-C-01

Sire - **TALENT 23-82-004-036**

ggs LEPREMIER 87-75-003-712
gd PRINCESSE 87-79-006-965
ggd JULIENNE 87-74-012-777

ggs GENIAL 87-91-002-491
gs GOLDIES THUNDERBOLT GS02-430
ggd DOUDOUNE 22-88-036-158

Dam - **EDENKENNEDY ANNA RFH05-001**

ggs JEANSONNET 23-94-011-796
gd EDENKENNEDY TRACY RFH02-001
ggd EDENKENNEDY PATRISSE RFH99-002

Has great shape front to back. Exceptional length & muscle.

10 Messrs. McKinney Brothers
HEATHMOUNT GENTRY MOF11-015. Born **04/06/11.** UK **9564413/0428-1.** Got by AI.

ggs HARICOT 22-92-003-011
 gs OCTOPUS 87-10-671-030
 ggd JUSTINE 87-94-005-984

Sire - SYMPA 48-01-006-969

ggs GENIAL 87-91-002-491
 gd OPERETTE 48-98-133-040
 ggd LAVANDE 48-15-341-488

ggs BROADMEADOWS VIP CAVV-024-FOT
 gs BROADMEADOWS CANNON CAVC-031
 ggd BROADMEADOWS AINSI CAVA-003

Dam - HEATHMOUNT PENNY MOF99-012

ggs SUMMERDALE EXCALABUR SFGE-001
 gd SHEARBARN GWENIVERE DCNG-007
 ggd UPLANDS DESIROUS HLD-425

Signet Recorded Weights **100** **200** **300** **400** **500**
 Last BLUP'd 10/03/2013 196 343 503 716

MLC	C E(%)	C V	200M(kg)	200G(kg)	400G(kg)	Fat(mm)	MD(mm)	BV
Data EBV	-1.3	LM+1C	-1	+30	+55	-0.3	+3.7	LM+31
Acc %	67		71	62	76	59	69	75
BLCS Index	108		105	99	112	115	111	114

11 Messrs. McKinney Brothers
HEATHMOUNT GAMEBOY MOF11-018. Born **05/06/11.** UK **9564413/0431-4.**

ggs JACOT 36-94-005-555
 gs REQUIN 36-15-031-134
 ggd MARIOLLE 36-96-011-412

Sire - BAILEA BULLION JAG06-048

ggs GREENSONS GIGOLO GATG-009
 gd BAILEA NIGHTOWL JAG97-039
 ggd BAILEA DAINTY JAGD-001

ggs GOURMAND 19-91-003-932
 gs JOCKEY 19-94-006-256
 ggd COQUINE 19-87-003-797

Dam - HEATHMOUNT AILEEN MOF05-006

ggs DAIM 19-88-005-833
 gd HEATHMOUNT OCTAVE MOF98-010
 ggd FINCH IMELDA GCU93-018

Signet Recorded Weights **100** **200** **300** **400** **500**
 Last BLUP'd 10/03/2013 191 339 498 708

MLC	C E(%)	C V	200M(kg)	200G(kg)	400G(kg)	Fat(mm)	MD(mm)	BV
Data EBV	-2.4	LM+1C	0	+22	+39	-0.3	+3.0	LM+25
Acc %	63		63	52	75	51	66	73
BLCS Index	101		105	104	103	104	112	105

CLASS TWO SENIOR BULLS BORN 08/06/11 – 31/07/11

12 Mr R.S. Clyde
CLYDEVALLEY GOVERNOR CIW11-010. **Born 08/06/11.** **UK 9062455/1031-1.**

ggs GOLDIES PORTERHOUSE GS99-022
gs RONICK SPHERE DY01-303
ggd RONICK PHAINSI DY99-524

Sire - CLYDEVALLEY COMET CIW07-031

ggs STAVELEY ICELAND BIW93-016-FOT
gd CLYDEVALLEY OPHERA CIW98-004
ggd KILMOUA HELENA CDW92-006

ggs RONICK HAWK DY92-026
gs TANAT MOSTYN EAH96-018
ggd TANAT JADE EAH94-013

Dam - CLYDEVALLEY REVONNE CIW00-012

ggs GRANGE BANDSMAN SADB-256
gd KILMOUA GRACE CDWG-001
ggd KILMOUA DARKY CDWD-003

13 Mr J A Quail
LYNDERG GUNNER LDG11-015. **Born 11/06/11.** **UK 9273052/0180-5.**

ggs OCTOPUS 87-10-671-030
gs SYMPA 48-01-006-969
ggd OPERETTE 48-98-133-040

Sire - LYNDERG DIMITRI LDG08-014

ggs HATARI 19-92-014-362
gd ONDINE 19-98-001-300
ggd GRAZIELLA 19-91-008-621

ggs ALASKA 87-85-003-165
gs LUDO 19-95-012-472
ggd FANY 19-90-006-313

Dam - LYNDERG VANESSA LDG04-012

ggs HATARI 19-92-014-362
gd ONDINE 19-98-001-300
ggd GRAZIELLA 19-91-008-621

Miss J Gilliland
14 BALLYROBIN GIFTED GFD11-006. Born 16/06/11. UK 9060908/1430-1. Got by AI.
 ggs VAINQUEUR 87-84-003-838
 gs GIGOLO 87-91-003-401
 ggd SERPOLETTE 36-81-000-942
Sire - MARQUIS 87-96-001-260
 ggs CAID 19-87-001-352
 gd ETAMINE 87-89-006-242
 ggd UNIVERSELLE 87-83-005-729
 ggs WILODGE TONKA WEY02-002
 gs WILODGE VANTASTIC WEY04-037
 ggd RAVENELLE 23-51-224-583
Dam - KEELTOWN DAIRY IE251079830134
 ggs NADALOU 19-97-018-773
 gd KEELTOWN ANNABELLE IE251079880089
 ggd ROUNDFORT ROSE IE271397790042

Signet Recorded Weights **100** **200** **300** **400** **500**
 Last BLUP'd 10/03/2013 175 314 453

MLC	C E(%)	C V	200M(kg)	200G(kg)	400G(kg)	Fat(mm)	MD(mm)	BV
Data EBV	-8.0	LM-3C	-1	+31	+51	+0.2	+2.7	LM+25
Acc %	57	64	54	69	66	54	63	68
BLCS Index	66	77	99	114	112	79	103	104

Mr D A Frew
15 FREWSTOWN GLORY FBH11-303. Born 20/06/11. UK 9123356/0697-7.
 ggs WILODGE TONKA WEY02-002
 gs WILODGE VANTASTIC WEY04-037
 ggd RAVENELLE 23-51-224-583
Sire - CARMORN CANTONA MCN07-040
 ggs JOCKEY 19-94-006-256
 gd CARMORN ROSIE MCN00-014
 ggd CARMORN HOLLY MCN92-012
 ggs GREENWELL MAJOR NK96-017
 gs HALTCLIFFE PREMIER RP99-025
 ggd GRETA 19-91-002-062
Dam - FREWSTOWN VALET FBH04-135
 ggs BALLYRICKARD MACHO DBA96-007
 gd FREWSTOWN RUSTY FBH00-056
 ggd FREWSTOWN NATALIE FBH97-016

16 Mr L McEldowney
CARNTOGHER GIGOLO MSU11-044. Born 02/07/11. UK 9561643/1743-1.

ggs OCTOPUS 87-10-671-030
gs SYMPA 48-01-006-969
ggd OPERETTE 48-98-133-040

Sire - CARNTOGHER DOMINO MSU08-006
ggs MERESIDE CHALLENGER HCGC-060
gd MUIRHOUSE LINESSE AAN95-074
ggd MUIRHOUSE FINESSE AANF-024

ggs JOCKEY 19-94-006-256
gs CARMORN ROCKY MCN00-009
ggd SOFLAW IRENE RAC93-192

Dam - CARNTOGHER UNIQUE MSU03-010
ggs REDPATHS JAGUAR REY94-001
gd CARNTOGHER RITA MSU00-002
ggd FLEETHILL NAPKIN GR97-026

17 Mr R.S. Clyde
CLYDEVALLEY GENERAL CIW11-033. Born 05/07/11. UK 9062455/1055-4.

ggs BROADMEADOWS VIP CAVV-024-FOT
gs BROADMEADOWS CANNON CAVC-031
ggd BROADMEADOWS AINSI CAVA-003

Sire - SARKLEY VACATION PB004-038
ggs JOCKEY 19-94-006-256
gd SARKLEY SONEYCOMB PB001-124
ggd SARKLEY ONEYCOMB PB098-258

ggs GOLDIES PORTERHOUSE GS99-022
gs RONICK SPHERE DY01-303
ggd RONICK PHAINSI DY99-524

Dam - CLYDEVALLEY AINSI CIW05-033
ggs GENUS HIDALGO 37-92-007-027
gd CLYDEVALLEY OLIVE CIW98-001
ggd CLYDEVALLEY LILY CIW95-002

18 Mr W & Miss J Lynch
LISBRACKEN GENERALLEE LES11-011. Born 17/07/11. UK 9541432/1401-1.

ggs BROADMEADOWS VIP CAVV-024-FOT
gs BROADMEADOWS CANNON CAVC-031
ggd BROADMEADOWS AINSI CAVA-003

Sire - SARKLEY SEBASTIAN PB001-135
ggs RONICK GAINS DYG-010
gd SARKLEY MARIANNE PB096-029
ggd SARKLEY ESMEALDA PBOE-002

ggs GOURMAND 19-91-003-932
gs JOCKEY 19-94-006-256
ggd COQUINE 19-87-003-797

Dam - LISBRACKEN VIRGINIA LES04-011
ggs TALENT 23-82-004-036
gd RONICK OPERA DY98-445
ggd RONICK MARIA DY96-003

Sired by the 23,000gns Sarkley Sebastian, full brother sold Dungannon February 2011 for 5600gns.

19 Mr W & Miss J Lynch
LISBRACKEN GOLIATH LES11-013. **Born 20/07/11.** **UK 9541432/1403-3.**

ggs BROADMEADOWS VIP CAVV-024-FOT
gs BROADMEADOWS CANNON CAVC-031
ggd BROADMEADOWS AINSI CAVA-003

Sire - SARKLEY SEBASTIAN PBO01-135

ggs RONICK GAINS DYG-010
gd SARKLEY MARIANNE PBO96-029
ggd SARKLEY ESMERALDA PBOE-002

ggs BAILEA OLYMPIA JAG98-071
gs RONICK TYPHOON DY02-335
ggd RONICK LYNETTE DY95-051

Dam - LISBRACKEN VELMA LES04-017

ggs WESTPIT NORDIC GAZ97-016
gd AGHADOLGAN ROXANNE SLC00-008
ggd DRUMMILLER MAUD DRU96-006

Strong growth bull sired by the 23,000gns Sarkley Sebastian.

20 Mr D Hume
CULNAGECHAN GLENFIDCH HQG11-037. **Born 29/07/11.** **UK 9060789/1360-1.**

ggs WILODGE TONKA WEY02-002
gs WILODGE VANTASTIC WEY04-037
ggd RAVENELLE 23-51-224-583

Sire - CARMORN COPILOT MCN07-038

ggs PELLETSTOWN KEN PELK-121
gd CARMORN PENNY MCN99-025
ggd CARMORN HELEN MCN92-002

ggs OAKLEY OSCAR PJO-019
gs MERESIDE FILIPO HCGF-176
ggd LUMBILAW UPSIDE OAU-056-FOT

Dam - BALLYDONAGHY NIGHTINGALE KCB97-001

ggs HYDESVILLE CADET PRC-111
gd ROBBSTOWN IONA ROB93-006
ggd ROBBSTOWN DONNA ROBD-015

Signet Recorded Weights **100** **200** **300** **400** **500**
Last BLUP'd 10/03/2013 178 331 646

MLC	C E(%)	C V	200M(kg)	200G(kg)	400G(kg)	Fat(mm)	MD(mm)	BV
Data EBV	-2.4	LM-1C	-2	+16	+24	-0.1	+2.2	LM+20
Acc %	66		68	53	75	74	67	74
BLCS Index	101		94	93	96	93	99	98
								97

Dam's progeny has bred bulls fetching 18,000 gns.

23 Mr W Campbell
SPAGE GERRY **CFS11-007.** **Born 11/08/11.** **UK 9102633/0411-3.**

ggs BAMBINO 19-86-005-742
 gs MAS DU CLO 23-96-032-213
 ggd COSETTE 23-87-051-003

Sire - KILLMACTRANSA DENMAN IE261094780178
 ggs GENEREUX 19-91-009-241
 gd PELLETSTOWN PIANO IE281523420294
 ggd MIMOSA PELM-153-FOT

ggs FESTIN 87-90-005-718
 gs MILBROOK R2K MILR-230
 ggd MILBROOK MONIQUE MILM-009-FOT

Dam - SPAGE BLOSSOM CFS06-002
 ggs RONICK LUKE DY95-010
 gd SPAGE TARA CFS02-001
 ggd BALLYCREELLY LOCKETT MEQ95-002

24 Mr C H Murray
ANNADALE GOLDFINGER MUX11-011. **Born 11/08/11.** **UK 9244515/122-4.** **Got by AI.**

ggs MALIBU 36-96-026-196
 gs PETUNIA 87-00-670-240
 ggd GATINE 87-91-002-851

Sire - CLOUGHHEAD UMPIRE HCX03-221
 ggs ESPAGNOL 23-89-055-553
 gd GASCOGNE 23-91-060-414
 ggd BAVETTE 23-86-005-590

ggs TARVIS 19-82-001-611
 gs RONICK ICEMAN DY93-018-FOT
 ggd BROADMEADOWS AINSI CAVA-003

Dam - ANNADALE EYECANDY MUX09-004
 ggs LIMO PEDRO GGG99-006
 gd ANNADALE UNA MUX03-001
 ggd FARLAND RUBY MEN00-005

Easy calving line. Excellent muscled bull.

25 Mr W Campbell
SPAGE GRANT **CFS11-008.** **Born 12/08/11.** **UK 9102633/0412-4.** **Got by AI.**

ggs BROADMEADOWS CANNON CAVC-031
 gs RONICK HAWK DY92-026
 ggd RONICK ESTHER DYE-040

Sire - TANAT MOSTYN EAH96-018
 ggs RONICK GAINS DYG-010
 gd TANAT JADE EAH94-013
 ggd TANAT FIESTA EAHF-004

ggs RYEDALE PARAGON DAC99-266
 gs ELRICK VANGUARD MNU04-023
 ggd ELRICK ROXANNE MNU00-011

Dam - SPAGE CIERA CFS07-006
 ggs CAIRNBANE EUAN FAME-015
 gd SPAGE OLIVE CFS98-008
 ggd NORMANDE BEZIQUE CAXB-031

26 Mr D Hume
CULNAGECHAN GIOVANNI HQG11-038. Born 17/08/11. UK 9060789/1365-6. Got by AI.
 Embryo Calf Yes

ggs SYMPA 48-01-006-969
 gs AMPERTAINÉ ABRACADABRA MGD05-014
 ggd AMPERTAINÉ PENNY MGD99-001

Sire - CULNAGECHAN EAGLE HQG09-001

ggs CLOUGHHEAD LORD HCX95-142
 gd KYPE VANESSA CAQ04-023
 ggd KYPE PETULA CAQ99-016

ggs JOUEUR 87-94-000-047
 gs RUBIS 23-00-242-130
 ggd FLAMENCA 23-90-014-809

Dam - CARMORN VILLA MCN04-038

ggs PELLETSTOWN KEN PELK-121
 gd CARMORN OAKLEY MCN98-037
 ggd RONICK BLONDE DYB-003

Signet Recorded Weights **100** **200** **300** **400** **500**
 Last BLUP'd 10/03/2013 174 326 651

MLC	C E(%)	C V	200M(kg)	200G(kg)	400G(kg)	Fat(mm)	MD(mm)	BV
Data EBV	0.3	LM+2C	-2	+10	+14	0	+2.5	LM+18
Acc %	60		68	48	73	66	72	74
BLCS Index	118		109	93	89	86	92	101

Dam has bred bulls to 11,000gns

27 Miss J Gilliland
BALLYROBIN GILLETTE GFD11-008. Born 22/08/11. UK 9060908/1448-5. Got by AI.

ggs BROADMEADOWS VIP CAVV-024-FOT
 gs BROADMEADOWS CANNON CAVC-031
 ggd BROADMEADOWS AINSI CAVA-003

Sire - RONICK HAWK DY92-026

ggs TALENT 23-82-004-036
 gd RONICK ESTHER DYE-040
 ggd ORCHARD VANILLA WAEV-019

ggs WAVERBANK NASSAU WAC97-291
 gs KYPE SPARTACUS CAQ01-040
 ggd KYPE POPPET CAQ99-007

Dam - BALLYROBIN ANASTACIA GFD05-001

ggs BROADMEADOWS CANNON CAVC-031
 gd BALLYROBIN SAVANNAH GFD01-002
 ggd BALLYROBIN OLIVIA GFD98-002

28 Mr W Campbell
SPAGE GARETH CFS11-010. Born 23/08/11. UK 9102633/0416-1.
 ggs BAMBINO 19-86-005-742
 gs MAS DU CLO 23-96-032-213
 ggd COSETTE 23-87-051-003
Sire - KILLMACTRANSA DENMAN IE261094780178
 ggs GENEREUX 19-91-009-241
 gd PELLETSTOWN PIANO IE281523420294
 ggd MIMOSA PELM-153-FOT
 ggs BROADMEADOWS CANNON CAVC-031
Dam - SPAGE VANESSA CFS04-007
 gs SPAGE RAMBO CFS00-001
 ggd SPAGE LAUREN CFS95-003
 ggs CARMORN OZONE MCN98-035
 gd SPAGE SWEETHEART CFS01-002
 ggd SPAGE GOLDIE CFSG-004

29 Messrs H & D McFarland
RAHONEY GIDEON MDS11-017. Born 26/08/11. UK 9634843/1068-2.
 ggs BAMBINO 19-86-005-742
 gs MAS DU CLO 23-96-032-213
 ggd COSETTE 23-87-051-003
Sire - DRUMMIN BEAU IE131206370510
 ggs MOUSTIC 12-96-163-972
 gd DRUMMIN PEACH IE131206330135
 ggd DRUMMIN LADY DINL-003
 ggs BALNACRAIG SUPREME CHT01-135
 gs HOMEBYRES VISITOR LAP04-041
 ggd HOMEBYRES RAFFLES LAP00-039
Dam - RAHONEY BETHANY MDS06-026
 ggs TANAT MOSTYN EAH96-018
 gd RAHONEY REBEKAH MDS00-012
 ggd RAHONEY MAXINE MDS96-012

Signet Recorded Weights **100** **200** **300** **400** **500**
 Last BLUP'd 10/03/2013 190 344 472 608

MLC	C E(%)	C V	200M(kg)	200G(kg)	400G(kg)	Fat(mm)	MD(mm)	BV
Data EBV	-3.4	LM+1C	+3	+27	+50	-0.2	+4.2	LM+28
Acc %	64		66	51	75	68	74	75
BLCS Index	95		104	122	109	111	105	115

Full brother IOverall Champion Dungannon February 2012 4800gns.

30 Donal Murray
TITCHBURN GREAT QBB11-007. Born 01/09/11. UK 9244614/26-3. Got by AI.
 ggs PENYRHEOL SAM PCU01-216
 gs HALTCLIFFE VERMOUNT RP04-042
 ggd RENONCULE 19-30-708-827
Sire - PROCTERS COMMANDER PFD07-239
 ggs GREENWELL RONICK NK00-054
 gd PROCTERS VABRIELLE PFD04-074
 ggd PROCTERS PHABRIELLE PFD99-042
 ggs VELINO 19-84-000-886
 gs DOMINO 19-88-001-780
 ggd ORCHIDEE 19-78-005-566
Dam - BALLYMONEY TWINKLE BLMT-114
 ggs GEANT 19-91-000-217
 gd MARSHA BLMM-010
 ggd BALLYMONEY KERRIE BLMK-006

Full brother sold at Carlisle in May 2012 for 4000gns.

31 Mr H McCracken
SEAVIEW GARETH MMV11-023. Born 02/09/11. UK 9332722/0641-5. Got by AI.
 ggs MALIBU 36-96-026-196
 gs PETUNIA 87-00-670-240
 ggd GATINE 87-91-002-851
Sire - CLOUGHHEAD UMPIRE HCX03-221
 ggs ESPAGNOL 23-89-055-553
 gd GASCOGNE 23-91-060-414
 ggd BAVETTE 23-86-005-590
 ggs JACOT 36-94-005-555
 gs ROCKY 36-15-030-964
 ggd GLOIRE 36-91-002-380
Dam - SEAVIEW CINDY MMV07-004
 ggs TANAT MOSTYN EAH96-018
 gd SEAVIEW TRICIA MMV02-004
 ggd SEAVIEW ODETTE MMV98-006

From our best cow family. Lots of size and milk behind him on dam's side.

CLASS FOUR INTERMEDIATE BULLS BORN 03/09/11 – 02/11/11

32 Mr R Crawford
ERNE GANNON **CFC11-076.** **Born 03/09/11.** **UK 9484139/0728-1.** **Got by AI.**

ggs GALOPIN 87-91-050-832
gs MEXICAIN 87-96-005-520
ggd ALLUMETTE 87-85-003-591

Sire - SAUVIGNON 23-02-858-738

ggs TARVIS 19-82-001-611
gd MANON 23-96-034-294
ggd ETINCELLE 23-89-665-402

ggs LOUXOR 19-95-010-819
gs KEATINGSTOWN VRAC IE211405180290
ggd KEATINGSTOWN NYMPH VXDK-0076M

Dam - KEATINGSTOWN EXPORT IE211405110524

ggs DAUPHIN 19-88-004-715
gd KEATINGSTOWN SUPER IE211405170199
ggd KEATINGSTOWN ISOBELLE KGSI-007

33 Mr H McCracken
SEAVIEW GERRY **MMV11-028.** **Born 16/09/11.** **UK 9332722/0648-5.** **Got by AI.**

ggs MALIBU 36-96-026-196
gs PETUNIA 87-00-670-240
ggd GATINE 87-91-002-851

Sire - CLOUGHHEAD UMPIRE HCX03-221

ggs ESPAGNOL 23-89-055-553
gd GASCOGNE 23-91-060-414
ggd BAVETTE 23-86-005-590

ggs VAINQUEUR 87-84-003-838
gs IMPERIAL 87-93-000-421
ggd AMORCE 87-85-005-467

Dam - MILBROOK BERYL IE281084590657

ggs BROADMEADOWS CANNON CAVC-031
gd MILBROOK MARY FKZP-0047P
ggd MILBROOK DAWN MILD-003-FOT

Easy calving in the sire's pedigree.

34 Mr D Hume
CULNAGECHAN GAMBLER HQG11-043. Born 21/09/11. UK 9060789/1371-5.

ggs WILODGE TONKA WEY02-002
gs WILODGE VANTASTIC WEY04-037
ggd RAVENELLE 23-51-224-583

Sire - CARMORN COPILOT MCN07-038
ggs PELLETSTOWN KEN PELK-121
gd CARMORN PENNY MCN99-025
ggd CARMORN HELEN MCN92-002

ggs WAVERBANK NASSAU WAC97-291
gs KYPE SPARTACUS CAQ01-040
ggd KYPE POPPET CAQ99-007

Dam - CARMORN VELVET MCN04-016
ggs PELLETSTOWN KEN PELK-121
gd CARMORN OLIVE MCN98-009
ggd CARMORN LIZZIE MCN95-022-FOT

Signet Recorded Weights **100** **200** **300** **400** **500**
Last BLUP'd 10/03/2013 194 358 547 722

MLC	C E(%)	C V	200M(kg)	200G(kg)	400G(kg)	Fat(mm)	MD(mm)	BV	
Data EBV	-2.1	LMOC	+4	+21	+50	-0.2	+2.4	LM+32	
Acc %	63		66	51	75	74	68	73	75
BLCS Index	103		96	127	102	111	105	100	115

Dam's last two sons have sold at Carlisle: Culnagechan Executive, Intermediate Champion 8,000gns Oct 2010; Culnagechan Fieldmarshallmontgomery, Senior Champion February 2012 sold for 11,000gns.

35 Mr D A Frew
FREWSTOWN GODSGIFT FBH11-313. Born 26/09/11. UK 9123356/0707-3.

ggs WILODGE TONKA WEY02-002
gs WILODGE VANTASTIC WEY04-037
ggd RAVENELLE 23-51-224-583

Sire - CARMORN CANTONA MCN07-040
ggs JOCKEY 19-94-006-256
gd CARMORN ROSIE MCN00-014
ggd CARMORN HOLLY MCN92-012

ggs GREENWELL MAJOR NK96-017
gs HALTCLIFFE PREMIER RP99-025
ggd GRETA 19-91-002-062

Dam - FREWSTOWN VAINQUEUR FBH04-156
ggs DIMITRI 87-88-007-553
gd FREWSTOWN MIRACLE FBH96-015
ggd JAVA 19-94-001-075

36 Berry Bros
BANVILLE GLENROSS BGM11-035. Born 01/10/11. UK 9270047/8254-7.

gs MILBROOK TANKO MILT-407
 ggs MAS DU CLO 23-96-032-213
 ggd MILBROOK MONIQUE MILM-009-FOT

Sire - BEECHLODGE CHANCELLOR BII07-034
 gd BEECHLODGE NIKITA BII97-014
 ggs IVAN 31-93-023-748
 ggd CREEVY HONEY CRY92-010-FOT

Dam - KNOCKHILL SOLA PEE01-120
 gs NEWHOUSE NOEL AC97-023
 ggd WESTHALL JAN FS94-001
 gd KNOCKHILL OLOLA PEE98-030
 ggs RATHKEELAND JUMBO CBL94-002
 ggd GLEBEDALE JOLOLA LV94-002

37 Berry Bros
BANVILLE GOOSEBERRY BGM11-037. Born 04/10/11. UK 9270047/8256-2.

gs MILBROOK TANKO MILT-407
 ggs MAS DU CLO 23-96-032-213
 ggd MILBROOK MONIQUE MILM-009-FOT

Sire - BEECHLODGE CHANCELLOR BII07-034
 gd BEECHLODGE NIKITA BII97-014
 ggs IVAN 31-93-023-748
 ggd CREEVY HONEY CRY92-010-FOT

Dam - FLEENASNAGAELE SALENE MIB01-016
 gs WILSON JUPITER WON94-097
 ggd PEASLEY EDWINA BBJE-024-FOT
 gd HUXLEY FIDA PAIF-004
 ggs RAKE TERENCE JKT-020
 ggd TANHILL AIDA FBA-287

38 Messrs L & R Allison
SCOTCHTOWN GOLDDIGGER ADY11-026. Born 04/10/11. UK 9520015/5197-1. Got by AI.

gs ELITE POPSI TOLP-010-FOT
 ggs FERRY 19-90-003-045
 ggd BALLYNERRIN MAUD BNIM-002

Sire - VIRGINIA ANDY IE121657690563
 gd MARLHILL NAOMI MAHN-004
 ggs CARWIN FLOW CARF-006
 ggd MARLHILL ELMA MAHE-002

Dam - SCOTCHTOWN DIOLA ADY08-005
 gs HOMEBYRES VISITOR LAP04-041
 ggd HOMEBYRES RAFFLES LAP00-039
 gd SCOTCHTOWN VIOLA ADY04-005
 ggs SHIRE MILTON EL96-354-FOT
 ggd SCOTCHTOWN SANDY ADY01-005

39 Mr I N Davidson
BALLYRICKARD GORDY DBA11-022. Born 04/10/11. UK 9102545/0399-3. Got by AI.
 Embryo Calf Yes

ggs OXYGENE 12-98-171-453
 gs WILODGE TONKA WEY02-002
 ggd WILODGE MECLAIRE WEY96-022
Sire - WILODGE CERBERUS WEY07-010
 ggs BROADMEADOWS CANNON CAVC-031
 gd WILODGE PRICELESS WEY99-032
 ggd WILODGE LITTLEDEM WEY95-027
 ggs GABARIT 72-91-110-535
 gs GRANGE NAVAJO SAD97-126
 ggd GRANGE INDIENNE SAD93-769
Dam - BALLYRICKARD RACHEL DBA00-001
 ggs WILKESLEY SAMSON WBS-005
 gd BALLYRICKARD FLO DBAF-002
 ggd BALLYRICKARD DAISY DBAD-001

40 Mr J D Rainey
CLARAGH GALILEO RJT11-033. Born 22/10/11. UK 9491073/0347-7. Got by AI.

ggs MALIBU 36-96-026-196
 gs PETUNIA 87-00-670-240
 ggd GATINE 87-91-002-851
Sire - CLOUGHHEAD UMPIRE HCX03-221
 ggs ESPAGNOL 23-89-055-553
 gd GASCOGNE 23-91-060-414
 ggd BAVETTE 23-86-005-590
 ggs BALNACRAIG SUPREME CHT01-135
 gs HOMEBYRES VISITOR LAP04-041
 ggd HOMEBYRES RAFFLES LAP00-039
Dam - CLARAGH EVITA RJT09-010
 ggs NENUPHAR 87-97-011-143
 gd GLENISLA ANGLE IE291636030157
 ggd NATACHA 16-97-120-336

Signet Recorded Weights **100** **200** **300** **400** **500**
 Last BLUP'd 10/03/2013 155 270 418 576 715

MLC	C E(%)	C V	200M(kg)	200G(kg)	400G(kg)	Fat(mm)	MD(mm)	BV
Data EBV	0.1	LM+1C	+1	+9	+25	-0.5	+2.0	LM+20
Acc %	63		68	55	72	63	69	72
BLCS Index	117		106	110	88	94	125	97

41 Mr G M McCague
BRIDGEVIEW GIGOLO MQV11-027. **Born 02/11/11.** **UK 9420414/776-5.** **Got by AI.**

ggs JANVIER 86-94-111-257
 gs OXYGENE 12-98-171-453
 ggd ISOCELE 12-93-112-437

Sire - WILODGE TONKA WEY02-002

ggs BRONTEMOOR ILKLEY PCI93-012
 gd WILODGE MECLAIRE WEY96-022
 ggd NEWSHAM ECLAIRE BAUE-025

ggs GENIAL 87-91-002-491
 gs NECTAR 19-97-013-151
 ggd FRINGANTE 19-90-002-509

Dam - TYRONE ARAINE WKX05-011

ggs MICMAC 87-96-005-024
 gd TOURAINE 71-21-062-592
 ggd INTENDANTE 19-93-013-016

Exceptional confirmation, very quiet, terrific French bloodlines. Will make a super stock bull.

CLASS FIVE INTERMEDIATE BULLS BORN 03/11/11 – 23/11/11

42 Michael F Doyle
TULLYBRICK GENT DJJ11-003. **Born 03/11/11.** **UK 9564392/180-5.** **Got by AI.**

ggs JANVIER 86-94-111-257
 gs OXYGENE 12-98-171-453
 ggd ISOCELE 12-93-112-437

Sire - WILODGE TONKA WEY02-002

ggs BRONTEMOOR ILKLEY PCI93-012
 gd WILODGE MECLAIRE WEY96-022
 ggd NEWSHAM ECLAIRE BAUE-025

ggs RONICK RASCARD DY00-122
 gs ROSECROFT BERTIE WFD06-073
 ggd GRAHAMS TULIP GV02-139

Dam - ARCHIES ENYA MXT09-015

ggs WESTPIT NORDIC GAZ97-016
 gd AGHADOLGAN SALECHE SLC01-028
 ggd RATHGRANGE NALECHE WGI97-007

43 Paul Brown
RATHCONVILLE GUY BTH11-038. Born 03/11/11. UK 9241909/0343-7.

ggs VIGOR 19-31-699-451
 gs CAID 19-32-605-247
 ggd PIROUETTE 19-30-348-606

Sire - ESCOULOUBRE 19-33-435-501

ggs ORAGE 19-30-348-559
 gd UTAH 19-31-589-235
 ggd PENAUDE 19-30-648-801

Dam - BANVILLE BEAUT BGM06-025

ggs OCEAN 19-98-001-293
 gs CAIRNWAYS UTOPIA CLP03-003
 ggd CAIRNWAYS ROBERTA CLP00-001

ggs UPLANDS BATMAN HLB-367
 gd HOLLYBANK PENNY SGT99-004
 ggd HOLLYBANK FELICITY SGTf-004

44 Michael F Doyle
TULLYBRICK GOLDDUST DJJ11-004. Born 04/11/11. UK 9564392/0179-4. Got by AI.

ggs OXYGENE 12-98-171-453
 gs WILODGE TONKA WEY02-002
 ggd WILODGE MECLAIRE WEY96-022

Sire - WILODGE VANTASTIC WEY04-037

ggs JERSEY 36-94-000-548
 gd RAVENELLE 23-51-224-583
 ggd ISABELLE 23-93-050-424

Dam - DRUMADARRAGH ULTRA DET03-003

ggs GIGOLO 87-91-003-401
 gs MARQUIS 87-96-001-260
 ggd ETAMINE 87-89-006-242

ggs JEROME 23-94-026-101
 gd REDROCK OASIS DX98-004
 ggd REDROCK LONGWAVE DX95-010

Wilodge Vantastic son out of a very good big milky cow.

45 Berry Bros
BANVILLE GENERAL BGM11-041. Born 08/11/11. UK 9270047/8259-5.

ggs MAS DU CLO 23-96-032-213
 gs MILBROOK TANKO MILT-407
 ggd MILBROOK MONIQUE MILM-009-FOT

Sire - BEECHLODGE CHANCELLOR BII07-034

ggs IVAN 31-93-023-748
 gd BEECHLODGE NIKITA BII97-014
 ggd CREEVY HONEY CRY92-010-FOT

Dam - BANVILLE DAVINA BGM08-012

ggs NENUPHAR 87-97-011-143
 gs BREMORE VANDAL IE171088830082
 ggd BREMORE PIXIE IE171000560077

ggs BAMBOU 35-86-034-446
 gd PACOTILLE 19-30-086-880
 ggd BAVARDE 19-86-010-902

48 Mr RAG Savage
AGHADOLGAN GUNTHER SLC11-029. **Born 15/11/11.** **UK 9492481/314-6.** **Got by AI.**
Embryo Calf Yes

ggs JANVIER 86-94-111-257
gs OXYGENE 12-98-171-453
ggd ISOCELE 12-93-112-437

Sire - WILODGE TONKA WEY02-002

ggs BRONTEMOOR ILKLEY PCI93-012
gd WILODGE MECLAIRE WEY96-022
ggd NEWSHAM ECLAIRE BAUE-025

ggs OCEAN 19-98-001-293
gs SEAVIEW UPSTART MMV03-033
ggd SEAVIEW POSH MMV99-015

Dam - BRONTEMOOR BOBBYDAZZLER PCI06-049

ggs HARTSIDE HENSINGHAM TW92-545
gd BRONTEMOOR LISA PCI95-021
ggd BRONTEMOOR HARMONY PCI92-008

Bobbydazzler's first bull sold in Carlisle October 2010 for 17,000 gns

49 Mr RAG Savage
AGHADOLGAN GEORGE SLC11-030. **Born 16/11/11.** **UK 9492481/315-7.** **Got by AI.**
Embryo Calf Yes

ggs JANVIER 86-94-111-257
gs OXYGENE 12-98-171-453
ggd ISOCELE 12-93-112-437

Sire - WILODGE TONKA WEY02-002

ggs BRONTEMOOR ILKLEY PCI93-012
gd WILODGE MECLAIRE WEY96-022
ggd NEWSHAM ECLAIRE BAUE-025

ggs OCEAN 19-98-001-293
gs SEAVIEW UPSTART MMV03-033
ggd SEAVIEW POSH MMV99-015

Dam - BRONTEMOOR BOBBYDAZZLER PCI06-049

ggs HARTSIDE HENSINGHAM TW92-545
gd BRONTEMOOR LISA PCI95-021
ggd BRONTEMOOR HARMONY PCI92-008

Bobbydazzler's first bull sold in Carlisle October 2010 for 17,000 gns.

CLASS SIX INTERMEDIATE BULLS

BORN 24/11/11 – 08/12/11

52 Mr V J Keys
TOGHERDOO GOAL **KCY11-013.** **Born 24/11/11.** **UK 9631492/0821-1.** **Got by AI.**
 Embryo Calf Yes

Sire - **BROADMEADOWS CANNON CAVC-031**
 ggs FAVORI 87-70-001-552
 gs BROADMEADOWS VIP CAVV-024-FOT
 ggd HAMPTON NADINE JBN-015

Dam - **ASHMARA CLASSYGIRL MGP07-015**
 ggs TANHILL RUMPUS FBR-092
 gd BROADMEADOWS AINSI CAVA-003
 ggd BROADMEADOWS TANSY CAVT-002

ggs JACOT 36-94-005-555
 gs ROCKY 36-15-030-964
 ggd GLOIRE 36-91-002-380

ggs REDROCK ORLANDO DX98-001
 gd CRACROP ULTIMATEGIRL SMR03-096
 ggd SOMERFORD HALO FBC92-002-FOT

Signet Recorded Weights **100** **200** **300** **400** **500**
 Last BLUP'd 10/03/2013 161 282 418 559

MLC	C E(%)	C V	200M(kg)	200G(kg)	400G(kg)	Fat(mm)	MD(mm)	BV
Data EBV	-2.9	LM+1C	-3	+27	+52	-0.5	+3.9	LM+31
Acc %	63		71	61	76	75	69	75
BLCS Index	98		104	87	109	113	125	113

Maternal brother sold for £8000.

53 Mr V J Keys
TOGHERDOO GENERAL **KCY11-016.** **Born 25/11/11.** **UK 9631492/0824-4.** **Got by AI.**
 Embryo Calf Yes

Sire - **BROADMEADOWS CANNON CAVC-031**
 ggs FAVORI 87-70-001-552
 gs BROADMEADOWS VIP CAVV-024-FOT
 ggd HAMPTON NADINE JBN-015

Dam - **ASHMARA CLASSYGIRL MGP07-015**
 ggs TANHILL RUMPUS FBR-092
 gd BROADMEADOWS AINSI CAVA-003
 ggd BROADMEADOWS TANSY CAVT-002

ggs JACOT 36-94-005-555
 gs ROCKY 36-15-030-964
 ggd GLOIRE 36-91-002-380

ggs REDROCK ORLANDO DX98-001
 gd CRACROP ULTIMATEGIRL SMR03-096
 ggd SOMERFORD HALO FBC92-002-FOT

Signet Recorded Weights **100** **200** **300** **400** **500**
 Last BLUP'd 10/03/2013 159 290 410 525

MLC	C E(%)	C V	200M(kg)	200G(kg)	400G(kg)	Fat(mm)	MD(mm)	BV
Data EBV	-3.2	LM+1C	-4	+24	+44	-0.5	+2.8	LM+25
Acc %	63		71	61	76	75	69	75
BLCS Index	96		106	81	105	107	125	103

Maternal brother sold for £8000

54 Mr M Loughran
MILLGATE GAVIN LFR11-038. Born 26/11/11. UK 9630001/2399-4. Got by AI.
 gs SYMPA 48-01-006-969
 ggd OPERETTE 48-98-133-040
 Sire - **MILLGATE DERRY LFR08-037**
 ggs FERRY 19-90-003-045
 gd BROOKLAND TULIP ANDT-091
 ggd NATION 87-97-012-451
 ggs ALMSCLIFFE ALEXANDER MBSA-004
 gs FEDNEYHOUSE LAIRD ACU95-003
 ggd DIAMOND FAIRYPRINCESS MFHF-007
 Dam - **MILLGATE TINA LFR02-008**
 ggs CLOUGHHEAD GLENDERAMACKIN HCXG-039-FOT
 gd MILLWATER PAMELA MWR99-001
 ggd MILLWATER LACEY MWR95-061

Signet Recorded Weights 100 200 300 400 500
 Last BLUP'd 10/03/2013 172 302 419 544

MLC	C E(%)	C V	200M(kg)	200G(kg)	400G(kg)	Fat(mm)	MD(mm)	BV
Data EBV	-0.7	LM+3C	+1	+19	+38	-0.4	+0.7	LM+20
Acc %	58		67	48	73	72	64	74
BLCS Index	112		122	110	99	103	119	86

Millgate Gavin's sire, Millgate Derry, sold in Carlisle May 2010 for 20,000gns. Easy calving strain.

55 Mr M Loughran
MILLGATE GENERAL LFR11-039. Born 28/11/11. UK 9636813/0005-1. Got by AI.
 Embryo Calf Yes
 ggs WILODGE TONKA WEY02-002
 gs WILODGE VANTASTIC WEY04-037
 ggd RAVENELLE 23-51-224-583
 Sire - **CARMORN COPILOT MCN07-038**
 ggs PELLETSTOWN KEN PELK-121
 gd CARMORN PENNY MCN99-025
 ggd CARMORN HELEN MCN92-002
 ggs BAMBINO 19-86-005-742
 gs MAS DU CLO 23-96-032-213
 ggd COSETTE 23-87-051-003
 Dam - **BALLYLINE UDIMA IE311149640243**
 ggs DAUPHIN 19-88-004-715
 gd RITA BYER-142
 ggd NUALA BYEN-002

Signet Recorded Weights 100 200 300 400 500
 Last BLUP'd 10/03/2013 185 343 477 608

MLC	C E(%)	C V	200M(kg)	200G(kg)	400G(kg)	Fat(mm)	MD(mm)	BV
Data EBV	-7.4	LM-4C	+2	+41	+70	-0.3	+5.7	LM+41
Acc %	66		72	52	75	74	67	74
BLCS Index	70		73	116	125	125	112	128

Millgate General is an embryo bull with top bloodlines: Carmorn Copilot, Wilodge Vantastic, Mas du Clo, Dauphin and the famous Carmorn Penny. Millgate General also has a great beef value to match.

56 Mr M R G Watson
HILLHEAD GOODMAN WAN11-007. **Born 28/11/11.** **UK 9331319/536-7.** **Got by AI.**

ggs DAUPHIN 19-88-004-715
 gs JACOT 36-94-005-555
 ggd VIOLETTE 36-84-701-052

Sire - ROCKY 36-15-030-964

ggs ELDORADO 36-89-000-419
 gd GLOIRE 36-91-002-380
 ggd BANANE 36-86-886-661

ggs RONICK GAINS DYG-010
 gs SHIRE MILTON EL96-354-FOT
 ggd CROWNHEAD COLOMBE BBAC-051

Dam - HILLHEAD TAMMY WAN02-015

ggs STOCKDALES MUSCULAR SDC96-012
 gd HILLHEAD PEPSI WAN99-011
 ggd HILLHEAD CAROLINE WANC-002

57 Mr W & Miss J Lynch
LISBRACKEN GRAHAM LES11-022. **Born 05/12/11.** **UK 9541432/1412-5.** **Got by AI.**

ggs OCTOPUS 87-10-671-030
 gs SYMPA 48-01-006-969
 ggd OPERETTE 48-98-133-040

Sire - WOODROAD DONALD IE241241661053

ggs HORION 87-92-050-517
 gd OV NADIA B 86-97-111-951
 ggd GARDE ROBE 86-91-111-947

ggs CARSE IMPACT DDJ93-006
 gs WESTPIT NORDIC GAZ97-016
 ggd WESTPIT ISLA GAZ93-018

Dam - AGHADOLGAN SALLYANNE SLC01-010

ggs GOLDIES CARLOS GSC-036
 gd LUMBYLAW MARYPORT OA96-470
 ggd LUMBYLAW DORIC OAD-113

Long, well-muscled bull. A grandson of the notorious Nadia B.

58 Mr J McClintock
REIDSTOWN GREATBALLSOFFIRE MVL11-105. **Born 07/12/11.** **UK 9123715/1310-5.** **Got by AI.**

ggs OCTOPUS 87-10-671-030
 gs SYMPA 48-01-006-969
 ggd OPERETTE 48-98-133-040

Sire - AMPERTAINNE ABRACADABRA MGD05-014

ggs STOCKDALES MUSCULAR SDC96-012
 gd AMPERTAINNE PENNY MGD99-001
 ggd AMPERTAINNE HANNAH MGD92-003

ggs BROADMEADOWS CANNON CAVC-031
 gs RONICK HAWK DY92-026
 ggd RONICK ESTHER DYE-040

Dam - REIDSTOWN ULREKA MVL03-001

ggs HOLCOMBE HEREDITY FA092-059
 gd CRYNOCH PRINCESS CFF99-277
 ggd CRYNOCH JILL CFF94-093

59 Messrs F & P Owens
DRUMDUFF GUSSY OBU11-144. Born 08/12/11. UK 9636669/144-5. Got by AI.
 ggs PETUNIA 87-00-670-240
 gs CLOUGHHEAD UMPIRE HCX03-221
 ggd GASCOGNE 23-91-060-414
Sire - PLUMTREE DEUS CQE08-003
 ggs SYMPA 48-01-006-969
 gd BANKDALE AMBER WLJ05-095
 ggd PRINCESSE 87-08-920-187
 ggs CLOUGHHEAD UMPIRE HCX03-221
 gs HALTCLIFFE BOURBON RP06-564
 ggd HALTCLIFFE VANILLA RP04-025
Dam - DRUMDUFF EMMA OBU09-004
 ggs GAULOIS 19-91-012-150
 gd DRUMDUFF AMANDA OBU05-044
 ggd CRAIGATOKO RIBENA CDZ00-011

Stylish & Correct.

60 Mr D Hume
CULNAGECHAN GRENEIER HQG11-048. Born 08/12/11. UK 9060789/1385-5.
 ggs OXYGENE 12-98-171-453
 gs WILODGE TONKA WEY02-002
 ggd WILODGE MECLAIRE WEY96-022
Sire - HARTLAW EXCALIBER MUE09-378
 ggs NENUPHAR 87-97-011-143
 gd HARTLAW BLUEBERRY MUE06-235
 ggd GLENROCK JUNIPER IE94-010
 ggs DAUPHIN 19-88-004-715
 gs LASCARD 12-95-160-961
 ggd HOLLYWOOD 23-92-010-909
Dam - GOLDIES TOPCLASS GS02-442
 ggs TALENT 23-82-004-036
 gd RONICK NAINSI DY97-041-FOT
 ggd BROADMEADOWS AINSI CAVA-003

Signet Recorded Weights **100** **200** **300** **400** **500**
 Last BLUP'd 10/03/2013 203 359 508

MLC	C E(%)	C V	200M(kg)	200G(kg)	400G(kg)	Fat(mm)	MD(mm)	BV
Data EBV	-10.0	LM-6C	0	+39	+74	-0.3	+5.9	LM+41
Acc %	65		67	51	75	70	65	73
BLCS Index	53		56	104	123	128	112	129
								131

Full sister to dam has bred bulls to 20,000gns.

61 Broadhooks Cattle Company
BROADHOOKS GRENAIER HDJ11-012. Born 08/12/11. UK 9102554/0091-4.

gs MAS DU CLO 23-96-032-213
 ggs BAMBINO 19-86-005-742
 ggd COSETTE 23-87-051-003

Sire - NEWTOWN BONSER IE231230670382
 gd CASTLEVIEW RUB IE191567170232
 ggs IDEAL 23-93-045-394
 ggd CASTLEVIEW MISS CDTF-0044W

Dam - BROADHOOKS DEIRDRE HDJ08-001
 gd GLENROCK NIMBLE IE97-032
 ggs JONGLEUR 19-94-007-673
 ggd KRYSTELLE PELK-115
 ggs HALTCLIFFE EGIDIUS RPE-021
 ggd GLENROCK JADE IE94-005

Broadhooks Grenadier is a classy young bull with excellent top line. He didn't get a good start as he lost his mother at 2½ months. His grandsire Pelletstown Newman bred bulls to 14000 euros and his great granddam Pelletstown Krystal was a prolific show winner.

CLASS SEVEN JUNIOR BULLS BORN 10/12/11 – 01/01/12

62 Messrs H & D McFarland
RAHONEY GOLDEN MDS11-022. Born 10/12/11. UK 9634843/1078-5.

gs MAS DU CLO 23-96-032-213
 ggs BAMBINO 19-86-005-742
 ggd COSETTE 23-87-051-003

Sire - DRUMMIN BEAU IE131206370510
 gd DRUMMIN PEACH IE131206330135
 ggs MOUSTIC 12-96-163-972
 ggd DRUMMIN LADY DINL-003

Dam - RAHONEY CORAL MDS07-022
 gd RAHONEY MARTHA MDS96-003
 ggs BROADMEADOWS CANNON CAVC-031
 ggd RONICK ESTHER DYE-040
 ggs SHIRE HANDSOME EL92-183-FOT
 ggd RAHONEY FAITH MDSF-003

Signet Recorded Weights **100** **200** **300** **400** **500**
 Last BLUP'd 10/03/2013 153 422 554

MLC	C E(%)	C V	200M(kg)	200G(kg)	400G(kg)	Fat(mm)	MD(mm)	BV
Data EBV	-3.6	LM+1C	+2	+24	+44	-0.1	+3.3	LM+29
Acc %	61	63	47	68	70	63	67	70
BLCS Index	93	103	116	105	107	99	108	111

Full sister sold Ballymena May 2012 for 3000gns.

63 Mr D Hume
CULNAGECHAN GURKHA HQG11-049. Born 10/12/11. UK 9060789/1386-6.

ggs SYMPA 48-01-006-969
 gs AMPERTAINÉ ABRACADABRA MGD05-014
 ggd AMPERTAINÉ PENNY MGD99-001

Sire - CULNAGECHAN EAGLE HQG09-001

ggs CLOUGHHEAD LORD HCX95-142
 gd KYPE VANESSA CAQ04-023
 ggd KYPE PETULA CAQ99-016

Dam - AGHADOWEY VIXEN SNU04-002

ggs ROMEO 87-80-005-214
 gs DAUPHIN 19-88-004-715
 ggd OMBRETTE 19-78-003-500

ggs GENEREUX 19-91-009-241
 gd PELLETSTOWN SARAH PELS-403
 ggd PELLETSTOWN LADY PELL-102-FOT

Signet Recorded Weights 100 200 300 400 500
 Last BLUP'd 10/03/2013 185 340 494

MLC	C E(%)	C V	200M(kg)	200G(kg)	400G(kg)	Fat(mm)	MD(mm)	BV
Data EBV	1.1	LM+4C	0	+20	+36	+0.1	+2.1	LM+24
Acc %	55		58	42	70	63	62	70
BLCS Index	123		124	104	101	101	85	103

Sire was Reserve Junior Champion at Balmoral 2010, very easy calving value of +4.

64 Albert Finney
CHINAULEY GRANT FFV11-05914. Born 12/12/11. UK 9270296/0591-4. Got by AI.
 Embryo Calf Yes

ggs HARICOT 22-92-003-011
 gs OCTOPUS 87-10-671-030
 ggd JUSTINE 87-94-005-984

Sire - SYMPA 48-01-006-969

ggs GENIAL 87-91-002-491
 gd OPERETTE 48-98-133-040
 ggd LAVANDE 48-15-341-488

Dam - LIMO VIXEN GGG04-010

ggs RONICK GAINS DYG-010
 gs SHIRE MILTON EL96-354-FOT
 ggd CROWNHEAD COLOMBE BBAC-051

ggs GAG 87-91-011-902
 gd OSKA 87-15-250-995
 ggd LAVANDE 87-95-000-091

Signet Recorded Weights 100 200 300 400 500
 Last BLUP'd 10/03/2013 201 355 486 629

MLC	C E(%)	C V	200M(kg)	200G(kg)	400G(kg)	Fat(mm)	MD(mm)	BV
Data EBV	-3.0	LMOC	0	+33	+56	-0.2	+5.3	LM+37
Acc %	65		67	62	75	71	62	74
BLCS Index	97		96	104	116	116	105	123

An embryo calf by the prolific Sympa out of Limo Vixen (7000 Limo Dispersal, her daughter Limo Ellen £6000). Excellent shape and figures, will be an asset to any herd.

264 Mr & Mrs M & A McPolin
NEWHILLFARM GIN MSC11-162. Born 12/12/11. UK 9422164/0411-4. Got by AI.
 Grade: 99%

Sire - ggs ROMEO 87-80-005-214
 gs DAUPHIN 19-88-004-715
 ggd OMBRETTE 19-78-003-500
CARMORN DAUPHIN MCN08-010
 ggs PELLETSTOWN KEN PELK-121
 gd CARMORN PENNY MCN99-025
 ggd CARMORN HELEN MCN92-002

Dam - ggs BROADMEADOWS CANNON CAVC-031
 gs RONICK HAWK DY92-026
 ggd RONICK ESTHER DYE-040
NEWHILLFARM AISLING MSC05-057
 ggs HORION 87-92-050-517
 gd NEWHILLFARM URIKA MSC03-027
 ggd HILLFARM PETE HIL99-055

Signet Recorded Weights 100 200 300 400 500
 Last BLUP'd 10/03/2013 163 287 426 573

MLC	C E(%)	C V	200M(kg)	200G(kg)	400G(kg)	Fat(mm)	MD(mm)	BV
Data EBV	-1.1	LM+1C	+4	+20	+48	-0.2	+2.1	LM+29
Acc %	58		67	50	74	57	68	73
BLCS Index	109		104	127	101	110	105	98
								111

Newhillfarm Gin is at tall bull and has a +4 for milk, making him ideal for breeding your own replacements. His pedigree includes CARMORN DAUPHIN and RONICK HAWK

65 Messrs F & P Owens
DRUMDUFF GERRY OBU11-146. Born 13/12/11. UK 9636669/146-7. Got by AI.

Sire - ggs PETUNIA 87-00-670-240
 gs CLOUGHHEAD UMPIRE HCX03-221
 ggd GASCOGNE 23-91-060-414
PLUMTREE DEUS CQE08-003
 ggs SYMPA 48-01-006-969
 gd BANKDALE AMBER WLJ05-095
 ggd PRINCESSE 87-08-920-187

Dam - ggs JACOT 36-94-005-555
 gs ROCKY 36-15-030-964
DRUMDUFF ELLEN OBU09-013
 ggd GLOIRE 36-91-002-380
 ggs SHIRE HANDSOME EL92-183-FOT
 gd CRAIGATOKE ROMANCE CDZ00-004
 ggd CRAIGATOKE DELMA CDZD-002

Stylish & Correct.

66 Mr D Hume
CULNAGECHAN GOVERNOR HQG11-053. Born 14/12/11. UK 9060789/1390-3.

ggs WILODGE TONKA WEY02-002
gs WILODGE VANTASTIC WEY04-037
ggd RAVENELLE 23-51-224-583

Sire - CARMORN COPILOT MCN07-038

ggs PELLETSTOWN KEN PELK-121
gd CARMORN PENNY MCN99-025
ggd CARMORN HELEN MCN92-002

ggs HEROS 36-92-005-318
gs CLOUGHHEAD LORD HCX95-142
ggd CLOUGHHEAD FAVOURITE HCXF-031-FOT

Dam - KYPE ANNA CAQ05-013

ggs RYEDAILE FORTUNE DACF-013-FOT
gd KYPE JASMINE CAQ94-001
ggd KYPE FLAKE CAQF-004

Signet Recorded Weights **100** **200** **300** **400** **500**
Last BLUP'd 10/03/2013 203 348 516

MLC	C E(%)	C V	200M(kg)	200G(kg)	400G(kg)	Fat(mm)	MD(mm)	BV
Data EBV	-3.0	LMOC	0	+28	+51	-0.4	+4.2	LM+33
Acc %	64		65	49	74	69	66	72
BLCS Index	97		97	104	110	112	119	115

Full brother sold for 3,500 gns.

67 Mr H Savage & Sons
TRUEMAN GENESIS **SLN11-017.** Born 15/12/11. UK 9240306/568-1. Got by AI.

ggs HARICOT 22-92-003-011
gs OCTOPUS 87-10-671-030
ggd JUSTINE 87-94-005-984

Sire - SYMPA 48-01-006-969

ggs GENIAL 87-91-002-491
gd OPERETTE 48-98-133-040
ggd LAVANDE 48-15-341-488

ggs WILODGE TONKA WEY02-002
gs WILODGE VANTASTIC WEY04-037
ggd RAVENELLE 23-51-224-583

Dam - TRUEMAN EVA SLN09-004

ggs RONICK HAWK DY92-026
gd TRUEMAN SONG SLN01-002
ggd BELLVIEW MYSTICAL WCT96-022

Trueman Genesis is a son of Trueman Eva. Eva's full sister Trueman Florence sold for 8,800gns at Red Ladies 2011. Genesis is a very stylish bull with a lot of muscle.

267 Mr & Mrs M & A McPolin
NEWHILLFARM GLEN MSC11-165. Born 19/12/11. UK 9422164/0416-2. Got by AI.
 Grade: 99%

Sire - ggs BAMBINO 19-86-005-742
 gs MAS DU CLO 23-96-032-213
 ggd COSETTE 23-87-051-003
TEHIX 12-02-088-259
 ggs ESPOIR 87-89-003-720
 gd LILAS 12-95-162-563
 ggd GITANE 12-91-112-247

Dam - ggs MAS DU CLO 23-96-032-213
 gs MILBROOK TANKO MILT-407
 ggd MILBROOK MONIQUE MILM-009-FOT
NEWHILLFARM DORA MSC08-092
 ggs SHIRE MILTON EL96-354-FOT
 gd NEWHILLFARM UPTOWNGIRL MSC03-035
 ggd HILLFARM MAYROSE HIL96-033G

Signet Recorded Weights **100** **200** **300** **400** **500**
 Last BLUP'd 10/03/2013 170 297 428 558

MLC	C E(%)	C V	200M(kg)	200G(kg)	400G(kg)	Fat(mm)	MD(mm)	BV
Data EBV	-4.7	LM-2C	-3	+29	+39	0	+4.8	LM+27
Acc %	59		67	54	73	74	54	67
BLCS Index	87		83	87	111	104	92	120
								107

Newhillfarm Glen is a well muscled bull. His pedigree includes TEHIX, MILBROOK TANKO and MAS DU CLO.

68 Mr RAG Savage
AGHADOLGAN GENERAL SLC11-035. Born 26/12/11. UK 9492481/321-6.

Sire - ggs SYMPA 48-01-006-969
 gs HALTCLIFFE UNDERWRITER RP03-003
 ggd RONICK RICOLE DY00-078
CRAIGATOKE BOMBER CDZ06-002
 ggs HALTCLIFFE HERCULES RP92-009
 gd CRAIGATOKE REDROSE CDZ00-017
 ggd CRAIGATOKE LIONA CDZ95-004

Dam - ggs CARSE IMPACT DDJ93-006
 gs WESTPIT NORDIC GAZ97-016
 ggd WESTPIT ISLA GAZ93-018
AGHADOLGAN SHOWGIRL SLC01-016
 ggs IRIS 19-93-013-037
 gd MIDDLEDALE MISTRESS BDD96-101
 ggd MIDDLEDALE ELSIE BDDE-013-FOT

CLASS EIGHT JUNIOR BULLS BORN 05/01/12 – 26/01/12

71 Mr G M McCague
BRIDGEVIEW HAWK **MQV12-003.** **Born 05/01/12.** **UK 9420414/779-1.** **Got by AI.**
 Embryo Calf Yes

ggs JANVIER 86-94-111-257
 gs OXYGENE 12-98-171-453
 ggd ISOCELE 12-93-112-437

Sire - WILODGE TONKA WEY02-002

ggs BRONTEMOOR ILKLEY PCI93-012
 gd WILODGE MECLAIRE WEY96-022
 ggd NEWSHAM ECLAIRE BAUE-025

ggs OMISB 86-98-111-644
 gs TATAR B 86-02-132-763
 ggd NUIT B 86-97-111-955

Dam - ARDLEA ASHLIN IE221064520531

ggs GWENOLE 87-91-050-505
 gd SIBYLLE 19-31-126-418
 ggd OASIS 19-98-001-963

Excellent bloodlines with Wilodge Tonka, Tatar B and Omis B in his pedigree. The French cow Sibylle is his Grand dam.

72 Mr M J Conway
CRAIGATOKE HECTOR **CDZ12-002.** **Born 05/01/12.** **UK 9650100/1195-5.** **Got by AI.**

ggs PETUNIA 87-00-670-240
 gs CLOUGHHEAD UMPIRE HCX03-221
 ggd GASCOGNE 23-91-060-414

Sire - PLUMTREE DEUS CQE08-003

ggs SYMPA 48-01-006-969
 gd BANKDALE AMBER WLJ05-095
 ggd PRINCESSE 87-08-920-187

ggs SYMPA 48-01-006-969
 gs HALTCLIFFE UNDERWRITER RP03-003
 ggd RONICK RICOLE DY00-078

Dam - CRAIGATOKE DIERDRIE CDZ08-017

ggs GOLDIES OSWALD GS98-064
 gd CRAIGATOKE ULTRABRIGHT CDZ03-005
 ggd CRAIGATOKE PRINCES CDZ99-012

73 Mr J I McGeehan
SLIEVE HENRIK MRC12-133. Born 06/01/12. UK 9581574/0729-3. Got by AI.

ggs JANVIER 86-94-111-257
gs OXYGENE 12-98-171-453
ggd ISOCELE 12-93-112-437

Sire - WILODGE TONKA WEY02-002

ggs BRONTEMOOR ILKLEY PCI93-012
gd WILODGE MECLAIRE WEY96-022
ggd NEWSHAM ECLAIRE BAUE-025

ggs FERRY 19-90-003-045
gs ARDBRACK SEEKINGTHEGOLD GAU01-193
ggd ARDBRACK JOLENE GAU94-036

Dam - WINDYHILL VIENNA BCK04-013

ggs REDSTONE LANCIA HID95-013
gd WINDYHILL SARA BCK01-005
ggd WINDYHILL NOLARA BCK97-001

Signet Recorded Weights **100** **200** **300** **400** **500**
Last BLUP'd 10/03/2013 160 294 426 558

MLC	C E(%)	C V	200M(kg)	200G(kg)	400G(kg)	Fat(mm)	MD(mm)	BV
Data EBV	-3.5	LM+1C	-3	+19	+35	-0.3	+2.1	LM+17
Acc %	61		66	55	73	68	54	66
BLCS Index	94		104	87	99	101	112	98

Dam Vienna is one of the best vows in the herd and has bred bulls to 7,500gns.

74 Mr M J Conway
CRAIGATOKE HAMLET CDZ12-008. Born 07/01/12. UK 9650100/1201-4. Got by AI.

ggs OXYGENE 12-98-171-453
gs WILODGE TONKA WEY02-002
ggd WILODGE MECLAIRE WEY96-022

Sire - WILODGE CERBERUS WEY07-010

ggs BROADMEADOWS CANNON CAVC-031
gd WILODGE PRICELESS WEY99-032
ggd WILODGE LITTLEDEM WEY95-027

ggs OLAF 19-30-358-309
gs HEATHMOUNT TALON MOF02-014
ggd GOLDIES OMBRE GS98-030

Dam - CRAIGATOKE VICTORIES CDZ04-023

ggs SHIRE HANDSOME EL92-183-FOT
gd CRAIGATOKE ODETTE CDZ98-014
ggd CRAIGATOKE JANET CDZ94-002

Messrs J & J Aiken
75 CARNEW HOTSHOT AEN12-002. Born 09/01/12. UK 9273139/0065-7. Got by AI.
 ggs PALAIS 19-79-000-224
 gs ALASKA 87-85-003-165
 ggd MARYLISE 87-76-008-601
Sire - LUDO 19-95-012-472
 ggs ORDINATEUR 87-78-014-297
 gd FANY 19-90-006-313
 ggd PACOTILLE 19-79-003-669
 ggs TITAN MEB-010T
 gs GREENSONS GIGOLO GATG-009
 ggd SURPRISE 87-81-006-951
Dam - CARNEW UPTOWNGIRL AEN03-002
 ggs LYNDERG IDEAL LDG93-001
 gd LYNDERG LUCILLE LDG95-020
 ggd LYNDERG DANIELLE LDGD-002

Signet Recorded Weights **100** **200** **300** **400** **500**
 Last BLUP'd 10/03/2013 447 583

MLC	C E(%)	C V	200M(kg)	200G(kg)	400G(kg)	Fat(mm)	MD(mm)	BV
Data EBV	-3.6	LM-3C	-4	+26	+39	+0.1	+3.6	LM+27
Acc %	60		67	47	56	54	49	55
BLCS Index	93		76	81	108	104	85	110

Mr J A Quail
76 LYNDERG HERCULES LDG12-005. Born 11/01/12. UK 9273052/184-2. Got by AI.
 ggs OCTOPUS 87-10-671-030
 gs SYMPA 48-01-006-969
 ggd OPERETTE 48-98-133-040
Sire - LYNDERG DIMITRI LDG08-014
 ggs HATARI 19-92-014-362
 gd ONDINE 19-98-001-300
 ggd GRAZIELLA 19-91-008-621
 ggs ALASKA 87-85-003-165
 gs LUDO 19-95-012-472
 ggd FANY 19-90-006-313
Dam - LYNDERG CAMELLIA LDG07-002
 ggs JOCKER 19-94-004-124
 gd SABINE 19-30-878-583
 ggd LUCARNE 19-95-005-238

77 Mr J A Quail
LYNDEG HARRIS **LDG12-007.** **Born 12/01/12.** **UK 9273052/185-3.** **Got by AI.**

ggs HARICOT 22-92-003-011
gs OCTOPUS 87-10-671-030
ggd JUSTINE 87-94-005-984

Sire - SYMPA 48-01-006-969

ggs GENIAL 87-91-002-491
gd OPERETTE 48-98-133-040
ggd LAVANDE 48-15-341-488

Dam - ONDINE 19-98-001-300

ggs URON 87-83-000-966
gs HATARI 19-92-014-362
ggd URSULE 19-83-003-960

ggs COUCOU 36-87-002-418
gd GRAZIELLA 19-91-008-621
ggd CHITA 19-87-001-506

Harris is a full brother to Lynderg Dimitri.

78 Mr M J Conway
CRAIGATOKE HIPPO **CDZ12-013.** **Born 14/01/12.** **UK 9650100/1207-3.** **Got by AI.**

ggs PETUNIA 87-00-670-240
gs CLOUGHHEAD UMPIRE HCX03-221
ggd GASCOGNE 23-91-060-414

Sire - PLUMTREE DEUS CQE08-003

ggs SYMPA 48-01-006-969
gd BANKDALE AMBER WLJ05-095
ggd PRINCESSE 87-08-920-187

Dam - CRAIGATOKE DODI CDZ08-006

ggs SYMPA 48-01-006-969
gs HALTCLIFFE UNDERWRITER RP03-003
ggd RONICK RICOLE DY00-078

ggs HEATHMOUNT TALON MOF02-014
gd CRAIGATOKE VEIL CDZ04-026
ggd CRAIGATOKE NICEGIRL CDZ97-005

79 Messrs . Matthews Brothers
BRIARFIELDS HENRY **MOE12-002.** **Born 25/01/12.** **UK 9100571/1641-6.**

ggs GENIAL 87-91-002-491
gs NECTAR 19-97-013-151
ggd FRINGANTE 19-90-002-509

Sire - RAHONEY BENJAMIN MDS06-004

ggs LIMO PEDRO GGG99-006
gd RAHONEY UBEKAH MDS03-015
ggd RAHONEY REBEKAH MDS00-012

Dam - BRIARFIELDS DAMSON MOE08-014

ggs HEATHMOUNT TALON MOF02-014
gs CRAIGATOKE VICTIM CDZ04-022
ggd CRAIGATOKE ORLA CDZ98-002

ggs BRIARFIELDS ROCKY MOE00-002
gd BRIARFIELDS TIARA MOE02-005
ggd NEWTOWNSAVILLE REARGUARD MKQ00-005

80 Mr RAG Savage
AGHADOLGAN HENRY SLC12-002. **Born 26/01/12.** **UK 9492481/323-1.** **Got by AI.**

ggs MALIBU 36-96-026-196
gs PETUNIA 87-00-670-240
ggd GATINE 87-91-002-851

Sire - CLOUGHHEAD UMPIRE HCX03-221
ggs ESPAGNOL 23-89-055-553
gd GASCOGNE 23-91-060-414
ggd BAVETTE 23-86-005-590

ggs OCTOPUS 87-10-671-030
gs SYMPA 48-01-006-969
ggd OPERETTE 48-98-133-040

Dam - AGHADOLGAN ESMERELDA SLC09-021
ggs SEAVIEW UPSTART MMV03-033
gd BRONTEMOOR BOBBYDAZZLER PCI06-049
ggd BRONTEMOOR LISA PCI95-021

280 Mr & Mrs M & A McPolin
NEWHILLFARM HENRY MSC12-009. **Born 30/01/12.** **UK 9422164/0435-7.** **Got by AI.**
Grade: 99%

ggs ROMEO 87-80-005-214
gs DAUPHIN 19-88-004-715
ggd OMBRETTE 19-78-003-500

Sire - CARMORN DAUPHIN MCN08-010
ggs PELLETSTOWN KEN PELK-121
gd CARMORN PENNY MCN99-025
ggd CARMORN HELEN MCN92-002

ggs INDECIS 22-93-004-195
gs ONDIT 36-15-069-746
ggd FRANCHON 36-90-006-248

Dam - NEWHILLFARM DANI MSC08-088
ggs GREENSONS GIGOLO GATG-009
gd NEWHILLFARM UTHA MSC03-025
ggd NEWHILLFARM ROBIN MSC00-005

Signet Recorded Weights **100** **200** **300** **400** **500**
Last BLUP'd 10/03/2013 199 358 523

MLC	C E(%)	C V	200M(kg)	200G(kg)	400G(kg)	Fat(mm)	MD(mm)	BV
Data EBV	-3.1	LM+1C	+3	+37	+67	-0.1	+4.0	LM+36
Acc %	54		66	44	72	68	51	65
BLCS Index	97		104	122	121	123	99	114

Newhillfarm Henry has excellent milk, growth, beef valve, and maternal production value figures making him an excellent all round bull. His pedigree includes CARMORN DAUPHIN and ONDIT.

CLASS NINE JUNIOR BULLS BORN 02/02/12 – 03/03/12

81 Mr M Loughran
MILLGATE HUGH LFR12-002. Born 02/02/12. UK 9630001/2407-5. Got by AI.

ggs WILODGE TONKA WEY02-002
gs WILODGE VANTASTIC WEY04-037
ggd RAVENELLE 23-51-224-583

Sire - CARMORN COPILOT MCN07-038

ggs PELLETSTOWN KEN PELK-121
gd CARMORN PENNY MCN99-025
ggd CARMORN HELEN MCN92-002

ggs ALMSCLIFFE ALEXANDER MBSA-004
gs FEDNEYHOUSE LAIRD ACU95-003
ggd DIAMOND FAIRYPRINCESS MFHF-007

Dam - MILLGATE TERESA LFR02-012

ggs LINEVIEW LAR CDT95-024
gd LINEVIEW PAULA CDT99-022
ggd LINEVIEW MOLLY CDT96-025

Signet Recorded Weights **100** **200** **300** **400** **500**
Last BLUP'd 10/03/2013 201 355 502 652

MLC	C E(%)	C V	200M(kg)	200G(kg)	400G(kg)	Fat(mm)	MD(mm)	BV
Data EBV	-7.1	LM-4C	-1	+38	+68	-0.4	+4.4	LM+37
Acc %	64	71	51	76	75	68	74	76
BLCS Index	71	71	99	122	124	119	117	124

Millgate Hugh is a growth bull with a beef value of LM+37. Hugh has settled a cow in calf.

82 Mr J.R. Paynter
DRUMILLY HOLBY PIL12-001. Born 02/02/12. UK 9185331/0064-6. Got by AI.
Embryo Calf Yes

ggs HARICOT 22-92-003-011
gs OCTOPUS 87-10-671-030
ggd JUSTINE 87-94-005-984

Sire - SYMPA 48-01-006-969

ggs GENIAL 87-91-002-491
gd OPERETTE 48-98-133-040
ggd LAVANDE 48-15-341-488

ggs OMAR 19-30-288-541
gs SILEX 36-15-082-255
ggd ORBITE 36-15-139-945

Dam - SARKLEY DUMERALDA PBO08-038

ggs HARTSIDE HENSINGHAM TW92-545
gd SARKLEY UMERALDA PBO03-108
ggd SARKLEY ESMERALDA PBOE-002

83 Mr M R G Watson
HILLHEAD HERCULES WAN12-003. **Born 03/02/12.** **UK 9331319/539-3.** **Got by AI.**

ggs DAUPHIN 19-88-004-715
gs JACOT 36-94-005-555
ggd VIOLETTE 36-84-701-052

Sire - ROCKY 36-15-030-964

ggs ELDORADO 36-89-000-419
gd GLOIRE 36-91-002-380
ggd BANANE 36-86-886-661

ggs DYFRI GRANDPRIX EACG-021
gs HILLHEAD NAPOLEON WAN97-001
ggd HILLHEAD CAROLINE WANC-002

Dam - HILLHEAD ULRIKE WAN03-007

ggs DALI 36-88-006-130
gd HILLHEAD HELENA WAN92-004
ggd HILLHEAD CHRISTINE WANC-001

84 Messrs J Ferguson & Sons
OLDEHOUSE HANNIBAL FFD12-002. **Born 12/02/12.** **UK 9330913/739-7.** **Got by AI.**
Embryo Calf Yes

ggs LAIRD 16-75-110-234
gs TALENT 23-82-004-036
ggd PRINCESSE 87-79-006-965

Sire - RONICK GAINS DYG-010

ggs TANHILL RUMPUS FBR-092
gd BROADMEADOWS AINSI CAVA-003
ggd BROADMEADOWS TANSY CAVT-002

ggs SARKLEY THUNDERBOLT PBO02-267
gs REDDINGS ALFIE WFO05-010
ggd REDDINGS PEPSI WFO99-006

Dam - OLDEHOUSE DORA FFD08-003

ggs RONICK OKLAHOMA DY98-384
gd RAHONEY UNETTE MDS03-020
ggd RAHONEY ISLA MDS93-004

Bred to Breed

85 Mr J McClintock
REIDSTOWN HANDYANDY MVL12-116. **Born 14/02/12.** **UK 9123715/1311-6.** **Got by AI.**
Twin to a male

ggs DAUPHIN 19-88-004-715
gs JACOT 36-94-005-555
ggd VIOLETTE 36-84-701-052

Sire - ROCKY 36-15-030-964

ggs ELDORADO 36-89-000-419
gd GLOIRE 36-91-002-380
ggd BANANE 36-86-886-661

ggs VILLY 19-84-008-766
gs HIGHLANDER 16-92-111-209
ggd BARONNE 16-86-111-362

Dam - CARRICKALDREEN VIOLET MLD04-003

ggs HARTSIDE JACKO TW94-756
gd CARRICKALDREEN REBECCA MLD00-005
ggd CARRICKALDREEN JULIE MLD94-001

86 Mr J McClintock
REIDSTOWN HIGHLANDER MVL12-127. **Born 14/02/12.** **UK 9123715/1312-7.** **Got by AI.**
 Twin to a male

ggs DAUPHIN 19-88-004-715
 gs JACOT 36-94-005-555
 ggd VIOLETTE 36-84-701-052

Sire - ROCKY 36-15-030-964

ggs ELDORADO 36-89-000-419
 gd GLOIRE 36-91-002-380
 ggd BANANE 36-86-886-661

ggs VILLY 19-84-008-766
 gs HIGHLANDER 16-92-111-209
 ggd BARONNE 16-86-111-362

Dam - CARRICKALDREEN VIOLET MLD04-003

ggs HARTSIDE JACKO TW94-756
 gd CARRICKALDREEN REBECCA MLD00-005
 ggd CARRICKALDREEN JULIE MLD94-001

87 Mr H Savage & Sons
TRUEMAN HANDEL SLN12-008. **Born 15/02/12.** **UK 9240306/576-2.** **Got by AI.**

ggs FAVORI 87-70-001-552
 gs BROADMEADOWS VIP CAVV-024-FOT
 ggd HAMPTON NADINE JBN-015

Sire - BROADMEADOWS CANNON CAVC-031

ggs TANHILL RUMPUS FBR-092
 gd BROADMEADOWS AINSI CAVA-003
 ggd BROADMEADOWS TANSY CAVT-002

ggs NENUPHAR 87-97-011-143
 gs BREMORE VOLVO IE171088810080
 ggd BREMORE SHOWGIRL IE1000570136

Dam - ELITE CAPPY IE221062770595

ggs DAUPHIN 19-88-004-715
 gd NINA BRNN-013
 ggd BARNATTIN ICIAN BRNI-004

Trueman Handel is a son of the legendary Broadmeadows Cannon. He is a son of Elite Cappy who was all Ireland Intermediate Heifer Champion in Tullamore. He has great growth potential as well as tremendous length. He comes from a very easy calving strain.

88 Messrs J & J Aiken
CARNEW HERCULES AEN12-004. **Born 25/02/12.** **UK 9273139/0067-2.** **Got by AI.**

ggs RONICK HAWK DY92-026
 gs PENYRHEOL SAM PCU01-216
 ggd PENYRHEOL OPHELIA PCU98-203

Sire - HALTCLIFFE VERMONT RP04-042

ggs LUDO 19-95-012-472
 gd RENONCULE 19-30-708-827
 ggd LOTTE 19-95-016-975

ggs HEROS 36-92-005-318
 gs CLOUGHHEAD LORD HCX95-142
 ggd CLOUGHHEAD FAVOURITE HCXF-031-FOT

Dam - CARNEW BEYONCE AEN06-005

ggs REDPATHS JAGUAR REY94-001
 gd SWEETWALL REDLADY MEK00-008
 ggd SWEETWALL FANCIFUL MEKF-001

CLASS TEN - FEMALE

091	Mr H Savage & Sons ANAIS	19-31-999-875.	Born 22/01/05.	
	Bourbouloux, Le Pont, 19140 Saint Ybard, France,			
				ggs MICMAC 87-96-005-024
				gs PARADIS 22-55-671-789
				ggd FABULEUSE 22-90-009-934
Sire -	TALONIER 16-27-496-783			ggs HEROS 87-92-002-724
				gd MUSCADINE 16-96-125-270
				ggd FANTINE 16-90-110-936
				ggs HEMISPHERE 87-92-004-301
				gs LUTTEUR 24-95-019-271
				ggd ADELE 24-85-015-223
Dam -	ORANGE 19-30-098-228			ggs FAIGNANT 87-90-002-131
				gd LISE 19-95-016-878
				ggd UNA 19-83-001-483
Calving Record	1	07/07/2007	F	
	2	13/11/2008	F	
	3	17/10/2009	M	

Anais is a French cown. Her mother "Orange" was Paris Champion in 2003. A full brother of Anais sold for 10,800 gns is 2012. Anais is a huge cow with great breeding ability. She is due to calve before the end of March to Trueman Also who is a half brother to Trueman Euphonium – 40th Anniversary National Limousin Champion.

CLASS ELEVEN - FEMALES

092	Mr R Crawford ERNE GORGEOUS	CFC11-048.	Born 05/04/11.	UK 9484139/0637-1. Got by AI.
				ggs EUROPEEN 22-89-014-048
				gs JORDY 22-94-004-711
				ggd FLAMANDE 22-90-037-989
Sire -	OMISB 86-98-111-644			ggs FARFELU 35-90-041-262
				gd JULIETTE 61-94-000-398
				ggd CALINE 61-87-004-589
				ggs JERSEY 36-94-000-548
				gs PICADOR 23-00-545-155
				ggd INGRID 23-93-048-957
Dam -	TOUR 23-03-203-241			ggs IDEAL 19-93-013-281
				gd ORANGE 23-99-057-921
				ggd GALAXIE 23-91-059-892

Signet Recorded Weights	100	200	300	400	500
Last BLUP'd 10/03/2013			543	695	

MLC	C E(%)	C V	200M(kg)	200G(kg)	400G(kg)	Fat(mm)	MD(mm)	BV
Data EBV	-7.0	LM-3C	+2	+26	+44	+0.1	+2.9	LM+25
Acc %	56		68	43	71	73	65	69
BLCS Index	72		81	116	108	107	85	104

093 Messrs . McKinney Brothers
HEATHMOUNT GATEAUX MOF11-019. **Born 05/06/11.** **UK 9564413/0432-5.**

ggs NESTOR 19-97-007-920
gs SALOMON 19-30-888-596
ggd NINA 19-96-004-395

Sire - BAILEA ANDRE JAG05-032
ggs GREENSONS GIGOLO GATG-009
gd BAILEA IZBICKI JAG93-033
ggd BAILEA FANCY JAGF-002

ggs MARQUIS 19-96-000-831
gs SAINFOIN 19-30-998-361
ggd HYACINTHE 19-92-015-046

Dam - HEATHMOUNT UNLIMITED MOF03-019
ggs STAVELEY INTERNATIONAL BIW93-017-FOT
gd STAVELEY LILAC BIW95-011
ggd HALTCLIFFE DAZZLER RPD-029

Signet Recorded Weights **100** **200** **300** **400** **500**
Last BLUP'd 10/03/2013 158 270 392 538

MLC	C E(%)	C V	200M(kg)	200G(kg)	400G(kg)	Fat(mm)	MD(mm)	BV
Data EBV	-1.2	LM+1C	0	+15	+23	0	+2.5	LM+20
Acc %	61	61	48	73	74	46	65	72
BLCS Index	109	103	104	95	92	92	101	96

094 Messrs . McKinney Brothers
HEATHMOUNT GENESIS MOF11-023. **Born 10/06/11.** **UK 9564413/0437-3.**

ggs NESTOR 19-97-007-920
gs SALOMON 19-30-888-596
ggd NINA 19-96-004-395

Sire - BAILEA ANDRE JAG05-032
ggs GREENSONS GIGOLO GATG-009
gd BAILEA IZBICKI JAG93-033
ggd BAILEA FANCY JAGF-002

ggs JABOT 19-93-015-958
gs MALIBU 36-96-026-196
ggd HAITI 36-92-005-630

Dam - HEATHMOUNT UNETTE MOF03-032
ggs FILIP 02-90-150-010
gd NORMANDE MAVOURNEEN CAX96-031
ggd NORMANDE FERMANAGH CAXF-002

Signet Recorded Weights **100** **200** **300** **400** **500**
Last BLUP'd 10/03/2013 164 270 383 526

MLC	C E(%)	C V	200M(kg)	200G(kg)	400G(kg)	Fat(mm)	MD(mm)	BV
Data EBV	-1.1	LM+1C	+1	+18	+35	-0.1	+2.6	LM+23
Acc %	63	69	51	74	75	51	66	74
BLCS Index	109	105	110	98	101	99	102	101

Mr H P Hamill
095 BALLYKELLY GIGI HIP11-118. Born 20/06/11. UK 9040119/0663-1. Got by AI.

ggs TALENT 23-82-004-036
 gs RONICK GAINS DYG-010
 ggd BROADMEADOWS AINSI CAVA-003

Sire - SHIRE MILTON EL96-354-FOT

ggs VAGABOND 87-84-000-053
 gd CROWNHEAD COLOMBE BBAC-051
 ggd BEDELL PENNY BNP-044X

ggs SYMPA 48-01-006-969
 gs BALLYKELLY BART HIP06-053
 ggd BALLYKELLY PRIMROSE HIP99-007

Dam - BALLYKELLY DOLLY HIP08-079

ggs SHIRE HANDSOME EL92-183-FOT
 gd RAHONEY OLVA MDS98-015
 ggd RAHONEY LINDA MDS95-006

Signet Recorded Weights **100** **200** **300** **400** **500**
 Last BLUP'd 10/03/2013 142 219 304 374 442

MLC	C E(%)	C V	200M(kg)	200G(kg)	400G(kg)	Fat(mm)	MD(mm)	BV
Data EBV	-4.2	LM-3C	+3	+13	+29	-0.1	+3.9	LM+28
Acc %	65		70	59	75	69	75	76
BLCS Index	90		76	122	92	99	113	110

Strong heifer. Grand-dam bred bulls to £4000. Dam line to Rahoney Linda with bulls to £14000.

Mr H P Hamill
096 BALLYKELLY GUINEVERE HIP11-120. Born 18/07/11. UK 9040119/0665-3. Got by AI.

ggs TALENT 23-82-004-036
 gs RONICK GAINS DYG-010
 ggd BROADMEADOWS AINSI CAVA-003

Sire - SHIRE MILTON EL96-354-FOT

ggs VAGABOND 87-84-000-053
 gd CROWNHEAD COLOMBE BBAC-051
 ggd BEDELL PENNY BNP-044X

ggs PICARO 87-79-008-311
 gs TANGO 87-82-006-448
 ggd GAMBETTE 87-71-000-392

Dam - BALLYKELLY EVE HIP09-093

ggs DUC 87-88-000-425
 gd BALLYKELLY OLIVE HIP98-006
 ggd ARDIGON FAIENCE ADGF-009

Signet Recorded Weights **100** **200** **300** **400** **500**
 Last BLUP'd 10/03/2013 130 211 288 364 431

MLC	C E(%)	C V	200M(kg)	200G(kg)	400G(kg)	Fat(mm)	MD(mm)	BV
Data EBV	-0.6	LMOC	+1	+5	+20	-0.2	+2.1	LM+23
Acc %	65		70	59	75	69	75	76
BLCS Index	112		99	110	83	105	98	102

Shire Milton, Tango and Duc in sire stack. Grand dam bred Castlewella Senior Bull 1st prize 2010

097 Mr W Campbell
SPAGE GOLDIE **CFS11-011.** **Born 25/08/11.** **UK 9102633/0417-2.**
 ggs BAMBINO 19-86-005-742
 gs MAS DU CLO 23-96-032-213
 ggd COSETTE 23-87-051-003
Sire - KILLMACTRANSA DENMAN IE261094780178
 ggs GENEREUX 19-91-009-241
 gd PELLETSTOWN PIANO IE281523420294
 ggd MIMOSA PELM-153-FOT
 ggs FESTIN 87-90-005-718
 gs MILBROOK R2K MILR-230
 ggd MILBROOK MONIQUE MILM-009-FOT
Dam - SPAGE BAMBI CFS06-005
 ggs GOLDIES MAGICIAN GS96-108
 gd SHILNAVOGIE RUTH DGA00-002
 ggd SHILNAVOGIE NICOLA DGA97-006

CLASS TWELVE FEMALES

098 Mr J N McGarrigle
MONEYKEE GRAINNE **MRL11-009.** **Born 01/10/11.** **UK 9470109/0467-5.** **Got by AI.**
 ggs OCTOPUS 87-10-671-030
 gs SYMPA 48-01-006-969
 ggd OPERETTE 48-98-133-040
Sire - HALTCLIFFE UNDERWRITER RP03-003
 ggs BROADMEADOWS CANNON CAVC-031
 gd RONICK RICOLE DY00-078
 ggd RONICK NICOLE DY97-079
 ggs LEO 23-95-071-399
 gs NENUPHAR 87-97-011-143
 ggd GIROFLEE 87-91-000-077
Dam - MONEYKEE CLAIRE MRL07-004
 ggs RONICK HAWK DY92-026
 gd MONEYKEE THELMA MRL02-008
 ggd DERRYLOUGH REDLADY SEX00-001

Excellent bloodlines – Sympa, Cannon, Nenuphar & Ronick Hawk

099 Mr C H Murray
ANNADALE GELLA **MUX11-012.** **Born 19/10/11.** **UK 9244515/123-5.** **Got by AI.**
 ggs MALIBU 36-96-026-196
 gs PETUNIA 87-00-670-240
 ggd GATINE 87-91-002-851
Sire - CLOUGHHEAD UMPIRE HCX03-221
 ggs ESPAGNOL 23-89-055-553
 gd GASCOGNE 23-91-060-414
 ggd BAVETTE 23-86-005-590
 ggs TITAN MEB-010T
 gs GREENSONS GIGOLO GATG-009
 ggd SURPRISE 87-81-006-951
Dam - ANNADALE ANNABELL MUX05-008
 ggs FERRY 19-90-003-045
 gd BALLYMONEY TILLY BLMT-121
 ggd MISTRALE BLMM-011

From an excellent dam line. Related to Reserve Female Champion in Dungannon February 2013.

100 Mr H P Hamill
BALLYKELLY GEM **HIP11-122.** **Born 04/11/11.** **UK 9040119/0669-7.** **Got by AI.**
 ggs BAMBINO 19-86-005-742
 gs MAS DU CLO 23-96-032-213
 ggd COSETTE 23-87-051-003
Sire - TEHIX 12-02-088-259
 ggs ESPOIR 87-89-003-720
 gd LILAS 12-95-162-563
 ggd GITANE 12-91-112-247
 ggs OCTOPUS 87-10-671-030
 gs SYMPA 48-01-006-969
 ggd OPERETTE 48-98-133-040
Dam - BALLYKELLY BONNY HIP06-060
 ggs SHIRE MILTON EL96-354-FOT
 gd BALLYKELLY SARAH HIP01-016
 ggd SWEETWALL PERFECT MEK99-001

Signet Recorded Weights	100	200	300	400	500
Last BLUP'd 10/03/2013	163	260	355	432	

MLC	C E(%)	C V	200M(kg)	200G(kg)	400G(kg)	Fat(mm)	MD(mm)	BV
Data EBV	-3.1	LM-1C	-3	+24	+37	-0.3	+2.7	LM+22
Acc %	65		71	55	75	71	58	70
BLCS Index	97		95	87	105	102	112	103
								100

Show heifer. Full brother sold @ £2940 Ballymena 2012. Two sisters retained and breeding well.

101 Mr K C Veitch
ALBIAN GIGI **VJ11-145.** **Born 06/12/11.** **UK 9480043/5314-5.** **Got by AI.**
 ggs OXYGENE 12-98-171-453
 gs WILODGE TONKA WEY02-002
 ggd WILODGE MECLAIRE WEY96-022
Sire - WILODGE CERBERUS WEY07-010
 ggs BROADMEADOWS CANNON CAVC-031
 gd WILODGE PRICELESS WEY99-032
 ggd WILODGE LITTLEDEM WEY95-027
 ggs GABARIT 72-91-110-535
 gs GRANGE NAVAJO SAD97-126
 ggd GRANGE INDIENNE SAD93-769
Dam - BALLYRICKARD RACHEL DBA00-001
 ggs WILKESLEY SAMSON WBS-005
 gd BALLYRICKARD FLO DBAF-002
 ggd BALLYRICKARD DAISY DBAD-001

102 Mr H P Hamill
BALLYKELLY HELM **HIP12-124.** **Born 01/02/12.** **UK 9040119/0671-2.** **Got by AI.**
 ggs VAGABOND 87-84-014-835
 gs EPSON 87-89-003-682
 ggd TECHNIQUE 87-82-002-576
Sire - TASTEVIN 33-30-021-849
 ggs HIGHLANDER 16-92-111-209
 gd PAILLETTE 33-30-003-088
 ggd IAMBIQUE 33-93-015-768
 ggs MAS DU CLO 23-96-032-213
 gs ULM 12-04-085-223
 ggd NIVELLE 12-98-162-623
Dam - BALLYKELLY ELM HIP09-096
 ggs SHIRE MILTON EL96-354-FOT
 gd BALLYKELLY VELVET HIP04-040
 ggd HOLLYBANK SARAH SGT01-004

Signet Recorded Weights **100** **200** **300** **400** **500**
 Last BLUP'd 10/03/2013 145 248 329

MLC	C E(%)	C V	200M(kg)	200G(kg)	400G(kg)	Fat(mm)	MD(mm)	BV
Data EBV	-3.4	LM-2C	+1	+33	+62	0	+4.7	LM+38
Acc %	58		67	40	71	66	47	65
BLCS Index	95		88	110	116	120	92	119

Sire stack of best bulls in breed for maternal traits. Dam line goes back to Hollybank Lottie, Grand-dam of Trueman Euphonium.

Mr B. McAuley
103 LARKHILL HENRIETTA MMU12-002. Born 04/02/12. UK 9063020/0293-4. Got by AI.
 ggs JACOT 36-94-005-555
 gs ROSSIGNOL 36-15-030-976
 ggd LOGETTE 36-95-007-270
Sire - HALTCLIFFE DOCTOR RP08-788
 ggs SYMPA 48-01-006-969
 gd HALTCLIFFE USABELLE RP03-012
 ggd ROMANCE 87-00-840-357
 ggs GOURMAND 19-91-003-932
 gs JOCKEY 19-94-006-256
 ggd COQUINE 19-87-003-797
Dam - LARKHILL UNETTE MMU03-012
 ggs PELLETSTOWN KEN PELK-121
 gd LARKHILL PRINCESS MMU99-001
 ggd CARMORN MAY MCN96-006

Signet Recorded Weights **100** **200** **300** **400** **500**
 Last BLUP'd 10/03/2013 156 288 377

MLC	C E(%)	C V	200M(kg)	200G(kg)	400G(kg)	Fat(mm)	MD(mm)	BV
Data EBV	-4.1	LM-1C	-2	+36	+64	-0.1	+3.9	LM+35
Acc %	62		69	48	73	69	51	67
BLCS Index	90		90	93	120	121	99	113

Mr J N McGarrigle
104 MONEYKEE HANNAH MRL12-003. Born 22/02/12. UK 9470109/0476-7. Got by AI.
 ggs TUNNELBY MONKEYTRICKS TAP96-001
 gs GUNNERFLEET PLUNAS HDR99-010
 ggd GUNNERFLEET LUNA HDR95-003-FOT
Sire - FIELDSON ALFY FCE05-384
 ggs BROADMEADOWS CANNON CAVC-031
 gd EDEN NATASHA HCS97-074
 ggd BIRTLES DAISY NLD-029
 ggs LEO 23-95-071-399
 gs NENUPHAR 87-97-011-143
 ggd GIROFLEE 87-91-000-077
Dam - MONEYKEE VALERIE MRL04-006
 ggs TANHILL RUMPUS FBR-092
 gd ALBIAN OVETTE VJ98-003
 ggd MERESIDE FLAME HCGF-190

Super pedigree – Fieldson Alfy/Nenuphar bloodlines.

105 Mr R Crawford
ERNE HEATHER **CFC12-086.** **Born 25/02/12.** **UK 9484139/0748-7.** **Got by AI.**

ggs GALOPIN 87-91-050-832
gs MEXICAIN 87-96-005-520
ggd ALLUMETTE 87-85-003-591

Sire - SAUVIGNON 23-02-858-738

ggs TARVIS 19-82-001-611
gd MANON 23-96-034-294
ggd ETINCELLE 23-89-665-402

ggs ROMEO 87-80-005-214
gs DAUPHIN 19-88-004-715
ggd OMBRETTE 19-78-003-500

Dam - KEATINGSTOWN SUPER IE211405170199

ggs VOLCAN 19-84-004-136
gd KEATINGSTOWN ISOBELLE KCSI-007
ggd KEATINGSTOWN GERTIE KGSG-002

106 Mr & Mrs P Jordan
DRUMBEE HOLLY **JIG11-003.** **Born 29/02/12.** **UK 9182195/0123-2.** **Got by AI.**

ggs OXYGENE 12-98-171-453
gs WILODGE TONKA WEY02-002
ggd WILODGE MECLAIRE WEY96-022

Sire - WILODGE CERBERUS WEY07-010

ggs BROADMEADOWS CANNON CAVC-031
gd WILODGE PRICELESS WEY99-032
ggd WILODGE LITTLEDEM WEY95-027

ggs NEPTUNE 87-97-002-840
gs ARITABEN 36-15-036-528
ggd RITA 36-15-080-859

Dam - BALLINAHINCH ELLA IE381127030331

ggs ARDNACRUSHA PHILIP IE131668090143
gd BALLYNAHINCH AMBER IE381127060210
ggd KILDERMOT RITA IE371433040120

Holly has strength and power and should make a super cow. Very quiet heifer.

CLASS THIRTEEN FEMALES

107 Mr C H Murray
ANNADALE HOLLY MUX12-004. **Born 14/03/12.** **UK 9244515/0127-2.** **Got by AI.**

ggs GLENROCK SPARTACUS IE01-152
gs GLENROCK VENTURA IE04-432
ggd GLENROCK SASPIRILLA IE01-148

Sire - AMPERTAINÉ COMMANDER MGD07-046

ggs SYMPA 48-01-006-969
gd AMPERTAINÉ ANNABELLA MGD05-015
ggd KYPE SHARON CAQ01-041

ggs LINO 87-95-004-426
gs PACHA 19-30-318-295
ggd INGENUE 19-93-013-454

Dam - ANNADALE DOLLY MUX08-004

ggs GREENSONS GIGOLO GATG-009
gd ANNADALE ANNABELL MUX05-008
ggd BALLYMONEY TILLY BLMT-121

From an excellent dam line. Related to Reserve Female Champion in Dungannon February 2013

108 Mr B T Hall
BALLYHONÉ HARMONY HNL12-002. **Born 18/03/12.** **UK 9020492/869-1.**

ggs PENYRHEOL SAM PCU01-216
gs HALTCLIFFE VERMOUNT RP04-042
ggd RENONCULE 19-30-708-827

Sire - CARMORN EMPIRE MCN09-040

ggs PELLETSTOWN KEN PELK-121
gd CARMORN PENNY MCN99-025
ggd CARMORN HELEN MCN92-002

ggs INSECTE 19-93-002-022
gs OTAN 19-98-000-189
ggd JADE 19-94-002-527

Dam - TYRONE EDWINA WKX09-004

ggs IONESCO 36-93-000-206
gd SUCETTE 19-31-268-663
ggd JALOUSIE 87-94-001-541

Mr RAG Savage
109 AGHADOLGAN HAZZIE SLC12-007. Born 01/04/12. UK 9492481/328-6.
 ggs SYMPA 48-01-006-969
 gs HALTCLIFFE UNDERWRITER RP03-003
 ggd RONICK RICOLE DY00-078
Sire - CRAIGATOKE BOMBER CDZ06-002
 ggs HALTCLIFFE HERCULES RP92-009
 gd CRAIGATOKE REDROSE CDZ00-017
 ggd CRAIGATOKE LIONA CDZ95-004
 ggs BROADMEADOWS CANNON CAVC-031
 gs SARKLEY SEBASTIAN PBO01-135
 ggd SARKLEY MARIANNE PBO96-029
Dam - AGHADOLGAN VAZZIE SLC04-013
 ggs DYFRI GRANDPRIX EACG-021
 gd LUMBYLAW JAZZY OA94-052
 ggd LUMBYLAW BRICABRAC OAB-185

Barney O'Kane & Sons
110 KEADYVIEW HOTPANTS OCO12-001. Born 02/04/12. UK 9491318/1710-5. Got by AI.
 ggs OCTOPUS 87-10-671-030
 gs SYMPA 48-01-006-969
 ggd OPERETTE 48-98-133-040
Sire - AMPERTAINÉ ABRACADABRA MGD05-014
 ggs STOCKDALES MUSCULAR SDC96-012
 gd AMPERTAINÉ PENNY MGD99-001
 ggd AMPERTAINÉ HANNAH MGD92-003
 ggs RODEO 23-51-224-606
 gs GRAHAMS BADGER GV06-388
 ggd GRAHAMS UPPERCLASS GV03-183
Dam - CARMORN DEBBIE MCN08-052
 ggs PELLETSTOWN KEN PELK-121
 gd CARMORN ORCHARD MCN98-006
 ggd SOFTLAW IRENE RAC93-192

Signet Recorded Weights **100** **200** **300** **400** **500**
 Last BLUP'd 10/03/2013 146 256 367

MLC	C E(%)	C V	200M(kg)	200G(kg)	400G(kg)	Fat(mm)	MD(mm)	BV
Data EBV	-0.3	LM+1C	-1	+14	+25	-0.4	+2.4	LM+20
Acc %	58		65	50	71	67	54	65
BLCS Index	114		107	99	94	94	119	100
								96

111 Mark D Armstrong
SESKINGROVE HANNAH AGU12-005. **Born 06/04/12.** **UK 9100196/1485-2.**

ggs GENIAL 87-91-002-491
gs NECTAR 19-97-013-151
ggd FRINGANTE 19-90-002-509

Sire - SEAVIEW CAPTAIN MMV07-017

ggs UPLANDS BATMAN HLB-367
gd SEAVIEW ODETTA MMV98-006
ggd UPPERMILL BABETTE AAFB-003-FOT

ggs BROADMEADOWS CANNON CAVC-031
gs RONICK HAWK DY92-026
ggd RONICK ESTHER DYE-040

Dam - RAHONEY EUNICE MDS09-009

ggs SHIRE HANDSOME EL92-183-FOT
gd RAHONEY MARTHA MDS96-003
ggd RAHONEY FAITH MDSF-003

112 Mr W McAllister
ARTNAGULLION HELENA MRO12-003. **Born 14/04/12.** **UK 9062916/0445-6.** **Got by AI.**

ggs FERRY 19-90-003-045
gs ELITE POPSI TOLP-010-FOT
ggd BALLYNERRIN MAUD BNIM-002

Sire - VIRGINIA ANDY IE121657690563

ggs CARWIN FLOW CARF-006
gd MARLHILL NAOMI MAHN-004
ggd MARLHILL ELMA MAHE-002

ggs WILODGE TONKA WEY02-002
gs WILODGE VANTASTIC WEY04-037
ggd RAVENELLE 23-51-224-583

Dam - TEESHAN EVA RGP09-003

ggs RONICK HAWK DY92-026
gd TEESHAN VANOUSH RGP04-002
ggd TEESHAN SHANTOUSH RGP01-002

113 Mr C H Murray
TITCHBURN HELEN QBB12-003. **Born 19/04/12.** **UK 9244614/33-3.** **Got by AI.**
Embryo Calf Yes Twin to a female
Donal Murray, 12 Ballinarea Road, Cullyhanna, Newry, Co Down, BT35 0LB

ggs OXYGENE 12-98-171-453
gs WILODGE TONKA WEY02-002
ggd WILODGE MECLAIRE WEY96-022

Sire - WILODGE CERBERUS WEY07-010

ggs BROADMEADOWS CANNON CAVC-031
gd WILODGE PRICELESS WEY99-032
ggd WILODGE LITTLELEM WEY95-027

ggs BAMBINO 19-86-005-742
gs MAS DU CLO 23-96-032-213
ggd COSETTE 23-87-051-003

Dam - BARNATTIN VERA IE261003290128

ggs DAUPHIN 19-88-004-715
gd NINA BRNN-013
ggd BARNATTIN ICIAN BRNI-004

From an excellent dam line with all females retained. First females sold.

114 Mr C H Murray
TITCHBURN HELINA **QBB12-004.** **Born 19/04/12.** **UK 9244614/32-2.** **Got by AI.**
Embryo Calf Yes Twin to a female
Donal Murray, 12 Ballinarea Road, Cullyhanna, Newry, Co Down, BT35 0LB

ggs OXYGENE 12-98-171-453
gs WILODGE TONKA WEY02-002
ggd WILODGE MECLAIRE WEY96-022
Sire - WILODGE CERBERUS WEY07-010
ggs BROADMEADOWS CANNON CAVC-031
gd WILODGE PRICELESS WEY99-032
ggd WILODGE LITTLEDEM WEY95-027
ggs BAMBINO 19-86-005-742
gs MAS DU CLO 23-96-032-213
ggd COSETTE 23-87-051-003
Dam - BARNATTIN VERA IE261003290128
ggs DAUPHIN 19-88-004-715
gd NINA BRNN-013
ggd BARNATTIN ICIAN BRNI-004

From an excellent dam line with all females retained. First females sold.

115 Mr C H Murray
ANNADALE HOPE **MUX12-006.** **Born 27/04/12.** **UK 9244515/129-4.** **Got by AI.**

ggs PETUNIA 87-00-670-240
gs CLOUGHHEAD UMPIRE HCX03-221
ggd GASCOGNE 23-91-060-414
Sire - PLUMTREE DEUS CQE08-003
ggs SYMPA 48-01-006-969
gd BANKDALE AMBER WLJ05-095
ggd PRINCESSE 87-08-920-187
ggs LEO 23-95-071-399
gs NENUPHAR 87-97-011-143
ggd GIROFLEE 87-91-000-077
Dam - ANNADALE DILLY MUX08-009
ggs FERRY 19-90-003-045
gd BALLYMONEY TILLY BLMT-121
ggd MISTRALE BLMM-011

From an excellent dam line. Related to Reserve Female Champion in Dungannon February 2013.

116 Mr M Loughran
MILLGATE HYDRO LFR12-012. **Born 18/05/12.** **UK 9630001/2418-2.**

ggs IBIS 23-93-048-953
gs SUCRE 87-42-890-146
ggd JAFFA 87-94-011-922

Sire - CONDOR 19-33-099-583

ggs JESUITE 19-94-015-578
gd SARAH 19-31-338-780
ggd GRENADINE 19-91-000-355

ggs OCTOPUS 87-10-671-030
gs SYMPA 48-01-006-969
ggd OPERETTE 48-98-133-040

Dam - MILLGATE DAZZLER LFR08-036

ggs DAUPHIN 19-88-004-715
gd RACHELS TINSEL WT02-086
ggd RACHELS MARION WT96-794

Signet Recorded Weights **100** **200** **300** **400** **500**
Last BLUP'd 10/03/2013 135 222 327

MLC	C E(%)	C V	200M(kg)	200G(kg)	400G(kg)	Fat(mm)	MD(mm)	BV
Data EBV	-2.3	LM-2C	-3	+19	+34	-0.5	+2.3	LM+26
Acc %	56		60	39	72	67	49	65
BLCS Index	102		87	87	99	100	125	99
								71
								106

Commercially reared heifer with excellent bloodlines; Condor, Sympa & Dauphin. Hydro's sire, Condor, has bred calves to 32,000gns.

117 Mr RAG Savage
AGHADOLGAN HYACINTH SLC12-011. **Born 20/05/12.** **UK 9492481/332-3.**

ggs SYMPA 48-01-006-969
gs HALTCLIFFE UNDERWRITER RP03-003
ggd RONICK RICOLE DY00-078

Sire - CRAIGATOKO BOMBER CDZ06-002

ggs HALTCLIFFE HERCULES RP92-009
gd CRAIGATOKO REDROSE CDZ00-017
ggd CRAIGATOKO LIONA CDZ95-004

ggs SYMPA 48-01-006-969
gs HALTCLIFFE UNDERWRITER RP03-003
ggd RONICK RICOLE DY00-078

Dam - AGHADOLGAN BLOSSOM SLC06-020

ggs GOLDIES OSWALD GS98-064
gd CRAIGATOKO UNBREAKABLE CDZ03-026
ggd CRAIGATOKO REDLADY CDZ00-016

CLASS FOURTEEN FEMALES

118 Mr W J Bradley & Sons
DRUMARD HELEN BFB12-002. Born 04/06/12. UK 9562128/1195-7.

gs MILOU 19-96-018-369 ggs IVANHOE 19-93-004-050
ggd HUMEUR 19-92-000-094
Sire - POWERFUL DOLLARBILL IE121704090057
gd SARAH 23-02-704-759 ggs MAS DU CLO 23-96-032-213
ggd NUNUCHE 23-97-052-988
gs OLERON 19-98-010-932 ggs MONT D'OR 23-96-031-204
ggd TAPAGEUSE 19-82-008-916
Dam - NEWLITTLEMOUNT UNA CNJ03-001
ggs GALANT 87-91-013-099
gd MISTINGUET 19-96-003-265
ggd DOUCEUR 19-88-004-403

Father heavily muscled Milou son. Easy calving line.

119 Mark D Armstrong
SESKINGROVE HARMON AGU12-008. Born 12/06/12. UK 9100196/1515-4.

gs NECTAR 19-97-013-151 ggs GENIAL 87-91-002-491
ggd FRINGANTE 19-90-002-509
Sire - SEAVIEW CAPTAIN MMV07-017
gd SEAVIEW ODETTE MMV98-006 ggs UPLANDS BATMAN HLB-367
ggd UPPERMILL BABETTE AAFB-003-FOT
gs MAS DU CLO 23-96-032-213 ggs BAMBINO 19-86-005-742
ggd COSETTE 23-87-051-003
Dam - ALBIAN DELORES VJ08-002
ggs BROADMEADOWS CANNON CAVC-031
gd ALBIAN TARA VJ02-005
ggd STOCKDALES EVITA SDCE-007

120 Messrs H & D McFarland
RAHONEY HELEN **MDS12-013.** **Born 23/06/12.** **UK 9634843/1108-7.** **Got by AI.**
Twin to a female

ggs WILODGE TONKA WEY02-002
gs WILODGE VANTASTIC WEY04-037
ggd RAVENELLE 23-51-224-583

Sire - CARMORN COPILOT MCN07-038

ggs PELLETSTOWN KEN PELK-121
gd CARMORN PENNY MCN99-025
ggd CARMORN HELEN MCN92-002

ggs MAS DU CLO 23-96-032-213
gs DRUMMIN BEAU IE131206370510
ggd DRUMMIN PEACH IE131206330135

Dam - RAHONEY ELIZABETH MDS09-006

ggs HOMEBYRES VISITOR LAP04-041
gd RAHONEY BEAUTY MDS06-019
ggd RAHONEY SPARKLE MDS01-010

121 Messrs H & D McFarland
RAHONEY HAYLEY **MDS12-012.** **Born 23/06/12.** **UK 9634843/1107-6.** **Got by AI.**
Twin to a female

ggs WILODGE TONKA WEY02-002
gs WILODGE VANTASTIC WEY04-037
ggd RAVENELLE 23-51-224-583

Sire - CARMORN COPILOT MCN07-038

ggs PELLETSTOWN KEN PELK-121
gd CARMORN PENNY MCN99-025
ggd CARMORN HELEN MCN92-002

ggs MAS DU CLO 23-96-032-213
gs DRUMMIN BEAU IE131206370510
ggd DRUMMIN PEACH IE131206330135

Dam - RAHONEY ELIZABETH MDS09-006

ggs HOMEBYRES VISITOR LAP04-041
gd RAHONEY BEAUTY MDS06-019
ggd RAHONEY SPARKLE MDS01-010

Mr V J Keys
122 TOGHERDOO HELEN KYC12-003. Born 04/07/12. UK 9631492/0834-7. Got by AI.
 ggs OCTOPUS 87-10-671-030
 gs SYMPA 48-01-006-969
 ggd OPERETTE 48-98-133-040
Sire - AMPERTAINÉ ABRACADABRA MGD05-014
 ggs STOCKDALES MUSCULAR SDC96-012
 gd AMPERTAINÉ PENNY MGD99-001
 ggd AMPERTAINÉ HANNAH MGD92-003
 ggs WILODGE TONKA WEY02-002
 gs WILODGE VANTASTIC WEY04-037
 ggd RAVENELLE 23-51-224-583
Dam - TOGHERDOO ELEEN KYC09-009
 ggs BROADMEADOWS CANNON CAVC-031
 gd RONICK OPTIMA DY98-430
 ggd RONICK HARRIET DY92-021

Signet Recorded Weights **100** **200** **300** **400** **500**
 Last BLUP'd 10/03/2013 142 263

MLC	C E(%)	C V	200M(kg)	200G(kg)	400G(kg)	Fat(mm)	MD(mm)	BV
Data EBV	-1.0	LM+2C	0	+28	+50	-0.2	+4.5	LM+32
Acc %	60		67	53	72	69	58	67
BLCS Index	110		110	104	110	111	105	118
								71
								116

Out of a great Vantastic cow.

Mr M Loughran
123 MILLGATE HAZY LFR12-021. Born 08/07/12. UK 9630001/2427-4.
 ggs BAMBINO 19-86-005-742
 gs MAS DU CLO 23-96-032-213
 ggd COSETTE 23-87-051-003
Sire - BALLYLINE UDOLF BYEU-238
 ggs DAUPHIN 19-88-004-715
 gd RACHEL BYER-146
 ggd BALLYLINE KELLY BYEK-002
 ggs NENUPHAR 87-97-011-143
 gs MILLGATE CLINKER LFR07-013
 ggd MILLGATE TANGO LFR02-009
Dam - MILLGATE EIMEAR LFR09-022
 ggs PELLETSTOWN KEN PELK-121
 gd CARMORN TANYA MCN02-034
 ggd CARMORN NADINE MCN97-020

Signet Recorded Weights **100** **200** **300** **400** **500**
 Last BLUP'd 10/03/2013 149 249

MLC	C E(%)	C V	200M(kg)	200G(kg)	400G(kg)	Fat(mm)	MD(mm)	BV
Data EBV	-2.3	LM0C	0	+16	+37	-0.2	+2.0	LM+24
Acc %	57		60	46	72	68	56	66
BLCS Index	102		98	104	96	102	105	97
								72
								103

Millgate Hazy is a heifer's calf. Commercially reared. Millgate Hazy's sire, Ballyline Udolf, has bred the Carlisle Champion Feb 2009, sold for 18,000gns. Hazy's G sire, Millgate Clinker, was sold for 30,000gns, N.I. record price 2008.

124 Mr M Loughran
MILLGATE HALO LFR12-022. Born 10/07/12. UK 9630001/2428-5.
 ggs BAMBINO 19-86-005-742
 gs MAS DU CLO 23-96-032-213
 ggd COSETTE 23-87-051-003
Sire - BALLYLINE UDOLF BYEU-238
 ggs DAUPHIN 19-88-004-715
 gd RACHEL BYER-146
 ggd BALLYLINE KELLY BYEK-002
 ggs OMAR 19-30-288-541
 gs VIVALDI 36-15-015-938
 ggd NAPHTALINE 36-97-009-264
Dam - MILLGATE ERIN LFR09-025
 ggs UNITAIRE 15-24-296-612
 gd FEDNEYHOUSE BURNETTA ACU06-008
 ggd FEDNEYHOUSE UTA ACU03-010

Signet Recorded Weights **100** **200** **300** **400** **500**
 Last BLUP'd 10/03/2013 143 246

MLC	C E(%)	C V	200M(kg)	200G(kg)	400G(kg)	Fat(mm)	MD(mm)	BV
Data EBV	-1.6	LM+2C	0	+19	+35	-0.1	+3.2	LM+24
Acc %	57		61	46	72	67	55	66
BLCS Index	106		113	104	99	101	99	107
								71
								103

Millgate Halo is a heifer's calf. Commercially reared. Halo has top bloodlines; her sire, Ballyline Udolf, has bred the Carlisle Champion February 2009 sold for 18,000gns.

125 Mr W J Bradley & Sons
DRUMARD HOLLY BFB12-003. Born 15/07/12. UK 9562128/1201-6.
 ggs IVANHOE 19-93-004-050
 gs MILOU 19-96-018-369
 ggd HUMEUR 19-92-000-094
Sire - POWERFUL DOLLARBILL IE121704090057
 ggs MAS DU CLO 23-96-032-213
 gd SARAH 23-02-704-759
 ggd NUNUCHE 23-97-052-988
 ggs REDPATHS JAGUAR REY94-001
 gs ASHMARA NUTS MGP97-013
 ggd ASHMARA GALAXY MGPG-002
Dam - GLARRYFORD SHULA CGV01-024
 ggs SEBASTIEN 23-81-053-959
 gd GLENROCK HOLLY IE92-008
 ggd GLENROCK CLEO IEC-007

Father son of Milou. Mother largest cow in the herd.

126 Mr R Crawford
ERNE HADARA **CFC12-098.** **Born 31/07/12.** **UK 9484139/0791-1.**
 ggs GALOPIN 87-91-050-832
 gs MEXICAIN 87-96-005-520
 ggd ALLUMETTE 87-85-003-591
Sire - SAUVIGNON 23-02-858-738
 ggs TARVIS 19-82-001-611
 gd MANON 23-96-034-294
 ggd ETINCELLE 23-89-665-402
 ggs INOUI 87-93-010-988
 gs ORLY 16-98-121-061
 ggd GAVOTTE 23-91-053-188
Dam - LAKE CHRYSAL IE131636240515
 ggs HIGHLANDER 16-92-111-209
 gd LAKE TIAMARIA IE131636290296
 ggd LAKE PEARL IE131636210173

127 Mr R Crawford
ERNE HAYDEN **CFC12-100.** **Born 24/08/12.** **UK 9484139/0793-3.**
 ggs TAULIER 16-27-496-754
 gs VALET 19-32-059-300
 ggd RUISSELLE 19-30-828-500
Sire - CHARLIE 19-32-609-858
 ggs OMER 23-98-026-596
 gd VALSE 19-31-739-216
 ggd PAQUERETTE 19-30-158-216
 ggs BROADMEADOWS CANNON CAVC-031
 gs HALTCLIFFE HERCULES RP92-009
 ggd HALTCLIFFE CORAL RPC-011
Dam - CURRAGHREE CINDERELLA IE281516050131
 ggs GRAHAMS SAMSON GV01-098
 gd CURRAGHEE ADORABLE IE281516090110
 ggd CURRAGHREE PATRICE IE281516040048

128 Mr B. McAuley
LARKHILL HOPE **MMU12-011.** **Born 29/08/12.** **UK 9063020/0303-7.** **Got by AI.**
 ggs GLENROCK SPARTACUS IE01-152
 gs GLENROCK VENTURA IE04-432
 ggd GLENROCK SASPIRILLA IE01-148
Sire - AMPERTAINE COMMANDER MGD07-046
 ggs SYMPA 48-01-006-969
 gd AMPERTAINE ANNABELLA MGD05-015
 ggd KYPE SHARON CAQ01-041
 ggs WILODGE TONKA WEY02-002
 gs WILODGE VANTASTIC WEY04-037
 ggd RAVENELLE 23-51-224-583
Dam - LARKHILL FAY MMU10-001
 ggs PELLETSTOWN KEN PELK-121
 gd LARKHILL UMBELL MMU03-011
 ggd CARMORN MINA MCN96-008

Signet Recorded Weights
 Last BLUP'd 10/03/2013

100 200 300 400 500
 159

MLC	C E(%)	C V	200M(kg)	200G(kg)	400G(kg)	Fat(mm)	MD(mm)	BV
Data EBV	-3.8	LM+3C	-1	+40	+64	0	+5.1	LM+35
Acc %	61		68	50	63	61	51	60
BLCS Index	92		117	99	124	121	92	123

NATIONAL BEEF ASSOCIATION

TERMS AND CONDITIONS OF SALE INCORPORATING BULL BREEDING WARRANTY AND FEMALE BREEDING WARRANTIES

- a) For use by BREED SOCIETIES AT PUBLIC AUCTIONS held under the auspices of such Breed Societies.
- b) For use by INDIVIDUAL MEMBERS OF SUCH BREED SOCIETIES at reduction and production sales (and dispersal sales where warranties are offered), conducted by auctioneers approved by the relevant Breed Society.

IMPORTANT : These Terms and Conditions of Sale (hereinafter referred to as 'Terms') contain provisions by way of exclusion and limitation of liability in favour of the Vendor.

1 DEFINITIONS

1.1 In these Terms:

"FERTILE" in respect of a female animal means capable of conceiving by natural service and of carrying a calf for twelve weeks and the words "INFERTILE", "FERTILITY" and "INFERTILITY" shall be construed accordingly.

"INCAPABILITY" in respect of a bull means incapability of getting stock by natural service and the words "CAPABILITY", "CAPABLE" and "INCAPABLE" shall be construed accordingly. "MAIDEN HEIFER" means a heifer, which has never been served, by natural means or artificial insemination.

"PURCHASER" means:

- a) the successful bidder for any animal in the sale, or
- b) the successful bidder together with such one or more persons with whom the said bidder is in partnership, or engaged in a joint venture, and whose names shall have been notified to the Auctioneers on the day of the sale "SERVICE" without qualification means both service by natural means and service by artificial insemination and the words "SERVE" and "SERVED" without qualification shall be construed accordingly.

"SHIPMENT" means the sending or taking of an animal outside the United Kingdom.

"TERMS" means the standard terms and conditions of sale set out herein and (unless the context otherwise requires) include any special terms and conditions agreed in writing between the Vendor and the Purchaser in accordance with Clause 2.3 hereof.

2 BASIS OF THE CONTRACT

2.1 These Terms shall (subject to Clause 2.2 hereof) form the basis of the Contract between the Vendor and the Purchaser and from the said Contract all conditions and warranties implied under the Sale of Goods Act 1979 or any other statutory enactment or implied by law or custom are expressly excluded subject to the Unfair Contract Terms Act 1977 or any statutory re-enactment or modification thereof.

2.2 These Terms may not be varied in any way except by an announcement by the Auctioneers before or at the time of the sale and apart from such announcement no variation or inconsistent with any of these Terms or to make any collateral contract or other arrangement to which these Terms do not apply.

2.3 Neither the National Beef Association nor any of its Breed Society members accept any liability arising out of the use or application or form of these Terms.

2.4 Only animals owned by a member of a Pedigree Cattle Breed Society registered in the United Kingdom and affiliated to the National Beef Association and entered in the Herd Book of such Society or registers supplementary thereto shall be offered for Sale under these Terms.

3 GENERAL WARRANTIES

3.1 Each animal offered for sale has been bred by the Vendor unless otherwise stated in the Sale Catalogue or by the Auctioneers at the time of sale.

3.2 The Vendor guarantees the identity, correctness of pedigree, history and description of each animal submitted

for sale and contained in the Sale Catalogue (including all flushings for embryo transfer, caesarean operations and calvings recorded) save to the extent that any misdescription would be apparent on inspection or unless specifically amended by an announcement by the Auctioneers before or at the time of the sale.

3.3 The NBA promotes the concepts of high health status. The purchaser should Familiarise themselves with the health status of potential purchases in advance of them being sold.

3.4 The Sale Catalogue or The Auctioneers at the time of sale shall give full details of the following matters:

- a) defective vision,
- b) faulty udders,
- c) he fact, if this be so, that a freshly calved cow or heifer has not cleansed,
- d) any other physical defect,
- e) all caesarean births, premature births, multiple births and births from embryo transfer,
- f) all flushings of a female animal in an embryo programme together with the number of eggs collected,
- g) all records of performance and genetic evaluations, together with their sources,
- h) all previous calvings, including the date of the last service,
- i) in the case of a bull any semen taken from it including the number of straws taken from it, whether they are to be retained for private use or for general sale or to be sold with the bull and the number of straws sold prior to the sale,
- j) any transferred embryo being carried by a female animal.
- k) if the animal has failed a presale inspection on a potential fertility issue this animal cannot be sold under the terms and conditions of the breed warranty.

4 BULL BREEDING WARRANTY

4.1 Subject to the provisions of Clauses 4.2, 4.3, 6, 8 and 11 hereof each bull over the age of eight months at the date of the sale is sold with a warranty by the Vendor that it is capable of getting stock by natural service from fourteen* months of age which shall be deemed to be fulfilled as soon as Six Females or fifty per cent of the herd whichever shall be the lesser number of the animals put to the bull are in calf to the bull by natural service subsequent to the sale.

4.2 TRIAL PERIOD.

The Purchaser shall give the bull sufficient time and opportunity to prove itself capable of getting stock by natural service while applying the standards of good husbandry and management and, subject to Clause 4.3 hereof, in any event within six calendar months of the date of the sale or within six calendar months, of attaining the age of fourteen* months (whichever is the later).

EXTENDING THE TRIAL PERIOD.

If upon purchase of the bull, it is found impracticable for the Purchaser to try the bull fairly, within the period stated in clause 4.1 above, due to the purchasers normal calving programme, the purchaser shall ON THE DAY OF THE SALE, or within the next seven days, give the auctioneer

- notice IN WRITING of the month in which it is proposed to commence using the bull. AT THE DISCRETION OF THE VENDOR (in consultation with the auctioneer, if applicable), the vendor may extend the date of commencement of the Trial Period to the first day of the month in which the Purchaser has notified the vendor as in clause 4.2. Acceptance or otherwise of the purchasers written request, shall be conveyed to the purchaser, by the auctioneer, in writing, within seven days of the request being made.
- THE PURCHASER SHOULD NOTE THE TIME LIMIT FOR CLAIMS IN CLAUSE 8.1.2.1 BELOW.
5. **FEMALE BREEDING WARRANTIES**
Subject to the provisions of Clauses 6, 8 and 11 hereof.
- 5.1 **MAIDEN HEIFERS**
Every maiden heifer over the age of twelve* months at the date of the sale is sold with warranties by the Vendor.
- 5.1.1 that it shall be fertile up to the age of twenty-eight* months, which warranty shall be deemed to be fulfilled as soon as such animal is certified by a Veterinary Surgeon to be not less than twelve weeks, pregnant PROVIDED ALWAYS that no claim under this warranty shall be admitted before the animal reaches the age of twenty-four* months except in a case where a Veterinary Surgeon certifies that it is suffering from an abnormality or malfunction of the reproductive system which will permanently prevent fertility) and 5.1.2 that it is not in calf.
- 5.2 **HEIFERS RECENTLY SERVED**
Every heifer over the age of twelve* months at the date of the sale and described in the Sale Catalogue or by the Auctioneers at the time of the sale as having been served less than twelve weeks prior to the date of the sale is sold with warranties by the Vendor
- 5.2.1 that it shall be fertile up to the age of twenty-eight* months, which warranty shall be deemed to be fulfilled as soon as such animal is certified by a Veterinary Surgeon to be not less than twelve weeks pregnant PROVIDED ALWAYS that no claim under this warranty shall be admitted before the animal reaches the age of twenty-four* months (except in a case where a Veterinary Surgeon certifies that it is suffering from an abnormality or malfunction of the reproductive system which will permanently prevent fertility) and
- 5.2.2 that if it is in calf to the bull described in the Sale Catalogue or by the auctioneers at the time of the sale PROVIDED ALWAYS that no warranty is given or to be implied that such heifer is in calf at the time of the sale
- 5.3 **COWS UNSERVED**
Every cow, under the age of ten* years at the date of the sale and described in the sale Catalogue or by the Auctioneers at the time of the sale as unserved since last calving is sold with warranties by the Vendor
- 5.3.1 that it shall be fertile for a period of twenty-six weeks, from the date of the sale, which warranty shall be deemed to be fulfilled as soon as such animal is certified by a Veterinary Surgeon to be not less than twelve weeks pregnant, and that it is not in calf.
- 5.3.2 that it is not in calf.
- 5.4 **COWS RECENTLY SERVED**
Every cow, under the age of ten* years at the date of the sale and described in the sale Catalogue or by the Auctioneers at the time of the sale as having been served less than twelve weeks prior to the date of the sale is sold with warranties by the Vendor
- 5.4.1 that it shall be fertile for a period of twenty-six weeks from the date of the sale, which warranty shall be deemed to be fulfilled as soon as such animal is certified by a Veterinary Surgeon to be not less than twelve weeks pregnant, and that if it is in calf it is in calf to the bull described in the Sale Catalogue or by the Auctioneers at the time of the sale PROVIDED ALWAYS that no warranty is given or to be implied that any such cow is in calf at the time of the sale
- 5.4.2 that if it is in calf it is in calf to the bull described in the Sale Catalogue or by the Auctioneers at the time of the sale PROVIDED ALWAYS that no warranty is given or to be implied that any such cow is in calf at the time of the sale
- 5.5 **FEMALES IN CALF**
Every cow or heifer stated in the Sale Catalogue or by the Auctioneers at the time of the sale to have been served on a date "the service date" not less than twelve weeks before the date of the sale is sold with warranties by the Vendor that it is in calf, and
- 5.5.1 that it is in calf to the bull described in the Sale Catalogue, or by the Auctioneers at the time of the sale, and
- 5.5.2 that the expected calving date will be within a period of 263* to 303* days of the service date.
- 5.6 **FEMALES "RUNNING WITH BULL**
Every cow or heifer described in the Sale Catalogue or by the Auctioneers at the time of the sale as "running with the bull" up to a date not later than twelve weeks before the sale is sold with warranties by the Vendor
- 5.6.1 that it is in calf, and
- 5.6.2 that it is in calf to the bull described in the Sale Catalogue or by the Auctioneers at the time of the sale, and
- 5.6.3 that it is in calf to a service date at any time between the dates stated in the Sale Catalogue or by the Auctioneers at the time of the sale and that the latest expected calving date will be within a period of 263* to 303* days of the last possible service date.
- 5.7 **FEMALES WITH VETERINARY SURGEON'S CERTIFICATE OF POSITIVE PREGNANCY DIAGNOSIS**
N.B. Scanning is not accepted as proof of diagnosis less than 12 weeks. Every cow or heifer stated in the Sale Catalogue or by the Auctioneers at the time of the sale to be sold with a Veterinary Surgeon's Certificate of positive pregnancy diagnosis is sold with warranties by the Vendor.
- 5.7.1 that it is in calf, and
- 5.7.2 that it is in calf to the bull described in the Sale Catalogue or by the Auctioneers at the time of the sale and that the expected calving date will be within a period of 263* to 303* days of the service date stated in such Certificate notwithstanding that the said cow or heifer would not otherwise be sold with the benefit of the above warranties.
- THE PURCHASER SHOULD NOTE THE TIME LIMIT FOR CLAIMS IN CLAUSE 8.1.2 BELOW**
6. **LIMITATIONS ON THE APPLICATION OF WARRANTIES**
- 6.1 None of the warranties in Clauses 4 and 5 above shall apply
- 6.1.1 to any cow or heifer which has been subjected after birth or is subjected after the sale to any process involving the technique of embryo transfer, unless that animal's subsequent natural breeding record (as declared in the Sale Catalogue) indicates not less than one natural calving since the said embryo transfer, unless specifically warranted by the vendor.
- 6.1.2 to any cow or heifer, which has undergone a caesarean operation (as declared in the Sale Catalogue) unless that animal's subsequent natural breeding record (as declared in the Sale Catalogue) indicates not less than one natural non-surgical calving since the said operation
- 6.1.3 to any cow or heifer which is declared by the Vendor to be a twin to a bull, unless before the sale pregnancy has been certified in writing by a Veterinary Surgeon following rectal examination or the animal has produced a full term calf
- 6.1.4 to any animal, which has not been maintained by the Purchaser at all, times since purchase in a normal breeding condition, in accordance with the rules and practice of good animal husbandry and management
- 6.1.5 to any animal purchased for export outside the United Kingdom unless a claim shall have been notified within the time limits imposed by Clause 8.1.2 hereof and proved correct after all examinations and procedures deemed necessary by the Veterinary Surgeon appropriate under these Terms has been carried out) before the date on which shipment of the animal takes place.
- 6.1.6 to any animal, which has been rejected at the date of the sale by its Breed Society Inspector or Inspectors, appointed. For the purpose of that sale
- 6.1.7 to any animal which after the sale has contracted an illness or suffered an injury which may affect its fertility or capability as the case may be after the sale
- 6.1.8 to any animal, which does not remain the property of the Purchaser unless it was purchased by means of a hire purchase agreement and the title to, but not the right to

- possession of the animal has therefore been transferred to a finance or other hire purchase company
- 6.1.9 to any animal, which does not survive until the completion of all examinations and procedures, deemed necessary by the Veterinary Surgeons appointed under Clauses 8.9 and 10 hereof.
- 6.2 No warranty is given or to be implied that a cow or heifer will carry a calf full term or deliver a live or viable calf.
- 7. UDDER AND CLEANSING WARRANTIES**
Unless otherwise stated by the Auctioneers at the time of the sale.
- 7.1 every cow in calf or suckling a calf and every heifer suckling a calf at the time of the sale is sold with a Warranty that it is sound in the udder and teats at the time of the Sale PROVIDED ALWAYS that any claim under this warranty shall be made to the Auctioneers not later than one hour from the close of the sale and if the Auctioneers in their absolute discretion (having taken such veterinary advice as may be appropriate) decide that the udder is not sound in all respects, the sale of such animal shall be cancelled, and
- 7.2 every freshly calved cow or heifer is sold with a warranty by the Vendor that it has satisfactorily cleaned before the sale PROVIDED ALWAYS that:
- 7.2.1 any claim under this warranty shall be made, accompanied by a Veterinary Surgeon's Certificate, to the Auctioneers not later than three days from the date of the sale, and
- 7.2.2 without prejudice to the rights of the Purchaser set out in Clause 11 hereof, the Purchaser shall have the right to arrange such veterinary treatment to the animal (the cost of which shall be borne by the Vendor) as may rectify the animal's condition.
- 8. CLAIMS AND TIME LIMITS**
- 8.1 A claim by a Purchaser under any of the above warranties shall not be valid unless:
- 8.1.1 the animal remains the property of the Purchaser except where it was purchased by means of a hire purchase agreement and the title to but not the right to possession of the animal has therefore been transferred to a finance or other hire purchase company
- 8.1.2 the Purchaser shall have given notice in writing to the Auctioneers of the intended claim as soon as evidence supporting the claim comes to the Purchaser's notice and in any event within the following time limits:
- 8.1.2.1 Under Clause 4 in the case of a bull: within six calendar months:
- from the date of the sale; or
 - from the date when the bull attains the age of fourteen* months; or
 - from the date of the commencement of the trial period stated in Clause 4.3 above whichever is the later date
- 8.1.2.2 Under Clause 5.1.1 and 5.2.1 in the case of a maiden heifer or a heifer recently served:
- within three calendar months from the date of the sale; or
 - within one calendar month from the date when the heifer attains the age of twenty-eight* months whichever is the later date
- 8.1.2.3 **Under Clause 5.1.2 and 5.3.2**
In the case of a maiden heifer or a cow, which was sold as unserved, and which subsequently proves to be in calf: within twenty-six weeks from the date of the sale.
- 8.1.2.4 **Under Clause 5.3.1**
In the case of a cow sold as unserved since last calving and which proves infertile: within twenty-six weeks from the date of the sale.
- 8.1.2.5 **Under Clause 5.4.1**
in the case of a cow sold as recently served and which proves infertile: within twenty-six weeks from the date of the sale.
- 8.1.2.6 **Under Clauses 5.2.2 and 5.4.2**
in the case of a cow or heifer which, although not warranted to be in calf, produces a calf to a bull other than that stated to be the service sire: within fourteen days from the calving date.
- 8.1.2.7 **Under Clauses 5.5.1, 5.6.1 and 5.7.1**
in the case of a cow or heifer sold as being in calf or sold as running with the bull, and which proves not to be in calf: within twenty-eight days from the date of the sale.
- 8.1.2.8 **Under Clauses 5.5.2, 5.6.2 and 5.7.2**
in the case of a cow or heifer which, having been warranted to be in calf, produces a calf to a bull other than that stated as the service sire in the sale Catalogue or by the Auctioneers at the time of the sale as the case may be: within fourteen days from the calving date.
- 8.1.2.9 Under Clauses 5.5.3, 5.6.3 and 5.7.3 in the case of a cow or heifer which, although in calf, does not calve to the stated service date: within fourteen days from the expected calving date.
- 8.1.2.10 **Under Clause 7.1**
in the case of a cow or heifer whose udder is not sound: within one hour from the close of the sale.
- 8.1.2.11 **Under Clause 7.2**
in the case of a cow or heifer which has not satisfactorily cleaned before the sale: within three days from the date of the sale.
- Claims Procedure**
- 8.1.3 in the case of a claim under Clauses 4, 5.1.1, 5.2.1, 5.3.1 or 5.4.1 the Purchaser shall within thirty days of the receipt of a Bull Fertility Report Form or a Female Fertility Report Form as the case may be, (which shall be available from the National Beef Association) return it to the Auctioneers, completed by a Veterinary Surgeon appointed by the Purchaser
- 8.1.4 the Veterinary Surgeon appointed in accordance with sub-clause 8.1.3 hereof certifies in writing that:
- 8.1.4.1 the animal is in a normal breeding condition, and
- 8.1.4.2 the animal's infertility or incapability as the case may be is not due to illness contracted or an injury suffered, or poor husbandry after the 'fall of the hammer;' and
- 8.1.4.3 in the case of a bull he has examined the cows and heifers on which the bull has been tried and has found them to be in normal breeding condition and that they are not responsible for the bull's incapability, or
- 8.1.4.4 In the case of a cow or heifer, he has examined any bull with which the cow or heifer has been running after the sale and has found the said bull to be capable of getting stock by natural service
- 8.1.5 In the case of a claim under Clause 5.1.2, 5.3.2, 5.5.1, 5.6.1, or 5.7.1 the Purchaser shall when notifying such claim, forward to the Auctioneers a Certificate from the Purchaser's Veterinary Surgeon certifying the animal is or not in calf as the case may be
- 8.1.6 In the case of a claim under Clause 5.2.2, 5.4.2, 5.5.2, 5.6.2, or 5.7.2 the Purchaser shall when notifying such claim forward to the Auctioneers a Report from the Purchaser's Veterinary Surgeon giving his opinion that the animal has produced a calf to a bull other than that stated to be the service sire
- 8.1.7 In the case of a claim under Clause 5.5.3, 5.6.3, or 5.7.3 the Purchaser shall, when notifying such claim, forward to the Auctioneers a Certificate from the Purchaser's Veterinary Surgeon certifying that the animal has not calved to the stated service date
- 8.1.8 Where any claim concerns an animal purchased for export outside the United Kingdom it shall have been notified and proved correct (after all examinations and procedures deemed necessary by the Veterinary Surgeons appointed under these Terms have been carried out) before the date on which shipment takes place or before the relevant period in sub-clause 8.1.2 (whichever shall be the earlier date)
- 8.1.9 The animal shall survive at least until the completion of all examinations and procedures deemed necessary the Veterinary Surgeons appointed under Clauses 8, 9 and 10 hereof
- 8.2 Where notice of an intended claim is given to the Auctioneers in accordance with sub-clause 8.1.2 the Auctioneers shall immediately inform the Vendor and the

- Secretary of the Breed Society with which the animal is registered, and forward to the Vendor a copy of the relevant Report Form if applicable.
9. **EXAMINATION OF ANIMALS**
- 9.1 Upon receipt by the Auctioneers in accordance with sub-clause 8.1.2 of any notice of claim under any of the above warranties the Purchaser shall permit a Veterinary Surgeon appointed by the Vendor to examine the animal should the Vendor desire such examination
10. **DISPUTES**
- 10.1 Any dispute as to the condition, fertility or capability of an animal under the warranties contained in these Terms shall be determined by a Veterinary Surgeon acting as an Arbitrator under the Arbitration Act 1996 appointed by agreement between the Purchaser and the Vendor or in default of such agreement appointed by the President for the time being of the British Veterinary Association within 28 days of a request for Arbitration being made in writing to the Auctioneers.
- 10.2 The Veterinary Surgeon shall have the power to make such directions including (but without prejudice to the generality of such directions) directions as to costs and directions under sub-clause 10.3 below and to make such investigations as he thinks fit and the Purchaser and the Vendor shall comply with such directions and shall co-operate in such investigations and shall provide such records and information to the Veterinary Surgeon as he may require
- 10.3 If the Veterinary Surgeon so appointed decides that further opportunities are required to prove whether or not a bull is capable of getting stock by natural service or, as the case may be, whether or not a cow or heifer is fertile, he shall direct under what conditions and within what timescale such opportunities shall be afforded, and the Purchaser shall, if so directed by the Veterinary Surgeon, allow the Vendor to remove; he animal from the Purchaser's premises and the Vendor shall, if so required by the Veterinary Surgeon, afford such opportunities as the Veterinary Surgeon may direct and shall, before removal of the animal, lodge with the Auctioneers the whole amount of the purchase money (or such part of it as the Purchaser has paid) for the animal, interest thereon to accrue for the benefit of the Vendor pending the outcome of the dispute.
- 10.4 The Veterinary Surgeon's decision as to the condition, fertility or capability as the case may be of the animal shall be final and binding upon the Vendor and the Purchaser, PROVIDED ALWAYS that the Veterinary Surgeon may decide in favour of the Vendor if in his opinion the cow or heifer would have proved fertile or the bull would have proved capable of getting stock by natural service within the terms and period allowed by the relevant warranty if within that period the appropriate opportunity or veterinary treatment had been given or proper management or principles of good husbandry had been applied.
- 10.5 If the Veterinary Surgeon decides in favour of the Vendor, then the Purchaser, or if he decides in favour of the Purchaser, the Vendor shall pay or reimburse all veterinary and laboratory fees and any reasonable transport costs incurred by both parties in the course of the dispute.
11. **LIMITATION OF RIGHTS ON BREACH OF WARRANTY**
- 11.1 Upon breach of any warranty contained in these Terms the Purchaser shall have the right to return the animal, together with any calf sold at foot or born subsequent to the sale, and recover from the Vendor:
- 11.1.1 the purchase money or such part of it as the Purchaser has paid;
- 11.1.2 interest thereon calculated on a daily basis at two percent above the Base Lending Rate from time to time in force at Lloyds Bank Plc from the date upon which notice of the claim was received by the Auctioneers to the date of return or the date of disposal of the animal as the case may be;
- 11.1.3 the expense of transporting any such animal to and from the Purchaser's premises:
- 11.1.4 the reasonable cost of any such animal's keep, as determined by the relevant Breed Society, from the date on which notice of the claim was received by the Auctioneers to the date of return to the Vendor's premises or the date of disposal of the animal as the case may be, not exceeding the slaughter carcass value of the animal at the date of return, which sum shall be assessed by the Auctioneers, whose assessment shall be final and binding upon the Vendor and the Purchaser;
- 11.1.5 the cost of insuring the animal from the date of purchase;
- 11.1.6 the reasonable expenses (including laboratory fees) of any Veterinary Surgeon employed for the purposes of investigating the animal's condition, fertility or capability as the case may be and for making a claim under these Terms
- BUT THE PURCHASER SHALL HAVE NO RIGHT TO CLAIM DAMAGES FROM THE VENDOR IN RESPECT OF:**
- (i) **ANY INDIRECT OR CONSEQUENTIAL LOSS SUCH AS (BUT NOT LIMITED TO) LOSS OF PROFITS, OR**
- (ii) **ANY OTHER LOSS WHATSOEVER.**
12. **TIME LIMITS**
- 12.1 Time shall be of the essence of all Terms in which time limits are prescribed and a claim made under any warranty herein will not be admitted unless made within the prescribed time limit provided that where time limited for any person to do anything expires on a Sunday, Bank Holiday or Public Holiday or on a day following next after any such days then such Sunday, Bank Holiday or Public Holiday shall be excluded from the computation of the time.
- 12.2 In the computation of any period of time before or after the sale or any other event, the day of the sale or other event, as the case may be, shall be excluded.
- 12.3 All periods expressed, as a number of days shall be taken to refer to that number of clear days, and similarly for any period of time.
13. **ARBITRATION**
- 13.1 Any disputes, other than those determined by the Veterinary Surgeon in accordance with Clause 10 hereof, between Vendor and Purchaser shall be referred in accordance with the provisions of the Arbitration Act 1996 and all statutory modifications thereof for the time being in force to a single arbitrator to be appointed by agreement between Vendor and Purchaser or in default of agreement by the President for the time being of the Institute of Auctioneers. In the case of veterinary disputes the President of BVA or in the case of an expenses dispute by the President of the CAAV or IAAS or arbitrator nominated by them.
14. **NOTICES**
- Any notice required to be served on any person shall be deemed to have been duly served if left at or sent by prepaid first-class post to that person at his last known abode or principal place of business and shall if sent by post to that person at his last known abode or principal place of business be deemed to have been received on the fourth day after the date on which it was sent.
15. **GENERAL**
- 15.1 If any provision of these Terms is held by any competent Authority or Court to be invalid or unenforceable in whole or in part the validity of the other provisions of these Terms and the remainder of the provision in question shall not be affected thereby.
- 15.2 The headings in these Terms are for convenience only and shall not affect their interpretation.
- 15.3 The validity, construction and performance of these Terms shall be governed by the Laws of England.



Ai SERVICES
– NORTHERN IRELAND –

BEEF RECORDING SCHEME

As a Pedigree Breeder:

Are you interested in improving the genetic composition of the herd? Could you use EBVs as well as your own judgment to help select males and females to keep or sell as breeding stock? When selling your breeding stock can you provide the relevant breeding values? Signet Beef breeder will provide you with this information.

Signet Beef breeder, the only genetic recording scheme for Beef Cattle in the UK with International recognition, is available in Northern Ireland through A1 Services.

IF YOU ARE NOT CURRENTLY RECORDING YOUR PEDIGREE HERD, THEN CONTACT Ai SERVICES FOR FURTHER DETAILS AND REGISTRATION FORM ON (028) 9083 3123.

**Ballycraigy, 671 Antrim Road, Newtownabbey
Co. Antrim BT36 8RL
Tel: (028) 90833123 Fax: (028) 90841640**

Future Sales & Events

GENERAL MEETING AND SPECIAL MEETING

May/June Date TBC
Dungannon Rugby Club

-oOo-

YOUNG BREEDERS STOCKJUDGING

Tuesday 18th June 2013
Cheshire County Show

-oOo-

ALL IRELAND BULL & HEIFER DERBY

Castlewellan Agricultural Show
Saturday 13th July 2013
Entries close 15th June 2013

-oOo-

NI JUNIOR CHAMPIONSHIPS

Antrim Agricultural Show
Saturday 27th July 2013
Entries close 30th June 2013

-oOo-

ANGLO IRISH STOCKJUDGING EVENT

Saturday 17th August 2013
Cappamore Show, Co Limerick

For further details please contact Secretary



NI LIMOUSIN CATTLE CLUB

– Membership Application Form –

Surname _____

Christian Name _____

Address _____

Postcode _____

Telephone No. _____

Herd Prefix _____

Annual Membership Fee £25 payable from January 1st _____

Bankers' Order – enclosed

/forwarded

TO THE MANAGER

BANK LTD.

Please pay to the First Trust Bank,
Cregagh Road, Belfast, the sum of (_____)

on receipt of this order, and thereafter on 1st January each year until further notice, for the Credit of
the Northern Ireland Limousin Cattle Club/Secretary (21053092 – Sort Code 938343).

Date _____ Members Account No. _____

Name _____

Address _____

Signature _____

**Please post to: Northern Ireland Limousin Cattle Club
c/o Mrs Heather Hume
44 Maghereagh Road, Randalstown, Co. Antrim BT41 2EQ**

NOW YOU'VE BOUGHT IT!

PLEASE INSURE IT!

Pedigree cattle are a valuable possession – it makes sense to insure valuables.

Why insure today?

- There are special rates for this sale.
- Animals have been veterinary inspected for insurance purposes.
- You can pay for your animal and the insurance together.
- You have immediate cover.
- Your animal is insured for transit home.

For animals not insured prior to leaving the premises you will have to bear the cost of a further veterinary inspection.

Tom and Doris Leeman, are approved by the Financial Services Authority to act on behalf of Crowe Livestock Underwriting Ltd. They will be available in the mart office during the sale, to assist with all aspects of insurance. Please pick up the free leaflet on the counter which gives further details of insurance arrangements and cover.

You may contact Tom or Doris on 028 9261 1044.

E mail: doris@leemanpr.demon.co.uk



LEEMAN PEDIGREE LIVESTOCK INSURANCE

Covers: Infertility, Mortality and Loss of Use

MORTALITY INSURANCE

Covers animals against DEATH as the result of an ACCIDENT or ILLNESS, and includes death of a female as a result of calving.

LOSS OF USE

Mortality insurance also includes LOSS OF USE on bulls eg. if a bull which has been working successfully is no longer able to serve cows, resulting from an accident, illness or disease sustained or contracted after purchase and during the period of insurance.

(The insurance does not cover compulsory slaughter by DARD eg due to TB, Brucellosis, Foot and Mouth etc., although this can be purchased separately). All terms and conditions as per the Insurance certificate.

FERTILITY INSURANCE

Covers the Bull Breeding Warranty which is the responsibility of the VENDOR. Covers bulls that fail to produce progeny due to congenital infertility as per the NBA Bull Breeding Warranty terms and conditions.

PEDIGREE CATTLE ARE A VALUABLE POSSESSION- IT MAKES SENSE TO INSURE VALUABLES.

- Please note that in the event of a claim an independent vet acting on behalf of Crowe Livestock may investigate the claim and carry out DNA and blood tests.

For full details of cover contact:

Tom or Doris Leeman, Leeman Pedigree Livestock Insurance
Tel/Fax: 028 9261 1044 E Mail: doris@leemanpr.com or tom@leemanpr.com

Tom & Doris Leeman are Appointed Representatives of Crowe Livestock,
a trading name of Amlin Underwriting Services Limited
Authorised and regulated by the Financial Services Authority

Have you ever considered the stress that transport, sales, and new surroundings can mean for an animal, in addition to the disease risk of moving to a new home?

Care of Your Stock to meet Insurance requirements

Cattle insurance covers the risk of accidents or disease but not poor management and neglect eg if you take a newly purchased young bull home and put him straight out with a herd of cows then the chances of fertility problems are extremely high.

If you are **a seller** of pedigree stock do you take time to inform the new owner of the health status on your farm and the feeding regime for the animal that is being sold? Do you send some extra feed home with the new owner so that he or she can introduce the animal gradually to a new diet? Do you help the new owner to load the animal so that it will not be alarmed when a strange handler tries to load it?

If you are **a purchaser** of pedigree stock you should ensure that the new stock match the health requirements on your farm and have had any necessary vaccinations? eg TB, Johne's, IBR and BVD, especially if you are in a herd health scheme. Your veterinary surgeon will advise.

If you are buying at a breed society sale then the animals will be veterinary inspected. If not, then you need to request that the seller has this inspection carried out before you purchase.

Place newly purchased stock in isolation until you have the results of any tests carried out, and until they have rested and familiarised themselves with their new surroundings and adjusted to any new diet. During isolation they should be able to see farm activities, and preferably see other stock.

Bulls at sales are often in 'show' condition which can affect semen quality. It can take 4 to 6 weeks to lose extra show condition, and ensure the bull is 'fit' but not 'fat'. He should have access to an area of concrete for three to four weeks before use, especially if he has been kept on grass or straw prior to purchase. This will allow the feet to toughen up before he starts working.

When a young bull has settled bring one or two cows to him so that he is introduced to service gradually. Observe him closely to ensure that he is inseminating the cow. If these cows do not repeat he can go out with the herd, but be warned **20 to 25 cows is the maximum he should be allowed to serve in the first year.**

The management and feeding routine on a farm may be assessed by an independent vet in the event of an insurance claim for fertility, mortality or loss of use.

Prize List

Judge: Mr John Green

	1st	2nd	3rd	4th	5th
Class 1					
Class 2					
Class 3					
Class 4					
Class 5					
Class 6					
Class 7					
Class 8					
Class 9					
Class 10					
Class 11					
Class 12					
Class 13					

Champion Senior & Reserve Bull to be sold at the end of the Senior class.

Champion Intermediate & Reserve Bull to be sold between the two Intermediate classes.

Champion Junior & Reserve Bull to be sold at the beginning of the Junior Classes.

Champion & Reserve Female to be sold at the end of the 2nd Class of Females.

Championship Winners

Junior Male Champion	<i>Lot</i>
Reserve Junior Male Champion	<i>Lot</i>

Intermediate Male Champion	<i>Lot</i>
Reserve Intermediate Male Champion	<i>Lot</i>

Senior Male Champion	<i>Lot</i>
Reserve Senior Male Champion	<i>Lot</i>

Overall Male Champion	<i>Lot</i>
Reserve Overall Male Champion	<i>Lot</i>

Female Champion	<i>Lot</i>
Reserve Female Champion	<i>Lot</i>

Overall Supreme Champion	<i>Lot</i>
Reserve Overall Supreme Champion	<i>Lot</i>

Hotels in Ballymena

Adair Arms

1-7 Ballymoney Rd
Ballymena, BT43 5BS
028 25653674

Tullyglass House Hotel

Galgorm Road
Ballymena
Co Antrim
BT42 1HJ
Tel: +0044 (0) 2825 652639
Fax: +0044 (0) 2825 646938

Guest houses

Slemish House

51 Albert Pl
Ballymena, BT43 6DY
028 25647383

Travellers Rest

64 Galgorm Rd
Ballymena, BT42 1AA
028 2564 7896

Glenfield

141 Church Road
Glenwherry
028 25831283

The Howe B & B

68 Knowehead Road,
Broughshane, Ballymena,
BT43 7JE

J A McCLELLAND & SONS (AUCTS) Ltd.
2 DOAGH RD. BALLYCLARE
Incorporating
J M WREATH & CO.
BALLYMONEY

ESTATE AGENTS & AUCTIONEERS

LARGE CHOICE OF
RESIDENTIAL PROPERTIES, SMALL HOLDINGS
BUILDING SITES & FARMS
THROUGHOUT CO. ANTRIM

Thinking of selling - contact our sales team for a free valuation
Tel 028 93 352727

Full list of properties on our web site- www.jamcclelland.com

SPECIALISTS IN RURAL FARM SALES, LAND MANAGEMENT, WAYLEAVE
COMPENSATION CLAIMS AND VALUATIONS FOR INHERITANCE AND
CAPITAL GAINS TAX PLANNING

BALLYMENA LIVESTOCK MART

MONDAY EVENING -BREEDING SHEEP

TUESDAY – STORE CATTLE

WEDNESDAY – FAT SHEEP

THURSDAY – FAT CATTLE

FRIDAY – DAIRY COWS, SUCKLERS, CALVES & WEANLINGS

SUCKLED CALVES – EACH SATURDAY IN OCTOBER AND NOVEMBER

SEASONAL SALES OF SHEEP HELD IN THE MART AND THE GLENS OF
ANTRIM EACH AUGUST, SEPTEMBER AND OCTOBER

OFFICIAL AUCTIONEERS FOR THE FOLLOWING SHEEP BREEDS :-

NI LIMOUSIN CATTLE CLUB

NI CHAROLAIS CLUB

NI HOLSTEIN FRIESIAN CLUB

URBA – BORDER LEICESTER AND BLACKFACE SHEEP

NI TEXEL CLUB

NI SUFFOLK SHEEP ASSOCIATION

NI BLUEFACE LEICESTER SHEEP ASSOC

NI DORSET HORN SHEEP CLUB

BELTEX SHEEP SOCIETY

NI LLEYN SHEEP

NI HAMPSHIRE DOWN SHEEP

NOTES

NOTES

NOTES