



HARRISON & HETHERINGTON

Farmstock Auctioneers, Brokers & Valuers

LIMOUSIN

SUMMER SALE OF BULLS

Friday 14th June 2013



To be held at
Borderway Mart, Carlisle, Cumbria CA1 2RS

BORDERWAY AGRI-EXPO 2013

FRIDAY 1st NOVEMBER 2013

Borderway Centre · Carlisle
Show Office: 01228 406230
www.harrisonandhetherington.co.uk

- National Suckled Calf & Primestock Show
- National Prime Sheep Show
- Also National Breed Society Calf Shows for Aberdeen Angus, British Blue, Hereford, Beef Shorthorn and Simmental and Special Mule Sheep Show

also on show . . .

- Machinery Show & Demonstrations
- Young Farmers Club Competitions
- Trade Stands & Educational Exhibits

MAINLINE SPONSORS



Catalogue for
The British Limousin Cattle Society Limited

SUMMER SALE

of

57
BULLS

(SOLD UNDER BLCS AUCTION RULES & CONDITIONS OF SALE)

FRIDAY 14th JUNE 2013

Sale to commence at 11.30am

to be held at Borderway Mart, Rosehill, Carlisle
(adjacent to J43 M6 Motorway)



Front Cover - Dolcorsllwyn Fabio 120,000gns, Breed World Record price



Auctioneers

HARRISON & HETHERINGTON
Farmstock Auctioneers, Brokers & Valuers

Head Office: Borderway Mart Rosehill Carlisle CA1 2RS

Telephone: 01228 406230 – Fax: 01228 406231

E-mail: info@borderway.com Website: www.harrisonandhetherington.co.uk

IMPORTANT NOTICE TO PROSPECTIVE PURCHASERS

SETTLEMENT & CLEARANCE OF STOCK

Please note that all lots must be settled
on the day of purchase

Completion of a buyers slip is essential for parties
who have not dealt with the company before

New customers and agents wishing to purchase on behalf
of another party must contact the companys main office
48 hours prior to a sale

No Lots can leave the market without a
'pass slip' being issued by the main office

Purchasers From Outside The United Kingdom

Invoices will be raised in pounds sterling.

We request that payment is made to us in pounds sterling
by cheque/bankers draft on the day of sale.

Card facilities are available (2% surcharge on credit cards)



HARRISON & HETHERINGTON
Farmstock Auctioneers, Brokers & Valuers

**IMPORTANT NOTICE
TO PROSPECTIVE PURCHASERS**

ALL LOTS MUST BE SETTLED ON THE DAY OF PURCHASE

Parties who have not dealt with the company before should complete the undernoted form and hand it in to the auctioneers' clerk when a purchase is made.

Alternatively it can be sent to the main office in advance of the sale.

Please fold and detach along this perforation

SALE

DATE

TRADING NAME

PARTNERS NAMES (if applicable)

FULL POSTAL ADDRESS

POSTCODE

TEL. NO

H&H ACCOUNT No. (if known)

HOLDING NO.

HERD/FLOCK PREFIX

LOT NUMBER(s)

2013 LIST OF ACCOMMODATION WITHIN EASY REACH OF BORDERWAY MART

FARM HOUSE ACCOMMODATION

Mrs P Armstrong, Longlands, Greenwoodside, Kirklington, Carlisle CA6 6DL

Tel: 01228 675130

Mrs M Harris, Whitbarrow Farm, Berrier, Penrith, Cumbria CA11 0XB

Tel: 01768 483366

Mrs D Nicholson, Gill Farm, Blackford, Carlisle. CA6 4EL

Tel: 01228 675326

Mr & Mrs D Stobart, Gladmuir, Broomfallen Road, Scotby, Carlisle CA4 8DG

Tel: 01228 513406

GUEST HOUSE ACCOMMODATION

Abbey Court Guest House, 24 London Road, Carlisle CA1 2EL

Tel: 01228 528696

Cherry Grove Guest House, 87 Petteril Street, Carlisle CA1 2AW

Tel: 01228 541942

Cornerways Guest House, 107 Warwick Road, Carlisle CA1 1EA

Tel: 01228 521733

Crossroads House, Brisco, Carlisle CA4 0QZ

Tel: 01228 528994

James & Elaine Knox, The Steading, Townhead Farm, Houghton, Carlisle. CA6 4JB

Tel: 01228 523019

Howard Lodge Guest House, 90 Warwick Road, Carlisle CA1 1JU

Tel: 01228 529842

Langleigh and Derwentlea, 6 & 14 Howard Place, Carlisle CA1 1HR

Tel: 01228 530440

Town House B&B, 153 Warwick Road, Carlisle CA1 1LU

Tel: 01228 598782

HOTELS

Angus Hotel 14-16 Scotland Road, Carlisle CA3 9DG

Tel: 01228 523546

*Carlisle Swallow Hilltop Hotel, London Road, Carlisle CA1 2NS

Tel: 01228 529255

*Crown Hotel, Station Road, Wetheral, Carlisle

Tel: 01228 561888

Farlam Hall, Country House Hotel, Brampton, Cumbria

Tel: 016977 46234

Pinegrove Hotel, 262 London Road, Carlisle CA1 2QS

Tel: 01228 524828

Smiths Hotel Gretna Green, Headless Cross, Gretna Green, Dumfries & Galloway DG12 5EA

Tel: 01461 337007

*Customers of H&H offered a Special Rate

Also log onto www.harrisonandhetherington.co.uk for further details of accommodation.

BIO SECURITY RULES
HARRISON & HETHERINGTON LIMITED, BORDERWAY MART, CARLISLE
Notice to all Visitors and Traders

Please read and observe the following:

- Excessive dirty vehicles will not be allowed entry, therefore ensure vehicle is clean before arrival.
- All vehicles transporting livestock will be subject to a documentation check before entry to market site.
- All visitors and traders must ensure they wear clean clothing and footwear before entering market site.
- All visitors and traders using car park areas please use main entrance.
- Hauliers and farmers delivering livestock must disinfect their boots before and after loading or unloading.
- Livestock purchased or unsold will not be allowed to move unless an authorised "pass slip" has been issued by the main office.
- No livestock will be allowed to remain on the premises after a sale.
- Only staff, livestock hauliers, owners or their agents are permitted to load or unload livestock.
- Wash hands thoroughly when leaving pennaage areas.
- Please observe our staff's instructions at all times.

Our on site Biosecurity Officer, Stan Abbot, will only be too pleased to give you assistance.



General Information & Sale Notes

LOCATION: The Sale will be held in the Borderway Mart, Carlisle Cumbria. Motorists should leave the M6 at Junction 43 and follow CARLISLE signs. The market is on the left hand side of the road within 1 /4 mile of M6.

Timetable of Events:-

Thursday 13th June	Arrival of Stock	1.00pm - 6.00pm
Friday 14th June	Arrival of Stock	7.00am - 9.00am
	Inspection of Stock	8.00am - 10.30am
	Sale	11.30am

HOTELS: There are many hotels within the area, ranging from four star to excellent Bed and Breakfast accommodation, a list of which may be found on page 4 of the catalogue.

CONDITIONS OF SALE: The British Limousin Cattle Society have adopted the Auction Rules and Conditions of Sale drawn up by the N.B.A. This Sale is held subject to these rules and the Auctioneers' General Conditions of Sale, both available on request. In the event of any discrepancy between the two sets of conditions, the N.B.A. Conditions of Sale shall prevail.

INSURANCE: A representative of the H & H Insurance Brokers, will be present at the sale and will be pleased to quote Purchasers for transit and other risks.

METHOD OF SALE: All cattle will be sold in guineas (105 pence) and strictly in catalogue order, unless any alteration is announced by the Auctioneers.

COMMISSIONS: The Auctioneers will dutifully execute commissions to purchase for buyers unable to attend the sale personally, upon receipt of written instructions.

REGISTRATIONS: All stock in the Sale are registered with the British Limousin Cattle Society, Avenue Q, National Agricultural Centre, Stoneleigh, Kenilworth, Warwickshire CV8 2RA (Tel 02476 696500).

PEDIGREE TRANSFERS: Official Pedigree Transfers will be effected by the Auctioneers and the British Limousin Cattle Society as soon as possible after the Sale. Full Pedigrees will be transferred free of charge to all members.

SETTLEMENT AND CLEARANCE OF STOCK: Settlement in full is due immediately at the close of Sale. No animal may leave the Sale Premises without an official 'Pass Slip', obtainable only from the Auctioneers upon settlement.

Purchasers unable to remove their stock on the day of sale can arrange overnight accommodation with the Auctioneers on the understanding that all cattle are at Purchasers' risk.

ANIMAL WELFARE: Vendors and Purchasers should note the CODE OF PRACTICE published by the Livestock Auctioneers' Market Committee for England and Wales IS OPERATIVE IN BORDERWAY MART and that weakly, unhealthy or injured stock will be refused entry by the Auctioneers. Enquiries should be directed through the market office to the Auctioneers' ANIMAL HEALTH & WELFARE OFFICER (Mr Andrew Templeton).

Important Notice to Vendors

ARRIVAL OF STOCK - As per timetable of events (page 5).

PRE-SALE INSPECTION: All animals entered for the sale must be available for inspection, as per the timetable of events. A Veterinary Officer will examine all animals forward for general health and genetic defects, particularly teeth, eyes, testicles and warts. Appointed Society Inspector will check general conformation, locomotion and breed characteristics and temperament. Any animal discovered with a genetic fault, disease or disorder will be REJECTED. Animals will be placed in a crush for this inspection - as required by the Veterinary Officer. The Veterinary inspection will form an integral part of the pre-sale inspection procedure.

Please note - "All animals are subject to a pre-sale inspection to provide a minimum standard and animals are sold with all patent defects, and any subsequent claim after the fall of the hammer is against the vendor and not The British Limousin Cattle Society Ltd".

MARGINAL TEETH - Any bull found to have marginal teeth when inspected will have their sale ticket marked in yellow.

SIGNET RECORDED WEIGHTS & HEIGHTS - All bulls will be weighed and measured by SIGNET Officials as an integral part of the pre-sale inspection procedure. Official weights and heights (in kgs and cms) will be displayed above each pen. ALL BULLS WILL BE SUBJECT TO A MINIMUM SALE DAY WEIGHT STANDARD - 400 days, 508kg; 500 days, 618kg; 600 days 723kg; 700 days 823kg (a full list of weights is printed on page 10). Vendors are reminded of the weight loss which can occur with animals during a journey.

EVERY BULL entered for the Sale, **MUST BE ADEQUATELY TRAINED TO LEAD BY HALTER** and **MUST BE PARADED FOR INSPECTION** unless exempted by the Stewards, at the time and place to be notified. Evidence of faults of temperament, vices, etc., may lead to disqualification. All bulls must be provided with a serviceable halter, which will become the property of the purchaser.

TATTOO MARKS/UK TAGS - All cattle entered for the Sale will have their tattoo marks/UK Tags examined as an integral part of the pre sale inspection procedure. Any marks found to have faulty, incorrect or illegible marks will be REJECTED from the Sale. Vendors are therefore urged, in their own best interests, to examine the tattoo marks of Sale cattle before the animal(s) leave their farm, so that faulty marks can be rectified in accordance with the required Society procedures.

The Sale will be held subject to the Auction Rules, Conditions of Sale and Special Regulations of the British Limousin Cattle Society.

The proceeds of sale are guaranteed by the Auctioneers, who will account to Vendors on the day of the Sale. Such guarantee, however, does not extend to the animals sold for export, to which special conditions apply.

UPSET PRICES - There will be an 'Upset' price of 1500 guineas on each bull presented for sale - i.e. if no opening bid of 1500gs is received for any particular lot, that lot will be passed out of the ring unsold.

RESERVE PRICES: Vendors shall have the right to refuse to accept the final bid for their animals. The auctioneers reserve the right to charge half commission on the amount of the final bid in the case of animals which fail to reach the Vendors reserve price.

All animals will be sold in guineas (105 pence) and a commission of 5% will be charged by the Auctioneers on all sales. A further levy of 1 % will be charged and paid to the British Limousin Cattle Society. No animal may be sold privately before being passed through the auction ring and FULL COMMISSION will be charged on the sale of any animal sold by private treaty after the auction. All such transactions MUST BE PASSED THROUGH THE AUCTIONEERS OFFICE.

STRAW: A limited amount of bedding straw will be provided by the Auctioneers free of charge. Additional straw, if required, may be purchased from the Auctioneers.

THE BRITISH LIMOUSIN CATTLE SOCIETY

Chief Executive: Iain Kerr

Avenue Q, National Agricultural Centre, Stoneleigh
Kenilworth, Warwickshire CV8 2RA

Tel: 02476 696500

Fax: 02476 696716

IT IS ESSENTIAL THAT THE FOLLOWING DOCUMENTS ACCOMPANY ANIMALS TO THE SALE PREMISES

and are handed to the Auctioneers upon the arrival to the market.

DECLARATION FORM (Subject to DEFRA Regulations) TOGETHER WITH THE NECESSARY CATTLE PASSPORT DOCUMENTATION

**ANY ANIMAL NOT IN POSSESSION OF THE REQUIRED
DOCUMENTS WILL NOT BE OFFERED FOR SALE.**

**PLEASE NOTE IT IS ILLEGAL TO MOVE ANY ANIMAL
WITHOUT THEIR RESPECTIVE PASSPORT DOCUMENTATION.**

IMPORTANT NOTICE TO PURCHASERS	
1	This Sale is held subject to recommended Conditions of Sale of the National Beef Association.
2	This Sale is held subject to the Special Terms and Conditions of Sale recommended for Sales of Pedigree Beef Cattle by the National Beef Association. The preparation of these Terms and Conditions has proved a lengthy and costly process and, in order to defray the legal and other costs involved, and to provide a continuing source of revenue to assist the Association in its vital work for pedigree cattle breeders, The Committee of the NBA have agreed that the following levy to be charged between the vendor and purchaser as follows – Bull Warranty - £3 to the vendor and £3 to the purchaser, Female Warranty - £2 to the vendor and £2 to the purchaser, Each amount will be plus VAT and be charged to the relevant vendor and purchaser accounts.

A User's Guide to Estimated Breeding Values

Contents

1. Estimated Breeding Values (EBVs)
2. How are EBVs Calculated?
3. Breeding Indexes
4. Accuracy
5. EBV Indexes
6. 200 Day Milk
7. How to Use EBVs and Indexes
8. Understanding Sale Cards and Catalogues
9. EBVs and Pedigrees Just a Click Away
10. Further Information

1. Estimated Breeding Values

Many factors influence the appearance and performance of a bull, so selecting 'by eye' alone can be misleading. The only accurate way of assessing the genetic potential of an animal (i.e. what it can pass on to its calves) is by using Estimated Breeding Values (EBV's) and Indexes. These are produced by Signet using a system known as BLUP (Best Linear Unbiased Predictor) and are calculated from animals' individual performance records as well as those of all their known relatives, where the effects of the environment (feeding, management, disease, climate etc) are sifted out to leave an estimate of the genetic value for each trait, as follows...

EBV	What Does the EBV Indicate?	Look for...
Birth Weight (kg)	Genetic potential for calf weight at birth	High negative EBVs if you want low calf birth weights
Calving Ease (%)	Ease with which a bull's progeny will be born	High positive EBVs if you want less assisted calvings
Maternal Calving Ease (%)	Ease with which a bull's daughters will calve	High positive EBVs if you want less assisted calvings
Gestation Length (days)	Genetic potential for gestation length	High negative EBVs if you want short gestation lengths
200 Day Milk (kg)	The maternal component of 200 day growth (i.e. the contribution that the milking and maternal abilities of a bull's daughters make towards their calves' growth at 200 days of age)	High positive EBVs if you want daughters to wean heavier calves
200 Day Weight (kg)	Genetic potential for growth from birth to 200 days of age	High positive EBVs if you want high growth rates to weaning
400 Day Weight (kg)	Genetic potential for growth from birth to 400 days of age	High positive EBVs if you want high growth rates to finishing
Muscle Depth (mm)	Genetic potential for muscularity and potential to increase lean meat yield	High positive EBVs if you want good calf conformation
Fat Depth (mm)	Genetic potential for leaner carcasses	High negative EBVs if you want to produce leaner carcasses or take calves to heavier weights without penalty for fatness
Age at 1st Calving (%)	Genetic potential for early sexual maturity	High negative EBVs for a greater proportion of heifers that hold to 1 st service

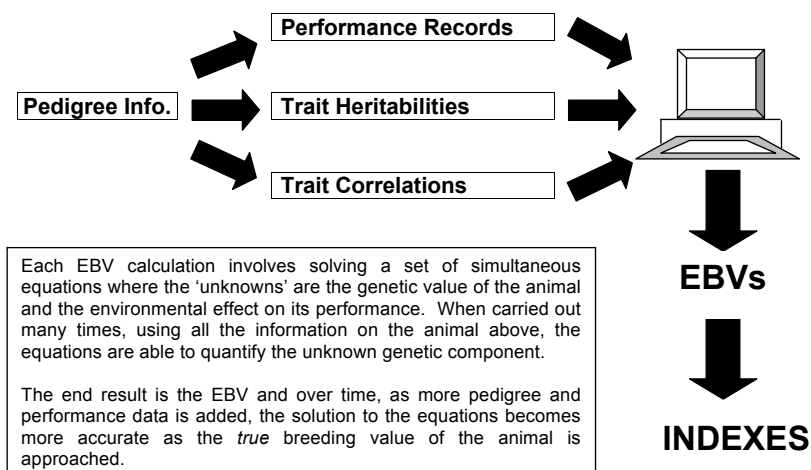
Longevity (years)	Genetic potential for long life in the breeding herd	High positive values for animals likely to remain in the herd for longer
Calving Interval (days)	Genetic potential for the time taken to get back in calf	High negative values to breed cows that get back in calf quickly
Docility (%)	Genetic potential for being calm when handled	High positive values for animals that are likely to be more calm when handled
Scrotal Circumference (cm)	Genetic potential for scrotal size. Linked to male serving capacity and puberty of daughters.	High positive values for animals with higher likely serving capacity and earlier maturing daughters.

2. HOW ARE EBVs CALCULATED?

EBVs are calculated using information from several sources:

- Measurements from the animal itself
- Measurements from the animal's herd mates (known as 'contemporaries' *)
- Measurements from the animal's relatives and their contemporaries
- The degree to which one trait influences another (known as a 'correlation' *)
- The degree to which each trait is passed on to the next generation (known as 'heritability' *)

* Terms explained below



Heritability and Correlations

Heritability

This is a term used to describe the strength with which traits are inherited and it varies depending on the trait in question. Generally:

- Traits associated with reproduction and survival have low heritabilities
- Milk production and early body size have medium heritabilities

- Later growth and carcase traits (i.e. fat and muscle) have relatively high heritabilities

Where traits with relatively good heritability are concerned, when something is known of the performance of one or both parents, then a prediction can be made as to how the offspring will perform and BLUP uses this 'knowledge' to enhance the accuracy of its EBV calculations.

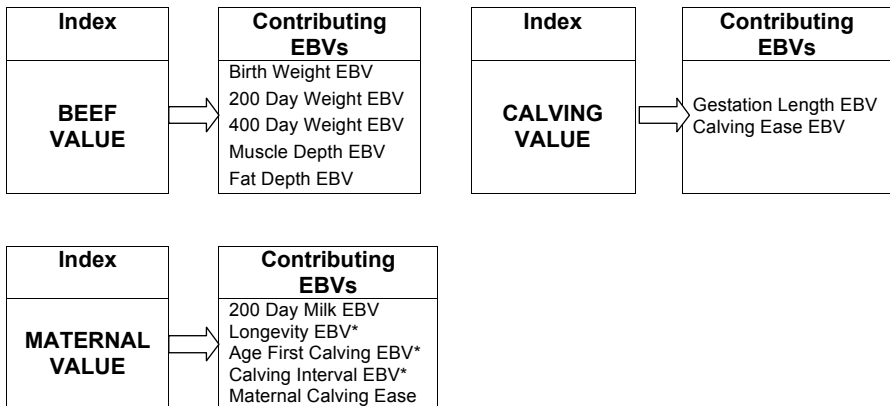
Correlations

This term describes the direction and strength of the association between two traits. For example, some traits are highly positively correlated, such as 200-Day Growth and 400-Day Growth, whilst others are highly negatively correlated, such as 400-Day Growth and Calving Ease. When something is known of one trait but perhaps not another, a prediction can be made based on what is known about the correlation between them. This again enhances the accuracy of the EBV in question and helps deal with situations where records for a trait are limited or unavailable.

3. BREEDING INDEXES

It is often desirable to select animals on the basis of more than one EBV. Indexes focus on specific breeding goals and combine the appropriate EBVs in to a single figure based on their relative economic value. This is widely regarded as the most efficient method of selecting on a number of traits at once.

Signet currently produces three beef Indexes, as follows:



* New EBVs not yet published at breed sales

When using an Index it is important that your breeding objective is broadly similar to that of the Index in question, otherwise you may unwittingly change aspects of your herd that you did not necessarily want to.

4. ACCURACY

An Accuracy Value is published next to every EBV and Index. Accuracy Values are expressed as a % and indicates the quantity and quality of records used to produce the EBV or Index.

Several things affect the accuracy of an EBV or Index, namely:

- The amount of information on the trait from the animal itself
- The amount of information on the trait from relatives of the animal

- The heritability of the trait concerned
- The amount of information from the animal and its relatives on traits correlated with the trait of interest and the strength of the correlations which vary between different traits.
- The number of herd mates from the same management group recorded ('contemporaries').

Scaling for Low Accuracy

An important feature of BLUP EBVs is that they are scaled to account for the amount of performance information on which they are based. EBVs based on very little information get adjusted towards the average EBV and this adjustment applies to both high and low EBVs.

This prevents animals gaining very high or very low EBVs as a result of a few very good or very poor records and is designed to protect the user from risk. The more information available on an animal and its relatives, the less the EBVs are adjusted.

Accuracy Values indicate how similar an animals' EBVs are to its true breeding value. They predict the likelihood that an animals EBVs will change over time

5. EBV INDEXES

To aid interpretation at breed sales, all Limousin EBVs are presented in index form based around an average of 100 with an approximate range of 70 to 130. For example:

	Calving Value	200 Day Milk (kg)	200 Day weight (kg)	400 Day weight (kg)	Muscle Depth (mm)	Fat Depth (mm)	Beef Value
EBV	LM -4C	-1	+25	+34	+3.40	-0.20	LM +23
Accuracy %	85	54	75	73	68	66	73
Index	77	98	112	106	111	111	108

6. MATERNAL EBVs

Many commercial and pedigree producers are breeding their own female replacements and need to identify bulls with superior maternal attributes.

200 Day Milk EBV

One of the most important maternal EBVs is the 200 Day Milk EBV – indicating the degree to which 200 day milk is influenced by maternal performance – e.g. milkiness and general mothering ability.

As well as predicting breeding potential for growth to 200 day of age, the 200 day weight can be used to assess an animals breeding potential for milking ability.

Consider the performance of the grand-offspring of a bull. The weights of all of his grandprogeny are influenced by his growth genes, but only those produced by his daughters are affected by his genes for milk.

If the grandprogeny produced by his daughters are constantly heavier than those produced by his sons, then this is likely to be due to his superior genes for milk production.

Interpretation

A bull with an EBV of +4 for 200-Day Milk is expected to produce heifer calves which will have above average maternal characteristics leading to their calves being 2kg heavier at 200-days than calves from heifers sired by a bull with an EBV of 0.

Maternal Calving Ease

This EBV predicts how easily a bull's daughters will calve. It should not be confused with the Calving Ease EBV which predicts how easily a bull's progeny will be born.

The Maternal Calving Ease EBV is calculated from calving records and is expressed as a % indicating the proportion of unassisted calvings.

Interpretation

A bull with a Maternal Calving Ease EBV of 2% will produce females that have 1% more unassisted calvings than a bull with an EBV of 0.

EBVs are also produced for: Longevity, Age at First Calving and Calving Interval but these are not yet published at breed sales.

7. How to Use EBVs and Indexes

EBVs are expressed in the same unit as the recorded trait (e.g. kg for 400-Day Weight, mm for Muscle Depth etc) and are relative to a Breed Benchmark, which is updated and published annually.

Limousin Breed Benchmark 2013

Trait	BOTTOM			AVERAGE	TOP		
	1%	10%	25%		25%	10%	1%
Gestation Length (days)	3.7	1.9	1.2	0.5	-0.2	-1.0	-2.6
Calving Ease (%)	-8.4	-4.7	-3.3	-2.3	-1.1	-0.3	1.0
Maternal Calving Ease	-1.0	-0.2	0.2	0.6	1.0	1.2	1.7
Birth Weight (kg)	3.4	2.4	1.9	1.3	0.9	0.4	-0.4
Calving Value	LM-4C	LM-2C	LM-1C	LM0C	LM1C	LM2C	LM4C
200-Day Milk (kg)	-6	-3	-2	-1	1	2	5
200-Day Weight (kg)	-4	6	12	17	25	32	45
400-Day Weight (kg)	-4	13	22	30	43	55	77
Muscle Depth (mm)	-0.7	0.6	1.2	2.1	3.1	4.1	6.0
Fat Depth (mm)	0.4	0.1	0.0	-0.1	-0.2	-0.3	-0.6
Beef Value	LM6	LM13	LM16	LM20	LM26	LM31	LM41
Maternal Value	LM-21V	LM-9V	LM-3V	LM4V	LM9V	LM16V	LM28V

When using EBVs it is important to remember that although they can be compared between herds, they can not be compared between breeds.

Using the Breed Benchmark, compare and contrast the EBVs and Indexes of the two young bulls below.

Bull A

Analysis Date	Calving Value	200 Day Milk (kg)	200 Growth (kg)	400 Growth (kg)	Muscle Depth (mm)	Fat Depth (mm)	Beef Value
24/10/2008	LM1C	4	28	42	4.1	-0.1	LM27
EBV							
Accuracy %	57	42	72	69	69	62	63
Index	100	120	122	117	128	103	120

100 day wt	200 day wt	300 day wt	400 day wt	500 day wt	Scanned
118	253	378	556	710	Yes

Signet
PBC's Signet Breeding Services

Bull B

Analysis Date	Calving Value	200 Day Milk (kg)	200 Growth (kg)	400 Growth (kg)	Muscle Depth (mm)	Fat Depth (mm)	Beef Value
24/10/2008	LM4C	-5	30	52	2.0	0.3	LM25
EBV							
Accuracy %	59	43	73	68	66	60	64
Index	120	86	124	125	107	76	116

100 day wt	200 day wt	300 day wt	400 day wt	500 day wt	Scanned
126	256	385	568	755	Yes

Signet
PBC's Signet Breeding Services

- Each bull has been fully weight recorded (i.e. they both have a complete set of 100-day adjusted weights), scanned (the box says 'Yes') and possesses satisfactory accuracy figures, given their age.
- Both bulls have EBVs for growth and carcass traits that are above the breed average, but in several ways their characteristics differ:
 - > Bull A has a higher Muscle Depth EBV
 - > Bull B has the highest EBVs for growth rate (weight) EBVs
 - > Bull A has a 200-Day Milk EBV in the Top10% of the breed
 - > Bull B has a Calving Value in the Top 10% of the breed

Bull A would be the most suitable out of the two for a unit where conformation takes high priority. The high 200-Day Milk Weight EBV would also make it suitable for herds where female replacements are retained for breeding.

The high Calving Value of Bull B indicates that it would be more suitable for mating to heifers. It could also be used in herds where a priority is to improve growth.

Remember

When trying to establish just how much influence a bull will pass on to his progeny it is important to remember to halve the value of the EBV, since the other half of a calf's genes comes from the cow.

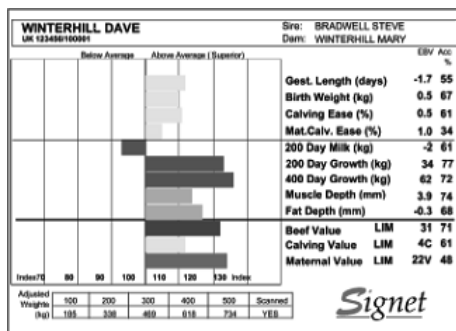
For example, a bull with a 400-Day Growth (weight) EBV of +62 is estimated to have the genetic potential to be 62kg heavier at 400 days of age compared to a bull with an EBV of 0.

Based on their sire's genetics, his calves would be expected to be 31kg heavier at that age when compared to calves by a bull with an EBV of 0, since they only inherit half of their growth genes from their sire (the other half coming from their dam).

8. UNDERSTANDING SALE CARDS AND CATALOGUES

Estimated Breeding Values on Sale Cards

EBVs and Indexes are produced on sale cards as shown below:



Bars that lie to the right of the central line indicate the EBV/Index is above breed average (and the further it is to the right, the higher above breed average it is). Similarly, bars to the left of the central line indicate the EBV/Index is below breed average (and the further to the left it is, the further below average it is).

In sale catalogues, the same figures are produced in table format similar to the examples of Bull A and Bull B above. The EBV Index (bottom line) will quickly indicate where values lie in relation to the breed average. The Breed Benchmark printed in the front pages of the catalogue will allow further refinement of this.

9. EBV and PEDIGREE INFORMATION JUST A CLICK AWAY

EBV and pedigree information on all Limousin cattle are just a few internet clicks away...

Step 1: Click the 'Basco Online Herd Book' button on the Limousin Society homepage (www.limousin.co.uk)

Step 2: In the 'All Breeds Quick Search' box type the name or ear number of the animal you are interested in or click on the 'Breeder Search' button to look at all animals belonging to or bred by a particular breeder.

The site will then tell you the animal's owner/breeder details, its EBVs, its pedigree and list its progeny with full links to all of their information.

10. FURTHER INFORMATION

For further information, please contact Alison Glasgow, British Limousin Cattle Society on telephone 01721 730664, e-mail alison@limousin.co.uk or visit the BLCS web site www.limousin.co.uk

Sale Day Minimum Qualifying Weights CARLISLE - 14 June 2013

<i>Date</i>	<i>Days Old</i>	<i>Minimum Weight (Kg)</i>	<i>Date</i>	<i>Days Old</i>	<i>Minimum Weight (Kg)</i>
15/04/2012	425	535	12/11/2011	580	702
10/04/2012	430	541	07/11/2011	585	707
05/04/2012	435	546	02/11/2011	590	712
31/03/2012	440	552	28/10/2011	595	717
26/03/2012	445	557	23/10/2011	600	723
21/03/2012	450	563	18/10/2011	605	728
16/03/2012	455	568	13/10/2011	610	733
11/03/2012	460	574	08/10/2011	615	738
06/03/2012	465	579	03/10/2011	620	743
01/03/2012	470	585	28/09/2011	625	748
25/02/2012	475	590	23/09/2011	630	753
20/02/2012	480	596	18/09/2011	635	758
15/02/2012	485	601	13/09/2011	640	763
10/02/2012	490	607	08/09/2011	645	768
05/02/2012	495	612	03/09/2011	650	773
31/01/2012	500	618	29/08/2011	655	778
26/01/2012	505	623	24/08/2011	660	783
21/01/2012	510	628	19/08/2011	665	788
16/01/2012	515	633	14/08/2011	670	793
11/01/2012	520	639	09/08/2011	675	798
06/01/2012	525	644	04/08/2011	680	803
01/01/2012	530	649	30/07/2011	685	808
27/12/2011	535	654	25/07/2011	690	813
22/12/2011	540	660	20/07/2011	695	818
17/12/2011	545	665	15/07/2011	700	823
12/12/2011	550	670	10/07/2011	705	827
07/12/2011	555	675	05/07/2011	710	831
02/12/2011	560	681	30/06/2011	715	835
27/11/2011	565	686	25/06/2011	720	839
22/11/2011	570	691	20/06/2011	725	843
17/11/2011	575	696	15/06/2011	730	847

Farmers Guardian

Main Sponsors

**The biggest
classified section
in the marketplace**

Over 2,000 items advertised every week!

■ To Advertise call **0800 278 9928** or visit
farmersguardian.com/classified

On sale every Friday at your newsagent

BRITISH LIMOUSIN CATTLE SOCIETY HERD HEALTH DECLARATIONS AT SALES

Explanatory Notes

Introduction

Following the Herd Health Initiative introduced by the Society in 2005, a second major health step saw the introduction of Herd Health Declarations and information at Collective Limousin pedigree Sales commencing with the 2007 May Sale at Carlisle and thereafter from 2008 at all official Collective Society Sales.

A service to customers and breeders

The principal aim of this new step is to standardise herd health declarations and information presented in order to provide both members and customers alike with clear, accurate herd health information at the point of sale and within the given sale catalogue. As such we anticipate it will be attractive and informative for customers and will again further raise the level of buyer confidence.

How do the Herd Health Declarations work?

The sale entry form for vendors was accompanied by a Herd Health Declaration form asking vendors simple questions regarding for example: TB status; membership of CHECS (www.checs.co.uk) health schemes (Advance Cattle Health Scheme, AFBI Cattle Health Scheme, Herdsure Cattle Health Improvement Service, HiHealth Herdcare, NML Herdwise, Premium Cattle Health Scheme, Shetland Animal Health Scheme) and Johne's, BVD, IBR and Lepto status. This form is shown on the opposite page.

How is this Herd Health Declaration information presented at the sale?

A condensed version of the Herd Health Declaration information appears in the Vendors' Index at the front of the sale catalogue.

What other health information may be displayed?

By definition this is a Herd Health Declaration not an individual animal declaration. Vendors are however encouraged to apply to their respective CHECS health scheme for individual animal health cards for display on pens.

IMPORTANT NOTE: For an individual animal's test results, or vaccination histories, regarding BVD, IBR, Lepto or Johne's, these are permitted above the sale pens **only** upon presentation of a signed veterinary declaration to verify that the animal concerned has had a clear test.

What does Accredited Free for Johne's mean?

If a herd has had two clear annual Johne's tests, it is declared as being Accredited Free for Johne's provided there has been no history of Johne's in the herd. If the latter is the case, then in this instance three clear tests are required. The date the herd has been Accredited Free since is also indicated on the Herd Health Declaration cards.

Health footnotes under a given animal in the sale catalogue

For reasons of practicality, no health information is to be put in the catalogue footnotes by vendors. Buyers should refer to the Vendors' Index, the individual animal cards displayed on pens or to the vendors themselves for all health-related information.

Is the Herd Health Declaration compulsory?

For "premier" collective sales (Carlisle February, May, October & December; Stirling February & October; Brecon May & November)) the Herd Health Declaration is compulsory. For reasons of clarity and to provide purchasers with the most accurate information available, vendors are required to complete this at time of entry.

Although not compulsory at other collective sales, the Society has recommended that vendors complete the Herd Health Declaration. This information will then appear in the Vendors' Index within the catalogue. Where a member has chosen not to complete the Herd Health Sale Declaration, it will simply say 'No Herd Health Declaration.'

Will the auctioneers continue to give health information from the box at the point of sale?

The Society has requested that no declarations on health information be given by the auctioneer during the sale. Again, the sole purpose of this is to avoid confusion and to try and ensure that the information provided is done accurately, fairly and in a standardised format in the catalogue. This point has been agreed with the auctioneers.

What if a vendor is selling an animal/s that he did not breed?

Vendors have still been requested to fill in the Herd Health Sale Declaration accordingly. Prospective customers are advised to speak to vendors directly to acquire accurate health information on animals offered but not bred by the seller.

Feedback & more information

The Society welcomes members' and customers' feedback on the Herd Health Declarations as it is expected that this will be an evolving initiative. If you have further questions, please speak to the Society representatives, Iain Kerr & Richard Saunders, or the Auctioneers.



BRITISH LIMOUSIN CATTLE SOCIETY OFFICIAL SALE HERD HEALTH DECLARATION

HOLDING LETTERS: _____ HERD PREFIX _____

NAME: _____

ADDRESS: _____

SALE DATE: _____

TB	
DATE HERD LAST TESTED CLEAR:	TESTING INTERVAL <input type="checkbox"/> 1 Year <input type="checkbox"/> 3 Years <input type="checkbox"/> 2 Years <input type="checkbox"/> 4 Years

HEALTH SCHEME.

ARE YOU A MEMBER OF A CHeCS CONTROLLED HEALTH SCHEME Yes No

IF YES, TICK WHICH ONE

SAC Premium Cattle Health Scheme HI Health Herdcare NML Herdwise

VLA Herdsure NWL Advance Cattle Health Scheme

AFBI Cattle Health Scheme Shetland Animal Health Scheme

IF YES, TICK WHICH DISEASES APPLY JOHNES BVD IBR LEPTO

ALL VENDORS, WHETHER IN CHeCS SCHEMES OR PRIVATELY TESTING, SHOULD COMPLETE THE FOLLOWING:

	Accredited free (CHeCS members only)	Herd Testing	Vaccinating
BVD	<input type="checkbox"/> Yes <input type="checkbox"/> No If yes, since:	<input type="checkbox"/> Yes <input type="checkbox"/> No If yes, since:	<input type="checkbox"/> Yes If yes name of <input type="checkbox"/> No Vaccine: If yes, since:
IBR	<input type="checkbox"/> Yes <input type="checkbox"/> No If yes, since:	<input type="checkbox"/> Yes <input type="checkbox"/> No If yes, since:	<input type="checkbox"/> Yes If yes name of <input type="checkbox"/> No Vaccine: If yes, since:
LEPTO	<input type="checkbox"/> Yes <input type="checkbox"/> No If yes, since:	<input type="checkbox"/> Yes <input type="checkbox"/> No If yes, since:	<input type="checkbox"/> Yes If yes name of <input type="checkbox"/> No Vaccine: If yes, since:
JOHNES	<input type="checkbox"/> Yes <input type="checkbox"/> No If yes, since:	<input type="checkbox"/> Yes <input type="checkbox"/> No If yes, since:	<input type="checkbox"/> Yes If yes name of <input type="checkbox"/> No Vaccine: If yes, since:

Declaration:

I certify that the above information is correct as at date of entry and hereby give permission for my CHeCS provider to confirm the above information

Signed: _____ Name: _____ Date: _____

The British Limousin Cattle Society, National Agricultural Centre, Stoneleigh, CV8 2RA. Tel 02476-696500

Disclaimer: The health information above is as supplied by, or on behalf of the breeder.
The responsibility for the accuracy of the information rests solely with the breeder and not with the British Limousin Cattle Society Ltd.

Vendors' Index

Baillie, D	CALLA	14
Calla Farm, Carnwath, Lanark, ML11 8LH		
<ul style="list-style-type: none"> - Currently on a 4 year TB testing interval - Member of a CHeCS controlled health scheme for Johnes & BVD - Accredited free for BVD since 2012 - Routinely vaccinating against BVD, IBR & Lepto 		
Barker Farming Partnership	TANCREDRANGE	20,32
Tancred Grange, Scorton, Richmond, DL10 6AB		
<ul style="list-style-type: none"> - Currently on a 4 year TB testing interval - Member of a CHeCS controlled health scheme for Johnes & BVD - Johnes Risk Level 2 		
Bell, TW & AN	WANTHWAITE	38
Hill Top Farm, St Johns in the Vale, Keswick, Cumbria, CA12 4TS		
No Herd Health Declaration		
Bennett JM & MJ	THREAPHURST	40
Clough House Farm, Threaphurst Lane, Hazel Grove, Stockport, SK7 6NN		
<ul style="list-style-type: none"> - Currently on a 4 year TB testing interval - Member of a CHeCS controlled health scheme for Johnes & BVD - Accredited free for Johnes and BVD - Routinely vaccinating against BVD, IBR & Lepto 		
Blenkhorn, E	ELDERBERRY	54
Elder Farm, Willitof, Goole, East Yorkshire, DN14 7NS		
<ul style="list-style-type: none"> - Currently on a 4 year TB testing interval - Member of a CHeCS controlled health scheme for Johnes, BVD, IBR and Lepto - Accredited free for BVD since 2008 - Routinely vaccinating against BVD since 2009 		
Bloom, JCG	SCORBORO	19,53
Decoy Farm, Scarborough, Driffield, East Yorkshire, YO25 9BB		
<ul style="list-style-type: none"> - Currently on a 4 year TB testing interval - Member of a CHeCS controlled health scheme for Johnes, BVD & Lepto - Accredited free for Johnes & BVD since 2012 		
Breconside Farming Partnership	BRECONSIDE	33
Breconside Farm, Moffat, Dumfries, DG10 9LX		
<ul style="list-style-type: none"> - Currently on a 4 year TB testing interval - Member of a CHeCS controlled health scheme for Johnes and BVD - Accredited free for BVD since 2011 - Johnes Risk Level 3 - Routinely vaccinating against BVD since 2011 		
Burnett, J & Sons	SPITTALTON	39,42,43
Upper Spittalton, Blair Drummond, Stirling, FK9 4XE		
<ul style="list-style-type: none"> - Currently on a 4 year TB testing interval - Member of a CHeCS controlled health scheme for Johnes & BVD - Accredited free for Johnes since 2002 - Routinely vaccinating against BVD since 2012 		
Cheshire, T	PARKHOUSE	22,31
Gourneix, 23130 St Loup, France,		
No Herd Health Declaration		

Common, J & Son	CROSSDYKES	15,24
Crossdykes, Lockerbie, Dumfries, DG11 2QL		
- Currently on a 4 year TB testing interval		
- Member of a CHeCS controlled health scheme for Johnes & BVD		
- Accredited free for BVD since 2006		
Cruickshank N & E	NORMANDE	5,6,9
Cowford Farm, Cleghorn, Lanark, ML11 8NR		
No Herd Health Declaration		
Fieldson, JW & MC	FIELDSON	36,41,44,47,49
Poplar Farm, Corringham, Caisborough, Lincolnshire DN21 5QL		
- Currently on a 4 year TB testing interval		
- Member of a CHeCS controlled health scheme for Johnes & BVD		
- Accredited free for BVD		
- Johnes Risk Level 2		
- Routinely vaccinating against BVD, IBR & Lepto		
Fletcher, P	SIDDALL	51,57
Top o' th' Hill Farm, Birch, Heywood, Lancashire, OL10 2QB		
- Currently on a 4 year TB testing interval		
- Member of a CHeCS controlled health scheme for Johnes, BVD, IBR & Lepto		
- Accredited free for BVD		
- Routinely vaccinating against IBR & Lepto		
Gibson, JS & Son	THORNTONTOWER	3
Thornton Tower, Newbrough, Hexham, NE47 5AN		
- Currently on a 4 year TB testing interval		
- Member of a CHeCS controlled health scheme for Johnes		
- Routinely vaccinating against BVD since 2003		
Hall, RL	WALGATE	48
2 Willow Hill, Wintringham, Malton, N Yorkshire YO17 8HY		
- Currently on a 4 year TB testing interval		
- Member of a CHeCS controlled health scheme for Johnes, BVD, IBR & Lepto		
- Accredited free for BVD since 2012		
- Johnes Risk Level 1		
Henderson, JE & Sons	BURNDALE	10
Burntongues, Allendale, Hexham, Northumberland, NE47 9NR		
- Currently on a 4 year TB testing interval		
- Member of a CHeCS controlled health scheme for Johnes & BVD		
- Accredited free for BVD since 2011		
Hickson, WJ	BECK	1,2,12
Knarrside Farm, Skipton Old Road, Colne, Lancashire, BB8 7EW		
No Herd Health Declaration		
Hutton, GL	CLOUGHHEAD	35
Setmabanning, Threlkeld, Keswick, Cumbria, CA12 4TT		
No Herd Health Declaration		
Illingworth, Mr SD	GLENROCK	29
Howgillside, Eaglesfield, Lockerbie, DG11 3AF		
No Herd Health Declaration		
Jones, MT	BAILEA	25,26,27,28
Bailea, Heol Senni, Brecon, Powys, LD3 8ST		
No Herd Health Declaration		

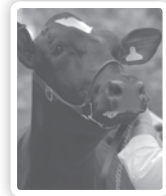
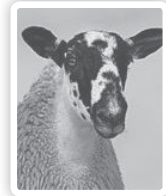
Kitching, RM & HJ	DALEBOTTOM	13,37,45
Dalebottom Farm, Naddle, Keswick, Cumbria, CA12 4TF		
No Herd Health Declaration		
Lewis, RM & HJ	REDLAND	21,34
Nash Farm, Milson, Cleobury Mortimer DY14 0AY		
- Currently on a 1 year TB testing interval		
- Member of a CheCS controlled health scheme for Johnes, BVD, IBR & Lepto		
- Routinely vaccinating against BVD		
Logan, Messrs J	HOMEBYRES	16
Humebyres, Kelso, Roxburghshire, TD5 7TL		
- Currently on a 4 year TB testing interval		
- Member of a CheCS controlled health scheme for Johnes & BVD		
- Accredited free for BVD since 2007		
- Routinely vaccinating against BVD since 2006		
McInnes, A	MCINNES	17,23
Covick Farm, Thorne Road, East Cowford, Goole, DN14 8SY		
- Currently on a 4 yearly TB testing interval. Last clear test 08/12/2012		
- Member of a CheCS controlled health scheme for Johnes, BVD, IBR & Lepto		
- Herd testing for Johnes, BVD, IBR & Lepto since 2010		
- Accredited free of BVD, IBR & Lepto since Jan 2013		
- Johnes Risk Level 2 Herd		
- Sale animals vaccinated for BVD 09/01/13 and 30/01/13		
McKeen, JR	HARTLAW	8
Hartlaw, Silloth, Wigton, Carlisle, CA7 4PH		
No Herd Health Declaration		
Norman, E & E	NORMAN	30
Little Orton Farm, Little Orton, Carlisle, Cumbria CA5 6EP		
- Currently on a 4 year TB testing interval		
- Member of a CheCS controlled health scheme for Johnes and BVD		
- Accredited free for BVD		
- Routinely vaccinating against BVD & IBR		
Priestley, SM	BRONTEMOOR	4,7,11,18
Cracrop Farm, Kirkcabeck, Brampton, Cumbria, CA8 2BW		
- Currently on a 4 year TB testing interval		
- Member of a CheCS controlled health scheme for Johnes & BVD		
- Routinely vaccinating against BVD since 2005		
Ridley, Messrs	HALTCLIFFE	50,55,56
Haltcliffe, Keskey-new-Market, Cumbria, CA7 8JU		
- Currently on a 4 year TB testing interval		
- Member of CheCS controlled health scheme for Johnes & BVD		
- Accredited free for BVD		
- Routinely vaccinating against BVD		
Sayer Jnr, A	WILLOWVALE	46
Willow Farm, Sandon Road, Hilderstone, Staffordshire, ST15 8SL		
- Currently on a 1 year TB testing interval		
- Member of a CheCS controlled health scheme for Johnes		
- Routinely vaccinating against BVD		



HARRISON & HETHERINGTON
Farmstock Auctioneers, Brokers & Valuers

The UK's Leading Livestock Marketing Company

- Seven Sale Centres
- Pedigree & Commercial Livestock
- Official Society Sales of Beef, Dairy & Sheep
- Tractors, Machinery & Commercial Vehicles
- Specialist Livestock Sales, Equine & Events
- Professional Valuations



01228 406200
harrisonandhetherington.co.uk
Borderway Mart, Carlisle CA1 2RS

Lot W J Hickson
1 BECK GUSTAV
 HGV11-004 Born 21/01/11 UK 180867/200283 Got by AI
 ggs. DAIM 19-88-005-833
 gs. GLENROCK ONSLOW IE98-445
 ggd. RACHELS LESLEY WT95-780

Sire *RAINBOW SIMON WIM01-013
 ggs. HARTSIDE HENSINGHAM TW92-545
 gd. ROMBALDS NAN RCE97-061
 ggd. ROMBALDS JENIFER RCE94-016
 ggs. LASCARD 12-95-160-961
 gs. GOLDIES OSWALD GS98-064
 ggd. GOLDIES LULU GS95-015

Dam BECK BROCKEY HGV06-013
 ggs. BECK PADNEY HGV99-005
 gd. BECK TEAL HGV02-006
 ggd. ABLETTE 19-85-004-802

ABLETTE (*3dam*) bred until she was 19 years old. **Beck Teal** (*gdam*) has natural shape inherited from her sire **Beck Padney**.

Lot W J Hickson
2 BECK GIANT
 HGV11-289 Born 09/04/11 UK 180867/100289 Got by AI
 ggs. NODULEUX 35-77-008-005
 gs. VILLY 19-84-008-766
 ggd. TUBEREUSE 19-82-002-189

Sire *HIGHLANDER 16-92-111-209
 ggs. VERCORS 87-84-006-220
 gd. BARONNE 16-86-111-362
 ggd. UNIQUE 16-83-110-511
 ggs. BROADMEADOWS CANNON CAVC-031
 gs. RONICK HAWK DY92-026
 ggd. RONICK ESTHER DYE-040

Dam BECK DOREEN HGV08-010
 ggs. GOLDIES OSWALD GS98-064
 gd. BECK ANDREA HGV05-003
 ggd. BECK PUFFIN HGV99-012

BECK DOREEN (*dam*) is a large cow whose pedigree goes back to **Sirocco** and **Fieldhouse Bedelia**. **Beck Andrea** (*gdam*) has plenty of natural shape.

Lot J S Gibson & Son

3 THORNTONTOWER GLADIATOR

GIS11-002 Born 02/05/11 UK 107199/201578 Got by AI

ggs. BAMBINO 19-86-005-742

gs. MAS DU CLO 23-96-032-213

ggd. COSETTE 23-87-051-003

Sire USKUDAR 19-31-412-178

ggs. JOGUI 19-94-007-314

gd. PIGALLE 19-30-218-607

ggd. JULIENNE 19-94-007-024

ggs. BAILEA OLYMPIA JAG98-071

gs. RONICK SENORA DY01-184

ggd. RONICK ONORA DY98-405

Dam THORNTONTOWER CARRIE GIS07-005

ggs. DAIM 19-88-005-833

gd. GREENWELL NIEVE NK97-029

ggd. GREENWELL JEWEL NK94-012

Lot JM & SM Priestley

4 BRONTEMOOR GALWAY

PCI11-025 Born 22/05/11 UK 126538/301036

ggs. LEO 23-95-071-399

gs. NENUPHAR 87-97-011-143

ggd. GIROFLEE 87-91-000-077

Sire ELITE BENN IE221062720558

ggs. NEPTUNE 87-97-002-840

gd. USABELBEN 36-15-044-843

ggd. MEXICAINE 36-96-029-650

ggs. HEROS 36-92-005-318

gs. PROCTERS SUBARU PFD01-096

ggd. MARNHULL JOJO MES94-0102

Dam BRONTEMOOR BELLISSIMO PCI06-092

ggs. HALTCLIFFE OLYMPUS RP98-077

gd. BRONTEMOOR VIENNA PCI04-005

ggd. BRONTEMOOR NANCY PCI97-005

Signet Recorded Weights	100	200	300	400	500			
Last BLUP'd 10/03/2013	185	326	464	603	722			
MLC	C E(%)	C V	200M(kg)	200G(kg)	400G(kg)	Fat(mm)	MD(mm)	BV
Data EBV	-6.0	LM-3C	-1	+27	+45	-0.3	+3.8	LM+31
Acc %	59	61	52	74	75	43	66	74
BLCS Index	78	78	99	109	108	112	112	114

Lot Cruickshank Normande
5 NORMANDE GERRY
 CAX11-969 Born 29/05/11 UK 560770/400969
 ggs. BAMBINO 19-86-005-742
 gs. MAS DU CLO 23-96-032-213
 ggd. COSETTE 23-87-051-003

Sire *MOLOSKEY CLAUS IE131477840508
 ggs. GEANT 19-91-000-217
 gd. MOLOSKEY NICAL MOLN-008
 ggd. KNOCKERRA HANNAH KCAH-001
 ggs. IONESCO 36-93-000-206
 gs. RAVAGEUR 19-30-828-456
 ggd. JOUEUSE 87-94-004-501

Dam NORMANDE BERNICE CAX06-590
 ggs. RAKE TERENCE JKT-020
 gd. NORMANDE INGENNUE CAX93-025
 ggd. NORMANDE EMPRESS CAXE-026

Lot Cruickshank Normande
6 NORMANDE GLENFIDDICH
 CAX11-978 Born 12/06/11 UK 560770/600978
 ggs. BAMBINO 19-86-005-742
 gs. MAS DU CLO 23-96-032-213
 ggd. COSETTE 23-87-051-003

Sire *MOLOSKEY CLAUS IE131477840508
 ggs. GEANT 19-91-000-217
 gd. MOLOSKEY NICAL MOLN-008
 ggd. KNOCKERRA HANNAH KCAH-001
 ggs. NESTOR 19-97-013-433
 gs. ARDNACRUSHA UTHMAN HRWU-254
 ggd. LUSTRE PELL-141

Dam NORMANDE DELLA CAX08-672
 ggs. TALENT 23-82-004-036
 gd. ALDWYCK FENELLA BAMF-046
 ggd. TANHILL UDA FBU-182

Signet Recorded Weights	100	200	300	400	500			
Last BLUP'd 10/03/2013	0	0	470	584	719			
MLC	C E(%)	C V	200M(kg)	200G(kg)	400G(kg)	Fat(mm)	MD(mm)	BV
Data EBV	-5.9	LM-3C	-2	+27	+26	0	+5.1	LM+22
Acc %	48	49	44	72	75	67	69	72
BLCS Index	79	80	93	109	94	92	123	99



Swallow Carlisle is happy to offer a preferred rate of **£55** Bed and Breakfast per room per night
Please quote H&H when booking

With Free Car Parking, Free Wi-Fi and

complimentary use of the Leisure Club with Swimming Pool, Sauna, Steam Room, Jacuzzi and Gymnasium



A Great Venue for Weddings from **£2,013**

Family events, Sunday Lunch

Funerals respectfully catered for

Tribute Nights throughout the Year

Christmas Parties and Residential packages now available

Why not join the Swallow Hilltop Leisure Club ?

Special price from **£99** per person for 6 months membership. To qualify for this rate, please present a copy of this advertisement when joining quoting ref: HTP/HH00413



To make a booking please call 01228 529255 or email events.hilltop@crerarmgmt.com

Swallow terms and conditions apply. All rates are subject to availability.

Lot	JM & SM Priestley									
7	BRONTEMOOR GENIUS									
	PCI11-037		Born 20/06/11							UK 126538/101048
			ggs. LEO 23-95-071-399							
			gs. NENUPHAR 87-97-011-143							
			ggd. GIROFLEE 87-91-000-077							
Sire	ELITE BENN IE221062720558									
			ggs. NEPTUNE 87-97-002-840							
			gd. USABELBEN 36-15-044-843							
			ggd. MEXICAINE 36-96-029-650							
			ggs. HEROS 36-92-005-318							
			gs. PROCTERS SUBARU PFD01-096							
			ggd. MARNHULL JOJO MES94-0102							
Dam	BRONTEMOOR CLOUD PCI07-019									
			ggs. HALTCLIFFE OLYMPUS RP98-077							
			gd. BRONTEMOOR SKYE PCIO1-014							
			ggd. BRONTEMOOR ISLAY PCI93-008							
Signet Recorded Weights	100	200	300	400	500					
Last BLUP'd 10/03/2013	178	311	451	573	704					
MLC	C E(%)	C V	200M(kg)	200G(kg)	400G(kg)	Fat(mm)	MD(mm)		BV	
Data EBV	-8.6	LM-5C	-2	+26	+40	-0.3	+3.9		LM+28	
Acc %	59	62	53	74	75	45	67		74	
BLCS Index	62	67	93	108	104	112	113		109	

Lot	John R McKeen									
8	HARTLAW GRENADIER									
	MUE11-522	Born 30/06/11		UK 100708/700522						Got by AI
	<i>Embryo Calf</i>									
			ggs. NEUF 22-97-004-114							
			gs. USTY 22-55-672-037							
			ggd. SAVANE 22-55-671-890							
Sire	*ATTIRANT 23-06-751-274									
			ggs. MAS DU CLO 23-96-032-213							
			gd. SUPERBE 23-02-773-558							
			ggd. NITOUCHE 23-97-060-279							
			ggs. GALOPIN 87-91-050-832							
			gs. LINO 87-95-004-426							
			ggd. ALLUMETTE 87-85-003-591							
Dam	HARTLAW VENUS MUE04-119									
			ggs. GASTON 87-91-001-521							
			gd. MAMELLE 19-96-019-887							
			ggd. CIBLE 19-87-000-551							

Lot Cruickshank Normande
9 NORMANDE GALL

CAX11-988

Born 09/07/11

UK 560770/200988

ggs. BAMBINO 19-86-005-742

gs. MAS DU CLO 23-96-032-213

ggd. COSETTE 23-87-051-003

Sire MOLOSKEY CLAUS IE131477840508

ggs. GEANT 19-91-000-217

gd. MOLOSKEY NICAL MOLN-008

ggd. KNOCKERRA HANNAH KCAH-001

ggs. RONICK ICEMAN DY93-018-FOT

gs. ROUGHLEY SOLOMON SBC01-016

ggd. ROUGHLEY LAVISH SBC95-033-FOT

Dam NORMANDE VARINA CAX04-388

ggs. FILIP 02-90-150-010

gd. NORMANDE NAZARINA CAX97-033

ggd. NORMANDE EMPRESS CAXE-026

Signet Recorded Weights	100	200	300	400	500			
Last BLUP'd 10/03/2013	0	0	503	634	0			
MLC	C E(%)	C V	200M(kg)	200G(kg)	400G(kg)	Fat(mm)	MD(mm)	BV
Data EBV	-5.8	LM-2C	-2	+18	+16	0	+4.1	LM+18
Acc %	49	48	45	72	75	67	69	72
BLCS Index	80	82	93	98	87	92	114	93

Lot J E Henderson & Sons

10 BURNDALE GERBERUS

HHP11-008

Born 11/07/11

UK 106964/200849

Got by AI

ggs. OXYGENE 12-98-171-453

gs. WILODGE TONKA WEY02-002

ggd. WILODGE MECLAIRE WEY96-022

Sire *WILODGE CERBERUS WEY07-010

ggs. BROADMEADOWS CANNON CAVC-031

gd. WILODGE PRICELESS WEY99-032

ggd. WILODGE LITTLELEM WEY95-027

ggs. BROADMEADOWS CANNON CAVC-031

gs. HARTSIDE JACKO TW94-756

ggd. HARTSIDE DAVINA TWD-331

Dam BURNDALE PANSY HHP99-020

ggs. STRATHALLAN DIPLOMAT GWD-009

gd. LOOSEBEARE IMELDA QA93-007

ggd. LOOSEBEARE CHERRY QAC-009

Lot	JM & SM Priestley							
11	BRONTEMOOR GLASGOW							
	PCI11-049		Born 13/07/11		UK 126538/101062			
			ggs. ESPOIR 87-89-003-720					
			gs. OCEAN 19-98-001-293					
			ggd. GLORIA 19-91-006-535					
Sire	*SEAVIEW UPSTART MMV03-033							
			ggs. GREENSONS GIGOLO GATG-009					
			gd. SEAVIEW POSH MMV99-015					
			ggd. STAVELEY IZZY BIW93-018-FOT					
			ggs. JERSEY 36-94-000-548					
			gs. SULTAN 23-02-773-546					
			ggd. ISABELLE 23-93-050-424					
Dam	BRONTEMOOR BRAID PCI06-059							
			ggs. BROADMEADOWS TOMBOLA CAVT-011					
			gd. BRONTEMOOR RINGLET PCI00-037					
			ggd. BRONTEMOOR HAMBYE PCI92-006					
Signet Recorded Weights	100	200	300	400	500			
Last BLUP'd 10/03/2013	185	348	492	625	764			
MLC	C E(%)	C V	200M(kg)	200G(kg)	400G(kg)	Fat(mm)	MD(mm)	BV
Data EBV	-3.0	LMOC	-2	+22	+28	0	+3.4	LM+21
Acc %	60	62	54	74	75	47	67	74
BLCS Index	97	100	93	103	96	92	108	99

Lot	W J Hickson							
12	BECK GAME							
	HGV11-288		Born 28/07/11		UK 180867/700288			
			ggs. BROADMEADOWS VIP CAVV-024-FOT					
			gs. BROADMEADOWS CANNON CAVC-031					
			ggd. BROADMEADOWS AINSI CAVA-003					
Sire	BECK PADNEY HGV99-005							
			ggs. BERRICHON 36-86-006-844					
			gd. BECK MILDRED HGV96-001					
			ggd. BECK HILLARY HGV92-002					
			ggs. NESTOR 19-97-013-433					
			gs. ARDNACRUSHA UTHMAN HRWU-254					
			ggd. LUSTRE PELL-141					
Dam	BECK DODO HGV08-017							
			ggs. CROWNHEAD GRANITECITY BBAG-151					
			gd. BECK OLIVETTE HGV98-011					
			ggd. BECK IDA HGV93-001					

BECK GAME is the last progeny to be offered for sale from **Beck Padney**. **Beck Mildred** (*gdam*) has been flushed recently. **Berrichon** (*3sire*) bred extremely well for a number of years at the Crownhead Herd and was noted for his females.

semenstore.co.uk

quality limousin semen on-line

Semenstore is a practical one-stop Limousin semen shop for vendors and buyers. The Semenstore features:

On-line semen purchasing

Automated service

Payment collection

Professional marketing

Semen for all markets

Export and domestic

Competitive pricing and costs

Unique offers & packages

One-stop Limousin semen shop



www.semenstore.co.uk

Lot Messrs Kitching
13 DALEBOTTOM GOVERNOR
 KBB11-440 Born 01/08/11 UK 101979/100440
 ggs. RONICK COSMOS DYC-051
 gs. TUNNELBY PAPYRHUS TAP99-023
 ggd. TUNNELBY HENRIETTA TAP92-003

Sire GUNNERFLEET VINCE HDR04-036
 ggs. BROADMEADOWS CANNON CAVC-031
 gd. GUNNERFLEET LUNETT HDR95-006-FOT
 ggd. BALLYBURTON UNA KVVU-003
 ggs. NESTOR 19-97-006-771
 gs. UGUES 19-31-558-775
 ggd. ECLIPSE 19-89-009-628

Dam DALEBOTTOM CHRISTMAS KBB07-333
 ggs. SOLEIL 19-31-107-866
 gd. CLOUGHHEAD VELCRO HCX04-313
 ggd. CLOUGHHEAD JANE HCX94-084-FOT

Lot David Baillie
14 CALLA GLENFIDDACH
 BCL11-024 Born 14/08/11 UK 560812/101883
Twin to a male

ggs. POMPIER 87-23-740-380
 gs. SABLE 23-02-612-297
 ggd. PAULETTE 23-99-059-329

Sire MYNACH DRAMBUIE GDF08-048
 ggs. OEDIPE 23-99-059-239
 gd. MYNACH TOUTONNE GDF02-029
 ggd. MYNACH LOUTONNE GDF95-001
 ggs. OXYGENE 12-98-171-453
 gs. WINDSOLE APOLLO LCS05-001
 ggd. WINDSOLE ROSEMARY LCS00-003

Dam CALLA EMILY BCL09-012
 ggs. MIDDLEDALE SCOOPYDOO BDD01-072
 gd. CALLA AUDREY BCL05-036
 ggd. CALLA TRACY BCL02-002

Signet Recorded Weights	100	200	300	400	500				
Last BLUP'd 10/03/2013	163	288	424	600	0				
MLC	C E(%)	C V	200M(kg)	200G(kg)	400G(kg)	Fat(mm)	MD(mm)	BV	
Date EBV	-3.3	LMOC	-2	+41	+69	-0.3	+3.9	LM+32	
Acc %	56		43	72	73	65	71	71	
BLCS Index	95	96	93	125	125	112	113	115	

CALLA GLENFIDDACH has been semen tested.

Lot **15** J Common
CROSSDYKES GREGOR
 CRC11-571 Born 18/08/11 UK 582060/600571
 ggs. HEROS 36-92-005-318
 gs. CLOUGHHEAD LORD HCX95-142
 ggd. CLOUGHHEAD FAVOURITE HCXF-031-FOT
 Sire ***CULNAGECHAN BULLSEYE HQG06-018**
 ggs. MERESIDE FILIPO HCGF-176
 gd. BALLYDONAGHY NIGHTINGALE KCB97-001
 ggd. ROBBSTOWN IONA ROB93-006
 ggs. MEXICAIN 87-96-002-892
 gs. REDPATHS PELICAN REY99-106
 ggd. LINROSS MELANIE DDO96-099
 Dam **CROSSDYKES BAMBI CRC06-317**
 ggs. SARKLEY MOONLIGHT PBO96-055
 gd. CROSSDYKES PENNY CRC99-004
 ggd. CROSSDYKES MARY CRC96-001

Signet Recorded Weights	100	200	300	400	500			
Last BLUP'd 10/03/2013	172	307	462	632	0			
MLC	C E(%)	C V	200M(kg)	200G(kg)	400G(kg)	Fat(mm)	MD(mm)	BV
Data EBV	-2.6	LMOC	0	+38	+73	-0.1	+4.4	LM+38
Acc %	51	50	50	73	74	46	67	72
BLCS Index	100	101	104	122	127	99	117	125

Lot **16** Messrs John Logan
HOMEBYRES GOODWIN
 LAP11-083 Born 22/08/11 UK 560248/701153 Got by AI
 ggs. LEO 23-95-071-399
 gs. NENUPHAR 87-97-011-143
 ggd. GIROFLEE 87-91-000-077
 Sire ***DOLCORSELLWYN BRYNMOR VU06-012**
 ggs. BROADMEADOWS CANNON CAVC-031
 gd. DOLCORSELLWYN PATSI VU99-004
 ggd. EMUE 23-89-050-709
 ggs. BALNACRAIG SUPREME CHT01-135
 gs. HOMEBYRES VANHEE LAP04-045
 ggd. HOMEBYRES ROSEBUD LAP00-007
 Dam **HOMEBYRES ELLIE LAP09-031**
 ggs. GRAHAMS TALENT GV02-136
 gd. HOMEBYRES AINSLIE LAP05-054
 ggd. HOMEBYRES UDAINSI LAP03-005

Signet Recorded Weights	100	200	300	400	500			
Last BLUP'd 10/03/2013	159	279	441	603	752			
MLC	C E(%)	C V	200M(kg)	200G(kg)	400G(kg)	Fat(mm)	MD(mm)	BV
Data EBV	-1.1	LMOC	+1	+18	+44	-0.4	+3.1	LM+30
Acc %	63	68	48	73	74	51	66	74
BLCS Index	109	96	110	98	107	119	106	113

Lot Ashley McInnes
17 MCINNES GOLDENBALLS
 QDR11-004 Born 11/09/11 UK 146760/500028
 ggs. GREENWELL MAJOR NK96-017
 gs. LOWGATE ADONIS BIT05-010
 ggd. LOWGATE MINNIE BIT96-007

Sire STRATTONS DONIS SNE08-084
 ggs. FLEETHILL SABIN GR01-041
 gd. STRATTONS VETTE SNE04-016
 ggd. FLEETHILL SEVETTE GR01-009
 ggs. NUMERO 19-97-018-143
 gs. ROULY 19-30-678-365
 ggd. HALEA 87-92-006-169

Dam GREENWELL USHAW NK03-039
 ggs. RONICK MEMBER DY96-054
 gd. GREENWELL SASHA NK01-010
 ggd. GREENWELL NANCES NK97-022

Lot JM & SM Priestley
18 BRONTEMOOR GRANGE
 PCI11-073 Born 14/09/11 UK 126538/501087
 ggs. LEO 23-95-071-399
 gs. NENUPHAR 87-97-011-143
 ggd. GIROFLEE 87-91-000-077

Sire ELITE BENN IE221062720558
 ggs. NEPTUNE 87-97-002-840
 gd. USABELBEN 36-15-044-843
 ggd. MEXICAINE 36-96-029-650
 ggs. JERSEY 36-94-000-548
 gs. SULTAN 23-02-773-546
 ggd. ISABELLE 23-93-050-424

Dam BRONTEMOOR ANNAPURNA PCI05-070
 ggs. BROADMEADOWS TOMBOLA CAVT-011
 gd. BRONTEMOOR REDRUM PCI00-012
 ggd. BRONTEMOOR EDELWEISS PCIE-002

Signet Recorded Weights	100	200	300	400	500			
Last BLUP'd 10/03/2013	205	362	530	685	807			
MLC	C E(%)	C V	200M(kg)	200G(kg)	400G(kg)	Fat(mm)	MD(mm)	BV
Data EBV	-4.7	LM-1C	+1	+36	+66	-0.1	+4.5	LM+36
Acc%	60		52	74	75	43	67	74
BLCS Index	87		110	120	123	99	118	122



G Shepherd Animal Health
Advice, Quality & Value



Our aim is to help you and your herd by maintaining and improving;

- Calf Health- including our IBR *élite* colostrum
- Fertility- unique Estrus Alert heat detectors
- Growth Rates- Rumen First Live Yeast & Biostar
- Rumen Function-Ostrea Buffer, Mycotoxin Absorber



All products are backed up by our in-house Veterinary Advice.

G Shepherd Animal Health

Moorside House Farm, Woodplumpton, Preston PR4 0TB

Office: 01772 690333 Graham: 07778191964 Chris: 07535889844

www.gshepherd.co.uk

office@gshepherd.co.uk

Lot **19** J C G Bloom & Son
SCORBORO GOLDFEVER
 BEA11-423 Born 16/09/11 UK 142543/700423
 ggs. SYMPA 48-01-006-969
 gs. AMPERTAINÉ ABRACADABRA MGD05-014
 ggd. AMPERTAINÉ PENNY MGD99-001
 Sire **CULNAGECHAN EXECUTIVE HQG09-004**
 ggs. KYPE SPARTACUS CAQ01-040
 gd. CARMORN VELVET MCN04-016
 ggd. CARMORN OLIVE MCN98-009
 ggs. HALTCLIFFE PICASSO RP99-040
 gs. COACHHOUSE SUPREME HLX01-033
 ggd. WYRESIDE OCTAVIA PDG98-080
 Dam **SCORBORO EXCESS BEA09-349**
 ggs. IONESCO 36-93-000-206
 gd. SCORBORO TOFFEE BEA02-077
 ggd. SCORBORO RECIPE BEA00-010

Signet Recorded Weights	100	200	300	400	500				
Last BLUP'd 10/03/2013	168	317	418	570	695				
MLC	C E(%)	C V	200M(kg)	200G(kg)	400G(kg)	Fat(mm)	MD(mm)	BV	
Data EBV	-2.2	LM+1C	+3	+38	+42	-0.2	+8.4	LM+38	
Acc %	63	69	45	74	74	66	74	75	
BLCS Index	102	104	122	122	106	105	150	125	

SCORBORO GOLDFEVER is semen tested and DNA sire verified.

Lot **20** Barker Farming Partnership
TANCREDRANGE GAVIN
 BVS11-002 Born 24/09/11 UK 121165/300062
 ggs. WILODGE TONKA WEY02-002
 gs. WILODGE VANTASTIC WEY04-037
 ggd. RAVENELLE 23-51-224-583
 Sire ***IRONSTONE COLONEL SDS07-069**
 ggs. BRONTEMOOR ILKLEY PCI93-012
 gd. WILODGE RELISA WEY00-030
 ggd. HOUGHTON LISA EBN95-006
 ggs. IMPERIAL 87-93-000-421
 gs. GOLDIES UPPERCRUST GS03-549
 ggd. EMUE 19-89-010-238
 Dam **BANKDALE CEDAR WLJ07-211**
 ggs. BROADMEADOWS CANNON CAVC-031
 gd. BRIARWOOD REDA GDO00-008
 ggd. STONELEIGH FREDA BFYF-018

Lot R M & H J Lewis
21 REDLAND GAMEBOY
 LFK11-026 Born 25/09/11 UK 313884/500026
 ggs. MICMAC 87-96-005-024
 gs. TAMIS 22-46-741-719
 ggd. ONDEE 22-98-021-357
Sire *BOUQUET 19-32-649-555
 ggs. OFFICER 19-30-186-112
 gd. SIRENE 19-30-928-919
 ggd. LOUVE 19-95-001-026
 ggs. GREENWELL MAJOR NK96-017
 gs. GOLDIES VALMET GS04-603
 ggd. JACINTHE 19-94-013-002
Dam REDLAND DAMSEL LFK08-089
 ggs. OBISQUE 36-15-069-732
 gd. MEDRAD ANNA HHY05-280
 ggd. MEDRAD NAMIS HHY97-009

REDLAND GAMEBOY is a heifer's calf with a quiet temperament.

Lot T Cheshire
22 GALOPIN
 23-12-854-227 Born 26/09/11
Bred by Earl de Gourneix, Gourneix, 23130 St Loup, France
 ggs. PABLO 12-99-079-969
 gs. URUGUAY 12-04-073-860
 ggd. SEMOULE 12-01-072-860
Sire *BAHUT 87-53-841-575
 ggs. HATELET 19-92-000-842
 gd. NORVEGIENN 87-97-009-574
 ggd. TAQUINE 87-82-008-241
 ggs. BAMBINO 19-86-005-742
 gs. MAS DU CLO 23-96-032-213
 ggd. COSETTE 23-87-051-003
Dam TANIERE 86-02-132-249
 ggs. MOUSTIQUE 87-96-003-018
 gd. ORTIE 86-98-614-039
 ggd. JAVOTTE 86-94-111-329

GALOPIN is a very calm, easy fleshed bull. He has three exceptional full sisters which can be viewed at www.gourneixlimousin.fr.

Lot Ashley McInnes
23 MCINNES GEEZA
 ODR11-005 Born 27/09/11 UK 146760/600029
 ggs. GREENWELL MAJOR NK96-017
 gs. LOWGATE ADONIS BIT05-010
 ggd. LOWGATE MINNIE BIT96-007
Sire STRATTONS DONIS SNE08-084
 ggs. FLEETHILL SABIN GR01-041
 gd. STRATTONS VETTE SNE04-016
 ggd. FLEETHILL SEVETTE GR01-009
 ggs. NEUF 22-97-004-114
 gs. VAGABOND 24-24-484-782
 ggd. NICHE 24-97-015-162
Dam GREENWELL DAISY NK08-051
 ggs. RONICK MEMBER DY96-054
 gd. GREENWELL UNITY NK03-018
 ggd. GREENWELL NINA NK97-015

Lot	James Common & Son									
24	CROSSDYKES GRISHAM									
	CRC11-580		Born 01/10/11		UK 582060/100580					
			ggs. HEROS 36-92-005-318							
			gs. CLOUGHHEAD LORD HCX95-142							
			ggd. CLOUGHHEAD FAVOURITE HCXF-031-FOT							
Sire	*CULNAGECHAN BULLSEYE HQG06-018									
			ggs. MERESIDE FILIPO HCGF-176							
			gd. BALLYDONAGHY NIGHTINGALE KCB97-001							
			ggd. ROBBSTOWN IONA ROB93-006							
			ggs. GREENWELL MAJOR NK96-017							
			gs. SARKLEY THUNDERBOLT PBO02-267							
			ggd. SARKLEY JUDY PBO94-011							
Dam	CROSSDYKES DIVA CRC08-428									
			ggs. REDPATHS PELICAN REY99-106							
			gd. CROSSDYKES VELVET CRC04-003							
			ggd. CROSSDYKES PENNY CRC99-004							
Signet Recorded Weights	100	200	300	400	500					
Last BLUP'd 10/03/2013	149	282	424	560	0					
MLC	C E(%)	C V	200M(kg)	200G(kg)	400G(kg)	Fat(mm)	MD(mm)		BV	
Data EBV	-3.3	LM+1C	-2	+29	+51	-0.1	+4.3		LM+30	
Acc %	49	51	48	72	73	46	66		71	
B LCS Index	95	105	93	111	112	99	116		113	

Lot	M T Jones									
25	BAILEA GOLDENSHOT									
	JAG11-078		Born 06/10/11		UK 720297/102017					
			ggs. PETUNIA 87-00-670-240							
			gs. CLOUGHHEAD UMPIRE HCX03-221							
			ggd. GASCOGNE 23-91-060-414							
Sire	*OVERTHWAITE CRACKERJACK PK07-008									
			ggs. PAPILLON 23-00-228-111							
			gd. TATANIA 19-31-398-684							
			ggd. JOUETTE 19-94-012-031							
			ggs. NAVIRE 12-98-182-737							
			gs. SERINGA 87-59-520-312							
			ggd. EMOTION 87-89-013-607							
Dam	BAILEA ERMINE JAG09-026									
			ggs. MYTHE 87-96-006-263							
			gd. BAILEA BIANCA JAG06-069							
			ggd. BAILEA NIGHTINGALE JAG97-010							

Lot **26** M T Jones
BAILEA GONDOLA
 JAG11-084 Born 21/10/11 UK 720297/102024
 ggs. PETUNIA 87-00-670-240
 gs. CLOUGHHEAD UMPIRE HCX03-221
 ggd. GASCOGNE 23-91-060-414
Sire *OVERTHWAITE CRACKERJACK PK07-008
 ggs. PAPILLON 23-00-228-111
 gd. TATANIA 19-31-398-684
 ggd. JOUETTE 19-94-012-031
 ggs. NESTOR 19-97-007-920
 gs. SALOMON 19-30-888-596
 ggd. NINA 19-96-004-395
Dam BAILEA EVERSOCLEVER JAG09-043
 ggs. MYTHE 87-96-006-263
 gd. BAILEA OBOE JAG98-022
 ggd. BAILEA LUCINDA JAG95-043

Lot **27** M T Jones
BAILEA GOLIATH
 JAG11-085 Born 22/10/11 UK 720297/202025
 ggs. PETUNIA 87-00-670-240
 gs. CLOUGHHEAD UMPIRE HCX03-221
 ggd. GASCOGNE 23-91-060-414
Sire *OVERTHWAITE CRACKERJACK PK07-008
 ggs. PAPILLON 23-00-228-111
 gd. TATANIA 19-31-398-684
 ggd. JOUETTE 19-94-012-031
 ggs. NAVIRE 12-98-182-737
 gs. SERINGA 87-59-520-312
 ggd. EMOTION 87-89-013-607
Dam BAILEA EMMALEE JAG09-044
 ggs. SALOMON 19-30-888-596
 gd. BAILEA BUTTERFLY JAG06-046
 ggd. BAILEA ROHANNA JAG00-103

Lot **28** M T Jones
BAILEA GRANDNATIONAL
 JAG11-087 Born 22/10/11 UK 720297/302026
 ggs. EPSON 87-89-003-682
 gs. NAVIRE 12-98-182-737
 ggd. LUTECE 12-95-163-127
Sire SERINGA 87-59-520-312
 ggs. CORDON 36-87-003-443
 gd. EMOTION 87-89-013-607
 ggd. CAMELIA 87-87-003-504
 ggs. IMPAIR 87-93-004-853
 gs. OSCAR 36-98-007-590
 ggd. FRAISE 36-90-010-275
Dam BAILEA TELETUBBY JAG02-073
 ggs. IMPOSANT 23-93-044-929
 gd. BAILEA NOVELTY JAG97-043
 ggd. BAILEA JOSEPHINE JAG94-020

Lot **29** S & H Illingworth
GLENROCK GOLDFINGER
 IE11-045 Born 01/11/11 UK 581793/601045 Got by AI
 ggs. LEO 23-95-071-399
 gs. NENUPHAR 87-97-011-143
 ggd. GIROFLEE 87-91-000-077
 Sire ***BREMORE ARTIST IE171088870160**
 ggs. OBLIGEANT 87-98-004-226
 gd. SAMBA 87-23-740-568
 ggd. DILIGENCE 87-88-009-130
 ggs. HEROS 36-92-005-318
 gs. CLOUGHHEAD LORD HCX95-142
 ggd. CLOUGHHEAD FAVOURITE HCXF-031-FOT
 Dam **GLENROCK ARIANNA IE05-585**
 ggs. MARQUIS 87-96-001-260
 gd. GLENROCK SASPIRILLA IE01-148
 ggd. GLENROCK MANILLA IE96-001

Signet Recorded Weights	100	200	300	400	500			
Last BLUP'd 10/03/2013	0	0	445	577	0			
MLC	C E(%)	C V	200M(kg)	200G(kg)	400G(kg)	Fat(mm)	MD(mm)	BV
Data EBV	-2.0	LM+2C	0	+13	+42	-0.4	+1.3	LM+27
Acc %	65	72	52	74	76	67	73	76
BLCS Index	104	110	104	92	106	119	91	107

GLENROCK GOLDFINGER is full brother to **Glenrock Dictator** 10,000gns Carlisle October 2009. **Glenrock Saspirilla** (*gdam*) is also the mother of **Glenrock Ventura** 24,000gns Carlisle May 2006 and **Glenrock Garibaldi** 13,000gns Carlisle Feb 2013.

Lot **30** E S & E Norman
NORMAN GRANDEUR
 NBB11-084 Born 02/11/11 UK 101316/300873
 ggs. SYMPA 48-01-006-969
 gs. HALTCLIFFE ULLSWATER RP03-011
 ggd. RENONCULE 19-30-708-827
 Sire ***GLANGWDEN BIGBOY JBW06-618**
 ggs. JACOT 36-94-005-555
 gd. PALUCHE 36-15-030-939
 ggd. INSIGNE 36-93-003-454
 ggs. NORMANDE JACK CAX94-001
 gs. DYFRI MAESTRO EAC96-032
 ggd. DYFRI FERN EACF-005
 Dam **STACEY REBECCA WEW00-002**
 ggs. DJERK 19-88-001-713
 gd. STACEY NATALIE WEW97-001
 ggd. BROADMEADOWS GLAMIS CAVG-004

Lot T Cheshire

31 GINO

23-12-854-248

Born 05/11/11

Bred by Earl de Gourneix, Gourneix, 23130 St Loup, France

ggs. PABLO 12-99-079-969

gs. URUGUAY 12-04-073-860

ggd. SEMOULE 12-01-072-860

Sire *BAHUT 87-53-841-575

ggs. HATELET 19-92-000-842

gd. NORVEGIENN 87-97-009-574

ggd. TAQUINE 87-82-008-241

ggs. HEUREUX 87-92-007-567

gs. OLLA L98084914

ggd. LADY LZ95122324

Dam TULIPE 19-31-132-147

ggs. NUBIEN 23-97-051-937

gd. PRUNELLE 19-30-629-913

ggd. HYACINTHE 19-92-007-902

TULIPE (*dam*) breeds heavily muscled progeny. For further information, visit www.gourneixlimousin.fr

Lot Barker Farming Partnership

32 TANCREDGRANGE GEOFF

BVS11-006

Born 08/11/11

UK 121165/700066

ggs. NAPOLEON 23-97-050-806

gs. REDSTONE STORM HID01-063

ggd. REDROCK LEANNE DX95-005

Sire REDROCK BARON DX06-206

ggs. GREENWELL MANAGER NK96-012

gd. BRIDGEDALE ULAY GBX03-006

ggd. BRIDGEDALE RACHEL GBX00-004

ggs. IONESCO 36-93-000-206

gs. SULKI 19-31-138-861

ggd. NOELLE 19-97-014-099

Dam REDROCK CANDY DX07-214

ggs. GABARIT 72-91-110-535

gd. GRANGE JACQUELINE SAD94-839

ggd. GRANGE GIRONELLA SADG-637

TANCREDGRANGE GEOFF is from an easy calving line. **Redrock Candy** (*dam*) is the milkiest cow in the herd.

Increased discount
now available for bulls
pre-sale semen tested*

IF YOU SELL OR PURCHASE A BULL THE FOLLOWING INSURANCES ARE AVAILABLE IMMEDIATELY

Vendors Guarantee – covering YOU in the event your newly sold bull fails to meet the breeding warranty under the sale conditions.

Purchasers All Risks Mortality & Permanent Loss of Use – covering YOU if your newly purchased bull dies or is incapable of working as a result of accident, illness or disease.

AT H&H INSURANCE WE HAVE:

- **Competitive Premiums**
- **Friendly & Qualified Staff**
- **25 Years of Experience**
- **Quote & Cover Available Immediately**

For advice and further information prior to the sale please telephone Caroline on 01228 406290.

For a competitive quote on the day of the sale, just ask at the H&H counter – we'll be happy to discuss your requirements with you...

CAN YOU REALLY AFFORD TO TAKE THE RISK AND NOT INSURE?

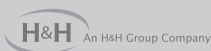
**Documentary evidence must be supplied pre-sale*



Borderway, Rosehill, Carlisle, Cumbria CA1 2RS

T. 01228 406290 F. 01228 406291

www.hhinsurancebrokers.co.uk



H&H Insurance Brokers Ltd is Authorised and Regulated by the Financial Services Authority: No 305809

Lot Breconside Farming
33 BRECONSIDE GRIFFIN

BPO11-031

Born 14/11/11

UK 582158/100272

ggs. TITAN MEB-010T

gs. GREENSONS GIGOLO GATG-009

ggd. SURPRISE 87-81-006-951

Sire SPITTALTON CIGOLO BKY07-030

ggs. DYFRI TANNER EAC02-039

gd. SPITTALTON AMPLE BKY05-004

ggd. SPITTALTON ULNA BKY03-003

ggs. RONICK HAWK DY92-026

gs. KAPRICO ATLAS SHJ05-002

ggd. KAPRICO RAVELLE SHJ00-007

Dam BRECONSIDE EDITH BPO09-008

ggs. NEWHOUSE SUGAR AC01-142

gd. BRECONSIDE BELLA BPO06-011

ggd. LYLES SABRINA LCX01-013

Signet Recorded Weights	100	200	300	400	500				
Last BLUP'd 10/03/2013	149	264	393	533	0				
MLC	C E(%)	C V	200M(kg)	200G(kg)	400G(kg)	Fat(mm)	MD(mm)	BV	
Data EBV	0.1	LM+4C	+1	+25	+49	-0.1	+2.7	LM+28	
Acc %	57	53	45	71	72	38	62	70	
BLCS Index	117	126	110	107	111	99	103	109	

Lot R M & H J Lewis

34 REDLAND GRANITE

LFK11-028

Born 18/11/11

UK 313884/700028

ggs. CASSIS 40-88-028-055

gs. NEUF 22-97-004-114

ggd. JUNGLE 22-94-004-270

Sire *ELDORADO 19-33-491-015

ggs. OMER 23-98-026-596

gd. TORRIDE 19-31-439-015

ggd. POLENTA 19-30-158-215

ggs. TAMIS 22-46-741-719

gs. BOUQUET 19-32-649-555

ggd. SIRENE 19-30-928-919

Dam REDLAND EMOTION LFK09-109

ggs. GOLDIES TERRY GS02-428

gd. REDLAND VELVET LFK04-014

ggd. BOWERS LAURA JZ95-002

REDLAND GRANITE is a quiet, well-muscled heifer's calf; the first son to be offered for sale by **Eldorado**. **Redland Emotion (dam)** is a daughter of **Bouquet**, purchased for €14,000 and breeding exceptionally well.

Lot G L Hutton
35 CLOUGHHEAD GODFATHER
 HCX11-835 Born 20/11/11 UK 101983/300835
 ggs. LUC 87-75-001-764
 gs. OURSON 87-78-002-862
 ggd. EBLOUISSANTE 87-69-005-644
Sire UTRILLO 19-31-859-900
 ggs. CONCERT 23-87-052-219
 gd. GENTILLE 23-91-053-162
 ggd. USUELLE 23-83-051-972
 ggs. DOMINO 19-88-001-780
 gs. SOLEIL 19-31-107-866
 ggd. DULCINEE 19-88-006-711
Dam CLOUGHHEAD VERITY HCX04-293
 ggs. CAID 87-87-007-521
 gd. GLORIEUSE 23-91-059-999
 ggd. BIGUINE 23-86-005-586

Lot J W Fieldson
36 FIELDSON GUNA
 FCE11-919 Born 21/11/11 UK 140653/600919 Got by AI
 ggs. MALIBU 36-96-026-196
 gs. PETUNIA 87-00-670-240
 ggd. GATINE 87-91-002-851
Sire *CLOUGHHEAD UMPIRE HCX03-221
 ggs. ESPAGNOL 23-89-055-553
 gd. GASCOGNE 23-91-060-414
 ggd. BAVETTE 23-86-005-590
 ggs. MONKEYTRICKS 1
 gs. GUNNERFLEET PLUNAS HDR99-010
 ggd. GUNNERFLEET LUNA HDR95-003-FOT
Dam FIELDSON UNA FCE03-258
 ggs. GREENWELL MIKE NK96-019
 gd. FIELDSON OXTAIL FCE98-334
 ggd. FIELDSON MARTINI FCE96-061

Signet Recorded Weights	100	200	300	400	500			
Last BLUP'd 10/03/2013	183	311	462	616	0			
MLC	C E(%)	C V	200M(kg)	200G(kg)	400G(kg)	Fat(mm)	MD(mm)	BV
Data EBV	-1.8	LM+1C	+2	+20	+38	-0.2	+3.0	LM+24
Acc %	66	70	59	75	71	57	69	75
BLCS Index	105	109	116	101	103	105	105	103

FIELDSON GUNA has great shape and a wonderful temperament. **Fieldson Una** (*dam*) is an exceptional breeder within the herd.

Lot Messrs Kitching

37 DALEBOTTOM GENERAL

KBB11-445

Born 24/11/11

UK 101979/600445

ggs. OURSON 87-78-002-862

gs. UTRILLO 19-31-859-900

ggd. GENTILLE 23-91-053-162

Sire DELICIEUX 19-33-426-585

ggs. MILOU 19-96-018-369

gd. VIENOISE 19-32-055-935

ggd. RAZZIA 19-30-688-834

ggs. AFFRANCHI 02-85-050-514

gs. DJERK 19-88-001-713

ggd. MARGUERITE 87-76-006-012

Dam DALEBOTTOM EILEEN KBB09-362

ggs. SOLEIL 19-31-107-866

gd. CLOUGHHEAD VELCRO HCX04-313

ggd. CLOUGHHEAD JANE HCX94-084-FOT

Lot

38 WITHDRAWN

First Thirst®

IBR *elite* 250g



Pure Colostrum Powder

IBR Antibody Negative

IBR Virus Free

Johnes Free

EBL Free

As simple as;

- 1. Fill**
- 2. Shake**
- 3. Feed**



G Shepherd Animal Health
Advice, Quality & Value

Moorside House Farm, Woodplumpton, Preston PR4 0TB
Office: 01772 690333 Graham: 07778191964 Chris: 07535889844

www.gshepherd.co.uk

office@gshepherd.co.uk



Lot J Burnett & Sons

39 SPITTALTON GAELIC

BKY11-054

Born 04/12/11

UK 542794/700566

ggs. BROADMEADOWS CANNON CAVC-031

gs. RONICK LUKE DY95-010

ggd. RONICK DULCINEA DYD-022

Sire LODGE EQUAL CBM09-259

ggs. RONICK SHAPELY DY01-208

gd. LODGE UANDME CBM03-077

ggd. RONICK IMAGE DY93-016-FOT

ggs. MARDEN SOROTH DA01-032

gs. HARGILL BLAZE WNA06-006

ggd. LUMBYLAW STARBURST OA01-106

Dam SPITTALTON ELIZABETH BKY09-002

ggs. MIDDLEDALE SHERGAR BDD01-074

gd. SPITTALTON BERTHA BKY06-006

ggd. SPITTALTON TIGGY BKY02-011

Signet Recorded Weights	100	200	300	400	500				
Last BLUP'd 10/03/2013	166	0	389	529	0				
MLC	C E(%)	C V	200M(kg)	200G(kg)	400G(kg)	Fat(mm)	MD(mm)	BV	
Data EBV	-3.3	LM-1C	-1	+20	+35	-0.1	+3.3	LM+23	
Acc %	46	46	37	69	72	61	64	69	
BLCS Index	95	93	99	101	101	99	108	101	

Lot J M & M J Bennett

40 THREAPHURST GOVERNOR

BFG11-021

Born 09/12/11

UK 182987/600341

Got by AI

ggs. MONKEYTRICKS 1

gs. GUNNERFLEET PLUNAS HDR99-010

ggd. GUNNERFLEET LUNA HDR95-003-FOT

Sire *FIELDSON ALFY FCE05-384

ggs. BROADMEADOWS CANNON CAVC-031

gd. EDEN NATASHA HCS97-074

ggd. BIRTLES DAISY NLD-029

ggs. BROADMEADOWS CANNON CAVC-031

gs. RONICK HAWK DY92-026

ggd. RONICK ESTHER DYE-040

Dam THREAPHURST BIANCO BFG06-015

ggs. RONICK COSMOS DYC-051

gd. THREAPHURST LAURA BFG95-038

ggd. THREAPHURST HAZEL BFG92-018

Signet Recorded Weights	100	200	300	400	500				
Last BLUP'd 10/03/2013	171	311	430	577	0				
MLC	C E(%)	C V	200M(kg)	200G(kg)	400G(kg)	Fat(mm)	MD(mm)	BV	
Data EBV	-3.6	LM+2C	+2	+19	+40	-0.3	+4.1	LM+29	
Acc %	61	68	59	74	71	57	68	73	
BLCS Index	93	114	116	99	104	112	114	110	

Lot **41** J W Fieldson
FIELDSON GOLDDUST
 FCE11-927 Born 10/12/11 UK 140653/700927
 ggs. CLOUGHHEAD UMPIRE HCX03-221
 gs. HALTCLIFFE BMW RPO6-563
 ggd. HALTCLIFFE ULTRA RPO3-019
 Sire ***REDROCK EDDY DX09-335**
 ggs. ALLANFAULD RUMPUS MCF00-034
 gd. REDROCK VICTORIA DX04-086
 ggd. REDROCK NAOMI DX97-013
 ggs. FIELDSON PICCADILLY FCE99-378
 gs. FIELDSON ULTIMATE FCE03-234
 ggd. RAMSAY PORTIA MHR99-133
 Dam **FIELDSON DIGITAL FCE08-664**
 ggs. GUNNERFLEET PLUNAS HDR99-010
 gd. FIELDSON SPLENDID FCE01-132
 ggd. BAPTON OCARINA BES98-1520

Signet Recorded Weights	100	200	300	400	500			
Last BLUP'd 10/03/2013	153	282	440	598	0			
MLC	C E(%)	C V	200M(kg)	200G(kg)	400G(kg)	Fat(mm)	MD(mm)	BV
Data EBV	-1.2	LM+2C	+2	+11	+23	-0.3	+1.6	LM+20
Acc %	59	58	36	69	65	36	60	69
BLCS Index	109	113	116	90	92	112	93	97

Lot **42** J Burnett & Sons
SPITTALTON GRIFFIN
 BKY11-057 Born 12/12/11 UK 542794/300569
 ggs. PETUNIA 87-00-670-240
 gs. CLOUGHHEAD UMPIRE HCX03-221
 ggd. GASCOGNE 23-91-060-414
 Sire ***HALTCLIFFE DJ RP08-755**
 ggs. NENUPHAR 87-97-011-143
 gd. RADIO 87-00-840-381
 ggd. ELLE 87-89-000-020
 ggs. WILODGE TONKA WEY02-002
 gs. WILODGE VANTASTIC WEY04-037
 ggd. RAVENELLE 23-51-224-583
 Dam **SPITTALTON DANIELLE BKY08-030**
 ggs. DYFRI TANNER EAC02-039
 gd. SPITTALTON BRAMBLE BKY06-012
 ggd. SPITTALTON RACHEL BKY00-007

Signet Recorded Weights	100	200	300	400	500			
Last BLUP'd 10/03/2013	133	0	354	527	0			
MLC	C E(%)	C V	200M(kg)	200G(kg)	400G(kg)	Fat(mm)	MD(mm)	BV
Data EBV	-6.3	LM-3C	-1	+31	+61	-0.3	+4.1	LM+37
Acc %	57	59	44	71	74	65	68	71
BLCS Index	76	79	99	114	119	112	114	123

Lot J Burnett & Sons

43 SPITTALTON GARRISON

BKY11-059

Born 13/12/11

UK 542794/500571

ggs. BROADMEADOWS CANNON CAVC-031

gs. RONICK LUKE DY95-010

ggd. RONICK DULCINEA DYD-022

Sire LODGE EQUAL CBM09-259

ggs. RONICK SHAPELY DY01-208

gd. LODGE UANDME CBM03-077

ggd. RONICK IMAGE DY93-016-FOT

ggs. MARDEN SOROTH DA01-032

gs. HARGILL BLAZE WNA06-006

ggd. LUMBYLAW STARBURST OA01-106

Dam SPITTALTON EDWINA BKY09-024

ggs. CLOUGHHEAD LORD HCX95-142

gd. SPITTALTON UMBRA BKY03-002

ggd. SPITTALTON RACHEL BKY00-007

Signet Recorded Weights	100	200	300	400	500				
Last BLUP'd 10/03/2013	156	0	363	529	0				
MLC	C E(%)	C V	200M(kg)	200G(kg)	400G(kg)	Fat(mm)	MD(mm)	BV	
Data EBV	-4.7	LM-2C	-1	+23	+35	0	+4.8	LM+27	
Acc %	45	46	38	69	72	61	64	69	
BLCS Index	87	88	99	104	101	92	120	107	

Lot J W Fieldson

44 FIELDSON GOBSMACKER

FCE11-938

Born 27/12/11

UK 140653/400938

ggs. SYMPA 48-01-006-969

gs. HALTCLIFFE BRAVO RP06-575

ggd. RONICK RICOLE DY00-078

Sire *FIELDSON ERASURE FCE09-739

ggs. NENUPHAR 87-97-011-143

gd. FIELDSON ALEX FCE05-421

ggd. FIELDSON OXYGEN FCE98-331

ggs. IMPERIAL 87-93-000-421

gs. GOLDIES UPPERCRUST GS03-549

ggd. EMUE 19-89-010-238

Dam FIELDSON CANDY FCE07-555

ggs. MERESIDE NABI HCG97-367

gd. HONINGTON PRIMARY AZ99-453

ggd. HONINGTON NURIE AZ97-221

Signet Recorded Weights	100	200	300	400	500				
Last BLUP'd 10/03/2013	181	331	467	638	0				
MLC	C E(%)	C V	200M(kg)	200G(kg)	400G(kg)	Fat(mm)	MD(mm)	BV	
Data EBV	-1.8	LM0C	-5	+43	+82	-0.2	+4.2	LM+40	
Acc %	58	57	42	71	66	38	62	70	
BLCS Index	105	97	76	128	134	105	115	128	

FIELDSON GOBSMACKER is a huge bull for his age and carries a top 2% Beef Value of LM+40. **Fieldson Candy** (*dam*) is an outstanding cow within the herd with an abundance of milk.



NEW

9 day proven
activity against
*Mycoplasma bovis*⁴

Your proven ally in the fight against calf pneumonia¹

Pneumonia is one of the most common diseases in young cattle and can have a significant effect on welfare and profitability. Your vet can advise you on an appropriate prevention plan, which could include both husbandry changes and a vaccination programme. However if pneumonia does strike, Draxxin is an ideal antibiotic to provide a rapid response.

- Proven against the key bacterial causes of pneumonia including *Mycoplasma bovis*
 - In a recent survey 44% of calves with pneumonia tested positive for *Mycoplasma bovis*²
- *Mycoplasma bovis* spreads rapidly, persists and is often poorly responsive to treatment
 - Early recognition and use of an effective long lasting antibiotic are key to treatment success³
 - Draxxin[®] is the only pneumonia antibiotic proven to provide at least 9 days activity against *Mycoplasma bovis*⁴
- Fast acting – reaches effective levels in lung tissue in just 1 hour⁵
- Long lasting – up to 15 days action⁶
- Easy to use – low volume dose, easy to inject even at low temperatures⁷

The UK's market leading pneumonia antibiotic⁸. Why risk anything else?

1. Wellman N.G. and O'Connor A.M. (2007) JVPT 30: 234-241 2. Pfizer respiratory serology surveillance scheme (October 2011 - March 2012) 3. Nicholas R.A.J (2011) Veterinary Record 168 p459-62 4. Moyaert H. et al. (2012) WBC XXVII Lisbon, Abstract 505 Poster Presentation 759 5. Cox S.R. et al. (2010) Intern J Appl Res Vet Med, Vol 8 (3): 129-137 6. Pfizer study 1530N-60-010-359 and bacterial MIC studies 7. Evans N.A (2005) Veterinary Therapeutics Vol 6 (2): 83-95 8. GPK Value based MAT September 2011 - August 2012. For further information please contact your veterinary surgeon or Zoetis UK Ltd, Walton Oaks, Dorking Road, Tadworth, Surrey, KT20 7NS. Customer Support: 0845 300 8034 Visit Us: zoetis.co.uk
Draxxin contains tulathromycin. Do not use in lactating cattle producing milk for human consumption. Meat withdrawal period 49 days [POM-V]
Use medicines responsibly. (www.noah.co.uk/responsible) Date of preparation: April 2013 AH370/13

zoetis

Lot Messrs Kitching
45 DALEBOTTOM GABLE
 KBB11-446 Born 28/12/11 UK 101979/700446
 ggs. RONICK COSMOS DYC-051
 gs. TUNNELBY POPYRHUS TAP99-023
 ggd. TUNNELBY HENRIETTA TAP92-003

Sire GUNNERFLEET VINCE HDR04-036
 ggs. BROADMEADOWS CANNON CAVC-031
 gd. GUNNERFLEET LUNETT HDR95-006-FOT
 ggd. BALLYBURTON UNA KVVU-003
 ggs. WESTHALL OCEAN FS98-554
 gs. BALLINLOAN RASCAL FDB00-040
 ggd. NEWHOUSE IBETHA AC93-009

Dam GRISEBURN BEVORN HCH06-141
 ggs. RONICK MEMBER DY96-054
 gd. GREENWELL TEVORN NK02-028
 ggd. GREENWELL FEVORN NKF-102

Lot Anthony Sayer Jr
46 WILLOWVALE HERNANDEZ
 SPL12-001 Born 03/01/12 UK 173086/400011 Got by AI
 ggs. DARTAGNAN 19-88-004-477
 gs. IMPAIR 87-93-004-853
 ggd. DIGUE 87-88-002-552

Sire *MARRON 36-96-018-225
 ggs. TARVIS 19-82-001-611
 gd. FRAISE 36-90-010-275
 ggd. BARONNE 36-86-883-662
 ggs. LIDO 87-95-000-159
 gs. PRINCE 87-28-050-109
 ggd. FAVORITE 87-90-007-098

Dam BETTI 87-27-950-682
 ggs. HELICOPTER 87-92-011-531
 gd. MARGUERITE 87-96-001-685
 ggd. FOLETTE 87-90-005-085

Signet Recorded Weights	100	200	300	400	500			
Last BLUP'd 10/03/2013	152	327	417	0	0			
MLC	C E(%)	C V	200M(kg)	200G(kg)	400G(kg)	Fat(mm)	MD(mm)	BV
Data EBV	-8.5	LM-4C	-3	+29	+41	-0.3	+3.1	LM+23
Acc %	54	62	52	64	60	47	58	64
BLCS Index	63	75	87	111	105	112	106	101

WILLOWVALE HERNANDEZ is a stylish young bull. **Betti** (*dam*) is a very milky cow.

Lot J W Fieldson
47 FIELDSON HOBNOB
 FCE12-944 Born 08/01/12 UK 140653/300944
 ggs. SYMPA 48-01-006-969
 gs. HALTCLIFFE BRAVO RPO6-575
 ggd. RONICK RICOLE DY00-078

Sire *FIELDSON ERASURE FCE09-739
 ggs. NENUPHAR 87-97-011-143
 gd. FIELDSON ALEX FCE05-421
 ggd. FIELDSON OXYGEN FCE98-331
 ggs. IMPERIAL 87-93-000-421
 gs. GOLDIES UPPERCRUST GS03-549
 ggd. EMUE 19-89-010-238

Dam FIELDSON CINDERELLA FCE07-550
 ggs. BROADMEADOWS CANNON CAVC-031
 gd. EDEN NATASHA HCS97-074
 ggd. BIRTLES DAISY NLD-029

Signet Recorded Weights	100	200	300	400	500			
Last BLUP'd 10/03/2013	208	362	505	655	0			
MLC	C E(%)	C V	200M(kg)	200G(kg)	400G(kg)	Fat(mm)	MD(mm)	BV
Data EBV	-3.9	LM-2C	-1	+42	+79	-0.3	+4.9	LM+40
Acc %	59	58	43	71	66	41	62	71
BLCS Index	92	84	99	127	132	112	121	129

FIELDSON HOBNOB has power, shape and great legs and carries a top 2% Beef Value of LM+40. **Eden Natasha** (*gdam*) is also the mother of **Fieldson Alfy** 37,000gns Carlisle October 2006.

Lot Richard L Hall
48 WALGATE HUGUENOT
 HTI12-001 Born 08/01/12 UK 133985/700016 Got by AI
 ggs. DAIM 19-88-005-833
 gs. GLENROCK ONSLOW IE98-445
 ggd. RACHELS LESLEY WT95-780

Sire *RAINBOW SIMON WIM01-013
 ggs. HARTSIDE HENSINGHAM TW92-545
 gd. ROMBALDS NAN RCE97-061
 ggd. ROMBALDS JENIFER RCE94-016
 ggs. VELINO 19-84-000-886
 gs. DOMINO 19-88-001-780
 ggd. ORCHIDEE 19-78-005-566

Dam RONCE 19-30-728-493
 ggs. DISCO 19-88-003-992
 gd. JEANNOU 19-94-004-906
 ggd. SIRENE 19-81-001-318

Signet Recorded Weights	100	200	300	400	500			
Last BLUP'd 10/03/2013	170	310	432	564	0			
MLC	C E(%)	C V	200M(kg)	200G(kg)	400G(kg)	Fat(mm)	MD(mm)	BV
Data EBV	-1.5	LMOC	-2	+29	+60	-0.1	+3.7	LM+30
Acc %	61	62	60	65	64	59	64	65
BLCS Index	107	101	93	111	118	99	111	113

Lot J W Fieldson

49 FIELDSON HUMMER

FCE12-946

Born 10/01/12

UK 140653/500946

ggs. SYMPA 48-01-006-969

gs. HALTCLIFFE BRAVO RP06-575

ggd. RONICK RICOLE DY00-078

Sire *FIELDSON ERASURE FCE09-739

ggs. NENUPHAR 87-97-011-143

gd. FIELDSON ALEX FCE05-421

ggd. FIELDSON OXYGEN FCE98-331

ggs. IMPERIAL 87-93-000-421

gs. GOLDIES UPPERCRUST GSO3-549

ggd. EMUE 19-89-010-238

Dam FIELDSON DELIA FCE08-616

ggs. MERESIDE RUFUS HCG00-009

gd. FIELDSON TRINITY FCE02-176

ggd. FIELDSON OXTAIL FCE98-334

Signet Recorded Weights	100	200	300	400	500				
Last BLUP'd 10/03/2013	167	292	438	572	0				
MLC	C E(%)	C V	200M(kg)	200G(kg)	400G(kg)	Fat(mm)	MD(mm)		BV
Data EBV	-2.7	LM-2C	-4	+25	+55	-0.3	+2.1		LM+28
Acc %	58	57	41	70	66	41	61		70
BLCS Index	99	86	81	107	115	112	98		109

FIELDSON HUMMER is an outstanding bull with great conformation, a fantastic topline and wonderful temperament.

Lot Messrs Ridley

50 HALTCLIFFE HANK

RP12-1105

Born 12/01/12

UK 100996/701105

Got by AI

ggs. PENYRHEOL SAM PCU01-216

gs. HALTCLIFFE VERMOUNT RP04-042

ggd. RENONCULE 19-30-708-827

Sire *HALTCLIFFE DYNAMO RP08-747

ggs. OASIS 19-30-378-230

gd. CLOUGHHEAD ROMANY HCX00-051

ggd. CLOUGHHEAD NOVELTY HCX97-213

ggs. OCTOPUS 87-10-671-030

gs. SYMPA 48-01-006-969

ggd. OPERETTE 48-98-133-040

Dam HALTCLIFFE BRITNEY RP06-545

ggs. MUNSTER 87-96-014-089

gd. RESITA 19-30-916-307

ggd. HAMMEL 19-92-007-335

Signet Recorded Weights	100	200	300	400	500				
Last BLUP'd 10/03/2013	171	326	473	0	0				
MLC	C E(%)	C V	200M(kg)	200G(kg)	400G(kg)	Fat(mm)	MD(mm)		BV
Data EBV	-3.0	LM-2C	0	+26	+47	-0.4	+2.5		LM+26
Acc %	59	66	48	74	69	61	70		73
BLCS Index	97	88	104	108	109	119	101		105

Lot P Fletcher
51 SIDDALL HARLEY
 FZ12-005 Born 12/01/12 UK 183150/500281 Got by AI
 ggs. LEO 23-95-071-399
 gs. NENUPHAR 87-97-011-143
 ggd. GIROFLEE 87-91-000-077

Sire NEBO AMAZON TFQ05-010
 ggs. GAULOIS 19-91-012-150
 gd. NEBO ROBERTA TFQ00-002
 ggd. HYDESVILLE HIGHNESS PR92-276
 ggs. BUFFALO 36-86-005-781
 gs. GENUS HIDALGO 37-92-007-027
 ggd. ULLA 36-83-001-599

Dam SIDDALL TOPAZ FZ02-003
 ggs. RONICK HAWK DY92-026
 gd. SIDDALL OPAL FZ98-005
 ggd. SIDDALL IVY FZ93-008

Signet Recorded Weights	100	200	300	400	500			
Last BLUP'd 10/03/2013	153	267	387	0	0			
MLC	C E(%)	C V	200M(kg)	200G(kg)	400G(kg)	Fat(mm)	MD(mm)	BV
Data EBV	-3.6	LM+1C	-1	+17	+35	-0.4	+2.8	LM+26
Acc %	61	68	49	73	69	47	65	72
BLCS Index	93	106	99	97	101	119	103	105

Lot
52 WITHDRAWN

Lot J C G Bloom & Son
53 SCORBORO HECTOR
 BEA12-441 Born 28/01/12 UK 142543/400441 Got by AI
 ggs. OCTOPUS 87-10-671-030
 gs. SYMPA 48-01-006-969
 ggd. OPERETTE 48-98-133-040

Sire *HALTCLIFFE BEN RP06-585
 ggs. LUDO 19-95-012-472
 gd. RENONCULE 19-30-708-827
 ggd. LOTTE 19-95-016-975
 ggs. RONICK UPSHOT DY03-545
 gs. SCORBORO ARAMIS BEA05-214
 ggd. SCORBORO REDLADY BEA00-028

Dam SCORBORO ECHINOPS BEA09-357
 ggs. NORMANDE JUDGE CAX94-037
 gd. SCORBORO RHODORA BEA00-017
 ggd. ROUGHLEY DAHLIA SBGD-024

Signet Recorded Weights	100	200	300	400	500			
Last BLUP'd 10/03/2013	181	338	490	645	0			
MLC	C E(%)	C V	200M(kg)	200G(kg)	400G(kg)	Fat(mm)	MD(mm)	BV
Data EBV	-6.5	LM-4C	0	+47	+86	0	+5.4	LM+45
Acc %	63	69	47	73	74	65	71	75
BLCS Index	75	74	104	132	137	92	125	137

SCORBORO HECTOR is semen tested and DNA sire verified.

Lot E Blenkhorn & Son
54 ELDERBERRY HAVANA
 BQH12-003 Born 01/02/12 UK 142417/300496
 ggs. PHLEX 02-00-801-274
 gs. UVERGNY 02-00-801-723
 ggd. ORFONDRUE 02-98-110-415

Sire BAKOU 19-32-629-086
 ggs. MARECHAL 15-96-056-227
 gd. TATA 19-31-451-485
 ggd. NORA 19-97-013-506
 ggs. ORME 19-30-157-122
 gs. TOUCAN 19-31-211-178
 ggd. MANILLE 19-96-002-090

Dam BUCHETTE 19-32-809-728
 ggs. NODULEUX 19-97-003-803
 gd. VIRGINIE 19-31-869-428
 ggd. NICOLE 19-97-007-992

Signet Recorded Weights	100	200	300	400	500			
Last BLUP'd 10/03/2013	195	363	526	0	0			
MLC	C E(%)	C V	200M(kg)	200G(kg)	400G(kg)	Fat(mm)	MD(mm)	BV
Data EBV	-3.1	LMOC	-1	+23	+37	-0.1	+1.9	LM+22
Acc %	42	41	21	61	52	17	47	60
BLCS Index	97	98	99	104	102	99	96	100

ELDERBERRY HAVANA offers a new bloodline to the UK and comes from an outstanding dam line; three generations of which were imported by the herd due to their quality. For further information and pictures, visit www.elderberrylimousins.co.uk

Lot	Messrs Ridley									
55	HALTCLIFFE HUNTER									
	RP12-1108		Born 12/02/12		UK 100996/301108					
			ggs. ULTRABEAU 23-03-330-381							
			gs. ACAJOU 19-32-348-458							
			ggd. SAUTERELLE 19-31-107-853							
Sire	*ESTEBAN 19-33-405-605									
			ggs. NEUF 22-97-004-114							
			gd. AGNES 19-32-305-125							
			ggd. ROMANCE 19-30-708-783							
			ggs. PETUNIA 87-00-670-240							
			gs. CLOUGHHEAD UMPIRE HCX03-221							
			ggd. GASCOGNE 23-91-060-414							
Dam	HALTCLIFFE DIVA RP08-724									
			ggs. SYMPA 48-01-006-969							
			gd. HALTCLIFFE VICTORIA RP04-034							
			ggd. SAPHO 19-30-818-413							
Signet Recorded Weights	100	200	300	400	500					
Last BLUP'd 10/03/2013	181	334	477	0	0					
MLC	C E(%)	C V	200M(kg)	200G(kg)	400G(kg)	Fat(mm)	MD(mm)		BV	
Data EBV	-7.1	LM+2C	0	+39	+60	0	+5.5		LM+35	
Acc %	53	50	38	71	64	60	67		69	
BLCS Index	71	82	104	123	118	92	126		121	

Lot	Messrs Ridley									
56	HALTCLIFFE HUDSON									
	RP12-1109		Born 14/02/12		UK 100996/401109					
			ggs. DAUPHIN 19-88-004-715							
			gs. OBJAT 19-30-299-413							
			ggd. MELODIE 19-96-004-346							
Sire	*CLOUGHHEAD ERNIE HCX09-620									
			ggs. CLOUGHHEAD JURASSIC HCX94-131							
			gd. CLOUGHHEAD NANCY HCX97-200							
			ggd. CLOUGHHEAD JUDY HCX94-091-FOT							
			ggs. PETUNIA 87-00-670-240							
			gs. CLOUGHHEAD UMPIRE HCX03-221							
			ggd. GASCOGNE 23-91-060-414							
Dam	HALTCLIFFE EDEN RP09-820									
			ggs. HALTCLIFFE NOVEL RP97-016							
			gd. HALTCLIFFE AMAZON RP05-034							
			ggd. HALTCLIFFE UPPERTY RP03-008							
Signet Recorded Weights	100	200	300	400	500					
Last BLUP'd 10/03/2013	154	287	416	0	0					
MLC	C E(%)	C V	200M(kg)	200G(kg)	400G(kg)	Fat(mm)	MD(mm)		BV	
Data EBV	-0.3	LM+2C	+1	+18	+40	-0.3	+2.1		LM+26	
Acc %	59	59	42	72	67	61	69		71	
BLCS Index	114	111	110	98	104	112	98		105	

Lot P Fletcher

57 SIDDALL HARRY

FZ12-010

Born 03/03/12

UK 183150/500288

ggs. DAUPHIN 19-88-004-715

gs. OBJAT 19-30-299-413

ggd. MELODIE 19-96-004-346

Sire SIDDALL DREW FZ08-004

ggs. RONICK HAWK DY92-026

gd. SIDDALL VAZIE FZ04-003

ggd. SIDDALL SNAZIE FZ01-013

ggs. ROUGHLEY CAPRICORN SBCC-002

gs. WINTLES OAK BA98-004

ggd. WINTLES JULIE BA94-015

Dam SIDDALL SONG FZ01-010

ggs. BRACKENBANK FALSTAFF CANF-082

gd. SIDDALL MONNIE FZ96-003

ggd. SIDDALL CONNIE FZC-003

Signet Recorded Weights	100	200	300	400	500			
Last BLUP'd 10/03/2013	170	310	450	0	0			
MLC	C E(%)	C V	200M(kg)	200G(kg)	400G(kg)	Fat(mm)	MD(mm)	BV
Data EBV	-2.4	LM-2C	+2	+31	+56	-0.1	+3.7	LM+34
Acc %	57	56	47	73	68	44	64	71
BLCS Index	101	88	116	114	116	99	111	119

Premium
Cattle
Health
Scheme



SAC

Consultancy Services
Disease Control
& Eradication for
Johne's • BVD
• IBR • Leptospirosis



CHeCS licensed / all tests ISO 17025 accredited

- Remove costly disease from your herd
- Provide health assurance for your customers
- Safeguard the health status of your herd



Contact: SAC Veterinary Services
Greycrook, St Boswells, Roxburghshire, TD6 0EU
T: 01835 822456 E: vcstboswells@sac.co.uk
www.sac.ac.uk/cattlehealth

Alphabetical Bull Index

(All bulls marked * in the pedigrees are included in the reference)

ATTIRANT (23-06-751-274) Sire – Usty, dam – Superbe (by Mas Du Clo). Won best stock bull at the 2011 National Herd Competition. He produces calves with exceptional width through the back, hips and pins. Progeny includes Garnead Fantastic 10,000gns Carlisle Oct 2011. Netherhall Goliath 17,000gns and Garnead Ferrari 10,000gns Carlisle May 2012. Garnead Grant 12,000gns Carlisle Oct 2012. Carmorn Gaga 7,200gns Red Ladies Derby Carlisle Dec 2012. Dolcorsllwyn Greta 5,800gns Carlisle Feb 2013.

BAHUT (87-53-841-575) Sire – Uruguay, dam – Norvegienn (by Hatelet). Espoir Champion French National Show 2010 & Muscle Champion, Brive Show 2010. Breeding exceptionally square progeny.

BOUQUET (19-32-649-555) Sire – Tamis, dam – Sirene (by Officer). Imported from Lanaud test station for 14,000 Euros Jan 2008. He is a powerful well muscled bull with lovely bloodlines, superb muscle, growth and milk on both dam and sire pedigree.

BREMORE ARTIST (IE171088870160) Sire - Nenuphar, dam - Samba (by Obligeant). Progeny includes Glenrock Dictator 10,000gns Carlisle Oct 2009. Glenrock Fandango 10,000gns Carlisle May 2012. Ballynahone Gigolo 8,000gns Carlisle May 2013

CULNAGECHAN BULLSEYE (HQG06-018) sire – Cloughhead Lord, dam – Ballydonaght Nightingale (by Mereside Filipo), Progeny includes Crossdykes Goliath 18,000gns Carlisle Oct 2012.

CLOUGHHEAD ERNIE (HCX09-620) Sire – Objat, dam – Cloughhead Nancy (by Cloughhead Jurassic). Purchased for 34,000gns Carlisle May 2012. Progeny includes Haltcliffe Goa 6,000gns Carlisle June 2012, Haltcliffe Gallardo 12,000gns Carlisle February 2013.

CLOUGHHEAD UMPIRE (HCX03-221) Sire Petunia, dam - Gascogne (by Espagnol). Umpire was purchased for 42,000gns Feb 2005 to join the Haltcliffe herd. Progeny includes Hafodlas Cymro (aged 11 months) 6,200gns Carlisle Weaned Calf Sale Dec 2007; Haltcliffe Brazil Junior & Reserve Overall Champion 22,000gns Carlisle Feb 2008 and joined the Raysonhall Herd, Haltcliffe Bentley 7,500gns Carlisle Feb 2008. Seven sons sold Carlisle Feb 2008 to average £8,039. Haltcliffe Braveheart Reserve Junior Champion sold for half share for 25,000gns Carlisle May 2008, Haltcliffe Chico 15,000gns Carlisle May 2008, Culnagechan Bandit 7,000gns Carlisle May 2008, Overthwaite Crackerjack 16,000gns, Homebyres Consort 10,000gns, Overthwaite Count 8,200gns Carlisle Feb 2009. Burndale Cyclone 14,000gns Carlisle May 2009. Pembridge Delboy 14,000gns Carlisle Oct 2009. Haltcliffe DJ 72,000gns & Overall Male Champion, Plumtree Deus 35,000gns Carlisle Feb 2010. Haltcliffe Dynasty 28,000gns Haltcliffe Sale May 2010. Haltcliffe Dollar 6,500gns, Haltcliffe Delia 5,500gns, Haltcliffe Duet 5,000gns, Haltcliffe Doreen 5,000gns Haltcliffe Sale May 2010. Myfyrian Exit 11,000gns, Haltcliffe Eureka 7,500gns & Haltcliffe Enzo 7,500gns Carlisle Oct 2010. Haltcliffe Exocet 8,500gns, Haltcliffe Egidius 8,000gns Carlisle Feb 2011. Haltcliffe Flower 15,000gns, Haltcliffe Fyne 10,000gns Haltcliffe Sale July 2011. Plumtree Filbert 14,000gns Carlisle Feb 2012. Haltcliffe Fencer 18,000gns and Haltcliffe George 10,000gns Carlisle May 2012. Haltcliffe Franc 7,000gns, Haltcliffe Groovy 7,000gns, Haltcliffe Glee 5,500gns & Haltcliffe Garland 5,000gns Carlisle June 2012. Beachmount Goodgirl 5,500gns Red Ladies Derby Carlisle Dec 2012, Gorrycam Hazzard 26,000gns Carlisle May 2013.

DOLCORSLLWYN BRYNMOR (VU06-012) Sire – Nenuphar, dam – Dolcorsllwyn Patsi (by Broadmeadows Cannon). Sold for 32,000gns Carlisle Feb 2008. Progeny includes Gunnerfleet Felix 11,500gns & Gunnerfleet Fanfare 8,000gns Carlisle Feb 2012

ELDORADO (19-33-491-015) Sire – Neuf, dam – Torride (by Omer). Purchased privately in France from Gaec Boudarias. Reserve Intermediate Champion, National Limousin Show 2011.

ESTEBAN (19-33-405-605) Sire – Acajou, dam – Agnes (by Neuf). Progeny includes Haltcliffe Genial 12,000gns Carlisle May 2013.

FIELDSON ALFY (FCE05-384) Sire - Gunnerfleet Plunas, dam - Eden Natasha (by Broadmeadows Cannon). Sold for 37,000gns Carlisle Oct 2006. Progeny includes Sarkley Dynamic 13,000gns, Kype Denver 8,000gns Carlisle Oct 2009. Sarkley Dalola 25,000gns Sarkley Youngstock Sale Nov 2009. Ringway Daphne 13,000gns Red Ladies Derby 2009. Netherhall Doubleseven 20,000gns, Netherhall Dangermouse 8,000gns Carlisle May 2010. Glenrock Eagle 10,000gns Carlisle Feb 2011. Netherhall Ferry 10,000gns, Proctors Explosive 8,000gns Carlisle May 2011. Dolcorsllwyn Fabio Sold for a new World and Breed record price animal sold for 120,000gns Carlisle Feb 2012 to Messrs Jenkinson, Whinell Park Herd.

FIELDSON ERASURE (FCE09-739) Sire – Haltcliffe Bravo, dam – Fieldson Alex (by Nenuphar). Erasure was the outstanding bull of the 2009 crop – unfortunately he had to be slaughtered after breeding only four sons – one of which is being retained as a stock bull.

GLANGWDEN BIGBOY (JBW06-618) Sire – Haltcliffe Ullswater, dam – Paluche (by Jacot). Progeny includes Norman Drover was YLBC Calf Champion Dec 2009 selling for 4,000gns aged 6 months. Norman Gentle 7,200gns Carlisle June 2012, Norman Gus 9,000gns to the Loosebeare Herd, Carlisle October 2012.

HALTCLIFFE BEN (RP06-585) Sire – Sympa, dam – Renoncule (by Ludo). Sold for 14,000gns Carlisle May 2006. Progeny includes Pyebrook Foxy 13,500gns, Pyebrook Euin 8,000gns,

HALTCLIFFE DYNAMO (RP08-747) Sire – Haltcliffe Vermont, dam – Cloughhead Roamny (by Oasis). Sold for 15,000gns Carlisle February 2010.

HALTCLIFFE DJ (RP08-755) Sire – Cloughhead Umpire, dam – Radio (by Nenuphar). Supreme Champion Carlisle February 2010, sold for 72,000gns. Progeny includes Procters General Senior Male champion and sold for 21,000gns and Procters Gunner Reserve senior Male Champion and sold for 15,000gns Carlisle Oct 2012. Netherhall Gilbert 8,500gns Carlisle Feb 2013.

HIGHLANDER (16-92-111-209) Sire – Villy, dam – Barone (by Vercors). The most extensively used bull in France, owned by Sersia.

IRONSTONE COLONEL (SDS07-069) sire – Wilodge Vantastic, dam – Wilodge Relisa (by Brontemoor Ilkley). Progeny includes Bankdale Freeman 15,000gns Carlisle May 2011. Bankdale Everready 13,000gns, Bankdale Ferrari 6,000gns, Bankdale Florette 5,500gns, Bankdale Freesia 5,200gns and Bankdale Fred 5,000gns Bankdale dispersal sale Carlisle July 11.

MARRON (JAG00-030) Sire – Impair, dam – Fraise (by Tarvis). Progeny include Bailea Redman 5,500gns Carlisle May 2002. Bailea Scoobydoo 11,500gns, Bailea Steel 5,500gns, Bailea Spritzer 5,200gns, Croftlimousin Swift 5,000gns, Carlisle Feb 2003. Bailea Spunkie 22,500gns, Croftlimousin Spencer 8,000gns, Croftlimousin Squire 9,000gns, Carlisle May 2003

MOLOSKEY CLAUS (IE131477840508) Sire – Mas Du Clo, dam – Moloskey Nical (by Geant). Bought for top price of 15,000 euros, Roscrea March 2009.

OVERTHWAITE CRACKERJACK (PK07-008) Sire – Cloughhead Umpire, dam Tatania (by Papillon). Purchased for 16,000gns Carlisle February 2009. Progeny includes Coachhouse Hellebore 8,500gns, April 2013. Coachhouse Frontline 12,000gns Carlisle Feb 2012.

RAINBOW SIMON (WIM01-013) Sire – Glenrock Onslow, dam – Rombalds Nan (by Hartside Hensingham). Progeny includes – Loosebeare Voyager 14,500gns Carlisle Feb 2006; Loosebeare Amazon 9,600gns, Loosebeare Aviator 7,500gns Carlisle Oct 2006; Loosebeare Austinpowers 7,500gns Carlisle May 2007; Loosebeare Bananaman 10,000gns Carlisle May 2008, Loosebeare Catcher 8,000gns, Loosebeare Computer 11,500gns, Loosebeare Cantona 13,000gns and Senior Champion, Carlisle Feb 2009, Loosebeare Diego 20,000gns, Loosebeare Declan 10,000gns Carlisle Feb 2010.

REDROCK EDDY (DX09-335) Sire – Haltcliffe BMW, dam – Redrock Victoria (by Allanfauld Rumpus). Eddy was purchased privately and is proving to be very easy calving. He carries EBV's for birth weight in the top 1% of the breed and gestation length in the top 5% of the breed.

SEAVIEW UPSTART (MMV03-033) sire – Ocean, dam – Seaview Posh (by Greensons Gigolo). Sold for 5,000gns Carlisle May 2005. Progeny includes Brontemoor Bobbydazzler 7,500gns and Brontemoor Bangle 2,400gns both at Red Ladies Sale Carlisle December 2007.

WILODGE CERBERUS (WEY07-010) Sire – Wilodge Tonka, dam – Wilodge Priceless (by Broadmeadows Cannon). Sold for 50,000gns Carlisle Oct 2008 to join the Whinfellpark herd. Progeny includes Whinfellpark Fanzine 9,000gns & Whinfellpark Fairley 5,500gns Carlisle Weaned Calf Sale Dec 2010. Whinfellpark Fizzle 9,200gns, Whinfellpark Festive Reserve Junior male Champion and sold for 8,500gns Carlisle May 2011. Whinfellpark Flamboyant 12,000gns Intermediate Champion Carlisle Oct 2011. Whinfellpark Gateaux 5,500gns Weaned Calf sale Carlisle 2011. Ampertaine Foreman Reserve Supreme Champion Carlisle Feb 2012 Selling for 38,000gns. Wilodge Goldenmoment 10,000gns, Wilodge Gracies 8,000gns, Wilodge Goldrush 8,000gns Wilodge Goldenglow 6,000gns & Wilodge Golddust 5,000gns Carlisle June 2012. Dyfri Glynswr 8,000gns Carlisle Oct 2012. Kaprico Helen 5,000gns Weaner Calf sale Carlisle Dec 2012. Rahoney Geoffrey, reserve supreme champion and sold for 23,000gns, Goldies Gemini 9,00gns Carlisle Feb 2013

**HEALTH AND SAFETY RULES
HARRISON & HETHERINGTON LIMITED
NOTICE TO ALL VISITORS AND TRADERS
PLEASE READ AND OBSERVE
THE FOLLOWING**

All visitors and traders on site will be responsible for ensuring that they and their employees or sub-contractors engaged by them comply with all legal requirements, including the Health and Safety At Work etc., Act 1974, The Management of Health and Safety At Work Regulations, The Provision And Use of Work Equipment Regulations, etc.

All visitors and traders will be responsible for ensuring that their operations in no way affect the integrity of the company or its fire, safety or security arrangements and in no way compromise the health and safety and welfare of other visitors to and or employees of Harrison & Hetherington.

Although it is the visitors and traders responsibility to ensure that plant, equipment and systems in work are safe, Harrison & Hetherington Limited reserve the right to ask any visitor or trader to leave the market for any breaches in the Health and Safety Rules and/or Regulations.

Vendors must inform Harrison & Hetherington Limited of any livestock due to attend the market whose temperament, behaviour or condition may call for additional precautions for its safe handling.

When loading or unloading livestock handlers must ensure that the dock and vehicle gates are securely fixed so as to prevent the escape of animals.

Traders are responsible for providing and maintaining suitable livestock handling equipment. They should ensure that livestock handlers are fit, experienced in livestock handling and familiar with the livestock in their charge.

Children must not be permitted in any area where they may be at risk from livestock or machinery.

In the case of bulls, during the period when the show/sale is open to visitors, bulls in stalls or pens should not be left unattended. If the handler is temporarily absent, arrangements should be made with another vendor, steward or member of Harrison & Hetherington staff to oversee the bull until the handler returns.

Handling of Livestock at shows and sales: Harrison & Hetherington Limited recommend that an adult person should accompany any junior person during the showing/sale of livestock in the ring and reserves the right to intervene at any point if, in the company's opinion, the person showing the livestock is at risk in undertaking that activity.

Passageways must be kept clear at all times during the auction sale. **PLEASE DO NOT STAND IN THE SALE RING ENTRANCE AND EXIT PASSAGES.**

The auction ring man escapes and refuges must be kept clear at all times.

All portable electrical equipment supplied and/or used by visitors and traders must be safe and fit for the purpose and should have a valid portable appliance test certificate.

AUCTIONEER'S TERMS & CONDITIONS OF SALE

(Incorporating the Auctioneer's Terms and Conditions as recommended by the NBA)

1. The biddings to be regulated by the Auctioneers and the highest bidder, subject to the Vendor's reserve (if any), to be the purchaser. No bid shall be retracted and if any dispute should arise between two or more bidders, the Lot in dispute to be put up again and resold, or the Auctioneers may determine the dispute at their own discretion and their decision shall be final. The Auctioneers reserve the right to refuse the bid of any person without being called upon to give reason for such action.
2. The Purchaser to give his full name and dwelling place and pay for all Lots purchased immediately at the close of sale. No Lot or Lots shall be removed from the sale premises until paid for and a pass-out slip obtained from the Auctioneer's clerk but each and every Lot shall immediately at the fall of the hammer be considered as delivered and be and remain in every respect at the absolute risk and expense of the respective purchaser or purchasers thereof and shall be removed from the sale premises at the purchaser's expense. The right of property shall not pass until the full purchase price is paid.
3. Purchasers paying by cheque must be prepared, if required, to produce a banker's reference. As a result of the Money Laundering Regulations (2003) the auctioneers are unable to accept cash payments in excess of nine thousand pounds sterling for any single or linked purchase transaction.
4. All statements in the catalogue, or made by the Auctioneers at the time of sale, also the correct identification of the animals, are the entire responsibility of the Vendors. The Auctioneers take no personal responsibility for the correctness of such statements or identities.
5. All statements in the catalogue, or any made by the Auctioneers at the time of sale relating to any veterinary or other tests are to be taken as statements of fact only. No such statements shall guarantee the purchaser of any animal against loss arising from the subsequent reaction of such animal to any test administered after the sale and the Vendors shall not be liable in any way should this occur.
6. All stock is sold subject to the Conditions of Sale recommended for use at markets by the Livestock Auctioneers' Markets Committee for England and Wales except in so far as these conflict with any Special Conditions applicable to the sale of pedigree stock, when the latter Conditions shall prevail.
7. Neither the Vendors nor the Auctioneers will be responsible for any accident or injury to persons or property, through fire or any other cause whatsoever, nor for any damage by animals prior to, during or after the sale.
8. No undertaking by the Auctioneers or their servants to take charge of any Lot or Lots after the sale or to forward them to their destination shall be held to impose upon the Auctioneers any legal obligation or vitiate any of these Conditions.
9. Inasmuch as the Auctioneers act as agents for a disclosed principal they shall not be considered personally responsible for any default on the part of either purchasers or Vendors and the remedy shall be against them only and not against the Auctioneers.
10. If these conditions are unfulfilled, the Vendors or Auctioneers shall have the power to resell the Lots, retaining any surplus and charging any deficiency and expense to the defaulter.
11. You have a right to know how we will use the information you have provided to us. We may share the information with other members of our group and may make this information available to relevant media groups and other interested parties on request. We and other members of the group may contact you by telephone, e-mail, post or fax to inform you of products or services available. If you do not want to be contacted for marketing purposes or do not wish your information to be made available to any other parties please notify us in writing.

HARRISON & HETHERINGTON LTD

Two fantastic premium bulls from Cogent's Signature Beef range



↑ Wilodge GOLDCARD

Wilodge GOLDCARD

Sire: Wilodge Cerberus

Dam: Sarkley Bellola



- Combination of definition and power
- Star quality pedigree
- Carrying a beef value of 39



↑ Anside FLINT

Anside FLINT

Sire: Frewstown Breakdance

Dam: Anside Veronica



- Offering a total outcross pedigree
- Outstanding correctness and mobility
- Carrying a beef value of 35

Freephone: 0800 783 7258

www.cogentuk.com | Find us on: 

