

**BRITISH LIMOUSIN CATTLE SOCIETY**

**AUTUMN SHOW & SALE**

**Dungannon, Northern Ireland**



**Autumn Show and Sale of Bulls and Females**

Sponsored by **Norbrook**<sup>®</sup>   
Pharmaceuticals Worldwide

Under Society Rules & NBA Terms & Conditions of Sale

**FRIDAY 17TH NOVEMBER 2017**  
**DUNGANNON LIVESTOCK MART**

**Judging 10am**

**Auction 1pm.**

Printed by Minprint (028) 90705205

**£1**

LIMOUSIN

# LIMOUSIN

when you weigh it all up



Quality Sucklers

Quality Beef

No. 1  
on  
both  
sides  
of the  
scale



**LIMOUSIN ...  
the top maternal and  
the top terminal sire**

# **The Northern Ireland Limousin Cattle Club Sale Arrangements**

**Judge:** Michael Gunn

**Vet:** Parklands Vets, Dungannon

**Inspectors:** Derek Frew and Henry Savage

**Stewards:** N.I. Limousin Cattle Club Committee

**BLCS Rep:** Derek Frew and Henry Savage

**Sponsors:**  **Norbrook**<sup>®</sup>  
Pharmaceuticals Worldwide

**Club Chairman:** Alan Geary

**Club Secretary:** Shirley Fleming 07881 435042  
Email: nilimousincattleclub@gmail.com

## **ARRANGEMENTS FOR STOCK** ***Friday 17th November 2017***

**– Centre Open 6.30am –**

**Inspection will take place between 7.00am and 9.00am**

**Show starts 10.00am**

**Cattle must be presented for inspection before 9.00am after which time  
a fee of £20 will be charged by the Vet to the Exhibitor.**

**Auction 1.00pm**

**Upset Price: 800gns females**

**Upset Price for Bulls 1,800gns**



## LIMOUSIN PERFORMANCE RECORDING

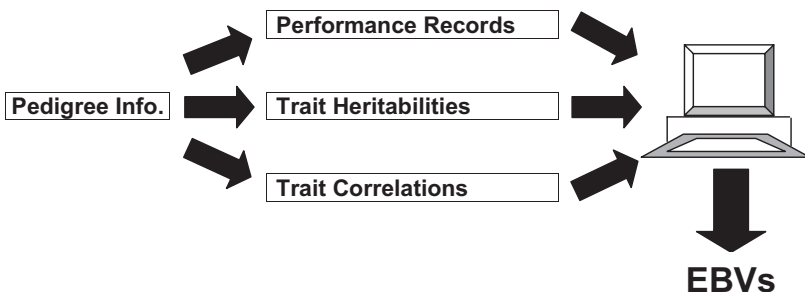
### HOW TO USE LIMOUSIN BREEDING VALUES

#### ESTIMATED BREEDING VALUES (EBVs) & GENOMIC BREEDING VALUES (GEBVs)

#### 1. What Are EBVs?

Many factors influence the appearance and performance of a bull. For example, age, nutrition, management, age of dam, health, season, quality of farm and the genes it has inherited from its parents. The only factor that can be passed on to its calves, however, is its inherited genetic potential. Estimated Breeding Values are measures of that potential and are calculated from the following:

- Measurements from the animal itself
- Measurements from the animal's herd mates (known as 'contemporaries')
- Measurements from the animal's relatives and their contemporaries
- The degree to which one trait influences another (known as a 'correlation')
- The degree to which each trait is passed on to the next generation (known as 'heritability')



## 2. What Are GEBVs?

In March 2016, Genomic Breeding Values (GEBVs) became available for all Limousin cattle for a range of new Carcase Traits. In July 2017, GEBVs also became available for three new Female Fertility traits and Calf Survival. They are the first of their kind within the UK's beef sector and are the result of five years of research between British Limousin Cattle Society, ABP Food Group and SRUC.

**GEBVs take conventional EBVs a step further by using information from animals' DNA as well as the usual measurements of performance.** To produce the breeding value the DNA is compared to a DNA 'key' for the breed:

This key is created from a core population of Limousin animals that have been measured on-farm and in the abattoir as well as having DNA collected

The key is like a library that cross refers information from the DNA strand with different levels of abattoir performance.

GEBVs are produced by comparing the DNA of an animal with the key. They are calculated from the correspondence of that animal's DNA with those in the library

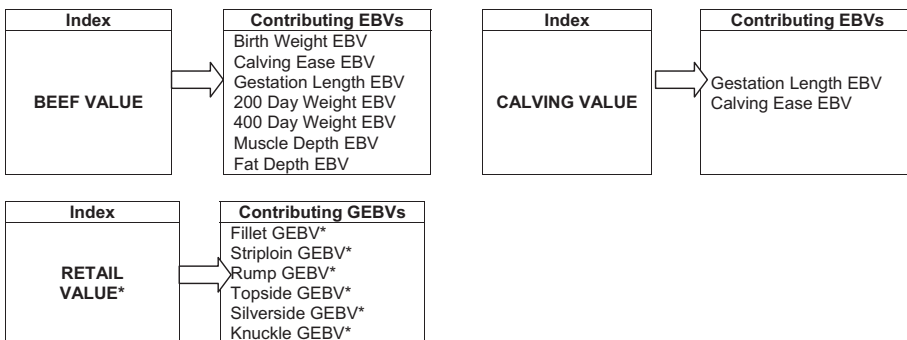
### GEBVs are used in exactly the same way as EBVs...

Albeit they are produced in slightly different ways GEBVs are in essence breeding values that indicate genetic merit as EBVs do and the way the two are used should not differ (see paragraph 5 below).

## 3. What Are Breeding Indexes?

It is often desirable to select animals on the basis of more than one EBV/GEBV. Breeding Indexes focus on specific breeding goals and combine the appropriate EBVs/GEBVs in to a single figure based on their relative economic value. This is widely regarded as the most efficient method of selecting on a number of traits at once.

Three Breeding Indexes are available at sales, as follows:



\* GEBVs available for animals that have been genotyped for this purpose and where the values have been published by the owner.

**When using an Index it is important that your breeding objective is broadly similar to that of the Index in question, otherwise you may unwittingly change aspects of your herd that you did not necessarily want to.**

## 4. What Breeding Value Information Is Available?

In sale catalogues, EBVs & GEBVs are produced for up to eighteen traits that focus on an animal's economic performance.

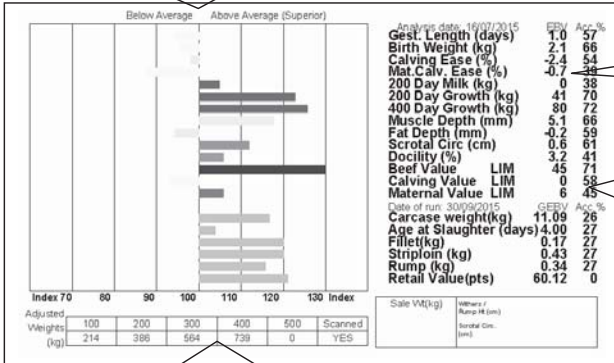
Trait	Breeding Value Indicates...	Look for...
<b>Birth Weight (kg)</b>	Genetic potential for calf weight at birth	<b>High negative EBVs</b> if you want low calf birth weights
<b>Calving Ease (%)</b>	Ease with which a bull's progeny will be born	<b>High positive EBVs</b> if you want less assisted calvings
<b>Maternal Calving Ease (%)</b>	Ease with which a bull's daughters will calve	<b>High positive EBVs</b> if you want less assisted calvings
<b>Gestation Length (days)</b>	Genetic potential for gestation length	<b>High negative EBVs</b> if you want short gestation lengths
<b>200 Day Milk (kg)</b>	The maternal component of 200 day growth (i.e. the contribution that the milking and maternal abilities of a bull's daughters make towards their calves' growth at 200 days of age)	<b>High positive EBVs</b> if you want daughters to wean heavier calves
<b>200 Day Weight (kg)</b>	Genetic potential for growth from birth to 200 days of age	<b>High positive EBVs</b> if you want high growth rates to weaning
<b>400 Day Weight (kg)</b>	Genetic potential for growth from birth to 400 days of age	<b>High positive EBVs</b> if you want high growth rates to finishing
<b>Muscle Depth (mm)</b>	Genetic potential for muscularity and potential to increase lean meat yield	<b>High positive EBVs</b> if you want good calf conformation
<b>Fat Depth (mm)</b>	Genetic potential for leaner carcasses	<b>Negative EBVs</b> if you want to produce leaner carcasses or take calves to heavier weights without penalty for fatness
<b>Age at 1<sup>st</sup> Calving (days)</b>	Genetic potential for early sexual maturity	<b>High negative EBVs</b> for a greater proportion of heifers that hold to 1 <sup>st</sup> service
<b>Calving Interval (days)</b>	Genetic potential for the time taken to get back in calf	<b>High negative values</b> to breed cows that get back in calf quickly
<b>Docity (%)</b>	Genetic potential for being calm when handled	<b>High positive values</b> for animals that are likely to be more calm when handled
<b>Scrotal Circumference (cm)</b>	Genetic potential for scrotal size. Linked to male serving capacity and puberty of daughters.	<b>High positive values</b> for animals with higher likely serving capacity and earlier maturing daughters.
<b>Age to Slaughter GEBV (days)</b>	Age at slaughter assuming a standard carcass weight of 350kgs	<b>High negative values</b> (less days) for animals that will reach 350 kg deadweight quicker
<b>Carcass Weight GEBV (kg)</b>	Carcass weight at a standard slaughter age of 600 days	<b>High positive values</b> for animals that will reach heavier carcass weights at 600 days of age
<b>Fillet GEBV (kg)</b>	Weight of fillet at a standard slaughter age of 600 days and carcass weight of 350kg	<b>High positive values</b> for higher fillet weights in the carcass
<b>Striploin GEBV (kg)</b>	Weight of striploin at a standard slaughter age of 600 days and carcass weight of 350kg	<b>High positive values</b> for higher striploin weights in the carcass
<b>Rump GEBV (kg)</b>	Weight of rump at a standard slaughter age of 600 days and carcass weight of 350kg	<b>High positive values</b> for higher rump weights in the carcass

**Breeding values for further traits for each animal are available on [www.taurusdata.co.uk](http://www.taurusdata.co.uk).** Enter animal name or ear number in the Quick Search box. You can also search by breeder and by breeding values ('Breeder Search' and 'EBV Search'). The additional traits available are:

- Longevity EBV & GEBV
- Silverside EBV & GEBV
- Calf Survival EBV & GEBV
- Topside EBV & GEBV
- Knuckle EBV & GEBV

EBVs & GEBVs are expressed in the same unit as the recorded trait (eg kgs for 400 Day Weight, mm for Muscle Depth etc) are relative to the Breed Average. In sale catalogues, Breed Average for each trait is represented by the vertical line that is central on the bar chart. Bars that lie to the right of that line indicate EBVs/GEBVs that are above average. The further to the right they lie, the higher above Breed Average they are. Equally, bars that lie to the left of the line indicate EBVs/GEBVs that are below Breed Average. The further to the left they are, the further below Breed Average they are. An example is as follows:

The central line represents Breed Average for each trait



EBV & GEBV values are shown & can be used to refine comparison with the breed using the Benchmark below

Accuracy: Accuracy Values are expressed as a % and indicate the quantity and quality of records used to produce each EBV, GEBV or Index. The closer they are to 100%, the more accurate the EBV. Highly accurate values are less likely to change over time.

Adjusted weights are the 'raw' weights recorded for the animal, adjusted to the nearest 100 days. No adjustment has been made to account for the effects of the environment, feeding etc.

The numeric EBV & GEBV values on the charts can be used to further refine comparison with the breed using the Breed Benchmark below. This is updated annually.



## 2017 Limousin Breed Benchmark

Trait	Bottom			Breed Avg	Top		
	1%	10%	25%		25%	10%	1%
Birth Weight (kg)	3.9	3.0	2.4	1.8	1.1	0.6	-0.4
Calving Ease (%)	-5.9	-4.3	-3.3	-2.2	-1.2	-0.2	1.4
Mat. Calv. Ease (%)	-1.5	-0.8	-0.4	0.0	0.5	0.9	1.6
Gest. Length (days)	4	2	1	0	-1	-2	-3
<b>Calving Value</b>	<b>LM-4C</b>	<b>LM-2C</b>	<b>LM-1C</b>	<b>LM1C</b>	<b>LM2C</b>	<b>LM3C</b>	<b>LM5C</b>
200 Day Growth (kg)	-1	10	16	23	30	36	46
400 Day Growth (kg)	-1	18	29	42	54	66	85
Muscle Depth (mm)	-0.9	0.8	1.7	2.8	3.9	4.9	6.6
Fat Depth (mm)	-0.5	-0.3	-0.2	-0.1	0.0	0.1	0.3
<b>Beef Value</b>	<b>LM4</b>	<b>LM13</b>	<b>LM18</b>	<b>LM24</b>	<b>LM30</b>	<b>LM36</b>	<b>LM45</b>
200-Day Milk (kg)	-5	-3	-2	-1	0	1	3
Age 1st Calv. (days)*	46.2	33.5	26.1	17.8	9.6	2.2	-10.6
Longevity (rel. no calves born to 6.5 yrs)*	-0.14	-0.08	-0.06	-0.02	0.01	0.04	0.09
Calv. Interval (days)*	8.7	4.7	2.3	-0.4	-3.0	-5.4	-9.5
Calf Survival (probability to 10 mths)*	-4	-3	-2	-1	0	1	2
Scrotal Circ. (cm)	-0.6	-0.2	0.0	0.3	0.5	0.7	1.1
Docility (%)	-1.6	0.3	1.3	2.5	3.7	4.8	6.7
Carcase Wt (kg)*	-7.5	-2.3	0.8	4.2	7.7	10.7	16.0
Slaught. Age (days)*	24	16	12	7	2	-3	-11
Fillet (kg)*	0.03	0.07	0.09	0.12	0.15	0.17	0.22
Striploin (kg)*	0.01	0.14	0.22	0.31	0.4	0.48	0.61
Topside (kg)*	0.18	0.43	0.57	0.73	0.9	1.04	1.29
Rump (kg)*	0.07	0.21	0.29	0.38	0.46	0.54	0.68
Silverside (kg)*	0.14	0.45	0.63	0.83	1.02	1.2	1.51
Knuckle (kg)*	0.05	0.18	0.26	0.35	0.44	0.52	0.66
<b>Retail Value*</b>	<b>LM1R</b>	<b>LM10R</b>	<b>LM15R</b>	<b>LM21R</b>	<b>LM27R</b>	<b>LM32R</b>	<b>LM41R</b>

## 6. Things to Consider...

- To establish just how much influence a bull will pass on to his progeny it is important to remember to halve the value of the EBV/GEBV, since the other half of a calf's genes comes from the cow.

For example, a bull with a 400-Day Growth EBV of +62 is estimated to have the genetic potential to be 62kg heavier at 400 days of age compared to a bull with an EBV of 0. His calves would be expected to be 31kg heavier at that age when compared to calves by a bull with an EBV of 0, since they only inherit half of their growth genes from their sire (the other half coming from their dam).

- Select animals using EBVs/GEBVs that are relevant to your farm, cow type and market



- Bear in mind that EBVs/GEBVs predict an animal's economic performance. They are no judge of factors such as soundness, locomotion, breed type etc and you must be satisfied with your potential purchase in these respects too.
- Consider the traits that will make you most money, but
- Don't forget to check traits you may be compromising in pursuit of your goals, such as Calving Ease etc
- EBVs/GEBVs change as time goes on. New calves and new performance records tell us more about animals' breeding potential. Limousin EBVs/GEBVs are updated three times per annum and all values will change as more information is added and the accuracy of the predictions increases.

## 7. EBV/GEBV & Pedigree Info Just a Click Away

EBV, GEBV and pedigree information on all Limousin cattle are just a few internet clicks away...

**Step 1:** Click the 'Taurusdata Online Herd Book' button on the Limousin Society homepage ([www.limousin.co.uk](http://www.limousin.co.uk)) or go direct to [www.taurusdata.co.uk](http://www.taurusdata.co.uk)

**Step 2:** In the 'All Breeds Quick Search' box type the name or ear number of the animal you are interested in or click on the 'Breeder Search' button to look at all animals belonging to or bred by a particular breeder.

The site will then tell you the animal's owner/breeder details, its breeding values, its pedigree and list its progeny with full links to all of their information.

## 8. Further Information

For further information, please contact Alison Glasgow, British Limousin Cattle Society on telephone 02476 696500, e-mail [alison@limousin.co.uk](mailto:alison@limousin.co.uk) or visit the BLCS web site [www.limousin.co.uk](http://www.limousin.co.uk), 'Performance Programmes'.

# semenstore.co.uk

quality semen on-line

Semenstore is a practical one-stop semen shop for vendors and buyers.  
The Semenstore features:

On-line semen purchasing

Automated service

Payment collection

Professional marketing

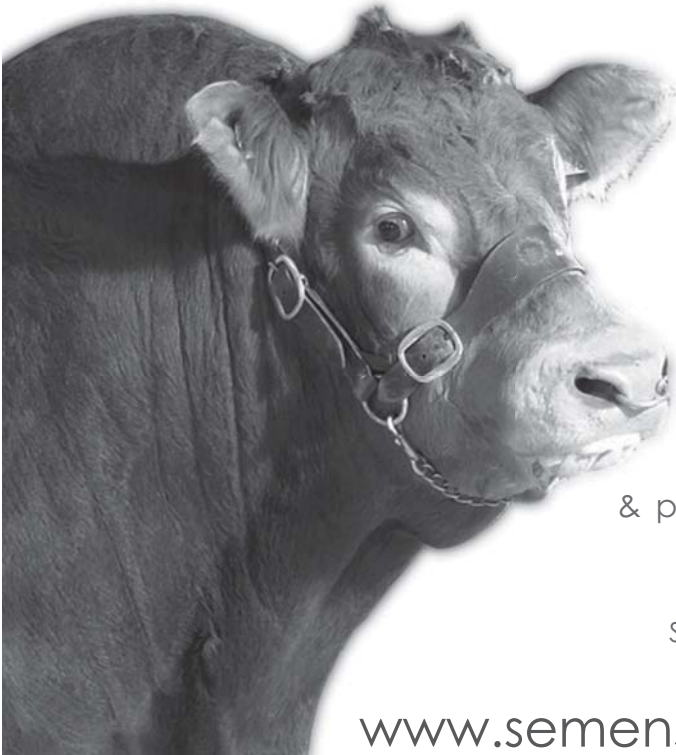
Semen for all markets

Export and domestic

Competitive pricing and costs

Unique offers & packages

One-stop Semen shop



[www.semenstore.co.uk](http://www.semenstore.co.uk)



# NI LIMOUSIN CATTLE CLUB

## – Membership Application Form –

Surname

---

Christian Name

---

Address

---

---

Postcode

---

Telephone No.

---

Herd Prefix

---

New Membership Fee £25 payable by Cheque or Cash. Future membership fees payable by Standing Order.

---

Please complete Standing Order below.

**TO THE MANAGER**

BANK LTD.

---

Branch Address

---

Your Details: Sort Code

Account Number

---

Please pay to the First Trust Bank, Cregagh Road, Belfast,

Sort Code 93.83.43      Account Number 21053092

For the credit of The N I Limousin Cattle Club

Reference: (Your Name/Prefix)

---

£25 payable annually on 1st January until further notice.

Signature:

---

Please post to: N I Limousin Cattle Club  
C/O Club Secretary, Shirley Fleming  
12 Merion Park, Ballyclare, Co Antrim BT39 9XD

---

## Vendors' Index & Herd Health Summary Dungannon 17th November 2017

---

The Vendors' Index includes a condensed version of the Herd Health information submitted at point of entry by the vendor. For further information, please see Explanatory Notes & copy of Herd Health Declaration form also included in the catalogue.

	<b>FEDNEYHOUSE</b>	<b>LOT 30</b>
Adams, T J	Fedney House, 50 Shot Lane, Banbridge, Co Down BT32 3TJ (TB1) (028 9753 2375)	
<b>Herd information: -</b>	Consigned from a 1 year TB testing interval holding Johne's Risk Level1 Member of a CHeCS controlled health scheme for BVD & Johnes	
	<b>CARNEW</b>	<b>LOT 1, 22</b>
Aiken, J & J	82 Corbally Road, Carnew, Dromara, Dromore, Co Down, BT25 2EX (TB1) (02897 532578)	
<b>Herd information: -</b>	Consigned from a 1 year TB testing interval holding Johne's Risk Level1 Member of a CHeCS controlled health scheme for Johnes Routinely vaccinating against BVD & Lepto	
	<b>SPAGE</b>	<b>LOT 20, 41, 42</b>
Campbell, P	50 Ballyvaddy Road, Carnlough, Ballymena, Co Antrim, BT44 OLG (TB1) (07732 954440)	
<b>Herd information: -</b>	Consigned from a 1 year TB testing interval holding Routinely vaccinating against BVD & Lepto	
	<b>MULLANSFORT</b>	<b>LOT 13</b>
Donnelly, Michael	16A Dunroe Road, Augher, Co Tyrone, BT77 0EB (TB1) (02885 548197)	
<b>Herd information: -</b>	Consigned from a 1 year TB testing interval holding	
	<b>DRUMADARRAGH</b>	<b>LOT 33, 34</b>
Drennan, N	Drumadarragh Cottage, 17 Orpins Mill Road, Ballyclare, Co Antrim, BT39 0SX (TB1) (028 9332 3558)	
<b>Herd information: -</b>	Consigned from a 1 year TB testing interval holding	
	<b>CULNAGECHAN</b>	<b>LOT 17, 29</b>
Hume, D	44 Maghereagh Road, Randalstown, Co Antrim, BT41 2EQ (TB1) (02894 479690)	
<b>Herd information: -</b>	Consigned from a 1 year TB testing interval holding Johne's Risk Level1 Member of a CHeCS controlled health scheme for Johnes Routinely vaccinating against BVD & Lepto	

---

Johnston Brothers	<b>KNOCKROE</b> Knockroe, Irvinestown, Co Fermanagh, BT94 1LQ (TB1) (02868 621023)	<b>LOT 9</b>
<b>Herd information: -</b>	Consigned from a 1 year TB testing interval holding Routinely vaccinating against BVD & IBR & Lepto	
Keys, Victor & Stephen	<b>ASHVIEW</b> 8 Aghnmoe Road, Dromore, Co Tyrone, BT78 3HR (TB1) (02882 898132)	<b>LOT 26</b>
<b>Herd information: -</b>	Consigned from a 1 year TB testing interval holding Johne's Risk Level1 Member of a CHeCS controlled health scheme for BVD & Johnes Routinely vaccinating against BVD & Lepto	
Loughran, M	<b>MILLGATE</b> 1 Mill Road, Dungate, Dunamore, Cookstown, Co Tyrone, BT80 9NU (TB1) (02886 751780)	<b>LOT 23, 24, 38, 39, 40</b>
<b>Herd information: -</b>	Consigned from a 1 year TB testing interval holding Johne's Risk Level2 Member of a CHeCS controlled health scheme for BVD & Johnes Routinely vaccinating against BVD & Lepto	
Marshall, Samuel J	<b>CRAIGNAGERAGH</b> 90 Glenhugh Road, Cragnageeragh, Ahoghill, Ballymena, BT42 1JD (TB1) (02825 871833)	<b>LOT 19</b>
<b>Herd information: -</b>	Consigned from a 1 year TB testing interval holding	
Martin, GN	<b>ASHMARA</b> 69 Banbridge Road, Dromara, Dromore, BT25 2NE (028 9753 3002)	<b>LOT 31</b>
<b>Herd information: -</b>	Johne's Risk Level3 Member of a CHeCS controlled health scheme for Johnes	
McAllister, W	<b>ARTNAGULLION</b> 92 Parkgate Road, Kells, Ballymena, Co Antrim, BT42 3PG (TB1) (02825 898084)	<b>LOT 32</b>
<b>Herd information: -</b>	Consigned from a 1 year TB testing interval holding Johne's Risk Level1 Member of a CHeCS controlled health scheme for BVD & Johnes Routinely vaccinating against BVD & Lepto	
McCague, G M	<b>BRIDGEVIEW</b> 19 Sheepbridge Road, Newry, Co Down, BT34 1SS (TB1) (02830 263958)	<b>LOT 27, 28</b>
<b>Herd information: -</b>	Consigned from a 1 year TB testing interval holding Routinely vaccinating against BVD & Lepto	

McConalogue, Frank	<b>CLORNEY</b> 16 Brockagh Road, Eglinton, Co Derry, BT47 3AT (TB1) (02871 812295)	<b>LOT 2, 5, 6, 36, 37</b>
<b>Herd information: -</b>	Consigned from a 1 year TB testing interval holding Routinely vaccinating against BVD & IBR & Lepto	
McConville, Martin	<b>GLENLIMO</b> 39 Glenhone Road, Rathfriland, Co Down, BT34 5DY (TB1) (07955 386572)	<b>LOT 17a</b>
<b>Herd information: -</b>	Consigned from a 1 year TB testing interval holding Member of a CHeCS controlled health scheme for BVD & Johnes	
McCusker, Dermot	<b>KILCLASS</b> 24 Kinallen Road, Ballyward, Castlewellan, Co Down, BT31 9QU (TB1) (02840 671029)	<b>LOT 35</b>
<b>Herd information: -</b>	Consigned from a 1 year TB testing interval holding Member of a CHeCS controlled health scheme for BVD & Johnes & Lepto Routinely vaccinating against BVD & Lepto	
McFarland, H & D	<b>RAHONEY</b> Rahoney, 200 Tonnagh Road, Trillick, Co Tyrone, BT78 3PG (TB1) (028 8289 8220)	<b>LOT 8, 12, 21</b>
<b>Herd information: -</b>	Consigned from a 1 year TB testing interval holding Johne's Risk Level1 Member of a CHeCS controlled health scheme for BVD & Johnes Routinely vaccinating against BVD & IBR & Lepto	
McKeefry, M	<b>ENIVER</b> 119 Carhill Road, Garvagh, Coleraine, Co Derry, BT51 5PQ (TB1)	<b>LOT 16</b>
<b>Herd information: -</b>	Consigned from a 1 year TB testing interval holding Johne's Risk Level1 Member of a CHeCS controlled health scheme for BVD & Johnes & Lepto Routinely vaccinating against BVD & Lepto	
McKeen, John Robert	<b>MOVENIS</b> Rosehill Farm, 12 Movenis Road, Garvagh, Coleraine, Co Londonderry, BT51 5JG (TB1) (028 295 58943)	<b>LOT 3, 4</b>
<b>Herd information: -</b>	Consigned from a 1 year TB testing interval holding Johne's Risk Level2 Member of a CHeCS controlled health scheme for Johnes Routinely vaccinating against BVD	

McKenna Bros	ARCHIES 35 Main St, Bellaghy, Co Derry, BT45 8HT (TB1) (02879 386329)	LOT 25
<b>Herd information: -</b>	Consigned from a 1 year TB testing interval holding Johne's Risk Level2 Member of a CHeCS controlled health scheme for BVD & IBR & Johnes & Lepto Routinely vaccinating against BVD & IBR & Lepto	
Murray, C H	ANNADALE 65 Skerriff Road, Cullyhanna, Newry, Co Down, BT35 0JN (TB1) (028 3086 1516)	LOT 7, 18
<b>Herd information: -</b>	Consigned from a 1 year TB testing interval holding Member of a CHeCS controlled health scheme for BVD & Johnes	
Savage, L	CASTLEROCK 31 Gortnessy Road, Drumahoe, Co Londonderry, BT47 3NL (TB1) (028 7772 3994)	LOT 15
<b>Herd information: -</b>	Consigned from a 1 year TB testing interval holding Johne's Risk Level2 Member of a CHeCS controlled health scheme for BVD & Johnes Routinely vaccinating against BVD & Lepto	
Savage, RAG	AGHADOLGAN 31 Gortnessy Road, Drumahoe, Co Londonderry, BT47 3NL (TB1) (02877 723994)	LOT 14
<b>Herd information: -</b>	Consigned from a 1 year TB testing interval holding Johne's Risk Level2 Member of a CHeCS controlled health scheme for BVD & Johnes Routinely vaccinating against BVD & Lepto	
Sherrard	GREENVALE 23 Green Road, Coleraine, Co Derry, BT51 4LX (TB1) (028 7035 7663)	LOT 10, 11
<b>Herd information: -</b>	Consigned from a 1 year TB testing interval holding Johne's Risk Level1 Routinely vaccinating against BVD & IBR & Lepto	

**Disclaimer:**

*The health information above is as supplied by, or on behalf of the breeder at time of entry. The responsibility for the accuracy of the information rests solely with the breeder and not with the British Limousin Cattle Society Ltd.*





## BRITISH LIMOUSIN CATTLE SOCIETY OFFICIAL SALE HERD HEALTH DECLARATION

HOLDING LETTERS: \_\_\_\_\_ HERD PREFIX: \_\_\_\_\_

NAME: \_\_\_\_\_ TEL: \_\_\_\_\_

ADDRESS: \_\_\_\_\_

SALE DATE: \_\_\_\_\_

BOVINE TB	
DATE HERD LAST TESTED CLEAR:	TESTING INTERVAL <input type="checkbox"/> 1 Year <input type="checkbox"/> 3 Years <input type="checkbox"/> 2 Years <input type="checkbox"/> 4 Years

HEALTH SCHEME	
ARE YOU A MEMBER OF A CHecs CONTROLLED HEALTH SCHEME <input type="checkbox"/> Yes <input type="checkbox"/> No IF YES, TICK WHICH ONE	
<input type="checkbox"/> SAC Premium Cattle Health Scheme <input type="checkbox"/> HI Health Herdcare <input type="checkbox"/> NML Herdwise <input type="checkbox"/> VLA Herdsure <input type="checkbox"/> NWL Advance Cattle Health Scheme <input type="checkbox"/> AFBI Cattle Health Scheme <input type="checkbox"/> Shetland Animal Health Scheme	
IF YES, TICK WHICH DISEASES APPLY <input type="checkbox"/> JOHNE'S <input type="checkbox"/> BVD <input type="checkbox"/> IBR <input type="checkbox"/> LEPTO	

ALL VENDORS, WHETHER IN CHecs SCHEMES OR PRIVATELY TESTING, SHOULD COMPLETE THE FOLLOWING:			
	Accredited free (CHecs members only)	Herd Testing	Vaccinating
BVD	<input type="checkbox"/> Yes <input type="checkbox"/> No If yes, since:	<input type="checkbox"/> Yes <input type="checkbox"/> No If yes, since:	<input type="checkbox"/> Yes    If yes name of <input type="checkbox"/> No      Vaccine: If yes, since:
IBR	<input type="checkbox"/> Yes <input type="checkbox"/> No If yes, since:	<input type="checkbox"/> Yes <input type="checkbox"/> No If yes, since:	<input type="checkbox"/> Yes    If yes name of <input type="checkbox"/> No      Vaccine: If yes, since:
LEPTO	<input type="checkbox"/> Yes <input type="checkbox"/> No If yes, since:	<input type="checkbox"/> Yes <input type="checkbox"/> No If yes, since:	<input type="checkbox"/> Yes    If yes name of <input type="checkbox"/> No      Vaccine: If yes, since:
JOHNE'S	Risk Level <input type="checkbox"/> Risk Level 1 <input type="checkbox"/> Risk Level 2 <input type="checkbox"/> Risk Level 3 <input type="checkbox"/> Risk Level 4 <input type="checkbox"/> Risk Level 5	<input type="checkbox"/> Yes <input type="checkbox"/> No If yes, since:	<input type="checkbox"/> Yes    If yes name of <input type="checkbox"/> No      Vaccine: If yes, since:

**Declaration:**

I certify that the above information is correct at date of entry. I allow the Breed Society/auctioneer to verify the details above with my CHecs Health Scheme Provider.

Signed: \_\_\_\_\_ Name: \_\_\_\_\_ Date: \_\_\_\_\_

The British Limousin Cattle Society, Concorde House, 24 Warwick New Road, Leamington Spa, CV32 5JG Tel 02476-696500

Disclaimer: The health information above is as supplied by, or on behalf of the breeder. The responsibility for the accuracy of the information rests solely with the breeder and not with the British Limousin Cattle Society Ltd.

---

# **HERD HEALTH AT BRITISH LIMOUSIN CATTLE SOCIETY (BLCS) COLLECTIVE SALES**

## **Introduction**

Following the cash-back Herd Health Initiative introduced by the Society in 2005, a second major health step saw the introduction of Herd Health Declarations at BLCS Collective Sales from 2007.

New herd health rules were introduced by the BLCS at nominated premier Collective Society Sales from May 2011 and these are now in place at all premier BLCS Collective Sales (Stirling February & October; Carlisle February, May, October & December; Brecon February, May & November).

The principal aim is to standardise herd health declarations and information presented in order to provide both members and customers alike with clear, accurate herd health information at the point of sale and within the given sale catalogue. As such it is attractive and informative for customers and aims to further raise the level of buyer confidence.

## **BLCS Herd Health Rules have two principal elements:**

Part 1. From 1st May 2011, herds selling at the premier Collective Society Sales have to be members of, and adhering to, the terms of a CHeCS approved Herd Health Scheme. At a minimum, this must include a whole herd test for Johne's disease.

Part 2. From 1st May 2011, all animals male and female, including calves at foot, presented at the premier Collective Society Sales be EITHER from a BVD Accredited Herd within a CHeCS approved Herd Health Scheme OR to have been BVD tested virus free. All animals forward will be required to be BVD vaccinated prior to sale with an approved vaccine. Pregnant animals must have had testing and vaccination completed prior to service. Vaccination of calves at foot to be in accordance with CHeCS guidelines and recommendations.

## **Herd Health Declaration**

The sale entry form is accompanied by a Herd Health Declaration form asking vendors questions regarding for example: TB status; membership of CHeCS ([www.cheecs.co.uk](http://www.cheecs.co.uk)) health schemes (Advance Cattle Health Scheme, AFBI Cattle Health Scheme, Herdsure Cattle Health Improvement Service, HiHealth Herdcare, NML Herdwise, Premium Cattle Health Scheme, Shetland Animal Health Scheme) and Johne's, BVD, IBR and Lepto status. This form is shown here.

A condensed version of the Herd Health Declaration information appears in the Vendors' Index at the front of the respective sale catalogue.

---

### **Is the Herd Health Declaration compulsory?**

For premier collective sales (Carlisle February, May, October & December; Stirling February & October; Brecon February, May & November) the Herd Health Declaration is compulsory. For reasons of clarity and to provide purchasers with the most accurate information available, vendors are required to complete this at time of entry.

Although not compulsory at other collective sales (Ballymena, Dungannon, Thainstone & Stirling in May), the Society recommends that vendors complete the Herd Health Declaration. This information then appears in the Vendors' Index within the catalogue. Where a member has chosen not to complete the Herd Health Declaration, it will simply say 'No Herd Health Declaration'.

### **What Other Health Information may be displayed?**

Vendors are encouraged to apply to their respective CHeCS health scheme for individual animal health cards for display on pens. For an individual animal's test results, or vaccination histories, regarding BVD, IBR, Lepto or Johne's, these are permitted above the sale pens only upon presentation of a signed veterinary declaration to verify that the animal concerned has had a clear test.

Again, for reasons of practicality, no health information notes are to be put in the catalogue footnotes by vendors. Similarly, the Society has requested that no declarations on health information be given by the auctioneer during the sale. Again, the sole purpose of this is to avoid confusion and to try and ensure that the information provided is done accurately, fairly and in a standardised format in the catalogue. This point has been agreed with the auctioneers.

### **Introduction of Johne's Risk Levels from 1st January 2013**

From 1st January 2013, CHeCS, the self-regulatory body for cattle health schemes in the UK and Ireland, agreed a change to Johne's testing with herds classified on a Risk Level basis of 1 to 5 (with 1 being low risk and 5 high risk).

The Risk Levels are as follows:

Risk Level 1	herds that were previously Accredited
Risk Level 2	herds that have had 1 or more clear qualifying tests
Risk Level 3	herds that have 3% or fewer reactors every year*
Risk Level 4	herds that have more than 3% reactors every year**
Risk Level 5	herds not in a CHeCS Johne's disease programme and herds with no health plan in place

\* Note, for herds with fewer than 33 animals in the target age range, rather than 3%, Risk Level 3 will be one animal testing positive for Johne's

\*\* Note, for herds with fewer than 33 animals in the target age range, rather than 3%, Risk Level 4 will be more than one animal testing positive for Johne's

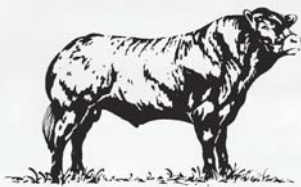
---

**What if a vendor is selling an animal/s that he did not breed?**

Vendors are still requested to fill in the Herd Health Sale Declaration accordingly. Prospective customers are advised to speak to vendors directly to acquire accurate health information on animals offered but not bred by the seller.

**Feedback & more information**

The Society welcomes members' and customers' feedback on the Herd Health Declarations and health policy at sales. If you have further questions, please speak to the Society representatives, Iain Kerr & Richard Saunders, or the Auctioneers.



LIMOUSIN

# Post-Purchase Management of Young Bulls

Prepared by Ian Pritchard, Beef Specialist, SAC

## Purchase

Buy well in advance to allow time to settle – make it a planned rather than last minute decision. Recommendation is to buy at autumn sale for early spring use or February sale for later spring use or May sale for autumn use

On getting bull home, isolate bull for a month. Check his working capability and health and vaccinate/treat as necessary. A semen test should be carried out. Try and minimise stress

Remember a short working life increases cost

Insurance companies may refuse claims in cases of unsatisfactory management of a bull

## Feeding

Young bulls are in forward condition at sale and should be allowed to lose condition gradually – they are still maturing. Dietary changes should not be sudden – try and find out the diet prior to purchase so that a stable rumen environment can be maintained. Forage alone will not be sufficient to maintain a young bull which may be anything up to 1,000kg in weight. They should be fed to gain at 0.8kg/day

Feed concentrates in at least 2 feeds for one month after purchase. Prior to purchase, a bull will have been fed on a high concentrate level fed frequently per day

A bull will have seen little grass since the suckling period. Ideally do not turn to grass without supplementary feed for at least 4-6 weeks after purchase

*“Do not keep him on a slippery floor surface. Look after his feet by trying to keep him on a partial hard surface”*

## **Housing**

Bulls will have been in individual pens with a lot of human contact (walking/grooming) plus several feeds per day

Do not ignore him post-purchase by keeping him in a confined space or tied in a dark shed. Provide him with human contact and allow him to see his surroundings even though he is in isolation

Do not keep him on a slippery floor surface and certainly do not allow him to serve cows on this surface. Look after his feet by trying to keep him on a partial hard surface

Make sure pen divisions are high and strong – many accidents happen with bulls trying to jump out of pens shortly after arrival

## **Training**

Young bulls are sexually inexperienced

Using prior to sale is resisted as they become harder to handle

Try and pen bulls where they can see cows/ other bulls working

Take a mature cow to him and allow him to serve her several times

## **Working**

Avoid overwork – young bulls are enthusiastic but have low semen reserves

Target 20 cows in the first season

Try and get him to take a bit of supplementary feed to maintain body condition score around 3

Remove from cows if it is apparent condition is being lost – it will only lead to barren cows

Check he is serving correctly (20-40% of bulls could be infertile or sub-fertile) so keep a watchful eye and check herd 3 weeks later. If in doubt, pull him out. It is essential to PD cows after bull removed from herd

*“Provide him with human contact and allow him to see his surroundings”*

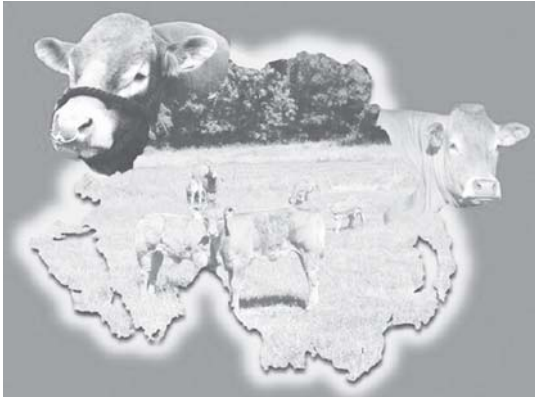
## **Annually (for all bulls)**

Being fertile one season is no guarantee. Prior to the next season do bull “MOT” and fertility check in conjunction with vet

Do not trim feet just before use – plan for 6-8 weeks before. Feet and legs do a lot of work in mating season

Feed 2-3kg concentrates per day prior to mating season to build condition ready for an active season

Adapted from “Bull Selection Made Simple – A Guide for the Commercial Buyer” published 2011 by SAC & QMS



**LIMOUSINS IN DUNGANNON**  
**PURCHASER'S DETAILS**

Name .....

Full Address .....

.....

.....

Lot No. ....

Name of Transporter .....

Registration of Vehicle .....



---

## CONDITIONS OF SHOW OR SALE

1. Each item must be bona fide the property of the exhibitor.
2. The highest bidder to be the buyer, and if any dispute arises between the bidders, the decision of the Auctioneer shall be Final, or at his discretion the lot in dispute shall immediately be put up again and re-sold. The Auctioneer reserves the right of refusing the bid of any person and regulates the bidding, and no bidding is to be retracted.
3. The purchasers to give their names and places of abode in writing and pay the full purchase money for each lot at the fall of the hammer ( if required ); in default of which the lot or lots so purchased may immediately be put up again and re-sold.
4. No lot or lots shall be removed from the premises before the sale, or till paid for, but each and every lot shall, immediately at the fall of the hammer, be considered as delivered, and be and remain in every respect at the absolute risk of the respective purchasers thereof, and shall be removed from the place of sale at the purchaser's expense.
5. If any purchaser shall fail to comply with the above conditions, or any part of them, the Auctioneers shall be at liberty either to recover in full the amount of the lot or lots bought by such purchaser, without reference to any delivery or acceptance of the lots or lots other than first delivery by the fall of the hammer, or to re-sell any lot or lots bought by the purchasers, either by public or private sale; and the full amount of the purchase money at the present sale, or the deficiency ( if any) arising from such second sale, shall be made good by the defaulter at the present sale, and be recoverable as and for liquidated damages.
6. No money will be paid to the proprietor for any lot sold, unless the account be cleared by the purchaser and the Auctioneers will not be answerable for any deficiency that may arise on the re-sale of any uncleared property.
7. Animals are present on the sole responsibility of owners, whose duty it is to keep each exhibit under proper control at all times, whether in pen or in show or sale rings, or in transit within the centre. Neither the Auctioneers, the organisers nor the Sponsors, nor any of their officials or employees will be liable for damage or injury caused by any animal's behaviour, including overnight.
8. Purchasers are to understand that, although every reasonable precaution will be taken to ensure the safety and welfare of the animals exhibited, the Auctioneers will not be responsible for loss, or accidents of any kind, that may occur. Nor will the Auctioneers or vendors be accountable for any accident that may occur to any person attending the sale, whether as a visitor. or in any other capacity.
9. The pedigree, history and description of each animal is guaranteed by the owner, and no liability whatsoever is undertaken by the Auctioneers for the statements in the catalogue or announcements made at time of sale. The vendor who supplies such statements is alone responsible.
10. No undertaking of the Auctioneers or vendors or their servants to take charge of the lots or animals for sale, or to forward them to their destination. shall be held to impose any legal obligation or vitiate any of the foregoing conditions.
11. Any Medical Treatment to any animals must be advised by the Auctioneer for announcement at time of sale. The presence of any chemical or pharmaceutical substance in or on an animal or in its milk during the withdrawal period may render its sale void.
12. Should any question arise not provided for in the forgoing conditions, the decision of the Auctioneers shall be final, from which there shall be no appeal.
13. Neither the Auctioneers nor the sponsors incur liability for the return of Auction Fees where a claim IS made for return of purchase price of any lot sold at the sale.
14. The sale will be conducted in Guineas. Purchasers will pay VAT on Fees.
15. After Sale release of livestock or goods is by Pass Out issued by the Sale Office. This also includes unsold lots.
16. Each and every lot must be presented for sale in the auction ring in catalogue or numerical order. No Sale may be contemplated before such presentation. Lots not sold in the auction or present for demonstration purposes and subsequently sold privately on the premises must be recorded through the auctioneer's office and are subject to commission.
17. No electrical device may be connected to any socket in the show or sale premises unless it is fitted with an approved circuit breaking control. All equipment must be in up to date state of safety. Note. Sockets on sale rostrum are not suitable for blow driers.
18. Neither the Auctioneers, the Organisers, nor the Sponsors shall incur any liability for loss or inconvenience arising from postponement or cancellation of the event.

### NOTE.

No animal is considered to be delivered to the Show and Sale until placed in the pen or place of tying allotted. Access doors will permit vehicles and trailers to enter the building for loading or unloading. Delivery to purchaser will also be effected when the purchaser removes the animal from the pen, or otherwise takes charges of the animal. Under no circumstances may any animal be taken out of the building for loading. The trailer or lorry must be backed inside the doorway and the screen doors closed to the vehicle. Please remember to collect your Movement Permit before leaving. And please remember that a new purchase should be introduced to company when taken home - and not placed in solitary confinement on arrival in strange surroundings after transport!

**N.B.-** The Auctioneers reserve the right to refuse cheques as payment. All payments to be in sterling by Bank Draft or cash, or at current exchange rate. New customers should contact the Auctioneers in advance of sale to make arrangements for use of cheques.

(2005)

# Closamectin<sup>®</sup>

Pour on

**Kills Fluke, Worms, Lice and Mange**

Only 28 Day  
Meat Withhold



## Your Trusted Treatment This Autumn

The ONLY Fluke and Worm Pour On which

- ✓ Kills late immature and adult fluke with a 28 day meat withhold
- ✓ Kills triclobandazole resistant fluke



[www.closamectin.com](http://www.closamectin.com)

Please read the product data sheet and seek advice before use. The dosing programme should be established with your veterinary practitioner, animal health adviser or licenced merchant.

Manufactured in NI by: Norbrook Laboratories Ltd, Station Works, Newry, Co. Down, BT35 6JP.

Distributed in ROI by: Norbrook Laboratories (Ireland) Ltd, Rossmore Industrial Estate, Monaghan, County Monaghan.

Distributed in GB by: Norbrook Laboratories (GB) Ltd, 1 Saxton Way East, Oakley Hay Industrial Estate, Corby, NN18 9EX.

Legal Category: R01: LUK: YES Closamectin Pour on Solution for Cattle contains 200mg/ml Closantel and 5mg/ml Ivermectin. 2958-LA(C)-v1-ROI/UK-09/10/14

**Norbrook<sup>®</sup>**

[www.norbrook.com](http://www.norbrook.com)

# CLASS 1 SENIOR BULLS

**Lot** Messrs J & J Aiken  
**01** **CARNEW MARKSMAN**

Born 13/01/2016      AEN16-1291  
Got by AI Natural Calf

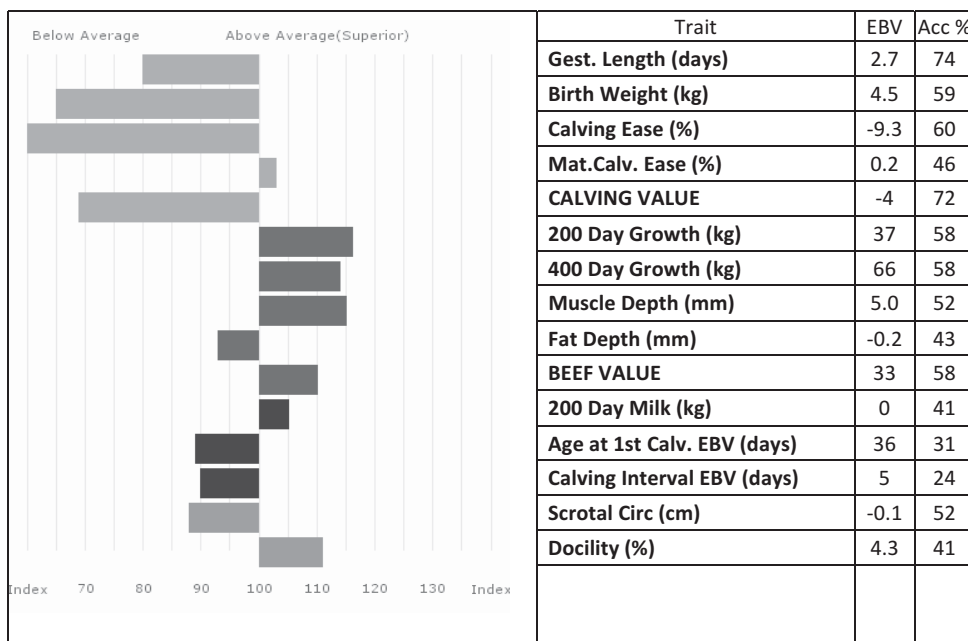
UK 9273139/0129-1

**Sire** **LYNDERG HERO LDG12-009**

gs. LYNDERG EISENHOWER LDG09-019  
gd. LYNDERG DIANA LDG08-019

**Dam** **CARNEW FAITH AEN10-003**

gs. HALTCLIFFE VERMOUNT RP04-042  
gd. CARNEW BILLIEJO AEN06-002



Adjusted Weights (kg)      100      200      300      400      500      Scanned  
195      0      510      0      0      NO

---

**Lot 02**     **Frank McConalogue**  
**CLORNEY MONZA**  
Born 14/01/2016     QDP16-1446     UK 9541548/0144-6  
Got by AI Natural Calf

**Sire**     **BAHUT 87-53-841-575**     gs. URUGUAY 12-04-073-860  
gd. NORVEGIENN 87-97-009-574

**Dam**     **CLORNEY HONEY QDP12-003**     gs. KEERAN FANCYBOY HNT10-001  
gd. CROOBVIEW DANIELLA JGR08-004

---

**Lot 03**     **Mr J R McKeen**  
**MOVENIS MASTER**  
Born 27/01/2016     QHB16-173     UK 9492565/0017-3  
Got by AI Embryo Calf

**Sire**     **AMPERTAINE ELGIN MGD09-039**     gs. GLENROCK VENTURA IE04-432  
gd. AMPERTAINE CARLA MGD07-036

**Dam**     **HARTLAW BLUEBELL MUE06-233**     gs. NENUPHAR 87-97-011-143  
gd. GLENROCK JUNIPER IE94-010

---

**Lot 04**     **Mr J R McKeen**  
**MOVENIS MAJOR**  
Born 12/02/2016     QHB16-217     UK 9492565/0021-7  
Got by AI Embryo Calf

**Sire**     **AMPERTAINE ELGIN MGD09-039**     gs. GLENROCK VENTURA IE04-432  
gd. AMPERTAINE CARLA MGD07-036

**Dam**     **HARTLAW BLUEBERRY MUE06-235**     gs. NENUPHAR 87-97-011-143  
gd. GLENROCK JUNIPER IE94-010

---

---

**Lot 05 Frank McConalogue**  
**CLORNEY MAC**  
Born 10/03/2016 QDP16-1472 UK 9541548/0147-2  
Got by AI Natural Calf

**Sire BAHUT 87-53-841-575** gs. URUGUAY 12-04-073-860  
gd. NORVEGIENN 87-97-009-574

**Dam CLORNEY HICON QDP12-016** gs. HALTCLIFFE UNDERWRITER RP03-003  
gd. OXTOWN CINDY FAU07-003

---

**Lot 06 Frank McConalogue**  
**CLORNEY MICKY**  
Born 12/03/2016 QDP16-1505 UK 9541548/0150-5  
Got by AI Natural Calf

**Sire GLENROCK VAGRANT IE04-447** gs. ROMEO 19-30-817-708  
gd. GLENROCK JUNIPER IE94-010

**Dam CLORNEY HANNA QDP12-001** gs. AMPERTAINÉ BRIGADEER MGD06-012  
gd. BELLVIEW BANGLE WCT06-005

## CLASS 2 SENIOR BULLS

**Lot** Mr C H Murray

**07** ANNADALE MARSHMALLOW

Born 19/03/2016

MUX16-1751

UK 9244515/175-1

Got by AI Natural Calf

**Sire** AMPERTAINE FOREMAN MGD10-039

gs. WILODGE CERBERUS WEY07-010

gd. AMPERTAINE BATHSHEBA MGD06-032

**Dam** ANNADALE HONEY MUX12-010

gs. HALTCLIFFE VERMOUNT RP04-042

gd. BERNISH SERENA MJI01-022

Trait	EBV	Acc %
Gest. Length (days)	1.2	74
Birth Weight (kg)	3.7	63
Calving Ease (%)	-5.0	63
Mat. Calv. Ease (%)	0.8	54
CALVING VALUE	-1	73
200 Day Growth (kg)	43	69
400 Day Growth (kg)	79	68
Muscle Depth (mm)	6.1	60
Fat Depth (mm)	-0.1	55
BEEF VALUE	40	68
200 Day Milk (kg)	2	55
Age at 1st Calv. EBV (days)	29	46
Calving Interval EBV (days)	4	29
Scrotal Circ (cm)	0.4	61
Docity (%)	4.8	54

Adjusted Weights (kg)      100      200      300      400  
 208      380      517      0

500      Scanned  
 0      NO

Notes      Excellent easy calving pedigree.

**Lot Messrs H & D McFarland**

**08 RAHONEY MARK**

Born 01/04/2016

MDS16-2487

UK 9634843/1248-7

Got by AI Embryo Calf

**Sire HALTCLIFFE VERMOUNT RP04-042**

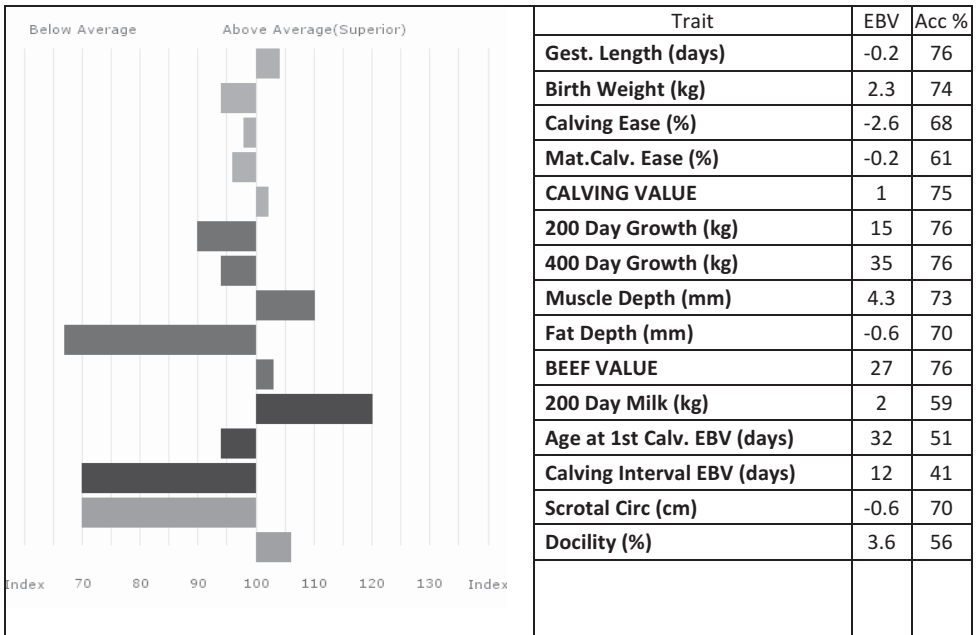
gs. PENYRHEOL SAM PCU01-216

gd. RENONCULE 19-30-708-827

**Dam RAHONEY BETHANY MDS06-026**

gs. HOMEBYRES VISITOR LAP04-041

gd. RAHONEY REBEKAH MDS00-012



Adjusted Weights (kg)      100      200      300      400      500      Scanned  
 187      334      454      584      0      YES

Notes      Full brother Rahoney Galilea sold at 6 months old for £4000 Full brother Rahoney Hosea & half brother Rahoney Gideon kept as stock bulls Half brother Rahoney Fantastic overall champion Dungannon Feb 2012 £4800



**Lot 09 Johnston Brothers  
KNOCKROE MADMAX**

Born 02/04/2016 JIB16-1251  
Got by AI Natural Calf

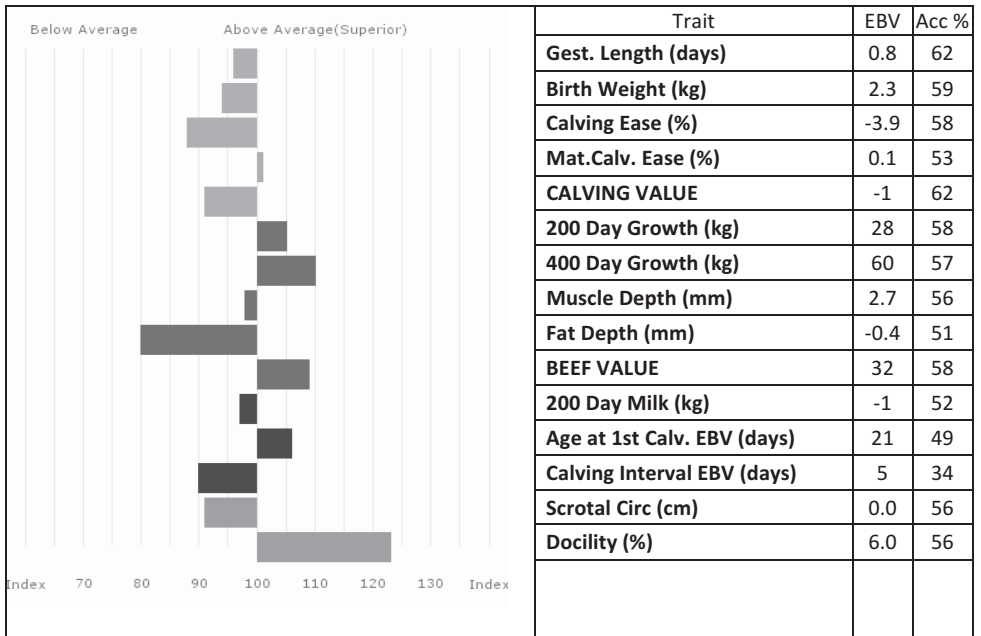
**UK 9471961/12521**

**Sire LOOSEBEARE FANTASTIC QA10-074**

gs. WILODGE VANTASTIC WEY04-037  
gd. LOOSEBEARE SACHA QA01-014

**Dam BEACHMOUNT ALI KCG05-001**

gs. NENUPHAR 87-97-011-143  
gd. WIGGONBY NAUGHTY BAX97-060



Adjusted 100 200 300 400 500 Scanned  
Weights (kg) 202 355 523 666 0 NO

Notes Outstanding son of Fantastic out of a Super Nenuphar cow

**Lot** Messrs Sherrard  
**10** GREENVALE MARK

Born 04/04/2016 SKX16-463  
 Got by AI Natural Calf

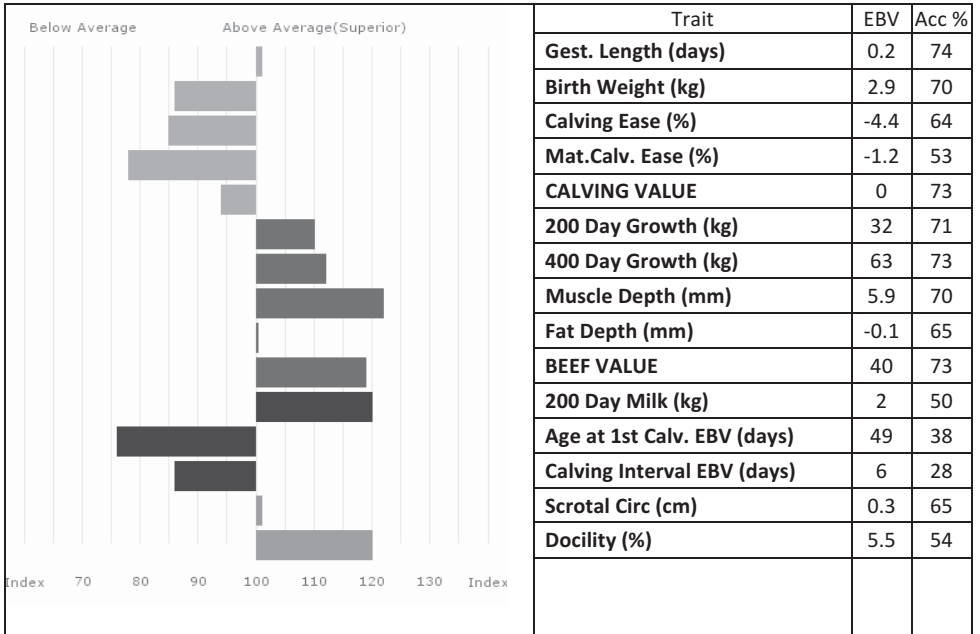
UK 9491784/2546-3

**Sire** AMPERTAINÉ GIGOLO MGD11-051

gs. AMPERTAINÉ COMMANDER MGD07-046  
 gd. AMPERTAINÉ CRYSTAL MGD07-016

**Dam** GREENVALE FELICITY SKX10-001

gs. FIELDSON ALFY FCE05-384  
 gd. GREENVALE AMY SKX05-011



Adjusted Weights (kg) 100 200 300 400 500 Scanned  
 0 0 507 694 859 YES

**Lot Messrs Sherrard**  
**11 GREENVALE MUSCULAR**

Born 06/04/2016 SKX16-474  
 Got by AI Natural Calf

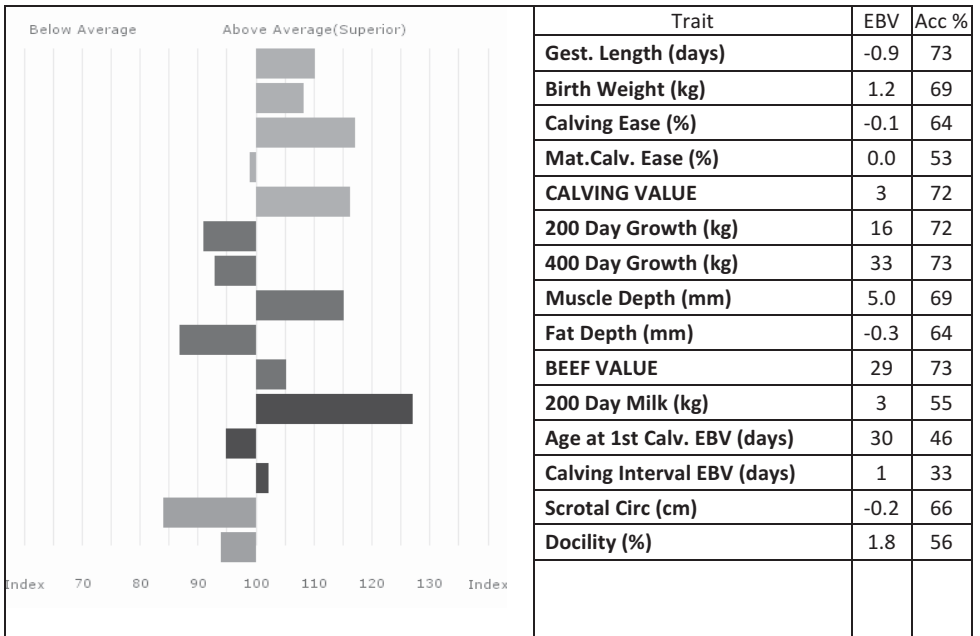
UK 9491784/2547-4

**Sire AMPERTAINÉ FOREMAN MGD10-039**

gs. WILODGE CERBERUS WEY07-010  
 gd. AMPERTAINÉ BATHSHEBA MGD06-032

**Dam GREENVALE GEMMA SKX11-016**

gs. RONICK HAWK DY92-026  
 gd. LARKHILL DEBRA MMU08-014



Adjusted Weights (kg) 100 200 300 400 500 Scanned  
 0 0 447 571 703 YES

## CLASS 3 INTERMEDIATE BULLS

**Lot** Messrs H & D McFarland

**12** RAHONEY MALACHI

Born 12/04/2016

MDS16-2513

UK 9634843/1251-3

Got by AI Embryo Calf

**Sire** AMPERTAINÉ GIGOLO MGD11-051

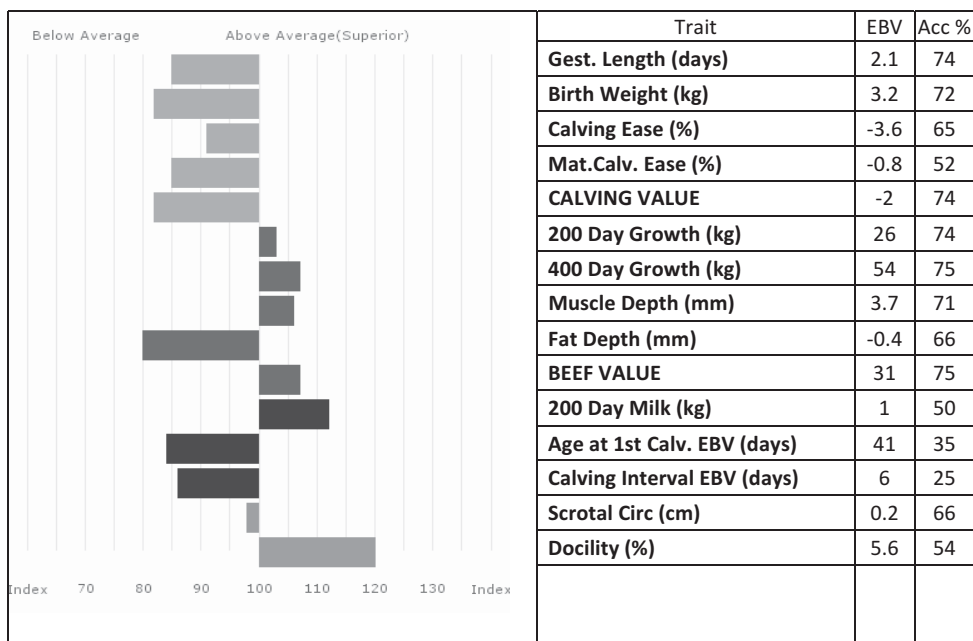
gs. AMPERTAINÉ COMMANDER MGD07-046

gd. AMPERTAINÉ CRYSTAL MGD07-016

**Dam** RAHONEY INDIANA MDS13-1555

gs. DERRIAGHY ENFIELD GGU09-775

gd. RAHONEY FAVOURITE MDS10-022



Adjusted Weights (kg)      100      200      300      400      500      Scanned  
 190      345      468      589      0      YES

---

**Lot 13 Michael Donnelly**  
**MULLANSFORT MURPHY**  
Born 14/04/2016 DOY16-4301 UK 9580665/1430-1  
Got by AI Natural Calf

**Sire AMPERTAINE ELGIN MGD09-039** gs. GLENROCK VENTURA IE04-432  
gd. AMPERTAINE CARLA MGD07-036

**Dam BERNISH JEMU MJI14-649** gs. HALTCLIFFE DJ RP08-755  
gd. BERNISH EMU MJI09-011

---

**Lot 14 Mr RAG Savage**  
**AGHADOLGAN MALCOLM**  
Born 16/04/2016 SLC16-0552 UK 9541606/0055-2  
Got by AI Natural Calf

**Sire AMPERTAINE FOREMAN MGD10-039** gs. WILODGE CERBERUS WEY07-010  
gd. AMPERTAINE BATHSHEBA MGD06-032

**Dam AGHADOLGAN GERENA SLC11-019** gs. SYMPA 48-01-006-969  
gd. AGHADOLGAN URENA SLC03-047

---

**Lot 15 Miss L Savage**  
**CASTLEROCK MINSTRAL**  
Born 16/04/2016 SOS16-0537 UK 9541606/0053-7  
Got by AI Natural Calf

**Sire AMPERTAINE FOREMAN MGD10-039** gs. WILODGE CERBERUS WEY07-010  
gd. AMPERTAINE BATHSHEBA MGD06-032

**Dam CASTLEROCK JEMIMA SOS14-3986** gs. WILODGE FASTRAC WEY10-002  
gd. NEWSHOT EASYPEASY HTN09-001

**Lot** Mr M McKeefry  
**16** ENIVER MAGIC

Born 19/04/2016  
 Got by AI Natural Calf

MRX16-9644

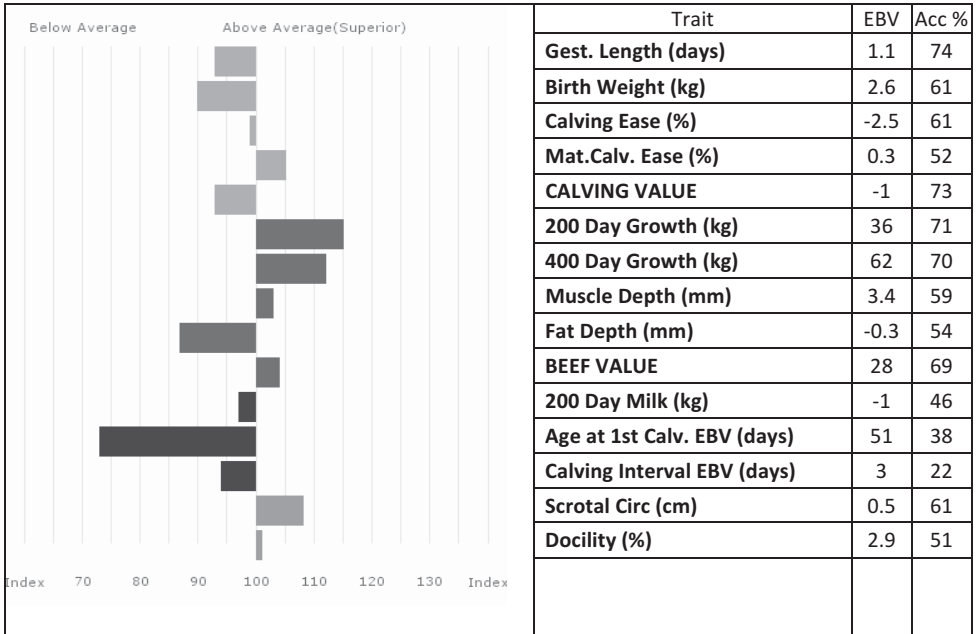
UK 9491842/0964-4

**Sire** AMPERTAINÉ ELGIN MGD09-039

gs. GLENROCK VENTURA IE04-432  
 gd. AMPERTAINÉ CARLA MGD07-036

**Dam** ENIVER IPSWICH MRX13-004

gs. AMPERTAINÉ BERMUDA MGD06-024  
 gd. ENIVER DORA MRX08-011



Adjusted Weights (kg)      100      200      300      400      500      Scanned  
 195      347      503      643      792      NO

**Lot** Mr D Hume  
**17** CULNAGECHAN MOHAWK

Born 22/04/2016 HQG16-8066  
 Got by AI Natural Calf

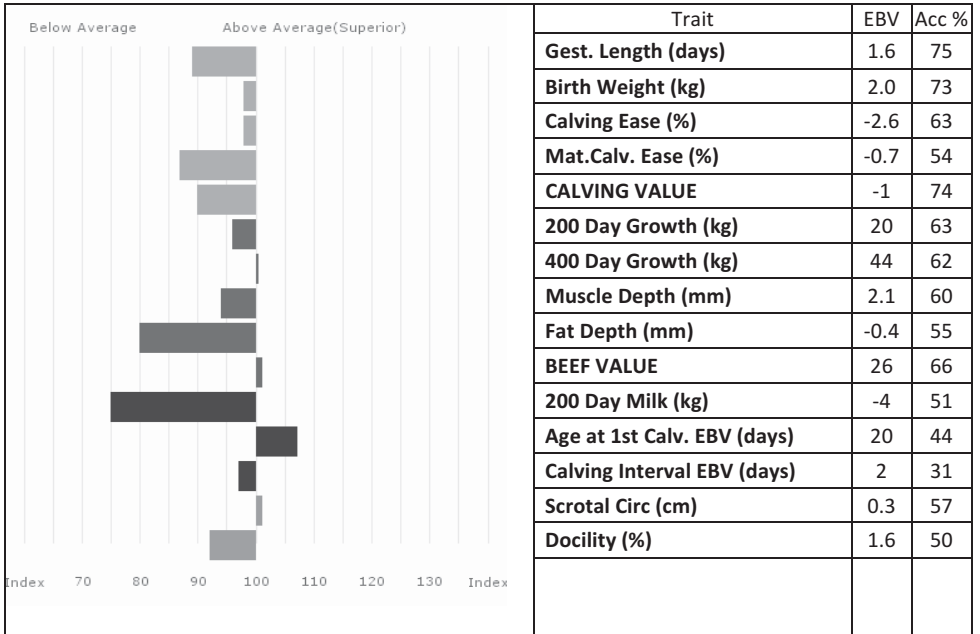
UK 9060789/1806-6

**Sire** CARMORN COPILOT MCN07-038

gs. WILODGE VANTASTIC WEY04-037  
 gd. CARMORN PENNY MCN99-025

**Dam** BALLYDONAGHY ROSEATETERN KCB00-001

gs. TANAT MOSTYN EAH96-018  
 gd. ROBBSTOWN IONA ROB93-006



Adjusted Weights (kg)      100      200      300      400      500      Scanned  
 200      368      550      0      0      NO

---

## CLASS 4 INTERMEDIATE BULLS

**Lot**     **Martin McConville**

**17A**     **GLENLIMO MIKE**

Born 03/05/2016

QIV16-0012

UK 9422518/0001-2

Natural Calf

**Sire**     **DONNELLY HERNANDO IE271897790256**

gs. WILODGE VANTASTIC WEY04-037

gd. NEWTOWN TRIXIE IE231230920103

**Dam**     **BRIDGEVIEW ISLA MQV13-011**

gs. ROUNDFIELD EMAZON IE131679940012

gd. CASTLE C266 IE341208860266



**Lot 18 Mr C H Murray  
ANNADALE MATADOR**

Born 04/05/2016 MUX16-1784  
Got by AI Natural Calf

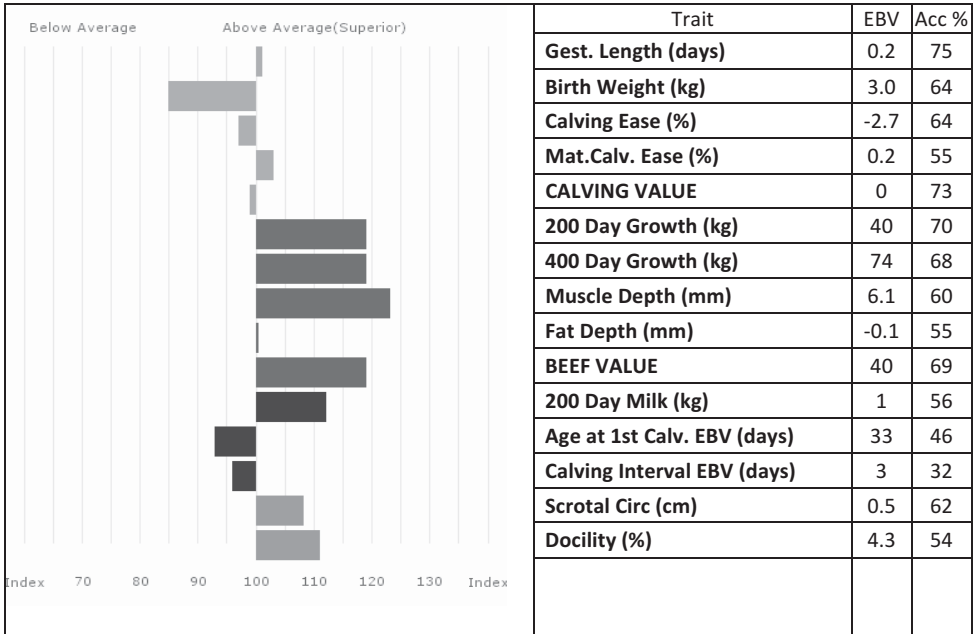
UK 9244515/178-4

**Sire AMPERTAINÉ FOREMAN MGD10-039**

gs. WILODGE CERBERUS WEY07-010  
gd. AMPERTAINÉ BATHSHEBA MGD06-032

**Dam ANNADALE GLAMOURISE MUX11-008**

gs. BROADMEADOWS CANNON CAVC-031  
gd. BERNISH SERENA MJI01-022



Adjusted Weights (kg) 100 209 200 361 300 532 400 0 500 0 Scanned NO

Notes Excellent easy calving pedigree.

---

**Lot  
19**

**Samuel J Marshall  
CRAIGNAGERAGH MARIO**

Born 11/05/2016  
Got by AI Natural Calf

QIT16-001

UK 9122260/0256-5

**Sire**

**GERRYGULLINANE GLEN IE272503020029**

gs. MACHERMORE AUGUSTUS MUK05-006  
gd. DERRYGULLINANE DAISY IE271061710211

**Dam**

**RAHONEY IDA MDS13-1544**

gs. MOLOSKEY GER IE131477870659  
gd. RAHONEY GLENDA MDS11-013

---

**Lot** Mr P Campbell  
**20** SPAGE MURPHY

Born 13/05/2016  
 Got by AI Natural Calf

CFS16-4651

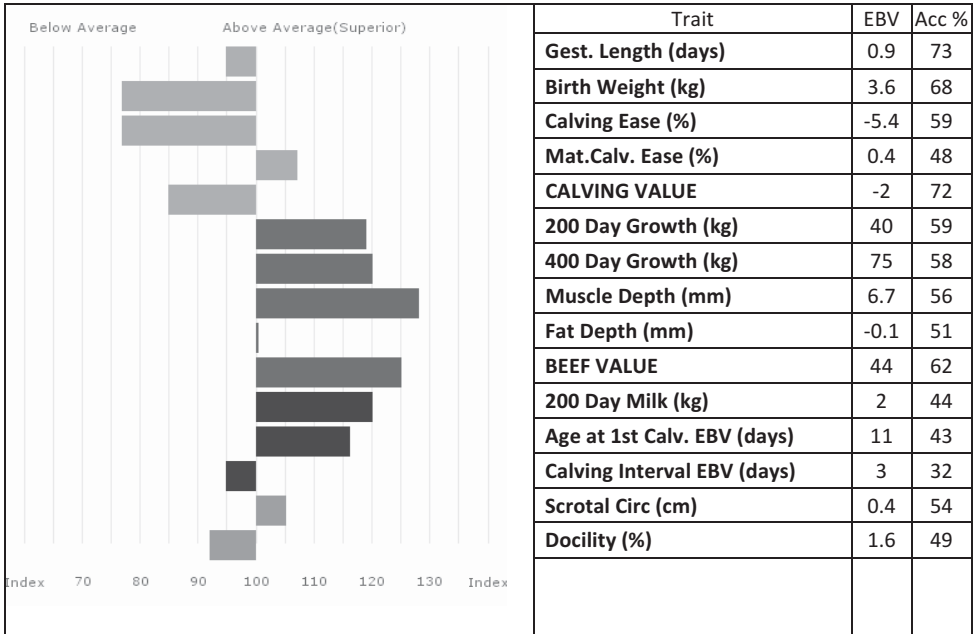
UK 9102633/0465-1

**Sire** HALTCLIFFE DANCER RP08-753

gs. SYMPA 48-01-006-969  
 gd. CLOUGHHEAD ROMANY HCX00-051

**Dam** SPAGE HOLLY CFS12-002

gs. RYEDALE PARAGON DAC99-266  
 gd. SPAGE CIERA CFS07-006



Adjusted Weights (kg)      100      200      300      400      500      Scanned  
 175      312      478      647      813      NO

**Lot Messrs H & D McFarland**  
**21 RAHONEY MOSES**

Born 18/05/2016  
 Got by AI Natural Calf

MDS16-2583

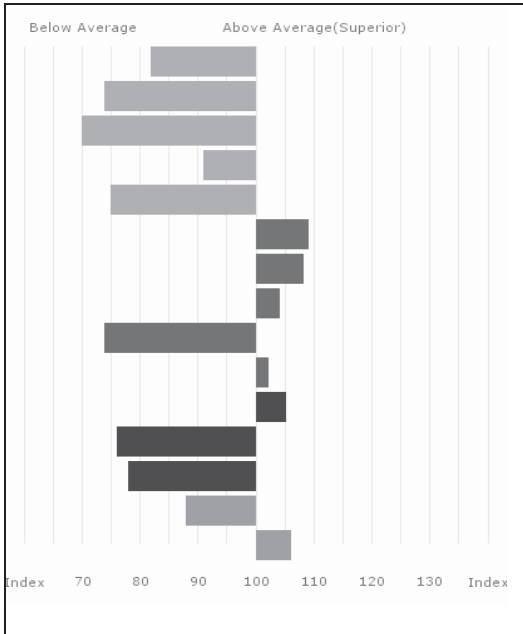
UK 9634843/1258-3

**Sire AMPERTAINÉ ELGIN MGD09-039**

gs. GLENROCK VENTURA IE04-432  
 gd. AMPERTAINÉ CARLA MGD07-036

**Dam RAHONEY GLADYS MDS11-005**

gs. HALTCLIFFE VERMOUNT RP04-042  
 gd. RAHONEY EVE MDS09-001



Trait	EBV	Acc %
Gest. Length (days)	2.4	74
Birth Weight (kg)	3.8	72
Calving Ease (%)	-6.3	65
Mat. Calv. Ease (%)	-0.5	57
CALVING VALUE	-3	74
200 Day Growth (kg)	31	74
400 Day Growth (kg)	56	75
Muscle Depth (mm)	3.5	71
Fat Depth (mm)	-0.5	67
BEEF VALUE	27	75
200 Day Milk (kg)	0	51
Age at 1st Calv. EBV (days)	48	42
Calving Interval EBV (days)	9	26
Scrotal Circ (cm)	-0.1	67
Docility (%)	3.6	55

Adjusted	100	200	300	400	500	Scanned
Weights (kg)	202	341	495	616	0	YES

**Lot** Messrs J & J Aiken

**22** **CARNEW MARIO**

Born 26/05/2016

AEN16-1361

UK 9273139/0136-1

Got by AI Natural Calf

**Sire** **LODGE HAMLET CBM12-346**

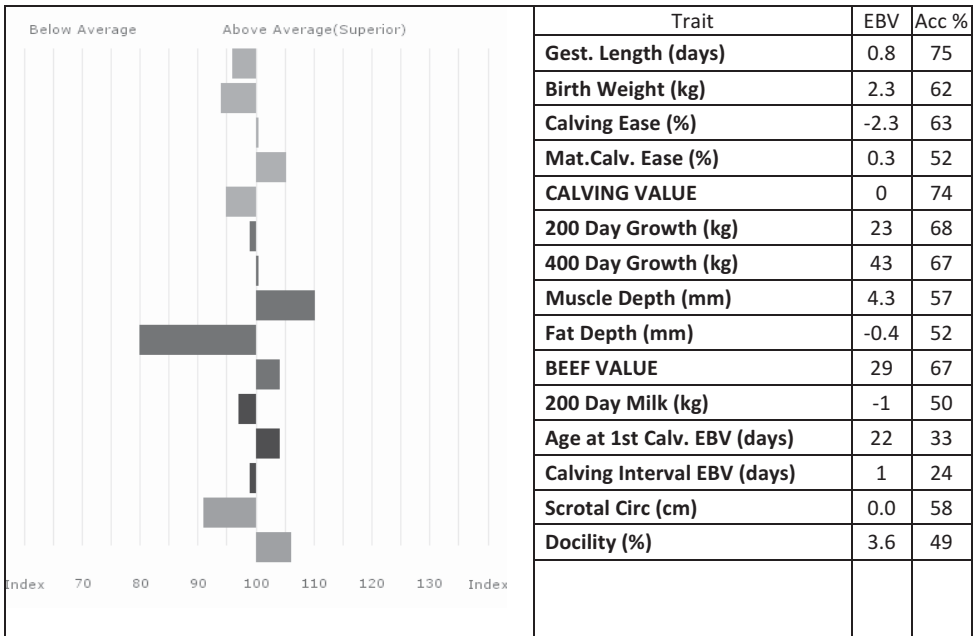
gs. SAPHIR 36-15-082-247

gd. LODGE VIOLET CBM04-114

**Dam** **CARNEW DANIELLE AEN08-005**

gs. LUDO 19-95-012-472

gd. CARNEW UPTOWNGIRL AEN03-002



Adjusted Weights (kg)      100      200      300      400      500      Scanned  
204      369      0      0      0      NO

**Lot 23 Mr M Loughran  
MILLGATE MIMIC**

Born 31/05/2016 LFR16-6337  
Grade: 99% LIMOUSIN  
Natural Calf

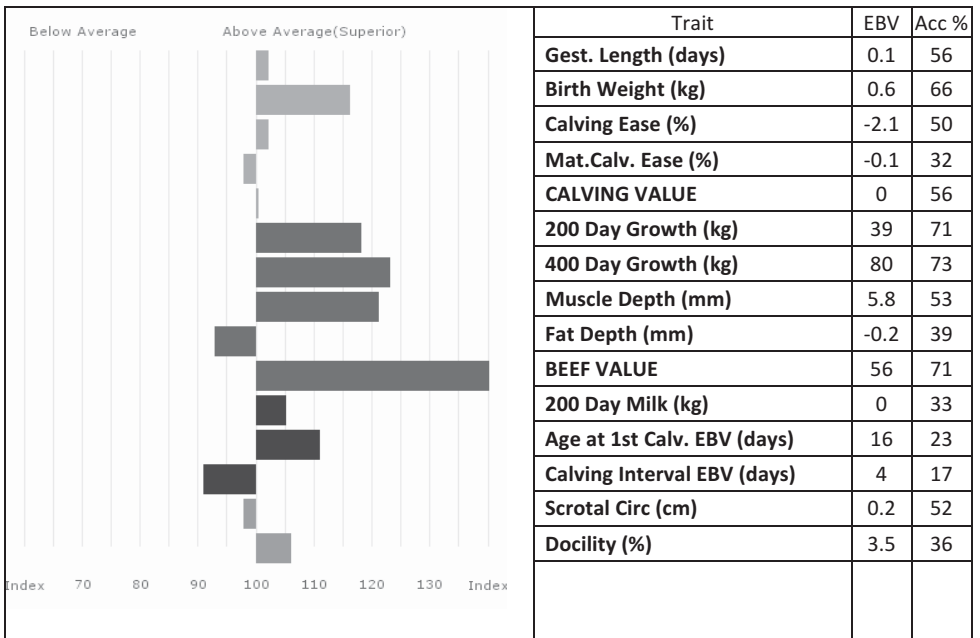
**UK 9630001/2633-7**

**Sire NEWHILLFARM ISAAC MSC13-5002**

gs. BAVARDAGE 22-57-773-618  
gd. NEWHILLFARM DINGO MSC08-093

**Dam MILLGATE IDENTICAL LFR13-4867**

gs. CONDOR 19-33-099-583  
gd. KILCURRY CAILIN IE251022720201



Adjusted Weights (kg) 100 200 300 400 500 Scanned  
181 329 469 614 0 NO

# CLASS 5 JUNIOR BULLS

**Lot**     **Mr M Loughran**  
**24**     **MILLGATE MG**  
 Born 01/06/2016  
 Got by AI Natural Calf

**LFR16-6326**

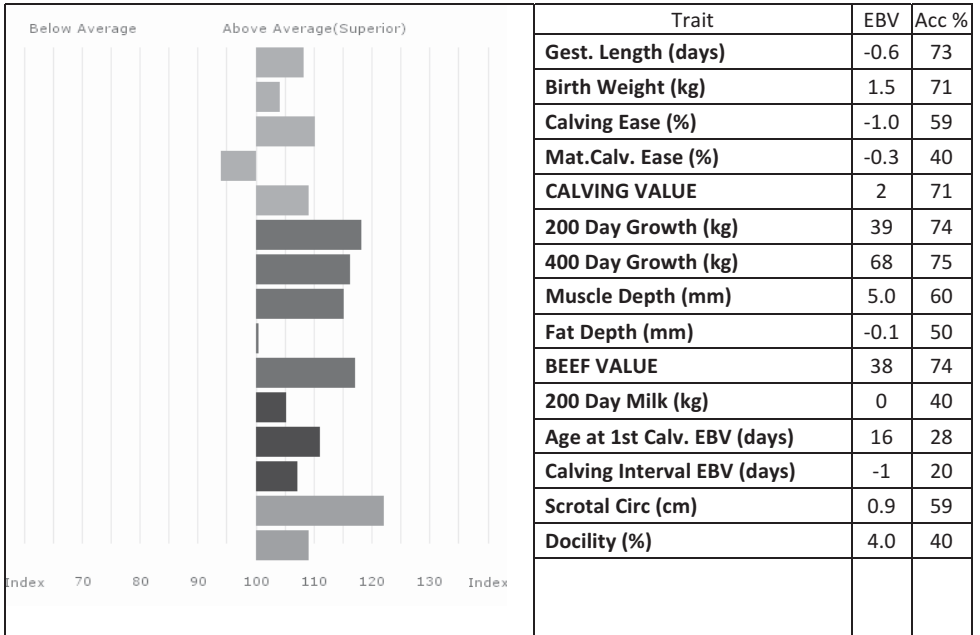
**UK 9630001/2632-6**

**Sire**     **NORMAN ELY NBB09-004**

gs. SAPHIR 36-15-082-247  
 gd. NORMAN BETRYS NBB06-019

**Dam**     **MILLGATE GEEWIZZ LFR11-005**

gs. CONDOR 19-33-099-583  
 gd. TREETOPS TARA HEC02-081



Adjusted Weights (kg)     100     200     300     400     500     Scanned  
 198     353     495     645     0     NO

**Lot Messrs McKenna Bros**  
**25 ARCHIES MULBERRY**

Born 06/06/2016 MXT16-4223  
 Got by AI Natural Calf

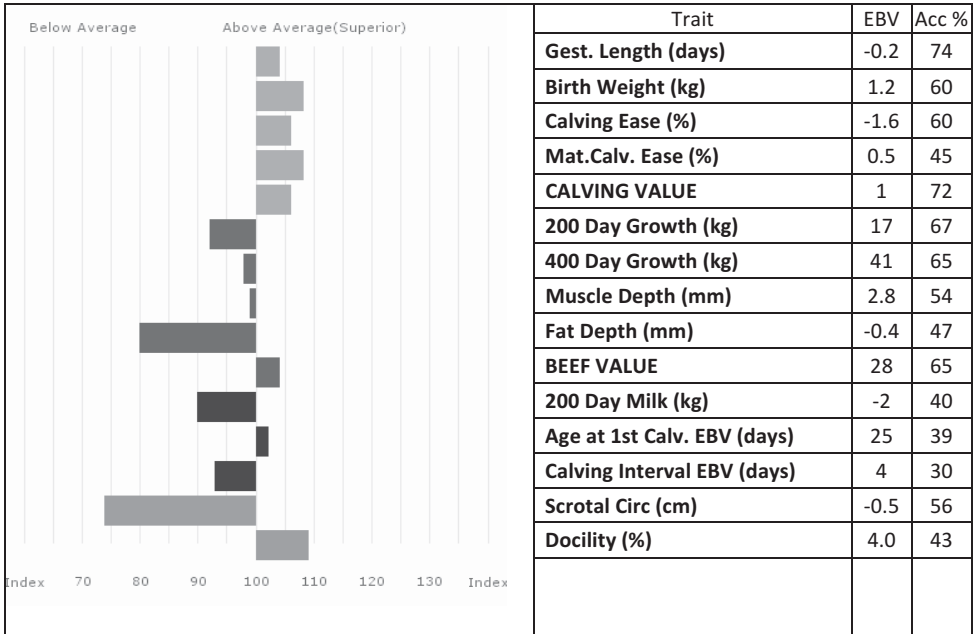
UK 9562217/0422-3

**Sire GOLDIES HALLMARK GS12-1258**

gs. WILODGE VANTASTIC WEY04-037  
 gd. GOLDIES BEAUTY GS06-689

**Dam ARCHIES HERMES MXT12-018**

gs. VIVALDI 36-15-015-938  
 gd. ARCHIES DESIGNER MXT08-019



Adjusted 100 200 300 400 500 Scanned  
 Weights (kg) 152 265 0 541 670 NO

Notes Well bred strong young bull



---

**Lot**     **Victor & Stephen Keys**

**26**     **ASHVIEW MAX**

Born 12/06/2016

KEK16-9751

UK 9631492/0975-1

Got by AI Natural Calf

**Sire**     **AMPERTAINÉ ELGIN MGD09-039**

gs. GLENROCK VENTURA IE04-432  
gd. AMPERTAINÉ CARLA MGD07-036

**Dam**     **TOGHERDOO HONEY KCY12-002**

gs. BROADMEADOWS CANNON CAVC-031  
gd. ASHMARA CLASSYGIRL MGP07-015

Notes     Long clean bull with good end & style

---

**Lot**     **Mr G M McCague**

**27**     **BRIDGEVIEW MASTER**

Born 22/06/2016

MQV16-8841

UK 9420414/0884-1

Natural Calf

**Sire**     **DONNELLY HERNANDO IE271897790256**

gs. WILODGE VANTASTIC WEY04-037  
gd. NEWTOWN TRIXIE IE231230920103

**Dam**     **BRIDGEVIEW IVY MQV13-009**

gs. ROUNDFIELD EMAZON IE131679940012  
gd. BRIDGEVIEW CLASSY MQV07- 019

---

**Lot**     **Mr G M McCague**

**28**     **BRIDGEVIEW MCAULEY**

Born 25/06/2016

MQV16-8863

UK 9420414/0886-3

Natural Calf

**Sire**     **DONNELLY HERNANDO IE271897790256**

gs. WILODGE VANTASTIC WEY04-037  
gd. NEWTOWN TRIXIE IE231230920103

**Dam**     **PENNYS URANIA WEE03-091**

gs. ELRICK RAKETEER MNU00-029  
gd. PENNYS RAINBOW WEE00-075

---

# CLASS 6 JUNIOR BULLS

**Lot 29 Mr D Hume  
CULNAGECHAN MULLER**

**Born 01/07/2016      HQG16-8136**  
Natural Calf

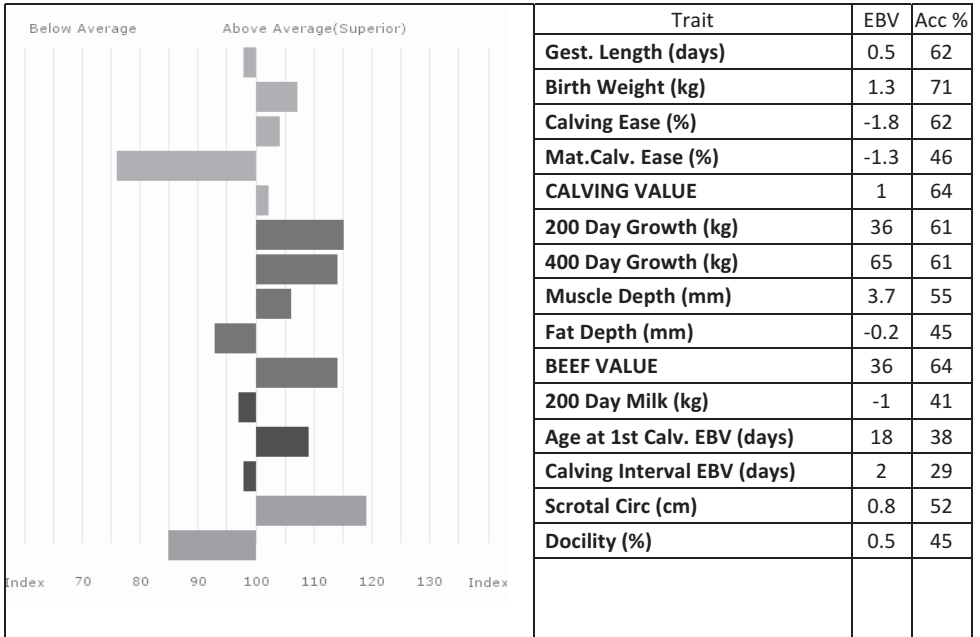
**UK 9060789/1813-6**

**Sire IVEAGH GILKES QDT11-003**

gs. HALTCLIFFE UNDERWRITER RP03-003  
gd. CARHILL DAVINA KAQ08-002

**Dam CULNAGECHAN ELITE HQG09-023**

gs. HEROS 36-92-005-318  
gd. CARMORN PENNY MCN99-025



Adjusted Weights (kg)      100      200      300      400      500      Scanned  
   200      368      540      711      0      NO

---

**Lot 30**    **Mr T J Adams**  
**FEDNEYHOUSE MARIO**  
Born 12/08/2016                      ACU16-007                      **UK 9271273/2111-7**  
Natural Calf

**Sire**    **AGHADOLGAN ILLUSTRATOR SLC13-018**    gs. TOWTHORPE DUBAI TGL08-528  
gd. AGHADOLGAN GEORGEIOUS SLC11-004

**Dam**    **FEDNEYHOUSE HENRIETTA ACU12-005**    gs. GUARDS BOOMER LAA06-008  
gd. NAPOLIE 19-97-009-457

---

**Lot 31**    **Mr GN Martin**  
**ASHMARA MIMOSA**  
Born 01/09/2016                      MGP16-019                      **UK 9391941/1011-7**  
Got by AI Natural Calf

**Sire**    **HALTCLIFFE DANCER RP08-753**                      gs. SYMPA 48-01-006-969  
gd. CLOUGHHEAD ROMANY HCX00-051

**Dam**    **MILLBURN BEATRICE IE181698320403**    gs. PACHA 19-30-318-295  
gd. KILCOAN SARAH IE131590860270

---

**Lot 32**    **Mr W McAllister**  
**ARTNAGULLION MASTER**  
Born 06/09/2016                      MRO16-5591                      **UK 9062916/0559-1**  
Got by AI Natural Calf

**Sire**    **GUARDS BOOMER LAA06-008**                      gs. ROCKY 36-15-030-964  
gd. ARDBRACK SPECIAL GAU01-112

**Dam**    **ARTNAGULLION JANTOUSH MRO14-001**    gs. AMPERTAINÉ FOREMAN MGD10-039  
gd. TEESHAN SHANTOUSH RGP01-002

---

---

## CLASS 7 FEMALES

**Lot 33**     **Mr N Drennan**  
**DRUMADARRAGH LARA**  
Born 19/01/2015     DET15-3297     UK 9061407/0329-7  
Got by AI Natural Calf

**Sire**     **IVEAGH GILKES QDT11-003**     gs. HALTCLIFFE UNDERWRITER RP03-003  
gd. CARHILL DAVINA KAQ08-002

**Dam**     **DRUMADARRAGH HEATHER DET12-002**     gs. DRUMADARRAGH FABIO DET10-002  
gd. DRUMADARRAGH ERIN DET09-002

Notes     Service details at time of sale

---

**Lot 34**     **Mr N Drennan**  
**DRUMADARRAGH LUCY**  
Born 18/04/2015     DET15-002     UK 9061407/0330-1  
Got by AI Natural Calf

**Sire**     **VIRGINIA ANDY IE121657690563**     gs. ELITE POPSI TOLP-010-FOT  
gd. MARLHILL NAOMI MAHN-004

**Dam**     **DRUMADARRAGH EMILY DET09-001**     gs. MILBROOK VIC IE281084580490  
gd. DRUMADARRAGH TROIKA DET02-001

Notes     Service details at time of sale

---

**Lot 35**     **Dermot McCusker**  
**KILCLASS LULLABY**  
Born 02/11/2015     QIJ15-0853     UK 9270118/1085-3  
Got by AI Natural Calf

**Sire**     **AMPERTAINÉ ELGIN MGD09-039**     gs. GLENROCK VENTURA IE04-432  
gd. AMPERTAINÉ CARLA MGD07-036

**Dam**     **LARKHILL HARMONY MMU12-014**     gs. CONDOR 19-33-099-583  
gd. LARKHILL FIONA MMU10-007

---

---

**Lot**     **Frank McConalogue**  
**36**     **CLORNEY MADONNA**  
Born 05/06/2016     QDP16-1516     UK 9541548/0151-6  
Natural Calf

**Sire**     **JALEX IDIOT AFW13-9784**     gs. AMPERTAINE FOREMAN MGD10-039  
gd. RAFFERTYS FERNATWO RJX10-030

**Dam**     **CLORNEY HILDA QDP12-007**     gs. WILODGE TONKA WEY02-002  
gd. CROOBVIEW FAITH JGR10-002

---

**Lot**     **Frank McConalogue**  
**37**     **CLORNEY MARY**  
Born 10/06/2016     QDP16-1494     UK 9541548/0149-4  
Natural Calf

**Sire**     **JALEX IDIOT AFW13-9784**     gs. AMPERTAINE FOREMAN MGD10-039  
gd. RAFFERTYS FERNATWO RJX10-030

**Dam**     **KILLYDUN JENNY QEZ14-0171**     gs. POINTHOUSE FABREGAS DHU10-006  
gd. LISMOYLE DIVA BOC08-100

# CLASS 8 FEMALES

**Lot** Mr M Loughran  
**38** **MILLGATE MASCOT**

Born 03/11/2016 LFR16-6525  
Got by AI Natural Calf

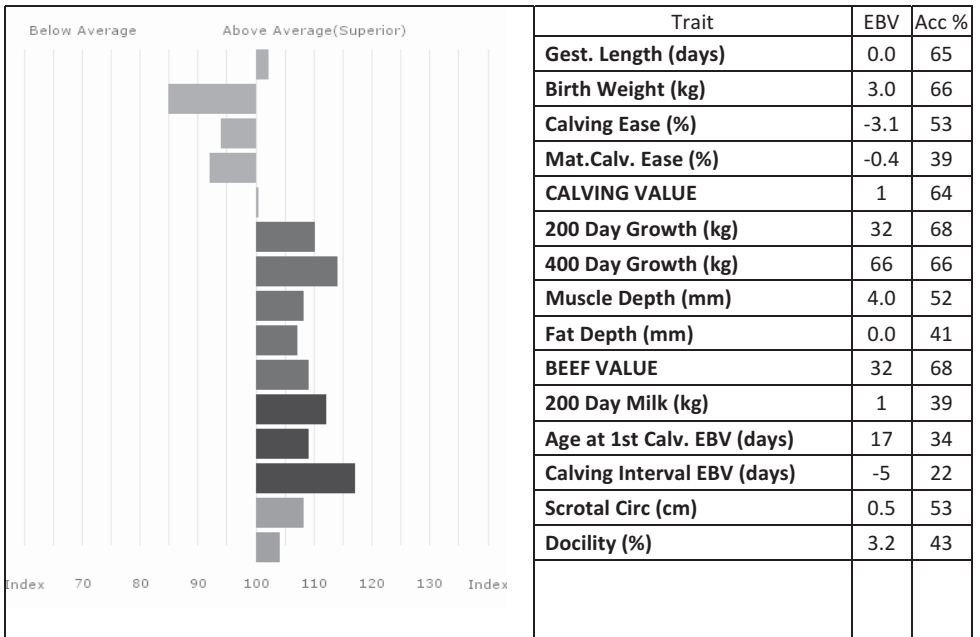
UK 9630001/2652-5

**Sire** **NORMAN INVENTOR NBB13-1063**

gs. CLARAGH FRANCO RJT10-013  
gd. NORMAN CRYSTAL NBB07-034

**Dam** **MILLGATE FAIRY LFR10-002**

gs. MILLGATE CAESAR LFR07-025  
gd. BALLYLINE TWINKLE IE311149610208



Adjusted Weights (kg) 100 149 200 251 300 0 400 0 500 0 Scanned NO

**Lot** Mr M Loughran  
**39** **MILLGATE NELLY**

Born 25/01/2017  
 Got by AI Natural Calf

LFR17-6621

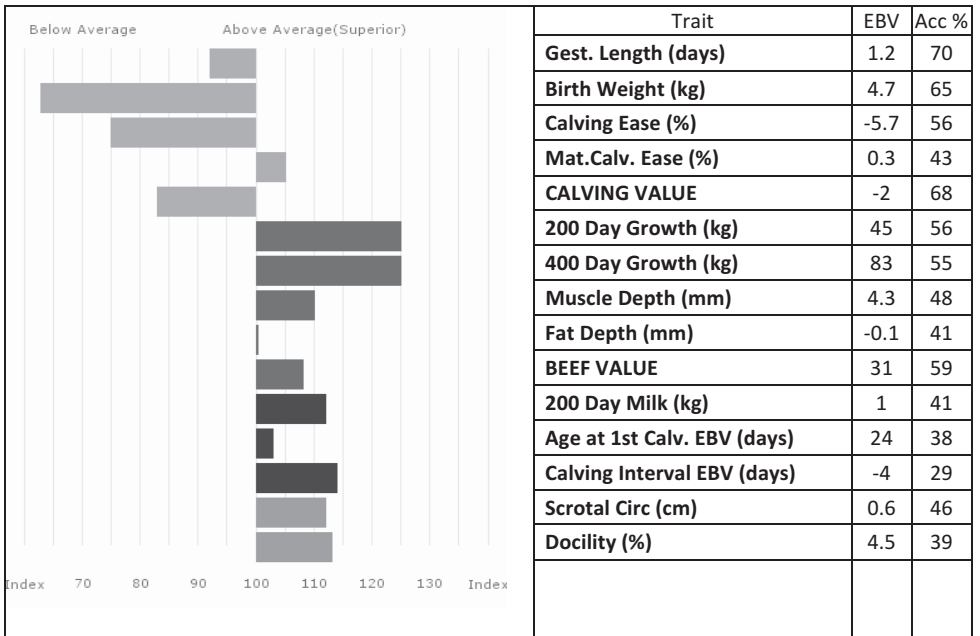
UK 9630001/2662-1

**Sire** **NORMAN INVENTOR NBB13-1063**

gs. CLARAGH FRANCO RJT10-013  
 gd. NORMAN CRYSTAL NBB07-034

**Dam** **MILLGATE HAIRYFAIRY LFR12-027**

gs. SYMPA 48-01-006-969  
 gd. BROOKLAND TULIP ANDT-091



Adjusted Weights (kg) 100 200 300 400 500 Scanned  
 139 0 0 0 0 NO

**Lot** Mr M Loughran  
**40** **MILLGATE NOUGAT**

Born 27/01/2017 LFR17-6643  
 Natural Calf Twin to Female

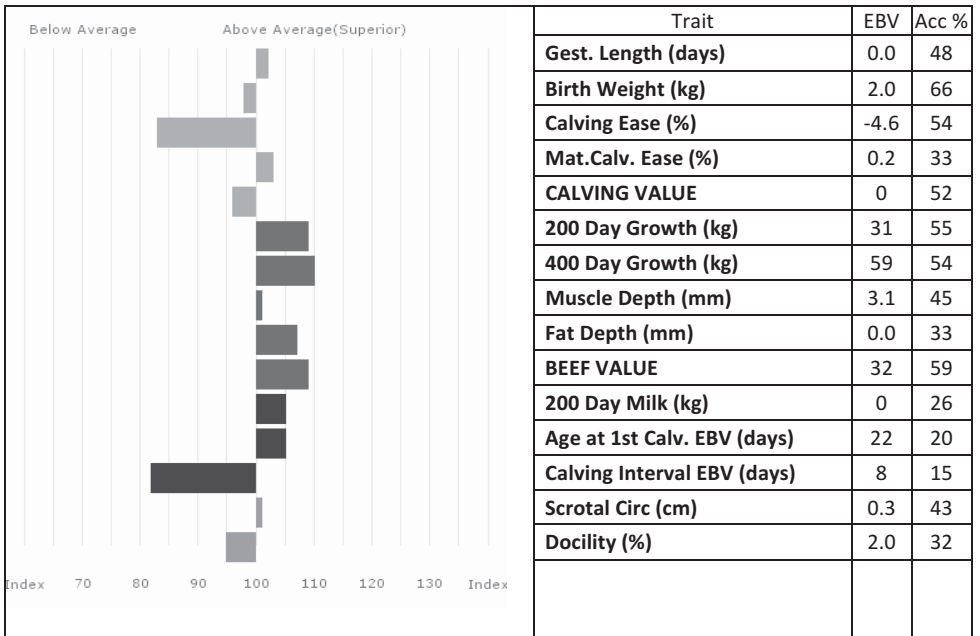
UK 9630001/2664-3

**Sire** LYNDERG JUDGE LDG14-1227

gs. LYNDERG HERO LDG12-009  
 gd. ANITA 87-24-651-071

**Dam** MILLGATE ICING LFR13-4635

gs. CARMORN GREENCASTLE MCN11-004  
 gd. MILLGATE ECLAIR LFR09-037



Adjusted Weights (kg) 100 200 300 400 500 Scanned  
 146 0 0 0 0 NO



---

**Lot**    **Mr P Campbell**

**41**    **SPAGE NETA**

Born 06/05/2017

CFS17-4684

UK 9102633/0468-4

Got by AI Natural Calf

**Sire**    **NORMAN ELY NBB09-004**

gs. SAPHIR 36-15-082-247

gd. NORMAN BETRYS NBB06-019

**Dam**    **SPAGE GOLDIE CFS11-011**

gs. KILLMACTRANSA DENMAN IE261094780178

gd. SPAGE BAMBI CFS06-005

Adjusted	100	200	300	400	500	Scanned
Weights (kg)	220	0	0	0	0	NO

---

**Lot**    **Mr P Campbell**

**42**    **SPAGE NETTLE**

Born 08/05/2017

CFS17-0313

UK 9103022/0031-3

Got by AI Natural Calf

**Sire**    **HALTCLIFFE DANCER RP08-753**

gs. SYMPA 48-01-006-969

gd. CLOUGHHEAD ROMANY HCX00-051

**Dam**    **BODEARG DANI CKR08-017**

gs. SAUVIGNON 23-02-858-738

gd. OXTOWN JINNEY FAU94-014

Adjusted	100	200	300	400	500	Scanned
Weights (kg)	215	0	0	0	0	NO

# NATIONAL BEEF ASSOCIATION

## TERMS AND CONDITIONS OF SALE

- a) For use by BREED SOCIETIES AT PUBLIC AUCTIONS held under the auspices of such Breed Societies
- b) For use by INDIVIDUAL MEMBERS OF SUCH BREED SOCIETIES at reduction and production sales (and dispersal Sales where these Terms are offered), conducted by auctioneers approved by the relevant Breed Society

### IMPORTANT

This document sets out the National Beef Association's Terms and Conditions ("Terms") under which Purchasers and Vendors enter into contracts at Breed Society Auctions and provides the framework under which any disputes arising therefrom may be resolved.

By buying and/or selling any such animal referred to in these Terms at any Auction you hereby agree to be bound by these Terms.

Please refer to the relevant Breed Society for breed specific standards as marked\*.

### 1 DEFINITIONS

In these Terms:

'AUCTION' means any Breed Society public auction or reduction and production sale (or dispersal sale where the Terms are expressly applied) in which a Sale is made.

'AUCTIONEERS' means the Auction House or other appropriate body responsible for conducting the Auction, including personnel appointed by the said Auction House responsible for facilitating Sales at the Auction and 'AUCTIONEER' shall be construed accordingly.

'BREED SOCIETY' means a National Beef Association affiliated and approved Pedigree Cattle Breed Society, a list of which is available on request to the National Beef Association.

'BULL FERTILITY REPORT FORM' and 'FEMALE FERTILITY REPORT FORM' means National Beef Association Form available on request to the National Beef Association or to the Auctioneers.

'CALVING DATE' means date calf is born.

'CLAIM' means a complaint by a Purchaser for a breach or breaches of warranty or warranties whether express or implied given by the Vendor in accordance with the clauses set out in these Terms.

'FERTILE' in respect of female cattle means an animal capable of conceiving by natural service and of carrying a calf for twelve weeks and the words 'INFERTILE', 'FERTILITY' and 'INFERTILITY' shall be construed accordingly.

'HERD BOOK' means Pedigree Register of cattle registered to the relevant Breed Society.

'INCAPABILITY' in respect of a bull means incapability of getting stock by natural service due to a pre-existing reproductive disorder or lack of libido, and the words 'CAPABILITY', 'CAPABLE' AND 'INCAPABLE' shall be construed accordingly.

'INSPECTOR' means a Breed Society appointed inspector who's function is to carry out Sale inspections as and when requested by, and to the standards set from time to time by the relevant Breed Society.

'MAIDEN HEIFER' means a heifer which has never been served, by natural means or artificial insemination.

'PURCHASER' means:

- a) the successful bidder for any animal in the Auction, or
- b) the successful bidder together with any such one or more persons with whom the said bidder is in partnership, or engaged in a joint venture, and whose names shall have been notified to the Auctioneers on the day of the Auction.

'SALE' means any sale of an animal at an Auction and 'SOLD', 'PURCHASE' and 'PURCHASED' shall be construed accordingly.

'SALE CATALOGUE' means publication issued by the relevant Breed Society or Auctioneers listing cattle offered at the Auction Sale.

'SERVICE' without qualification means both service by natural means and service by artificial insemination, and the words 'SERVE' and 'SERVED' without qualification shall be construed accordingly.

'SHIPMENT' means the sending or taking of an animal outside the United Kingdom.

'TERMS' means the National Beef Association's standard terms and conditions of sale set out herein and (unless the context otherwise requires) include any special terms and conditions agreed in writing between the Vendor and the Purchaser in accordance with Clause 2.2 hereof.

'VENDOR' means the person who has instructed the Auctioneers to sell his or her animal(s) on his or her behalf at the Sale.

'VETERINARY SURGEON' means member of the Royal College of Veterinary Surgeons.

'VETERINARY SURGEON'S CERTIFICATE' means certificate issued and signed by a Veterinary Surgeon.

## **2 BASIS OF THE CONTRACT**

- 2.1 These Terms shall (subject to Clause 2.2 hereof) form the basis of the Contract between the Vendor and the Purchaser and from the said Contract all conditions and warranties implied under the Sale of Goods Act 1979 or any other statutory enactment or implied by law or custom are expressly excluded to the fullest extent permitted by law including as subject to the Unfair Contract Terms Act 1977 or any statutory re-enactment or modification thereof.
- 2.2 These Terms may not be varied at any Auction or following any Sale in any way except by an announcement by the Auctioneers before or at the time of the Sale.
- 2.3 The National Beef Association and Breed Societies exclude all liability arising out of the use or application or form of these Terms to the fullest extent permitted by law.

## **3 GENERAL TERMS AND CONDITIONS OF SALE**

3.1 The Vendor warrants that:

- 3.1.1 each animal offered for Sale has been bred by the Vendor unless otherwise stated in the Sale Catalogue or by the Auctioneers before or at the time of Sale, and
- 3.1.2 the identity, pedigree, history and description of each animal submitted for Sale is as stated in the Sale Catalogue or otherwise disclosed to the Auctioneers for public announcement before or at the time of the Sale (including all flushings for embryo transfer, caesarean operations, calvings recorded, and semen collected) save to the extent that any mis-description would be apparent on inspection of the animal and/or Sale Catalogue.
- 3.2 The Vendor shall not be held liable for any Infertility or Incapability or other such deficiency of any animal not known by the Purchaser at the time of Sale if that deficiency was stated in the Sale Catalogue or by the Auctioneer before the Sale.
- 3.3 Only animals owned by a member of a Breed Society registered in the United Kingdom, and entered in the Herd Book of the Same Breed Society or registers supplementary thereto shall be offered for Sale under these Terms.

## **4 BULL BREEDING WARRANTIES BY THE VENDOR**

- 4.1 Subject to the provisions of Clauses 4.2, 4.3, 6, 8 and 11 hereof the Vendor warrants that each bull over the age of eight months at the date of the Sale is Capable of getting stock by natural service from fourteen\* months of age which shall be deemed to be fulfilled as soon as six females or fifty per cent of the herd whichever shall be the lesser number of the animals put to the bull are in calf to the bull by natural service subsequent to the Sale except where it would be reasonably apparent to a purchaser from the details provided in the Sale Catalogue that the bull would be Capable.

4.2 TRIAL PERIOD. The Purchaser shall give the bull sufficient time and opportunity to prove itself capable of getting stock by natural service while applying the Standards of Good Husbandry and Management as per Appendix A and, subject to Clause 4.3 hereof, in any event within six calendar months of the Sale date or within six calendar months of attaining the age of fourteen\*months (whichever is the later) ('THE TRIAL PERIOD'). A claim for infertility or Incapability will not normally be accepted in the case of an inexperienced bull until he has been allowed a minimum of three natural heat cycles with the females.

4.3 DEFERRING THE TRIAL PERIOD. If upon Purchase of the bull, it is found impracticable for the Purchaser to try the bull fairly within the Trial Period stated in Clause 4.2 above due to the Purchaser's normal calving programme, the Purchaser shall ON THE DAY OF THE SALE, or within the next seven days, give the Auctioneer notice IN WRITING of the month in which it is proposed to commence using the bull. AT THE DISCRETION OF THE VENDOR (in consultation with the Auctioneer, if applicable), the Vendor may defer the date of commencement of the Trial Period for a maximum period of three calendar months ('THE DEFERRAL PERIOD'). Acceptance or otherwise of the Purchaser's written request, shall be conveyed to the Purchaser by the Auctioneer in writing, within seven days of the request being made.

If the Trial Period is deferred the bull should not be used during the Deferral Period.

THE PURCHASER SHOULD NOTE THE TIME LIMIT FOR CLAIMS IN CLAUSE 8.1.2 BELOW.

## 5. FEMALE BREEDING WARRANTIES BY THE VENDOR

Subject to the provisions of Clauses 6, 8, and 11 hereof:

### 5.1 MAIDEN HEIFERS

Every maiden heifer over the age of twelve\* months at the date of the Sale is sold with warranties by the Vendor:

5.1.1 that it shall be fertile up to the age of twenty-eight\* months, which declaration shall be deemed to be confirmed as soon as such animal is certified by a Veterinary Surgeon to be not less than twelve weeks pregnant PROVIDED ALWAYS that no claim under these Terms shall be admitted before the animal reaches the age of twenty-four\* months (except in a case where a Veterinary Surgeon certifies that it is suffering from an abnormality or malfunction of the reproductive system which will permanently prevent fertility) and

5.1.2 that it is not in calf.

### 5.2 HEIFERS RECENTLY SERVED

Every heifer over the age of twelve\* months at the date of the Sale and described in the Sale Catalogue or by the Auctioneers at the time of the Sale as having been served less than twelve weeks prior to the date of the Sale is sold with warranties by the Vendor:

5.2.1 that it shall be fertile up to the age of twenty-eight\* months, which warranty shall be deemed to be fulfilled as soon as such animal is certified by a Veterinary Surgeon to be not less than twelve weeks pregnant PROVIDED ALWAYS that no claim under these Terms shall be admitted before the animal reaches the age of twenty-four\* months (except in a case where a Veterinary Surgeon certifies that it is suffering from an abnormality or malfunction of the reproductive system which will permanently prevent fertility), and

5.2.2 that if it is in calf it is in calf to the bull described in the Sale Catalogue or by the Auctioneers at the time of the sale PROVIDED ALWAYS that no warranty is given or to be implied that such heifer is in calf at the time of the Sale.

### 5.3 COWS UNSERVED

Every cow under the age of ten\* years at the date of the Sale and described in the Sale Catalogue or by the Auctioneers at the time of the Sale as unserved since last calving is sold with warranties by the Vendor:

5.3.1 that it shall be fertile for a period of twenty-six weeks from the date of the Sale, which warranty shall be deemed to be fulfilled as soon as such animal is certified by a Veterinary Surgeon to be not less than twelve weeks pregnant, and

5.3.2 that it is not in calf.

### 5.4 COWS RECENTLY SERVED



Every cow, under the age of ten\* years at the date of the Sale and described in the Sale Catalogue or by the Auctioneers at the time of the Sale as having been served less than twelve weeks prior to the date of the Sale is sold with warranties by the Vendor:

- 5.4.1 that it shall be fertile for a period of twenty-six weeks from the date of the Sale, which warranty shall be deemed to be fulfilled as soon as such animal is certified by a Veterinary Surgeon to be not less than twelve weeks pregnant, and
- 5.4.2 that if it is in calf it is in calf to the bull described in the Sale Catalogue or by the Auctioneers at the time of the Sale PROVIDED ALWAYS that no warranty is given or to be implied that any such cow is in calf at the time of the Sale.

#### 5.5 FEMALES IN CALF

Every cow or heifer stated in the Sale Catalogue or by the Auctioneers at the Sale to have been served on a date 'the Service Date' not less than twelve weeks before the date of the Sale is sold with warranties by the Vendor:

- 5.5.1 that it is in calf, and
- 5.5.2 that it is in calf to the bull described in the Sale Catalogue, or by the Auctioneers at the time of the Sale, and
- 5.5.3 that the expected Calving Date will be within a period of 263\* to 303\* days of the Service Date.

#### 5.6 FEMALES 'RUNNING WITH BULL'

Every cow or heifer described in the Sale Catalogue or by the Auctioneers at the time of the Sale as 'running with the bull' up to a date not later than twelve weeks before the Sale is sold with warranties by the Vendor:

- 5.6.1 that it is in calf, and
- 5.6.2 that it is in calf to the bull described in the Sale Catalogue or by the Auctioneers at the time of the Sale and that the latest expected calving date will be within a period of 263\* to 303\* days of the last possible Service Date.

#### 5.7 FEMALES WITH VETERINARY SURGEON'S CERTIFICATE OF POSITIVE PREGNANCY DIAGNOSIS

Scanning is not accepted as proof of diagnosis less than twelve weeks after the Service Date. Every cow or heifer stated in the Sale Catalogue or by the Auctioneers at the time of the Sale to be sold with a Veterinary Surgeon's Certificate of pregnancy diagnosis is sold with warranties by the Vendor:

- 5.7.1 that it is in calf, and
- 5.7.2 that it is in calf to the bull described in the Sale Catalogue or by the Auctioneers at the time of the Sale, and
- 5.7.3 that the expected calving date will be within a period of 263\* to 303\* days of the service date stated in such Veterinary Surgeon's Certificate notwithstanding that the said cow or heifer would not otherwise be Sold with the benefit of the above warranties.

THE PURCHASER SHOULD NOTE THE LIMITATIONS ON THE TIME LIMIT FOR CLAIMS IN CLAUSE 8.1.2 BELOW

#### 6. UDDER AND CLEANSING WARRANTIES BY THE VENDOR

Unless otherwise stated by the Auctioneers at the time of the Sale:

- 6.1 every cow in calf or suckling a calf and every heifer suckling a calf at the time of the Sale is sold with a warranty by the Vendor that it is sound in the udder and teats at the time of the Sale PROVIDED ALWAYS that any claim under this warranty shall be made to the Auctioneers not later than one hour from the close of the Sale, and if the Auctioneers in their absolute discretion (having taken such veterinary advice as may be appropriate) decide that the udder is not sound in all respects, the Sale of such animal shall be rescinded, and
- 6.2 every freshly calved cow or heifer is Sold with a warranty by the Vendor that it has satisfactorily cleansed before the Sale PROVIDED ALWAYS that:
  - 6.2.1 any Claim under this warranty shall be made, accompanied by a Veterinary Surgeon's Certificate, to the Auctioneers not later than three days from the date of the Sale, and

- 6.2.2 without prejudice to the rights of the Purchaser set out in Clause 11 hereof, the Purchaser shall have the right to arrange such veterinary treatment to the animal (the reasonable cost of which shall be borne by the Vendor) as may rectify the animal's condition.

## **7. LIMITATIONS ON THE APPLICATION OF VENDOR WARRANTIES**

7.1 None of the Vendor warranties in Clauses 4 and 5 above shall apply:

- 7.1.1 to any cow or heifer which has been subjected to any process involving the technique of embryo transfer or ova collection, unless that animal's subsequent natural breeding record (as declared in the Sale Catalogue) indicates not less than one natural calving since the said embryo transfer or ova collection;
- 7.1.2 to any cow or heifer, which has undergone a caesarean operation (as declared in the Sale Catalogue) unless that animal's subsequent natural breeding record (as declared in the Sale Catalogue) indicates not less than one natural non-surgical calving since the said operation;
- 7.1.3 to any cow or heifer which is declared by the Vendor to be a twin to a bull, unless before the Sale pregnancy has been certified in writing by a Veterinary Surgeon following rectal examination, or the animal has produced a full term calf;
- 7.1.4 to any animal which has not been maintained by the Purchaser at all times since purchase in a normal breeding condition, in accordance with the Standards of Good Animal Husbandry and Management as per Appendix A;
- 7.1.5 to any animal Purchased for export outside the United Kingdom (unless a claim shall have been notified within the time limits imposed by Clause 8.1.2 hereof and proved correct after all examinations and procedures deemed necessary by the Veterinary Surgeon appropriate under these Terms has been carried out) before the date on which Shipment takes place;
- 7.1.6 to any animal, which has been rejected at the date of the Sale by its Breed Society Inspector or Inspectors, appointed for the purpose of that Sale;
- 7.1.7 to any animal which after the Sale has contracted an illness or suffered an injury which may affect its Fertility or Capability as the case may be after the Sale;
- 7.1.8 to any animal, which does not remain the property of the Purchaser unless the Purchase was by means of a hire purchase agreement and the title to, but not the right to possession of the animal has therefore been transferred to a finance or other hire purchase company;
- 7.1.9 to any animal, which does not survive until the completion of all examinations and procedures, deemed necessary by the Veterinary Surgeons appointed under Clauses 8, 9, and 10 hereof.
- 7.2 No Vendor warranty is given or to be implied that a cow or heifer will carry a full term or deliver a live or viable calf.

## **8. CLAIMS**

8.1 A Claim by a Purchaser shall not be valid unless:

- 8.1.1 the animal remains the property of the Purchaser except where it was Purchased by means of a hire purchase agreement and the title to but not the right to possession of the animal has therefore been transferred to a finance or other hire purchase company, and
- 8.1.2 the Purchaser has followed the Claims Procedure as set out in clauses 8.2-8.9 below and has given notice in writing to the Auctioneers of the intended Claim as soon as evidence supporting the Claim comes to the Purchaser's notice and in any event within the following time limits:

8.1.2.1 Under Clause 4

in the case of a bull:

within six calendar months:

- a) from the date of the Sale; or
- b) from the date when the bull attains the age of fourteen\* months; or
- c) from the date of the commencement of the Trial Period stated in Clause 4.3 above, whichever is the later date

8.1.2.2 Under Clause 5.1.1 and 5.2.1

- 6.2.2 without prejudice to the rights of the Purchaser set out in Clause 11 hereof, the Purchaser shall have the right to arrange such veterinary treatment to the animal (the reasonable cost of which shall be borne by the Vendor) as may rectify the animal's condition.

## **7. LIMITATIONS ON THE APPLICATION OF VENDOR WARRANTIES**

7.1 None of the Vendor warranties in Clauses 4 and 5 above shall apply:

- 7.1.1 to any cow or heifer which has been subjected to any process involving the technique of embryo transfer or ova collection, unless that animal's subsequent natural breeding record (as declared in the Sale Catalogue) indicates not less than one natural calving since the said embryo transfer or ova collection;
- 7.1.2 to any cow or heifer, which has undergone a caesarean operation (as declared in the Sale Catalogue) unless that animal's subsequent natural breeding record (as declared in the Sale Catalogue) indicates not less than one natural non-surgical calving since the said operation;
- 7.1.3 to any cow or heifer which is declared by the Vendor to be a twin to a bull, unless before the Sale pregnancy has been certified in writing by a Veterinary Surgeon following rectal examination, or the animal has produced a full term calf;
- 7.1.4 to any animal which has not been maintained by the Purchaser at all times since purchase in a normal breeding condition, in accordance with the Standards of Good Animal Husbandry and Management as per Appendix A;
- 7.1.5 to any animal Purchased for export outside the United Kingdom (unless a claim shall have been notified within the time limits imposed by Clause 8.1.2 hereof and proved correct after all examinations and procedures deemed necessary by the Veterinary Surgeon appropriate under these Terms has been carried out) before the date on which Shipment takes place;
- 7.1.6 to any animal, which has been rejected at the date of the Sale by its Breed Society Inspector or Inspectors, appointed for the purpose of that Sale;
- 7.1.7 to any animal which after the Sale has contracted an illness or suffered an injury which may affect its Fertility or Capability as the case may be after the Sale;
- 7.1.8 to any animal, which does not remain the property of the Purchaser unless the Purchase was by means of a hire purchase agreement and the title to, but not the right to possession of the animal has therefore been transferred to a finance or other hire purchase company;
- 7.1.9 to any animal, which does not survive until the completion of all examinations and procedures, deemed necessary by the Veterinary Surgeons appointed under Clauses 8, 9, and 10 hereof.
- 7.2 No Vendor warranty is given or to be implied that a cow or heifer will carry a full term or deliver a live or viable calf.

## **8. CLAIMS**

8.1 A Claim by a Purchaser shall not be valid unless:

- 8.1.1 the animal remains the property of the Purchaser except where it was Purchased by means of a hire purchase agreement and the title to but not the right to possession of the animal has therefore been transferred to a finance or other hire purchase company, and
- 8.1.2 the Purchaser has followed the Claims Procedure as set out in clauses 8.2-8.9 below and has given notice in writing to the Auctioneers of the intended Claim as soon as evidence supporting the Claim comes to the Purchaser's notice and in any event within the following time limits:

8.1.2.1 Under Clause 4

in the case of a bull:

within six calendar months:

- a) from the date of the Sale; or
- b) from the date when the bull attains the age of fourteen\* months; or
- c) from the date of the commencement of the Trial Period stated in Clause 4.3 above, whichever is the later date

8.1.2.2 Under Clause 5.1.1 and 5.2.1



8.4 In the case of a Claim under 5.1.2, 5.3.2, 5.5.1, or 5.7.1 the Purchaser shall when notifying such Claim, forward to the Auctioneers a Veterinary Surgeon's Certificate certifying the animal is or is not in calf as the case may be.

8.5 In the case of a Claim under Clause 5.2.2, 5.4.2, 5.5.2, 5.6.2, or 5.7.2 the Purchaser shall when notifying such Claim forward to the Auctioneers a Veterinary Surgeon's Certificate that the animal has produced a calf to a bull other than that stated to be the service sire.

8.6 In the case of a Claim under Clause 5.5.3, 5.6.3, or 5.7.3 the Purchaser shall, when notifying such Claim, forward to the Auctioneers a Veterinary Surgeon's Certificate, certifying that the animal has not calved to the stated Service Date.

8.7 In the case of any Claim, where the Claim concerns an animal Purchased for export outside the United Kingdom it shall have been notified and proved correct after all examinations and procedures deemed necessary by the Veterinary Surgeons appointed under these Terms have been carried out before the date of Shipment or before the relevant period in sub-clause 8.1.2 (whichever shall be the earlier date).

8.8 In the case of any Claim, the animal shall survive at least until completion of all examinations and procedures deemed necessary by the Veterinary Surgeons appointed under Clauses 8, 9 and 10 hereof.

8.9 Where notice of an intended Claim is given to the Auctioneers in accordance with sub-clause 8.1.2 the Auctioneers shall as soon as is reasonably practicable inform the Vendor and the Secretary of the Breed Society to which the animal is registered, and forward to the Vendor a copy of the Bull Fertility Form or Female Fertility Report Form and/or Veterinary Surgeon's Certificate if applicable.

## **9. EXAMINATION OF ANIMALS**

9.1 Following receipt by the Auctioneers of notice by the Purchaser of an intended Claim and such subsequent notice to the Vendor in accordance with the above clause 8 the Vendor may submit a request to the Auctioneers for a Veterinarian Surgeon appointed by the Vendor to examine the animal and upon being given notice of the same by the Auctioneers the Purchaser shall permit such examination.

9.2 Any examination carried out in accordance with clause 9.1 shall be carried out within 14 days of the Auctioneer notifying the Vendor of the Purchaser's Claim at the cost of the Vendor, such cost to be reimbursed by the Purchaser if it is deemed in accordance with clause 10 that the Purchaser does not have a valid Claim.

## **10. DISPUTE RESOLUTION**

10.1 Each party recognises that the other party's business relies in whole or in part upon the condition, Fertility and/or Capability of the animals Sold and, if a Claim has been submitted by the Purchaser in accordance with the prescribed time limits and procedures as set out in these Terms, the Vendor and Purchaser shall in the first instance upon notice by the Auctioneers of the Claim in accordance with clause 8.9 meet in a good faith effort to settle the Claim.

10.2 If the Claim cannot be resolved in accordance with clause 10.1 the dispute shall be determined by a Veterinary Surgeon appointed by agreement between the Purchaser and the Vendor. In default of any such agreement between the Vendor and the Purchaser as to a suitable Veterinary Surgeon, the parties shall notify the Auctioneers in writing of this failure to agree and the Auctioneers shall appoint a Veterinary Surgeon within 28 days of the Auctioneers receiving such notice from the parties.

10.3 The Veterinary Surgeon so appointed in accordance with clause 10.2 above shall have the power to make such directions as to the validity of the Claim including (but without prejudice to the generality of such directions) directions as to costs and directions under sub-clause 10.4 below, and to make such investigations as he thinks fit, and the Purchaser and the Vendor shall comply with such directions and shall co-operate in such investigations and shall provide such records and information to the Veterinary Surgeon as he may reasonably require.

10.4 If the Veterinary Surgeon so appointed in accordance with clause 10.2 above decides that further opportunities are required to prove whether or not a bull is Capable or, as the case may be, whether or not a cow or heifer is Fertile, he shall direct under what conditions and within what timescale such opportunities shall be afforded, and the Purchaser shall, if so directed by the Veterinary Surgeon, allow the Vendor to remove the animal from the Purchaser's premises and the Vendor shall, if so required by the Veterinary Surgeon, afford such opportunities as the Veterinary Surgeon may direct and shall, before removal of the animal, lodge with the Auctioneers the whole amount of the purchase money (or such part of it as the Purchaser has paid) for the animal, interest thereon to



accrue for the benefit of the Vendor pending the outcome of the dispute, such interest to be calculated on a daily basis at two percent above the base lending rate from time to time in force at Lloyds Bank plc.

- 10.5 The appointed Veterinary Surgeon's decision as to the condition, Fertility or Capability as the case may be of the animal shall be final and binding upon the Vendor and the Purchaser, PROVIDED ALWAYS that the Veterinary Surgeon may decide in favour of the Vendor if in his opinion the cow or heifer would have proved Fertile or the bull would have proved Capable within the Terms and period allowed, if within that period the appropriate opportunity or veterinary treatment had been given or the Standards of Good Husbandry & Management had been applied.
- 10.6 If the Veterinary Surgeon so appointed in accordance with clause 10.2 above decides in favour of the Vendor, then the Purchaser, or if he decides in favour of the Purchaser, the Vendor, shall pay or reimburse all reasonable veterinary and laboratory fees and any reasonable transport costs incurred by both parties in the course of the Claim being addressed in accordance with these Terms.

#### **Alternative Dispute Resolution**

- 10.7 If the parties cannot, or refuse to, resolve a Claim in accordance with the procedures set out clauses 10.1 – 10.6 above, they shall, with the assistance of the Centre for Effective Dispute Resolution ("CEDR") in London, seek to resolve the Claim amicably by using a single arbitrator, whose decision will be final and binding upon both parties. Unless otherwise agreed between the parties, the arbitrator will be nominated by CEDR.

#### **11. LIMITATION OF RIGHTS ON BREACH OF VENDOR WARRANTY**

- 11.1 Upon breach of any warranty contained in these Terms as accepted by the Vendor or as determined by a Veterinary Surgeon so appointed in accordance with clause 10 hereof the Purchaser shall have the right to return the animal, together with any calf born subsequent to the Sale, and recover from the Vendor:

- 11.1.1 the purchase money or such part of it as the Purchaser has paid;
- 11.1.2 interest thereon calculated on a daily basis at two percent above the base lending rate from time to time in force at Lloyds Bank Plc from the date upon which notice of the Claim was received by the Auctioneers to the date of return or the date of disposal of the animal as the case may be;
- 11.1.3 the reasonable expense of transporting any such animal to and from the Purchaser's premises;
- 11.1.4 the reasonable cost of any such animal's keep, as determined by the relevant Breed Society, from the date on which notice of the Claim was received by the Auctioneers to the date of return to the Vendor or the date of disposal of the animal as the case may be, not exceeding the slaughter carcass value of the animal at the date of return, which sum shall be assessed by the Auctioneers, whose assessment shall be final and binding upon the Vendor and the Purchaser;
- 11.1.5 the reasonable expenses (including laboratory fees) of any Veterinary Surgeon employed for the purpose of investigating the animal's condition, Fertility or Capability as the case may be and for making a claim under these Terms, BUT THE PURCHASER SHALL HAVE NO RIGHT TO CLAIM DAMAGES FROM THE VENDOR IN RESPECT OF:
- (i) ANY INDIRECT OR CONSEQUENTIAL LOSS SUCH AS (BUT NOT LIMITED TO) ANY LOSS OF PROFITS, OR
  - (ii) ANY OTHER LOSS WHATSOEVER.

#### **12. TIME LIMITS**

- 12.1 Time shall be of the essence of all Terms in which time limits are prescribed and a Claim made under any Vendor warranty herein will not be admitted unless made within the prescribed time limit, provided that where time limited for any person to do anything expires on a Sunday, Bank Holiday or Public Holiday or on a day following next after any such days then such Sunday, Bank Holiday or Public Holiday shall be excluded from the computation of the time.
- 12.2 In the computation of any period of time before or after the Sale or any other event, the day of the Auction or other event, as the case may be, shall be excluded.
- 12.3 All periods expressed as a number of days shall be taken to refer to that number of clear days, and similarly for any period of time.

### 13. NOTICES

Any notice required to be served on any person or body mentioned herein shall be deemed to have been duly served if left at or sent by prepaid first-class post to that person or body at the last known abode or principal place of business and shall if sent by post to that person or body at the last known abode or principal place of business be deemed to have been received on the fourth day after the date on which it was sent.

### 14. GENERAL

- 14.1 If any provision of these Terms is held by any competent Authority or Court to be invalid or unenforceable in whole or in part the validity of the other provisions of these Terms and the remainder of the provision in question shall not be affected thereby.
- 14.2 The headings in these Terms are for convenience only and shall not affect their interpretation.
- 14.3 Unless expressly provided to the contrary in these Terms no failure or delay in exercising any right under these Terms shall operate as a waiver thereof or extend to, or affect any other subsequent event, or impair any rights or remedies consequent thereon or in any way modify or diminish the rights of the relevant party under these Terms.
- 14.4 These Terms shall be personal to the Vendor and Purchaser and neither may, unless provided to the contrary in these Terms, assign, licence, sub-contract or otherwise purport to grant rights over or transfer the benefit of any such rights or obligations under these Terms without the prior written consent of the other party.
- 14.5 These Terms comprise the entire agreement between the parties in relation to the subject matter of these Terms.
- 14.6 The validity, construction and performance of these Terms shall be construed in accordance with English Law and governed by the Laws of England and the parties submit to the exclusive jurisdiction of the English Courts.

## THE NATIONAL BEEF ASSOCIATION

Revision December 2014

### Annex 1

#### **Guidelines for the Standards of Good Husbandry and Management In respect of bulls purchased at Sales**

Taking care to settle a newly purchased bull properly will assist in ensuring that you have many years of good service from him.

Under the National Beef Association's Terms and Conditions of Sale the Purchaser is required to maintain the animal in normal breeding condition, in condition with the rules and practice of Good Animal Husbandry and Management, as referred to in clauses 4.2 and 7.1.4 and 8.3.2.

Following Purchase the National Beef Association would require a Purchaser to adhere to the following points to fulfil the requirement of Good Husbandry and Management:

- 1 The bull should not be used within two weeks of the date of Purchase
- 2 The Purchaser should ensure that the bull is in normal breeding condition before use
- 3 In consultation with the Vendor, the Purchaser should maintain the bull on its current diet and only introduce any new feed gradually
- 4 When the bull is first used, try it with 1 or 2 smaller females first, in a yard on a non-slip surface, so he is introduced to service gradually and safely. Observe him closely to ensure that he is serving the female properly
- 5 Once the Purchaser is satisfied that these females are not returning, then he should put the bull out with more females. 20 to 25 females should be a maximum in the first year.

These are guidelines only. Purchasers should be aware that should they choose not to follow them they might invalidate these Terms. In addition you may refer to the relevant Breed Society's guidelines.

# **Future Sales & Events**

**N.I. LIMOUSIN CATTLE CLUB**

**PEDIGREE CALF FAIR & BEEF NI EXPO**

**Saturday 18th November 2017**

**Balmoral, Belfast**

-oOo-

**BLCS PEDIGREE BULL & FEMALE SALE**

**Monday 12th February 2018**

**Dungannon N. Ireland**

-oOo-

More info [www.limousin.co.uk](http://www.limousin.co.uk) "click" associated clubs "click" Northern Ireland

# Overnight Accommodation

## HOTELS

Valley Hotel, 60 Main Street, Fivemiletown	TEL NO. 028 8952 1505
Four Ways Hotel, 41-45 Main Street, Fivemiletown	TEL NO. 028 8952 1260
Cahannon Inn & Autolodge, 212 Ballinakelly Road, Dungannon	TEL NO. 028 8772 4488
Greenvale Hotel, 57 Drum Road, Cookstown	TEL NO. 028 8676 2243

## BED & BREAKFAST

Beech Lodge, 41 Glenhoy Road, Augher	TEL NO. 028 8554 8106
Ashlone House, 76 Colebrooke Road, Fivemiletown	TEL NO. 028 8952 1553
The Grange, 15 Grange Road, Ballygawley	TEL NO. 028 8556 8053
Station House, Colebrooke Road, Fivemiletown	TEL NO. 028 8952 1824
Chruch View, 2 Murley Road, Fivemiletown	TEL NO. 028 8952 2059
Rehaghy Lodge, 35 Rehaghy Road, Aughnacloy	TEL NO. 028 8555 7693
Park View, 3 Victoria Road, Dungannon	TEL NO. 028 8772 5291
Charlemont House, 4 The Square, Moy	TEL NO. 028 8778 4755/ TEL NO. 028 8778 4895
Avondale, 29 Killycolp Road, Cookstown	TEL NO. 028 8676 4013
Killcolp House, 21 Killycolp Road, Cookstown	TEL NO. 028 8676 3577/ TEL NO. 028 8676 2859

## GUEST HOUSES

Askins Bar, 56 Main Street, Ballygawley	TEL NO. 028 8556 8910
Ryandale Inn, 16-19 The Square, Moy	TEL NO. 028 8778 4629
McGirrs Guesthouse, 7 Grange Road, Dungannon	TEL NO. 028 8774 7324
Grange Lodge, 7 Grange Road, Dungannon	TEL NO. 028 8778 4212
Corick Country House, 20 Corick Road, Clogher	TEL NO. 028 8554 8216
Reah's Luxury Accom, 24 Killyman Road, Dungannon	TEL NO. 028 8772 5575
Stangmore Country House, 65 Moy Road, Dungannon	TEL NO. 028 8772 5600
Glenvar Guesthouse, 111 Tullyvar Road, Aughnacloy	TEL NO. 028 8555 7062

## SELF CATERING

Ashfield House, Ashfield Park, Clogher	TEL NO. 028 8554 8684
Blessingbourne Holiday Flats, Blessingbourne, Fivemiletown	TEL NO. 028 8952 1188
Drumard Cottage, 66 Drumhubbert Road, Dungannon	TEL NO. 028 8773 8657

# **N.I. LIMOUSIN CENTRE**

# **DUNGANNON**

# **FARMERS' MART**

**90 Granville Road, Dungannon, Co. Tyrone**

## **WEDNESDAY**

Dropped Calves, Sucklers, Store Bullocks & Heifers

## **THURSDAY**

Fat and Store Lambs, Fat Ewes and Breeding Stock

## **2nd FRIDAY each Month**

Machinery Sale

## **3rd SATURDAY each Month**

Poultry Fair, Car Boot and Home Produce Sale

## **LAST FRIDAY each Month**

Horses and Pony Sale

## **PEDIGREE SALES:**

Many new Pedigree Shows and Sales of Sheep and Cattle  
**(To be advertised in Farming Press)**

## **PROPERTY SALES AND LAND LETTINGS**

as Advertised -

**Quota Brokers Telephone: (028) 8772 2727**

**Approved Sale Yard for**

**BRITISH LIMOUSIN CATTLE SOCIETY**

**NORTHERN IRELAND REGION**

---

# Prize List

Judge: Michael Gunn

	1st	2nd	3rd	4th
Class 1				
Class 2				
Class 3				
Class 4				
Class 5				
Class 6				
Class 7				
Class 8				

**Champion Senior & Reserve Bull to be sold at the end of the Senior class.**

**Champion Intermediate & Reserve Bull to be sold between the two Intermediate classes.**

**Champion Junior & Reserve Bull to be sold at the beginning of the Junior Classes.**

**Champion & Reserve Female to be sold at the end of the 2nd Class of Females.**

---

# Championship Winners

Junior Male Champion	<i>Lot</i>
Reserve Junior Male Champion	<i>Lot</i>

Intermediate Male Champion	<i>Lot</i>
Reserve Intermediate Male Champion	<i>Lot</i>

Senior Male Champion	<i>Lot</i>
Reserve Senior Male Champion	<i>Lot</i>

Overall Male Champion	<i>Lot</i>
Reserve Overall Male Champion	<i>Lot</i>

Female Champion	<i>Lot</i>
Reserve Female Champion	<i>Lot</i>

Overall Supreme Champion	<i>Lot</i>
Reserve Overall Supreme Champion	<i>Lot</i>

# FREE £250 BUYERS DRAW

For your chance to win £250

To be eligible for this draw  
please fill in the following  
information with **ALL** your  
contact details.



Name \_\_\_\_\_

Address \_\_\_\_\_

\_\_\_\_\_

\_\_\_\_\_

Mobile No \_\_\_\_\_

Email address \_\_\_\_\_

Lot No Purchased \_\_\_\_\_

Date of Sale \_\_\_\_\_



---

# NOTES

# LIMOUSIN



**5 STAR PERFORMERS**

**KILL OUT %**

**EASY  
CALVING**

**QUALITY  
BEEF**

**GROWTH**

**MILKINESS**

**1st  
for  
Beef  
Quality**

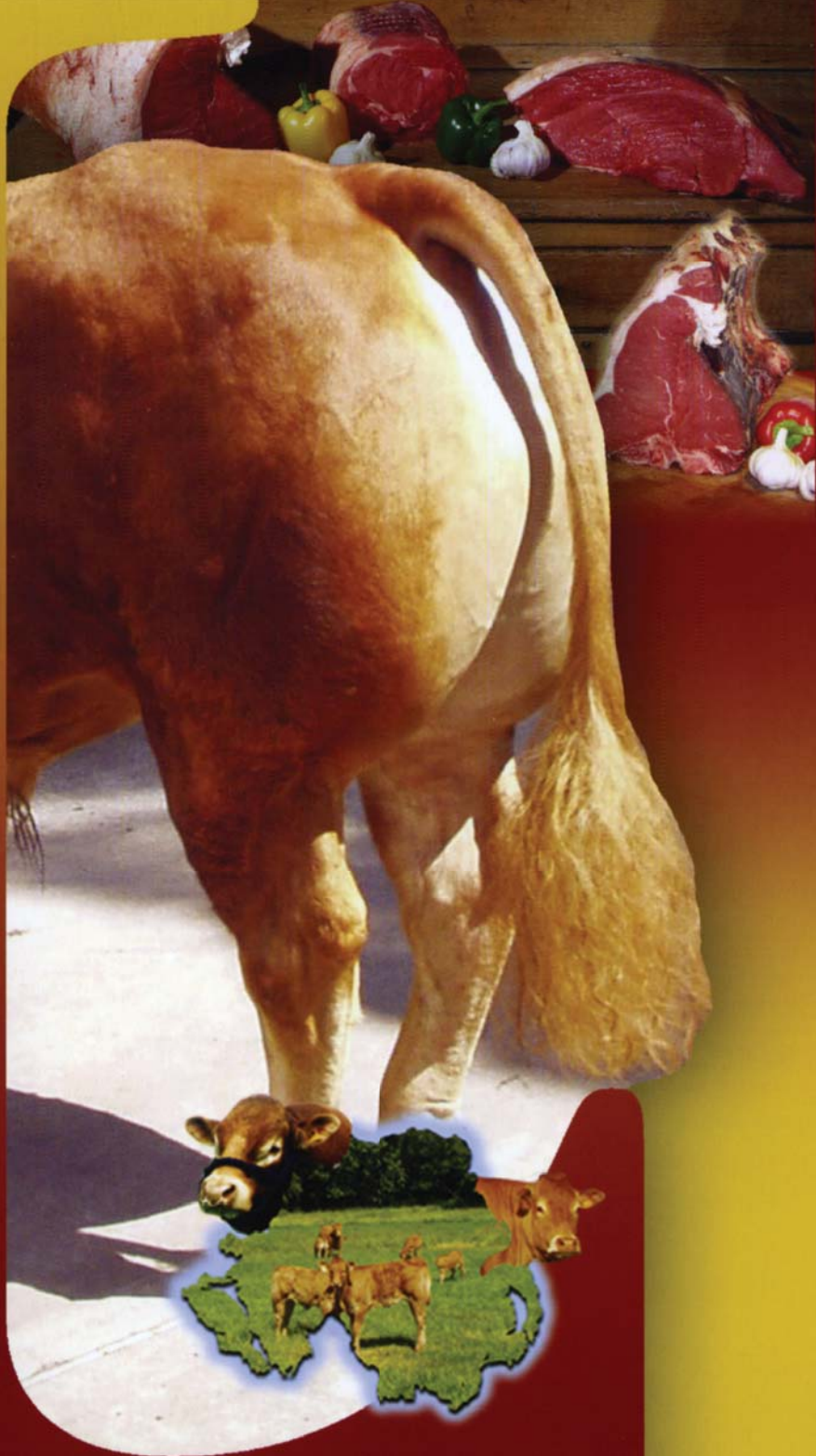
**The ideal suckler**

**The ideal  
prime beef carcass**

**1st  
for  
Maternal**



LIMOUSIN



in the  
**END**  
it's the  
quality  
that  
counts