

## SOUTH WEST LIMOUSIN SPRING SHOW & SALE



**Holsworthy Livestock Market  
Wednesday 25 April 2018**



*Sale to include 22 Bulls*

**Judging - 11am    Sale - 12 Noon**

**British Limousin Cattle Society Breeders' Sale**

**On behalf of Members of the South Western Limousin Breeders' Club**

**Auctioneer: Mark Bromell 07966 430001 or 01409 253275**

**Holsworthy Livestock Market, New Market Road, Holsworthy, Devon, EX22 7FA**

## SALE NOTES

### **SALE STATUS**

**British Limousin Cattle Society Breeders' Sale held under BLCS Auction Rules and subject to the recommended Terms & Conditions of Sale of the National Beef Association.**

### **ENTRY CLOSING DATE**

No substitution Bulls/animals will be accepted other than those in the catalogue. Any other Bulls/animals, not in the catalogue will go at the end, and be for Sale only.

### **ENTRY FEES**

The South Western Limousin Cattle Breeders' Club welcomes entries from Breeders from other Clubs.

All vendors need to pay the £15 subscription to the South West Limousin Cattle Breeders Club. Failure to do so may lead to non-acceptance of entry. The original pedigree certificate must accompany the entry.

### **TIMES**

Viewing and Inspection prior to Judging at 11am followed by the sale at 12 noon.

### **TRANSFER FEE**

Pedigree certificates will be transferred to purchasers free of charge by the British Limousin Cattle Society following the sale. For any Pedigree or Membership enquiries, please contact British Limousin Cattle Society Tel: 02476 696500

### **ORDER OF SALE**

Bulls sold in catalogue order. All bulls will be subject to an upset price of 2000 guineas and all females will be subject to an upset price of 800 guineas.

### **METHOD OF SALE**

All cattle will be sold in guineas (£1.05).

### **REGULATIONS**

All the animals will be sold subject to their individual breed society rules and regulations.

**To be Sold under Conditions of Sale as recommended by NBA Rules and warranties.**

## **VET INSPECTIONS**

**All animals will be vet inspected.**

## **UNLOADING**

Cattle must be on the premises by 9:00 am on the day of the sale. Overnight accommodation for cattle prior to sale can be made available by arrangement with the auctioneers.

## **BIO-SECURITY**

A strict bio-security plan will be in operation. Please arrive with clean clothes, and/or waterproof clothing and wellington boots.

## **TERMS**

All cattle entered for the sale will have their identification marks examined. Any marks found to have faulty, incorrect or illegible marks will be REJECTED from the sale. Vendors are therefore urged in their own interest to examine the tattoo marks/tags of sale cattle before the animal(s) leave the farm, so that faulty marks can be rectified in accordance with the required society procedures.

All bulls and haltered females entered for the sale must be adequately trained to lead by halter and must be paraded for inspection – unless exempted by the Stewards. Evidence of faults of temperament, vices, etc, may lead to disqualification. Any disputes that may arise between vendor and purchaser will not involve the Club

### **British Limousin Cattle Society**

**Concorde House**

**24 Warwick New Road**

**Leamington Spa**

**CV32 5JG**

Tel : 02476 696500

Fax : 02476 696716

### ***South Western Limousin Breeders Club:***

**Chairman:** Mark Quick, Loosebeare Manor, Zeal Monachorum, Crediton, Devon, EX17 6DW

TEl: 07970 039746

**Secretary:** Diane Richards, Southview Farm, Burtle, Bridgwater, Somerset, TA7 8NB

Tel: 01278 722275



## LIMOUSIN PERFORMANCE RECORDING

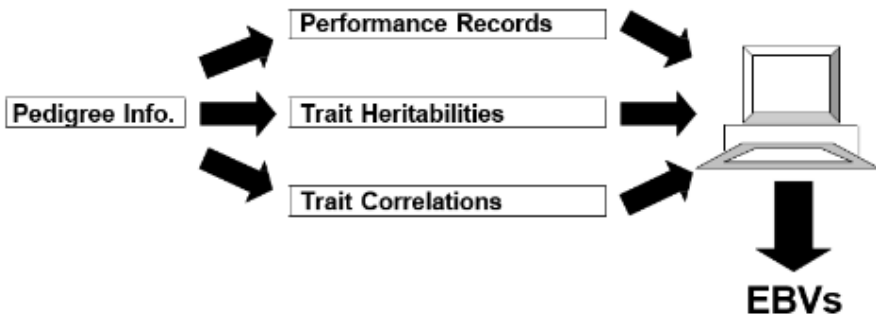
### HOW TO USE LIMOUSIN BREEDING VALUES

ESTIMATED BREEDING VALUES (EBVs) & GENOMIC BREEDING VALUES (GEBVs)

#### I. What Are EBVs?

Many factors influence the appearance and performance of a bull. For example, age, nutrition, management, age of dam, health, season, quality of farm and the genes it has inherited from its parents. The only factor that can be passed on to its calves, however, is its inherited genetic potential. Estimated Breeding Values are measures of that potential and are calculated from the following:

- Measurements from the animal itself
- Measurements from the animal's herd mates (known as 'contemporaries')
- Measurements from the animal's relatives and their contemporaries
- The degree to which one trait influences another (known as a 'correlation')
- The degree to which each trait is passed on to the next generation (known as 'heritability')



## 2. What Are GEBVs?

In March 2016, Genomic Breeding Values (GEBVs) became available for all Limousin cattle for a range of new Carcase Traits. In July 2017, GEBVs also became available for three new Female Fertility traits and Calf Survival. They are the first of their kind within the UK's beef sector and are the result of five years of research between British Limousin Cattle Society, ABP Food Group and SRUC.

**GEBVs take conventional EBVs a step further by using information from animals' DNA as well as the usual measurements of performance.** To produce the breeding value the DNA is compared to a DNA 'key' for the breed:

This key is created from a core population of Limousin animals that have been measured on-farm and in the abattoir as well as having DNA collected

The key is like a library that cross refers information from the DNA strand with different levels of abattoir performance.

GBVs are produced by comparing the DNA of an animal with the key. They are calculated from the correspondence of that animal's DNA with those in the library

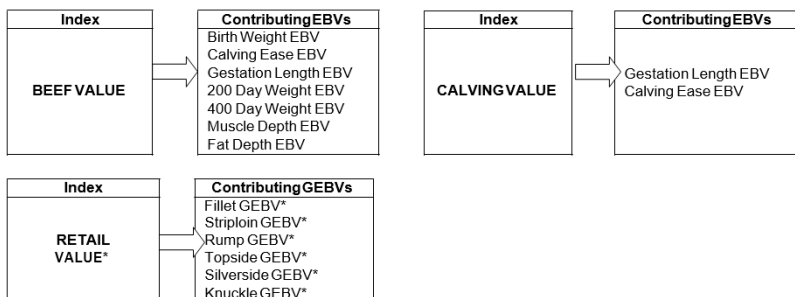
**GEBVs are used in exactly the same way as EBVs...**

Albeit they are produced in slightly different ways GEBVs are in essence breeding values that indicate genetic merit as EBVs do and the way the two are used should not differ (see paragraph 5 below).

## 3. What Are Breeding Indexes?

It is often desirable to select animals on the basis of more than one EBV/GEBV. Breeding Indexes focus on specific breeding goals and combine the appropriate EBVs/GEBVs in to a single figure based on their relative economic value. This is widely regarded as the most efficient method of selecting on a number of traits at once.

Three Breeding Indexes are available at sales, as follows:



\* GEBVs available for animals that have been genotyped for this purpose and where the values have been published by the owner.

**When using an Index it is important that your breeding objective is broadly similar to that of the Index in question, otherwise you may unwittingly change aspects of your herd that you did not necessarily want to.**

## 4. What Breeding Value Information Is Available?

In sale catalogues, EBVs & GEBVs are produced for up to eighteen traits that focus on an animal's economic performance.

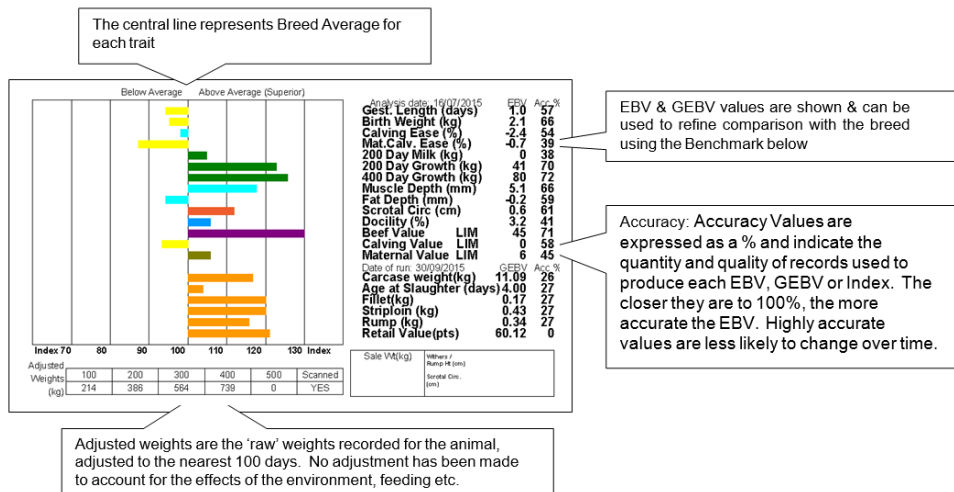
Trait	Breeding Value Indicates...	Look for...
<b>Birth Weight (kg)</b>	Genetic potential for calf weight at birth	<b>High negative EBVs</b> if you want low calf birth weights
<b>Calving Ease (%)</b>	Ease with which a bull's progeny will be born	<b>High positive EBVs</b> if you want less assisted calvings
<b>Maternal Calving Ease (%)</b>	Ease with which a bull's daughters will calve	<b>High positive EBVs</b> if you want less assisted calvings
<b>Gestation Length (days)</b>	Genetic potential for gestation length	<b>High negative EBVs</b> if you want short gestation lengths
<b>200 Day Milk (kg)</b>	The maternal component of 200 day growth (i.e. the contribution that the milking and maternal abilities of a bull's daughters make towards their calves' growth at 200 days of age)	<b>High positive EBVs</b> if you want daughters to wean heavier calves
<b>200 Day Weight (kg)</b>	Genetic potential for growth from birth to 200 days of age	<b>High positive EBVs</b> if you want high growth rates to weaning
<b>400 Day Weight (kg)</b>	Genetic potential for growth from birth to 400 days of age	<b>High positive EBVs</b> if you want high growth rates to finishing
<b>Muscle Depth (mm)</b>	Genetic potential for muscularity and potential to increase lean meat yield	<b>High positive EBVs</b> if you want good calf conformation
<b>Fat Depth (mm)</b>	Genetic potential for leaner carcasses	<b>Negative EBVs</b> if you want to produce leaner carcasses or take calves to heavier weights without penalty for fatness
<b>Age at 1<sup>st</sup> Calving (days)</b>	Genetic potential for early sexual maturity	<b>High negative EBVs</b> for a greater proportion of heifers that hold to 1 <sup>st</sup> service
<b>Calving Interval (days)</b>	Genetic potential for the time taken to get back in calf	<b>High negative values</b> to breed cows that get back in calf quickly
<b>Docility (%)</b>	Genetic potential for being calm when handled	<b>High positive values</b> for animals that are likely to be more calm when handled
<b>Scrotal Circumference (cm)</b>	Genetic potential for scrotal size. Linked to male serving capacity and puberty of daughters.	<b>High positive values</b> for animals with higher likely serving capacity and earlier maturing daughters.
<b>Age to Slaughter GEBV (days)</b>	Age at slaughter assuming a standard carcass weight of 350kgs	<b>High negative values</b> (less days) for animals that will reach 350 kg deadweight quicker
<b>Carcass Weight GEBV (kg)</b>	Carcass weight at a standard slaughter age of 600 days	<b>High positive values</b> for animals that will reach heavier carcass weights at 600 days of age
<b>Fillet GEBV (kg)</b>	Weight of fillet at a standard slaughter age of 600 days and carcass weight of 350kg	<b>High positive values</b> for higher fillet weights in the carcass
<b>Striploin GEBV (kg)</b>	Weight of striploin at a standard slaughter age of 600 days and carcass weight of 350kg	<b>High positive values</b> for higher striploin weights in the carcass
<b>Rump GEBV (kg)</b>	Weight of rump at a standard slaughter age of 600 days and carcass weight of 350kg	<b>High positive values</b> for higher rump weights in the carcass

Breeding values for further traits for each animal are available on [www.taurusdata.co.uk](http://www.taurusdata.co.uk). Enter animal name or ear number in the Quick Search box. You can also search by breeder and by breeding values ('Breeder Search' and 'EBV Search'). The additional traits available are:

- Longevity EBV & GEBV
- Silverside EBV & GEBV
- Calf Survival EBV & GEBV
- Topside EBV & GEBV
- Knuckle EBV & GEBV

## 5. How to Use the Information in This Catalogue

EBVs & GEBVs are expressed in the same unit as the recorded trait (eg kgs for 400 Day Weight, mm for Muscle Depth etc) are relative to the Breed Average. In sale catalogues, Breed Average for each trait is represented by the vertical line that is central on the bar chart. Bars that lie to the right of that line indicate EBVs/GEBVs that are above average. The further to the right they lie, the higher above Breed Average they are. Equally, bars that lie to the left of the line indicate EBVs/GEBVs that are below Breed Average. The further to the left they are, the further below Breed Average they are. An example is as follows:



The numeric EBV & GEBV values on the charts can be used to further refine comparison with the breed using the Breed Benchmark below. This is updated annually.

## 2018 Limousin Breed Benchmark

Trait	Bottom			Breed Avge	Top		
	1%	10%	25%		25%	10%	1%
Birth Weight (kg)	4.0	3.1	2.5	1.9	1.3	0.7	-0.3
Calving Ease (%)	-6.3	-4.6	-3.6	-2.5	-1.4	-0.4	1.3
Mat. Calv. Ease (%)	-1.4	-0.8	-0.4	0.1	0.5	0.9	1.6
Gest. Length (days)	4	2	1	0	-1	-2	-3
<b>Calving Value</b>	<b>LM-4C</b>	<b>LM-2C</b>	<b>LM-1C</b>	<b>LM1C</b>	<b>LM2C</b>	<b>LM3C</b>	<b>LM5C</b>
200 Day Growth (kg)	1	11	18	24	31	37	48
400 Day Growth (kg)	1	21	32	45	58	69	89
Muscle Depth (mm)	-0.7	1.0	1.9	3.0	4.1	5.1	6.8
Fat Depth (mm)	-0.5	-0.4	-0.2	-0.1	0.0	0.1	0.3
<b>Beef Value</b>	<b>LM5</b>	<b>LM14</b>	<b>LM20</b>	<b>LM26</b>	<b>LM32</b>	<b>LM37</b>	<b>LM47</b>
200-Day Milk (kg)	-5	-3	-2	-1	0	1	3
Age 1st Calv. (days)*	46	33	26	18	9	2	-11
Longevity (rel. no calves born to 6.5 yrs)*	-0.13	-0.08	-0.05	-0.02	0.02	0.05	0.10
Calv. Interval (days)*	9	5	2	-1	-3	-6	-10
Calf Survival (probability to 10 mths)*	-4	-3	-2	-1	0	1	2
Scrotal Circ. (cm)	-0.5	-0.2	0.0	0.3	0.5	0.7	1.1
Docility (%)	-1.1	0.7	1.7	2.8	4.0	5.0	6.7
Carcase Wt (kg)*	-6.1	-1.3	1.6	4.7	7.8	10.6	15.5
Slaught. Age (days)*	21	15	11	7	3	-1	-8
Fillet (kg)*	0.09	0.12	0.14	0.16	0.18	0.20	0.23
Striploin (kg)*	0.11	0.21	0.26	0.32	0.3	0.43	0.52
Topside (kg)*	0.53	0.74	0.86	1.00	1.14	1.26	1.47
Rump (kg)*	0.19	0.29	0.35	0.41	0.47	0.53	0.63
Silverside (kg)*	0.60	0.82	0.94	1.09	1.23	1.36	1.58
Knuckle (kg)*	0.17	0.28	0.34	0.41	0.48	0.54	0.65
<b>Retail Value*</b>	<b>LM12R</b>	<b>LM19R</b>	<b>LM23R</b>	<b>LM27R</b>	<b>LM31R</b>	<b>LM35R</b>	<b>LM41R</b>



## 6. Things to Consider...

- To establish just how much influence a bull will pass on to his progeny it is important to remember to halve the value of the EBV/GEBV, since the other half of a calf's genes comes from the cow.

For example, a bull with a 400-Day Growth EBV of +62 is estimated to have the genetic potential to be 62kg heavier at 400 days of age compared to a bull with an EBV of 0. His calves would be expected to be 31kg heavier at that age when compared to calves by a bull with an EBV of 0, since they only inherit half of their growth genes from their sire (the other half coming from their dam).

- Select animals using EBVs/GEBVs that are relevant to your farm, cow type and market
- Bear in mind that EBVs/GEBVs predict an animal's economic performance. They are no judge of factors such as soundness, locomotion, breed type etc and you must be satisfied with your potential purchase in these respects too.
- Consider the traits that will make you most money, but
- Don't forget to check traits you may be compromising in pursuit of your goals, such as Calving Ease etc
- EBVs/GEBVs change as time goes on. New calves and new performance records tell us more about animals' breeding potential. Limousin EBVs/GEBVs are updated three times per annum and all values will change as more information is added and the accuracy of the predictions increases.

## 7. EBV/GEBV & Pedigree Info Just a Click Away

**EBV, GEBV and pedigree information on all Limousin cattle are just a few internet clicks away...**

**Step 1:** Click the 'Taurusdata Online Herd Book' button on the Limousin Society homepage ([www.limousin.co.uk](http://www.limousin.co.uk)) or go direct to [www.taurusdata.co.uk](http://www.taurusdata.co.uk)

**Step 2:** In the 'All Breeds Quick Search' box type the name or ear number of the animal you are interested in or click on the 'Breeder Search' button to look at all animals belonging to or bred by a particular breeder

The site will then tell you the animal's owner/breeder details, its breeding values, its pedigree and list its progeny with full links to all of their information

## 8. Further Information

For further information, please contact Alison Glasgow, British Limousin Cattle Society on telephone 02476 696500, e-mail [alison@limousin.co.uk](mailto:alison@limousin.co.uk) or visit the BLCS web site [www.limousin.co.uk](http://www.limousin.co.uk), 'Performance Programmes'.

**Catalogue of 22 Pedigree Limousin Cattle**, held under BLCS Auction Sale Rules and subject to the recommended Conditions of Sale of the National Beef Association, including consignments from Arthurs, Nealford, Loosebeare, Higherpark, Bailea, Josh, Killerton, Kaprico, Highridge, Foxhillfarm.

## **INDEX OF EXHIBITORS**

<b>ALFORD, M</b> Foxhill Farm, Blackbourngh, Cullompton, Devon, EX15 2HU	<b>20</b>	<b>21</b>	<b>22</b>
<b>BRADFORD, LJ &amp; JM</b> Higher Park, Iddesleigh, Winkleigh, Devon, EX19 8BS	<b>7</b>	<b>8</b>	
<b>DUNN, GN &amp; LV</b> Ridgepark, Highridge Farm, Sampford Courtenay, Okehampton, Devon, EX20 2TF	<b>13</b>	<b>16</b>	
<b>GARTHWAITE, J &amp; M</b> Stoneleigh, Hele Lane, Frithelstockstone, Torrington, Devon, EX38 8JW	<b>9</b>		
<b>GREED, P</b> Columbjohn Farm, Rewe, Exeter, Devon, EX5 4ER	<b>5</b>	<b>12</b>	
<b>JONES, MT</b> Bailea, Hoel Senni, Brecon, Powys, LD3 8ST	<b>10</b>	<b>11</b>	
<b>LUXTON, MA &amp; D</b> Josh Farm, Marhamchurch, Bude, Cornwall, EX23 0HT	<b>2</b>	<b>4</b>	
<b>NEALE &amp; SON, JH</b> Wilkie Down, Boyton, Launceston, Cornwall, PL15 9RD	<b>3</b>	<b>17</b>	
<b>QUICK &amp; SONS, EW</b> Loosebeare Manor, Zeal Monachorum, Crediton, Devon, EX17 6DW	<b>6</b>	<b>14</b>	<b>15</b>
	<b>18</b>	<b>19</b>	
<b>STANBURY FARM PARTNERSHIP</b> Lower Larrick Farm, Lezant, Launceston, Cornwall, PL15 9QQ	<b>1</b>		

*A bacon bap for each exhibitor  
will be kindly supplied by The Cow Shed Café*



## SCHEDULE OF CLASSES

**Class 1** **Pedigree Bull** should be aged 14 – 30 months and halterbroken, sold in age order. This class will be split based on age on the sale day.

Kindly sponsored by:



**Class 2** **Pedigree Cow** served and/or suckling.

Kindly sponsored by:



**Class 3** **Pedigree Heifer** served and/or suckling to calf before 39 months of age. Halter tied not necessarily shown.

Kindly sponsored by:



**Class 4** **Pedigree Heifer** maiden. Halter tied not necessarily shown.

Kindly sponsored by:



**Class 5** **Commercial Calf** with show potential, 12 months and under

Kindly sponsored by: South Western Limousin Cattle Breeders' Club



**Class 6:** **Pedigree or Limousin cross female**, any age (FOR SALE ONLY)

**Sale Time** - 12 Noon

**Judging Time** - 11 AM

**Judge** – Kate Lanfear

**Steward** – Geoff Hollow

**Show Awards:**

**Classes 1 to 5**

**First Prize:** £25

**Second Prize:** £15

**Third Prize:** £10

**Male Champion** – Best male BLCS rosette

**Female Champion** – Best female BLCS rosette

**Supreme Champion** will be awarded a perpetual trophy £100 cash prize plus sash and a champion rosette

Kindly sponsored by: **tamarmilling**

**Reserve Champion** will be awarded £50 cash prize plus a reserve champion rosette

Kindly sponsored by: **HAMBLYS**  
*Serving Southwest Farmers*

~ **The South Western Limousin Cattle Breeders' Club**  
would like to thank all our sponsors ~

## CLASS I

**Pedigree Bull** should be aged 14 – 30 months and halterbroken, sold in age order. This class will be split based on age on the sale day.

**Lot Arthur Stanbury**

**01 ARTHURS MAGIC**

**Born 06/01/2016**

**SVO16-0111**

**UK 380647/500111**

Got by AI

Natural Calf

Myostatin: no result

Gen. Colour: no result

Polled: no result

gs. EMSLIES COLOSSUS EEF07-029

ggs. OBJAT 19-30-299-413

**Sire EMSLIES GALILEO EEF11-059**

ggd. BALLYMONEY NOISETTE IETQVB0043F

gd. EMSLIES CATRIN EEF07-056

ggs. SAPHIR 36-15-082-247

ggd. MILLBROOK U479 IE281084540479

gs. GRAHAMS UNBEATABLE GV03-176

ggs. GRAHAMS PONCHO GV99-046

**Dam ARTHURS IRRESISTIBLE SVO13-0041**

ggd. HABITUDE 23-92-013-639

gd. GRAHAMS ANTHEA GV05-373

ggs. RODEO 23-51-224-606

ggd. PERGOLA 23-00-240-805

***Vendors Notes:** A very quiet bull with strong breeding on both sides with particular attention given to docility and calving ease. He had a very successful 2016 in show rings across the UK gaining many awards to include male champion and then going on to take the junior interbreed title at the Royal Bath and West. He has been running with heifers this winter so stands before you in his working clothes.*

**Lot**      **Mr M A & Mrs D Luxton**

**02**      **JOSH MAXIMUS**

**Born 06/02/2016**

**LHN16-282**

**UK 382421/200282**

Natural Calf

Myostatin: no result

Gen. Colour: no result

Polled: no result

gs. HALTCLIFFE ANZAC RP05-051

ggs. SYMPA 48-01-006-969

**Sire LOOSEBEARE DOCKER QA08-062**

ggd. ROMANCE 87-00-840-357

gd. LOOSEBEARE UREKA QA03-036

ggs. EXMOOR PROSPER WIV99-003

ggd. LOOSEBEARE NARISSA QA97-044

gs. KILLERTON TRAVIS GEA02-020

ggs. KILLERTON PADDY GEA99-008

**Dam JOSH DREAMER LHN08-001**

ggd. KILLERTON NARNIA GEA97-016

gd. VALMAR PEPSI VX99-001

ggs. BROADMEADOWS TOMBOLA  
CAVT-011

ggd. NEALFORD LENA NAD95-123

*Vendors Notes: All tested for BVD, Johnes, IBR & Lepto and all free.*

**Lot 03**      **Mr J H Neale & Son**  
**NEALFORD MESSI**

**Born 19/03/2016**

**NAD16-1050**

**UK 382334/601050**

Natural Calf

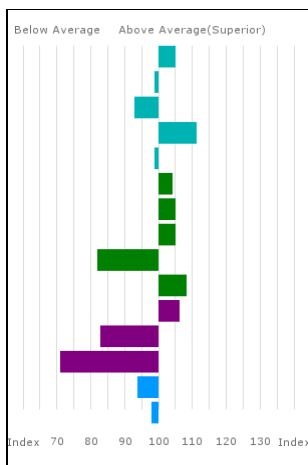
Myostatin: no result      Gen. Colour: no result      Polled: no result

gs. HALTCLIFFE VERMOUNT RP04-042      ggs. PENYRHEOL SAM PCU01-216  
**Sire PROCTERS CAVALIER PFD07-251**      ggd. RENONCULE 19-30-708-827

gd. PROCTERS PRUNELLA PFD99-035      ggs. DAIM 19-88-005-833  
 ggd. MARNHULL ISOBELLA MES93-071

gs. WILODGE CERBERUS WEY07-010      ggs. WILODGE TONKA WEY02-002  
**Dam EXMOOR FLAME WIV10-003**      ggd. WILODGE PRICELESS WEY99-032

gd. EXMOOR AMBER WIV05-011      ggs. SYMPA 48-01-006-969  
 ggd. EXMOOR URSINIA WIV03-005



Trait	EBV	Acc %
Gest. Length (days)	-0.4	64
Birth Weight (kg)	2.0	73
Calving Ease (%)	-3.6	62
Mat. Calv. Ease (%)	0.7	49
CALVING VALUE	0	65
200 Day Growth (kg)	29	73
400 Day Growth (kg)	55	71
Muscle Depth (mm)	3.8	61
Fat Depth (mm)	-0.4	55
BEEF VALUE	32	73
200 Day Milk (kg)	0	52
Age at 1st Calv. EBV (days)	34	50
Calving Interval EBV (days)	9	35
Scrotal Circ (cm)	0.1	62
Docility (%)	2.7	55

Adjusted	Wts(kg)
100	173
200	318
300	463
400	0
500	0
Scanned	NO

*Vendors Notes: Johnes Level 4, BVD & Lepto vaccinated.*

**Lot**      **Mr M A & Mrs D Luxton**

**04**      **JOSH MAVERICK**

**Born 06/04/2016**

**LHN16-286**

**UK 382421/600286**

Natural Calf

Myostatin: no result

Gen. Colour: no result

Polled: no result

gs. HALTCLIFFE ANZAC RP05-051

ggs. SYMPA 48-01-006-969

**Sire LOOSEBEARE DOCKER QA08-062**

ggd. ROMANCE 87-00-840-357

gd. LOOSEBEARE UREKA QA03-036

ggs. EXMOOR PROSPER WIV99-003

ggd. LOOSEBEARE NARISSA QA97-044

gs. ROSECROFT BRUNO WFD06-075

ggs. GRAHAMS UNBEATABLE GV03-176

**Dam REDGATE FOXYLADY MJJ10-025**

ggd. RAHONEY STARLIGHT MDS01-014

gd. REDGATE VIXEN MJJ04-007

ggs. RONICK HAWK DY92-026

ggd. QUAISH ODYSSEY HFF98-019

*Vendors Notes: All tested for BVD, Johnes, IBR & Lepto and all free.*



Lot  
05

Mr & Mrs P W & S M Greed

KILLERTON MANYA

Born 02/05/2016

GEA16-2411

UK 366351/602411

Natural Calf

Myostatin: no result

Gen. Colour: no result

Polled: no result

gs. HALTCLIFFE ANZAC RP05-051  
Sire LOOSEBEARE EXMOOR QA09-009

ggs. SYMPA 48-01-006-969  
ggd. ROMANCE 87-00-840-357

gd. LOOSEBEARE BLOSSUM QA06-020

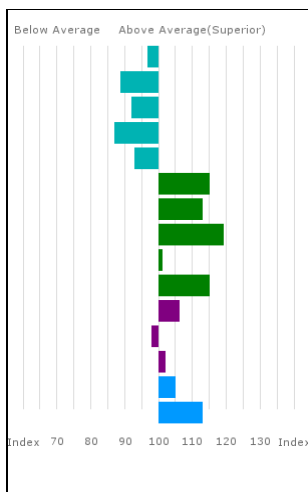
ggs. SARKLEY UNRIVALLED PBO03-088  
ggd. LOOSEBEARE SACHA QA01-014

gs. KILLERTON PADDY GEA99-008  
Dam KILLERTON TANYA GEA02-024

ggs. HORTENSIA 56-92-060-816  
ggd. LERRYN ENDIVE MCPE-002

gd. KILLERTON NANETTE GEA97-004

ggs. DAIM 19-88-005-833  
ggd. RIVERMEAD JULIET DCY94-009



Trait	EBV	Acc %
Gest. Length (days)	0.5	48
Birth Weight (kg)	2.8	61
Calving Ease (%)	-3.7	57
Mat.Calv. Ease (%)	-0.6	48
CALVING VALUE	-1	53
200 Day Growth (kg)	38	76
400 Day Growth (kg)	67	78
Muscle Depth (mm)	5.7	64
Fat Depth (mm)	-0.1	53
BEEF VALUE	38	75
200 Day Milk (kg)	0	57
Age at 1st Calv. EBV (days)	19	50
Calving Interval EBV (days)	-1	36
Scrotal Circ (cm)	0.4	64
Docility (%)	4.7	47

Adjusted Wts(kg)	
100	185
200	335
300	497
400	657
500	819
Scanned	NO

**Lot  
06**

**Messrs E W Quick & Sons**

**LOOSEBEARE MATA**

**Born 31/05/2016**

**QA16-1761**

**UK 361282/201761**

Got by AI

Natural Calf

Myostatin: no result

Gen. Colour: no result

Polled: no result

gs. SAPHIR 36-15-082-247  
**Sire LODGE HAMLET CBM12-346**

ggs. JACOT 36-94-005-555  
ggd. ISSUE 36-93-003-460

gd. LODGE VIOLET CBM04-114

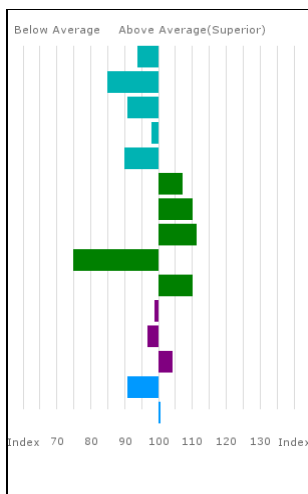
ggs. BROADMEADOWS CANNON CAVC-031  
ggd. MIDDLEDALE TANGERINE BDD02-031

gs. HALTCLIFFE ANZAC RP05-051  
**Dam LOOSEBEARE GWYNETH QA11-063**

ggs. SYMPA 48-01-006-969  
ggd. ROMANCE 87-00-840-357

gd. LOOSEBEARE CRACKER QA07-040

ggs. RAINBOW SIMON WIM01-013  
ggd. LOOSEBEARE SACHA QA01-014



Trait	EBV	Acc %
Gest. Length (days)	0.9	74
Birth Weight (kg)	3.1	72
Calving Ease (%)	-3.9	65
Mat. Calv. Ease (%)	0.0	57
CALVING VALUE	-1	73
200 Day Growth (kg)	31	75
400 Day Growth (kg)	62	76
Muscle Depth (mm)	4.6	62
Fat Depth (mm)	-0.5	52
BEEF VALUE	34	75
200 Day Milk (kg)	-1	52
Age at 1st Calv. EBV (days)	20	45
Calving Interval EBV (days)	-2	31
Scrotal Circ (cm)	0.0	63
Docility (%)	2.9	74

Adjusted	Wts(kg)
100	175
200	305
300	496
400	651
500	857
Scanned	NO

**Vendors Notes:** *Johnes Risk Level 3, BVD Accredited.* Sired by the easy calving genus bull Lodge Hamlet his dams a great breeding cow who's last bull sold last February for 5400gns.

**Lot 07**      **Mr L J & Mrs J M Bradford**  
**HIGHERPARK MAJOR**

**Born 11/06/2016**      **BXB16-0188**      **UK 372634/100188**

Natural Calf

Myostatin: no result      Gen. Colour: no result      Polled: no result

gs. PROCTERS CAVALIER PFD07-251      ggs. HALTCLIFFE VERMOUNT RP04-042  
**Sire NEALFORD JUDGE NAD14-0842**      ggd. PROCTERS PRUNELLA PFD99-035

gd. NEALFORD FREDA NAD10-878      ggs. WILODGE VANTASTIC WEY04-037  
ggd. NEALFORD CALICE NAD07-701

gs. UTHA 29-15-098-687      ggs. INTERIM 87-93-004-842  
**Dam STOURHEAD GENTLE PDC11-482**      ggd. SABRINA 29-15-098-518

gd. STOURHEAD JAVA PDC94-041      ggs. BEACHAMPTON DESSUS FDD-022  
ggd. STOURHEAD GENTLE PDCG-014-FOT

**Lot 08**      **Mr L J & Mrs J M Bradford**  
**HIGHERPARK MERLIN**

**Born 14/06/2016**      **BXB16-0189**      **UK 372634/200189**

Natural Calf

Myostatin: no result      Gen. Colour: no result      Polled: no result

gs. PROCTERS CAVALIER PFD07-251      ggs. HALTCLIFFE VERMOUNT RP04-042  
**Sire NEALFORD JUDGE NAD14-0842**      ggd. PROCTERS PRUNELLA PFD99-035

gd. NEALFORD FREDA NAD10-878      ggs. WILODGE VANTASTIC WEY04-037  
ggd. NEALFORD CALICE NAD07-701

gs. AGHADOLGAN EMPEROR SLC09-017      ggs. SYMPA 48-01-006-969  
**Dam LOOSEBEARE INCYWENCY QA13-1392**      ggd. BRONTEMOOR BOBBYDAZZLER  
PCI06-049

gd. LOOSEBEARE VENICE QA04-035      ggs. EXMOOR PROSPER WIV99-003  
ggd. LOOSEBEARE HRH QA92-022

**Lot 09 John & Mabel Garthwaite  
KAPRICO MERLIN**

**Born 18/06/2016 SHJ16-0098 UK 106173/700098**

*Bred by Mrs C Stafford, 10 Sancroft Drive, Houghton le Spring,  
Sunderland, DH5 8NE*

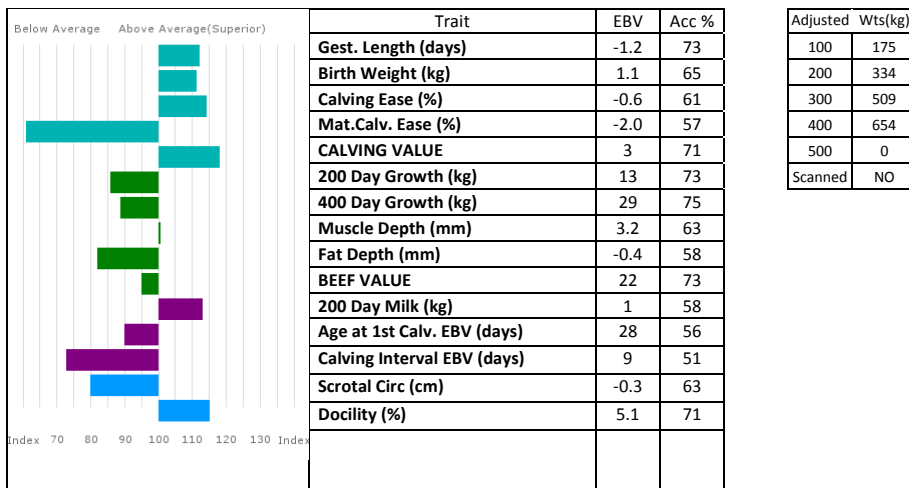
Got by AI Natural Calf  
Myostatin: no result Gen. Colour: no result Polled: no result

gs. BROADMEADOWS CANNON CAVC-031 ggs. BROADMEADOWS VIP CAVV-024-FOT  
Sire **RONICK HAWK DY92-026** gg. BROADMEADOWS AINSI CAVA-003

gd. RONICK ESTHER DYE-040 ggs. TALENT 23-82-004-036  
ggd. ORCHARD VANILLA WAEV-019

gs. IONESCO 36-93-000-206 ggs. BAMBINO 87-86-001-669  
Dam **KAPRICO JUNIPER SHJ14-0089** gg. COQUETTE 36-87-001-802

gd. KAPRICO ELDERBERRY SHJ09-006 ggs. SYMPA 48-01-006-969  
ggd. KAPRICO BRAMBLE SHJ06-003



**Vendors Notes:** *Johnes Risk Level 1. Kaprico Merlin was bought along with his mother last year. He has a fantastic temperament and is very easy fleshing. His EBVs show to be easy calving making him suitable for use on heifers. Kaprico Merlins pedigree contains some fantastic animals such as Broadmeadows Ainsy, Broadmeadows Cannon and Ronick Hawk.*

**Lot  
10**

**Mr M T Jones**

**BAILEA MANUNITED**

**Born 12/08/2016**

**JAG16-2676**

**UK 720297/202676**

Natural Calf

Myostatin: no result

Gen. Colour: no result

Polled: no result

gs. REQUIN 36-15-031-134

**Sire BAILEA HOLLYOAKS JAG12-064**

ggs. JACOT 36-94-005-555

ggd. MARIOLLE 36-96-011-412

gd. BAILEA MAUD JAG96-056

ggs. GREENSONS GIGOLO GATG-009

ggd. BAILEA FAY JAGF-010

gs. PERIGORD 12-99-076-328

**Dam BAILEA ARIA JAG05-124**

ggs. JANVIER 86-94-111-257

ggd. LAGUNE 12-95-160-132

gd. BAILEA NELLY JAG97-005

ggs. GREENSONS GIGOLO GATG-009

ggd. LEDBURY SUE RZS-001

*Vendors Notes:* SAC Health Scheme, level 4.

**Lot 11**      **Mr M T Jones**  
**BAILEA MERRYGOROUND**  
**Born 17/08/2016**      **JAG16-2683**      **UK 720297/202683**  
Natural Calf  
Myostatin: no result      Gen. Colour: no result      Polled: no result

gs. REQUIN 36-15-031-134      ggs. JACOT 36-94-005-555  
**Sire BAILEA HOLLYOAKS JAG12-064**      ggd. MARIOLLE 36-96-011-412

gd. BAILEA MAUD JAG96-056      ggs. GREENSONS GIGOLO GATG-009  
ggd. BAILEA FAY JAGF-010

gs. DRAGUEUR 86-08-328-133      ggs. VERDI 86-04-144-908  
**Dam BAILEA HOTPANTS JAG12-015**      ggd. ROSALINE 86-00-130-512

gd. BAILEA SUNFLOWER JAG01-094      ggs. MARRON 36-96-018-225  
ggd. MELYS FREDA FASF-012

*Vendors Notes:* SAC Health Scheme, level 4.

Lot  
12

Mr & Mrs P W & S M Greed

KILLERTON MIGHTY

Born 18/08/2016

GEA16-2460

UK 366351/602460

Natural Calf

Myostatin: no result

Gen. Colour: no result

Polled: no result

gs. HALTCLIFFE ANZAC RP05-051  
Sire LOOSEBEARE EXMOOR QA09-009

ggs. SYMPA 48-01-006-969  
ggd. ROMANCE 87-00-840-357

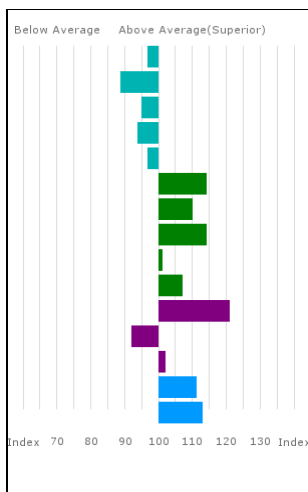
gd. LOOSEBEARE BLOSSUM QA06-020 ggs. SARKLEY UNRIVALLED PBO03-088  
ggd. LOOSEBEARE SACHA QA01-014

gs. KILLERTON PADDY GEA99-008  
Dam KILLERTON FLINDERS GEA10-002

ggs. HORTENSIA 56-92-060-816  
ggd. LERRYN ENDIVE MCPE-002

gd. KILLERTON BRONNI GEA06-009

ggs. LOWABBEY UNITED HBC03-003  
ggd. KILLERTON OZZY GEA98-040



Trait	EBV	Acc %
Gest. Length (days)	0.5	44
Birth Weight (kg)	2.8	57
Calving Ease (%)	-3.3	54
Mat. Calv. Ease (%)	-0.2	46
CALVING VALUE	0	49
200 Day Growth (kg)	37	75
400 Day Growth (kg)	62	77
Muscle Depth (mm)	5.0	62
Fat Depth (mm)	-0.1	52
BEEF VALUE	31	74
200 Day Milk (kg)	2	54
Age at 1st Calv. EBV (days)	25	50
Calving Interval EBV (days)	-1	36
Scrotal Circ (cm)	0.6	63
Docility (%)	4.8	46

Adjusted Wts(kg)	
100	204
200	364
300	523
400	679
500	833
Scanned	NO



**Lot GN & LV Dunn**

**13 HIGHRIDGE MIGHTY**

**Born 19/09/2016**

**DNS16-0546**

**UK 373278/200546**

Natural Calf

Myostatin: no result

Gen. Colour: no result

Polled: no result

gs. GARYVAUGHAN CHAMPION LFP07-235 ggs. LOOSEBEARE VOYAGER QA04-062

**Sire GARYVAUGHAN FLASH LFP10-485**

ggd. RONICK UNFAIR DY03-531

gd. ASHLEDGE BLUEBELL KY06-597

ggs. ASHLEDGE SMIRNOFF KY01-105

ggd. ASHLEDGE PRIMROSE KY99-536

gs. NORMAN ASHLEY NBB05-040

**Dam HIGHRIDGE FIZZ DNS10-048**

ggs. HEATHMOUNT TROJAN MOF02-032

ggd. STACEY SHEILA WEW01-006

gd. KILLERTON ASTER GEA05-034

ggs. BOWERS UNION JZ03-035

ggd. KILLERTON TESTA GEA02-035

*Vendors Notes: Johnes Level 2, Bio best – routinely vaccinated BVD & Lepto.*

**Lot Messrs E W Quick & Sons**

**14 LOOSEBEARE MRBUMP**

**Born 20/09/2016**

**QA16-1793**

**UK 361282/601793**

Natural Calf

Myostatin: no result

Gen. Colour: no result

Polled: no result

gs. SYMPA 48-01-006-969

ggs. OCTOPUS 87-10-671-030

**Sire AGHADOLGAN EMPEROR SLC09-017**

ggd. OPERETTE 48-98-133-040

gd. BRONTEMOOR BOBBYDAZZLER PCI06-049

ggs. SEAVIEW UPSTART MMV03-033

ggd. BRONTEMOOR LISA PCI95-021

gs. LOOSEBEARE UNCLERYAN QA03-087

ggs. LISCON STILES MOC01-003

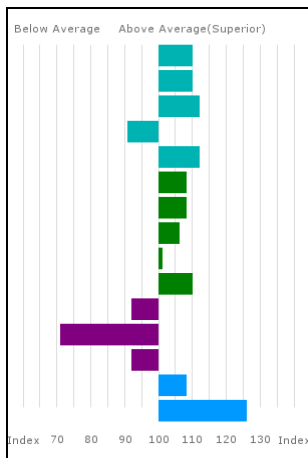
**Dam LOOSEBEARE CANNA QA07-072**

ggd. LOOSEBEARE PUSSY QA99-049

gd. LOOSEBEARE UANNA QA03-022

ggs. QUAISH JACKTHELAD HFF94-008

ggd. SOFTLAW ANNA RACA-015



Trait	EBV	Acc %
<b>Gest. Length (days)</b>	-1.0	72
<b>Birth Weight (kg)</b>	1.2	70
<b>Calving Ease (%)</b>	-0.9	62
<b>Mat. Calv. Ease (%)</b>	-0.4	51
<b>CALVING VALUE</b>	2	71
<b>200 Day Growth (kg)</b>	32	75
<b>400 Day Growth (kg)</b>	59	76
<b>Muscle Depth (mm)</b>	4.0	61
<b>Fat Depth (mm)</b>	-0.1	44
<b>BEEF VALUE</b>	34	75
<b>200 Day Milk (kg)</b>	-2	51
<b>Age at 1st Calv. EBV (days)</b>	47	48
<b>Calving Interval EBV (days)</b>	2	29
<b>Scrotal Circ (cm)</b>	0.5	62
<b>Docility (%)</b>	6.5	72

Adjusted	Wts(kg)
100	183
200	335
300	509
400	672
500	0
Scanned	NO

**Vendors Notes:** *Johnes Risk Level 3, BVD Accredited.* Sired by the same bull as last years Holsworthy sale champion, very easy calving line and his dam has bred bulls up to £4500.

**Lot**      **Messrs E W Quick & Sons**

**15**      **LOOSEBEARE MIKE**

**Born 22/10/2016**

**QA16-1802**

**UK 361282/101802**

Natural Calf

Myostatin: no result

Gen. Colour: no result

Polled: no result

gs. WILODGE VANTASTIC WEY04-037  
**Sire LOOSEBEARE FANTASTIC QA10-074**

ggs. WILODGE TONKA WEY02-002  
ggd. RAVENELLE 23-51-224-583

gd. LOOSEBEARE SACHA QA01-014

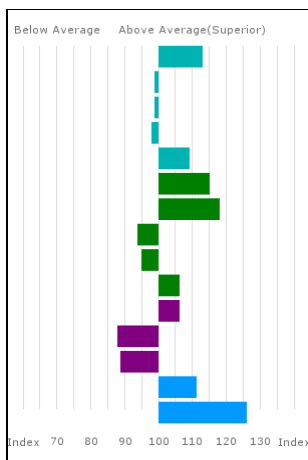
ggs. BROADMEADOWS CANNON CAVC-031  
ggd. LOOSEBEARE NEAUTY QA97-017

gs. RAINBOW SIMON WIM01-013  
**Dam LOOSEBEARE DATTY QA08-078**

ggs. GLENROCK ONSLOW IE98-445  
ggd. ROMBALDS NAN RCE97-061

gd. LOOSEBEARE PATTY QA99-045

ggs. GREENWELL MANAGER NK96-012  
ggd. LOOSEBEARE LILAC QA95-036



Trait	EBV	Acc %
Gest. Length (days)	-1.3	75
Birth Weight (kg)	2.0	72
Calving Ease (%)	-2.8	65
Mat.Calv. Ease (%)	0.0	55
CALVING VALUE	2	73
200 Day Growth (kg)	38	75
400 Day Growth (kg)	75	77
Muscle Depth (mm)	2.3	63
Fat Depth (mm)	-0.2	54
BEEF VALUE	31	75
200 Day Milk (kg)	0	56
Age at 1st Calv. EBV (days)	30	52
Calving Interval EBV (days)	3	36
Scrotal Circ (cm)	0.6	63
Docility (%)	6.6	72

Adjusted Wts(kg)	
100	185
200	338
300	511
400	680
500	845
Scanned	NO

**Vendors Notes:** *Johnes Risk Level 3, BVD Accredited.* Super bull sired by Fantastic who sired the champion and top price at Holsworthy show and sale 2016.

**Lot 16 GN & LV Dunn  
HIGHRIDGE MITCH**

**Born 22/10/2016**

**DNS16-0556**

**UK 373278/500556**

Natural Calf

Myostatin: no result

Gen. Colour: no result

Polled: no result

gs. GARYVAUGHAN CHAMPION LFP07-235

ggs. LOOSEBEARE VOYAGER QA04-062

**Sire GARYVAUGHAN FLASH LFP10-485**

ggd. RONICK UNFAIR DY03-531

gd. ASHLEDGE BLUEBELL KY06-597

ggs. ASHLEDGE SMIRNOFF KY01-105

ggd. ASHLEDGE PRIMROSE KY99-536

gs. BOWERS UNION JZ03-035

ggs. RONICK HAWK DY92-026

**Dam KILLERTON ADIO GEA05-049**

ggd. BOWERS RITA JZ00-007

gd. KILLERTON RADIO GEA00-035

ggs. AMI 23-85-055-690

ggd. KILLERTON ONE GEA98-001

*Vendors Notes: Johnes Level 2, Bio best – routinely vaccinated BVD & Lepto.*

**Lot 17 Mr J H Neale & Son  
NEALFORD MONKEYTRICKS**

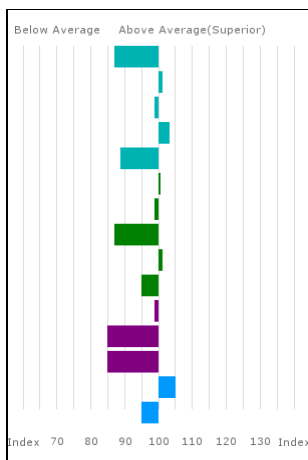
**Born 22/10/2016 NAD16-1119 UK 382334/501119**  
 Natural Calf  
 Myostatin: no result Gen. Colour: no result Polled: no result

gs. AMPERTAINE ELGIN MGD09-039 Sire **AMPERTAINE INFERNO MGD13-9052** ggs. GLENROCK VENTURA IE04-432  
 ggd. AMPERTAINE CARLA MGD07-036

gd. KYPE TIFFANY CAQ02-030 ggs. CLOUGHHEAD LORD HCX95-142  
 ggd. KYPE MIAMI CAQ96-009

gs. TUNNELBY UGOLIMO TAP03-028 Dam **TIMBERLANDS CRAPEMYRTLE PGW07-070** ggs. RYEDAILE NAPOLEON DAC97-159  
 ggd. TUNNELBY PANCAKE TAP99-004

gd. INVICTA TANSY WKQ02-002 ggs. FENROSE ORLY EAM98-104  
 ggd. WHEATSHEAF NAOMI SFP97-001



Trait	EBV	Acc %
Gest. Length (days)	1.8	49
Birth Weight (kg)	1.9	53
Calving Ease (%)	-2.7	48
Mat.Calv. Ease (%)	0.3	36
CALVING VALUE	-1	49
200 Day Growth (kg)	25	66
400 Day Growth (kg)	46	64
Muscle Depth (mm)	1.4	49
Fat Depth (mm)	-0.1	38
BEEF VALUE	22	64
200 Day Milk (kg)	-1	34
Age at 1st Calv. EBV (days)	33	29
Calving Interval EBV (days)	5	18
Scrotal Circ (cm)	0.4	52
Docility (%)	2.3	37

Adjusted Wts(kg)	
100	179
200	311
300	499
400	0
500	0
Scanned	NO

*Vendors Notes: Johnes Level 4, BVD & Lepto vaccinated.*

**Lot 18 Mr & Mrs P W & S M Greed  
KILLERTON MELLOW**

**Born 26/11/2016**

**GEA16-2492**

**UK 366351/302492**

Natural Calf

Myostatin: no result

Gen. Colour: no result

Polled: no result

gs. HARTLAW EXCALIBER MUE09-378  
**Sire GOLDIES JEFF GS14-1425**

ggs. WILODGE TONKA WEY02-002  
ggd. HARTLAW BLUEBERRY MUE06-235

gd. GOLDIES ABIGAIL GS05-650

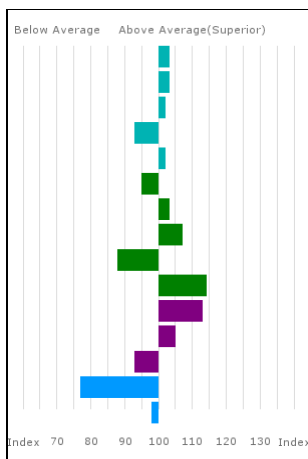
ggs. GOLDIES TERENCE GS02-489  
ggd. RONICK ISABELLE DY93-033

gs. KAPRICO DONATO SHJ08-006  
**Dam KILLERTON GELLEN GEA11-099**

ggs. AMPERTAINE ABRACADABRA MGD05-014  
ggd. KAPRICO ULTIMATE SHJ03-005

gd. KILLERTON ELLEN GEA09-025

ggs. HAFODLAS AURON REM05-211  
ggd. KILLERTON URIELLE GEA03-032



Trait	EBV	Acc %
<b>Gest. Length (days)</b>	-0.2	45
<b>Birth Weight (kg)</b>	1.7	52
<b>Calving Ease (%)</b>	-2.4	53
<b>Mat. Calv. Ease (%)</b>	-0.3	37
<b>CALVING VALUE</b>	1	48
<b>200 Day Growth (kg)</b>	21	72
<b>400 Day Growth (kg)</b>	52	74
<b>Muscle Depth (mm)</b>	4.1	56
<b>Fat Depth (mm)</b>	-0.3	44
<b>BEEF VALUE</b>	37	71
<b>200 Day Milk (kg)</b>	1	41
<b>Age at 1st Calv. EBV (days)</b>	13	38
<b>Calving Interval EBV (days)</b>	2	25
<b>Scrotal Circ (cm)</b>	-0.4	56
<b>Docility (%)</b>	2.7	45

Adjusted Wts(kg)	
100	165
200	295
300	460
400	667
500	0
Scanned	NO

**Lot 19 Mr & Mrs P W & S M Greed  
KILLERTON NORTHSTAR**

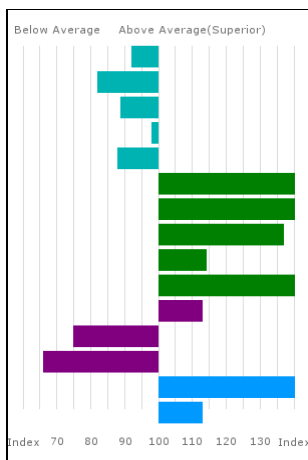
**Born 01/01/2017 GEA17-2497 UK 366351/102497**  
 Natural Calf  
 Myostatin: no result Gen. Colour: no result Polled: no result

gs. EMSLIES COLOSSUS EEF07-029 ggs. OBJAT 19-30-299-413  
**Sire EMSLIES HORNLY EEF12-008** ggd. BALLYMONEY NOISETTE IETQVB0043F

gd. EMSLIES EROTIC EEF09-031 ggs. HARTSIDEANEW ARGOS TGH05-352  
 ggd. HEATHLANDS SWEETHEART CED01-003

gs. LOWABBEY UNITED HBC03-003 ggs. GRAHAMS RAMROD GV00-077  
**Dam KILLERTON EUCALYPTUS GEA09-050** ggd. LOWABBEY RAINBOW HBC00-038

gd. KILLERTON THYME GEA02-046 ggs. GRANGE NAWAZ SAD97-100  
 ggd. LERRYIN HAZLENUT MCP92-002



Trait	EBV	Acc %
Gest. Length (days)	1.2	47
Birth Weight (kg)	3.4	58
Calving Ease (%)	-4.2	59
Mat.Calv. Ease (%)	0.0	46
CALVING VALUE	-1	52
200 Day Growth (kg)	63	75
400 Day Growth (kg)	115	76
Muscle Depth (mm)	8.1	61
Fat Depth (mm)	0.1	48
BEEF VALUE	60	73
200 Day Milk (kg)	1	47
Age at 1st Calv. EBV (days)	43	41
Calving Interval EBV (days)	11	25
Scrotal Circ (cm)	1.6	62
Docility (%)	4.8	46

Adjusted Wts(kg)	
100	237
200	437
300	637
400	837
500	0
Scanned	NO

**Lot  
20**

**Mr & Mrs M Alford  
FOXHILLFARM NUCLEAR**

**Born 03/01/2017**

**AGX17-153**

**UK 374401/200104**

Got by AI

Embryo Calf

Myostatin: no result

Gen. Colour: no result

Polled: no result

gs. AMPERTAINE COMMANDER  
MGD07-046

ggs. GLENROCK VENTURA IE04-432

**Sire AMPERTAINE GIGOLO MGD11-051**

ggd. AMPERTAINE ANNABELLA MGD05-015

gd. AMPERTAINE CRYSTAL MGD07-016

ggs. RONICK GAINS DYG-010

ggd. KYPE ULTRA CAQ03-046

gs. WILODGE VANTASTIC WEY04-037

ggs. WILODGE TONKA WEY02-002

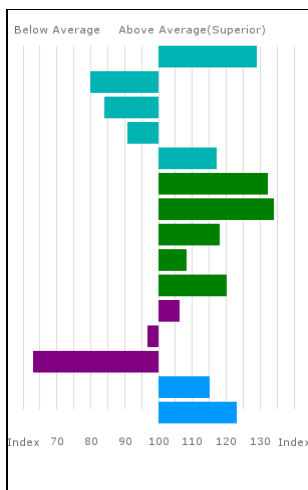
**Dam BANKDALE ELIZABETH WLJ09-295**

ggd. RAVENELLE 23-51-224-583

gd. BANKDALE ALICE WLJ05-091

ggs. SYMPA 48-01-006-969

ggd. PRINCESSE 87-08-920-187



Trait	EBV	Acc %
Gest. Length (days)	-3.2	79
Birth Weight (kg)	3.5	76
Calving Ease (%)	-4.8	68
Mat. Calv. Ease (%)	-0.4	59
CALVING VALUE	3	77
200 Day Growth (kg)	53	77
400 Day Growth (kg)	101	78
Muscle Depth (mm)	5.6	68
Fat Depth (mm)	0.0	61
BEEF VALUE	41	78
200 Day Milk (kg)	0	58
Age at 1st Calv. EBV (days)	21	40
Calving Interval EBV (days)	12	31
Scrotal Circ (cm)	0.7	68
Docility (%)	6.1	61

Adjusted Wts(kg)	
100	192
200	350
300	526
400	691
500	0
Scanned	NO

**Vendors Notes:** *Johnes Level 1, BVD accredited, in SAC scheme. Small calf born, very quiet bull easy to handle.*



**Lot  
21**

**Mr & Mrs M Alford**

**FOXHILLFARM NOTTINGHILL**

**Born 13/01/2017**

**AGX17-163**

**UK 374401/400113**

Got by AI

Embryo Calf

Myostatin: no result

Gen. Colour: no result

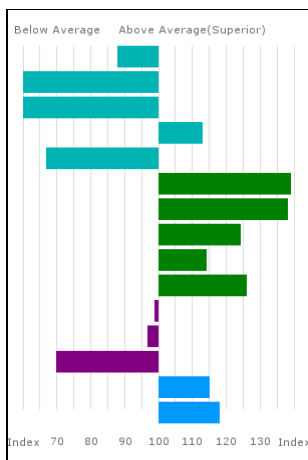
Polled: no result

gs. AMPERTAINE GIGOLO MGD11-051    ggs. AMPERTAINE COMMANDER MGD07-046  
**Sire TRUEMAN JAGGER SLN14-6436**    ggd. AMPERTAINE CRYSTAL MGD07-016

gd. TRUEMAN GRAZIA SLN11-006    ggs. HALTCLIFFE VERMOUNT RP04-042  
 ggd. COOKSTOWN B1425 IE281243471425

gs. WILODGE VANTASTIC WEY04-037    ggs. WILODGE TONKA WEY02-002  
**Dam FOXHILLFARM IOLA AGX13-024**    ggd. RAVENELLE 23-51-224-583

gd. BANKDALE ALICE WLJ05-091    ggs. SYMPA 48-01-006-969  
 ggd. PRINCESSE 87-08-920-187



Trait	EBV	Acc %
Gest. Length (days)	1.6	77
Birth Weight (kg)	5.6	73
Calving Ease (%)	-12.7	63
Mat. Calv. Ease (%)	0.8	53
CALVING VALUE	-5	75
200 Day Growth (kg)	59	75
400 Day Growth (kg)	107	76
Muscle Depth (mm)	6.3	62
Fat Depth (mm)	0.1	50
BEEF VALUE	46	75
200 Day Milk (kg)	-1	50
Age at 1st Calv. EBV (days)	20	35
Calving Interval EBV (days)	10	28
Scrotal Circ (cm)	0.7	62
Docility (%)	5.4	57

Adjusted Wts(kg)	
100	213
200	391
300	552
400	722
500	0
Scanned	NO

**Vendors Notes:** *Johnes Level 1, BVD accredited, in SAC scheme. Small calf born, very quiet bull easy to handle.*

**Lot 22 Mr & Mrs M Alford  
FOXHILLFARM NODDY**

**Born 15/01/2017 AGX17-167 UK 374401/100117**  
 Got by AI Embryo Calf  
 Myostatin: no result Gen. Colour: no result Polled: no result

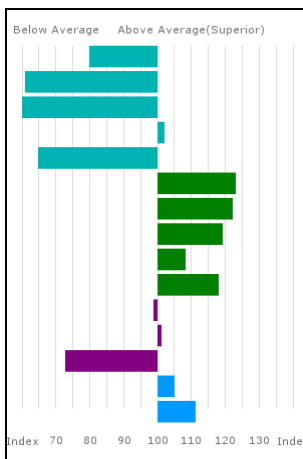
gs. AMPERTAINE GIGOLO MGD11-051 ggs. AMPERTAINE COMMANDER MGD07-046

**Sire TRUEMAN JAGGER SLN14-6436** ggd. AMPERTAINE CRYSTAL MGD07-016

gd. TRUEMAN GRAZIA SLN11-006 ggs. HALTCLIFFE VERMOUNT RP04-042  
 ggd. COOKSTOWN B1425 IE281243471425

gs. NEUF 22-97-004-114 ggs. CASSIS 40-88-028-055  
**Dam AMANDE 19-32-339-463** ggd. JUNGLE 22-94-004-270

gd. URCHIDEE 19-31-659-153 ggs. SCAPIN 23-51-383-257  
 ggd. ORCHIDEE 19-98-001-974



Trait	EBV	Acc %
Gest. Length (days)	2.6	75
Birth Weight (kg)	5.0	71
Calving Ease (%)	-9.7	59
Mat. Calv. Ease (%)	0.2	47
CALVING VALUE	-5	73
200 Day Growth (kg)	45	73
400 Day Growth (kg)	82	74
Muscle Depth (mm)	5.7	58
Fat Depth (mm)	0.0	45
BEEF VALUE	40	73
200 Day Milk (kg)	-1	45
Age at 1st Calv. EBV (days)	17	30
Calving Interval EBV (days)	9	23
Scrotal Circ (cm)	0.4	58
Docility (%)	4.5	50

Adjusted Wts(kg)	
100	204
200	370
300	512
400	667
500	0
Scanned	NO

**Vendors Notes:** *Johnes Level 1, BVD accredited, in SAC scheme. Small calf born, very quiet bull easy to handle.*

**SALE NOTES:**

**KIVELLS**

Established 1885

[www.kivells.com](http://www.kivells.com)

**South West Summer Sale of Pedigree  
Limousin Bulls & Females**

*Also incorporating Limousin sired/crossbred cattle*

**Friday 22 June 2018**

*Exeter Livestock Centre, Matford Park Road, Exeter, Devon, EX2 8FD*

*For further details please contact 01392 251261*

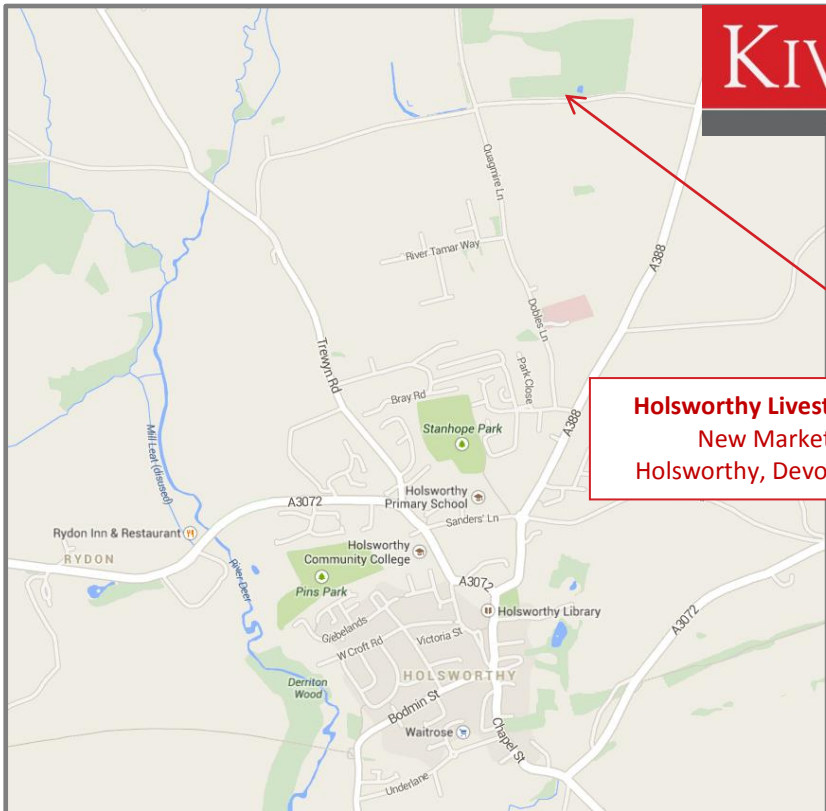


**British Limousin Cattle  
Society Breeders' Sales**

*On behalf of the Members of  
the South Western  
Limousin Breeders' Club*

# KIVELLS

[www.kivells.com](http://www.kivells.com)



**Holsworthy Livestock Market**  
New Market Road  
Holsworthy, Devon, EX22 7FA

