

LIMOUSIN

EARLY SPRING FEMALE SALE

Friday 14th February 2014



To be held at
Borderway Mart, Carlisle, Cumbria CA1 2RS

Farmers Guardian

Main Sponsors

The biggest classified section in the marketplace

Over 2,000 items advertised every week!

■ To Advertise call **0800 278 9928** or visit
farmersguardian.com/classified

On sale every Friday at your newsagent

PLEASE BRING THIS CATALOGUE TO THE SALE

'British Limousin Cattle Society Breeders' Sale Catalogue of

73

PEDIGREE LIMOUSIN CATTLE

*(held under BLCS Auction Rules and subject to the recommended
Conditions of Sale of the National Beef Association)*

includes consignments from

**BARRONS, EWDENVALE,
CLOUGHHEAD, GUNNERFLEET,
MAYBE (Production Sale),
MEADOWRIG, NORMANDE,
RINGWAY, TOWDYPOTTS Herds
plus many others**

Sale to commence at 5.00pm

to be held at Borderway Mart, Rosehill, Carlisle
(adjacent to J43 M6 Motorway)

Front Cover: Millbrow Elaine and her calf Millbrow Iona 9000gns



Auctioneers

HARRISON & HETHERINGTON

Farmstock Auctioneers, Brokers & Valuers

Head Office: Borderway Mart Rosehill Carlisle CA1 2RS

Telephone: 01228 406230 – Fax: 01228 406231

E-mail: info@borderway.com Website: www.harrisonandhetherington.co.uk

IMPORTANT NOTICE TO PROSPECTIVE PURCHASERS

SETTLEMENT & CLEARANCE OF STOCK

Please note that all lots must be settled
on the day of purchase

Completion of a buyers slip is essential for parties
who have not dealt with the company before

New customers and agents wishing to purchase on behalf
of another party must contact the companys main office
48 hours prior to a sale

No Lots can leave the market without a
'pass slip' being issued by the main office

Purchasers From Outside The United Kingdom

Invoices will be raised in pounds sterling.

We request that payment is made to us in pounds sterling
by cheque/bankers draft on the day of sale.

Card facilities are available (2% surcharge on credit cards)



HARRISON & HETHERINGTON

Farmstock Auctioneers, Brokers & Valuers

IMPORTANT NOTICE TO PROSPECTIVE PURCHASERS

ALL LOTS MUST BE SETTLED ON THE DAY OF PURCHASE

Parties who have not dealt with the company before should complete the undernoted form and hand it in to the auctioneers' clerk when a purchase is made.

Alternatively it can be sent to the main office in advance of the sale.

Please fold and detach along this perforation

SALE

DATE

TRADING NAME

PARTNERS NAMES (if applicable)

.....

.....

FULL POSTAL ADDRESS

.....

.....

.....

POSTCODE

TEL. NO.

H&H ACCOUNT No. (if known)

HOLDING NO.

HERD/FLOCK PREFIX

LOT NUMBER(s)

General Information & Sale Notes

LOCATION: The Sale will be held in the Borderway Mart, Carlisle Cumbria. Motorists should leave the M6 at Junction 43 and follow CARLISLE signs. The market is on the left hand side of the road within 1/4 mile of M6.

TIMETABLE OF EVENTS:

Thursday 13th February	Arrival of Stock	11am - 5pm
	Identification Check	2pm - 6pm
Friday 14th February	Sale	5pm

HOTELS: There are many hotels within the area, ranging from four star to excellent Bed and Breakfast accommodation, a list of which may be found on page 13 of the catalogue.

CONDITIONS OF SALE: The British Limousin Cattle Society have adopted the Auction Rules and Conditions of Sale drawn up by the N.B.A. This Sale is held subject to these rules and the Auctioneers' General Conditions of Sale, both available on request. In the event of any discrepancy between the two sets of conditions, the N.B.A. Conditions of Sale shall prevail.

INSURANCE: A representative of H & H Insurance Brokers, will be present at the sale and will be pleased to quote Purchasers for transit and other risks.

METHOD OF SALE: All cattle will be sold in guineas (105 pence) and strictly in catalogue order, unless any alteration is announced by the Auctioneers.

COMMISSIONS: The Auctioneers will dutifully execute commissions to purchase for buyers unable to attend the sale personally, upon receipt of written instructions.

REGISTRATIONS: All stock in the Sale are registered with the British Limousin Cattle Society, Avenue Q, National Agricultural Centre, Stoneleigh, Kenilworth, Warwickshire CV8 2RA (Tel. 02476 696500).

SEMEN ROYALTY SCHEME BULL REGISTER: Purchasers are asked to note that where a female is catalogued as being served/inseminated by a "Semen Royalty" Sire the appropriate royalty will be payable by the purchaser prior to registration of the calf.

PEDIGREE TRANSFERS: Official Pedigree Transfers will be effected by the Auctioneers and the British Limousin Cattle Society as soon as possible after the Sale. Full pedigrees will be transferred free of charge to all members.

SETTLEMENT AND CLEARANCE OF STOCK: Settlement in full is due immediately at the close of Sale. No animal may leave the Sale Premises without an official 'Pass Slip', obtainable only from the Auctioneers upon settlement.

THE BRITISH LIMOUSIN CATTLE SOCIETY

Chief Executive: Iain Kerr

Concorde House, 24 Warwick New Road, Leamington Spa,
Warwickshire CV32 5JG

Tel: 02476 696500

Fax: 02476 696716

IMPORTANT NOTICE TO PURCHASERS

1	This Sale is held subject to recommended Conditions of Sale of the National Beef Association.
2	This Sale is held subject to the Special Terms and Conditions of Sale recommended for Sales of Pedigree Beef Cattle by the National Beef Association. The preparation of these Terms and Conditions has proved a lengthy and costly process and, in order to defray the legal and other costs involved, and to provide a continuing source of revenue to assist the Association in its vital work for pedigree cattle breeders, The Committee of the NBA have agreed that the following levy to be charged between the vendor and purchaser as follows – Bull Warranty - £3 to the vendor and £3 to the purchaser, Female Warranty - £2 to the vendor and £2 to the purchaser, Each amount will be plus VAT and be charged to the relevant vendor and purchaser accounts.

BIO SECURITY RULES
HARRISON & HETHERINGTON LIMITED, BORDERWAY MART, CARLISLE
Notice to all Visitors and Traders

Please read and observe the following:

- Excessive dirty vehicles will not be allowed entry, therefore ensure vehicle is clean before arrival.
- All vehicles transporting livestock will be subject to a documentation check before entry to market site.
- All visitors and traders must ensure they wear clean clothing and footwear before entering market site.
- All visitors and traders using car park areas please use main entrance.
- Hauliers and farmers delivering livestock must disinfect their boots before and after loading or unloading.
- Livestock purchased or unsold will not be allowed to move unless an authorised "pass slip" has been issued by the main office.
- No livestock will be allowed to remain on the premises after a sale.
- Only staff, livestock hauliers, owners or their agents are permitted to load or unload livestock.
- Wash hands thoroughly when leaving pennage areas.
- Please observe our staff's instructions at all times.

Our on site Biosecurity Officer, Stuart Graham, will only be too pleased to give you assistance.



T: 01228 406200 www.harrisonandhetherington.co.uk



T: 01228 810799 www.hhking.co.uk



T: 01228 590990 www.hhmotorauctions.com



T: 01228 406260 T: 0191 370 8530
www.hhland.co.uk



T: 01228 595939 www.hhborderwayfinance.co.uk



T: 01228 406290 www.hhinsurancebrokers.co.uk



T: 01228 406320 www.hhauctionrooms.co.uk



T: 01768 864214 T: 01228 406343
www.hhreedsprinters.co.uk

A User's Guide to Estimated Breeding Values

Contents

1. Estimated Breeding Values (EBVs)
2. How are EBVs Calculated?
3. Breeding Indexes
4. Accuracy
5. EBV Indexes
6. 200 Day Milk
7. How to Use EBVs and Indexes
8. Understanding Sale Cards and Catalogues
9. EBVs and Pedigrees Just a Click Away
10. Further Information

1. Estimated Breeding Values

Many factors influence the appearance and performance of a bull, so selecting 'by eye' alone can be misleading. The only accurate way of assessing the genetic potential of an animal (i.e. what it can pass on to its calves) is by using Estimated Breeding Values (EBV's) and Indexes. These are produced by Signet using a system known as BLUP (Best Linear Unbiased Predictor) and are calculated from animals' individual performance records as well as those of all their known relatives, where the effects of the environment (feeding, management, disease, climate etc) are sifted out to leave an estimate of the genetic value for each trait, as follows...

EBV	What Does the EBV Indicate?	Look for...
Birth Weight (kg)	Genetic potential for calf weight at birth	High negative EBVs if you want low calf birth weights
Calving Ease (%)	Ease with which a bull's progeny will be born	High positive EBVs if you want less assisted calvings
Maternal Calving Ease (%)	Ease with which a bull's daughters will calve	High positive EBVs if you want less assisted calvings
Gestation Length (days)	Genetic potential for gestation length	High negative EBVs if you want short gestation lengths
200 Day Milk (kg)	The maternal component of 200 day growth (i.e. the contribution that the milking and maternal abilities of a bull's daughters make towards their calves' growth at 200 days of age)	High positive EBVs if you want daughters to wean heavier calves
200 Day Weight (kg)	Genetic potential for growth from birth to 200 days of age	High positive EBVs if you want high growth rates to weaning
400 Day Weight (kg)	Genetic potential for growth from birth to 400 days of age	High positive EBVs if you want high growth rates to finishing
Muscle Depth (mm)	Genetic potential for muscularity and potential to increase lean meat yield	High positive EBVs if you want good calf conformation
Fat Depth (mm)	Genetic potential for leaner carcasses	High negative EBVs if you want to produce leaner carcasses or take calves to heavier weights without penalty for fatness
Age at 1st Calving (%)	Genetic potential for early sexual maturity	High negative EBVs for a greater proportion of heifers that hold to 1 st service

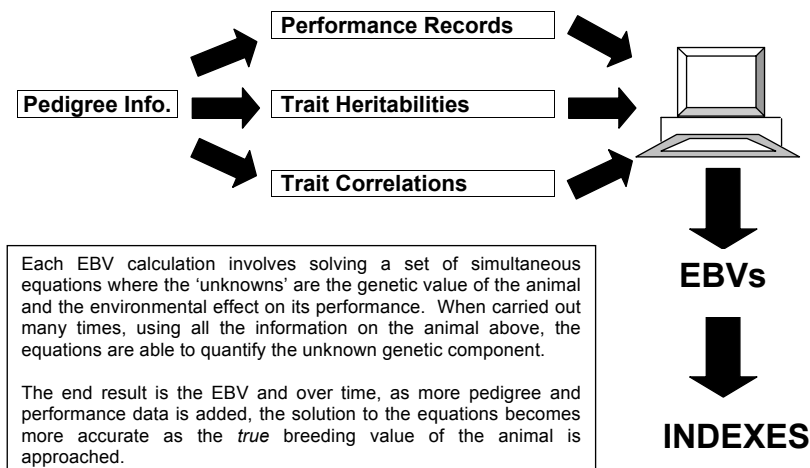
Longevity (years)	Genetic potential for long life in the breeding herd	High positive values for animals likely to remain in the herd for longer
Calving Interval (days)	Genetic potential for the time taken to get back in calf	High negative values to breed cows that get back in calf quickly
Dolicity (%)	Genetic potential for being calm when handled	High positive values for animals that are likely to be more calm when handled
Scrotal Circumference (cm)	Genetic potential for scrotal size. Linked to male serving capacity and puberty of daughters.	High positive values for animals with higher likely serving capacity and earlier maturing daughters.

2. HOW ARE EBVs CALCULATED?

EBVs are calculated using information from several sources:

- ☐ Measurements from the animal itself
- ☐ Measurements from the animal's herd mates (known as 'contemporaries' *)
- ☐ Measurements from the animal's relatives and their contemporaries
- ☐ The degree to which one trait influences another (known as a 'correlation' *)
- ☐ The degree to which each trait is passed on to the next generation (known as 'heritability' *)

* Terms explained below



Heritability and Correlations

Heritability

This is a term used to describe the strength with which traits are inherited and it varies depending on the trait in question. Generally:

- ☐ Traits associated with reproduction and survival have low heritabilities
- ☐ Milk production and early body size have medium heritabilities

- Later growth and carcass traits (i.e. fat and muscle) have relatively high heritabilities

Where traits with relatively good heritability are concerned, when something is known of the performance of one or both parents, then a prediction can be made as to how the offspring will perform and BLUP uses this 'knowledge' to enhance the accuracy of its EBV calculations.

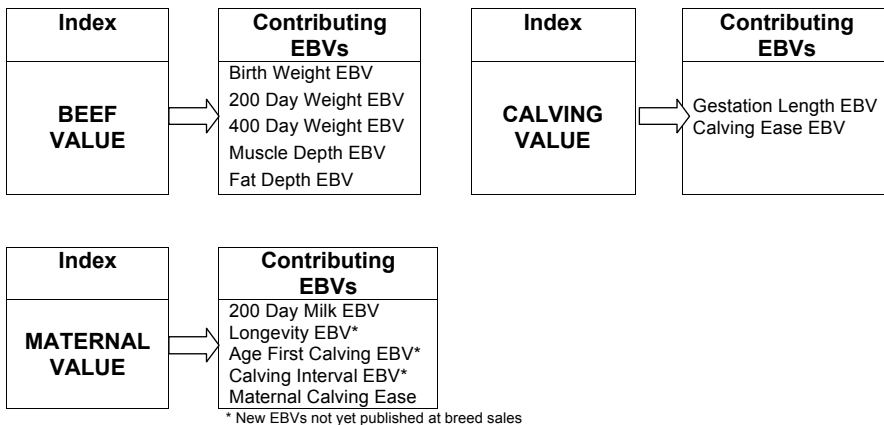
Correlations

This term describes the direction and strength of the association between two traits. For example, some traits are highly positively correlated, such as 200-Day Growth and 400-Day Growth, whilst others are highly negatively correlated, such as 400-Day Growth and Calving Ease. When something is known of one trait but perhaps not another, a prediction can be made based on what is known about the correlation between them. This again enhances the accuracy of the EBV in question and helps deal with situations where records for a trait are limited or unavailable.

3. BREEDING INDEXES

It is often desirable to select animals on the basis of more than one EBV. Indexes focus on specific breeding goals and combine the appropriate EBVs in to a single figure based on their relative economic value. This is widely regarded as the most efficient method of selecting on a number of traits at once.

Signet currently produces three beef Indexes, as follows:



When using an Index it is important that your breeding objective is broadly similar to that of the Index in question, otherwise you may unwittingly change aspects of your herd that you did not necessarily want to.

4. ACCURACY

An Accuracy Value is published next to every EBV and Index. Accuracy Values are expressed as a % and indicates the quantity and quality of records used to produce the EBV or Index.

Several things affect the accuracy of an EBV or Index, namely:

- The amount of information on the trait from the animal itself
- The amount of information on the trait from relatives of the animal

- The heritability of the trait concerned
- The amount of information from the animal and its relatives on traits correlated with the trait of interest and the strength of the correlations which vary between different traits.
- The number of herd mates from the same management group recorded ('contemporaries').

Scaling for Low Accuracy

An important feature of BLUP EBVs is that they are scaled to account for the amount of performance information on which they are based. EBVs based on very little information get adjusted towards the average EBV and this adjustment applies to both high and low EBVs.

This prevents animals gaining very high or very low EBVs as a result of a few very good or very poor records and is designed to protect the user from risk. The more information available on an animal and its relatives, the less the EBVs are adjusted.

Accuracy Values indicate how similar an animals' EBVs are to its true breeding value. They predict the likelihood that an animals EBVs will change over time

5. EBV INDEXES

To aid interpretation at breed sales, all Limousin EBVs are presented in index form based around an average of 100 with an approximate range of 70 to 130. For example:

	Calving Value	200 Day Milk (kg)	200 Day weight (kg)	400 Day weight (kg)	Muscle Depth (mm)	Fat Depth (mm)	Beef Value
EBV	LM -4C	-1	+25	+34	+3.40	-0.20	LM +23
Accuracy %	85	54	75	73	68	66	73
Index	77	98	112	106	111	111	108

Below average Above average

6. MATERNAL EBVs

Many commercial and pedigree producers are breeding their own female replacements and need to identify bulls with superior maternal attributes.

200 Day Milk EBV

One of the most important maternal EBVs is the 200 Day Milk EBV – indicating the degree to which 200 day milk is influenced by maternal performance – e.g. milkiness and general mothering ability.

As well as predicting breeding potential for growth to 200 day of age, the 200 day weight can be used to assess an animals breeding potential for milking ability.

Consider the performance of the grand-offspring of a bull. The weights of all of his grandprogeny are influenced by his growth genes, but only those produced by his daughters are affected by his genes for milk.

If the grandprogeny produced by his daughters are constantly heavier than those produced by his sons, then this is likely to be due to his superior genes for milk production.

Interpretation

A bull with an EBV of +4 for 200-Day Milk is expected to produce heifer calves which will have above average maternal characteristics leading to their calves being 2kg heavier at 200-days than calves from heifers sired by a bull with an EBV of 0.

Maternal Calving Ease

This EBV predicts how easily a bull's daughters will calve. It should not be confused with the Calving Ease EBV which predicts how easily a bull's progeny will be born.

The Maternal Calving Ease EBV is calculated from calving records and is expressed as a % indicating the proportion of unassisted calvings.

Interpretation

A bull with a Maternal Calving Ease EBV of 2% will produce females that have 1% more unassisted calvings than a bull with an EBV of 0.

EBVs are also produced for: Longevity, Age at First Calving and Calving Interval but these are not yet published at breed sales.

7. How to Use EBVs and Indexes

EBVs are expressed in the same unit as the recorded trait (e.g. kg for 400-Day Weight, mm for Muscle Depth etc) and are relative to a Breed Benchmark, which is updated and published annually.

Limousin Breed Benchmark 2013

Trait	BOTTOM			AVERAGE	TOP		
	1%	10%	25%		25%	10%	1%
Gestation Length (days)	3.7	1.9	1.2	0.5	-0.2	-1.0	-2.6
Calving Ease (%)	-8.4	-4.7	-3.3	-2.3	-1.1	-0.3	1.0
Maternal Calving Ease	-1.0	-0.2	0.2	0.6	1.0	1.2	1.7
Birth Weight (kg)	3.4	2.4	1.9	1.3	0.9	0.4	-0.4
Calving Value	LM-4C	LM-2C	LM-1C	LM0C	LM1C	LM2C	LM4C
200-Day Milk (kg)	-6	-3	-2	-1	1	2	5
200-Day Weight (kg)	-4	6	12	17	25	32	45
400-Day Weight (kg)	-4	13	22	30	43	55	77
Muscle Depth (mm)	-0.7	0.6	1.2	2.1	3.1	4.1	6.0
Fat Depth (mm)	0.4	0.1	0.0	-0.1	-0.2	-0.3	-0.6
Beef Value	LM6	LM13	LM16	LM20	LM26	LM31	LM41
Maternal Value	LM-21V	LM-9V	LM-3V	LM4V	LM9V	LM16V	LM28V

When using EBVs it is important to remember that although they can be compared between herds, they can not be compared between breeds.

Using the Breed Benchmark, compare and contrast the EBVs and Indexes of the two young bulls below.

Bull A

Analysis Date	Calving Value	200 Day Milk (kg)	200 Growth (kg)	400 Growth (kg)	Muscle Depth (mm)	Fat Depth (mm)	Beef Value
24/10/2008	LM1C	4	28	42	4.1	-0.1	LM27
EBV							
Accuracy %	57	42	72	69	69	62	63
Index	100	120	122	117	128	103	120

100 day wt	200 day wt	300 day wt	400 day wt	500 day wt	Scanned
118	253	378	556	710	Yes

Signet
PLC's Signet Breeding Services

Bull B

Analysis Date	Calving Value	200 Day Milk (kg)	200 Growth (kg)	400 Growth (kg)	Muscle Depth (mm)	Fat Depth (mm)	Beef Value
24/10/2008	LM4C	-5	30	52	2.0	0.3	LM25
EBV							
Accuracy %	59	43	73	68	66	60	64
Index	120	86	124	125	107	76	116

100 day wt	200 day wt	300 day wt	400 day wt	500 day wt	Scanned
126	256	385	568	755	Yes

Signet
PLC's Signet Breeding Services

- ☐ Each bull has been fully weight recorded (i.e. they both have a complete set of 100-day adjusted weights), scanned (the box says 'Yes') and possesses satisfactory accuracy figures, given their age.
- ☐ Both bulls have EBVs for growth and carcase traits that are above the breed average, but in several ways their characteristics differ:
 - > Bull A has a higher Muscle Depth EBV
 - > Bull B has the highest EBVs for growth rate (weight) EBVs
 - > Bull A has a 200-Day Milk EBV in the Top10% of the breed
 - > Bull B has a Calving Value in the Top 10% of the breed

Bull A would be the most suitable out of the two for a unit where conformation takes high priority. The high 200-Day Milk Weight EBV would also make it suitable for herds where female replacements are retained for breeding.

The high Calving Value of Bull B indicates that it would be more suitable for mating to heifers. It could also be used in herds where a priority is to improve growth.

Remember

When trying to establish just how much influence a bull will pass on to his progeny it is important to remember to halve the value of the EBV, since the other half of a calf's genes comes from the cow.

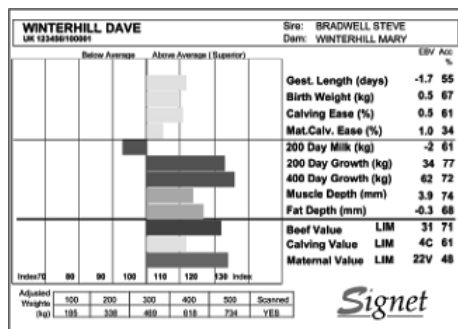
For example, a bull with a 400-Day Growth (weight) EBV of +62 is estimated to have the genetic potential to be 62kg heavier at 400 days of age compared to a bull with an EBV of 0.

Based on their sire's genetics, his calves would be expected to be 31kg heavier at that age when compared to calves by a bull with an EBV of 0, since they only inherit half of their growth genes from their sire (the other half coming from their dam).

8. UNDERSTANDING SALE CARDS AND CATALOGUES

Estimated Breeding Values on Sale Cards

EBVs and Indexes are produced on sale cards as shown below:



Bars that lie to the right of the central line indicate the EBV/Index is above breed average (and the further it is to the right, the higher above breed average it is). Similarly, bars to the left of the central line indicate the EBV/Index is below breed average (and the further to the left it is, the further below average it is).

In sale catalogues, the same figures are produced in table format similar to the examples of Bull A and Bull B above. The EBV Index (bottom line) will quickly indicate where values lie in relation to the breed average. The Breed Benchmark printed in the front pages of the catalogue will allow further refinement of this.

9. EBV and PEDIGREE INFORMATION JUST A CLICK AWAY

EBV and pedigree information on all Limousin cattle are just a few internet clicks away...

Step 1: Click the 'Basco Online Herd Book' button on the Limousin Society homepage (www.limousin.co.uk)

Step 2: In the 'All Breeds Quick Search' box type the name or ear number of the animal you are interested in or click on the 'Breeder Search' button to look at all animals belonging to or bred by a particular breeder.

The site will then tell you the animal's owner/breeder details, its EBVs, its pedigree and list its progeny with full links to all of their information.

10. FURTHER INFORMATION

For further information, please contact Alison Glasgow, British Limousin Cattle Society on telephone 01721 730664, e-mail alison@limousin.co.uk or visit the BLCS web site www.limousin.co.uk

2014 LIST OF ACCOMMODATION WITHIN EASY REACH OF BORDERWAY MART

FARM HOUSE ACCOMMODATION

Mrs P Armstrong, Longlands, Greenwoodside, Kirkclinton, Carlisle CA6 6DL

Tel: 01228 675130

Mrs M Harris, Whitbarrow Farm, Berrier, Penrith, Cumbria CA11 0XB

Tel: 01768 483366

Mrs D Nicholson, Gill Farm, Blackford, Carlisle. CA6 4EL

Tel: 01228 675326

Mr & Mrs D Stobart, Gladmuir, Broomfallen Road, Scotby, Carlisle CA4 8DG

Tel: 01228 513406

GUEST HOUSE ACCOMMODATION

Abbey Court Guest House, 24 London Road, Carlisle CA1 2EL

Tel: 01228 528696

Cherry Grove Guest House, 87 Petteril Street, Carlisle CA1 2AW

Tel: 01228 541942

Cornerways Guest House, 107 Warwick Road, Carlisle CA1 1EA

Tel: 01228 521733

Courtfield Guest House, 169 Warwick Road, Carlisle CA1 1LP

Tel: 01228 522767

Crossroads House, Brisco, Carlisle CA4 0QZ

Tel: 01228 528994

Fern Lee Guest House, 9 St Aiden's Road, Carlisle CA1 1LT

Tel: 01228 511930

Lynette Graham, Hollyside Lodge, Cumwhinton, Carlisle. CA4 8DL

Tel: 01228 562272

James & Elaine Knox, The Steading, Townhead Farm, Houghton, Carlisle. CA6 4JB

Tel: 01228 523019

Howard Lodge Guest House, 90 Warwick Road, Carlisle CA1 1JU

Tel: 01228 529842

Langleigh and Derwentlea, 6 & 14 Howard Place, Carlisle CA1 1HR

Tel: 01228 530440

Park Broom Lodge, Park Broom, Crosby On Eden, Carlisle CA6 4QH

Tel: 01228 573696

Town House B&B, 153 Warwick Road, Carlisle CA1 1LU

Tel: 01228 598782

HOTELS

*Crown Hotel, Station Road, Wetheral, Carlisle

Tel: 01228 561888

Angus Hotel 14-16 Scotland Road, Carlisle CA3 9DG

Tel: 01228 523546

Farlam Hall, Country House Hotel, Brampton, Cumbria

Tel: 016977 46234

Pinegrove Hotel, 262 London Road, Carlisle CA1 2QS

Tel: 01228 524828

Smiths Hotel Gretna Green, Headless Cross, Gretna Green, Dumfries & Galloway DG12 5EA

Tel: 01461 337007

SELF CATERING – CARAVAN SITE

Twin Willows Caravan Site/Waverley Cottage, The Beeches, Penton, Carlisle, CA6 5QD

Tel: 01228 577313

*Customers of H&H offered a Special Rate

Also log onto www.harrisonandhetherington.co.uk for further details of accommodation.

Vendors' Index & Herd Health Summary Carlisle February 2014

The Vendors' Index includes a condensed version of the Herd Health information submitted at point of entry by the vendor. For further information, please see Explanatory Notes & copy of Herd Health Declaration form also included in the catalogue.

Barron, W	BARRONS	13 - 15
Morrow Edge Farm, Burnhope, Co Durham, DH7 0DS (01207 529 950)		
- Currently on a 4 year TB testing interval		
- Member of a CHeCS controlled health scheme for Johnes, BVD, IBR & Lepto		
- Accredited free for Lepto & BVD		
- Johnes Risk Level 2		
Cornthwaite, D & R	MAYBE	1 - 12
Balgray Hill, Lockerbie, Dumfriesshire, DG11 2JT (01576 610206)		
- Currently on a 4 year TB testing interval		
- Member of a CHeCS controlled health scheme for Johnes & BVD		
- Accredited free for BVD		
- Johnes Risk Level 3		
- Routinely vaccinating against BVD & Lepto		
Cruickshank N & E	NORMANDE	45
Cowford Farm, Cleghorn, Lanark, ML11 8NR (01555 870244)		
- Currently on a 4 year TB testing interval		
- Member of a CHeCS controlled health scheme for Johnes & BVD		
- Johnes Risk Level 2		
- Routinely vaccinating against BVD		
Handley, J&I	GUNNERFLEET	46 - 55
Gunnerfleet Farm, Ingleton, Lancs, LA6 3AU (01524 241425)		
- Currently on a 4 year TB testing interval		
- Member of a CHeCS controlled health scheme for Johnes, BVD, IBR & Lepto		
- Johnes Risk Level 3		
- Routinely vaccinating against BVD, IBR & Lepto		
Henshall, PJ & E	RINGWAY	56 - 61
Sarkshields, Eaglesfield, Lockerbie, DG11 3AE (01461 800211)		
- Currently on a 4 year TB testing interval		
- Member of a CHeCS controlled health scheme for Johnes & BVD		
- Accredited free for BVD		
- Johnes Risk Level 2		
- Routinely vaccinating against BVD		
Hutton, GL	CLOUGHHEAD	27 - 44
Setmabanning, Threlkeld, Keswick, Cumbria, CA12 4TT (01768 779229)		
- Currently on a 4 year TB testing interval		
- Member of a CHeCS controlled health scheme for Johnes		
- Johnes Risk Level 4		
- Routinely vaccinating against BVD & Johnes		
Phillips, M	NEWMARK	73
Mains of Minnydow, Springholm, Castle Douglas, DG7 3LS		
- Currently on a 4 year TB testing interval		
- Member of a CHeCS controlled health scheme for Johnes & BVD		
- Johnes Risk Level 2		
- Routinely vaccinating against BVD		

Renton & Redden Partners	MEADOWRIG	70 - 72
Clarence House, Shieldfield Terrace, Tweedmouth, Berwick upon Tweed, TD15 2EE		
<ul style="list-style-type: none"> - Currently on a 4 year TB testing interval - Member of a CHeCS controlled health scheme for Johnes & BVD - Accredited free for BVD - Johnes Risk Level 1 - Routinely vaccinating against BVD 		
Suddes, JWR & M	TOWDYPOTTS	16 - 17
Towdy Potts Farm, Wolsingham, Co Durham, DL13 3BQ (01388 527376)		
<ul style="list-style-type: none"> - Currently on a 4 year TB testing interval - Member of a CHeCS controlled health scheme for Johnes, IBR & Lepto - Accredited free for IBR - Johnes Risk Level 1 - Routinely vaccinating against BVD 		
Watson, A & W	SAUNDERS	18 - 26
Saunders Close, Slaggyford, Brampton, Cumbria, CA8 7NS (01434 381243)		
<ul style="list-style-type: none"> - Currently on a 4 year TB testing interval - Member of a CHeCS controlled health scheme for Johnes & BVD - Accredited free for BVD - Johnes Risk Level 1 		
Wilde, Mr S	EWDENVALE	62 - 69
Spite Winter House, Bradfield, Sheffield, S6 6LJ (0114 2851264)		
<ul style="list-style-type: none"> - Currently on a 4 year TB testing interval - Member of a CHeCS controlled health scheme for Johnes & BVD - Accredited free for BVD - Johnes Risk Level 1 - Routinely vaccinating against BVD & Lepto 		

Disclaimer: The health information above is as supplied by, or on behalf of the breeder at time of entry. The responsibility for the accuracy of the information rests solely with the breeder and not with the British Limousin Cattle Society Ltd



INSURANCE BROKERS

Rural & Commercial Insurance

Good Honest Cover

With our pedigree we know about farm insurance!
Offering a totally Personal Service at Competitive
Rates on a wide range of farm insurances including:

- Farm Property & Liabilities
- Environmental Risks
- Livestock Insurance
- Farm Motor / Combined
- Income Protection
- Home & Personal Accident

Contact H&H Insurance TODAY on **01228 406290**
or email **info@hhib.co.uk** for a FREE 'no obligation'
review of your farm Insurances.

For more information on our range of insurance services visit

hhinsurancebrokers.co.uk



H&H Insurance Brokers is authorised and regulated by the FSA No 305809

MAYBE HERD

We would like to welcome you to our first production sale. The Maybe Herd was established in 1994 with heifers from the Hartside, Ruffland and Lodge herds and at a later date heifers from Ronick and Sarkley herds. Apart from the most recent purchase of a cow in the College dispersal sale all our bloodlines relate back to these five heifers.

Our sole aim in establishing the Maybe Herd was to provide easy calving, well grown and naturally fleshed bulls for our 370 strong commercial herd. As the herd grew we have been able to sell surplus bulls at home, and apart from a consignment of heifers exported to Poland we have constantly brought heifers into the herd to increase numbers and improve quality. We feel that winning the North West Limousin Breeders Club herd competition in 2013, 2011, 2010, 2009 and runners up in 2012 (Medium Herd section) reflects the standard we have achieved with selective breeding.

The heifers we offer for sale represent all our 'G' registered females apart from 6 spring born heifers which have already calved. Apart from one animal sired by Fieldson Alfie the other heifers have been sired by the herds stock bulls which have all been used, and performed well on our commercial cattle. Commercial fat heifers regularly top the local market and bullocks that are sold store are much sought after.

Galbally C458 won Reserve Senior Champion 2009 Roscrea. He is a son of Neuf, his dam is a Moero cow and he has a Beef Value of LM+30. He is very easy calving, and has been used extensively on commercial heifers.

Bremore Artist was Reserve Junior Champion 2007 Roscrea where we purchased a half share. He is a Nenuphar son out of Samba and has a Beef Value of LM+32. He won Reserve Junior Champion at the Royal Highland Show 2007 – only time shown. Stock sired by him in the Glenrock Herd have sold up to £10,000.

Netherhall Epic sired by the noted Sympa and out of the very milky Montgomery Vixen, has a Beef Value of LM+49 placing him in the top 10 Basco sires list. Another extremely easy calving bull which has been used extensively on commercial heifers.

We have enjoyed considerable success in the show ring in recent years, and have much pleasure in offering for sale Maybe Girly who has already had a very successful show career. She is the daughter of the current Scottish Female of the Year Maybe Cute.

Health Status (this includes ALL our commercial cattle)

- Currently on a 4 year TB testing interval (last clear test Jan 2013)
- Member of CheCS controlled health scheme for Johnes and BVD
- BVD Accredited

We would like to wish all buyers the best of luck with their purchases.

David & Rosemary Cornthwaite

Lot D & R Cornthwaite
1 MAYBE GOLEENA
 CIB11-025 Born 30/09/11 UK581987/703814
 ggs. CASSIS 40-88-028-055
 gs. NEUF 22-97-004-114
 ggd. JUNGLE 22-94-004-270
 Sire ***GALBALLY C458 IE371218310458**
 ggs. MOERO 19-96-002-648
 gd. GALBALLY U251 IE371218310251
 ggd. GALBALLY ROZANNA IE371218390119
 ggs. GIGOLO 87-91-003-401
 gs. MARQUIS 87-96-001-260
 ggd. ETAMINE 87-89-006-242
 Dam **MAYBE VOLEENA CIB04-005**
 ggs. DAUPHIN 19-88-004-715
 gd. SARKLEY NOLEENA PBO97-093
 ggd. SARKLEY HILARY PBO92-028

Signet Recorded Weights	100	200	300	400	500			
Last BLUP'd 16/11/2013	145	244	0	0	0			
MLC	C E(%)	C V	200M(kg)	200G(kg)	400G(kg)	Fat(mm)	MD(mm)	BV
Data EBV	-3.0	LM-3C	0	+18	+37	-0.1	+1.7	LM+25
Acc %	44	46	38	47	45	38	44	46
BLCS Index	98	79	103	98	102	99	94	103

Service Details Ran from 14th August until 24th September with ***NETHERHALL EPIC (KCI09-014)**. PD'd In Calf.

Lot D & R Cornthwaite
2 MAYBE GONEWITHTHEWIND
 CIB11-015 Born 01/07/11 UK581987/503728 Got by AI
 ggs. OCTOPUS 87-10-671-030
 gs. SYMPA 48-01-006-969
 ggd. OPERETTE 48-98-133-040
 Sire ***NETHERHALL EPIC KCI09-014**
 ggs. LASSO 22-95-003-786
 gd. MONTGOMERY VIXON JT04-031
 ggd. MONTGOMERY PORTIA JT99-026
 ggs. BROADMEADOWS CANNON CAVC-031
 gs. RONICK HAWK DY92-026
 ggd. RONICK ESTHER DYE-040
 Dam **MAYBE DARLEEN CIB08-003**
 ggs. MARQUIS 87-96-001-260
 gd. MAYBE AILEEN CIB05-012
 ggd. SARKLEY NOLEENA PBO97-093

Signet Recorded Weights	100	200	300	400	500			
Last BLUP'd 16/11/2013	0	0	375	0	0			
MLC	C E(%)	C V	200M(kg)	200G(kg)	400G(kg)	Fat(mm)	MD(mm)	BV
Data EBV	-2.0	LMOC	+1	+33	+65	-0.2	+4.1	LM+39
Acc %	56	63	42	50	49	46	50	53
BLCS Index	104	97	109	116	121	106	114	125

Service Details Ran from 14th August until 24th September with ***GALBALLY C458 (IE371218310458)**. PD'd In Calf.

MAYBE GONEWITHTHEWIND is one of the first in calf **Netherhall Epic** daughters to be offered for sale. She is naturally fleshed and like her sire has tremendous width and shape. She demonstrates **Epics'** breeding potential.

Lot **3** D & R Cornthwaite
MAYBE GOLIMP
 CIB11-012 Born 07/07/11 UK581987/103731 Got by AI
 ggs. LEO 23-95-071-399
 gs. NENUPHAR 87-97-011-143
 ggd. GIROFLEE 87-91-000-077
 Sire ***BREMORE ARTIST IE171088870160**
 ggs. OBLIGEANT 87-98-004-226
 gd. SAMBA 87-23-740-568
 ggd. DILIGENCE 87-88-009-130
 ggs. BROADMEADOWS CANNON CAVC-031
 gs. RONICK HAWK DY92-026
 ggd. RONICK ESTHER DYE-040
 Dam **MAYBE VERYRELAXT CIB04-008**
 ggs. HUDSCALES OMAR CAW98-004
 gd. MAYBE RELAXT CIB00-001
 ggd. MAYBE LIVELY CIB95-003

Signet Recorded Weights	100	200	300	400	500			
Last BLUP'd 16/11/2013	0	0	332	0	0			
MLC	C E(%)	C V	200M(kg)	200G(kg)	400G(kg)	Fat(mm)	MD(mm)	BV
Data EBV	-4.9	LM-1C	+1	+21	+45	-0.6	+3.6	LM+30
Acc %	60	67	46	60	58	48	57	61
BLCS Index	86	91	109	102	107	132	110	112

Service Details Ran from 14th August until 24th September with ***NETHERHALL EPIC (KCI09-014)**. PD'd In Calf.

MAYBE RELAXT (*gdam*) is full sister to **Maybe Tranquil**, Interbreed Champion Cumberland Show 2005.

Lot **4** D & R Cornthwaite
MAYBE GETUP
 CIB11-020 Born 02/08/11 UK581987/303761 Got by AI
 ggs. LEO 23-95-071-399
 gs. NENUPHAR 87-97-011-143
 ggd. GIROFLEE 87-91-000-077
 Sire ***BREMORE ARTIST IE171088870160**
 ggs. OBLIGEANT 87-98-004-226
 gd. SAMBA 87-23-740-568
 ggd. DILIGENCE 87-88-009-130
 ggs. GENUS HIDALGO 37-92-007-027
 gs. HUDSCALES OMAR CAW98-004
 ggd. HUDSCALES LIZ CAW95-008
 Dam **MAYBE UPPISH CIB03-010**
 ggs. COCKLESHELL EAGLE PBE-018-FOT
 gd. MAYBE POSH CIB99-002
 ggd. MAYBE LOVELY CIB95-002

Signet Recorded Weights	100	200	300	400	500			
Last BLUP'd 16/11/2013	139	239	339	0	0			
MLC	C E(%)	C V	200M(kg)	200G(kg)	400G(kg)	Fat(mm)	MD(mm)	BV
Data EBV	-4.3	LM-1C	0	+17	+36	-0.5	+2.6	LM+26
Acc %	60	66	42	56	55	44	54	59
BLCS Index	90	95	103	97	101	126	101	105

Service Details Ran from 14th August until 24th September with ***NETHERHALL EPIC (KCI09-014)**. PD'd In Calf.

All females out of **Maybe Uppish** (*dam*) have been retained in the herd. All are very quiet.

Lot **5** D & R Cornthwaite
MAYBE GNOME
 CIB11-027 Born 08/11/11 UK581987/203816
 ggs. CASSIS 40-88-028-055
 gs. NEUF 22-97-004-114
 ggd. JUNGLE 22-94-004-270
 Sire ***GALBALLY C458 IE371218310458**
 ggs. MOERO 19-96-002-648
 gd. GALBALLY U251 IE371218310251
 ggd. GALBALLY ROZANNA IE371218390119
 ggs. GENUS HIDALGO 37-92-007-027
 gs. HUDSCALES OMAR CAW98-004
 ggd. HUDSCALES LIZ CAW95-008
 Dam **MAYBE TOTTY CIB02-010**
 ggs. COCKLESHELL EAGLE PBE-018-FOT
 gd. MAYBE POSH CIB99-002
 ggd. MAYBE LOVELY CIB95-002

Signet Recorded Weights	100	200	300	400	500			
Last BLUP'd 16/11/2013	155	272	0	0	0			
MLC	C E(%)	C V	200M(kg)	200G(kg)	400G(kg)	Fat(mm)	MD(mm)	BV
Data EBV	-2.4	LM+1C	0	+20	+38	-0.1	+2.5	LM+26
Acc %	42	44	33	41	40	32	39	43
BLCS Index	101	93	103	101	102	99	100	106

Service Details Ran from 14th August until 24th September with ***NETHERHALL EPIC (KC109-014)**. PD'd In Calf.

Lot **6** D & R Cornthwaite
MAYBE GALAXY
 CIB11-024 Born 10/10/11 UK581987/603813
 ggs. CASSIS 40-88-028-055
 gs. NEUF 22-97-004-114
 ggd. JUNGLE 22-94-004-270
 Sire ***GALBALLY C458 IE371218310458**
 ggs. MOERO 19-96-002-648
 gd. GALBALLY U251 IE371218310251
 ggd. GALBALLY ROZANNA IE371218390119
 ggs. GENUS HIDALGO 37-92-007-027
 gs. HUDSCALES OMAR CAW98-004
 ggd. HUDSCALES LIZ CAW95-008
 Dam **MAYBE TRUFFLES CIB02-012**
 ggs. CLOUGHHEAD CHARLIE HCXC-010
 gd. MAYBE LOVELY CIB95-002
 ggd. HARTSIDE GLEAM TWG-538

Signet Recorded Weights	100	200	300	400	500			
Last BLUP'd 16/11/2013	138	231	0	0	0			
MLC	C E(%)	C V	200M(kg)	200G(kg)	400G(kg)	Fat(mm)	MD(mm)	BV
Data EBV	-1.4	LM+1C	+1	+16	+35	-0.1	+2.0	LM+24
Acc %	43	44	34	41	40	33	40	43
BLCS Index	108	104	109	96	100	99	96	103

Service Details Ran from 19th November until 30th December with ***NETHERHALL EPIC (KC109-014)**. PD'd In Calf.

Lot **7** D & R Cornthwaite
MAYBE GENTRY
 CIB11-032 Born 08/12/11 UK581987/303831
 ggs. CASSIS 40-88-028-055
 gs. NEUF 22-97-004-114
 ggd. JUNGLE 22-94-004-270
 Sire ***GALBALLY C458 IE371218310458**
 ggs. MOERO 19-96-002-648
 gd. GALBALLY U251 IE371218310251
 ggd. GALBALLY ROZANNA IE371218390119
 ggs. GIGOLO 87-91-003-401
 gs. MARQUIS 87-96-001-260
 ggd. ETAMINE 87-89-006-242
 Dam **MAYBE ARISTOCRATIC CIB05-020**
 ggs. COCKLESHELL EAGLE PBE-018-FOT
 gd. MAYBE POSH CIB99-002
 ggd. MAYBE LOVELY CIB95-002

Signet Recorded Weights	100	200	300	400	500			
Last BLUP'd 16/11/2013	132	225	0	0	0			
MLC	C E(%)	C V	200M(kg)	200G(kg)	400G(kg)	Fat(mm)	MD(mm)	BV
Data EBV	-2.9	LM-1C	0	+19	+39	0	+1.7	LM+23
Acc %	43	44	37	42	42	37	41	43
BLCS Index	98	93	103	99	103	93	94	101

Service Details Ran from 19th November until 30th December with ***NETHERHALL EPIC (KCI09-014)**. PD'd In Calf.

MAYBE ARISTOCRATIC (dam) is a large naturally fleshed cow. All **Aristocratic's** female calves have been retained in the herd.

Lot **8** D & R Cornthwaite
MAYBE GAGA
 CIB11-014 Born 02/07/11 UK581987/603729 Got by AI
 ggs. MONKEYTRICKS 1
 gs. GUNNERFLEET PLUNAS HDR99-010
 ggd. GUNNERFLEET LUNA HDR95-003-FOT
 Sire ***FIELDSON ALFY FCE05-384**
 ggs. BROADMEADOWS CANNON CAVC-031
 gd. EDEN NATASHA HCS97-074
 ggd. BIRTLES DAISY NLD-029
 ggs. GIGOLO 87-91-003-401
 gs. MARQUIS 87-96-001-260
 ggd. ETAMINE 87-89-006-242
 Dam **MAYBE DIVA CIB08-007**
 ggs. HUDSCALES OMAR CAW98-004
 gd. MAYBE UPPISH CIB03-010
 ggd. MAYBE POSH CIB99-002

Signet Recorded Weights	100	200	300	400	500			
Last BLUP'd 16/11/2013	0	0	328	0	0			
MLC	C E(%)	C V	200M(kg)	200G(kg)	400G(kg)	Fat(mm)	MD(mm)	BV
Data EBV	-6.5	LM-1C	+1	+20	+36	-0.1	+3.7	LM+25
Acc %	62	66	52	58	57	54	57	59
BLCS Index	76	95	109	101	101	99	110	103

Service Details Ran from 14th August until 24th September with ***NETHERHALL EPIC (KCI09-014)**. PD'd In Calf.

MAYBE GAGA is a very shapely heifer by **Fieldson Alf**y.

BORDERWAY AGRI-EXPO 2014

FRIDAY 31st OCTOBER 2014

Borderway Centre · Carlisle

Show Office: 01228 406230

www.harrisonandhetherington.co.uk

- National Suckled Calf & Primestock Show
- National Prime Sheep Show
- Also National Breed Society Calf Shows for Aberdeen Angus, British Blue, Hereford, Beef Shorthorn and Simmental and Special Mule Sheep Show

also on show . . .

- Machinery Show & Demonstrations
- Young Farmers Club Competitions
- Trade Stands & Educational Exhibits

CHAMPION

Lot D & R Cornthwaite
9 MAYBE GIRLY
 CIB11-022

Born 10/10/11 UK581987/703807

ggs. CASSIS 40-88-028-055

gs. NEUF 22-97-004-114

ggd. JUNGLE 22-94-004-270

Sire *GALBALLY C458 IE371218310458

ggs. MOERO 19-96-002-648

gd. GALBALLY U251 IE371218310251

ggd. GALBALLY ROZANNA IE371218390119

ggs. BROADMEADOWS CANNON CAVC-031

gs. RONICK HAWK DY92-026

ggd. RONICK ESTHER DYE-040

Dam MAYBE CUTE CIB07-004

ggs. CLOUGHHEAD CHARLIE HCXC-010

gd. MAYBE LOVELY CIB95-002

ggd. HARTSIDE GLEAM TWG-538

Signet Recorded Weights	100	200	300	400	500			
Last BLUP'd 16/11/2013	167	288	0	0	0			
MLC	C E(%)	C V	200M(kg)	200G(kg)	400G(kg)	Fat(mm)	MD(mm)	BV
Data EBV	-2.5	LM-1C	+3	+19	+43	-0.2	+2.5	LM+29
Acc %	45	57	39	42	41	39	42	45
BLCS Index	101	94	120	99	106	106	100	110

Service Details Ran from 19th November until 30th December with ***NETHERHALL EPIC (KCI09-014)**.

MAYBE GIRLY is the daughter of the current Scottish Female of the Year **Maybe Cute**. She was shown at foot when her dam won Interbreed Champion Dumfries Show 2012, along with other Breed Championship at Wigtown and Stewartry Shows. On her own merit she won Interbreed Champion Langholm Show at only 11 months old, also 2nd prize Best Young Heifer North West Club. As a maiden heifer she won Reserve Champion to her mother **Maybe Cute** at Wigtown and Stewartry Shows, she was also a member of the winning Interbreed team of 3 at Kelso Show. **Maybe Cute (dam)** is a very milky cow. **Maybe Girly's** sister this year won Interbreed Champion at Langholm Show aged 5 months old.

Lot D & R Cornthwaite
10 MAYBE GEOLOGICAL
 CIB11-033

Born 10/12/11 UK581987/403832

ggs. CASSIS 40-88-028-055

gs. NEUF 22-97-004-114

ggd. JUNGLE 22-94-004-270

Sire *GALBALLY C458 IE371218310458

ggs. MOERO 19-96-002-648

gd. GALBALLY U251 IE371218310251

ggd. GALBALLY ROZANNA IE371218390119

ggs. GIGOLO 87-91-003-401

gs. MARQUIS 87-96-001-260

ggd. ETAMINE 87-89-006-242

Dam MAYBE BIOLOGICAL CIB06-019

ggs. JOCKEY 19-94-006-256

gd. COLLEGE SADIE FBA01-018

ggd. COLLEGE NIKI FBA97-010

Signet Recorded Weights	100	200	300	400	500			
Last BLUP'd 16/11/2013	131	223	0	0	0			
MLC	C E(%)	C V	200M(kg)	200G(kg)	400G(kg)	Fat(mm)	MD(mm)	BV
Data EBV	-3.0	LMOC	-1	+21	+41	0	+1.6	LM+23
Acc %	45	45	37	41	40	38	40	42
BLCS Index	98	97	98	102	105	93	93	100

Service Details Ran from 14th August until 24th September with ***NETHERHALL EPIC (KCI09-014)**.

MAYBE BIOLOGICAL (dam) is a very correct naturally fleshed large framed cow, who was successfully shown as a maiden heifer. **Maybe Geological's** full sister has been retained in the herd and has a very good **Netherhall Epic** calf at foot.

Lot D & R Cornthwaite
11 MAYBE GHOSTLY

CIB11-019 Born 04/08/11 UK581987/203760 Got by AI
 ggs. OCTOPUS 87-10-671-030
 gs. SYMPA 48-01-006-969
 ggd. OPERETTE 48-98-133-040

Sire *NETHERHALL EPIC KCI09-014

ggs. LASSO 22-95-003-786
 gd. MONTGOMERY VIXON JT04-031
 ggd. MONTGOMERY PORTIA JT99-026
 ggs. NENUPHAR 87-97-011-143
 gs. BREMORE ARTIST IE171088870160
 ggd. SAMBA 87-23-740-568

Dam MAYBE DIANNA CIB08-008

ggs. MARQUIS 87-96-001-260
 gd. MAYBE ABBY CIB05-013
 ggd. RONICK LIBBY DY95-081

Signet Recorded Weights	100	200	300	400	500				
Last BLUP'd 16/11/2013	120	200	281	0	0				
MLC	C E(%)	C V	200M(kg)	200G(kg)	400G(kg)	Fat(mm)	MD(mm)	BV	
Data EBV	-3.2	LM-1C	0	+31	+63	-0.3	+3.7	LM+36	
Acc %	55	62	39	50	48	44	50	52	
BLCS Index	96	94	103	113	120	113	110	121	

Service Details Ran from 19th November until 30th December with ***NETHERHALL EPIC (KCI09-014)**. PD'd In Calf.

Lot D & R Cornthwaite
12 MAYBE GENTEEL

CIB11-029 Born 19/11/11 UK581987/503826
 ggs. CASSIS 40-88-028-055
 gs. NEUF 22-97-004-114
 ggd. JUNGLE 22-94-004-270

Sire *GALBALLY C458 IE371218310458

ggs. MOERO 19-96-002-648
 gd. GALBALLY U251 IE371218310251
 ggd. GALBALLY ROZANNA IE371218390119
 ggs. VOLTIGEUR 19-84-009-930
 gs. DAIM 19-88-005-833
 ggd. LOLA 19-75-007-529

Dam MAYBE PLACID CIB99-001

ggs. BROADMEADOWS CANNON CAVC-031
 gd. MAYBE LIVELY CIB95-003
 ggd. LODGE HOPSCOTCH CBM92-084

Signet Recorded Weights	100	200	300	400	500				
Last BLUP'd 16/11/2013	103	168	0	0	0				
MLC	C E(%)	C V	200M(kg)	200G(kg)	400G(kg)	Fat(mm)	MD(mm)	BV	
Data EBV	-1.2	LM+1C	+1	+19	+39	-0.2	+2.3	LM+26	
Acc %	44	45	40	43	42	38	42	43	
BLCS Index	109	109	109	99	103	106	99	105	

Service Details Ran from 19th November until 30th December with ***NETHERHALL EPIC (KCI09-014)**. PD'd In Calf.

MAYBE PLACID (dam) was still breeding at 13 years old, **Placid's** latest calf by **Netherhall Epic** is one of the best young bulls bred at Balgray.

Lot W Barron
15 BARRONS HILDA
 BNI12-262 Born 11/04/12 UK105586/200256
 ggs. GLENROCK SPARTACUS IE01-152
 gs. GLENROCK VENTURA IE04-432
 ggd. GLENROCK SASPIRILLA IE01-148
 Sire ***AMPERTAINE COMMANDER MGD07-046**
 ggs. SYMPA 48-01-006-969
 gd. AMPERTAINE ANNABELLA MGD05-015
 ggd. KYPE SHARON CAQ01-041
 ggs. IONESCO 36-93-000-206
 gs. SARKLEY VOLVO PBO04-003
 ggd. HOLLY JEN HAF94-004
 Dam **BARRONS CALORIE BNI07-123**
 ggs. NENUPHAR 87-97-011-143
 gd. CORNSAY VALERIE SMT04-221
 ggd. REJANE 19-30-538-528

Signet Recorded Weights	100	200	300	400	500			
Last BLUP'd 16/11/2013	169	308	441	0	0			
MLC	C E(%)	C V	200M(kg)	200G(kg)	400G(kg)	Fat(mm)	MD(mm)	BV
Data EBV	-3.9	LM+1C	+1	+19	+34	-0.1	+4.0	LM+28
Acc %	62	61	52	74	70	49	66	72
BLCS Index	92	104	109	99	100	99	113	109

Service Details Ran from 25th December until sale day with ***MERESIDE GODOLPHIN (HCG11-424)**

Lot JWR & M Suddes
16 TOWDYPOTTS HOLLYHOCK
 STG12-242 Born 06/09/12 UK112448/500242 Got by AI
 ggs. GLENROCK SPARTACUS IE01-152
 gs. GLENROCK VENTURA IE04-432
 ggd. GLENROCK SASPIRILLA IE01-148
 Sire ***AMPERTAINE COMMANDER MGD07-046**
 ggs. SYMPA 48-01-006-969
 gd. AMPERTAINE ANNABELLA MGD05-015
 ggd. KYPE SHARON CAQ01-041
 ggs. ULTRABIEN 36-15-024-031
 gs. CLOUGHHEAD BUSTER HCX06-403
 ggd. CLOUGHHEAD THELMA HCX02-164
 Dam **TOWDYPOTTS EARTHA STG09-146**
 ggs. FARFONDRU 02-90-150-061
 gd. REPONSE 23-00-545-842
 ggd. HYACINTHE 23-92-019-098

Lot JWR & M Suddes
17 TOWDYPOTTS HERMIONE
 STG12-247 Born 17/09/12 UK112448/300247 Got by AI
 ggs. GLENROCK SPARTACUS IE01-152
 gs. GLENROCK VENTURA IE04-432
 ggd. GLENROCK SASPIRILLA IE01-148
Sire *AMPERTAINE COMMANDER MGD07-046
 ggs. SYMPA 48-01-006-969
 gd. AMPERTAINE ANNABELLA MGD05-015
 ggd. KYPE SHARON CAQ01-041
 ggs. ULTRABIEN 36-15-024-031
 gs. CLOUGHHEAD BUSTER HCX06-403
 ggd. CLOUGHHEAD THELMA HCX02-164
Dam TOWDYPOTTS ESME STG09-121
 ggs. MATH 87-96-014-500
 gd. RICHELLE 19-30-538-540
 ggd. HOTESSE 19-92-000-158

Lot A & W Watson
18 SAUNDERS INGRID
 WFAQ13-296 Born 24/04/13 UK107576/200617
 ggs. TAVIS 19-82-001-611
 gs. JUNIOR 19-94-012-999
 ggd. GALETTE 19-91-013-019
Sire SAUNDERS DIMITRI WFAQ08-162
 ggs. CLOUGHHEAD JURASSIC HCX94-131
 gd. SAUNDERS VERITY WFAQ04-074
 ggd. SARKLEY NADIA PBO97-002
 ggs. BROADMEADOWS CANNON CAVC-031
 gs. SAUNDERS PACIFIC WFAQ99-023
 ggd. WAVERBANK EXCELLENCE WACE-084
Dam SAUNDERS USADORA WFAQ03-061
 ggs. HARTSIDE JACKO TW94-756
 gd. SAUNDERS PETUNIA WFAQ99-020
 ggd. SARKLEY JAPONICA PBO94-023

Signet Recorded Weights	100	200	300	400	500			
Last BLUP'd 16/11/2013	171	0	0	0	0			
MLC	C E(%)	C V	200M(kg)	200G(kg)	400G(kg)	Fat(mm)	MD(mm)	BV
Data EBV	-5.0	LMOC	-1	+28	+42	-0.1	+3.7	LM+24
Acc %	52	57	45	57	55	35	53	61
BLCS Index	85	102	98	110	105	99	110	102

Lot A & W Watson
19 SAUNDERS IRIS
 WFQ13-298 Born 02/05/13 UK107576/600621
 ggs. DURANDAL 36-88-007-305
 gs. HEROS 36-92-005-318
 ggd. SIGIT 36-81-000-283

Sire **CENTRAL DART GBL08-001**
 ggs. LUDO 19-95-012-472
 gd. CENTRAL UNA GBL03-004
 ggd. WESTPIT NINA GAZ97-008
 ggs. CLOUGHHEAD JURASSIC HCX94-131
 gs. SAUNDERS RIJINSKY WFQ00-027
 ggd. SARKLEY JAPONICA PBO94-023

Dam **SAUNDERS CHANTELE WFQ07-125**
 ggs. DAIM 19-88-005-833
 gd. SAUNDERS ONDINE WFQ98-014
 ggd. WAVERBANK GLOBETROTTER WACG-111

Lot A & W Watson
20 SAUNDERS IZZYBIZZY
 WFQ13-0624 Born 15/05/13 UK107576/200624
 ggs. DURANDAL 36-88-007-305
 gs. HEROS 36-92-005-318
 ggd. SIGIT 36-81-000-283

Sire **CENTRAL DART GBL08-001**
 ggs. LUDO 19-95-012-472
 gd. CENTRAL UNA GBL03-004
 ggd. WESTPIT NINA GAZ97-008
 ggs. JACOT 36-94-005-555
 gs. ROCKY 36-15-030-964
 ggd. GLOIRE 36-91-002-380

Dam **SAUNDERS DELIA WFQ08-140**
 ggs. SAUNDERS PACIFIC WFQ99-023
 gd. SAUNDERS UNA WFQ03-054
 ggd. SAUNDERS OPEL WFQ98-013

Lot A & W Watson
21 SAUNDERS IVY
 WFQ13-0625 Born 17/05/13 UK107576/300625
 ggs. TARVIS 19-82-001-611
 gs. JUNIOR 19-94-012-999
 ggd. GALETTE 19-91-013-019

Sire **SAUNDERS DIMITRI WFQ08-162**
 ggs. CLOUGHHEAD JURASSIC HCX94-131
 gd. SAUNDERS VERITY WFQ04-074
 ggd. SARKLEY NADIA PBO97-002
 ggs. CLOUGHHEAD JURASSIC HCX94-131
 gs. SAUNDERS UMAR WFQ03-055
 ggd. SARKLEY NADIA PBO97-002

Dam **SAUNDERS BRAMBLE WFQ06-102**
 ggs. DAIM 19-88-005-833
 gd. SAUNDERS ONDINE WFQ98-014
 ggd. WAVERBANK GLOBETROTTER WACG-111

Lot **22** A & W Watson
SAUNDERS IZZY
 WFQ13-0629 Born 28/05/13 UK107576/700629
 ggs. TARVIS 19-82-001-611
 gs. JUNIOR 19-94-012-999
 ggd. GALETTE 19-91-013-019
 Sire **SAUNDERS DIMITRI WFQ08-162**
 ggs. CLOUGHHEAD JURASSIC HCX94-131
 gd. SAUNDERS VERITY WFQ04-074
 ggd. SARKLEY NADIA PBO97-002
 ggs. BROADMEADOWS CANNON CAVC-031
 gs. SAUNDERS PACIFIC WFQ99-023
 ggd. WAVERBANK EXCELLENCE WACE-084
 Dam **SAUNDERS AMY WFQ05-091**
 ggs. CLOUGHHEAD JURASSIC HCX94-131
 gd. SAUNDERS RUBY WFQ00-029
 ggd. SARKLEY LUCYLOCKET PBO95-055

Lot **23** A & W Watson
SAUNDERS ITZYBITZY
 WFQ13-0630 Born 25/06/13 UK107576/100630
 ggs. DURANDAL 36-88-007-305
 gs. HEROS 36-92-005-318
 ggd. SIGIT 36-81-000-283
 Sire **CENTRAL DART GBL08-001**
 ggs. LUDO 19-95-012-472
 gd. CENTRAL UNA GBL03-004
 ggd. WESTPIT NINA GAZ97-008
 ggs. CLOUGHHEAD JURASSIC HCX94-131
 gs. SAUNDERS RIJINSKY WFQ00-027
 ggd. SARKLEY JAPONICA PBO94-023
 Dam **SAUNDERS BABYPEARL WFQ06-106**
 ggs. DAIM 19-88-005-833
 gd. SAUNDERS PERLE WFQ99-019
 ggd. CLOUGHHEAD HAZEL HCX92-047

SAUNDERS ITZYBITZY is full sister to **Saunders Goldie** who sold for 2800gns Carlisle Feb 2012 aged 8 months.

Lot A & W Watson
24 SAUNDERS ITANO
 WFQ13-0633 Born 12/07/13 UK107576/400633
 ggs. TARVIS 19-82-001-611
 gs. JUNIOR 19-94-012-999
 ggd. GALETTE 19-91-013-019
 Sire **SAUNDERS DIMITRI WFQ08-162**
 ggs. CLOUGHHEAD JURASSIC HCX94-131
 gd. SAUNDERS VERITY WFQ04-074
 ggd. SARKLEY NADIA PBO97-002
 ggs. PAQUEBOT 24-79-016-112
 gs. RAKE TERENCE JKT-020
 ggd. OLGA 19-78-001-262
 Dam **SARKLEY UTANO PBO03-042**
 ggs. RONICK HAWK DY92-026
 gs. FAIDRE PAT RCX99-008
 ggd. GLANGWDEN IVANA JBW93-032

SAUNDERS ITANO is full sister to **Saunders Butano** who is the dam of **Saunders Hannah** sold Feb 2013 to Holland for 4200gns aged 9 months.

Lot A & W Watson
25 SAUNDERS IVORY
 WFQ13-0635 Born 20/07/13 UK107576/600635
 ggs. DURANDAL 36-88-007-305
 gs. HEROS 36-92-005-318
 ggd. SIGIT 36-81-000-283
 Sire **CENTRAL DART GBL08-001**
 ggs. LUDO 19-95-012-472
 gd. CENTRAL UNA GBL03-004
 ggd. WESTPIT NINA GAZ97-008
 ggs. BROADMEADOWS CANNON CAVC-031
 gs. CLOUGHHEAD JURASSIC HCX94-131
 ggd. GLORIEUSE 23-91-059-999
 Dam **SAUNDERS RUBY WFQ00-029**
 ggs. SARKLEY GOLDDIGGER PBOG-021
 gd. SARKLEY LUCYLOCKET PBO95-055
 ggd. WINSBURY BEAUTY BEDB-006-FOT

Lot A & W Watson
26 NON PEDIGREE – 355
 Born 25/04/13 UK107576/300618.
 Sire **SAUNDERS DIMITRI WFQ08-162**

Are your lambs getting the best start?

Boost immunity with First Thirst® colostrum. They deserve it!

First Thirst® Colostrum Supplement

- Easy mixing powder for new-born lambs
- Full-fat , so provides maximum energy

First Thirst® *Super-Lamb* Colostrum

- Pure dried colostrum - NOTHING added and NOTHING taken away!
- Elite Colostrum for Elite Lambs

"We have been using various makes of dried lamb colostrum over the years and found a surprising inconsistency with the results, some with dire outcomes. This is the first year we have tried 'First Thirst Super Lamb Colostrum' and we have been thrilled with the results.

"We have had a couple of occasions where ewes have lambed with no milk for a couple of hours, or when the lambs were a little weak. When you know you only have a few hours, it's imperative to get a quality feed into them as soon as possible. You only have one chance to get it right.

"The lambs that we have fed with the new colostrum have done fantastically well. We wholeheartedly recommend this product; it has been a success and we will definitely buy more for the next lambing season."

Summerfields Border Leicesters.

*Buy straight from the manufacturer,
so you get a high quality product at the right price!*



G Shepherd Animal Health
Advice, Quality & Value

m: 07778 191964 t: 01772 690333

e: office@gshepherd.co.uk w: www.gshepherd.co.uk



Lot GL Hutton
27 CLOUGHHEAD GYPSY
 HCX11-841 Born 28/11/11 UK101983/200841
 ggs. OURSON 87-78-002-862
 gs. UTRILLO 19-31-859-900
 ggd. GENTILLE 23-91-053-162
 Sire **DELICIEUX 19-33-426-585**
 ggs. MILOU 19-96-018-369
 gd. VIENOISE 19-32-055-935
 ggd. RAZZIA 19-30-688-834
 ggs. NESTOR 19-97-006-771
 gs. UGUES 19-31-558-775
 ggd. ECLIPSE 19-89-009-628
 Dam **CLOUGHHEAD BILLIEJEAN HCX06-428**
 ggs. HEROS 36-92-005-318
 gd. CLOUGHHEAD JEAN HCX94-096-FOT
 ggd. RUADH THELMA CAFT-003

Lot GL Hutton
28 CLOUGHHEAD GLORY
 HCX11-843 Born 30/11/11 UK101983/400843
 ggs. LUC 87-75-001-764
 gs. OURSON 87-78-002-862
 ggd. EBLOUISSANTE 87-69-005-644
 Sire **UTRILLO 19-31-859-900**
 ggs. CONCERT 23-87-052-219
 gd. GENTILLE 23-91-053-162
 ggd. USUELLE 23-83-051-972
 ggs. OMAR 19-30-288-541
 gs. ULTRABIEN 36-15-024-031
 ggd. NOUNOU 36-97-009-250
 Dam **CLOUGHHEAD BESSIE HCX06-425**
 ggs. JEROME 23-94-026-101
 gd. CLOUGHHEAD PEARL HCX99-735
 ggd. GASCOGNE 23-91-060-414

Lot GL Hutton
29 CLOUGHHEAD HAZEL
 HCX12-854 Born 21/05/12 UK101983/100854
 ggs. LUC 87-75-001-764
 gs. OURSON 87-78-002-862
 ggd. EBLOUISSANTE 87-69-005-644
 Sire **UTRILLO 19-31-859-900**
 ggs. CONCERT 23-87-052-219
 gd. GENTILLE 23-91-053-162
 ggd. USUELLE 23-83-051-972
 ggs. NESTOR 19-97-006-771
 gs. UGUES 19-31-558-775
 ggd. ECLIPSE 19-89-009-628
 Dam **CLOUGHHEAD BLAZE HCX06-442**
 ggs. CLOUGHHEAD JURASSIC HCX94-131
 gd. CLOUGHHEAD NOVELTY HCX97-213
 ggd. COMTESSE 23-87-055-952

Lot GL Hutton
30 CLOUGHHEAD HELEN
 HCX12-858 Born 24/05/12 UK101983/500858
 ggs. LUC 87-75-001-764
 gs. OURSON 87-78-002-862
 ggd. EBLOUISSANTE 87-69-005-644

Sire UTRILLO 19-31-859-900
 ggs. CONCERT 23-87-052-219
 gd. GENTILLE 23-91-053-162
 ggd. USUELLE 23-83-051-972
 ggs. GABIN 87-91-013-395
 gs. BARIL 23-07-240-344
 ggd. UDINE 23-03-331-148

Dam CLOUGHHEAD ELIZABETH HCX09-629
 ggs. UGUES 19-31-558-775
 gd. CLOUGHHEAD BEATRIX HCX06-400
 ggd. IMAGE 86-93-111-405

Lot GL Hutton
31 CLOUGHHEAD HATTY
 HCX12-860 Born 26/05/12 UK101983/700860
 ggs. LUC 87-75-001-764
 gs. OURSON 87-78-002-862
 ggd. EBLOUISSANTE 87-69-005-644

Sire UTRILLO 19-31-859-900
 ggs. CONCERT 23-87-052-219
 gd. GENTILLE 23-91-053-162
 ggd. USUELLE 23-83-051-972
 ggs. DAUPHIN 19-88-004-715
 gs. OBJAT 19-30-299-413
 ggd. MELODIE 19-96-004-346

Dam CLOUGHHEAD ELLE HCX09-622
 ggs. JEROME 23-94-026-101
 gd. CLOUGHHEAD RAQUEL HCX00-028
 ggd. BROADMEADOWS JEMMA CAV94-008

Lot GL Hutton
32 CLOUGHHEAD HILDA
 HCX12-862 Born 29/05/12 UK101983/200862
 ggs. LUC 87-75-001-764
 gs. OURSON 87-78-002-862
 ggd. EBLOUISSANTE 87-69-005-644

Sire UTRILLO 19-31-859-900
 ggs. CONCERT 23-87-052-219
 gd. GENTILLE 23-91-053-162
 ggd. USUELLE 23-83-051-972
 ggs. GABIN 87-91-013-395
 gs. BARIL 23-07-240-344
 ggd. UDINE 23-03-331-148

Dam CLOUGHHEAD ETHEL HCX09-631
 ggs. UGUES 19-31-558-775
 gd. CLOUGHHEAD BLOSSOM HCX06-430

Lot GL Hutton
33 CLOUGHHEAD HUSSY
 HCX12-867 Born 07/06/12 UK101983/700867
 ggs. OURSON 87-78-002-862
 gs. UTRILLO 19-31-859-900
 ggd. GENTILLE 23-91-053-162
 Sire **DELICIEUX 19-33-426-585**
 ggs. MILOU 19-96-018-369
 gd. VIENOISE 19-32-055-935
 ggd. RAZZIA 19-30-688-834
 ggs. GENIAL 87-91-002-491
 gs. CLOUGHHEAD ACE HCX05-339
 ggd. CLOUGHHEAD JANET HCX94-094-FOT
 Dam **CLOUGHHEAD DIANA HCX08-574**
 ggs. CLOUGHHEAD SIERRA HCX01-145
 gd. CLOUGHHEAD ULREKA HCX03-217
 ggd. GLORIEUSE 23-91-059-999

Lot GL Hutton
34 CLOUGHHEAD HERMIONE
 HCX12-869 Born 10/06/12 UK101983/200869
 ggs. LUC 87-75-001-764
 gs. OURSON 87-78-002-862
 ggd. EBLOUISSANTE 87-69-005-644
 Sire **UTRILLO 19-31-859-900**
 ggs. CONCERT 23-87-052-219
 gd. GENTILLE 23-91-053-162
 ggd. USUELLE 23-83-051-972
 ggs. IGOLO 87-93-004-822
 gs. GREENWELL MAJOR NK96-017
 ggd. GREENWELL FIONA NKF-106
 Dam **CLOUGHHEAD TREASURE HCX02-188**
 ggs. HEROS 87-92-010-016
 gd. MAGNETO 87-96-000-989
 ggd. HIRONDELLE 87-92-006-202

Lot GL Hutton
35 CLOUGHHEAD HILARY
 HCX12-872 Born 14/06/12 UK101983/500872
 ggs. LUC 87-75-001-764
 gs. OURSON 87-78-002-862
 ggd. EBLOUISSANTE 87-69-005-644
 Sire **UTRILLO 19-31-859-900**
 ggs. CONCERT 23-87-052-219
 gd. GENTILLE 23-91-053-162
 ggd. USUELLE 23-83-051-972
 ggs. DURANDAL 36-88-007-305
 gs. HEROS 36-92-005-318
 ggd. SIGIT 36-81-000-283
 Dam **CLOUGHHEAD VALENTINE HCX04-249**
 ggs. BROADMEADOWS CANNON CAVC-031
 gd. CLOUGHHEAD FAVOURITE HCXF-031-FOT
 ggd. RUADH THELMA CAFT-003



THE CROWN HOTEL



RELAX AND ENJOY

Quality Accommodation • Award Winning Cuisine
 Beautiful Gardens • Perfect Location • Conference Facilities
 Traditional Pub Food, Real Ales and Fine Wines
 Full Leisure Club Facilities • Beauty Rooms



The Crown Hotel Leisure and Conference Centre, Wetheral, Carlisle, Cumbria CA4 8ES

Tel: 01228 561888 Email: info@crownhotelwetheral.co.uk

www.crownhotelwetheral.co.uk



INVESTORS
IN PEOPLE

Lot GL Hutton
36 CLOUGHHEAD HOPEFUL
 HCX12-875 Born 23/07/12 UK101983/100875
 ggs. DAUPHIN 19-88-004-715
 gs. OBJAT 19-30-299-413
 ggd. MELODIE 19-96-004-346
 Sire **CLOUGHHEAD FANTASTIC HCX10-692**
 ggs. HEROS 36-92-005-318
 gd. CLOUGHHEAD VALERIE HCX04-250
 ggd. CLOUGHHEAD FAVOURITE HCXF-031-FOT
 ggs. PACTOLE 19-30-547-623
 gs. CLOUGHHEAD SIERRA HCX01-145
 ggd. CLOUGHHEAD NAJA HCX97-199
 Dam **CLOUGHHEAD UNICE HCX03-214**
 ggs. JEROME 23-94-026-101
 gd. CLOUGHHEAD MINNY HCX96-182
 ggd. CLOUGHHEAD JINNY HCX94-101

Lot GL Hutton
37 CLOUGHHEAD HETTY
 HCX12-879 Born 28/07/12 UK101983/500879
 ggs. DAUPHIN 19-88-004-715
 gs. OBJAT 19-30-299-413
 ggd. MELODIE 19-96-004-346
 Sire **CLOUGHHEAD FANTASTIC HCX10-692**
 ggs. HEROS 36-92-005-318
 gd. CLOUGHHEAD VALERIE HCX04-250
 ggd. CLOUGHHEAD FAVOURITE HCXF-031-FOT
 ggs. GOLDIES OSWALD GS98-064
 gs. HALFWAYWELL UNIVERSE BPT03-007
 ggd. BURTON ENCHANTRESS KAE-149
 Dam **CLOUGHHEAD BARBARA HCX06-431**
 ggs. JEROME 23-94-026-101
 gd. CLOUGHHEAD RAQUEL HCX00-028
 ggd. BROADMEADOWS JEMMA CAV94-008

Lot GL Hutton
38 CLOUGHHEAD HEARSAY
 HCX12-895 Born 01/09/12 UK101983/700895
 ggs. DAUPHIN 19-88-004-715
 gs. OBJAT 19-30-299-413
 ggd. MELODIE 19-96-004-346
 Sire **CLOUGHHEAD FANTASTIC HCX10-692**
 ggs. HEROS 36-92-005-318
 gd. CLOUGHHEAD VALERIE HCX04-250
 ggd. CLOUGHHEAD FAVOURITE HCXF-031-FOT
 ggs. OMAR 19-30-288-541
 gs. ULTRABIEN 36-15-024-031
 ggd. NOUNOU 36-97-009-250
 Dam **CLOUGHHEAD BAMBI HCX06-436**
 ggs. CLOUGHHEAD JURASSIC HCX94-131
 gd. CLOUGHHEAD ORRISSA HCX98-275
 ggd. CLOUGHHEAD JUNE HCX94-133

Lot 39 GL Hutton
CLOUGHHEAD HEROINE
 HCX12-896 Born 01/09/12 UK101983/100896
 ggs. DAUPHIN 19-88-004-715
 gs. OBJAT 19-30-299-413
 ggd. MELODIE 19-96-004-346
 Sire **CLOUGHHEAD FANTASTIC HCX10-692**
 ggs. HEROS 36-92-005-318
 gd. CLOUGHHEAD VALERIE HCX04-250
 ggd. CLOUGHHEAD FAVOURITE HCXF-031-FOT
 ggs. IDOLE 12-93-111-663
 gs. SAIGA 43-01-067-075
 ggd. LOLA 43-95-075-312
 Dam **CLOUGHHEAD UNISON HCX03-244**
 ggs. HEROS 36-92-005-318
 gd. CLOUGHHEAD JILL HCX94-093-FOT
 ggd. RUADH THELMA CAFT-003

Lot 40 GL Hutton
CLOUGHHEAD HOPE
 HCX12-900 Born 08/09/12 UK101983/500900
 ggs. OURSON 87-78-002-862
 gs. UTRILLO 19-31-859-900
 ggd. GENTILE 23-91-053-162
 Sire **DELICIEUX 19-33-426-585**
 ggs. MILOU 19-96-018-369
 gd. VIENOISE 19-32-055-935
 ggd. RAZZIA 19-30-688-834
 ggs. NESTOR 19-97-006-771
 gs. UGUES 19-31-558-775
 ggd. ECLIPSE 19-89-009-628
 Dam **CLOUGHHEAD BRITNEY HCX06-399**
 ggs. PETUNIA 87-00-670-240
 gd. CLOUGHHEAD SYLVIA HCX01-154
 ggd. CLOUGHHEAD NANCY HCX97-200

Lot 41 GL Hutton
CLOUGHHEAD HOLLY
 HCX12-902 Born 12/09/12 UK101983/700902
 ggs. LUC 87-75-001-764
 gs. OURSON 87-78-002-862
 ggd. EBLOUISSANTE 87-69-005-644
 Sire **UTRILLO 19-31-859-900**
 ggs. CONCERT 23-87-052-219
 gd. GENTILE 23-91-053-162
 ggd. USUELLE 23-83-051-972
 ggs. NESTOR 19-97-006-771
 gs. UGUES 19-31-558-775
 ggd. ECLIPSE 19-89-009-628
 Dam **CLOUGHHEAD DANIELLA HCX08-571**
 ggs. SOLEIL 19-31-107-866
 gd. CLOUGHHEAD VELVET HCX04-294
 ggd. CLOUGHHEAD MATILDA HCX96-186

Lot GL Hutton
42 CLOUGHHEAD HONEY
 HCX12-912 Born 26/10/12 UK101983/300912
 ggs. LUC 87-75-001-764
 gs. OURSON 87-78-002-862
 ggd. EBLOUISSANTE 87-69-005-644
 Sire **UTRILLO 19-31-859-900**
 ggs. CONCERT 23-87-052-219
 gd. GENTILE 23-91-053-162
 ggd. USUELLE 23-83-051-972
 ggs. PETUNIA 87-00-670-240
 gs. CLOUGHHEAD UMPIRE HCX03-221
 ggd. GASCOGNE 23-91-060-414
 Dam **CLOUGHHEAD APRIL HCX05-377**
 ggs. JEROME 23-94-026-101
 gd. CLOUGHHEAD PEPSI HCX99-721
 ggd. CLOUGHHEAD JANICE HCX94-121

Lot GL Hutton
43 CLOUGHHEAD HELLO
 HCX12-913 Born 28/10/12 UK101983/400913
 ggs. DAUPHIN 19-88-004-715
 gs. OBJAT 19-30-299-413
 ggd. MELODIE 19-96-004-346
 Sire **CLOUGHHEAD FANTASTIC HCX10-692**
 ggs. HEROS 36-92-005-318
 gd. CLOUGHHEAD VALERIE HCX04-250
 ggd. CLOUGHHEAD FAVOURITE HCXF-031-FOT
 ggs. OMAR 19-30-288-541
 gs. ULTRABIEN 36-15-024-031
 ggd. NOUNOU 36-97-009-250
 Dam **CLOUGHHEAD BESSIE HCX06-425**
 ggs. JEROME 23-94-026-101
 gd. CLOUGHHEAD PEARL HCX99-735
 ggd. GASCOGNE 23-91-060-414

Lot GL Hutton
44 CLOUGHHEAD HOSANNAH
 HCX12-917 Born 23/12/12 UK101983/100917
 ggs. DAUPHIN 19-88-004-715
 gs. OBJAT 19-30-299-413
 ggd. MELODIE 19-96-004-346
 Sire **CLOUGHHEAD FANTASTIC HCX10-692**
 ggs. HEROS 36-92-005-318
 gd. CLOUGHHEAD VALERIE HCX04-250
 ggd. CLOUGHHEAD FAVOURITE HCXF-031-FOT
 ggs. NESTOR 19-97-006-771
 gs. UGUES 19-31-558-775
 ggd. ECLIPSE 19-89-009-628
 Dam **CLOUGHHEAD ANNABELLE HCX05-347**
 ggs. PETUNIA 87-00-670-240
 gd. CLOUGHHEAD SYLVIA HCX01-154
 ggd. CLOUGHHEAD NANCY HCX97-200

semenstore.co.uk

quality limousin semen on-line

Semenstore is a practical one-stop Limousin semen shop for vendors and buyers. The Semenstore features:

On-line semen purchasing

Automated service

Payment collection

Professional marketing

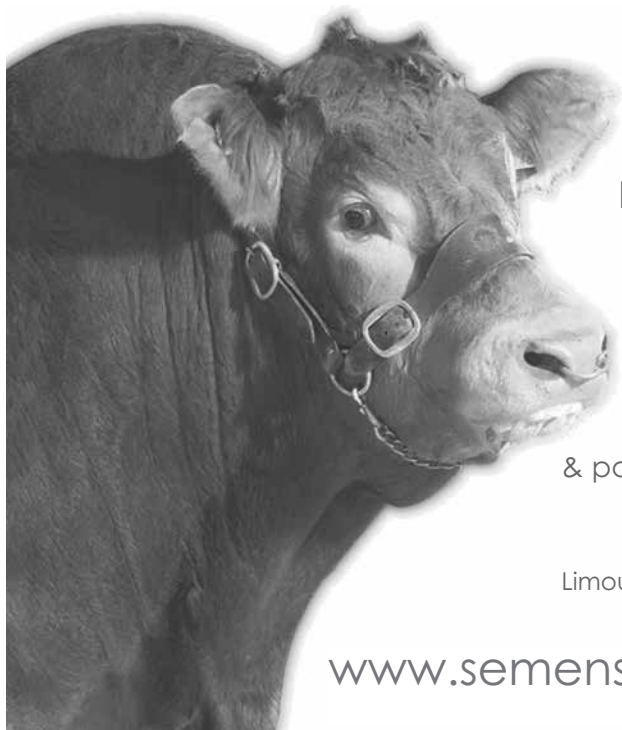
Semen for all markets

Export and domestic

Competitive pricing and costs

Unique offers & packages

One-stop Limousin semen shop



www.semenstore.co.uk

Lot Cruickshank Normande Limousin

45 NORMANDE HETTIE

CAX12-1049

Born 03/06/12

UK560770/701049

ggs. OURSON 87-78-002-862

gs. UTRILLO 19-31-859-900

ggd. GENTILE 23-91-053-162

Sire **BONAPARTE 19-32-696-224**

ggs. LOQUET 22-95-003-403

gd. NORIA 19-97-002-831

ggd. INGRID 19-93-002-045

ggs. NESTOR 19-97-013-433

gs. ARDNACRUSHA UTHMAN HRWU-254

ggd. LUSTRE PELL-141

Dam **NORMANDE BECKY CAX06-552**

ggs. ALDWYCK ORPHEUS BAM98-248

gd. NORMANDE UTILE CAX03-302

ggd. NORMANDE ILENE CAX93-015

Signet Recorded Weights	100	200	300	400	500			
Last BLUP'd 16/11/2013	132	0	0	0	0			
MLC	C E(%)	C V	200M(kg)	200G(kg)	400G(kg)	Fat(mm)	MD(mm)	BV
Data EBV	-3.4	LM0C	-2	+31	+48	+0.1	+3.1	LM+26
Acc %	43	41	38	57	58	47	54	57
BLCS Index	95	98	92	113	109	86	105	105

Service Details Ran from 1st December until sale day with ***ROUNDHILL HAMLET (IE241280241367)**.

NORMANDE HETTIE is a very good heifer and carries a good pedigree. Her sire, **Bonaparte**, is son of **Utrillo** - stock bull at Cloughhead (G.Hutton).

Lot I Handley

46 GUNNERFLEET HINY

HDR12-001

Born 01/01/12

UK125111/500613

ggs. LEO 23-95-071-399

gs. NENUPHAR 87-97-011-143

ggd. GIROFLEE 87-91-000-077

Sire ***DOLCORSELLWYN BRYNMOR VU06-012**

ggs. BROADMEADOWS CANNON CAVC-031

gd. DOLCORSELLWYN PATSI VU99-004

ggd. EMUE 23-89-050-709

ggs. DURANDAL 36-88-007-305

gs. HEROS 36-92-005-318

ggd. SIGIT 36-81-000-283

Dam **GUNNERFLEET CINDY HDR07-009-FOT**

ggs. BROADMEADOWS CANNON CAVC-031

gd. GUNNERFLEET LINY HDR95-009

ggd. GUNNERFLEET GENIE HDRG-003

Lot I Handley
47 GUNNERFLEET HELUNA
 HDR12-019 Born 22/03/12 UK125111/300632
 ggs. LEO 23-95-071-399
 gs. NENUPHAR 87-97-011-143
 ggd. GIROFLEE 87-91-000-077
 Sire ***DOLCORSLLWYN BRYNMOR VU06-012**
 ggs. BROADMEADOWS CANNON CAVC-031
 gd. DOLCORSLLWYN PATSI VU99-004
 ggd. EMUE 23-89-050-709
 ggs. DURANDAL 36-88-007-305
 gs. HEROS 36-92-005-318
 ggd. SIGIT 36-81-000-283
 Dam **GUNNERFLEET BELUNA HDR06-034**
 ggs. TUNNELBY MONKEYTRICKS TAP96-001
 gd. GUNNERFLEET REINE HDR00-010
 ggd. GUNNERFLEET LUNE HDR95-005-FOT

Lot I Handley
48 GUNNERFLEET HANTRESS
 HDR12-022 Born 11/05/12 UK125111/600635
 ggs. BROADMEADOWS VIP CAVV-024-FOT
 gs. BROADMEADOWS CANNON CAVC-031
 ggd. BROADMEADOWS AINSI CAVA-003
 Sire ***GUNNERFLEET EROS HDR09-052**
 ggs. GOLDIES TONY GS02-470
 gd. GUNNERFLEET BECIAN HDR06-039
 ggd. GUNNERFLEET UNECIAN HDR03-042
 ggs. DURANDAL 36-88-007-305
 gs. HEROS 36-92-005-318
 ggd. SIGIT 36-81-000-283
 Dam **GUNNERFLEET CHANTRESS HDR07-012**
 ggs. BROADMEADOWS CANNON CAVC-031
 gd. GUNNERFLEET SENCHANT HDR01-039
 ggd. BURTON ENCHANTRESS KAE-149

Lot I Handley
49 GUNNERFLEET HILUNA
 HDR12-033 Born 27/06/12 UK125111/300646
 ggs. BROADMEADOWS VIP CAVV-024-FOT
 gs. BROADMEADOWS CANNON CAVC-031
 ggd. BROADMEADOWS AINSI CAVA-003
 Sire ***GUNNERFLEET EROS HDR09-052**
 ggs. GOLDIES TONY GS02-470
 gd. GUNNERFLEET BECIAN HDR06-039
 ggd. GUNNERFLEET UNECIAN HDR03-042
 ggs. GLENROCK SPARTACUS IE01-152
 gs. GLENROCK VENTURA IE04-432
 ggd. GLENROCK SASPIRILLA IE01-148
 Dam **GUNNERFLEET CILUNA HDR07-019**
 ggs. TUNNELBY MONKEYTRICKS TAP96-001
 gd. GUNNERFLEET SUNA HDR01-014
 ggd. GUNNERFLEET LUNE HDR95-005-FOT

Signet Recorded Weights	100	200	300	400	500			
Last BLUP'd 16/11/2013	0	0	359	0	0			
MLC	C E(%)	C V	200M(kg)	200G(kg)	400G(kg)	Fat(mm)	MD(mm)	BV
Data EBV	-4.4	LM-1C	+1	+19	+34	-0.3	+3.9	LM+26
Acc %	51	56	40	56	55	38	51	59
BLCS Index	89	91	109	99	100	113	112	105

GUNNERFLEET CILUNA (*dam*) also bred **Gunnerfleet Exterminator** who won Supreme Champion at Skipton Sale.

Lot I Handley
50 GUNNERFLEET HILINY
 HDR12-042 Born 14/10/12 UK125111/500655
 ggs. LEO 23-95-071-399
 gs. NENUPHAR 87-97-011-143
 ggd. GIROFLEE 87-91-000-077
 Sire ***DOLCORSLLWYN BRYNMOR VU06-012**
 ggs. BROADMEADOWS CANNON CAVC-031
 gd. DOLCORSLLWYN PATSI VU99-004
 ggd. EMUE 23-89-050-709
 ggs. GLENROCK SPARTACUS IE01-152
 gs. GLENROCK VENTURA IE04-432
 ggd. GLENROCK SASPIRILLA IE01-148
 Dam **GUNNERFLEET ELINY HDR09-011**
 ggs. HEROS 36-92-005-318
 gd. GUNNERFLEET TINNY HDR02-047
 ggd. GUNNERFLEET LINY HDR95-009

Signet Recorded Weights	100	200	300	400	500			
Last BLUP'd 16/11/2013	174	312	0	0	0			
MLC	C E(%)	C V	200M(kg)	200G(kg)	400G(kg)	Fat(mm)	MD(mm)	BV
Data EBV	-4.3	LM-2C	+3	+18	+38	-0.3	+3.6	LM+30
Acc %	57	61	45	69	66	46	63	69
BLCS Index	90	87	120	98	102	113	110	112



GROUP OF COMPANIES

hhgroupplc.co.uk

**HARRISON & HETHERINGTON**

The UK's Leading Livestock Marketing Company

- UK's Leading Livestock Marketing Company
- Seven Sales Centres
- Pedigree & Commercial Livestock
- Professional Valuations
- Official Society Sales of Beef, Dairy and Sheep
- Tractors, machinery & Commercial Vehicles
- Specialist Livestock Sales, Equine & Events

T. 01228 406200 harrisonandhetherington.co.uk**MOTOR AUCTIONS**

Remarketing Vehicles

- Sales of up to 150 Motor Vehicles
- Cumbria's Leading Motor Auction House
- Auctions Held Every Tue & Fri
- 4 Wheel Drive Vehicle Sales
- Regular Sales of Ex-Council Plant & Equipment
- Commercial Vehicles Direct from National Lease Companies
- Thursday Evening Sales

T. 01228 590990 hmmotorauctions.com**AUCTION ROOMS**

Auctioneers & Valuers since 1890

- Antiques & Fine Art
- Jewellery, Watches, Clocks & Barometers
- Scientific & Musical Instruments
- Medals, Arms, Militaria, & Vintage Fishing Tackle
- Antiquarian Books, Autographs & Vintage Postcards
- Vintage & Retro Textiles & Costumes
- House Clearing Service
- Professional Valuations

T. 01228 406320 hhauctionrooms.co.uk**JAMES SUTHERLAND**

Asset Valuers & Auctioneers

- Online Auctioneering
- All types of Valuations
- Small Goods
- Cars, Vans & Trucks
- Heavy Goods
- Plant & Machinery
- Private Treaty Sales
- On-site Auction Sales

T. 0191 276 3443 js-bid.com**REEDS PRINTERS**

Quality Printing, Signs & Display

- Eye Catching Print
- Competitive Prices
- State-of-the-Art Printing Equipment
- Vehicle Graphics
- Outdoor Signage
- Exhibition Materials
- Environmentally Friendly

T. 01768 864214 hhreedsprinters.co.uk**LAND AND PROPERTY**

Chartered Surveyors

- Farm & Business Management
- Valuations & AMC Agents
- Planning & Development
- Rural Estate Management
- Property Sales & Marketing
- Landlord & Tenant
- Compulsory Purchase & Compensation
- Renewable Energy Services
- Conservation & Environment

T. 01228 406260 | 0191 370 8530 hhland.co.uk**KING**

Estate Agents, Lettings & Valuers

- Services for the Urban & Rural Property Markets
- Buyers and Sellers
- Landlords & Tenants
- Property Valuation
- Financial Services
- Experienced & Professional Staff Providing Impartial Advice across the Property Sector

T. 01228 810799 hkking.co.uk**INSURANCE BROKERS**

Rural & Commercial Insurance

- Farm Estate
- Farm Motor
- Livestock
- Personal Accident / Sickness
- Environmental Cover
- Commercial / Rural Trades
- Public Liability
- Agricultural Contractors

T. 01228 406290 hhinsurancebrokers.co.uk**BORDERWAY FINANCE**

Vehicle Finance Specialists

- Hire Purchase
- Lease Purchase
- Business Users
- Private Individuals
- Cars & Light Commercial Vehicles
- Quad Bikes & ATVs
- Motorhomes & Caravans
- Horseboxes & Trailers

T. 01228 595939 hhborderwayfinance.co.uk**First in the Field...**

Lot I Handley
51 GUNNERFLEET HELOCKET
 HDR12-047 Born 21/11/12 UK125111/300660
 ggs. LEO 23-95-071-399
 gs. NENUPHAR 87-97-011-143
 ggd. GIROFLEE 87-91-000-077
 Sire ***DOLCORSLLWYN BRYNMOR VU06-012**
 ggs. BROADMEADOWS CANNON CAVC-031
 gd. DOLCORSLLWYN PATSI VU99-004
 ggd. EMUE 23-89-050-709
 ggs. GLENROCK SPARTACUS IE01-152
 gs. GLENROCK VENTURA IE04-432
 ggd. GLENROCK SASPIRILLA IE01-148
 Dam **GUNNERFLEET ELOCKET HDR09-006**
 ggs. BROADMEADOWS CANNON CAVC-031
 gd. GUNNERFLEET BELOCKETT HDR06-012-FOT
 ggd. GUNNERFLEET LOCKETT HDR95-022-FOT

Lot I Handley
52 GUNNERFLEET HELUNE
 HDR12-052 Born 02/12/12 UK125111/100665
 ggs. LEO 23-95-071-399
 gs. NENUPHAR 87-97-011-143
 ggd. GIROFLEE 87-91-000-077
 Sire ***DOLCORSLLWYN BRYNMOR VU06-012**
 ggs. BROADMEADOWS CANNON CAVC-031
 gd. DOLCORSLLWYN PATSI VU99-004
 ggd. EMUE 23-89-050-709
 ggs. GLENROCK SPARTACUS IE01-152
 gs. GLENROCK VENTURA IE04-432
 ggd. GLENROCK SASPIRILLA IE01-148
 Dam **GUNNERFLEET ELUNE HDR09-054**
 ggs. HEROS 36-92-005-318
 gd. GUNNERFLEET BELUNA HDR06-034
 ggd. GUNNERFLEET REINE HDR00-010

Lot I Handley
53 GUNNERFLEET HUNA
 HDR12-054 Born 03/12/12 UK125111/300667
 ggs. LEO 23-95-071-399
 gs. NENUPHAR 87-97-011-143
 ggd. GIROFLEE 87-91-000-077
 Sire ***DOLCORSLLWYN BRYNMOR VU06-012**
 ggs. BROADMEADOWS CANNON CAVC-031
 gd. DOLCORSLLWYN PATSI VU99-004
 ggd. EMUE 23-89-050-709
 ggs. RONICK COSMOS DYC-051
 gs. TUNNELBY MONKEYTRICKS TAP96-001
 ggd. TUNNELBY FROLIC TAPF-002
 Dam **GUNNERFLEET SUNA HDR01-014**
 ggs. BROADMEADOWS CANNON CAVC-031
 gd. GUNNERFLEET LUNE HDR95-005-FOT
 ggd. BALLYBURTON UNA KVVU-003

Lot I Handley
54 GUNNERFLEET HENIE
 HDR12-060 Born 30/12/12 UK125111/200673
 ggs. LEO 23-95-071-399
 gs. NENUPHAR 87-97-011-143
 ggd. GIROFLEE 87-91-000-077
 Sire ***DOLCORSLLWYN BRYNMOR VU06-012**
 ggs. BROADMEADOWS CANNON CAVC-031
 gd. DOLCORSLLWYN PATSI VU99-004
 ggd. EMUE 23-89-050-709
 ggs. DURANDAL 36-88-007-305
 gs. HEROS 36-92-005-318
 ggd. SIGIT 36-81-000-283
 Dam **GUNNERFLEET CINDY HDR07-009-FOT**
 ggs. BROADMEADOWS CANNON CAVC-031
 gd. GUNNERFLEET LINY HDR95-009
 ggd. GUNNERFLEET GENIE HDRG-003

Lot I Handley
55 GUNNERFLEET ILOMEE
 HDR13-0682 Born 19/03/13 UK125111/400682
 ggs. WILODGE TONKA WEY02-002
 gs. WILODGE VANTASTIC WEY04-037
 ggd. RAVENELLE 23-51-224-583
 Sire **PLUMTREE FANTASTIC CQE10-023**
 ggs. SYMPA 48-01-006-969
 gd. BANKDALE AMBER WLJ05-095
 ggd. PRINCESSE 87-08-920-187
 ggs. CARTHORPE LOTUS RX95-307-FOT
 gs. FIELDSON OFFICER FCE98-312
 ggd. CAMPSMOUNT JILL CDV94-001
 Dam **GUNNERFLEET BELLOME HDR06-051**
 ggs. TUNNELBY MONKEYTRICKS TAP96-001
 gd. GUNNERFLEET SALOME HDR01-026
 ggd. GUNNERFLEET JACKIE HDR94-011

Lot PJ & E Henshall

56 RINGWAY HOPE

HCY12-960 Born 21/02/12 UK581823/100960 Got by AI
 ggs. OURSON 87-78-002-862
 gs. MOERO 19-96-002-648
 ggd. GENTILLE 23-91-053-162

Sire **SARKLEY VOLCANIC PBO04-027**

ggs. HEROS 36-92-005-318
 gd. SARKLEY SADIE PBO01-115
 ggd. SARKLEY MARTINI PBO96-059
 ggs. GUNNERFLEET PLUNAS HDR99-010
 gs. FIELDSON ALFY FCE05-384
 ggd. EDEN NATASHA HCS97-074

Dam **RINGWAY EUROPA HCY09-739**

ggs. COCKLESHELL OLYMPUS PB98-008
 gd. RINGWAY APHRODITE HCY05-451
 ggd. RINGWAY ULEMA HCY03-015

Signet Recorded Weights	100	200	300	400	500			
Last BLUP'd 16/11/2013	171	301	347	0	468			
MLC	C E(%)	C V	200M(kg)	200G(kg)	400G(kg)	Fat(mm)	MD(mm)	BV
Data EBV	-9.4	LM0C	+2	+42	+70	0	+5.7	LM+37
Acc %	59	66	44	71	67	50	64	70
BLCS Index	58	102	114	126	125	93	127	122

Lot PJ & E Henshall

57 RINGWAY HUSSY

HCY12-972 Born 14/05/12 UK581823/600972 Got by AI
 ggs. PABLO 12-99-079-969
 gs. URUGUAY 12-04-073-860
 ggd. SEMOULE 12-01-072-860

Sire ***BAHUT 87-53-841-575**

ggs. HATELET 19-92-000-842
 gd. NORVEGIENN 87-97-009-574
 ggd. TAQUINE 87-82-008-241
 ggs. FRAI 12-90-110-336
 gs. MANITOU 12-96-163-263
 ggd. FOUFOUNE 12-90-111-142

Dam **RINGWAY TOMBOY HCY02-035**

ggs. RONICK COSMOS DYC-051
 gd. RINGWAY LADY HCY95-009
 ggd. RINGWAY DUCHESS HCYD-004

Signet Recorded Weights	100	200	300	400	500			
Last BLUP'd 16/11/2013	154	256	0	449	468			
MLC	C E(%)	C V	200M(kg)	200G(kg)	400G(kg)	Fat(mm)	MD(mm)	BV
Data EBV	-3.7	LM-1C	-4	+30	+47	0	+2.8	LM+26
Acc %	64	71	48	76	75	65	74	76
BLCS Index	93	95	81	112	109	93	103	106

Are your calves getting the best start?

Boost immunity with First Thirst® colostrum. They deserve it!

“First Thirst IBR elite colostrum is religiously given to every pedigree calf within an hour of being born. This gives us the confidence that our future genetics have had the necessary antibodies they require and helps to protect our investment in top genetics”

Philip Halhead - Norbreck Genetics

First Thirst IBR elite - IBR antibody and virus free pure dried colostrum for elite calves destined for AI or export or born within high health status herds.

First Thirst Calf Fortifier Easy mixing colostrum supplement for improving Quantity and Quality of colostrum.

All calf Colostrums available within sachet, bucket or within our Perfect Udder® bags. Perfect Udder allows you to just add water, mix and feed via a screw on teat or tube.

First Thirst Lamb Easy mixing lamb colostrum supplement.

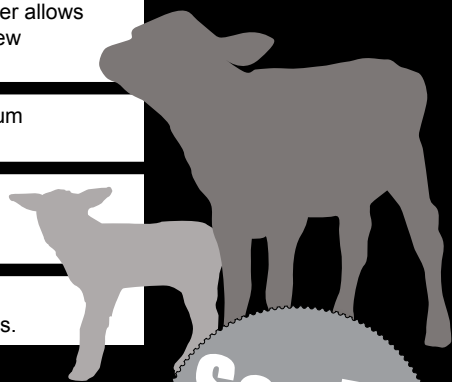
First Thirst SUPER LAMB Pure dried colostrum for Elite pedigree lambs. Nothing added & nothing taken out!

All colostrums made with the highest quality EU derived colostrum free of EBL and Johnes.

Website

www.gshepherd.co.uk

quality advice
& products



See Us
in the foyer
for more information



G ShepherdAnimal Health
Advice, Quality & Value

m: 07778 191964 t: 01772 690333

e: office@gshepherd.co.uk w: www.gshepherd.co.uk

Lot PJ & E Henshall

58 RINGWAY HILDA

HCY12-973

Born 16/05/12

UK581823/700973

Got by AI

ggs. OURSON 87-78-002-862

gs. MOERO 19-96-002-648

ggd. GENTILE 23-91-053-162

Sire SARKLEY VOLCANIC PBO04-027

ggs. HEROS 36-92-005-318

gd. SARKLEY SADIE PBO01-115

ggd. SARKLEY MARTINI PBO96-059

ggs. JACOT 36-94-005-555

gs. ROCKY 36-15-030-964

ggd. GLOIRE 36-91-002-380

Dam RINGWAY ESMERELDA HCY09-730

ggs. CLOUGHHEAD ROCKET HCX00-025

gd. RINGWAY AQUAMARINE HCY05-408

ggd. RINGWAY SAPPHIRE HCY01-024

Signet Recorded Weights	100	200	300	400	500			
Last BLUP'd 16/11/2013	144	254	0	441	477			
MLC	C E(%)	C V	200M(kg)	200G(kg)	400G(kg)	Fat(mm)	MD(mm)	BV
Data EBV	-2.8	LM+1C	-1	+29	+57	-0.1	+3.3	LM+31
Acc %	60	68	47	73	74	65	71	74
BLCS Index	99	106	98	111	116	99	107	113

Lot PJ & E Henshall

59 RINGWAY HEIRESS

HCY12-984

Born 23/05/12

UK581823/400984

ggs. OMISB 86-98-111-644

gs. TATAR B 86-02-132-763

ggd. NUIT B 86-97-111-955

Sire TEMPLEQUAIN BARNEY IE221241730617

ggs. SLEEDAGH SOLOMON SDHS-544

gd. ARDLEA UPEARL IE221064530400

ggd. JAVA 23-94-018-614

ggs. WILODGE TONKA WEY02-002

gs. WILODGE VANTASTIC WEY04-037

ggd. RAVENELLE 23-51-224-583

Dam RINGWAY DEESSE HCY08-640

ggs. NENUPHAR 87-97-011-143

gd. RINGWAY UHU HCY03-040

ggd. RINGWAY FERIDA HCYF-005

Signet Recorded Weights	100	200	300	400	500			
Last BLUP'd 16/11/2013	164	287	0	447	477			
MLC	C E(%)	C V	200M(kg)	200G(kg)	400G(kg)	Fat(mm)	MD(mm)	BV
Data EBV	-11.7	LM-5C	-2	+54	+76	+0.3	+7.6	LM+42
Acc %	61	60	44	74	74	67	72	73
BLCS Index	44	68	92	140	129	73	143	130

Lot PJ & E Henshall
60 RINGWAY HAYLEY
 HCY12-989 Born 27/05/12 UK581823/200989 Got by AI
 ggs. WILODGE TONKA WEY02-002
 gs. WILODGE VANTASTIC WEY04-037
 ggd. RAVENELLE 23-51-224-583

Sire *CARMORN COPILOT MCN07-038
 ggs. PELLETSTOWN KEN PELK-121
 gd. CARMORN PENNY MCN99-025
 ggd. CARMORN HELEN MCN92-002
 ggs. CLOUGHHEAD JURASSIC HCX94-131
 gs. CLOUGHHEAD ROCKET HCX00-025
 ggd. CLOUGHHEAD JILL HCX94-093-FOT

Dam RINGWAY BEATRICE HCY06-477
 ggs. RONICK COSMOS DYC-051
 gd. RINGWAY LAVINIA HCY95-004
 ggd. GRAHAMS ANTONIA GVA-042-FOT

Signet Recorded Weights	100	200	300	400	500			
Last BLUP'd 16/11/2013	134	238	0	405	469			
MLC	C E(%)	C V	200M(kg)	200G(kg)	400G(kg)	Fat(mm)	MD(mm)	BV
Data EBV	-3.7	LM-1C	0	+21	+34	-0.4	+3.4	LM+27
Acc %	65	70	53	75	75	69	74	76
BLCS Index	93	91	103	102	100	119	108	107

RINGWAY HAYLEY is a repeat mating which produced **Ewdenvale Delilah** the outstanding heifer of 2008. **Hayley** has a BV of LM+35 and has a very sweet nature.

Lot PJ & E Henshall
61 RINGWAY HENRIETTE
 HCY12-991 Born 01/06/12 UK581823/400991 Got by AI
 ggs. PABLO 12-99-079-969
 gs. URUGUAY 12-04-073-860
 ggd. SEMOULE 12-01-072-860

Sire *BAHUT 87-53-841-575
 ggs. HATELET 19-92-000-842
 gd. NORVEGIENN 87-97-009-574
 ggd. TAQUINE 87-82-008-241
 ggs. PETUNIA 87-00-670-240
 gs. CLOUGHHEAD UMPIRE HCX03-221
 ggd. GASCOGNE 23-91-060-414

Dam RINGWAY COLETTE HCY07-580
 ggs. CLOUGHHEAD ROCKET HCX00-025
 gd. RINGWAY UPSADAISY HCY03-043
 ggd. RINGWAY FERIDA HCYF-005

Signet Recorded Weights	100	200	300	400	500			
Last BLUP'd 16/11/2013	157	279	350	405	456			
MLC	C E(%)	C V	200M(kg)	200G(kg)	400G(kg)	Fat(mm)	MD(mm)	BV
Data EBV	-5.0	LM-1C	0	+30	+39	+0.3	+4.2	LM+24
Acc %	60	70	46	74	74	64	72	75
BLCS Index	85	90	103	112	103	73	115	102

Lot Stephen Wilde

62 EWDENVALE HARRIET

WLD12-318

Born 21/04/12

UK 120412/100318

Got by AI

ggs.

PABLO 12-99-079-969

gs. URUGUAY 12-04-073-860

ggd. SEMOULE 12-01-072-860

Sire ***BAHUT 87-53-841-575**

ggs. HATELET 19-92-000-842

gd. NORVEGIENN 87-97-009-574

ggd. TAQUINE 87-82-008-241

ggs. GREENSONS GIGOLO GATG-009

gs. GUNNERFLEET POSTURE HDR99-023

ggd. BURTON ENCHANTRESS KAE-149

Dam **EWDENVALE VERONICA WLD04-174**

ggs. MARTINET 19-96-004-629

gd. BAILEA RICHE JAG00-039

ggd. BAILEA NICHE JAG97-008

Signet Recorded Weights	100	200	300	400	500			
Last BLUP'd 16/11/2013	150	243	345	0	495			
MLC	C E(%)	C V	200M(kg)	200G(kg)	400G(kg)	Fat(mm)	MD(mm)	BV
Data EBV	-3.4	LM+1C	+2	+15	+30	+0.1	+1.6	LM+19
Acc %	60	68	43	72	68	39	64	71
BLCS Index	95	107	114	95	97	86	93	95

EWDENVALE HARRIET is a very good shapley heifer by **Bahut**. **Ewdenvale Veronica** (*dam*) is the best cow family from **Bailea Riche** with some outstanding daughters retained.

Lot Stephen Wilde

63 EWDENVALE HOLLY

WLD12-322

Born 25/08/12

UK 120412/500322

Got by AI

ggs.

HARICOT 22-92-003-011

gs. OCTOPUS 87-10-671-030

ggd. JUSTINE 87-94-005-984

Sire ***SYMPA 48-01-006-969**

ggs. GENIAL 87-91-002-491

gd. OPERETTE 48-98-133-040

ggd. LAVANDE 48-15-341-488

ggs. DENICHEUR 87-88-080-087

gs. GENUS HABITUS 87-92-000-978

ggd. VICTORIEUSE 87-84-004-356

Dam **EWDENVALE UNO WLD03-157**

ggs. GREENFIELD OZZY MZ98-537

gd. GREENFIELD ROB MZ00-002

ggd. GREENFIELD OBELISK MZ98-546

Signet Recorded Weights	100	200	300	400	500			
Last BLUP'd 16/11/2013	287	397	509					
MLC	104							
C E(%)	C V	200M(kg)	200G(kg)	400G(kg)	Fat(mm)	MD(mm)	BV	
Data EBV	-1.7	LM+1C	-2	+19	+30	-0.2	+2.4	LM+22
Acc %	65	69	61	68	70	54	63	69
BLCS Index	106	103	92	99	97	106	100	100

EWDENVALE HOLLY is another daughter of the great **Sympa**. She has a BV value of LM+22 and has a very quiet nature.

Lot 64 Stephen Wilde
EWDENVALE HAYLEY
 WLD12-323 Born 01/09/12 UK120412/600323 Got by AI
 ggs. VAURIEN 23-84-004-516
 gs. GENIAL 87-91-002-491
 ggd. BALINE 87-86-005-219
Sire *NECTAR 19-97-013-151
 ggs. DOMINO 19-88-001-780
 gd. FRINGANTE 19-90-002-509
 ggd. SAPHENE 60-81-018-006
 ggs. BROADMEADOWS CANNON CAVC-031
 gs. HALTCLIFFE HERCULES RP92-009
 ggd. HALTCLIFFE CORAL RPC-011
Dam WITHERSDALE SERENA WIK01-007
 ggs. MARNHULL HERCULES MES92-056
 gd. KIDSSNAPE NORA PAE97-084
 ggd. KIDSSNAPE HEATHER PAE92-024

Signet Recorded Weights	100	200	300	400	500			
Last BLUP'd 16/11/2013	146	0	330	428	526			
MLC	C E(%)	C V	200M(kg)	200G(kg)	400G(kg)	Fat(mm)	MD(mm)	BV
Data EBV	-6.6	LM-2C	0	+35	+58	0	+5.0	LM+35
Acc %	65	70	59	69	71	56	64	70
BLCS Index	75	85	103	118	116	93	121	120

EWDENVALE HAYLEY is a repeat mating which produced **Ewdenvale Delilah**, the outstanding heifer of 2008.

Lot 65 Stephen Wilde
EWDENVALE HESTER
 WLD12-327 Born 13/09/12 UK120412/300327 Got by AI
 ggs. CASSIS 40-88-028-055
 gs. NEUF 22-97-004-114
 ggd. JUNGLE 22-94-004-270
Sire *VAGABOND 24-24-484-782
 ggs. IDEM 87-73-016-040
 gd. NICHE 24-97-015-162
 ggd. ACTRICE 24-85-015-440
 ggs. BAMBINO 87-86-001-669
 gs. IONESCO 36-93-000-206
 ggd. COQUETTE 36-87-001-802
Dam EWDENVALE CANDY WLD07-220
 ggs. RYEDALE ORION DAC98-221
 gd. WITHERSDALE TARA WIK02-007
 ggd. LUMBYLAW OTTERBURN OA98-1048

Signet Recorded Weights	100	200	300	400	500			
Last BLUP'd 16/11/2013	165	0	307	430	527			
MLC	C E(%)	C V	200M(kg)	200G(kg)	400G(kg)	Fat(mm)	MD(mm)	BV
Data EBV	-2.2	LM-2C	+1	+42	+82	+0.1	+5.3	LM+48
Acc %	63	68	54	63	62	50	60	64
BLCS Index	103	87	109	126	133	86	124	139

EWDENVALE HESTER is a real gem by the outstanding **Vagabond**. **Ewdenvale Candy** (*dam*) is by **Ionesco** and out of **Withersdale Tara** mother of **Ewdenvale Falcon** who sold for 7000gns Carlisle Feb 2012. **Hester** has a top 1% BV LM+48.

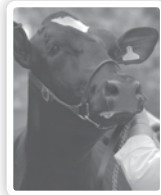
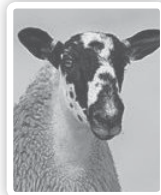


HARRISON & HETHERINGTON

Farmstock Auctioneers, Brokers & Valuers

The UK's Leading Livestock Marketing Company

- **Seven Sale Centres**
- **Pedigree & Commercial Livestock**
- **Official Society Sales of Beef, Dairy & Sheep**
- **Tractors, Machinery & Commercial Vehicles**
- **Specialist Livestock Sales, Equine & Events**
- **Professional Valuations**



Lot Stephen Wilde
66 EWDENVALE HONEY
 WLD12-329 Born 26/09/12 UK120412/500329 Got by AI
 ggs. HARICOT 22-92-003-011
 gs. OCTOPUS 87-10-671-030
 ggd. JUSTINE 87-94-005-984

Sire ***SYMPA 48-01-006-969**
 ggs. GENIAL 87-91-002-491
 gd. OPERETTE 48-98-133-040
 ggd. LAVANDE 48-15-341-488
 ggs. CLOUGHHEAD LORD HCX95-142
 gs. KYPE ORKNEY CAQ98-020
 ggd. KYPE GLENNA CAQG-001

Dam **EWDENVALE BETTY WLD06-201**
 ggs. GENUS HABITUS 87-92-000-978
 gd. EWDENVALE UNO WLD03-157
 ggd. GREENFIELD ROB MZ00-002

Signet Recorded Weights	100	200	300	400	500			
Last BLUP'd 16/11/2013	147	0	344	454	0			
MLC	C E(%)	C V	200M(kg)	200G(kg)	400G(kg)	Fat(mm)	MD(mm)	BV
Data EBV	-3.6	LM-1C	-1	+33	+52	-0.2	+4.5	LM+35
Acc %	65	69	60	64	64	56	62	65
BLCS Index	94	89	98	116	112	106	117	119

EWDENVALE HONEY is by the great **Sympa** with **Kype Orkney** on the dam line. **Honey** has a BV of +35.

Lot Stephen Wilde
67 EWDENVALE HELEN
 WLD12-330 Born 29/09/12 UK120412/600330
 ggs. OXYGENE 12-98-171-453
 gs. WILODGE TONKA WEY02-002
 ggd. WILODGE MECLAIRE WEY96-022

Sire **EWDENVALE EVEREST WLD09-254**
 ggs. RYEDALE ORION DAC98-221
 gd. WITHERSDALE TARA WIK02-007
 ggd. LUMBYLAW OTTERBURN OA98-1048
 ggs. GREENSONS GIGOLO GATG-009
 gs. GUNNERFLEET POSTURE HDR99-023
 ggd. BURTON ENCHANTRESS KAE-149

Dam **EWDENVALE VAL WLD04-172**
 ggs. MYTHE 87-96-006-263
 gd. BAILEA ROSEPETAL JAG00-064
 ggd. BAILEA IMPEY JAG93-034

Signet Recorded Weights	100	200	300	400	500			
Last BLUP'd 16/11/2013	151	0	352	452	0			
MLC	C E(%)	C V	200M(kg)	200G(kg)	400G(kg)	Fat(mm)	MD(mm)	BV
Data EBV	-0.3	LM+3C	+1	+21	+49	-0.2	+2.6	LM+26
Acc %	56	54	45	54	53	35	49	55
BLCS Index	114	120	109	102	110	106	101	106

EWDENVALE HELEN is by the herds stock bull **Ewdenvale Everest** who is by **Wilodge Tonka** with **Greensons Gigo** on the dam line.

Lot A Renton & HSB Redden Partners

70 MEADOWRIG GRACE

RLA11-001

Born 08/10/11

UK564413/100027

ggs. NESTOR 19-97-006-771

gs. RAMSES 19-30-818-375

ggd. MELODIE 19-96-008-093

Sire RATHKEELAND DYLAN CBL08-004

ggs. ORLY 16-98-121-061

gd. LAKE ABBIGAIL IE131636230423

ggd. LAKE RHONDA IE131636240192

ggs. NENUPHAR 87-97-011-143

gs. NEBO VIKING TFQ04-010

ggd. NEBO ROBERTA TFQ00-002

Dam IRONSTONE CINDERELLA SDS07-072

ggs. JOCKEY 19-94-006-256

gd. TWEEDSIDE SELMA MOT01-004

ggd. RONICK LYRIC DY95-078

Signet Recorded Weights	100	200	300	400	500			
Last BLUP'd 16/11/2013	184	359	339	436	548			
MLC	C E(%)	C V	200M(kg)	200G(kg)	400G(kg)	Fat(mm)	MD(mm)	BV
Data EBV	-5.2	LM+1C	+1	+45	+60	+0.4	+5.1	LM+27
Acc %	53	52	43	72	74	48	63	71
BLCS Index	84	107	109	130	118	66	122	108

Service Details Ran from 15th November until 30th December with ***FESTIVAL (19-34-079-179)**.

IRONSTONE CINDERELLA (dam) was Interbreed Beef Champion 2013 Northumberland Show and won numerous Championships during the summer. **Meadowrig Grace** sells in calf to **Festival** whose first son also out of **Cinderella** sold for 6,500gns.

Lot A Renton & HSB Redden Partners

71 MEADOWRIG ISLA

RLA13-001

Born 02/03/13

UK564413/500045

ggs. OBJAT 19-30-299-413

gs. CELESTIN 19-32-909-846

ggd. VOYELLE 19-32-179-624

Sire *FESTIVAL 19-34-079-179

ggs. NECTAR 19-97-013-151

gd. BECASSINE 19-32-638-578

ggd. PALOMA 19-30-547-577

ggs. TIRFONDROU 02-00-801-648

gs. BIBI 55-00-807-931

ggd. RAINETTE 55-00-304-373

Dam FACETIE 48-11-017-624

ggs. NENUPHAR 87-97-011-143

gd. APERETTE 48-06-027-222

ggd. UPERETTE 48-03-017-086

Signet Recorded Weights	100	200	300	400	500			
Last BLUP'd 16/11/2013	165	249	0	0	0			
MLC	C E(%)	C V	200M(kg)	200G(kg)	400G(kg)	Fat(mm)	MD(mm)	BV
Data EBV	-3.5	LM-2C	-1	+19	+38	-0.3	+2.3	LM+26
Acc %	32	37	28	66	63	28	54	64
BLCS Index	95	89	98	99	102	113	99	105

MEADOWRIG ISLA is the only UK registered direct female descendant of **Sympa's** dam **Operette**. She is a lovely young heifer with great potential.

Lot A Renton & HSB Redden Partners

72 MEADOWRIG IONA

RLA13-002

Born 03/03/13

UK564413/600046

ggs. OBJAT 19-30-299-413

gs. CELESTIN 19-32-909-846

ggd. VOYELLE 19-32-179-624

Sire *FESTIVAL 19-34-079-179

ggs. NECTAR 19-97-013-151

gd. BECASSINE 19-32-638-578

ggd. PALOMA 19-30-547-577

ggs. WILODGE TONKA WEY02-002

gs. WILODGE CERBERUS WEY07-010

ggd. WILODGE PRICELESS WEY99-032

Dam BROCKHURST FIDGET MFX10-216

ggs. ADOUR 19-32-049-611

gd. CASTILLE 19-32-925-266

ggd. ROMANCE 19-30-708-783

Signet Recorded Weights	100	200	300	400	500				
Last BLUP'd 16/11/2013	155	237	0	0	0				
MLC	C E(%)	C V	200M(kg)	200G(kg)	400G(kg)	Fat(mm)	MD(mm)	BV	
Data EBV	-3.5	LM-1C	-1	+18	+36	-0.3	+2.8	LM+26	
Acc %	41	47	33	68	64	35	57	65	
BLCS Index	95	95	98	98	101	113	103	105	

MEADOWRIG IONA is one of the first daughters offered by Meadowrig to be sired by **Festival**. She is a lovely heifer with a pedigree packed with some of the breeding greats: **Omer, Ludo, Cerberus, Objat** and **Nectar**.

Lot Mark Phillips

73 FFLUR ENFYs

GGF09-374

Born 11/05/09

UK742846/600374

Got by AI

Bred by G Griffiths & R John, Brynhelig, St Clears, Carmarthen, SA33 4NF

ggs. ROMEO 87-80-005-214

gs. DAUPHIN 19-88-004-715

ggd. OMBRETTE 19-78-003-500

Sire *OBJAT 19-30-299-413

ggs. DELTA 19-88-001-432

gd. MELODIE 19-96-004-346

ggd. AMELIE 19-01-362-333

ggs. GRAHAMS PONCHO GV99-046

gs. GRAHAMS UNBEATABLE GV03-176

ggd. HABITUDE 23-92-013-639

Dam FFLUR BUDDUG GGF06-280

ggs. MARRON 36-96-018-225

gd. BAILEA STARRY JAG01-057

ggd. BAILEA IMPEY JAG93-034

Service Details Ran from 1st May until 24th August with *DERRIAGHY HITACHI (GGU12-1033).

Calving Record 1 02/04/2013 M

FFLUR ENFYs is a lovely young cow sired by the noted **Objat**, she has inherited his super muscle and shape combined with a super temperament. **Enfys** last bull calf was sold to a commercial breeder at 7 months old, he had extreme shape and muscle.

EBVs improve profitability

In recent trials bulls with superior Estimated Breeding Values (EBVs) were worth an extra:

- **£42/calf** – Harper Adams, 2012, Aberdeen Angus
- **£45/calf** – Teagasc, 2009, Mixed Sires
- **£35/calf** – Dovecote Park, 2008, Hereford
- **£45/calf** – Harper Adams, 2007, Limousin

EBVs are for everyone



Store calf producer

Easier calving and better conformation store calves



Self contained herd

Easier calving, more productive cows and faster growing calves



Finisher

Faster growth rates with superior carcase conformation



EBVs at your finger tips



For information on EBVs and Genetic Improvement
contact EBLEX Better Returns Programme
Tel: 0870 241 8829 Email: brp@eblex.ahdb.org.uk



FORTHCOMING LIMOUSIN SALES 2014

(within Borderway Mart, Carlisle, unless otherwise stated)

Friday 28th March

Dispersal Sale of the Cowporation Herd

on behalf of Cowporation BV, Holland

Friday 2nd & Saturday 3rd May

Annual May Show and Sale of Bulls and Females

(entries close Friday 14th March)

Thursday 15th May

North West Midlands & North Wales Cattle Breeders Club

Annual Spring Show & Sale of Bulls and Females

at Welshpool Livestock Market (in conjunction with Welshpool Livestock Sales)

Saturday 17th May

**North West Cattle Breeders Club Special Spring Show & Sale
of Bulls and Females**

Saturday 31st May

Annual Sale from the **Haltcliffe Herd** for Messrs Ridley,
and from the **Goldies Herd** for B Goldie.

Guest Consignments from the **Lodge Herd** for W & A Callion,
from the **Netherhall Herd** for D & M Kelly,
from the **Trueman Herd** for H Savage & Sons,
from the **Tweeddale Herd** for J Watson.

Friday 13th June

Annual Summer Sale of Bulls & Youngstock

(entries close Monday 5th May)

Also Annual Breeders Sale of Females

Friday 4th July

Summer Sale from the

Whinfellpark Herd for Messrs Jenkinson, from the **Grahams Herd**
for R & J Graham from the **Norman Herd** for E & E Norman,
plus other consignments.

Friday 17th & Saturday 18th October

Annual Autumn Show and Sale of Bulls

(entries close Friday 29th August)

Friday 12th December

Red Ladies Derby & Weaned Calf Show & Sale

(entries close Friday 7th November)

Alphabetical Bull Index

(All bulls marked * in the pedigrees are included in the reference)

AMPERTAINE COMMANDER (MGO07-046) sire – Glenrock Ventura, dam – Ampertaine Annabella (by Sympa). Commander was Champion Carlisle May 2009 (joint top price). Carries extreme muscle (eye muscle depth 104mm). Judged Best Bull and Progeny North East Club Herd Competition (by Roger Hazard, Mereside herd). Progeny includes Barrons Fantastic 7,800gns Carlisle Weaned Calf Sale Dec 2010. Culnagechan Falcon 48,000gns Carlisle May 2012. Sarkley Galisa 4,000gns Sarkley Sale Oct 2012. Two calves shown locally, one Champion, one reserve Champion. Calves shown Tullamore National Show, Ardlea Coillte All Ireland 2010 born heifer calf. Newtown Gentleman All Ireland 2011 born bull calf and he went on to win Junior Male Champion. Commander is easy calving, ideal for heifers. Other progeny includes Barrons Harness 6,000gns Weaned Calf sale Carlisle Dec 2012. Goldies Imagination 12,000gns Carlisle May 2013. Barrons Indiana 5,200gns Carlisle Weaned Calf Sale Dec 2013.

BAHUT (87-53-841-575) sire – Uruguay, dam – Norvegienn (by Hatelet). Espoir Champion French National Show 2010 & Muscle Champion, Brive Show 2010. Breeding exceptionally square progeny.

BREMORE ARTIST (IE171088870160) sire – Nenuphar, dam – Samba (by Obligeant). Progeny includes Glenrock Dictator 10,000gns Carlisle Oct 2009. Glenrock Fandango 10,000gns Carlisle May 2012. Ballynahone Gigolo 8,000gns Carlisle May 2013.

CARMORN COPILOT (MCN07-038) sire – Wilodge Vantastic, dam – Carmorn Penny (by Pelletstown Ken). Progeny includes Culnagechan Fantastic 13,000gns Carlisle Feb 2012. Culnagechan Hawkeye 12,000gns Carlisle Oct 2013.

CLOUGHHEAD UMPIRE (HCX03-221) sire – Petunia, dam – Gascogne (by Espagnol). Umpire was purchased for 42,000gns Feb 2005 to join the Haltcliffe herd. Umpire has made a considerable mark in both the Haltcliffe herd and as an AI sire used heavily in the British Limousin herdbook. Progeny includes – Hafodlas Cymro (aged 11 months) 6,200gns Carlisle Weaned Calf Sale Dec 2007; Haltcliffe Brazil Junior & Reserve Overall Champion 22,000gns Carlisle Feb 2008 and joined the Raysonhall Herd, Haltcliffe Bentley 7,500gns Carlisle Feb 2008. Seven sons sold Carlisle Feb 2008 to average £8,039. Haltcliffe Braveheart Reserve Junior Champion sold for half share for 25,000gns Carlisle May 2008, Haltcliffe Chico 15,000gns Carlisle May 2008, Culnagechan Bandit 7,000gns Carlisle May 2008, Overthwaite Crackerjack 16,000gns, Homebyres Consort 10,000gns, Overthwaite Count 8,200gns Carlisle Feb 2009. Burndale Cyclone 14,000gns Carlisle May 2009. Pembroke Delboy 14,000gns Carlisle Oct 2009. Haltcliffe DJ 72,000gns & Overall Male Champion, Plumtree Deus 35,000gns Carlisle Feb 2010. Haltcliffe Dynasty 28,000gns Haltcliffe Sale May 2010. Haltcliffe Dollar 6,500gns, Haltcliffe Delia 5,500gns, Haltcliffe Duet 5,000gns, Haltcliffe Doreen 5,000gns Haltcliffe Sale May 2010. Myfyrion Exit 11,000gns, Haltcliffe Eureka 7,500gns & Haltcliffe Enzo 7,500gns Carlisle Oct 2010. Haltcliffe Exocet 8,500gns, Haltcliffe Egidius 8,000gns Carlisle Feb 2011. Haltcliffe Flower 15,000gns, Haltcliffe Fyne 10,000gns Haltcliffe Sale July 2011. Plumtree Filbert 14,000gns Carlisle Feb 2012. Haltcliffe Fencer 18,000gns and Haltcliffe George 10,000gns Carlisle May 2012. Haltcliffe Franc 7,000gns, Haltcliffe Groovy 7,000gns, Haltcliffe Glee 5,500gns & Haltcliffe Garland 5,000gns Carlisle June 2012. Beachmount Goodgirl 5,500gns Red Ladies Derby Carlisle Dec 2012. Gorrycam Hazzard 26,000gns Carlisle May 2013. Haltcliffe Gulf 6,000gns Carlisle June 2013. Gorrycam Hunter Reserve Junior Champion ans sold for 28,000gns Carlisle Oct 2013

DERRIAGHY HITACHI (GGU12-1033) sire – Derriaghy Enfield, dam – Derriaghy Ellie (by Haltcliffe Vermont). He is a son of the 22,000gns Derriaghy Enfield and son of a Carmorn Penny daughter.

DOLCORSLWYN BRYNMOR (VU06-012) sire – Nenuphar, dam – Dolcorsslwyn Patsi (by Broadmeadows Cannon). Sold for 32,000gns Carlisle Feb 2008. Progeny includes Gunnerfleet Felix 11,500gns & Gunnerfleet Fanfare 8,000gns Carlisle Feb 2012

FESTIVAL (19-34-079-179) sire – Celestin, dam – Becassine (by Nectar). First son sold for 6500gns.

FIELDSON ALFY (FCE05-384) sire – Gunnerfleet Plunas, dam – Eden Natasha (by Broadmeadows Cannon). Sold for 37,000gns Carlisle Oct 2006. Progeny includes Sarkley Dynamic 13,000gns, Kype Denver 8,000gns Carlisle Oct 2009. Sarkley Dalola 25,000gns Sarkley Youngstock Sale Nov 2009. Ringway Daphne 13,000gns Red Ladies Derby 2009. Netherhall Doubleseven 20,000gns, Netherhall Dangermouse 8,000gns Carlisle May 2010. Glenrock Eagle 10,000gns Carlisle Feb 2011. Netherhall Ferry 10,000gns, Proctors Explosive 8,000gns Carlisle May 2011. Dolcorsslwyn Fabio Sold for a new World and Breed record price animal sold for 120,000gns Carlisle Feb 2012 to M/s Jenkinson, Whinfell Park Herd.

GALBALLY (C458) sire – Neuf, dam – Galbally U251 (by Moreo). Reserve Senior Champion Roscrea 2009. He has a Beef Value of LM+30. He is a very easy calving, and has been used extensively on commercial heifers, within the Maybe herd.

GUNNERFLEET EROS (HDR09-052) sire – Broadmeadows Cannon, dam – Gunnerfleet Becian (by Goldies Tony). Sold for 24,000gns at Carlisle. His first sold for £8000.

MERESIDE GOLDOLPHIN (HCG11-424) sire – Plumtree Deus, dam – Mereside Dawnmarie (by Alaska). Godolphin won best bull calf award East Midlands her competition 2012. Judged by Brian Jones. Top price bull May Sale 2013 of 40,000gns. He was judged to be best stock bull North East her competition 2013 judged by Eric Norman.

NECTAR (19-97-013-151) sire – Imprt Genial, dam – Fringante (by Domino). Progeny includes Dyfri Casanova 10,000gns Carlisle May 2009. Dyfri Dolig 7,500gns Carlisle May 2010. Bankdale Anneka 5,000gns Bankdale dispersal sale Carlisle July 11.

NETHERALL EPIC (KCI09-014) sire – Sympa, dam – Montgomery Vixon (by Lasso). Has a Beef Value of LM+49 placing him in the top 10 Basco sires list. An easy calving bull which has been used extensively on commercial heifers, within the Maybe herd.

OBJAT (19-30-299-413) sire – Dauphin, dam – Melodie (by Delta). Sire of the Dolcersllwyn Ceridwen sold for 4,000gns Red Ladies Derby 2008, 7,500gns Fieldson Calypso and Beulah Coca Cola 14,000gns Carlisle Feb 2009. Sarkley Cossack 10,500gns, Cowin Destiny 8,000gns, Hollingreave Dandy 7,500gns Carlisle Oct 2009. Cloughhead China 4,500gns Carlisle Feb 2010. Cloughhead Ernie 34,000gns, Nebo Edgar 16,000gns, Bailea Denby 9,500gns Carlisle May 2010. Hudscales Earl 4,500gns Carlisle Youngstock sale May 2010. Lowerfrydd Empire 30,000gns & Overall Champion Carlisle Oct 2010. Wellhouse Elm 13,500gns, Hackney Email 10,000gns & Scorbora Enigma 9,000gns Carlisle Oct 2010. Beulah Eco 8,000gns Carlisle May 2011. Millington Ferrari 10,000gns, Gritstone Firecracker 8,000gns Carlisle Oct 2011. Beulah Fivestar 10,000gns Carlisle Feb 2012. Wilodge Formulaone 9,700gns Carlisle May 2012. Wilodge Flawless 27,000gns Carlisle June 2012. Dinmore Hottie 6,500gns Red Ladies Derby Carlisle Dec 2013. Trueman Harmonice 5,000gns Red Ladies Derby Carlisle Dec 2013.

ROUNDHILL HAMLET (IE241280241367) sire – Acajou, dam – Roundhill Egiriflee (by Mas Du Clo) – Hamlet is a son of Acajou one of the top bulls in France a different pedigree.

SYMPA (48-01-006-969) sire – Octopus, dam – Operette (by Imprt Genial) (Beef Value - LM+41) she won in-calf heifer class National Show in France September 2000. Sympa's progeny includes Haltcliffe Ullswater 43,000gns (second highest price for a Limousin bull), Haltcliffe Underwriter 10,000gns. His heifers are show winners with Haltcliffe Upperty Junior Female Champion & Reserve Female Champion ILC Show August 2004. Carlisle Oct 2004 Haltcliffe Ulex – 9,500gns, Carlisle Feb 2005 Haltcliffe Ulsterprice 5,800gns, Haltcliffe Uncle 7,200gns and Haltcliffe Undercover 6,200gns. Carlisle May 2005 Haltcliffe Vancouver 8,500gns. Carlisle Oct 2005 – Three son's winners of the Carlisle Three averaged 13,166gns. Haltcliffe Volvo – Res Champion 14,000gns, Haltcliffe Vannistelrooy 13,000gns and Haltcliffe Viper 12,500gns. Carlisle May 2006 – Haltcliffe Veto 6,500gns. Carlisle Oct 2006 – Haltcliffe Ace 10,000gns Reserve Champion; Overthwaite Affluent 10,000gns Junior Champion. Carlisle Feb 2007 – Ampertaine Abracadabra 29,000gns Reserve Junior Champion; Haltcliffe Anzac 11,000gns and Homebyres Albert 9,000gns. Carlisle May 2007- Haltcliffe Bravo Reserve Senior Champion 19,000gns, Haltcliffe Ben 14,000gns, Haltcliffe Bill 10,000gns, Haltcliffe Ambassador 11,500gns, Haltcliffe Argent 8,800gns. Carlisle Nov 2007 – Haltcliffe Banker 30,000gns, Ampertaine Bravo Supreme Champion 24,000gns, Burndale Blizzard 9,000gns, Haltcliffe Brandy 6,500gns, Haltcliffe Blaze 6,000gns. Carlisle Feb 2008 – Overthwaite Bridge 10,000gns, Overthwaite Ben 10,000gns, Haltcliffe Uldale dam of Haltcliffe Brazil 22,000gns, Rahoney Bartimaus 7000gns Carlisle May 2008, Ampertaine Bailey 7000gns Carlisle May 2008. Haltcliffe Conquer 20,000gns & Overall Champion Carlisle May 2009. Haltcliffe Cyclone 10,500gns and Overthwaite Chartered 12,000gns. Sandhills Diablo 8,000gns and Netherhall Desmond Reserve Junior Champion selling for 8,500gns Carlisle May 2009. Ampertaine Director 15,000gns, Ampertaine Dictator 8,500gns, Haltcliffe Darius 8,000gns Carlisle Oct 2009. Hazelhead Cuckoo 6,200gns Hazelhead Dispersal Oct 2009. Melbreak Dazzle 8,000gns & Trueman Duet 38,000gns & Champion Red Ladies Derby 2009. Gorryan Diarra 18,000gns, Tweeddale Donald 8,500gns Carlisle Feb 2010. Millgate Derry 20,000gns, Netherhall Epic 12,000gns Tweeddale Daimler 10,000gns, Claragh Domino 10,000gns & Haltcliffe Dram 7,800gns Carlisle May 2010. Haltcliffe Dulcie 6,500gns Haltcliffe Sale May 2010. Aghadolgan Emperor 17,000gns, Tomschoice Earl 10,000gns, Haltcliffe Echo 9,500gns & Stotsfold Edward 9,000gns Carlisle Oct 2010. Queenshead Evra 8,000gns Carlisle Feb 2011. Bankdale Alice 15,000gns Bankdale dispersal sale Carlisle July 2011. Haltcliffe Envy 5,000gns, Haltcliffe Epsom 15,000gns, Haltcliffe Fay 5,000gns Haltcliffe Sale July 2011. Pabo Francis 13,500gns Carlisle Oct 2011. Rombalds Elsie 7,500gns Rombalds Sale Carlisle Oct 2011. Baileys Countess 8,100gns Newmarques Sale Carlisle Oct 2011. Haltcliffe Febe 6,000gns Carlisle June 2012. Kaprico Germander 10,000gns Carlisle Oct 2012. Sportsmans Gigolo 8,000gns Carlisle May 2013. Goldies Heavenly 5,200gns Carlisle June 2013. Withersdale Reserve Supreme Champion, selling for 17,000gns and Ampertaine Hallmark 11,000gns Carlisle Oct 2013. Dylans Imbru 4,800gns Carlisle Weaned Calf Sale Dec 2013. Emslies Guerlain 16,500gns at Emslies Sassy Lassies Sale Jan 2014.

VAGABOND (24-24-484-782) sire – Neuf, dam – Niche (By Idem) Progeny includes Greenwell Caspian 12,000gns Carlisle Feb 2009, Greenwell Dreamboy 27,000gns Carlisle Oct 2009. Greenwell Etiquette (12months Old) 4,500gns Carlisle May 2010. Greenwell Cynthia 7,200gns & Greenwell Crystal 6,000gns Greenwell Dispersal Aug 2010. Westpit Fendt 15,500gns Carlisle Feb 2012. Greenwell Fabian 8,000gns Carlisle Feb 2012

**HEALTH AND SAFETY RULES
HARRISON & HETHERINGTON LIMITED
NOTICE TO ALL VISITORS AND TRADERS
PLEASE READ AND OBSERVE
THE FOLLOWING**

All visitors and traders on site will be responsible for ensuring that they and their employees or sub-contractors engaged by them comply with all legal requirements, including the Health and Safety At Work etc., Act 1974, The Management of Health and Safety At Work Regulations, The Provision And Use of Work Equipment Regulations, etc.

All visitors and traders will be responsible for ensuring that their operations in no way affect the integrity of the company or its fire, safety or security arrangements and in no way compromise the health and safety and welfare of other visitors to and or employees of Harrison & Hetherington.

Although it is the visitors and traders responsibility to ensure that plant, equipment and systems in work are safe, Harrison & Hetherington Limited reserve the right to ask any visitor or trader to leave the market for any breaches in the Health and Safety Rules and/or Regulations.

Vendors must inform Harrison & Hetherington Limited of any livestock due to attend the market whose temperament, behaviour or condition may call for additional precautions for its safe handling.

When loading or unloading livestock handlers must ensure that the dock and vehicle gates are securely fixed so as to prevent the escape of animals.

Traders are responsible for providing and maintaining suitable livestock handling equipment. They should ensure that livestock handlers are fit, experienced in livestock handling and familiar with the livestock in their charge.

Children must not be permitted in any area where they may be at risk from livestock or machinery.

In the case of bulls, during the period when the show/sale is open to visitors, bulls in stalls or pens should not be left unattended. If the handler is temporarily absent, arrangements should be made with another vendor, steward or member of Harrison & Hetherington staff to oversee the bull until the handler returns.

Handling of Livestock at shows and sales: Harrison & Hetherington Limited recommend that an adult person should accompany any junior person during the showing/sale of livestock in the ring and reserves the right to intervene at any point if, in the company's opinion, the person showing the livestock is at risk in undertaking that activity.

Passageways must be kept clear at all times during the auction sale. PLEASE DO NOT STAND IN THE SALE RING ENTRANCE AND EXIT PASSAGES.

The auction ring man escapes and refuges must be kept clear at all times.

All portable electrical equipment supplied and/or used by visitors and traders must be safe and fit for the purpose and should have a valid portable appliance test certificate.

AUCTIONEER'S TERMS & CONDITIONS OF SALE

(Incorporating the Auctioneer's
Terms and Conditions)

1. The biddings to be regulated by the Auctioneers and the highest bidder, subject to the Vendor's reserve (if any), to be the purchaser. No bid shall be retracted and if any dispute should arise between two or more bidders, the Lot in dispute to be put up again and resold, or the Auctioneers may determine the dispute at their own discretion and their decision shall be final. The Auctioneers reserve the right to refuse the bid of any person without being called upon to give reason for such action.
2. The Purchaser to give his full name and dwelling place and pay for all Lots purchased immediately at the close of sale. No Lot or Lots shall be removed from the sale premises until paid for and a pass-out slip obtained from the Auctioneer's clerk but each and every Lot shall immediately at the fall of the hammer be considered as delivered and be and remain in every respect at the absolute risk and expense of the respective purchaser or purchasers thereof and shall be removed from the sale premises at the purchaser's expense. The right of property shall not pass until the full purchase price is paid.
3. Purchasers paying by cheque must be prepared, if required, to produce a banker's reference. As a result of the Money Laundering Regulations (2003) the auctioneers are unable to accept cash payments in excess of nine thousand pounds sterling for any single or linked purchase transaction.
4. All statements in the catalogue, or made by the Auctioneers at the time of sale, also the correct identification of the animals, are the entire responsibility of the Vendors. The Auctioneers take no personal responsibility for the correctness of such statements or identities.
5. All statements in the catalogue, or any made by the Auctioneers at the time of sale relating to any veterinary or other tests are to be taken as statements of fact only. No such statements shall guarantee the purchaser of any animal against loss arising from the subsequent reaction of such animal to any test administered after the sale and the Vendors shall not be liable in any way should this occur.
6. All stock is sold subject to the Conditions of Sale recommended for use at markets by the Livestock Auctioneers' Markets Committee for England and Wales except in so far as these conflict with any Special Conditions applicable to the sale of pedigree stock, when the latter Conditions shall prevail.
7. Neither the Vendors nor the Auctioneers will be responsible for any accident or injury to persons or property, through fire or any other cause whatsoever, nor for any damage by animals prior to, during or after the sale.
8. No undertaking by the Auctioneers or their servants to take charge of any Lot or Lots after the sale or to forward them to their destination shall be held to impose upon the Auctioneers any legal obligation or vitiate any of these Conditions.
9. Inasmuch as the Auctioneers act as agents for a disclosed principal they shall not be considered personally responsible for any default on the part of either purchasers or Vendors and the remedy shall be against them only and not against the Auctioneers.
10. If these conditions are unfulfilled, the Vendors or Auctioneers shall have the power to resell the Lots, retaining any surplus and charging any deficiency and expense to the defaulter.
11. You have a right to know how we will use the information you have provided to us. We may share the information with other members of our group and may make this information available to relevant media groups and other interested parties on request. We and other members of the group may contact you by telephone, e-mail, post or fax to inform you of products or services available. If you do not want to be contacted for marketing purposes or do not wish your information to be made available to any other parties please notify us in writing.

HARRISON & HETHERINGTON LTD

SIGNATURE BEEF

'The Ultimate Solution for Beef Suckler Herds'



Limousin

Wilodge Goldcard

Pedigree coupled with performance

Freephone: 0800 783 7258

www.cogentuk.com | Find us on: 

