

LIMOUSIN

WEANED CALVES SHOW & SALE

Friday 8th December 2017

Sponsored by



To be held at
Borderway Mart, Carlisle, Cumbria CA1 2RS

semenstore.co.uk

quality semen on-line

Semenstore is a practical
one-stop semen shop for
vendors and buyers.

The Semenstore features:

On-line semen
purchasing

Automated
service

Payment collection

Professional
marketing

Semen
for all markets

Export
and domestic

Competitive
pricing
and costs

Unique offers
& packages

One-stop
Semen shop

www.semenstore.co.uk



Catalogue for
The British Limousin Cattle Society Limited
(SOLD UNDER BLCS AUCTION RULES & CONDITIONS OF SALE)

Weaned Calves

(SOLD UNDER THE NEW BLCS HEALTH RULES)

Show & Sale of
93 Weaned Calves
Comprising
38 Bull Calves and 55 Heifer Calves

Also on this day
Red Ladies Derby

82 Heifers
see separate catalogue

Friday 8th December 2017

Judging to follow Red Ladies Derby classes
Sale to follow Red Ladies Derby Sale

Thursday 7th December 2017

LIMOUSIN YOUNG BREEDERS CALF SHOW

Judging approx 5.00pm

Front Cover photo: PABO MR MUSCLE - 10,500gns (top price)
Weaned Calf Sale 2016



Auctioneers

HARRISON & HETHERINGTON
Farmstock Auctioneers, Brokers & Valuers

Head Office: Borderway Mart Rosehill Carlisle CA1 2RS
Telephone: 01228 406230 – Fax: 01228 406231

E-mail: info@borderway.com Website: www.harrisonandhetherington.co.uk

IMPORTANT NOTICE TO PROSPECTIVE PURCHASERS

SETTLEMENT & CLEARANCE OF STOCK

Please note that all lots must be settled
on the day of purchase

Completion of a buyers slip is essential for parties
who have not dealt with the company before

New customers and agents wishing to purchase on behalf
of another party must contact the companys main office
48 hours prior to a sale

No Lots can leave the market without a
'pass slip' being issued by the main office

Purchasers From Outside The United Kingdom

Invoices will be raised in pounds sterling.

We request that payment is made to us in pounds sterling
by cheque/bankers draft on the day of sale.

Card facilities are available (2% surcharge on credit cards)



**IMPORTANT NOTICE
TO PROSPECTIVE PURCHASERS**

ALL LOTS MUST BE SETTLED ON THE DAY OF PURCHASE

Parties who have not dealt with the company before should complete the undernoted form
and hand it in to the auctioneers' clerk when a purchase is made.

Alternatively it can be sent to the main office in advance of the sale.

Please fold and detach along this perforation

SALE

TRADING NAME

PARTNERS NAMES (if applicable)

FULL POSTAL ADDRESS

POSTCODE

TEL. NO.

HOLDING NO. FLOCK No.

DESTINATION DETAILS OF ANIMALS IF DIFFERENT FROM ABOVE

CPH POST CODE

2017 LIST OF ACCOMMODATION WITHIN EASY REACH OF BORDERWAY MART

Farm House Accommodation

Mount Farm Bed & Breakfast, Mount Farm, Blackford, Carlisle CA6 4ER Tel: 01228 674641
www.mount.farm.co.uk

Mrs D Nicholson, Gill Farm, Blackford, Carlisle. CA6 4EL Tel: 01228 675326

Guest House Accommodation

Athena B & B, 168 Warwick Road, Carlisle CA1 1LQ Tel: 01228 529299
www.athenabedandbreakfast.co.uk

Cherry Grove Guest House, 87 Petteril Street, Carlisle CA1 2AW Tel: 01228 541942
www.cherrygroveguesthouse.co.uk

Crossroads House, Brisco, Carlisle CA4 0QZ Tel: 01228 528994
www.crossroadshouse.co.uk

Howard Lodge Guest House, 90 Warwick Road, Carlisle CA1 1JU Tel: 01228 529842
www.howard-lodge.co.uk

Town House B&B, 153 Warwick Road, Carlisle CA1 1LU Tel: 01228 598782
www.townhousebandb.com

Warwick Lodge Guest House, 112 Warwick Road, Carlisle CA1 1LF Tel: 01228 523796
www.warwicklodgencarlisle.co.uk

Hotels

Angus Hotel 14-16 Scotland Road, Carlisle CA3 9DG Tel: 01228 523546
www.angus-hotel.co.uk

*Crown Hotel, Station Road, Wetheral, Carlisle Tel: 01228 561888
www.crownhotelwetheral.co.uk

Milton Hilltop Hotel, London Road, Carlisle CA1 2NS Tel: 01228 810899

Farlam Hall, Country House Hotel, Brampton, Cumbria CA8 2 NG Tel: 016977 46234
www.farlamhall.co.uk

Greens At Gretna, Glasgow Road, Gretna, Dumfriesshire DG16 5FG Tel: 01461 337621
www.greensatgretna.co.uk

Gretna Hall Hotel, Gretna Loaning, Gretna, Dumfries & Galloway Tel 01461 338257
www.gretnahallhotel.com

Pinegrove Hotel, 262 London Road, Carlisle CA1 2QS Tel: 01228 524828
www.pinegrovehotel.co.uk

Smiths Hotel Gretna Green, Headless Cross, Gretna Green, Dumfries & Galloway Tel: 01461 337007
www.smithsgretnagreen.com

BIO SECURITY RULES
HARRISON & HETHERINGTON LIMITED, BORDERWAY MART, CARLISLE
Notice to all Visitors and Traders

Please read and observe the following:

- Excessive dirty vehicles will not be allowed entry, therefore ensure vehicle is clean before arrival.
- All vehicles transporting livestock will be subject to a documentation check before entry to market site.
- All visitors and traders must ensure they wear clean clothing and footwear before entering market site.
- All visitors and traders using car park areas please use main entrance.
- Hauliers and farmers delivering livestock must disinfect their boots before and after loading or unloading.
- Livestock purchased or unsold will not be allowed to move unless an authorised "pass slip" has been issued by the main office.
- No livestock will be allowed to remain on the premises after a sale.
- Only staff, livestock hauliers, owners or their agents are permitted to load or unload livestock.
- Wash hands thoroughly when leaving pennage areas.
- Please observe our staff's instructions at all times.

Our on site Biosecurity Officer, Stuart Graham, will only be too pleased to give you assistance.



hhgroupplc.co.uk



First in the Field...

General Information & Sale Notes

LOCATION: The Sale will be held in the Borderway Mart, Carlisle Cumbria. Motorists should leave the M6 at Junction 43 and follow CARLISLE signs. The market is on the left hand side of the road within 1/4 mile of M6.

Timetable of Events:-

Thursday 7th December	Arrival of Stock	12 noon - 3pm
	Inspection of Stock	1pm - 4pm
	YLBC Calf Show	approx 5.00pm
	Mart closes and gates are locked	10pm
Friday 8th December	Judging of Red Ladies & Weaned Calves	8am
	Sale	11.30am

HOTELS: There are many hotels within the area, ranging from four star to excellent Bed and Breakfast accommodation, a list of which may be found on page 16 of the catalogue.

CONDITIONS OF SALE: The British Limousin Cattle Society have adopted the Auction Rules and Conditions of Sale drawn up by the N.B.A. This Sale is held subject to these rules and the Auctioneers' General Conditions of Sale, both available on request. In the event of any discrepancy between the two sets of conditions, the N.B.A. Conditions of Sale shall prevail.

Purchasers will only be permitted to claim a maximum of £200 compensation along with the purchase price for any animal which arises in dispute from the conditions of sale.

INSURANCE: A representative of the Auctioneers Insurance Brokers, will be present at the sale and will be pleased to quote Purchasers for transit and other risks.

METHOD OF SALE: All cattle will be sold in guineas (105 pence) and strictly in catalogue order, unless any alteration is announced by the Auctioneers.

COMMISSIONS: The Auctioneers will dutifully execute commissions to purchase for buyers unable to attend the sale personally, upon receipt of written instructions.

REGISTRATIONS: All stock in the Sale are registered with the British Limousin Cattle Society. (Tel 02476 696500).

PEDIGREE TRANSFERS: Official Pedigree Transfers will be effected by the Auctioneers and the British Limousin Cattle Society as soon as possible after the Sale. Full Pedigrees will be transferred free of charge to all members.

SETTLEMENT AND CLEARANCE OF STOCK: Settlement in full is due immediately at the close of Sale. No animal may leave the Sale Premises without an official 'Pass Slip', obtainable only from the Auctioneers upon settlement.

ANIMAL WELFARE: Vendors and Purchasers should note the CODE OF PRACTICE published by the Livestock Auctioneers' Market Committee for England and Wales IS OPERATIVE IN BORDERWAY MART and that weakly, unhealthy or injured stock will be refused entry by the Auctioneers. Enquiries should be directed through the market office to the Auctioneers' ANIMAL HEALTH & WELFARE OFFICER (Mr Andrew Templeton).

THE BRITISH LIMOUSIN CATTLE SOCIETY

Chief Executive: Iain Kerr

Concorde House, 24 Warwick New Road,
Leamington Spa, Warwickshire CV32 5JG

Tel: 02476 696500 • Fax: 02476 696716

Important Notice to Vendors

ARRIVAL OF STOCK - As per timetable of events (page 6).

CATTLE PASSPORT DOCUMENTATION – it is essential that all Cattle Passports and a completed Declaration Form accompany the animals to the sale premises and handed to the Auctioneers upon arrival to the market. Any animal not in possession of the required documentation will not be offered for sale.

PRE-SALE INSPECTION: All animals entered for the sale must be available for inspection, as per the timetable of events. A Veterinary Officer will examine all animals forward for general health and genetic defects, particularly teeth, eyes, testicles and udders. Appointed Society Inspector will check general conformation, locomotion and breed characteristics and temperament. Any animal discovered with a genetic fault, disease or disorder will be REJECTED. Animals will be placed in a crush for this inspection - as required by the Veterinary Officer. The Veterinary inspection will form an integral part of the pre-sale inspection procedure.

Please note - "All animals are subject to a pre-sale inspection to provide a minimum standard and animals are sold with all patent defects, and any subsequent claim after the fall of the hammer is against the vendor and not The British Limousin Cattle Society Ltd".

EVERY ANIMAL entered for the sale MUST BE PARADED FOR INSPECTION unless exempted by the Stewards, at the time and place to be notified. Evidence of faults of temperament, vices, etc., may lead to disqualification. All animals must be provided with a serviceable halter, which will become the property of the purchaser. WEANED CALVES can be shown unaltered.

UK TAGS - All cattle entered for the Sale will have their UK tags.

Tags examined as an integral part of the pre sale inspection procedure. Any tags found to have faulty, incorrect or illegible will be REJECTED from the Sale. Vendors are therefore urged, in their own best interests, to examine the UK Tags of Sale cattle before the animal(s) leave their farm, so that faulty tags can be rectified in accordance with the required Society procedures.

The Sale will be held subject to the Auction Rules, Conditions of Sale and Special Regulations of the British Limousin Cattle Society.

The proceeds of sale are guaranteed by the Auctioneers, who will account to Vendors on the day of the Sale. Such guarantee, however, does not extend to the animals sold for export, to which special conditions apply.

UPSET PRICES - WEANED CALVES - there is no 'upset' price.

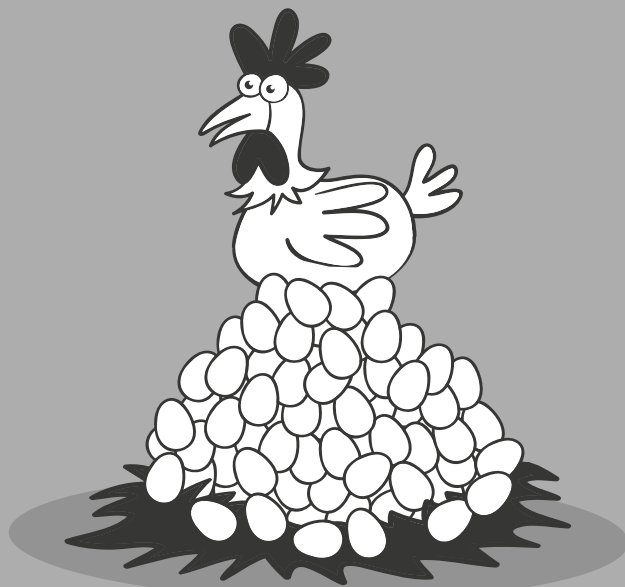
RESERVE PRICES: Vendors shall have the right to refuse to accept the final bid for their animals. The auctioneers reserve the right to charge half commission on the amount of the final bid in the case of animals which fail to reach the Vendors reserve price.

All animals will be sold in guineas (105 pence) and a commission of 5% will be charged by the Auctioneers on all sales. A further levy of 1 % will be charged and paid to the British Limousin Cattle Society. No animal may be sold privately before being passed through the auction ring and FULL COMMISSION will be charged on the sale of any animal sold by private treaty after the auction. All such transactions MUST BE PASSED THROUGH THE AUCTIONEERS OFFICE.

PRIZE MONEY: will be withheld unless the winners are sold, either by auction or private treaty.

STRAW: A limited amount of bedding straw will be provided by the Auctioneers free of charge. Additional straw, if required, may be purchased from the Auctioneers.

When looking for value, we'll give you more



At H&H Insurance Brokers, we know that it's not just the price of your policy, or the level of cover it provides that's important.

That's why with us, we give you more than just access to the widest range of insurers, we also negotiate on your behalf to ensure you get exactly the right policy – and at the best possible price.

And with ongoing expert advice provided for free, we're fast becoming the insurance broker of choice for the region's agricultural community.

Why not speak to one of our farm insurance experts today on 01228 406 290 for a 'no obligation' quote.



Authorised and regulated by the
Financial Conduct Authority (FCA)
under Firm Reference Number 305809



www.hhinsurancebrokers.co.uk



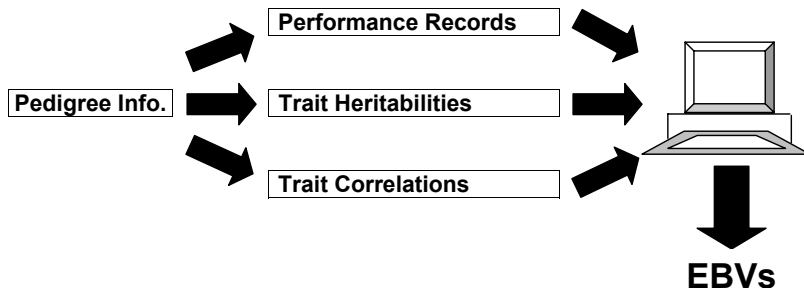
LIMOUSIN PERFORMANCE RECORDING

HOW TO USE LIMOUSIN BREEDING VALUES ESTIMATED BREEDING VALUES (EBVs) & GENOMIC BREEDING VALUES (GEBVs)

1. What Are EBVs?

Many factors influence the appearance and performance of a bull. For example, age, nutrition, management, age of dam, health, season, quality of farm and the genes it has inherited from its parents. The only factor that can be passed on to its calves, however, is its inherited genetic potential. Estimated Breeding Values are measures of that potential and are calculated from the following:

- Measurements from the animal itself
- Measurements from the animal's herd mates (known as 'contemporaries')
- Measurements from the animal's relatives and their contemporaries
- The degree to which one trait influences another (known as a 'correlation')
- The degree to which each trait is passed on to the next generation (known as 'heritability')



2. What Are GEBVs?

In March 2016, Genomic Breeding Values (GEBVs) became available for all Limousin cattle for a range of new Carcase Traits. In July 2017, GEBVs also became available for three new Female Fertility traits and Calf Survival. They are the first of their kind within the UK's beef sector and are the result of five years of research between British Limousin Cattle Society, ABP Food Group and SRUC.

GEBVs take conventional EBVs a step further by using information from animals' DNA as well as the usual measurements of performance. To produce the breeding value the DNA is compared to a DNA 'key' for the breed:

This key is created from a core population of Limousin animals that have been measured on-farm and in the abattoir as well as having DNA collected

The key is like a library that cross refers information from the DNA strand with different levels of abattoir performance.

GBVs are produced by comparing the DNA of an animal with the key. They are calculated from the correspondence of that animal's DNA with those in the library

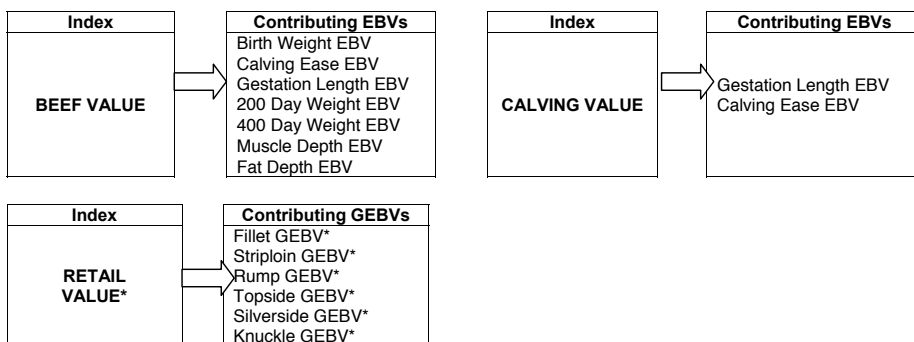
GEBVs are used in exactly the same was as EBVs...

Albeit they are produced in slightly different ways GEBVs are in essence breeding values that indicate genetic merit as EBVs do and the way the two are used should not differ (see paragraph 5 below).

3. What Are Breeding Indexes?

It is often desirable to select animals on the basis of more than one EBV/GEBV. Breeding Indexes focus on specific breeding goals and combine the appropriate EBVs/GEBVs in to a single figure based on their relative economic value. This is widely regarded as the most efficient method of selecting on a number of traits at once.

Three Breeding Indexes are available at sales, as follows:



* GEBVs available for animals that have been genotyped for this purpose and where the values have been published by the owner.

When using an Index it is important that your breeding objective is broadly similar to that of the Index in question, otherwise you may unwittingly change aspects of your herd that you did not necessarily want to.

4. What Breeding Value Information Is Available?

In sale catalogues, EBVs & GEBVs are produced for up to eighteen traits that focus on an animal's economic performance.

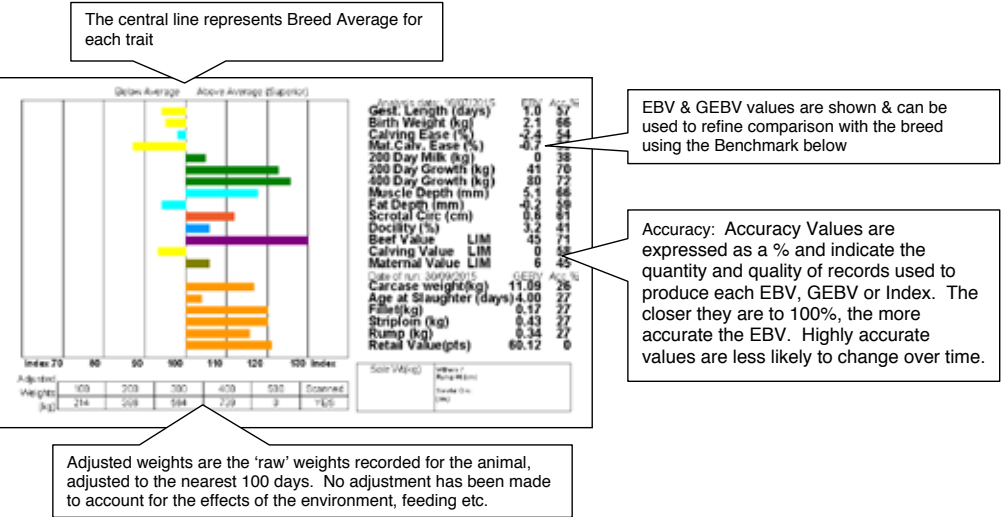
Trait	Breeding Value Indicates...	Look for...
Birth Weight (kg)	Genetic potential for calf weight at birth	High negative EBVs if you want low calf birth weights
Calving Ease (%)	Ease with which a bull's progeny will be born	High positive EBVs if you want less assisted calvings
Maternal Calving Ease (%)	Ease with which a bull's daughters will calve	High positive EBVs if you want less assisted calvings
Gestation Length (days)	Genetic potential for gestation length	High negative EBVs if you want short gestation lengths
200 Day Milk (kg)	The maternal component of 200 day growth (i.e. the contribution that the milking and maternal abilities of a bull's daughters make towards their calves' growth at 200 days of age)	High positive EBVs if you want daughters to wean heavier calves
200 Day Weight (kg)	Genetic potential for growth from birth to 200 days of age	High positive EBVs if you want high growth rates to weaning
400 Day Weight (kg)	Genetic potential for growth from birth to 400 days of age	High positive EBVs if you want high growth rates to finishing
Muscle Depth (mm)	Genetic potential for muscularity and potential to increase lean meat yield	High positive EBVs if you want good calf conformation
Fat Depth (mm)	Genetic potential for leaner carcasses	Negative EBVs if you want to produce leaner carcasses or take calves to heavier weights without penalty for fatness
Age at 1st Calving (days)	Genetic potential for early sexual maturity	High negative EBVs for a greater proportion of heifers that hold to 1 st service
Calving Interval (days)	Genetic potential for the time taken to get back in calf	High negative values to breed cows that get back in calf quickly
Docility (%)	Genetic potential for being calm when handled	High positive values for animals that are likely to be more calm when handled
Scrotal Circumference (cm)	Genetic potential for scrotal size. Linked to male serving capacity and puberty of daughters.	High positive values for animals with higher likely serving capacity and earlier maturing daughters.
Age to Slaughter GEBV (days)	Age at slaughter assuming a standard carcass weight of 350kgs	High negative values (less days) for animals that will reach 350 kg deadweight quicker
Carcass Weight GEBV (kg)	Carcass weight at a standard slaughter age of 600 days	High positive values for animals that will reach heavier carcass weights at 600 days of age
Fillet GEBV (kg)	Weight of fillet at a standard slaughter age of 600 days and carcass weight of 350kg	High positive values for higher fillet weights in the carcass
Striploin GEBV (kg)	Weight of striploin at a standard slaughter age of 600 days and carcass weight of 350kg	High positive values for higher striploin weights in the carcass
Rump GEBV (kg)	Weight of rump at a standard slaughter age of 600 days and carcass weight of 350kg	High positive values for higher rump weights in the carcass

Breeding values for further traits for each animal are available on www.taurusdata.co.uk. Enter animal name or ear number in the Quick Search box. You can also search by breeder and by breeding values ('Breeder Search' and 'EBV Search'). The additional traits available are:

- Longevity EBV & GEBV
- Silverside EBV & GEBV
- Calf Survival EBV & GEBV
- Topside EBV & GEBV
- Knuckle EBV & GEBV

5. How to Use the Information in This Catalogue

EBVs & GEBVs are expressed in the same unit as the recorded trait (eg kgs for 400 Day Weight, mm for Muscle Depth etc) are relative to the Breed Average. In sale catalogues, Breed Average for each trait is represented by the vertical line that is central on the bar chart. Bars that lie to the right of that line indicate EBVs/GEBVs that are above average. The further to the right they lie, the higher above Breed Average they are. Equally, bars that lie to the left of the line indicate EBVs/GEBVs that are below Breed Average. The further to the left they are, the further below Breed Average they are. An example is as follows:



The numeric EBV & GEBV values on the charts can be used to further refine comparison with the breed using the Breed Benchmark below. This is updated annually.

2017 Limousin Breed Benchmark

Trait	Bottom			Breed Avg	Top		
	1%	10%	25%		25%	10%	1%
Birth Weight (kg)	3.9	3.0	2.4	1.8	1.1	0.6	-0.4
Calving Ease (%)	-5.9	-4.3	-3.3	-2.2	-1.2	-0.2	1.4
Mat. Calv. Ease (%)	-1.5	-0.8	-0.4	0.0	0.5	0.9	1.6
Gest. Length (days)	4	2	1	0	-1	-2	-3
Calving Value	LM-4C	LM-2C	LM-1C	LM1C	LM2C	LM3C	LM5C
200 Day Growth (kg)	-1	10	16	23	30	36	46
400 Day Growth (kg)	-1	18	29	42	54	66	85
Muscle Depth (mm)	-0.9	0.8	1.7	2.8	3.9	4.9	6.6
Fat Depth (mm)	-0.5	-0.3	-0.2	-0.1	0.0	0.1	0.3
Beef Value	LM4	LM13	LM18	LM24	LM30	LM36	LM45
200-Day Milk (kg)	-5	-3	-2	-1	0	1	3
Age 1st Calv. (days)*	46.2	33.5	26.1	17.8	9.6	2.2	-10.6
Longevity (rel. no calves born to 6.5 yrs)*	-0.14	-0.08	-0.06	-0.02	0.01	0.04	0.09
Calv. Interval (days)*	8.7	4.7	2.3	-0.4	-3.0	-5.4	-9.5
Calf Survival (probability to 10 mths)*	-4	-3	-2	-1	0	1	2
Scrotal Circ. (cm)	-0.6	-0.2	0.0	0.3	0.5	0.7	1.1
Dociity (%)	-1.6	0.3	1.3	2.5	3.7	4.8	6.7
Carcase Wt (kg)*	-7.5	-2.3	0.8	4.2	7.7	10.7	16.0
Slaught. Age (days)*	24	16	12	7	2	-3	-11
Fillet (kg)*	0.03	0.07	0.09	0.12	0.15	0.17	0.22
Striploin (kg)*	0.01	0.14	0.22	0.31	0.4	0.48	0.61
Topside (kg)*	0.18	0.43	0.57	0.73	0.9	1.04	1.29
Rump (kg)*	0.07	0.21	0.29	0.38	0.46	0.54	0.68
Silverside (kg)*	0.14	0.45	0.63	0.83	1.02	1.2	1.51
Knuckle (kg)*	0.05	0.18	0.26	0.35	0.44	0.52	0.66
Retail Value*	LM1R	LM10R	LM15R	LM21R	LM27R	LM32R	LM41R

6. Things to Consider...

- To establish just how much influence a bull will pass on to his progeny it is important to remember to halve the value of the EBV/GEV, since the other half of a calf's genes comes from the cow.

For example, a bull with a 400-Day Growth EBV of +62 is estimated to have the genetic potential to be 62kg heavier at 400 days of age compared to a bull with an EBV of 0. His calves would be expected to be 31kg heavier at that age when compared to calves by a bull with an EBV of 0, since they only inherit half of their growth genes from their sire (the other half coming from their dam).

- Select animals using EBVs/GEVVs that are relevant to your farm, cow type and market

- Bear in mind that EBVs/GEBVs predict an animal's economic performance. They are no judge of factors such as soundness, locomotion, breed type etc and you must be satisfied with your potential purchase in these respects too.
- Consider the traits that will make you most money, but
- Don't forget to check traits you may be compromising in pursuit of your goals, such as Calving Ease etc
- EBVs/GEBVs change as time goes on. New calves and new performance records tell us more about animals' breeding potential. Limousin EBVs/GEBVs are updated three times per annum and all values will change as more information is added and the accuracy of the predictions increases.

7. EBV/GEBV & Pedigree Info Just a Click Away

EBV, GEBV and pedigree information on all Limousin cattle are just a few internet clicks away...

Step 1: Click the 'Taurusdata Online Herd Book' button on the Limousin Society homepage (www.limousin.co.uk) or go direct to www.taurusdata.co.uk

Step 2: In the 'All Breeds Quick Search' box type the name or ear number of the animal you are interested in or click on the 'Breeder Search' button to look at all animals belonging to or bred by a particular breeder.

The site will then tell you the animal's owner/breeder details, its breeding values, its pedigree and list its progeny with full links to all of their information.

8. Further Information

For further information, please contact Alison Glasgow, British Limousin Cattle Society on telephone 02476 696500, e-mail alison@limousin.co.uk or visit the BLCS web site www.limousin.co.uk, 'Performance Programmes'.

HERD HEALTH AT BRITISH LIMOUSIN CATTLE SOCIETY (BLCS) COLLECTIVE SALES

Introduction

Following the cash-back Herd Health Initiative introduced by the Society in 2005, a second major health step saw the introduction of Herd Health Declarations at BLCS Collective Sales from 2007.

New herd health rules were introduced by the BLCS at nominated premier Collective Society Sales from May 2011 and these are now in place at all premier BLCS Collective Sales (Stirling February & October; Carlisle February, May, October & December; Brecon May & November).

The principal aim is to standardise herd health declarations and information presented in order to provide both members and customers alike with clear, accurate herd health information at the point of sale and within the given sale catalogue. As such it is attractive and informative for customers and aims to further raise the level of buyer confidence.

BLCS Herd Health Rules have two principal elements:

Part 1. From 1st May 2011, herds selling at the premier Collective Society Sales have to be members of, and adhering to, the terms of a CHeCS approved Herd Health Scheme. At a minimum, this must include a whole herd test for Johnne's disease.

Part 2. From 1st May 2011, all animals male and female, including calves at foot, presented at the premier Collective Society Sales be EITHER from a BVD Accredited Herd within a CHeCS approved Herd Health Scheme OR to have been BVD tested virus free. All animals forward will be required to be BVD vaccinated prior to sale with an approved vaccine. Pregnant animals must have had testing and vaccination completed prior to service. Vaccination of calves at foot to be in accordance with CHeCS guidelines and recommendations.

Herd Health Declaration

The sale entry form is accompanied by a Herd Health Declaration form asking vendors questions regarding for example: TB status; membership of CHeCS (www.checs.co.uk) health schemes (Advance Cattle Health Scheme, AFBI Cattle Health Scheme, Herdsure Cattle Health Improvement Service, HiHealth Herdcare, NML Herdwise, Premium Cattle Health Scheme, Shetland Animal Health Scheme) and Johnne's, BVD, IBR and Lepto status. This form is shown here.

A condensed version of the Herd Health Declaration information appears in the Vendors' Index at the front of the respective sale catalogue.

Is the Herd Health Declaration compulsory?

For premier collective sales (Carlisle February, May, October & December; Stirling February & October; Brecon May & November) the Herd Health Declaration is compulsory. For reasons of clarity and to provide purchasers with the most accurate information available, vendors are required to complete this at time of entry.

Although not compulsory at other collective sales (Ballymena, Dungannon, Thainstone & Stirling in May), the Society recommends that vendors complete the Herd Health Declaration. This information then appears in the Vendors' Index within the catalogue. Where a member has chosen not to complete the Herd Health Declaration, it will simply say 'No Herd Health Declaration'.

What Other Health Information may be displayed?

Vendors are encouraged to apply to their respective CHeCS health scheme for individual animal health cards for display on pens. For an individual animal's test results, or vaccination histories, regarding BVD, IBR, Lepto or Johne's, these are permitted above the sale pens only upon presentation of a signed veterinary declaration to verify that the animal concerned has had a clear test.

Again, for reasons of practicality, no health information notes are to be put in the catalogue footnotes by vendors. Similarly, the Society has requested that no declarations on health information be given by the auctioneer during the sale. Again, the sole purpose of this is to avoid confusion and to try and ensure that the information provided is done accurately, fairly and in a standardised format in the catalogue. This point has been agreed with the auctioneers.

Introduction of Johne's Risk Levels from 1st January 2013

From 1st January 2013, CHeCS, the self-regulatory body for cattle health schemes in the UK and Ireland, has agreed a change to Johne's testing with herds classified on a Risk Level basis of 1 to 5 (with 1 being low risk and 5 high risk). Please note that the new Risk Levels only apply to herds that have completed a whole herd test for Johne's under the new classification (which could be any time until 31st December 2013). The Herd Health Declaration includes a section where breeders are able to indicate their Johne's Risk Level, once known.

The Risk Levels are as follows:

Risk Level 1	herds that were previously Accredited
Risk Level 2	herds that have had 1 or more clear qualifying tests
Risk Level 3	herds that have 3% or fewer reactors every year*
Risk Level 4	herds that have more than 3% reactors every year**
Risk Level 5	herds not in a CHeCS Johne's disease programme and herds with no health plan in place

* Note, for herds with fewer than 33 animals in the target age range, rather than 3%, Risk Level 3 will be one animal testing positive for Johne's

** Note, for herds with fewer than 33 animals in the target age range, rather than 3%, Risk Level 4 will be more than one animal testing positive for Johne's

It is a condition of BLCS Premier Collective Sales that animals from herds that are Johnes Risk Level 5 are not permitted to be sold.

Should you have any queries regarding the new Johne's Risk Level classification, please contact your respective CHeCS health scheme.

What if a vendor is selling an animal/s that he did not breed?

Vendors are still requested to fill in the Herd Health Sale Declaration accordingly. Prospective customers are advised to speak to vendors directly to acquire accurate health information on animals offered but not bred by the seller.

Feedback & more information

The Society welcomes members' and customers' feedback on the Herd Health Declarations and health policy at sales. If you have further questions, please speak to the Society representative, Iain Kerr or the Auctioneers.



BRITISH LIMOUSIN CATTLE SOCIETY OFFICIAL SALE HERD HEALTH DECLARATION

HOLDING LETTERS: _____ HERD PREFIX: _____

NAME: _____ TEL: _____

ADDRESS: _____

SALE DATE: _____

BOVINE TB	
DATE HERD LAST TESTED CLEAR: _____	TESTING INTERVAL <input type="checkbox"/> 1 Year <input type="checkbox"/> 3 Years <input type="checkbox"/> 2 Years <input type="checkbox"/> 4 Years

HEALTH SCHEME	
ARE YOU A MEMBER OF A CHcS CONTROLLED HEALTH SCHEME <input type="checkbox"/> Yes <input type="checkbox"/> No	
IF YES, TICK WHICH ONE	
<input type="checkbox"/> SAC Premium Cattle Health Scheme <input type="checkbox"/> HI Health Herdcare <input type="checkbox"/> NML Herdwise	
<input type="checkbox"/> VLA Herdsure <input type="checkbox"/> NWL Advance Cattle Health Scheme	
<input type="checkbox"/> AFBI Cattle Health Scheme <input type="checkbox"/> Shetland Animal Health Scheme	
IF YES, TICK WHICH DISEASES APPLY <input type="checkbox"/> JOHNE'S <input type="checkbox"/> BVD <input type="checkbox"/> IBR <input type="checkbox"/> LEPTO	

ALL VENDORS, WHETHER IN CHcS SCHEMES OR PRIVATELY TESTING, SHOULD COMPLETE THE FOLLOWING:			
	Accredited free (CHcS members only)	Herd Testing	Vaccinating
BVD	<input type="checkbox"/> Yes <input type="checkbox"/> No If yes, since: _____	<input type="checkbox"/> Yes <input type="checkbox"/> No If yes, since: _____	<input type="checkbox"/> Yes If yes name of <input type="checkbox"/> No Vaccine: If yes, since: _____
IBR	<input type="checkbox"/> Yes <input type="checkbox"/> No If yes, since: _____	<input type="checkbox"/> Yes <input type="checkbox"/> No If yes, since: _____	<input type="checkbox"/> Yes If yes name of <input type="checkbox"/> No Vaccine: If yes, since: _____
LEPTO	<input type="checkbox"/> Yes <input type="checkbox"/> No If yes, since: _____	<input type="checkbox"/> Yes <input type="checkbox"/> No If yes, since: _____	<input type="checkbox"/> Yes If yes name of <input type="checkbox"/> No Vaccine: If yes, since: _____
JOHNE'S	Risk Level <input type="checkbox"/> Risk Level 1 <input type="checkbox"/> Risk Level 2 <input type="checkbox"/> Risk Level 3 <input type="checkbox"/> Risk Level 4 <input type="checkbox"/> Risk Level 5	<input type="checkbox"/> Yes <input type="checkbox"/> No If yes, since: _____	<input type="checkbox"/> Yes If yes name of <input type="checkbox"/> No Vaccine: If yes, since: _____

Declaration:

I certify that the above information is correct at date of entry. I allow the Breed Society/auctioneer to verify the details above with my CHcS Health Scheme Provider.

Signed: _____ Name: _____ Date: _____

The British Limousin Cattle Society, Concorde House, 24 Warwick New Road, Leamington Spa, CV32 5JG Tel 02476-696500

Disclaimer: The health information above is as supplied by, or on behalf of the breeder.

The responsibility for the accuracy of the information rests solely with the breeder and not with the British Limousin Cattle Society Ltd.

Vendors Index

The Vendors' Index includes a condensed version of the Herd Health information submitted at point of entry by the vendor. For further information, please see Explanatory Notes & copy of Herd Health Declaration form also included in the catalogue.

Alford, M	FOXHILLFARM	181, 182, 183, 184
Foxhill Farm, Blackborough, Cullompton, Devon, EX15 2HU (TB1) (01884 849369)		
- Consigned from a 4 year TB testing interval holding -		
- Johnne` s Risk Level 1 -		
- Member of a CheCS controlled health scheme for BVD & Johnes -		
- Accredited free for BVD -		
- Routinely vaccinating against BVD -		
Allen, J & S	DERG	109, 180
158 Fyfin Road, Victoria Bridge, Strabane, Co Tyrone, BT82 9LJ (TB1) (028 8167 1280)		
- Consigned from a 1 year TB testing interval holding -		
- Johnne` s Risk Level 2 -		
- Member of a CheCS controlled health scheme for Johnes -		
- Accredited free for BVD -		
- Routinely vaccinating against BVD & Lepto -		
Barron, W	BARRONS	115—117, 177
Morrow Edge Farm, Burnhope, , Durham, DH7 ODS (TB4) (01207 529 950)		
- Consigned from a 4 years TB testing interval holding -		
- Johnne` s Risk Level 1 -		
- Member of a CheCS controlled health scheme for BVD, Lepto & Johnes -		
- Accredited free for BVD -		
- Routinely vaccinating against BVD & Lepto -		
Bowe, S	WIGGONBY	158, 159, 160, 161, 162
Midtown Farm, Wiggonby, Wigton, Cumbria, CA7 0JR (TB4) (01697 342 198)		
- Consigned from a 4 years TB testing interval holding -		
- Member of a CheCS controlled health scheme for BVD & Johnes -		
- Routinely vaccinating against BVD -		
Burns, Michael	SHAWS	131
Glenside Farm, Kirkmichael, Maybole, Ayrshire, KA19 7JZ (TB4) ()		
- Consigned from a 4 years TB testing interval holding -		
- Johnne` s Risk Level 1 -		
- Member of a CheCS controlled health scheme for BVD & Johnes -		
- Accredited free for BVD -		
- Routinely vaccinating against BVD -		
Callion, J & A	MELBREAK	147, 148, 149, 150, 151, 152
6 Skreen Road, Shaneragh, Dromore, Co Tyrone, BT78 3EX (TB1) (02882 897704)		
- Consigned from a 1 year TB testing interval holding -		
- Johnne` s Risk Level 1 -		
- Member of a CheCS controlled health scheme for BVD & Johnes -		
- Accredited free for BVD -		
- Routinely vaccinating against BVD -		
Clancy, Thomas	COLLEGELAND	145, 146
37 Aughanlig Road, Moy, Dungannon, Co Tyrone, BT71 6SR (TB1) (02887 784025)		
- Consigned from a 1 year TB testing interval holding -		
- Johnne` s Risk Level 2 -		
- Member of a CheCS controlled health scheme for Johnes -		
- Routinely vaccinating against BVD & Lepto -		
Conway, M J	CRAIGATOKÉ	155, 156, 157
26 Meenagorp Road, Plumbridge, , Co Tyrone, BT79 8DP (TB1) (028 8164 8401)		
- Consigned from a 1 year TB testing interval holding -		
- Johnne` s Risk Level 2 -		
- Member of a CheCS controlled health scheme for BVD & Johnes -		
- Routinely vaccinating against BVD & Lepto -		

Corbett, V A S & T V S	TEMESIDE	144
The Gorther, Felindre, Nr Knighton, Powys, LD7 1YT (TB1) (01547 510 217)		
- Consigned from a 1 year TB testing interval holding -		
- Johne` s Risk Level1 -		
- Member of a CHeCS controlled health scheme for BVD & Johnes -		
- Accredited free for BVD -		
- Routinely vaccinating against BVD & IBR & Lepto -		
Cruikshank, Norman	COWFORD	121
Cowford Farm, Cleghorn, Nr Lanark, , ML11 8NR (TB4) (01555 870244)		
- Consigned from a 4 years TB testing interval holding -		
- Johne` s Risk Level3 -		
- Member of a CHeCS controlled health scheme for BVD & Johnes -		
- Accredited free for BVD -		
Dawes, P	DINMORE	141, 142
Kipperknowle Farm, Dinmore Manor, Hereford, , HR4 8EE (TB1) (01432 830847)		
- Consigned from a 1 year TB testing interval holding -		
- Johne` s Risk Level3 -		
- Member of a CHeCS controlled health scheme for BVD & Johnes -		
- Routinely vaccinating against BVD & Lepto -		
Gammie, A & J	WESTPIT	132
Drumforber, Laurencekirk, Kincardineshire, Aberdeenshire, AB30 1RS (TB4) (01561 377 407)		
- Consigned from a 4 years TB testing interval holding -		
- Johne` s Risk Level1 -		
- Member of a CHeCS controlled health scheme for BVD & Johnes -		
- Accredited free for BVD -		
- Routinely vaccinating against BVD -		
Goldie, Bruce T	GOLDIES	125, 166
Townfoot, Mouswald, Dumfries and Galloway, , DG1 4LX (TB4) (01387 830 105)		
- Consigned from a 1 years TB testing interval holding -		
- Johne` s Risk Level 1 -		
- Member of a CHeCS controlled health scheme for BVD & Johnes & Lepto -		
- Accredited free for BVD -		
- Routinely vaccinating against BVD & Lepto -		
Graham, D& L	BURNBANK	171, 172, 173
Mains Of Burnbank Farm, Blairdrummond, , Stirling, FK9 4UZ (TB4) (01786 841348)		
- Consigned from a 4 years TB testing interval holding -		
- Johne` s Risk Level1 -		
- Member of a CHeCS controlled health scheme for BVD & Johnes -		
- Accredited free for BVD -		
Graham, R & J	GRAHAMS	130, 138, 139, 140
Airthrey Kerse Dairy Farm, Bridge Of Allan, , Stirling, FK9 4RW (TB4) (01786 833 206)		
- Consigned from a 4 years TB testing interval holding -		
- Johne` s Risk Level3 -		
- Member of a CHeCS controlled health scheme for BVD & Johnes -		
- Accredited free for BVD -		
Green, D G	DERRIAGHY	124
17a Derriaghy Road, Lisburn, , Co Antrim, BT28 3SF (TB1) (028 9060 2545)		
- Consigned from a 1 year TB testing interval holding -		
- Johne` s Risk Level2 -		
- Member of a CHeCS controlled health scheme for BVD & Johnes -		
- Routinely vaccinating against BVD & IBR & Lepto -		
Henshall, P J	RINGWAY	128-129, 153, 154
Sarkshields Farm, Eaglesfield, Lockerbie, Dumfries and Galloway, DG11 3AE (TB4) (01461 800 211)		
- Consigned from a 4 years TB testing interval holding -		
- Johne` s Risk Level2 -		
- Member of a CHeCS controlled health scheme for BVD & Johnes -		
- Accredited free for BVD -		
- Routinely vaccinating against BVD -		

Hutchinson, T W	KINGSHAUGH	122-123, 185
Bail Hill Farm, Forest in Teesdale, Barnard Castle, Co Durham, DL12 0EL (TB4) (01833 622 249)		
- Consigned from a 4 years TB testing interval holding -		
- Johnne`s Risk Level1 -		
- Member of a ChECS controlled health scheme for BVD & Johnes -		
- Routinely vaccinating against BVD -		
Illingworth, S D	GLENROCK	168
Howgillside, Eaglesfield, Lockerbie, Dumfries and Galloway, DG11 3AF (TB4) (01461 800 273)		
- Consigned from a 4 years TB testing interval holding -		
- Johnne`s Risk Level1 -		
- Member of a ChECS controlled health scheme for BVD & Johnes -		
- Accredited free for BVD -		
- Routinely vaccinating against BVD & Lepto -		
Kedzie Farm Ltd,	SWALESMOOR	102, 178
Kedzie Farm House, Kedzie Farm, Blainsie, Lauderdale, TD1 2PJ (TB4) (01422 353325)		
- Consigned from a 4 years TB testing interval holding -		
- Johnne`s Risk Level2 -		
- Member of a ChECS controlled health scheme for BVD & Johnes -		
- Accredited free for BVD -		
- Routinely vaccinating against BVD & IBR -		
Keys, Victor & Stephen	ASHVIEW	113—114, 174, 175, 176
8 Aghnmoe Road, Dromore, Co Tyrone, , BT78 3HR (TB1) (02882 898132)		
- Consigned from a 1 year TB testing interval holding -		
- Member of a ChECS controlled health scheme for BVD & Johnes -		
- Accredited free for BVD -		
- Routinely vaccinating against BVD & Lepto -		
Knox, Clive	BEACHMOUNT	170
Cragside, Hume, Kelso, , TD5 7TR (TB1) ()		
- Consigned from a 1 year TB testing interval holding -		
- Johnne`s Risk Level1 -		
- Member of a ChECS controlled health scheme for Johnes -		
- Routinely vaccinating against BVD & Lepto -		
Lee & C M Lloyd, G J	CALOGALE	101, 179
Ger-Y-Coed, Four Roads, Kidwelly, Carmarthenshire, SA17 4SH (TB1) (01269 860433)		
- Consigned from a 1 year TB testing interval holding -		
- Johnne`s Risk Level1 -		
- Member of a ChECS controlled health scheme for BVD & Johnes -		
- Accredited free for BVD -		
Long, G&P	MILLBROW	167
Mill Brow, Skelwith Bridge, Ambleside, Cumbria, LA22 9NH (TB4) (01539 433 253)		
- Consigned from a 4 years TB testing interval holding -		
- Johnne`s Risk Level1 -		
- Member of a ChECS controlled health scheme for BVD & Johnes -		
- Accredited free for BVD -		
- Routinely vaccinating against BVD & Lepto -		
Martin, GN	ASHMARA	106-108
69 Banbridge Road, Dromara, Dromore, , BT25 2NE (TB1) (028 9753 3002)		
- Consigned from a 1 year TB testing interval holding -		
- Johnne`s Risk Level3 -		
- Member of a ChECS controlled health scheme for Johnes -		
- Routinely vaccinating against BVD & Lepto -		
Mason, A J	ODDACRES	126-127
Oddacres Farm, Embsay, Skipton, North Yorkshire, BD23 6PP (TB4) (01756 792636)		
- Consigned from a 4 years TB testing interval holding -		
- Johnne`s Risk Level3 -		
- Member of a ChECS controlled health scheme for BVD & Johnes -		
- Accredited free for BVD -		

Milroy, J & A	CAIRNVALLEY	119-120
Cairnwhin, Pinmore, Girvan, , KA26 0TE (TB4) (01465 861668)		
- Consigned from a 4 years TB testing interval holding -		
- Johnne` s Risk Level3 -		
- Member of a CHeCS controlled health scheme for BVD & Johnes -		
- Accredited free for BVD -		
- Routinely vaccinating against BVD -		
Murray, J A	HANEVE	133
Glebe Farm, West Butsfield, Tow Law, Bishops Auckland, DL13 4JD (TB4) (01388 730 318)		
- Consigned from a 4 years TB testing interval holding -		
- Johnne` s Risk Level1 -		
- Member of a CHeCS controlled health scheme for BVD & Johnes -		
- Accredited free for BVD -		
- Routinely vaccinating against BVD -		
Norman, E & E	NORMAN	110-112, 163, 164, 165
Little Orton Farm, Little Orton, Carlisle, Cumbria, CA5 6EP (TB4) (01228 576284)		
- Consigned from a 4 years TB testing interval holding -		
- Johnne` s Risk Level2 -		
- Member of a CHeCS controlled health scheme for BVD & IBR & Johnes -		
- Accredited free for BVD -		
- Routinely vaccinating against BVD & IBR -		
Ogg, A & G	CONFLUENCE	188, 189, 190, 191, 192
College Farm, Back Street, Alkborough, Scunthorpe, Lincolnshire, DN15 9JN (TB4) (01724 720 728)		
- Consigned from a 4 years TB testing interval holding -		
- Johnne` s Risk Level2 -		
- Member of a CHeCS controlled health scheme for BVD & IBR & Johnes & Lepto -		
- Accredited free for BVD & Lepto -		
Orr, Andrew	LOMOND	118, 186, 187
Lomondmuir Farm, Wester Balgedie, Kinross, , KY13 9HE (TB4) ()		
- Consigned from a 4 years TB testing interval holding -		
- Johnne` s Risk Level1 -		
- Member of a CHeCS controlled health scheme for BVD & Johnes -		
- Accredited free for BVD -		
- Routinely vaccinating against BVD -		
Renton & HSB Redden Partners, A	MEADOWRIG	103-105
c/o Transcom Euope Ltd, 11B Windmill Way West, Ramparts Business Park, Berwick Upon Tweed, TD15 1TB (TB4) (01289 302480)		
- Consigned from a 4 years TB testing interval holding -		
- Johnne` s Risk Level2 -		
- Member of a CHeCS controlled health scheme for BVD & Johnes -		
- Accredited free for BVD -		
- Routinely vaccinating against BVD & IBR -		
Roberts, G T & R J	POND PARK	169
1 Highfields Avenue, Lisburn, , Co Antrim, BT28 3GE (TB1) (02892 634630)		
- Consigned from a 1 year TB testing interval holding -		
- Johnne` s Risk Level2 -		
- Member of a CHeCS controlled health scheme for BVD & Johnes -		
- Routinely vaccinating against BVD & IBR & Lepto -		
Thomas, M L	NEBO	143
Bryn Farm, Nebo, Llanrwst, Conwy, LL26 0TE (TB1) (01690 710315)		
- Consigned from a 1 year TB testing interval holding -		
- Johnne` s Risk Level1 -		
- Member of a CHeCS controlled health scheme for BVD & Johnes -		
- Accredited free for BVD -		
Watson, A & W	SAUNDERS	134-137
Saunders Close, Slaggyford, Brampton, Cumbria, CA8 7NS (TB4) (01434 381 243)		
- Consigned from a 4 years TB testing interval holding -		
- Johnne` s Risk Level1 -		
- Member of a CHeCS controlled health scheme for BVD & Johnes -		
- Accredited free for BVD -		

Disclaimer: The health information above is as supplied by, or on behalf of the breeder at time of entry.
The responsibility for the accuracy of the information rests solely with the breeder and not with the
British Limousin Cattle Society Ltd

BULL CALVES

Lot G J Lee & C M Lloyd

101 CALOGALE NAPOLEON

Born 02/01/2017

LIC17-0062

UK 752063/600062

Got by AI

Embryo Calf

Sire *TRUEMAN JAGGER SLN14-6436

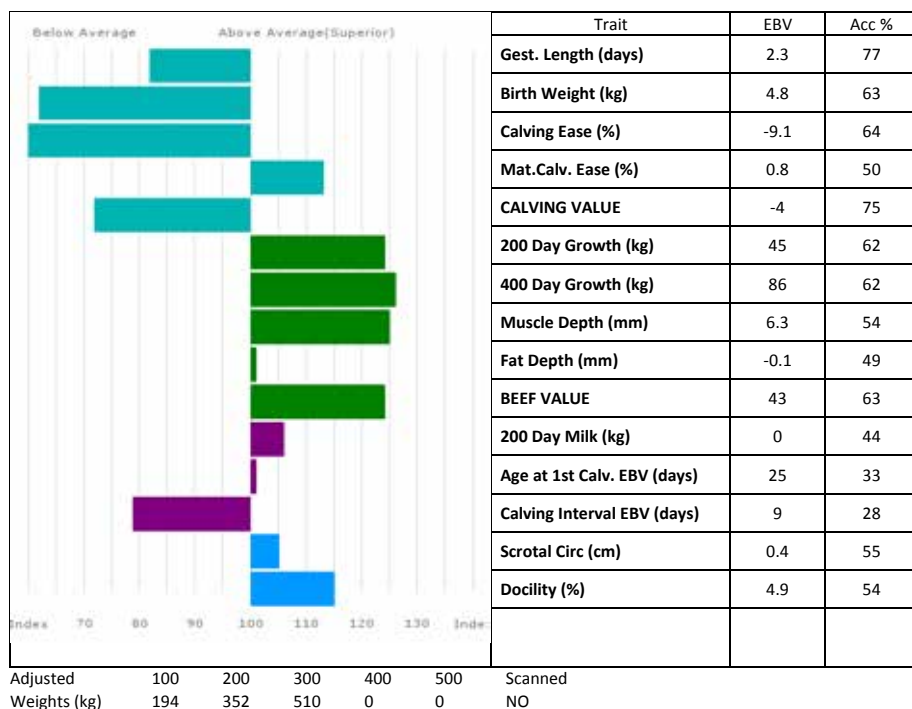
gs. AMPERTAINÉ GIGOLO MGD11-051

gd. TRUEMAN GRAZIA SLN11-006

Dam TRUEMAN FLORENCE SLN10-006

gs. WILODGE VANTASTIC WEY04-037

gd. TRUEMAN SONG SLN01-002



CALOGALE NAPOLEON is a tremendous young bull and is one of the first to be sired by the world record breaking **Trueman Jagger**. Together with his two full siblings they are three of the best calves ever bred at Calogale and have been much admired by numerous visitors to the farm. Napoleon has a wonderful temperament, is exceptionally wide and carries an abundance of muscle. His dam is the outstanding **Trueman Florence** who has consistently bred exceptionally well for us. This is a unique opportunity to purchase one of the first **Trueman Jagger** sons combined with some of the finest genetics from the heart of the Calogale herd. His full sister, **Calogale Nightingale** is lot 179 in the female section of the sale and both animals are highly recommended.

Visit website: www.calogale.co.uk

Lot Kedzlie Farm Ltd
102 SWALESMOOR NICK
 Born 25/01/2017
 Natural Calf

STW17-4996

UK 562070/304996

Sire *DINMORE GOLDENEYE DIR11-047

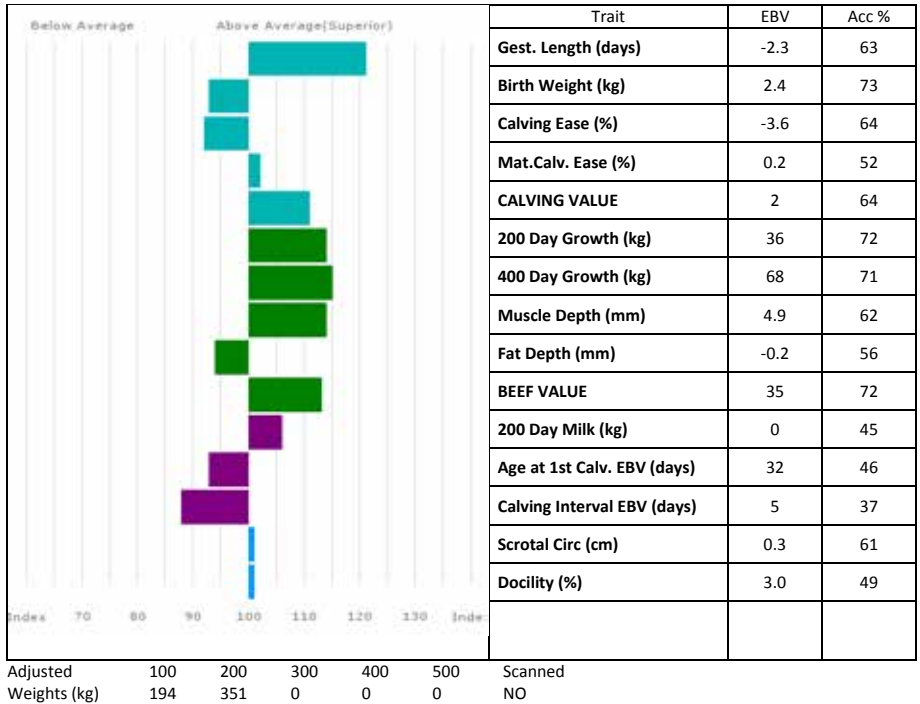
gs. RONICK HAWK DY92-026

gd. DINMORE ELLE DIR09-006

Dam DINMORE ELLIE DIR09-045

gs. WILODGE TONKA WEY02-002

gd. NEWSTART UPTOWNGIRL CKE03-039



SWALESMOOR NICK is bred from the famous **Sarkley Nellie** family; an exciting young herd sire prospect.

Lot Renton & Redden Partners
103 MEADOWRIG NEMO
 Born 19/01/2017 RLA17-0154 UK 564413/200154
 Natural Calf

Sire *KAPRICO GERMANDER SHJ11-006 **gs.** SYMPA 48-01-006-969
gd. KAPRICO ERICA SHJ09-005

Dam MEADOWRIG IZZY RLA13-0067 **gs.** FESTIVAL 19-34-079-179
gd. BROCKHURST FUZZY MFX10-227

Meadowrig herd won 2nd prize in the Scottish Club Medium Herd Competition 2017.

Lot Renton & Redden Partners
104 MEADOWRIG NIGEL
 Born 12/01/2017 RLA17-0153 UK 564413/100153
 Natural Calf

Sire *KAPRICO GERMANDER SHJ11-006 **gs.** SYMPA 48-01-006-969
gd. KAPRICO ERICA SHJ09-005

Dam MEADOWRIG JACKIE RLA14-0078 **gs.** FESTIVAL 19-34-079-179
gd. MISCOMBE EIDER BLX09-012

Meadowrig herd won 2nd prize in the Scottish Club Medium Herd Competition 2017.

Lot Renton & Redden Partners
105 MEADOWRIG NOAH
 Born 05/01/2017 RLA17-0148 UK 564413/300148
 Natural Calf

Sire *KAPRICO GERMANDER SHJ11-006 **gs.** SYMPA 48-01-006-969
gd. KAPRICO ERICA SHJ09-005

Dam MEADOWRIG INNOCENCE RLA13-0059 **gs.** FESTIVAL 19-34-079-179
gd. SARKLEY ELLACOMB PBO09-085

Meadowrig herd won 2nd prize in the Scottish Club Medium Herd Competition 2017.

Lot GN Martin
106 ASHMARA NATHAN
 Born 20/01/2017 MGP17-005 UK 9391941/1019-1
 Got by AI Embryo Calf

Sire *AMPERTAIN GIGOLO MGD11-051 **gs.** AMPERTAIN COMMANDER MGD07-046
gd. AMPERTAIN CRYSTAL MGD07-016

Dam CROCAN HONEY IE271495690334 **gs.** HALTCLIFFE DANCER RP08-753
gd. CROCAN DANDY IE271495650272

Lot 107	GN Martin ASHMARA NEXT Born 20/01/2017 Got by AI	MGP17-004	UK 9391941/1018-7
		Embryo Calf	
Sire	*HALTCLIFFE DOCTOR RP08-788	gs. ROSSIGNOL 36-15-030-976 gd. HALTCLIFFE USABELLE RP03-012	
Dam	CROCAN HONEY IE271495690334	gs. HALTCLIFFE DANCER RP08-753 gd. CROCAN DANDY IE271495650272	
Lot 108	GN Martin ASHMARA NIFTY Born 15/01/2017 Got by AI	MGP17-003	UK 9391941/1017-6
		Embryo Calf	Twin to Female
Sire	*ELITE FOREVER BRILL IE221062720723	gs. WILODGE VANTASTIC WEY04-037 gd. ARDLEA COILLTE IE221064550682	
Dam	CROCAN HONEY IE271495690334	gs. HALTCLIFFE DANCER RP08-753 gd. CROCAN DANDY IE271495650272	
Lot 109	J & S Allen DERG NOBLE Born 27/01/2017 Got by AI	DER17-5376	UK 9652349/0537-6
		Embryo Calf	
Sire	*LODGE HAMLET CBM12-346	gs. SAPHIR 36-15-082-247 gd. LODGE VIOLET CBM04-114	
Dam	ROUNDHILL INORA IE241280241441	gs. ELITE FOREVER BRILL IE221062720723 gd. ROUNDHILL ENORA IE241280211182	

DERG NOBLE carries one copy of NT821 and one copy of F94L gene.

Lot ES & E Norman

110 NORMAN NEMO

Born 18/03/2017

NBB17-1382

UK 101316/101382

Natural Calf

Sire NORMAN LARGO NBB15-1151**gs. PLUMTREE FANTASTIC CQE10-023****gd. NORMAN BETRYS NBB06-019****Dam NORMAN INNOCENT NBB13-1057****gs. CLARAGH FRANCO RJT10-013****gd. NORMAN FRANCIS NBB10-034**

NORMAN NEMO is the first animal to be offered for sale by **Norman Largo**, who has proved to have a short gestation and very easy calving. **Norman Largo** is maternal brother to **Norman Ely**.



NORMAN NEMO – Lot 110

Lot ES & E Norman
111 NORMAN NICK
 Born 17/01/2017 NBB17-1365 UK 101316/501365
 Got by AI Natural Calf

Sire **SARKLEY GODDARD PBO11-145** gs. OBJAT 19-30-299-413
 gd. SARKLEY TOYA PBO02-244

Dam **NORMAN JESSIEJ NBB14-1140** gs. CLARAGH FRANCO RJT10-013
 gd. NORMAN BESSIE NBB06-020

Lot ES & E Norman
112 NORMAN NOBLEMAN
 Born 25/04/2017 NBB17-1404 UK 101316/201404
 Natural Calf

Sire **NORMAN LARGO NBB15-1151** gs. PLUMTREE FANTASTIC COE10-023
 gd. NORMAN BETRYS NBB06-019

Dam **NORMAN INDULGE NBB13-1040** gs. CLARAGH FRANCO RJT10-013
 gd. NORMAN CAMEL NBB07-047

Lot Victor Keys
113 ASHVIEW NECTOR
 Born 05/02/2017 KEK17-9935 UK 9631492/0993-5
 Got by AI Natural Calf

Sire **NETHERHALL JACKPOT KCI14-1911** gs. REQUIN 36-15-031-134
 gd. CLOUGHHEAD AINSI HCX05-356

Dam **TOGHERDOO GRACE KCY11-003** gs. SYMPA 48-01-006-969
 gd. MILLGATE BETTY LFR06-026

ASHVIEW NECTOR is a long, clean calf with a great end and temperament.

Lot Victor Keys
114 ASHVIEW NEXT
 Born 25/01/2017 KEK17-9913 UK 9631492/0991-3
 Got by AI Embryo Calf

Sire **CHAUMEIL 19-32-967-173** gs. OBJAT 19-30-299-413
 gd. UTILE 19-31-849-766

Dam **ASHMARA CLASSYGIRL MGP07-015** gs. ROCKY 36-15-030-964
 gd. CRACROP ULTIMATEGIRL SMR03-096

ASHVIEW NEXT has plenty of width and style. **Ashmara Classygirl** (*dam*) has bred bulls selling to £8,000, £6,000 and 6,000gns.

Lot W Barron

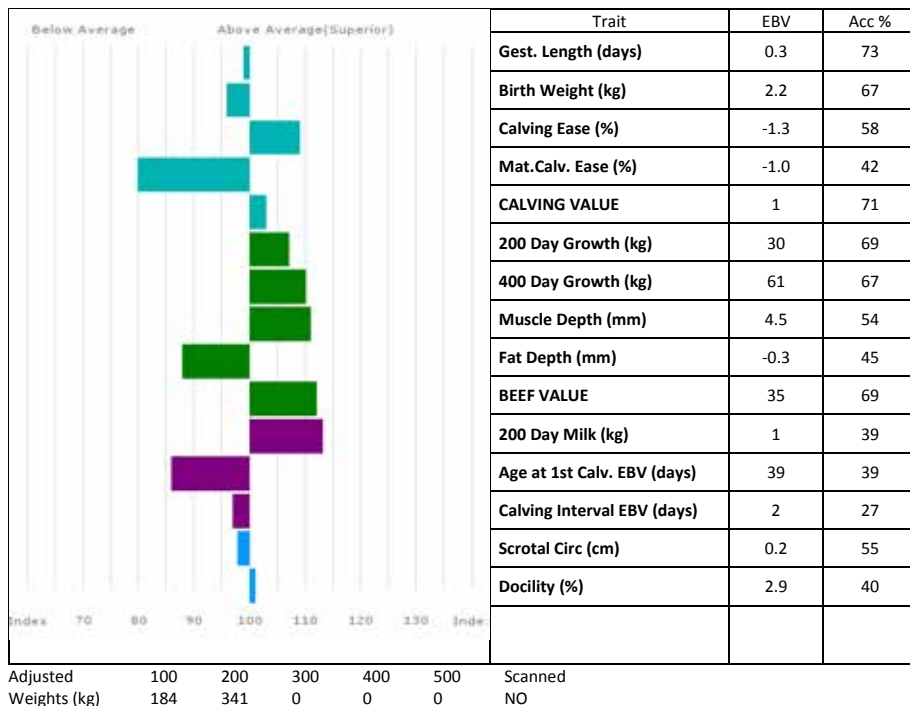
115 BARRONS NAJINSKI

Born 30/01/2017

BNI17-0382

UK 105586/200382

Natural Calf

Sire HOMEBYRES JAMIE LAP14-1364**gs. LOWERFFRYDD EMPIRE EBQ09-008****gd. HOMEBYRES GIGI LAP11-012****Dam BARRONS ICHO BNI13-274****gs. WILODGE CERBERUS WEY07010****gd. BARRONS ECHO BNI09-175**

BARRONS NAJINSKI has easy calving bloodlines on both sides of his pedigree and a BV of 35 putting him in the top 25%.

Lot W Barron
116 BARRONS NAPOLEON
 Born 26/01/2017
 Got by AI

BNI17-0381

UK 105586/100381

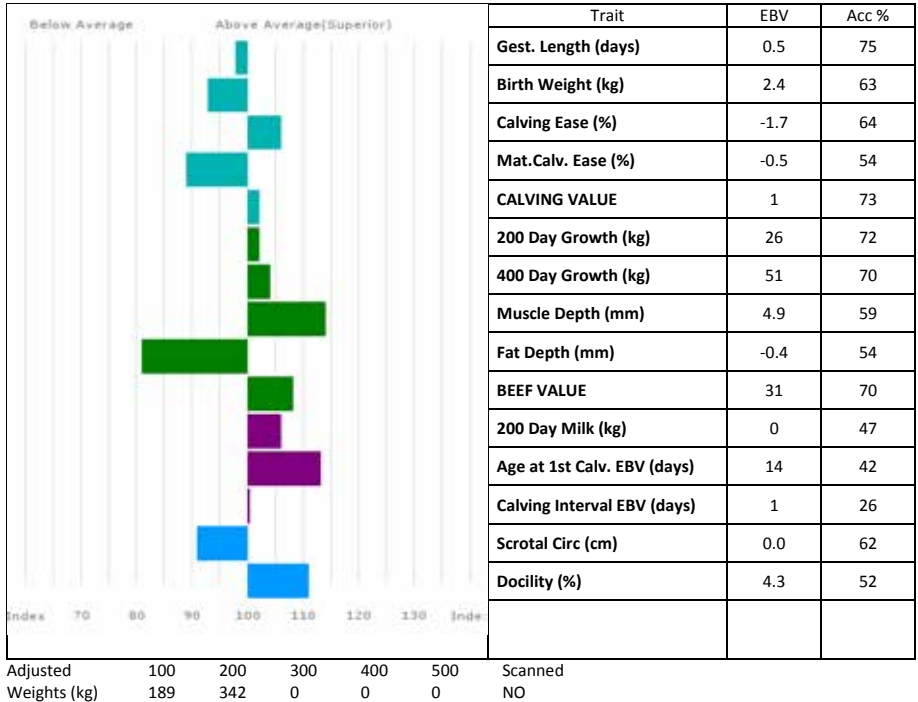
Natural Calf

Sire *LODGE HAMLET CBM12-346

gs. SAPHIR 36-15-082-247
 gd. LODGE VIOLET CBM04-114

Dam BARRONS GEMMA BNI11-219

gs. AMPERTAINE COMMANDER MGD07046
 gd. BARRONS BLUEBELL BNI06117



BARRONS GEMMA (*dam*) has a calving value of 2 putting her in the top 25%. **Barron Napoleon's** pedigree has easy calving on both sides.

Lot W Barron

117 BARRONS NINJA

Born 04/01/2017

Got by AI

BNI17-0372

UK 105586/600372

Natural Calf

Sire *LODGE HAMLET CBM12-346

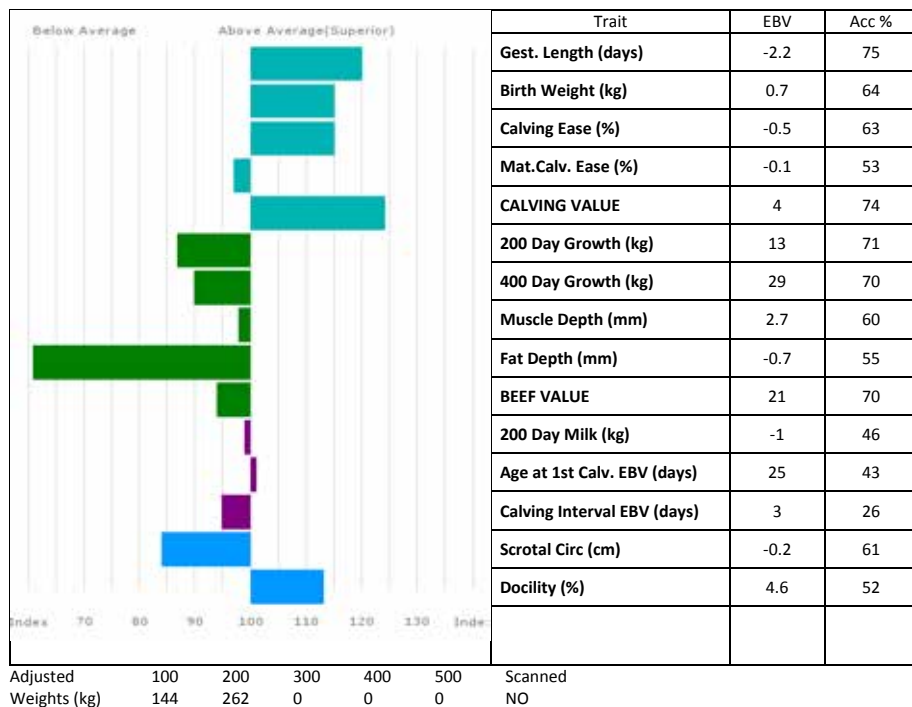
gs. SAPHIR 36-15-082-247

gd. LODGE VIOLET CBM04-114

Dam BARRONS JULIPA BNI14-0290

gs. LOOSEBEARE FANTASTIC QA10074

gd. BARRONS TULIP BNI02-059



BARRONS JULIPA (*dam*) has a calving value of 3 putting her in the top 10%. **Barrons Ninja** should be ideal for use on heifers.

Lot Andrew Orr

118 LOMOND NINJA

Born 27/01/2017

Got by AI

ODG17-0021

UK 547305/200021

Natural Calf

Sire *LODGE HAMLET CBM12-346

gs. SAPHIR 36-15-082-247

gd. LODGE VIOLET CBM04-114

Dam SPITTALTON HUNA BKY12-060

gs. LODGE EQUAL CBM09-259

gd. SPITTALTON UNA BKY03-001

Lot 119	J & A Milroy CAIRNVALLEY NACHO Born 10/02/2017 Natural Calf	MXS17-0770	UK 580493/700770
Sire	ANSIDE FIELDMASTER IF10-542	gs. FREWSTOWN BREAKDANCE FBH06-164 gd. ANSIDE URANIA IF03-179	
Dam	CAIRNVALLEY FERN MXS10-001	gs. BRONTEMOOR APPRENTICE PCI05-061 gd. WINDYHILL ROUSSE BCK00-031	
Lot 120	J & A Milroy CAIRNVALLEY NODDY Born 15/04/2017 Natural Calf	MXS17-0792	UK 580493/100792
Sire	ANSIDE FIELDMASTER IF10-542	gs. FREWSTOWN BREAKDANCE FBH06-164 gd. ANSIDE URANIA IF03-179	
Dam	CAIRNVALLEY HEATHER MXS12-003	gs. CARMORN DAUPHIN MCN08-010 gd. CAIRNVALLEY ERICA MXS09-001	
Lot 121	Norman Cruickshank COWFORD NIGHT Born 05/01/2017 Natural Calf	CUE17-1323	UK 560770/101323
Sire	*ROUNDHILL HAMLET IE241280241367	gs. ACAJOU 19-32-348-458 gd. ROUNDHILL EGIROFLEE IE241280281164	
Dam	CRAGGANE RACHEL IE131448370193	gs. MOUSTIC 12-96-163-972 gd. CRAGGANE MAJELLA TPBL-0004M	
Lot 122	TW Hutchinson KINGSHAUGH NITRO Born 14/04/2017 Natural Calf	HOL17-0300	UK 104638/300300
Sire	WILODGE INCHBYINCH WEY13-1204	gs. LOOSEBEARE DIEGO QA08-045 gd. VANILLE 19-31-949-423	
Dam	GLENROCK HONEY IE12-067	gs. CASTLEVIEW DELOITTE IE191567170496 gd. GLENROCK ESCALA IE09-920	

Lot TW Hutchinson
123 KINGSHAUGH NUGGET
 Born 30/04/2017 HOL17-0306 UK 104638/200306
 Got by AI Natural Calf

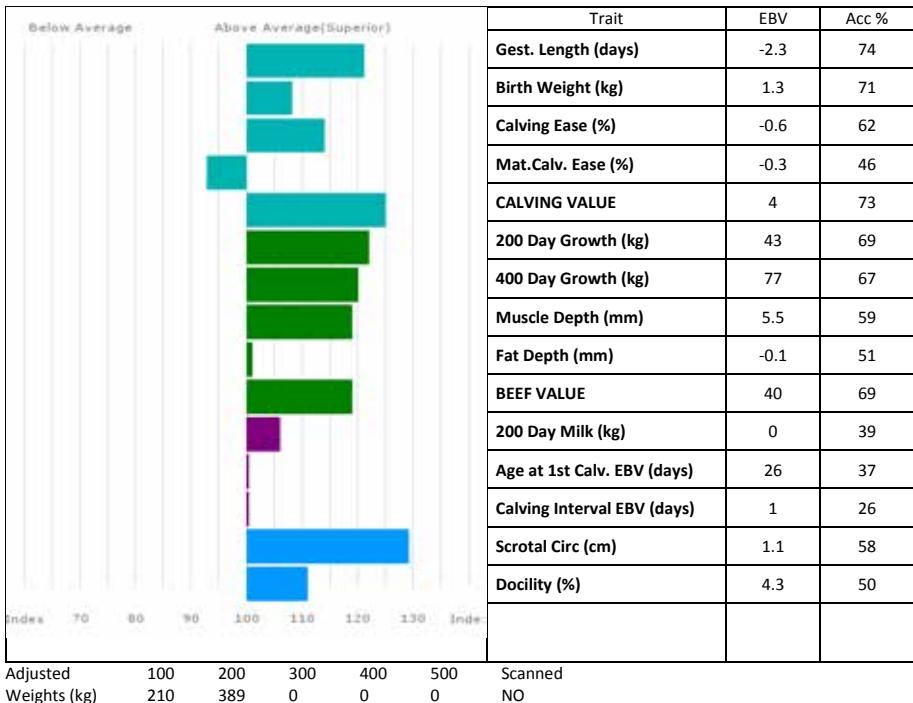
Sire *GLENROCK HUMDINGER IE12-096
 gs. SYMPA 48-01-006-969
 gd. GLENROCK SPANGLE IE01-155

Dam KINGSHAUGH CLASSY HOL07-005
 gs. VIVALDI 36-15-015-938
 gd. TAMISE 22-23-361-829

Lot DG Green
124 DERRIAGHY NODDY
 Born 20/04/2017 GGU17-1556 UK 9041936/155-6
 Got by AI Natural Calf

Sire NORMAN ELY NBB09-004
 gs. SAPHIR 36-15-082-247
 gd. NORMAN BETRYS NBB06-019

Dam DERRIAGHY HERMONIE GGU12-1022
 gs. AMPERTAINNE COMMANDER MGD07046
 gd. DINMORE ELVIRA DIR09-036



DERRIAGHY NODDY is from two very easy calving breeding lines. **Noddy** has great shape, combined with a wonderful temperament.

Lot Bruce T Goldie
125 GOLDIES NECTAR
 Born 26/01/2017
 Got by AI

GS17-1714

UK 581575/501714

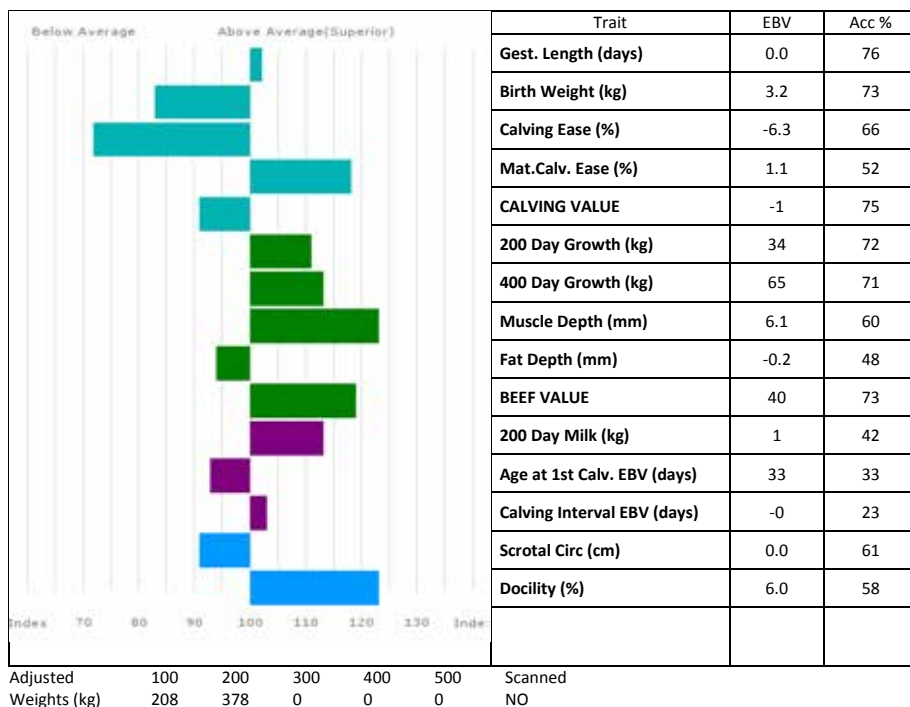
Embryo Calf

Sire **NETHERHALL JACKPOT KCI14-1911**

gs. REQUIN 36-15-031-134
 gd. CLOUGHHEAD AINSI HCX05-356

Dam **GOLDIES JO GS14-1477**

gs. AMPERTAINE GIGOLO MGD11-051
 gd. GOLDIES FAIRYTALE GS101130



GOLDIES FAIRYTALE (*gdam*) also bred **Goldies James** 21,000gns and **Goldies Jessica** 10,000gns.

Lot AJ Mason
126 ODDACRES NIMROD
 Born 25/03/2017
 Natural Calf

MUC17-005

UK 124802/500478

Sire ***GALLOIS 36-15-352-144**

gs. CHARMEUR 23-08-902-428
 gd. NOISETTE 36-97-009-220

Dam **ODDACRES APRIL MUC05-014**

gs. TITAN 36-15-013-723
 gd. TEOS 19-31-408-023

ODDACRES APRIL (*dam*) is a very well bred 12 year old cow. **Oddacres Nimrod** has **Patureau** breeding on both sides of his pedigree. **Titan** (*gsire*) is out of a Jacot's full sister.

Lot AJ Mason

127 ODDACRES NORMAN

Born 20/03/2017

MUC17-001

UK 124802/100474

Natural Calf

Sire *GALLOIS 36-15-352-144**gs. CHARMEUR 23-08-902-428****gd. NOISETTE 36-97-009-220****Dam IRLANDE 19-37-333-345****gs. ECLAIR 19-33-422-694****gd. VEDETTE 19-31-939-408**

ODDACRES NORMAN with his dam, **Irlande**, won 3rd prize cow and calf NELBC Herd Competition 2017. **Irlande (dam)** is out of the same dam as renowned French AI bull Correze.

Lot PJ Henshall

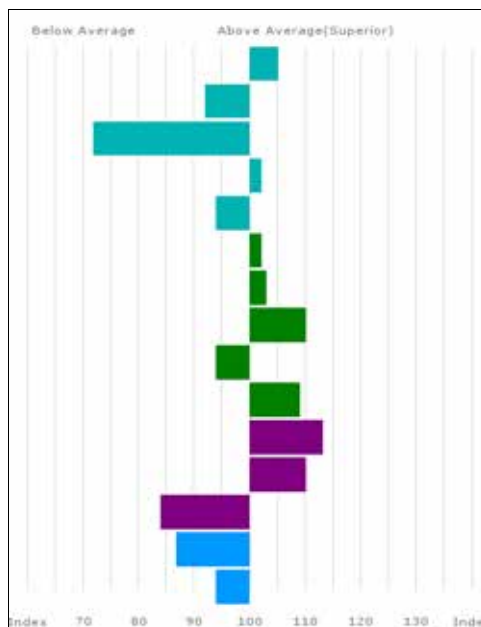
128 RINGWAY NIAGARA

Born 08/01/2017

HCY17-1303

UK 581823/101303

Natural Calf

Sire RINGWAY JENSEN HCY14-1115**gs. HALTCLIFFE HERCULES RP92-009****gd. RINGWAY GLENDA HCY11-871****Dam RINGWAY IZARRA HCY13-1049****gs. RINGWAY FOGGY HCY10-829****gd. RINGWAY FAIRUZA HCY10-814**

Adjusted Weights (kg) 100 0 200 0 300 463 400 0 500 0 Scanned NO

Lot PJ Henshall
129 RINGWAY NICKEL
 Born 19/01/2017
 Natural Calf

HCY17-1305

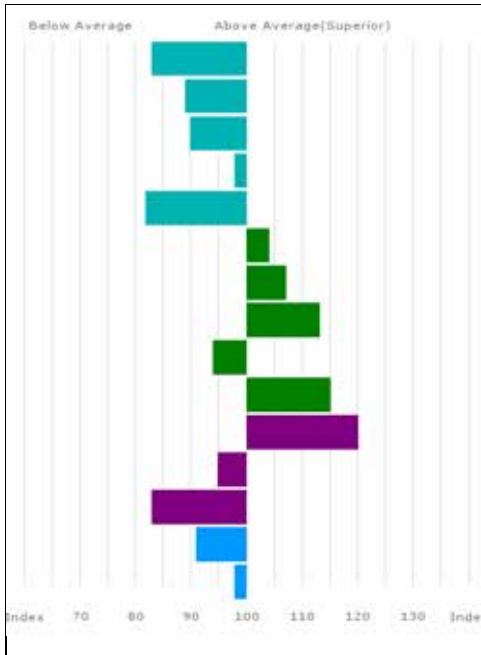
UK 581823/301305

Sire **RINGWAY JENSEN HCY14-1115**

gs. HALTCLIFFE HERCULES RP92-009
 gd. RINGWAY GLENDA HCY11-871

Dam **RINGWAY ICEQUEEN HCY13-1043**

gs. HALTCLIFFE VERMOUNT RP04-042
 gd. RINGWAY ALICE HCY05-432



Trait	EBV	Acc %
Gest. Length (days)	2.2	71
Birth Weight (kg)	2.7	51
Calving Ease (%)	-3.9	50
Mat. Calv. Ease (%)	0.0	41
CALVING VALUE	-2	69
200 Day Growth (kg)	28	53
400 Day Growth (kg)	56	54
Muscle Depth (mm)	4.7	49
Fat Depth (mm)	-0.2	47
BEEF VALUE	37	54
200 Day Milk (kg)	2	41
Age at 1st Calv. EBV (days)	31	41
Calving Interval EBV (days)	7	32
Scrotal Circ (cm)	0.0	47
Docility (%)	2.5	39

Adjusted 100 200 300 400 500
 Weights (kg) 191 339 487 0 0

Scanned
 NO

Lot R & J Graham

130 GRAHAM'S NASHVILLE

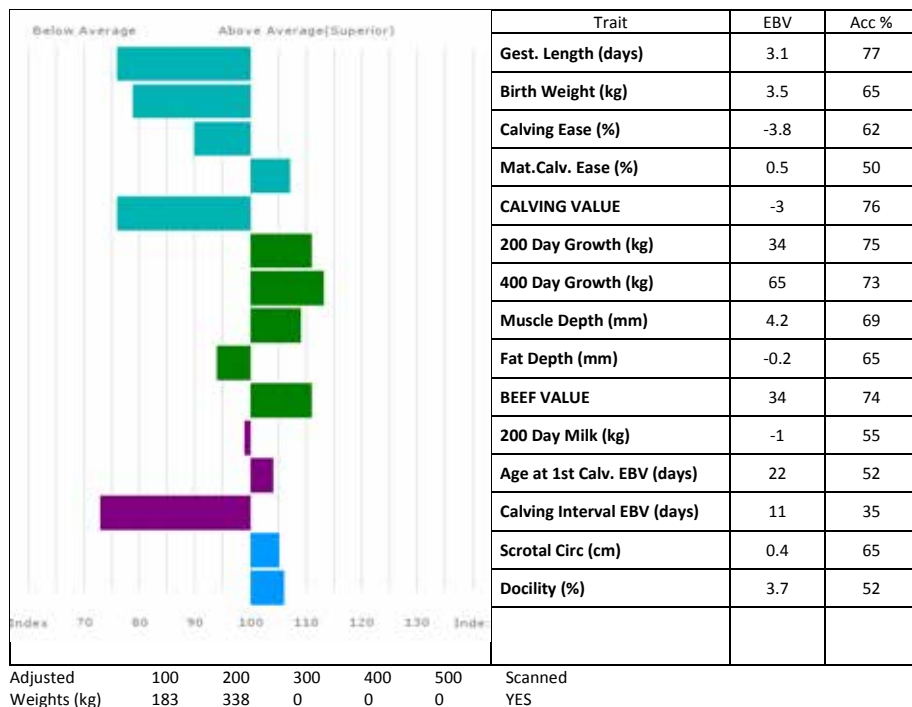
Born 11/01/2017

GV17-975

UK 542883/700975

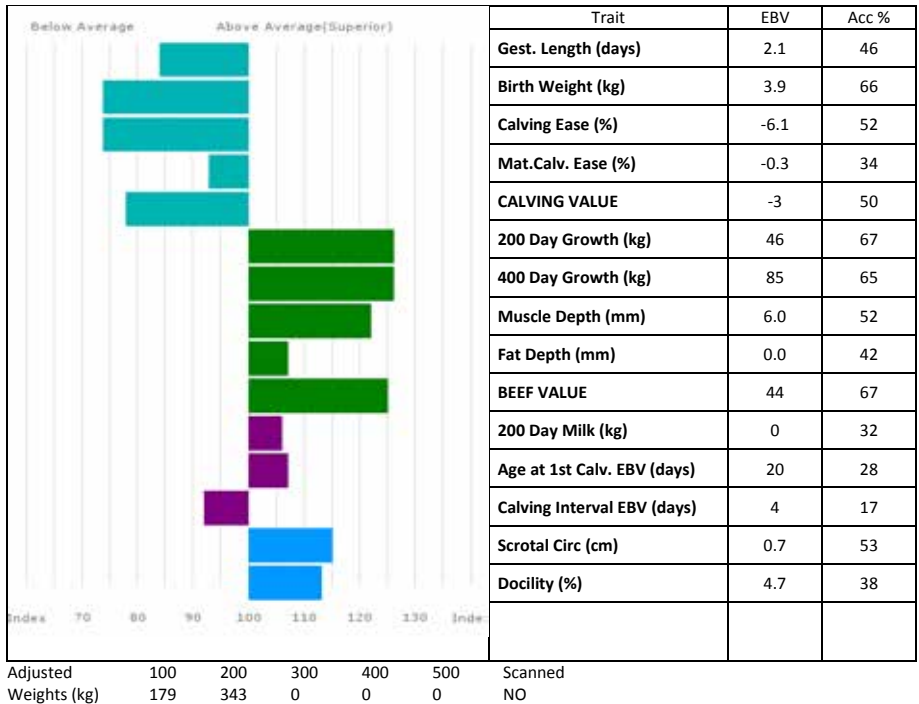
Got by AI

Embryo Calf

Sire *CLARAGH FRANCO RJT10-013**gs. WILODGE VANTASTIC WEY04-037****gd. HALTCLIFFE AVON RP05-014****Dam GRAHAM'S COFFEE GV07-440****gs. MILLINGTON VASCULAR MRJ04826****gd. NITOUCHE 23-97-060-279**

GRAHAM'S NASHVILLE is a brother to **Grahams Lorenzo** 40,000gns, **Grahams Lilly** 32,000gns and **Grahams Lizzie** 16,500gns. **Grahams Nashville** won 1st prize also Junior Male Champion and Reserve Junior Champion at Stars of the Future Calf Show. **Nashville** was a member of the Continental and Overall Junior Pairs Champions. He has been myostatin tested and carries NT821 + Q204x genes.

Lot 131	M Burns SHAWS NIRVANA Born 17/04/2017 Got by AI	BST17-001	UK 586971/600033
		Natural Calf	
Sire	*GRAHAMS UNBEATABLE GV03-176	gs. GRAHAMS PONCHO GV99-046 gd. HABITUDE 23-92-013-639	
Dam	SHAWS FERNE BST10-004	gs. OBJAT 19-30-299-413 gd. LOWBARN BENNYA NH06-017	
Lot 132	A & J Gammie WESTPIT NOVA Born 17/03/2017 Natural Calf	GAZ17-0150	UK 527854/100150
Sire	*JALEX ITSALLGOOD AFW13-7824	gs. SWARLAND EDDIE SOH09-010 gd. TYRONE DULANI WKX08-002	
Dam	WESTPIT JULIE GAZ14-0068	gs. NETHERHALL DOUBLESEVEN KCI08039 gd. GREENWELL DIOR NK08032	



WESTPIT NOVA is a very muscular son of **Jalex Itsallgood** who's first two sons have averaged 12,000gns. **Nova** won 2nd prize in the Scottish Club calf born 2017 Herd Competition and carries 2 copies of the NT821 muscle gene; he is a heifers calf from one of the best families in the herd

Lot JA Murray

133 HANEVE NOAH

Born 10/01/2017

Got by AI

MOS17-1230

Natural Calf

UK 105600/301230

Sire *LODGE HAMLET CBM12-346**gs.** SAPHIR 36-15-082-247**gd.** LODGE VIOLET CBM04-114**Dam HANEVE HOLLY MOS12-141****gs.** IRONSTONE COLONEL SDS07-069**gd.** HANEVE CANDY MOS07-061

HANEVE NOAH is a very correct son of **Lodge Hamlet** out of a meaty, easily fleshed **Ironstone Colonel** daughter. **Noah** was a small calf at birth with a short gestation of 282 days.

Lot A & W Watson

134 SAUNDERS NELSON

Born 30/04/2017

Natural Calf

WFQ17-0753

UK 107576/500753

Sire WILODGE INSPECTOR WEY13-1254**gs.** BRANCEILLE 19-32-592-744**gd.** WILODGE CAREAM WEY07-042**Dam SAUNDERS JADE WFQ14-0669****gs.** SAUNDERS DIMITRI WFQ08-162**gd.** SAUNDERS SWEETPEA WFQ01-034

SAUNDERS NELSON is a heifers calf by **Wilodge Inspector** who is an easy calving sire.

Lot A & W Watson

135 SAUNDERS NEVADA

Born 28/04/2017

Natural Calf

WFQ17-0751

UK 107576/300751

Sire WILODGE INSPECTOR WEY13-1254**gs.** BRANCEILLE 19-32-592-744**gd.** WILODGE CAREAM WEY07-042**Dam SAUNDERS USADORA WFQ03-061****gs.** SAUNDERS PACIFIC WFQ99-023**gd.** SAUNDERS PETUNIA WFQ99-020

SAUNDERS NEVADA is out of the same dam line as **Saunders Bandit** 5200gns Carlisle Nov 2007 and **Saunders Imperial** 5200gns Carlisle May 2015; both of who are crossing very well.

Lot A & W Watson

136 SAUNDERS NIMROD

Born 11/05/2017

Natural Calf

WFQ17-0761

UK 107576/600761

Sire WILODGE INSPECTOR WEY13-1254**gs.** BRANCEILLE 19-32-592-744**gd.** WILODGE CAREAM WEY07-042**Dam SAUNDERS HANNAH WFQ12-262****gs.** CENTRAL DART GBL08-001**gd.** SAUNDERS BUTANO WFQ06-111

Lot	A & W Watson		
137	SAUNDERS NULALA		
	Born 03/05/2017	WFQ17-0755	UK 107576/700755
	Natural Calf		
Sire	*SAUNDERS DIMITRI WFQ08-162	gs.	JUNIOR 19-94-012-999
		gd.	SAUNDERS VERITY WFQ04-074
Dam	SAUNDERS ULALA WFQ03-064	gs.	SAUNDERS PACIFIC WFQ99-023
		gd.	SAUNDERS PIMPERNEL WFQ99022

SAUNDERS NULALA is full brother to **Saunders lualua** sold 5000gns Weaned Calf Sale Carlisle Dec 2015 and **Saunders Mulala** sold 4500gns Weaned Calf Sale Carlisle Dec 2016.

HEIFER CALVES

Lot R & J Graham

138 GRAHAMS NATALIE

Born 01/01/2017

Got by AI

GV17-0972

UK 542883/400972

Embryo Calf

Sire *CLARAGH FRANCO RJT10-013

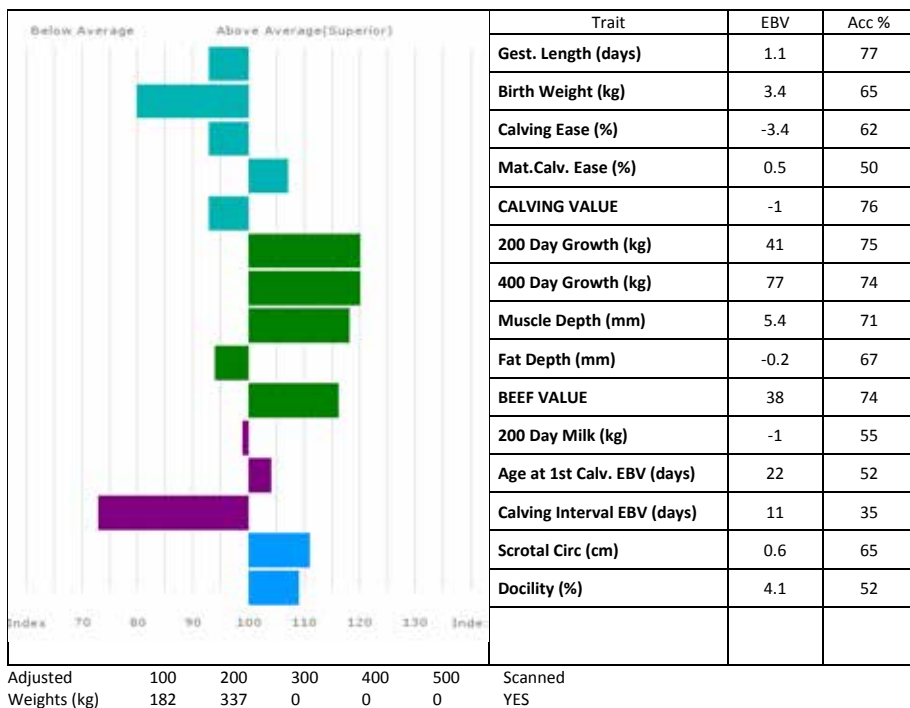
gs. WILODGE VANTASTIC WEY04-037

gd. HALTCLIFFE AVON RP05-014

Dam GRAHAMS COFFEE GV07-440

gs. MILLINGTON VASCULAR MRJ04826

gd. NITOUCHE 23-97-060-279



GRAHAMS NATALIE is full sister to **Grahams Lorenzo** 40,000gns sold to Wilodge Herd, **Grahams Lilly** 32,000gns sold to Mystyle Herd and **Grahams Lizzie** 16,500gns sold to Tweedale Herd. **Natalie** won 1st prize, Junior Female, Overall Limousin Junior Champion and Interbreed Junior Champion Stars of the Future Calf Show. **Natalie** was a member of the Continental and Overall Junior Pairs Champion. With 200 + 400 day growth rates that rank her in top 1% of the breed and a beef value of 38 also in top 10%. She has been myostatin tested and carries NT821 + Q204X genes.

Lot R & J Graham
139 GRAHAMS NEENA
 Born 12/02/2017
 Got by AI

GV17-0982

UK 542883/700982

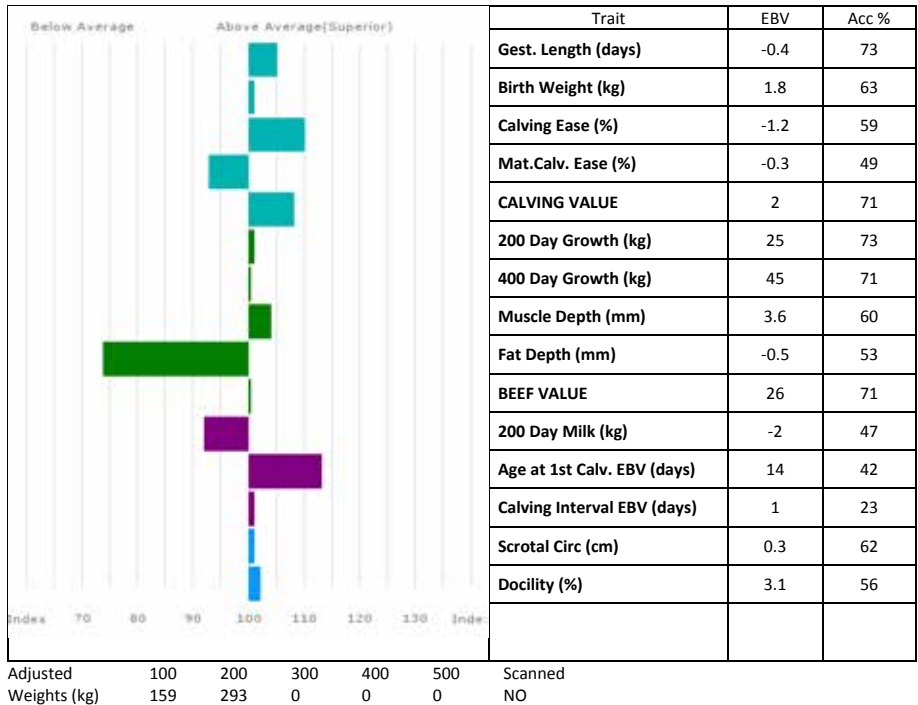
Natural Calf

Sire *LODGE HAMLET CBM12-346

gs. SAPHIR 36-15-082-247
 gd. LODGE VIOLET CBM04-114

Dam SAUNDERS EDWINA WFQ09-167

gs. ANSIDE ARNIE IF05-264
 gd. SAUNDERS SWEETPEA WFQ01034



GRAHAMS NEENA, a daughter of **Lodge Hamlet**, is a stylish young heifer that will be ideal for summer showing next year.

Lot R & J Graham

140 GRAHAMS NOVA

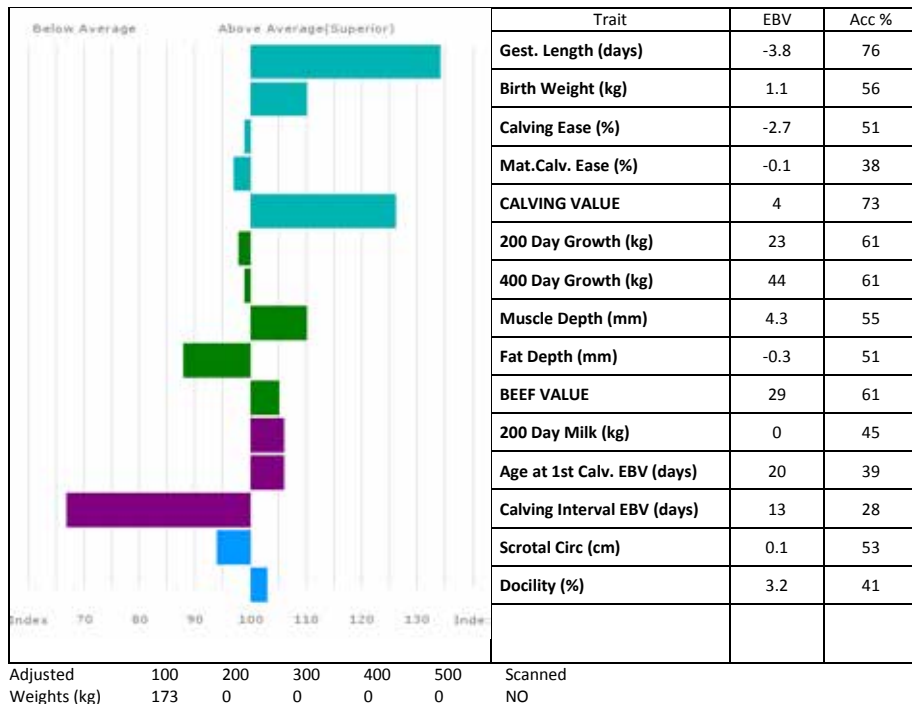
Born 07/04/2017

Got by AI

GV17-0990

UK 542883/100990

Embryo Calf

Sire *KILCOR ICEMAN IE291598920446**gs. FIELDSON ALFY FCE05-384****gd. KILCOR FROSTIE IE291598920363****Dam GRAHAMS COFFEE GV07-440****gs. MILLINGTON VASCULAR MRJ04-826****gd. NITOUCHE 23-97-060-279**

GRAHAMS NOVA is sired by 28,000gns **Kilcor Iceman** and out of the impressive **Grahams Coffee** – dam of **Grahams Lorenzo** 40,000gns, **Grahams Murphy** 37,000gns, **Grahams Lilly** 32,000gns. **Nova's** first outing at Borderway Agri-Expo she won 1st prize in the Baby Beef class and Reserve Overall Baby Beef Champion. She ranks in the top 1% of the breed for both gestation length and calving value.

Nova has huge potential that oozes style, presence and breed character. One to watch in the future!

Lot P Dawes
141 DINMORE NAVANDA
Born 22/03/2017 DIR17-1229 UK 311535/501229
Natural Calf

Sire DINMORE JONESY DIR14-0900 gs. REQUIN 36-15-031-134
gd. DINMORE ELLE DIR09-006

Dam DINMORE VANDA DIR04-022 gs. OXYGENE 12-98-171-453
gd. PEASLEYHILL RONDA BLE00-026

DINMORE NEVANDA is the first progeny to be sold from the much admired **Dinmore Jonesy**. **Dinmore Vanda** (*dam*) has bred heifers to 7200gns, Dinmore Ganda, at the herds first production sale.

Lot P Dawes

142 DINMORE NEFERTITI

Born 12/01/2017

DIR17-1214

UK 311535/401214

Got by AI

Embryo Calf

Sire *AMPERTAINE GIGOLO MGD11-051**gs.** AMPERTAINE COMMANDER MGD07-046**gd.** AMPERTAINE CRYSTAL MGD07-016**Dam TRUEMAN GRAZIA SLN11-006****gs.** HALTCLIFFE VERMOUNT RP04042**gd.** COOKSTOWN B1425 IE281243471425

DINMORE NEFERTITI is full sister to **Trueman Jagger** the world record priced bull!! **Nefertiti** carries one copy of NT821 and one of Q204x and is a very stylish heifer.

Lot ML Thomas

143 NEBO NON

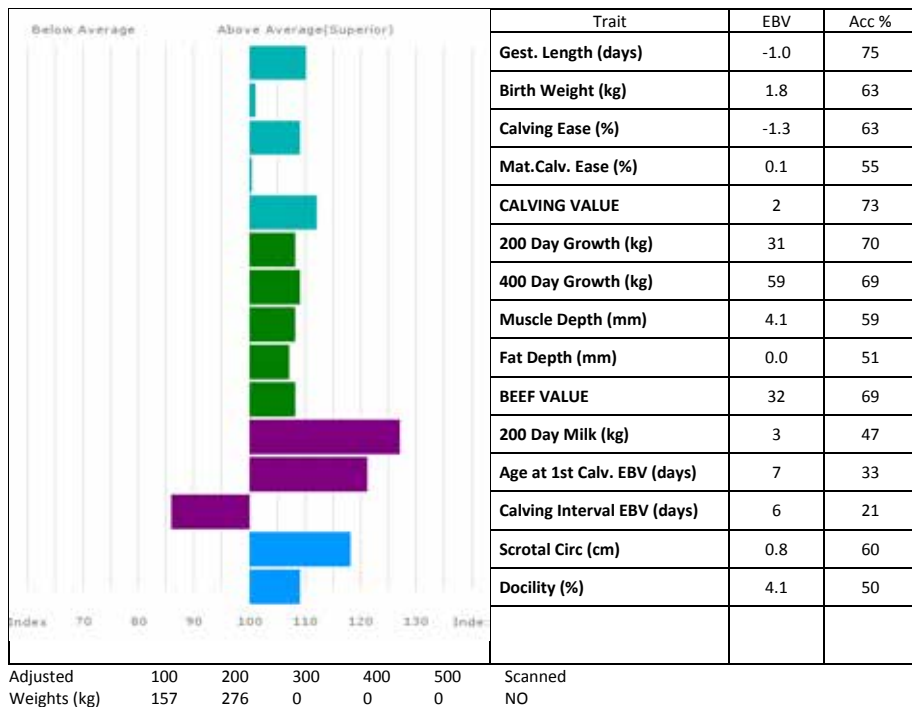
Born 01/01/2017

TFQ17-0390

UK 704967/500390

Got by AI

Natural Calf

Sire *AMPERTAINE GIGOLO MGD11-051**gs.** AMPERTAINE COMMANDER MGD07-046**gd.** AMPERTAINE CRYSTAL MGD07-016**Dam NEBO UNA TFQ03-002****gs.** STACEY RALPH WEW00-007**gd.** KIDSSNAPE HEATHER PAE92-024

NEBO UNA (dam) also bred **Nebo Equador** sold Carlisle 2011 to Westhall Herd for 13,000gns.

Lot VAS & TVS Corbett
144 TEMESIDE NALA

Born 02/01/2017
Got by AI

CCU17-504

UK 721094/200504

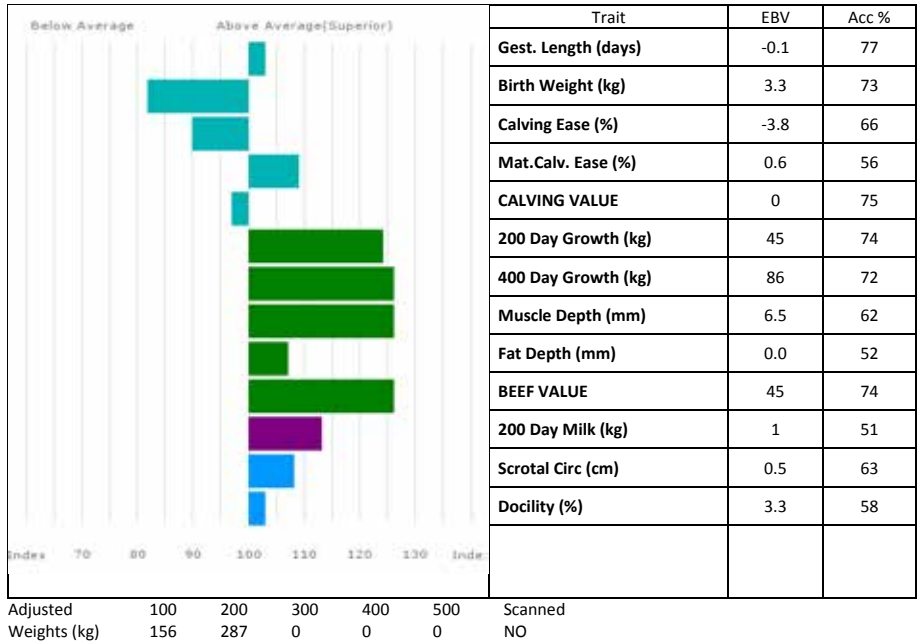
Embryo Calf

Sire *AMPERTAINÉ FOREMAN MGD10-039

gs. WILODGE CERBERUS WEY07-010
gd. AMPERTAINÉ BATHSHEBA MGD06-032

Dam TEMESIDE GERDA CCU11-313

gs. ROSECROFT DYNAMITE WFD08-102
gd. TEMESIDE VALDA CCU04-142



This animal has been genotyped for Carcase and Maternal trait GEBVs

TEMESIDE NALA comes from one of the best cow families in the herd. Full sister to **Temeside Jenga** and **Temeside Lionking** who have both been shown successfully winning many Championships at county level and were Reserve Champion Pairs in Limousin Section at RWS. **Temeside Gerda** (*dam*) won 1st prize RWS as was her sire **Rosecroft Dynamite** and first son **Temeside JustWilliam**.

Lot Thomas Clancy
145 COLLEGELAND NANCY

Born 31/01/2017
Got by AI

CTR17-0156

UK 9185289/0015-6

Embryo Calf

Sire *AMPERTAINÉ ELGIN MGD09-039

gs. GLENROCK VENTURA IE04-432
gd. AMPERTAINÉ CARLA MGD07-036

Dam CULNAGECHAN HALFPENNY HQG12-004

gs. CASIMIR 23-07-278-647
gd. CULNAGECHAN EYECATCHER HQG09-028

Lot Thomas Clancy

146 COLLEGELAND NEWPENNY

Born 09/03/2017

CTR17-167

UK 9185289/0016-7

Got by AI

Embryo Calf

Sire *AMPERTAINÉ FOREMAN MGD10-039**gs. WILODGE CERBERUS WEY07-010****gd. AMPERTAINÉ BATHSHEBA MGD06-032****Dam CULNAGECHAN HALFPENNY HQG12-004****gs. CASIMIR 23-07-278-647****gd. CULNAGECHAN EYECATCHER HQG09-028**

Lot J & A Callion

147 MELBREAK NANTES

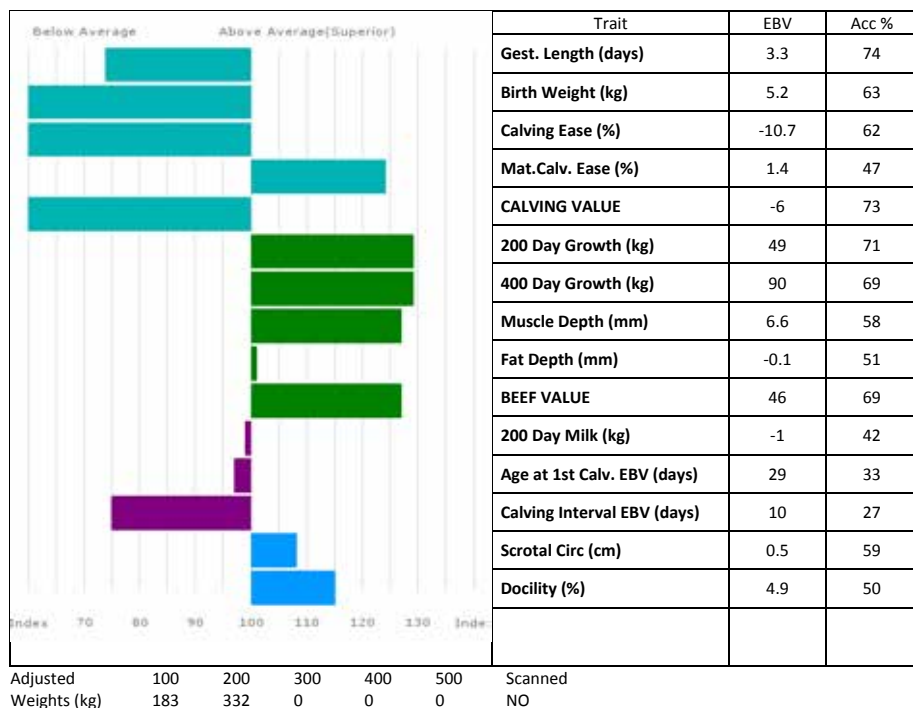
Born 01/02/2017

CMS17-1637

UK 9636565/0163-7

Got by AI

Embryo Calf

Sire *TRUEMAN JAGGER SLN14-6436**gs. AMPERTAINÉ GIGOLO MGD11-051****gd. TRUEMAN GRAZIA SLN11-006****Dam MELBREAK GENEVA CMS11-001****gs. WILODGE VANTASTIC WEY04037****gd. LYVENNET PARIS BJJ99004**

MELBREAK GENEVA (dam) is full sister to **Melbreak FairyLight** sold Red Ladies Carlisle Dec 2011 9000gns. For more information visit the Herd Facebook page: Melbreak Limousin & Charolais.

Lot J & A Callion

148 MELBREAK NARBONNE

Born 01/02/2017

CMS17-1641

UK 9636565/0164-1

Got by AI

Embryo Calf

Sire *TRUEMAN JAGGER SLN14-6436

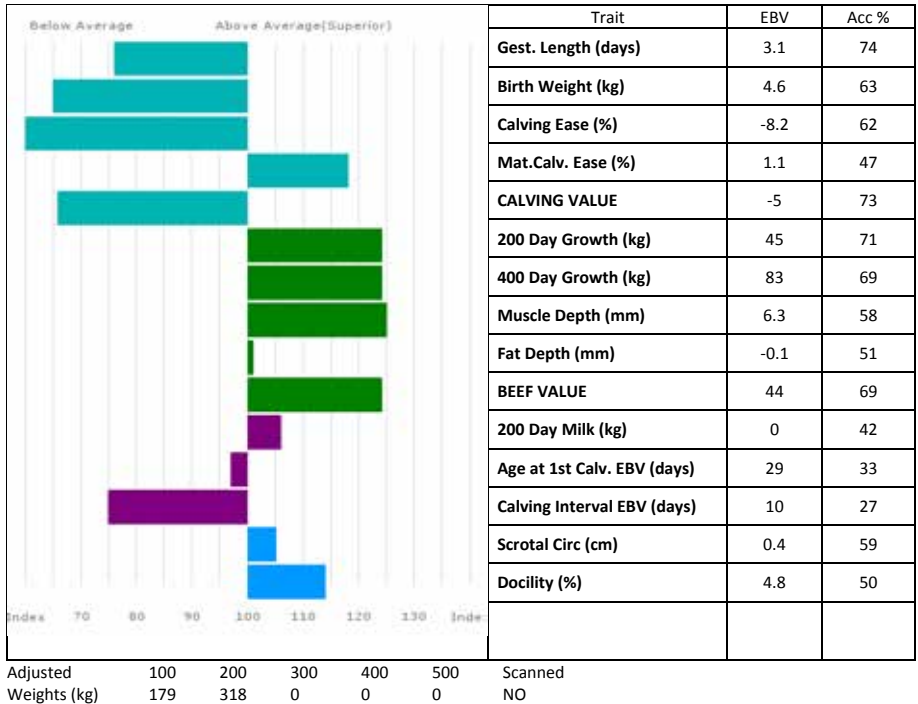
gs. AMPERTAINE GIGOLO MGD11-051

gd. TRUEMAN GRAZIA SLN11-006

Dam MELBREAK GENEVA CMS11-001

gs. WILODGE VANTASTIC WEYO4037

gd. LYVENNET PARIS BJJ99004



MELBREAK GENEVA (*dam*) is full sister to **Melbreak Fairylight** sold Red Ladies Carlisle Dec 2011 9000gns. For more information visit the Herd Facebook page: Melbreak Limousin & Charolais.

Lot J & A Callion

149 MELBREAK NASSIET

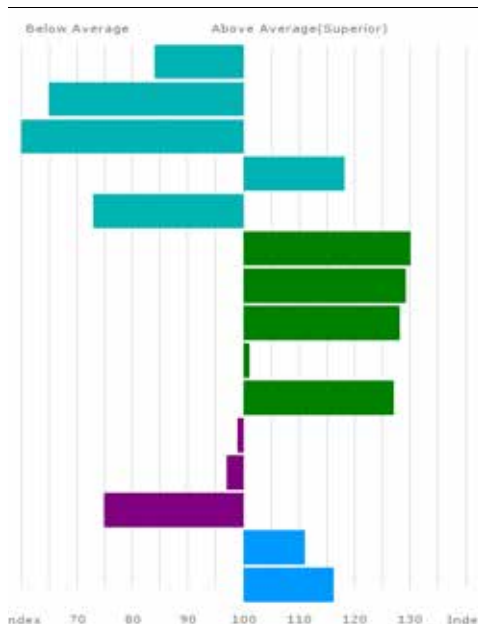
Born 28/01/2017

CMS17-1604

UK 9636565/0160-4

Got by AI

Embryo Calf

Sire *TRUEMAN JAGGER SLN14-6436**gs. AMPERTAINÉ GIGOLO MGD11-051****gd. TRUEMAN GRAZIA SLN11-006****Dam MELBREAK GENEVA CMS11-001****gs. WILODGE VANTASTIC WEY04037****gd. LYVENNET PARIS BJJ99004**

Trait	EBV	Acc %
Gest. Length (days)	2.1	74
Birth Weight (kg)	4.6	63
Calving Ease (%)	-8.1	62
Mat. Calv. Ease (%)	1.1	47
CALVING VALUE	-4	73
200 Day Growth (kg)	50	71
400 Day Growth (kg)	91	69
Muscle Depth (mm)	6.8	58
Fat Depth (mm)	-0.1	51
BEEF VALUE	46	69
200 Day Milk (kg)	-1	42
Age at 1st Calv. EBV (days)	29	33
Calving Interval EBV (days)	10	27
Scrotal Circ (cm)	0.6	59
Docility (%)	5.0	50

MELBREAK GENEVA (*dam*) is full sister to **Melbreak Fairylight** sold Red Ladies Carlisle Dec 2011 9000gns. For more information visit the Herd Facebook page: Melbreak Limousin & Charolais.

Lot J & A Callion

150 MELBREAK NIGHTINGALE

Born 28/01/2017

CMS17-1615

UK 9636565/0161-5

Got by AI

Embryo Calf

Sire *TRUEMAN JAGGER SLN14-6436

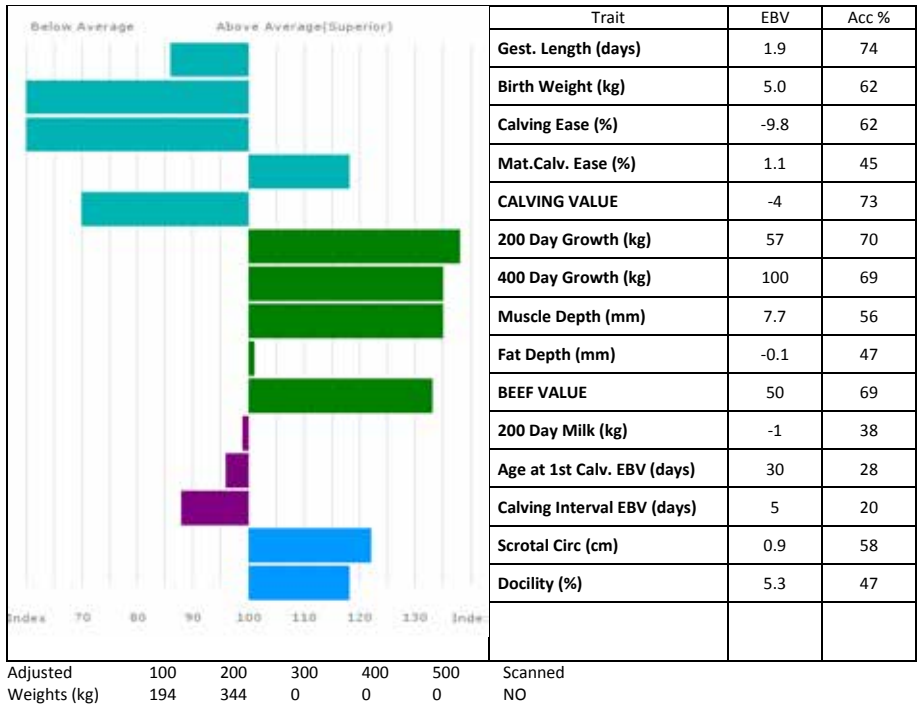
gs. AMPERTAINE GIGOLO MGD11-051

gd. TRUEMAN GRAZIA SLN11-006

Dam MELBREAK HIGHLIGHT CMS12-007

gs. COWIN BENBOYR JFL06-004

gd. MELBREAK FAIRYLIGHT CMS10002



MELBREAK FAIRYLIGHT (*gdam*) sold Red Ladies Carlisle Dec 2011 for 9000gns. For more information visit the Herd Facebook page: Melbreak Limousin & Charolais.

Lot J & A Callion

151 MELBREAK NIGHTOWL

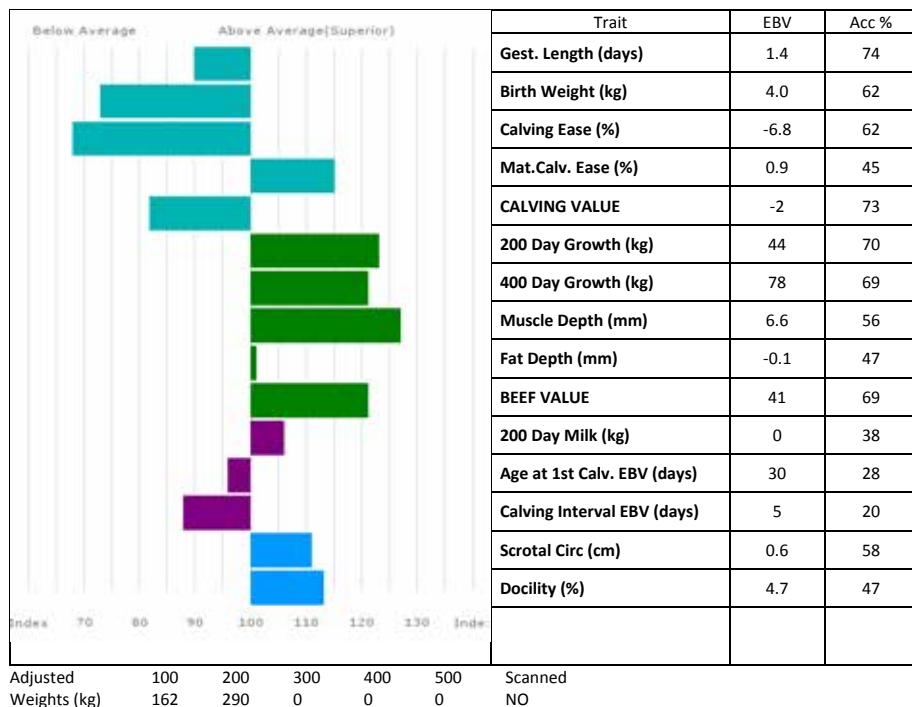
Born 27/01/2017

CMS17-1593

UK 9636565/0159-3

Got by AI

Embryo Calf

Sire *TRUEMAN JAGGER SLN14-6436**gs. AMPERTAINÉ GIGOLO MGD11-051****gd. TRUEMAN GRAZIA SLN11-006****Dam MELBREAK HIGHLIGHT CMS12-007****gs. COWIN BENBOYR JFL06-004****gd. MELBREAK FAIRYLIGHT CMS10-002**

MELBREAK FAIRYLIGHT (*gdam*) sold Red Ladies Carlisle Dec 2011 for 9000gns. For more information visit the Herd Facebook page: Melbreak Limousin & Charolais.

Lot J & A Callion

152 MELBREAK NIGHTSHADE

Born 01/02/2017

CMS17-1652

UK 9636565/0165-2

Got by AI

Embryo Calf

Sire *TRUEMAN JAGGER SLN14-6436

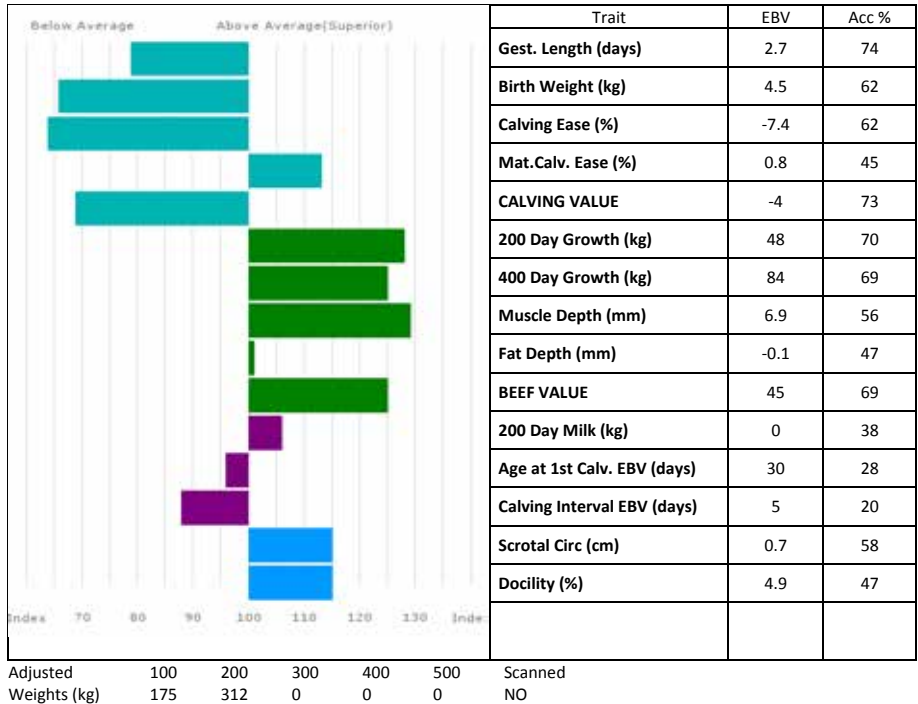
gs. AMPERTAINE GIGOLO MGD11-051

gd. TRUEMAN GRAZIA SLN11-006

Dam MELBREAK HIGHLIGHT CMS12-007

gs. COWIN BENBOYR JFL06-004

gd. MELBREAK FAIRYLIGHT CMS10-002



MELBREAK FAIRYLIGHT (*gdam*) sold Red Ladies Carlisle Dec 2011 for 9000gns. For more information visit the Herd Facebook page: Melbreak Limousin & Charolais.

Lot PJ Henshall

153 RINGWAY NANCY

Born 24/02/2017

Got by AI

HCY17-1308

Natural Calf

UK 581823/601308

Sire TATOUMH 12-03-071-996

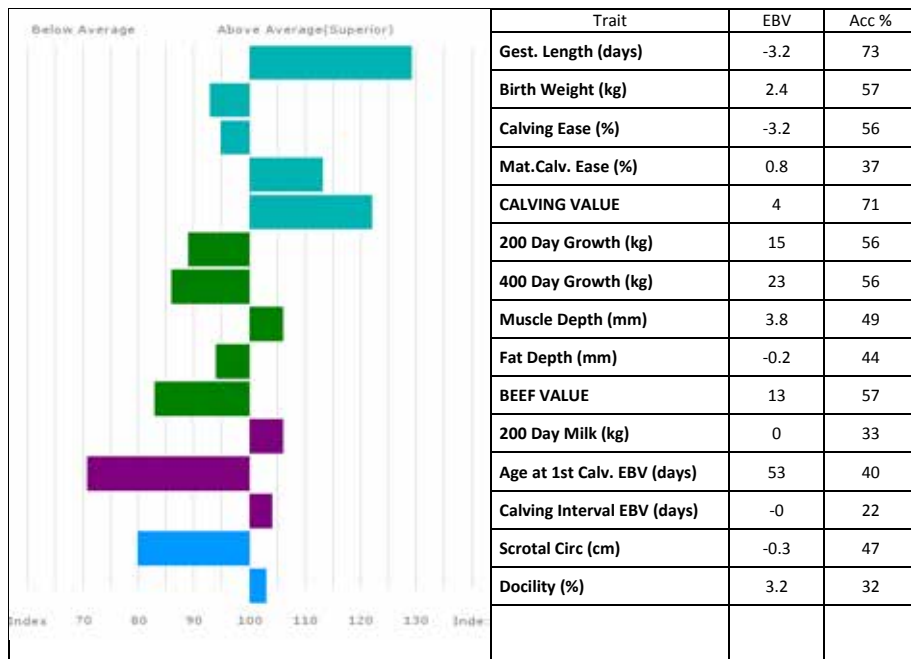
gs. MEYMAC 12-97-166-531

gd. LECTOURNE 12-95-163-180

Dam RINGWAY IMOGEN HCY13-1062

gs. SARKLEY VOLCANIC PBO04-027

gd. RINGWAY TASMIN HCY02-048



Adjusted 100 200 300 400 500 Scanned
Weights (kg) 154 268 0 0 0 NO

Lot PJ Henshall
154 RINGWAY NERYS
 Born 13/02/2017
 Natural Calf

HCY17-1307

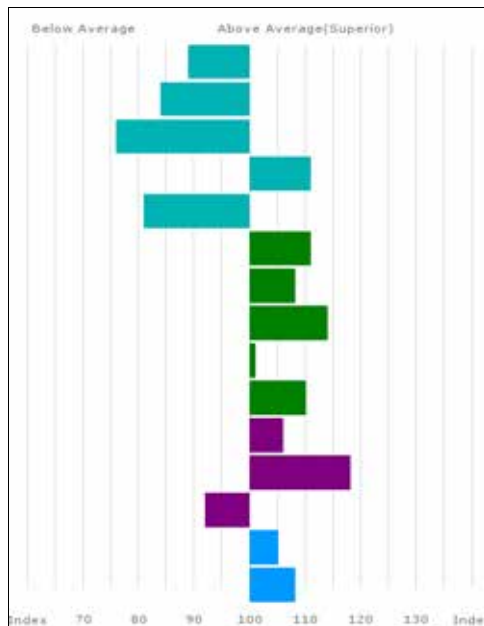
UK 581823/501307

Sire LOGANBURN JOCK HIX14-1160

gs. HUNTERSHALL GLADIATOR HRY11-028
 gd. LOGANBURN ANTIQUE HIX05-438

Dam RINGWAY HIGHLIGHT HCY12-1016

gs. BIAL 46-24-486-597
 gd. RINGWAY TREASURE HCY02-026



Trait	EBV	Acc %
Gest. Length (days)	1.5	71
Birth Weight (kg)	3.1	54
Calving Ease (%)	-5.8	54
Mat. Calv. Ease (%)	0.7	39
CALVING VALUE	-2	70
200 Day Growth (kg)	34	52
400 Day Growth (kg)	57	52
Muscle Depth (mm)	4.9	44
Fat Depth (mm)	-0.1	39
BEEF VALUE	33	53
200 Day Milk (kg)	0	31
Age at 1st Calv. EBV (days)	9	30
Calving Interval EBV (days)	4	18
Scrotal Circ (cm)	0.4	43
Docility (%)	3.9	35

Adjusted 100 200 300 400 500
 Weights (kg) 158 276 0 0 0

Scanned
 NO

Lot MJ Conway
155 CRAIGATOKE NAKEDLADY
 Born 15/02/2017
 Natural Calf

CDZ17-3484

UK 9650100/1348-4

Sire CRAIGATOKE JAMIESON CDZ14-2747

gs. AMPERTAINE ELGIN MGD09-039
 gd. CRAIGATOKE GIGGLE CDZ11-008

Dam CRAIGATOKE IRISHMIST CDZ13-2456

gs. SABLIER 36-15-082-249
 gd. CRAIGATOKE FIZZ CDZ10-013

Lot MJ Conway

156 CRAIGATOKE NETTLE

Born 14/06/2017

CDZ17-3554

UK 9650100/1355-4

Got by AI

Natural Calf

Sire CRAIGATOKE JACK CDZ14-2622**gs.** SABLIER 36-15-082-249**gd.** CRAIGATOKE ANT CDZ05-017**Dam CRAIGATOKE IGGYPOP CDZ13-001****gs.** PLUMTREE DEUS COE08-003**gd.** CRAIGATOKE FAY CDZ10-005

Lot MJ Conway

157 CRAIGATOKE NICEYNICE

Born 03/03/2017

CDZ17-3495

UK 9650100/1349-5

Got by AI

Natural Calf

Sire CRAIGATOKE JACK CDZ14-2622**gs.** SABLIER 36-15-082-249**gd.** CRAIGATOKE ANT CDZ05-017**Dam CRAIGATOKE ISLANDGIRL CDZ13-2353****gs.** SWARLAND EDDIE SOH09-010**gd.** CRAIGATOKE VALIREA CDZ04-018

Lot S Bowe
158 WIGGONBY NANCY
 Born 25/04/2017
 Natural Calf

BAX17-1040

UK 100541/501040

Sire *DRUMMIN EAGLE IE131206390801

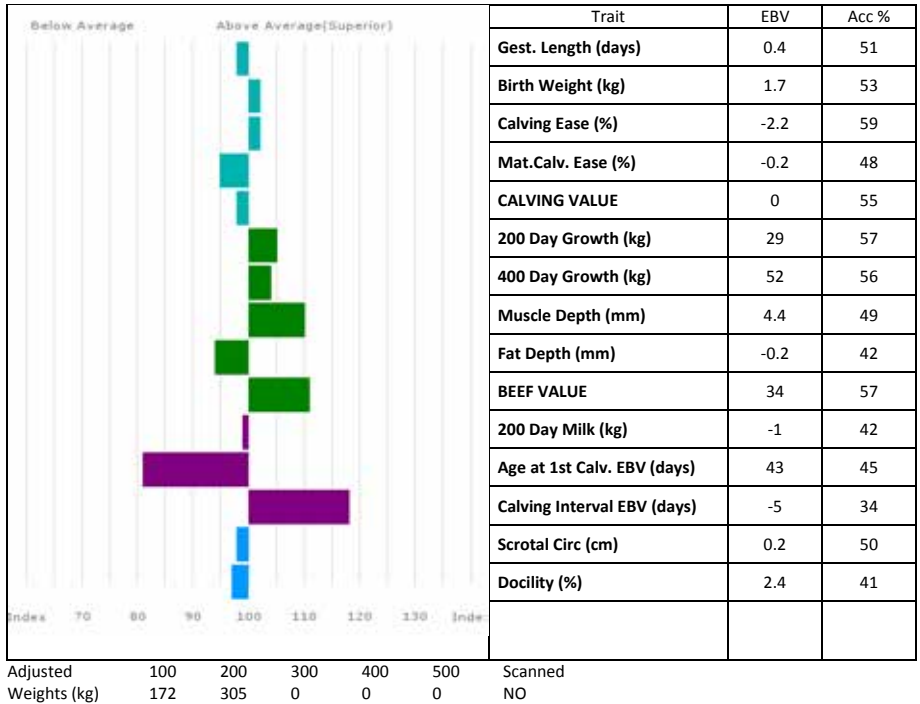
gs. SYMPA 48-01-006-969

gd. DRUMMIN CLIONA IE131206310579

Dam WIGGONBY DOLLY BAX08-180

gs. OBJAT 19-30-299-413

gd. SARKLEY TILLIE PBO02-193



WIGGONBY NANCY is a calf with great shape. **Wiggonby Dolly** (*dam*) is a daughter of the great **Objat**.

Lot S Bowe
159 WIGGONBY NAYDAY

Born 01/05/2017

BAX17-1045

UK 100541/301045

Natural Calf

Sire FREWSTOWN ITALIAN FBH13-390

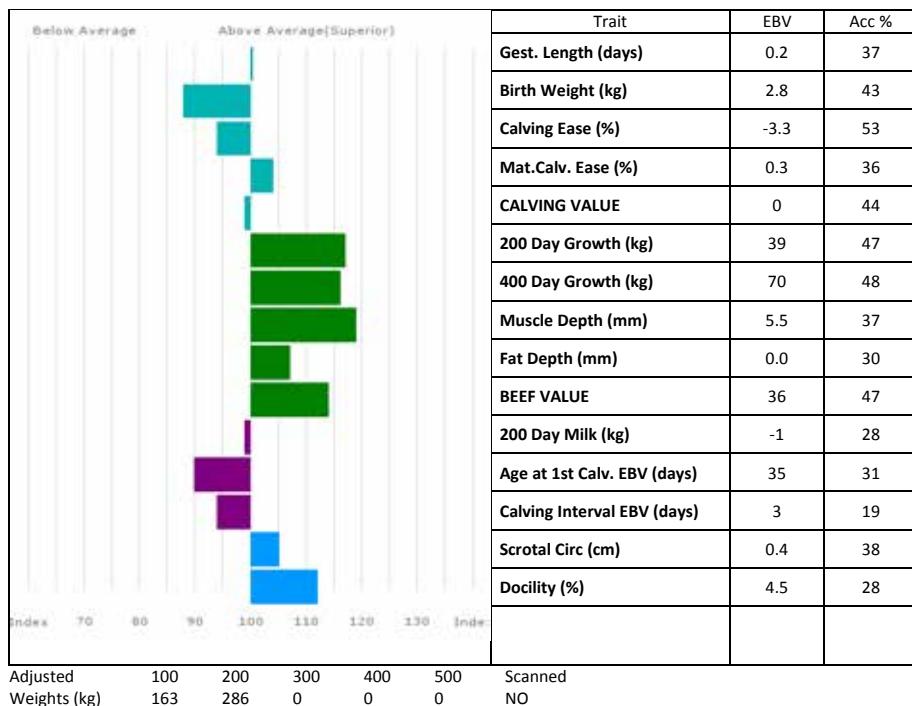
gs. CARMORN CANTONA MCN07-040

gd. FREWSTOWN CNINETEEN FBH07-203

Dam WIGGONBY JETTA BAX14-0873

gs. GLANGWDEN BIGBOY JBW06-618

gd. WIGGONBY GRETA BAX11-250



WIGGONBY NAYDAY is a heifers calf with great shape; from a combination of **Frewstown Italian** on a **Glangwden Big-Boy** daughter, which is working well.

Lot S Bowe
160 WIGGONBY NAYLA
 Born 20/04/2017
 Natural Calf

BAX17-1039

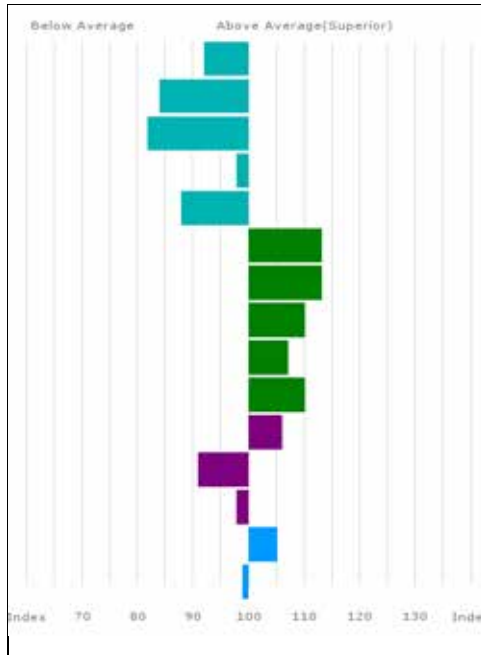
UK 100541/401039

Sire **FREWSTOWN ITALIAN FBH13-390**

gs. CARMORN CANTONA MCN07-040
 gd. FREWSTOWN CNINETEEN FBH07-203

Dam **WIGGONBY LAYLA BAX15-0902**

gs. DRUMMIN EAGLE IE131206390801
 gd. WIGGONBY HAYLEY BAX12263



Adjusted 100 200 300 400 500 Scanned
 Weights (kg) 175 308 0 0 0 NO

WIGGONBY NAYLA is the first heifer to be offered for sale from **Frewstown Italian**, Male Champion Cumberland Show at 10 months old, and the first calf from a **Drummin Eagle** daughter to be sold. A son of **Drummin Eagle** was sold to Spain Carlisle Oct 2017.

Lot S Bowe
161 WIGGONBY NELLY
 Born 10/04/2017
 Natural Calf

BAX17-1033

UK 100541/501033

Sire *DRUMMIN EAGLE IE131206390801

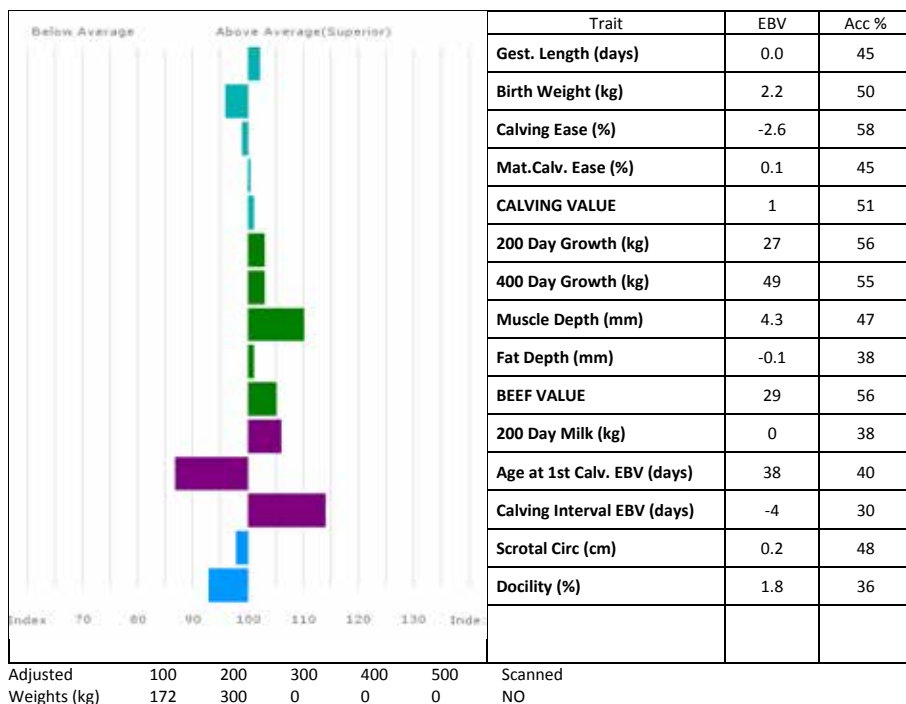
gs. SYMPA 48-01-006-969

gd. DRUMMIN CLIONA IE131206310579

Dam WIGGONBY HONOR BAX12-270

gs. SARKLEY CHIVALROUS PBO07103

gd. SARKLEY TILLIE PBO02-193



A large number of females have been retained in the herd from the dams breeding family and breeding goes back to the great **Rake Terence**.

Lot S Bowe
162 WIGGONBY NIGHTLIGHT

Born 14/04/2017
 Natural Calf

BAX17-1034

UK 100541/601034

Sire *DRUMMIN EAGLE IE131206390801

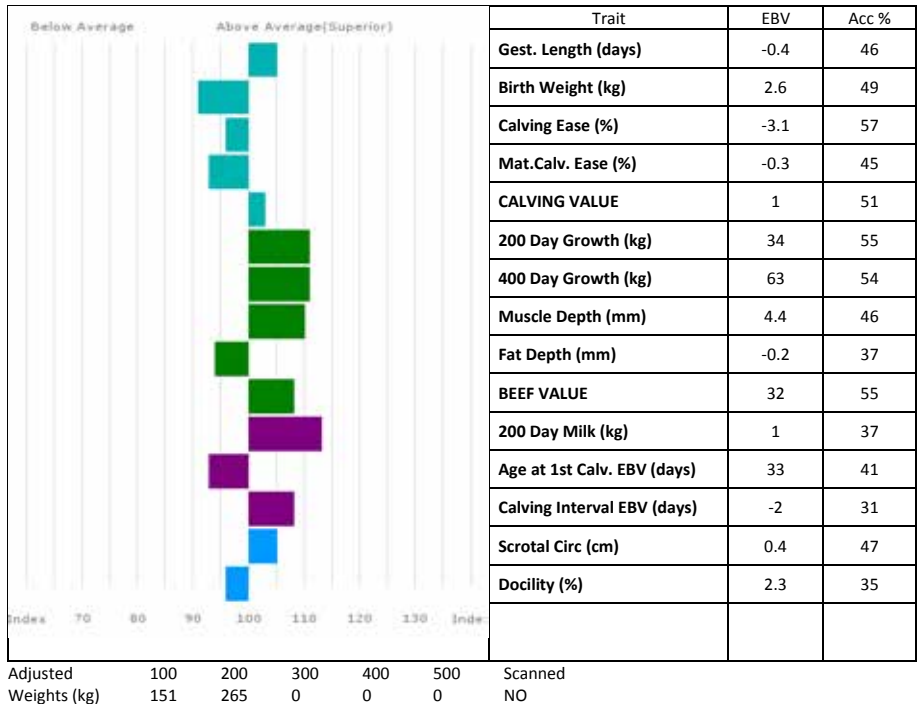
gs. SYMPA 48-01-006-969

gd. DRUMMIN CLIONA IE131206310579

Dam WIGGONBY FRANCES BAX10-221

gs. SARKLEY CHIVALROUS PBO07-103

gd. WIGGONBY BUNTY BAX06-144



WIGGONBY FRANCES (*dam*) is a long and stylish cow who has been a consistent breeder.

Lot	ES & E Norman		
163	NORMAN NEPHRITE		
	Born 22/01/2017	NBB17-1368	UK 101316/101368
	Got by AI	Natural Calf	

Sire	*LODGE HAMLET CBM12-346	gs.	SAPHIR 36-15-082-247
		gd.	LODGE VIOLET CBM04-114
Dam	NORMAN JADE NBB14-1127	gs.	CLARAGH FRANCO RJT10-013
		gd.	NORMAN GRAPE NBB11-005

Lot	ES & E Norman		
164	NORMAN NICE		
	Born 14/03/2017	NBB17-1385	UK 101316/401385
	Natural Calf		

Sire	NORMAN LARGO NBB15-1151	gs.	PLUMTREE FANTASTIC CQE10-023
		gd.	NORMAN BETRYS NBB06-019
Dam	NORMAN ICELOLLY NBB13-1038	gs.	CLARAGH FRANCO RJT10-013
		gd.	STACEY RUTH WEW00-012

Lot	ES & E Norman		
165	NORMAN NUDGE		
	Born 21/01/2017	NBB17-1367	UK 101316/701367
	Got by AI	Natural Calf	

Sire	*LODGE HAMLET CBM12-346	gs.	SAPHIR 36-15-082-247
		gd.	LODGE VIOLET CBM04-114
Dam	NORMAN JAM NBB14-1142	gs.	CLARAGH FRANCO RJT10-013
		gd.	NORMAN GERTRUDE NBB11-047

Lot Bruce T Goldie

166 GOLDIES BLACK NADIA

Born 21/01/2017

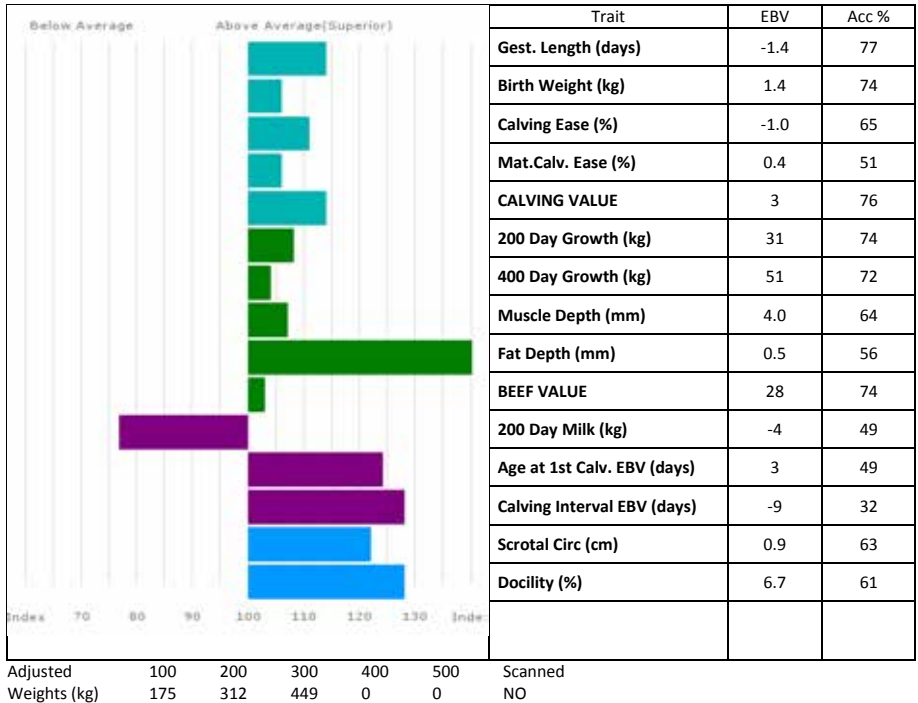
GS17-1707

UK 581575/501707

Grade: 90% LIMOUSIN, Black Genetics, Black Coat

Got by AI

Embryo Calf

Sire *EDWARDS. SIRLOIN NPM-1712386**gs. FIRST CHOICE NPM-1314029****gd. DOLLAR ANTE NPF-902974****Dam GOLDIES TORONTO GS02-478****gs. POLLED BLACK POWDER NPM-620693****gd. SLVL DUTCHESS OLIVIA 243D NPF-1163213**

GOLDIES BLACK NADIA is full sister to **Goldies Globetrotter 8000gns**. **Goldies Toronto (dam)** also bred **Goldies Denver 12,000gns**. **Nadia** is homozygous black and homozygous polled.

Lot G & P Long

167 MILLBROW NAOMI

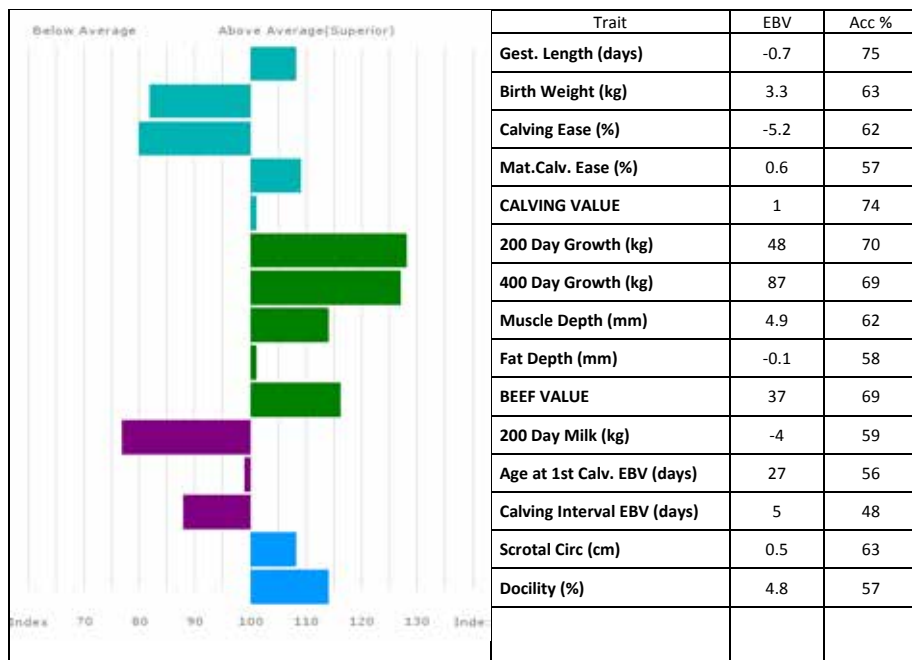
Born 31/01/2017

LBH17-0173

UK 102958/200173

Got by AI

Embryo Calf

Sire *WILODGE VANTASTIC WEY04-037**gs. WILODGE TONKA WEY02-002****gd. RAVENELLE 23-51-224-583****Dam MILLBROW FAITH LBH10-014****gs. SYMPA 48-01-006-969****gd. MILLBROW MAGIC LBH96002**

Adjusted 100 200 300 400 500 Scanned
Weights (kg) 204 368 0 0 0 NO

Lot SD Illingworth

168 GLENROCK NORTHERNSTAR

Born 12/03/2017

IE17-1287

UK 581793/301287

Got by AI

Embryo Calf

Sire *HALTCLIFFE DOCTOR RP08-788

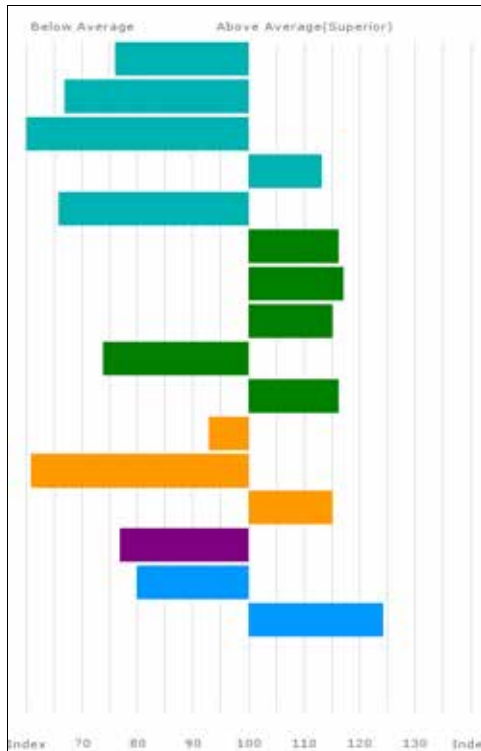
gs. ROSSIGNOL 36-15-030-976

gd. HALTCLIFFE USABELLE RP03-012

Dam GLENROCK FANTASTIC IE10-986

gs. HALTCLIFFE VERMOUNT RP04-042

gd. GLENROCK SPANGLE IE01-155



Adjusted Weights (kg) 100 200 300 400 500
 174 305 0 0 0

Scanned
 NO

This animal has been genotyped for Carcase and Maternal trait GEBVs

Lot GT & RJ Roberts
169 PONDPAK NAOMI

Born 02/03/2017

Got by AI

RHU17-1501

Natural Calf

UK 9041936/150-1

Sire *LODGE HAMLET CBM12-346

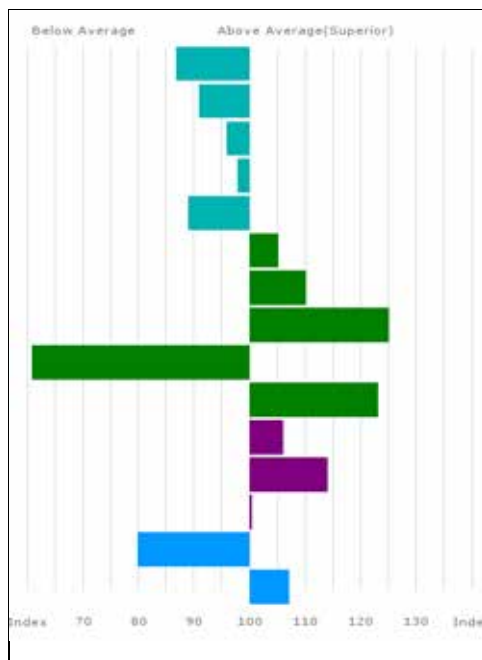
gs. SAPHIR 36-15-082-247

gd. LODGE VIOLET CBM04-114

Dam MILLGATE JLO LFR14-5324

gs. CONDOR 19-33-099-583

gd. KILCURRY CAILIN IE251022720201



Trait	EBV	Acc %
Gest. Length (days)	1.8	62
Birth Weight (kg)	2.6	59
Calving Ease (%)	-3.0	58
Mat. Calv. Ease (%)	0.0	51
CALVING VALUE	-1	62
200 Day Growth (kg)	29	58
400 Day Growth (kg)	60	58
Muscle Depth (mm)	6.4	55
Fat Depth (mm)	-0.7	54
BEEF VALUE	43	58
200 Day Milk (kg)	0	41
Age at 1st Calv. EBV (days)	13	36
Calving Interval EBV (days)	1	23
Scrotal Circ (cm)	-0.3	55
Docility (%)	3.8	50

Adjusted 100 200 300 400 500 Scanned
 Weights (kg) 155 282 0 0 0 NO

PONDPAK NAOMI was a very small calf at birth, weighing 31kgs and born unassisted; she is a heifers first calf. **Millgate Jlo (dam)** is full sister of the noted **Millgate Fame**. This is a rare opportunity to acquire these genetics, combining muscle and easy calving.

Lot Clive Knox
170 BEACHMOUNT NANCY

Born 02/02/2017

Got by AI

KCG17-2141

Natural Calf

UK 9472406/0214-1

Sire *ELITE FOREVER BRILL IE221062720723

gs. WILODGE VANTASTIC WEY04-037

gd. ARDLEA COILLTE IE221064550682

Dam NEBO HELEN TFQ12-004

gs. IONESCO 36-93-000-206

gd. BRENMICK DANDG JAW08-004

BEACHMOUNT NANCY is a long clean heifer with plenty of width.

Lot D & L Graham

171 BURNBANK NATALIE

Born 14/03/2017

GHK17-1331

UK 542796/501331

Got by AI

Natural Calf

Sire DINMORE JONESY DIR14-0900

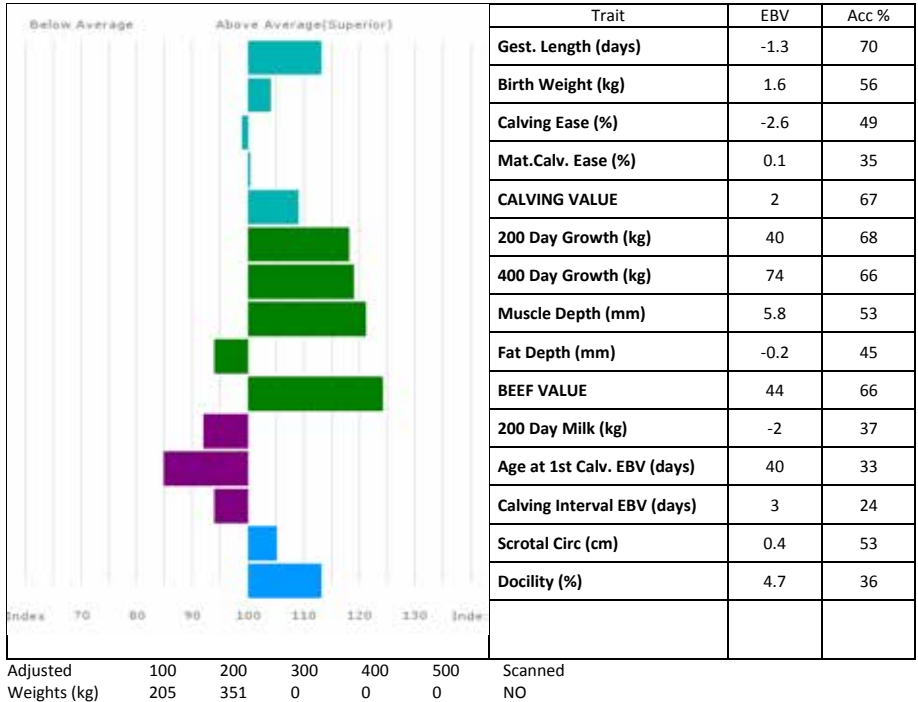
gs. REQUIN 36-15-031-134

gd. DINMORE ELLE DIR09-006

Dam BURNBANK INSPIRE GHK13-042

gs. BURNBANK FRANK GHK10-004

gd. BURNBANK CRYSTAL GHK07-029



BURNBANK INSPIRE (*dam*) is out of **Burnbank Crystal**, dam of 9000gns **Burnbank Maggiemay** sold Red Ladies Carlisle Dec 2016.

Lot D & L Graham

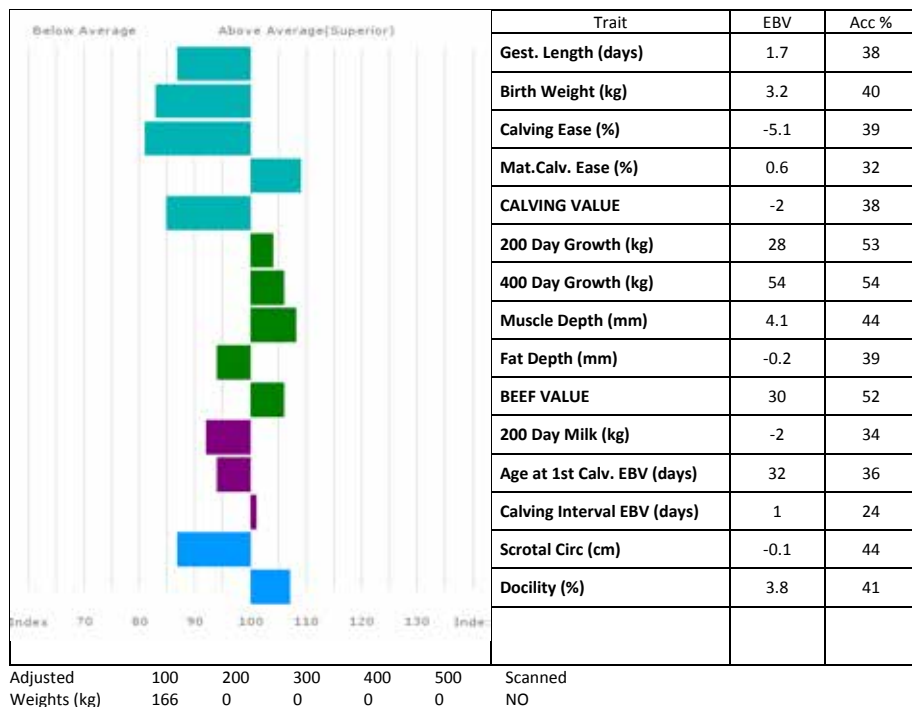
172 BURNBANK NEVE

Born 11/06/2017

GHK17-1351

UK 542796/401351

Natural Calf

Sire MARAISCOTE LETISSIER NAJ15-2066**gs. GOLDIES COMET GS07-954****gd. MARAISCOTE BETTY NAJ06-004****Dam BURNBANK JEN GHK14-1172****gs. ANGE 87-03-805-873****gd. BURNBANK GINESIA GHK11-060**

BURNBANK NEVE is the first calf to be offered for sale by **Maraiscote Letissier**. **Neve** is a heifers calf showing great shape.

.Lot D & L Graham

173 BURNBANK NUTMEG

Born 18/03/2017

Got by AI

GHK17-1336

UK 542796/301336

Natural Calf

Sire *LODGE HAMLET CBM12-346

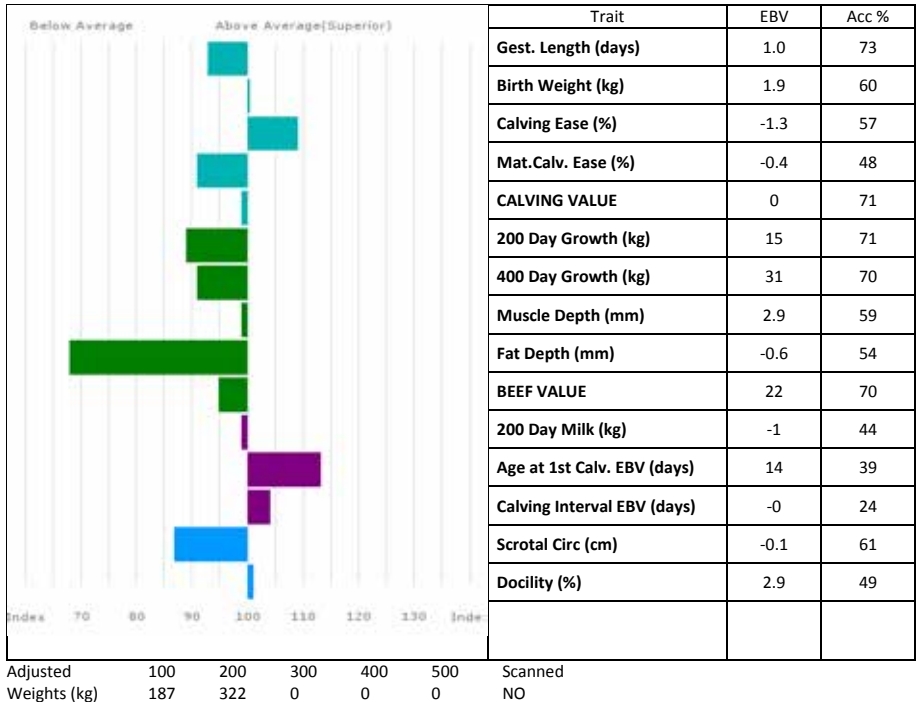
gs. SAPHIR 36-15-082-247

gd. LODGE VIOLET CBM04-114

Dam BURNBANK INGOT GHK13-034

gs. BURNBANK FRANK GHK10-004

gd. BURNBANK CHIC GHK07-025



BURNBANK INGOT (*dam*) is a very breedy cow who is consistently breeding well within the herd.

Lot 174	Victor Keys ASHVIEW NANCY Born 25/01/2017 Got by AI	KEK17-9902 Embryo Calf	UK 9631492/0990-2
Sire	CHAUMEIL 19-32-967-173	gs. OBJAT 19-30-299-413 gd. UTILE 19-31-849-766	
Dam	ASHMARA CLASSYGIRL MGP07-015	gs. ROCKY 36-15-030-964 gd. CRACROP ULTIMATEGIRL SMR03-096	

ASHMARA CLASSYGIRL (*dam*) is a great cow who has bred bulls to £8,000, £6000 and 6000gns.

Lot 175	Victor Keys ASHVIEW NOELLE Born 07/04/2017 Got by AI	KEK17-9961 Natural Calf	UK 9631492/0996-1
Sire	*LODGE HAMLET CBM12-346	gs. SAPHIR 36-15-082-247 gd. LODGE VIOLET CBM04-114	
Dam	TOGHERDOO IBELL KYC13-008	gs. SWARLAND EDDIE SOH09-010 gd. CARMORN UBELL MCN03-026	
Lot 176	Victor Keys ASHVIEW NOREEN Born 11/04/2017 Got by AI	KEK17-0016 Natural Calf	UK 9631492/1001-6
Sire	*LODGE HAMLET CBM12-346	gs. SAPHIR 36-15-082-247 gd. LODGE VIOLET CBM04-114	
Dam	TOGHERDOO ELEEN KYC09-009	gs. WILODGE VANTASTIC WEY04-037 gd. RONICK OPTIMA DY98-430	

ASHVIEW NOREEN has **Broadmeadows Cannon** on both sides of her pedigree. **Togherdoo Eleen's** (*dam*) full brother sold for 12,000gns.

Lot W Barron
177 BARRONS NANCY
 Born 15/01/2017
 Got by AI

BNI17-0379

UK 105586/600379

Natural Calf

Sire *LODGE HAMLET CBM12-346

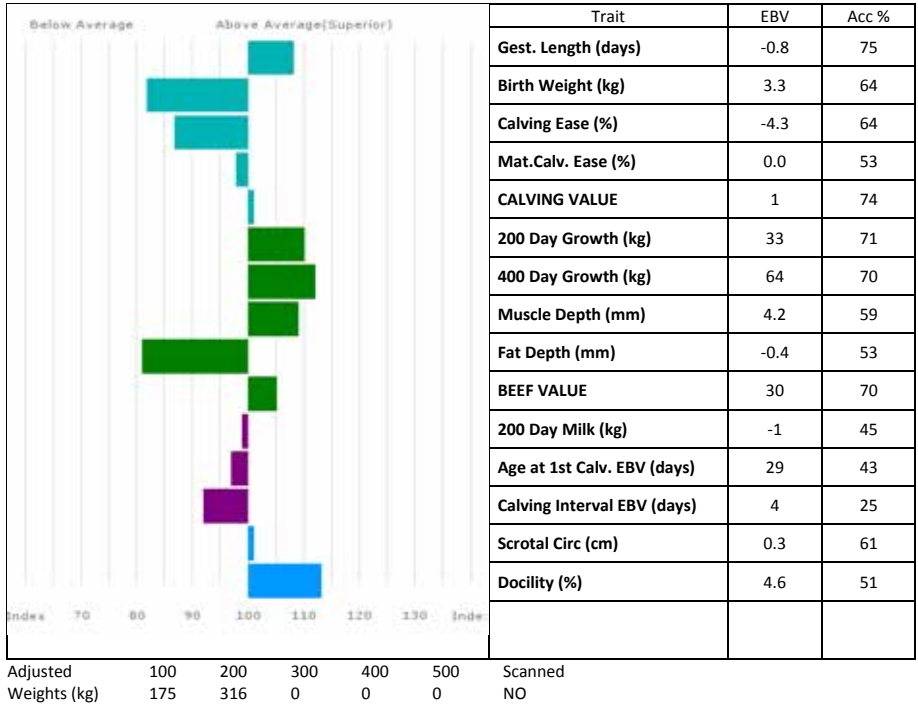
gs. SAPHIR 36-15-082-247

gd. LODGE VIOLET CBM04-114

Dam BARRONS HANSY BNI12-257

gs. IRONSTONE COLONEL SDS07-069

gd. BARRONS TANSY BNI02-063



BARRONS HANSY (*dam*) also bred **Barrons Maisey** 5800gns, top price heifer Carlisle Feb 2017.

Lot Kedzlie Farms Ltd

178 SWALESMOOR NESSA

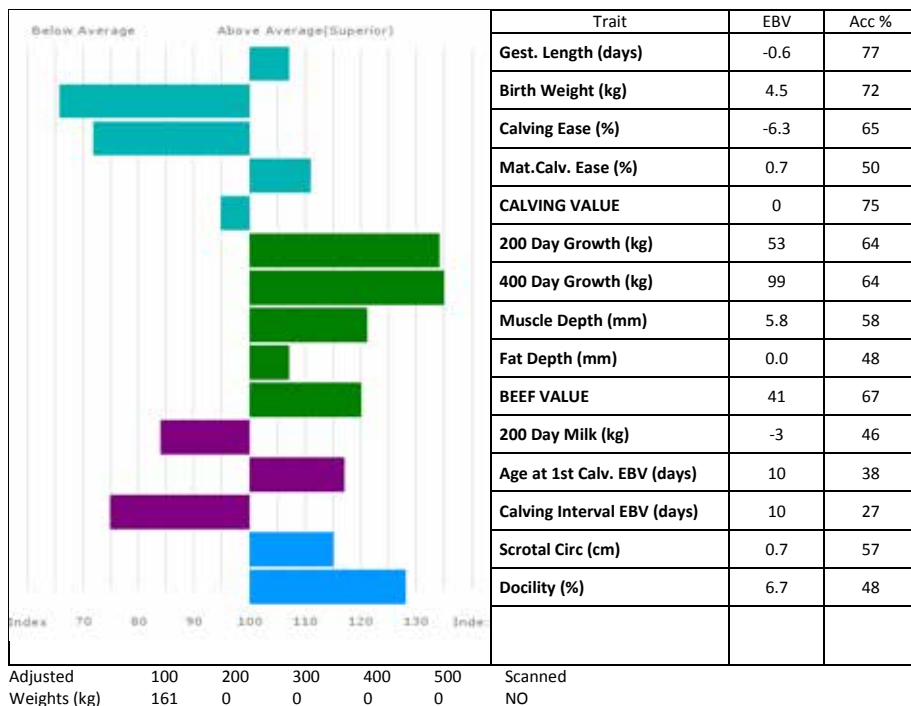
Born 18/05/2017

Got by AI

STW17-5307

UK 562070/605307

Embryo Calf

Sire FOXHILLFARM JASPER AGX14-034**gs. LOOSEBEARE FANTASTIC QA10-074****gd. BANKDALE ALICE WLJ05-091****Dam GLENROCK ILLUSION IE13-112****gs. GOLDIES COMET GS07-954****gd. GLENROCK SPANGLE IE01-155****GLENROCK ILLUSION (dam)** needs no introduction; an exciting breeding line.

Lot GJ Lee & CM Lloyd

179 CALOGALE NIGHTINGALE

Born 01/01/2017

LIC17-0060

UK 752063/400060

Got by AI

Embryo Calf

Sire *TRUEMAN JAGGER SLN14-6436

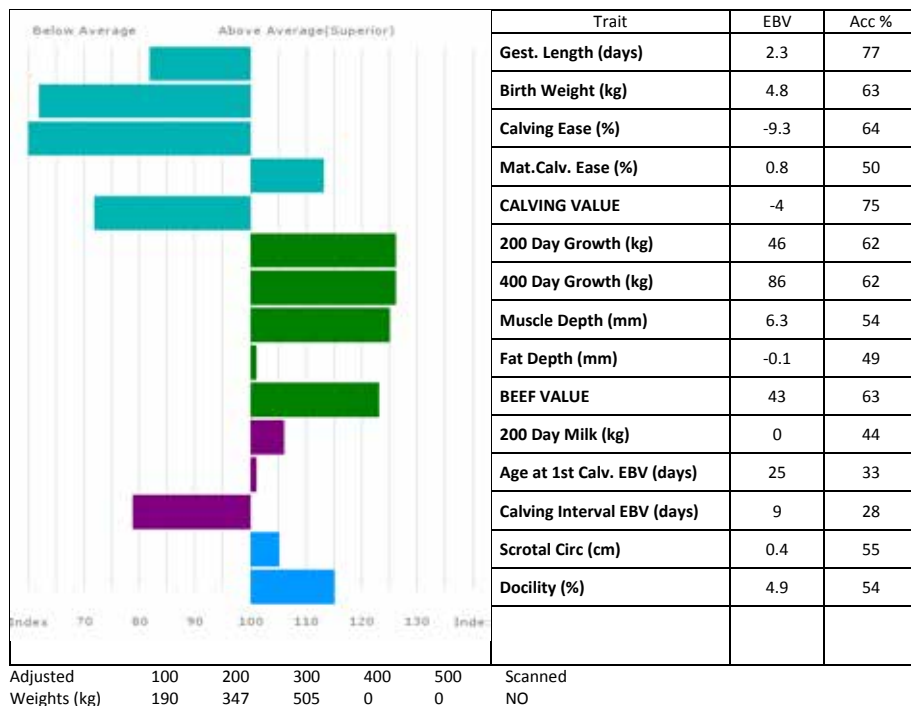
gs. AMPERTAINE GIGOLO MGD11-051

gd. TRUEMAN GRAZIA SLN11-006

Dam TRUEMAN FLORENCE SLN10-006

gs. WILODGE VANTASTIC WEY04-037

gd. TRUEMAN SONG SLN01-002



CALOGALE NIGHTINGALE is an exceptional young heifer and is one of the first to be sired by the world record breaking **Trueman Jagger**. **Nightingale** and her two full brothers are three of the best calves ever bred at Calogale and have been much admired by numerous visitors to the farm. She oozes class, combining natural muscle with length, width and femininity. Her dam is the outstanding **Trueman Florence** who has consistently bred tremendously well for the herd. This is a unique opportunity to purchase some of the finest genetics right from the heart of the Calogale herd. Her full brother, **Calogale Napoleon** is another superb calf and is lot 101 in the bull section of this sale.

Visit website: www.calogale.co.uk

Lot J & S Allen

180 DERG NANCY

Born 18/05/2017

Got by AI

DER17-5446

Natural Calf

UK 9652349/0544-6

Sire *LODGE HAMLET CBM12-346

gs. SAPHIR 36-15-082-247

gd. LODGE VIOLET CBM04-114

Dam ROUNDHILL INORA IE241280241441

gs. ELITE FOREVER BRILL IE221062720723

gd. ROUNDHILL ENORA IE241280211182

DERG NANCY carries a single copy of Q204X and a single copy of F49L genes.

Lot Mr & Mrs M Alford

181 FOXHILLFARM NATASHA

Born 15/01/2017

Got by AI

AGX17-166

Embryo Calf

UK 374401/700116

Sire *TRUEMAN JAGGER SLN14-6436

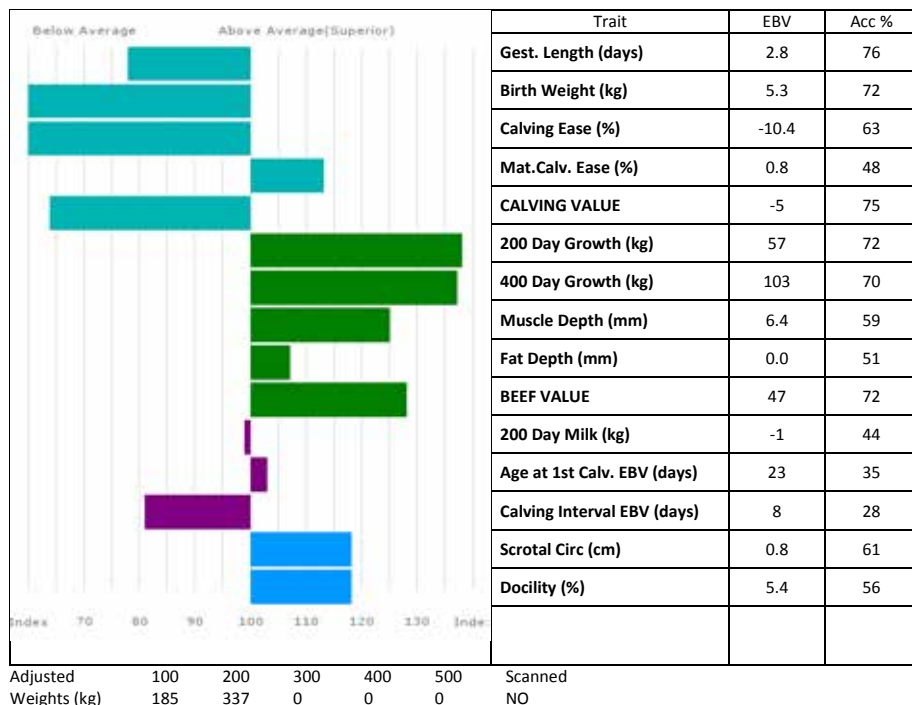
gs. AMPERTAINE GIGOLO MGD11-051

gd. TRUEMAN GRAZIA SLN11-006

Dam FOXHILLFARM IOLA AGX13-024

gs. WILODGE VANTASTIC WEY04-037

gd. BANKDALE ALICE WLJ05-091



FOXHILLFARM IOLA (*dam*) is full sister to the multi prize winning **Foxhillfarm Gracie**, who was Breed Champion RHS and RWS and Breed and Interbreed Champion GYS. **Foxhillfarm Natasha** is a granddaughter of the prolific cow **Bankdale Alice** who has produced over half a million pounds worth of progeny; she carries one copy of the F94L gene and one copy of the Q204X gene.

Lot Mr & Mrs M Alford

182 FOXHILLFARM NAUGHTYBUTNICE

Born 11/01/2017

AGX17-159

UK 374401/100110

Got by AI

Embryo Calf

Sire *NEUF 22-97-004-114

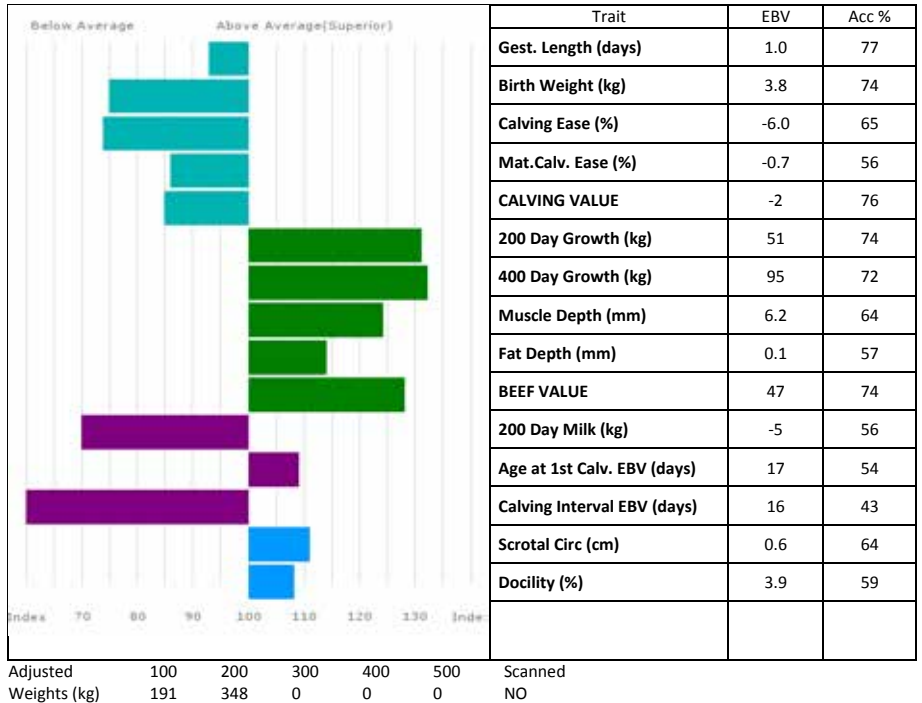
gs. CASSIS 40-88-028-055

gd. JUNGLE 22-94-004-270

Dam FOXHILLFARM IZZY AGX13-014

gs. WILODGE VANTASTIC WEY04-037

gd. BANKDALE ALICE WLJ05-091



FOXHILLFARM IZZY (*dam*) won Champion at many calf shows at 10 months old. **Foxhillfarm Naughtybutnice** is sired by the great French bull **Neuf** who is renowned for breeding good females. A granddaughter of the prolific cow **Bankdale Alice** who has produced over half a million pounds worth of progeny; she carries one copy of the F94L gene and one copy of the Q204X gene.

Lot Mr & Mrs M Alford

183 FOXHILLFARM NICHOLE

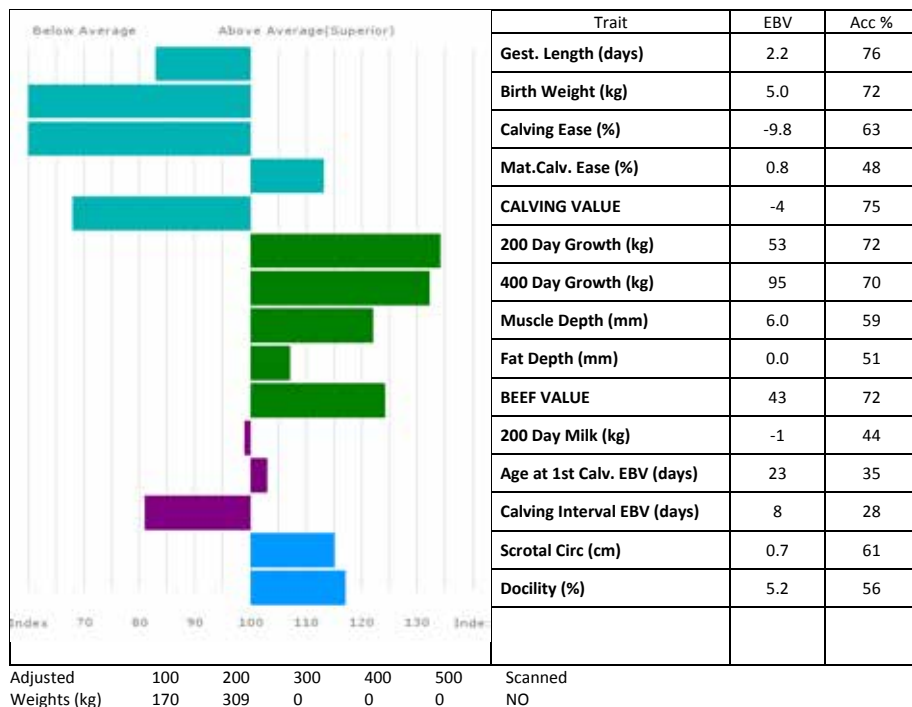
Born 13/01/2017

AGX17-164

UK 374401/500114

Got by AI

Embryo Calf

Sire *TRUEMAN JAGGER SLN14-6436**gs. AMPERTAINÉ GIGOLO MGD11-051****gd. TRUEMAN GRAZIA SLN11-006****Dam FOXHILLFARM IOLA AGX13-024****gs. WILODGE VANTASTIC WEY04-037****gd. BANKDALE ALICE WLJ05-091**

FOXHILLFARM IOLA (*dam*) is full sister to the multi prize winning **Foxhillfarm Gracie**, who was Breed Champion RHS and RWS and Breed and Interbreed Champion GYS. **Foxhillfarm Natasha** is a granddaughter of the prolific cow **Bankdale Alice** who has produced over half a million pounds worth of progeny; she carries one copy of the F94L gene and one copy of the Q204X gene.

Lot Mr & Mrs M Alford

184 FOXHILLFARM NORMA

Born 19/01/2017

AGX17-170

UK 374401/400120

Got by AI

Embryo Calf

Sire *TRUEMAN JAGGER SLN14-6436

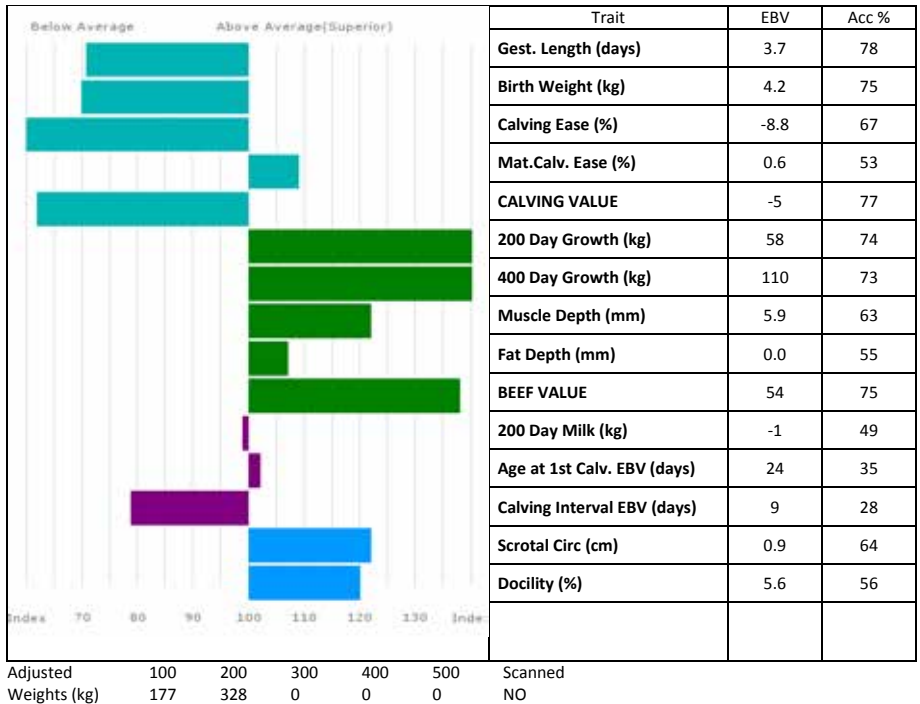
gs. AMPERTAINE GIGOLO MGD11-051

gd. TRUEMAN GRAZIA SLN11-006

Dam BANKDALE ELIZABETH WLJ09-295

gs. WILODGE VANTASTIC WEY04-037

gd. BANKDALE ALICE WLJ05-091



BANKDALE ELIZABETH (*dam*) has produced over 200,000gns worth of progeny including **Foxhillfarm Irishlad** 38,000gns sold to Bruce Goldie and Jonathan Watson. **Foxhillfarm Norma** is full sister to **Foxhillfarm Madonna** Senior Female Champion Stars of the Future Calf Show Oct 2017. A granddaughter of the prolific cow **Bankdale Alice** who has produced over half a million pounds worth of progeny; she carries one copy of the F94L gene and one copy of the Q204X gene.

Lot TW Hutchinson
185 KINGSCHAUGH NORA
Born 07/05/2017 HOL17-0308 UK 104638/400308
Natural Calf

Sire WILODGE INCHBYINCH WEY13-1204 **gs.** LOOSEBEARE DIEGO QA08-045
gd. VANILLE 19-31-949-423

Dam KINGSCHAUGH GAIL HOL11-007 **gs.** ANANAS BEN 36-15-036-596
gd. ALDWYCK UFA BAM03-069

Lot Andrew Orr
186 LOMOND NEELA
Born 02/03/2017 ODG17-0025 UK 547305/600025
Got by AI Natural Calf

Sire *ELITE FOREVER BRILL IE221062720723 **gs.** WILODGE VANTASTIC WEY04-037
gd. ARDLEA COILLTE IE221064550682

Dam SPITTALTON HAPPYDAYS BKY12-043 **gs.** LODGE EQUAL CBM09-259
gd. SPITTALTON ANGELINE BKY05-022

Lot	Andrew Orr		
187	LOMOND NINA		
	Born 03/01/2017	ODG17-0020	UK 547305/100020
	Got by AI	Natural Calf	
Sire	*AMPERTAINÉ GIGOLO MGD11-051	gs.	AMPERTAINÉ COMMANDER MGD07-046
		gd.	AMPERTAINÉ CRYSTAL MGD07-016
Dam	SPITTALTON ILONA BKY13-0684	gs.	SPITTALTON DENZIL BKY08-034
		gd.	SPITTALTON BERTHA BKY06-006

Lot A & G Ogg

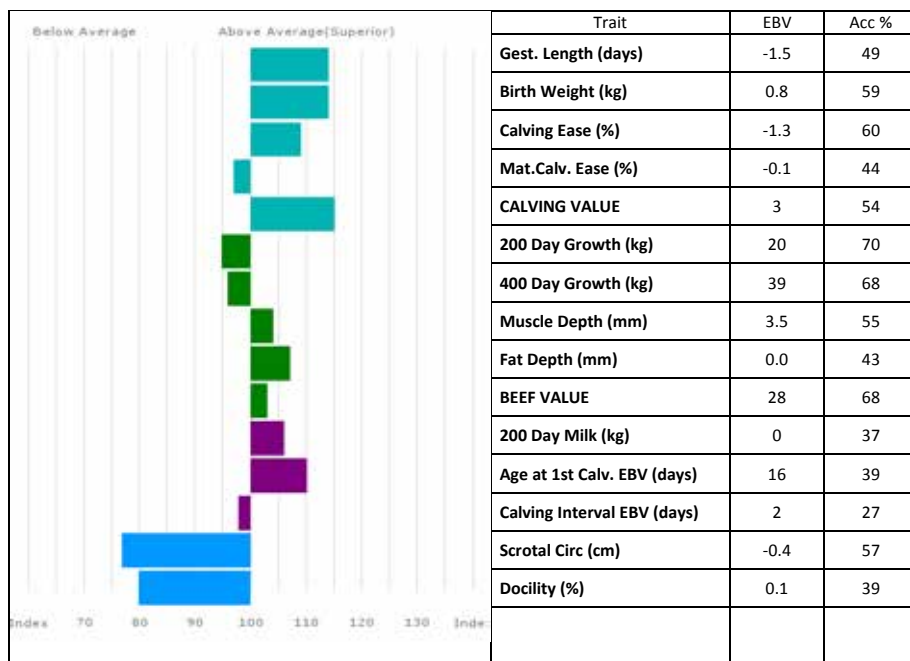
188 CONFLUENCE NATTIE

Born 11/01/2017

OBI17-0640

UK 143127/100640

Natural Calf

Sire *CORRIDAN HAKKA CDE12-1541**gs. WILODGE CERBERUS WEY07-010****gd. CORRIDAN VIOLA CDE04-656****Dam CONFLUENCE FLIC OBI10-174****gs. GREENWELL CHARTTOPPER NK07-036****gd. RACHELS ANGEL WT05-166**

Adjusted	100	200	300	400	500	Scanned
Weights (kg)	147	255	0	0	0	NO

Lot A & G Ogg
189 CONFLUENCE NELL
 Born 18/01/2017
 Natural Calf

OBI17-0642

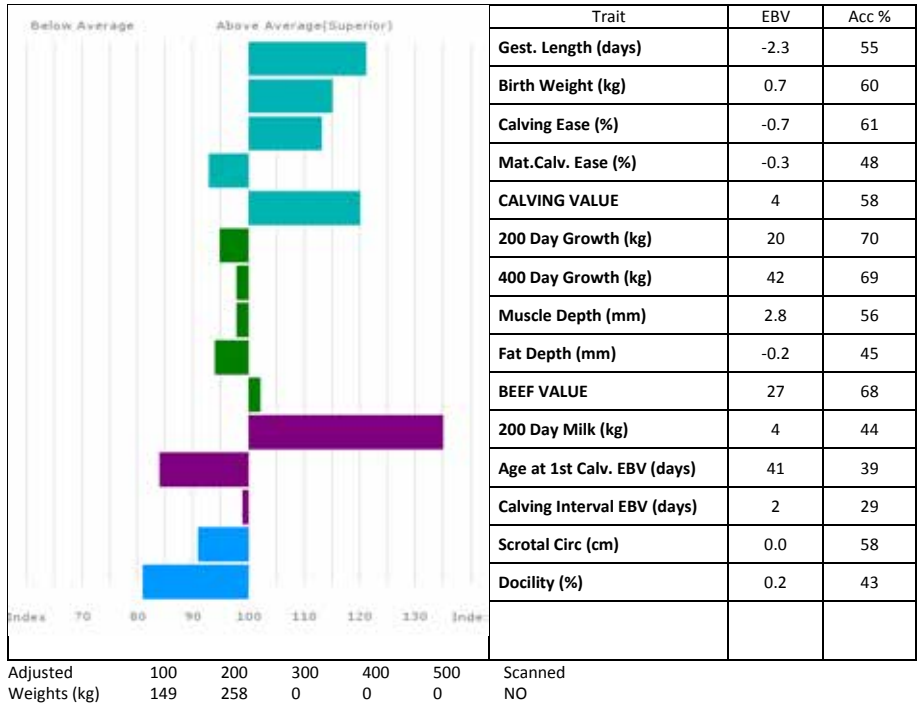
UK 143127/300642

Sire *CORRIDAN HAKKA CDE12-1541

gs. WILODGE CERBERUS WEY07-010
 gd. CORRIDAN VIOLA CDE04-656

Dam CONFLUENCE ULAY OBI03-020

gs. GREENWELL MANAGER NK96-012
 gd. CONFLUENCE SEVENUP OBI01-006



Lot A & G Ogg

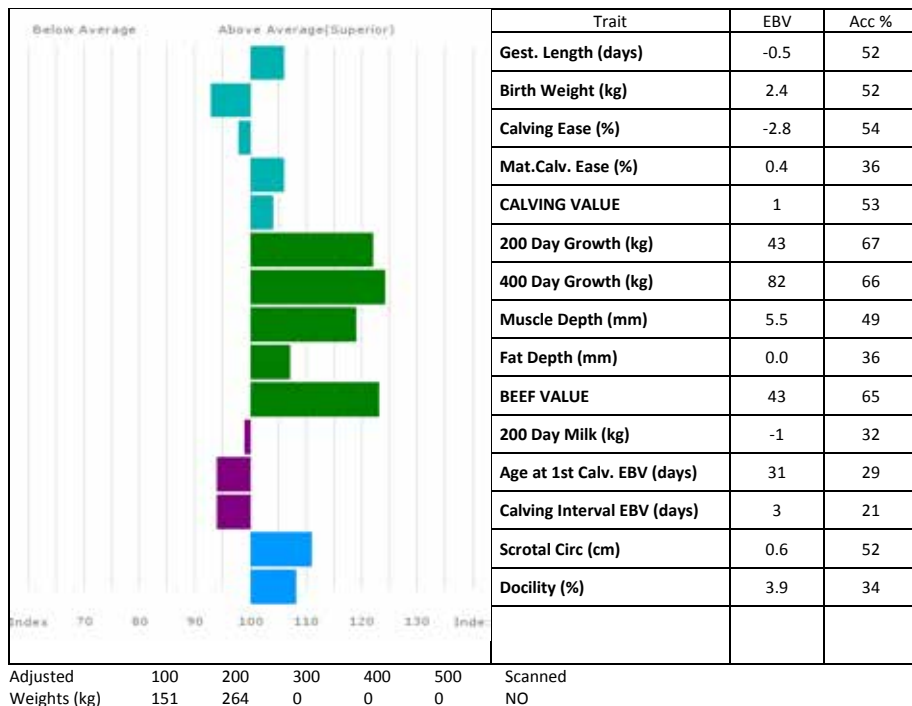
190 CONFLUENCE NICO

Born 08/01/2017

OBI17-0636

UK 143127/400636

Natural Calf

Sire BROADHEAD IRONMAN TJY13-1142**gs. GOLDIES FANDANGO GS10-1121****gd. TWEEDDALE ANITA WJQ05-013****Dam CONFLUENCE JADE OBI14-0454****gs. CORRIDAN HAKKA CDE12-1541****gd. CONFLUENCE GALENA OBI11-328**

Lot A & G Ogg
191 CONFLUENCE NIXIE
 Born 25/01/2017
 Natural Calf

OBI17-0648

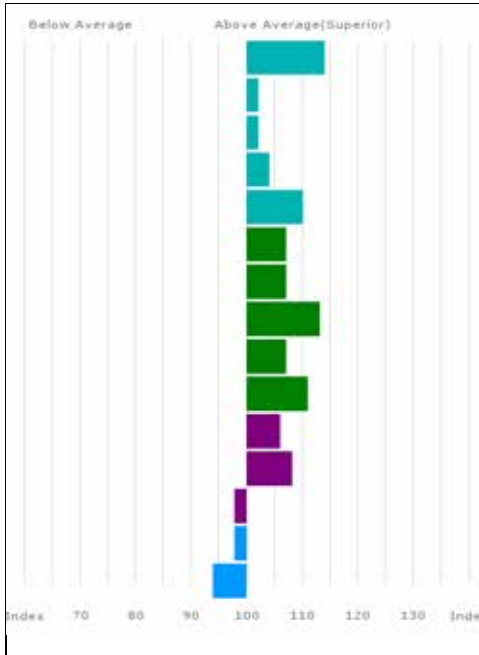
UK 143127/200648

Sire *CORRIDAN HAKKA CDE12-1541

gs. WILODGE CERBERUS WEY07-010
 gd. CORRIDAN VIOLA CDE04-656

Dam CONFLUENCE HERMIONE OBI12-378

gs. GREENWELL CHARTTOPPER NK07-036
 gd. CONFLUENCE BLY OBI06-057



Adjusted 100 200 300 400 500
 Weights (kg) 153 267 0 0 0

Scanned
 NO

Lot A & G Ogg

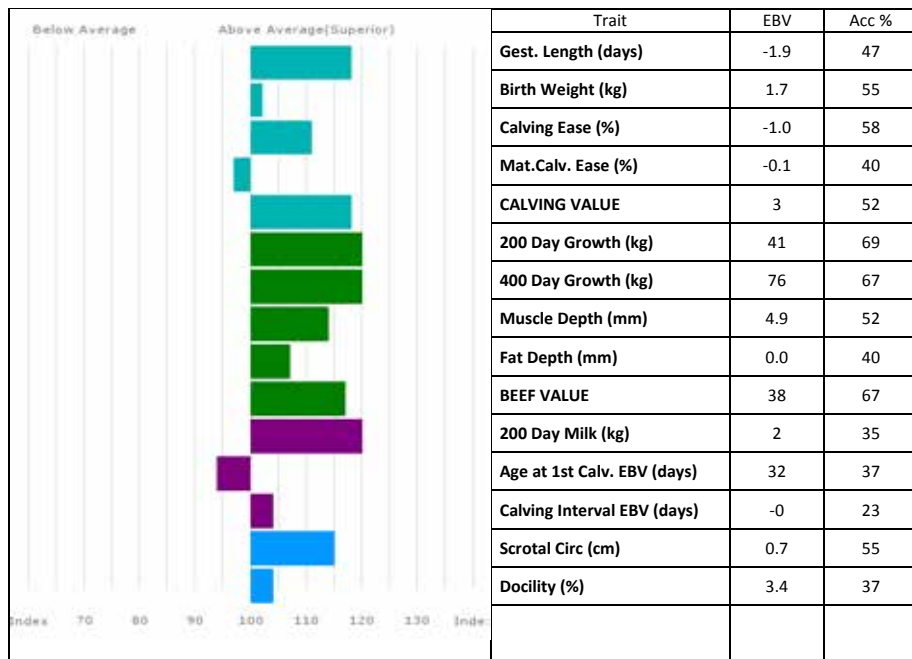
192 CONFLUENCE NOVA

Born 03/01/2017

OBI17-0630

UK 143127/500630

Natural Calf

Sire *CORRIDAN HAKKA CDE12-1541**gs. WILODGE CERBERUS WEY07-010****gd. CORRIDAN VIOLA CDE04-656****Dam CONFLUENCE JACQUI OBI14-0479****gs. WILODGE GIGABYTE WEY11-056****gd. MILLINGTON VERONICA MRJ04-640**

Adjusted 100 200 300 400 500
 Weights (kg) 172 304 0 0 0

Scanned
 NO



FORTHCOMING LIMOUSIN SALES 2018

(within Borderway Mart, Carlisle, unless otherwise stated)

Friday 26th January

Major Reduction of the HALTCLIFFE HERD on behalf of Haltcliffe,
Hesket-new-Market, Wigton, Cumbria

Friday 16th & Saturday 17th February

Annual February Show and Sale of Bulls and Sale of Females
(entries close Friday 5th January)

Friday 4th & Saturday 5th May

Annual May Show and Sale of Bulls and Females
(entries close Friday 16th March)

Thursday 17th May

North West Midlands & North Wales Cattle Breeders Club
Annual Spring Show & Sale of Bulls and Females
at Welshpool Livestock Market
(in conjunction with Welshpool Livestock Sales)

Friday 15th June

Annual Summer Sale of Bulls & Youngstock
(entries close Monday 7th May)

Friday 19th & Saturday 20th October

Annual Autumn Show and Sale of Bulls
(entries close Friday 31st August)

Saturday 24th November

North West Midlands & North Wales Cattle Breeders Club
Annual Autumn Show & Sale of Bulls and Females
at Welshpool Livestock Market
(in conjunction with Welshpool Livestock Sales)

Friday 14th December

Red Ladies Derby & Weaned Calf Show & Sale
(entries close Friday 9th November)

Head Office: Borderway Mart Rosehill Carlisle CA1 2RS

Telephone: 01228 406230 – Fax: 01228 406231

E-mail: info@borderway.com Website: www.harrisonandhetherington.co.uk

Alphabetical Bull Index

(All bulls marked * in the pedigrees are included in the reference)

AMPERTAINE ELGIN (MDG09-039) sire – Glenrick Venture, dam – Ampertaine Carla (by Samy). Elgin was sold for 32,000gns and is consistent breeder, progeny includes Ampertaine Hollywood 8,500gns Carlisle Feb 2014. Ampertaine Harmony 4,500gns Cowporation Dispersal Sale Carlisle March 2014. Ampertaine Hotshot, Reserve Intermediate Champion 28,000gns Carlisle May 2014. Trueman Isabella 9,500gns and Haltcliffe Hesta 5,500gns Carlisle May 2014. Ampertaine Interest 13,000gns and Ampertaine Impact 13,000gns Carlisle Oct 2014. Haltcliffe Imperial Reserve Junior Champion and sold for the sale top price of 28,000gns, Trueman Idol 17,000gns and Trueman Iglesias 12,500gns Carlisle Feb 2015. Cullagechan Instructor 16,000gns and Ampertaine Inferno 16,000gns Carlisle May 2015. Ampertaine Isadora 12,500gns, Ampertaine Inky, Ampertaine Imeria 4,500gns and Ampertaine Irishgirl 4,200gns Ampertaine sale Carlisle June 2015. Trueman Jukebox 12,000gns & Goldies Jetstream 7,500gns Carlisle October 2015. Ampertaine Jackpot Reserve Champion, 8,000gns Carlisle Feb 2016. Ampertaine Jefferason 20,000gns, Craigatoke Jackpot 15,000gns and Autside Jacobite 8,000gns Carlisle May 2016. Lomond Lexie 6,500gns and Rahoney Liberty 6,000gns Carlisle Red Ladies Derby Dec 2016. Cullagechan Lazio 17,000gns Carlisle Feb 2017. Goldies Linda 5,200gns, Ampertaine Lawson 18,000gns and Ronick Laddie 7,500gns Carlisle May 2017. Ronick Ladida 8,500gns and Ronick Maiden 6,800gns Ronick sale Carlisle July 2017. Gorrycamp Major 20,000gns and Grahams Michael Reserve Junior Champion and sold for 20,000gns Carlisle Oct 2017.

AMPERTAINE FOREMAN (MGD10-049) sire – Wilodge Cerberus, dam – Ampertaine Bathsheba (by Sympa). His progeny includes Loosebeare Ignition 8,200gns Carlisle May 2015. Ampertaine Ikea 6,000gns and Ampertaine Ingrid 4,500gns Ampertaine sale May 2015. Ballinloa Jaegerbomb Junior Champion and sold for 24,000gns, Ballinloa Jericho 10,000gns, Goldies Jeronimo 9,500gns & Ampertaine Jarvis 8,500gns Carlisle October 2015. Procter Liliac 4,000gns Carlisle Weaned Calf Sale December 2015. Eniver Jazzman 7,500gnd Carlisle Feb 2016. Goldies Jane 6,000gns Carlisle May 2016. Ballinloa Lazer 10,000gns, Ballinloa Lethal 10,000gns and Procters Laval Intermediate Champion and sold for 9,000gns Carlisle Oct 2016. Procters Leiha 8,000gns Carlisle May 2017. Ballinloa Lush Reserve Intermediate Champion and sold for 14,000gns, Procters Livingstone 7,500gns and Ballinloa Lambourghini 7,500gns Carlisle May 2017. Ballinloa Mountain 20,000gns and Ballinloa Master Senior male Champion and sold for 12,000gns Carlisle Oct 2017.

AMPERTAINE GIGOLO (MGD11-051) sire – Ampertain Commander, dam – Ampertaine Crystal (by Ronick Gains). Progent includes Trueman Jagger Overall Champion and sold for a new world record prize of 140,000gns and Ampertaine Jamboree Reserve Champion and sold for 45,000gns and Goldies Judge 11,000gns Carlisle October 2015. First three sons all won their respective classes in Oct 2015 and took Supreme and Reserve Championship to average £71,400. Other progeny includes Goldies Joker 14,000gns Carlisle Feb 2016. Goldies Juggernaut 10,000gns Carlisle May 2016. Ampertaine Lieutenant Reserve Supreme Champion 10,000gns Carlisle Oct 2016. Heathmount Leanna 7,500gns and Procters Legacy 24,000gns Carlisle May 2017.

CLARAGH FRANCO (RJT10-013) sire – Wilodge Vantastic, dam – Haltcliffe Avon (by Sympa). Junior Champion, Carlisle May 2011 soldfor 24,000gns. Progeny includes Norman Halo 8,800gns, Norman Hilary 7,500gns & Norman Helen 5,500gns Carlisle June 2013. Norman Hawk 15,500gns and Norman Hardy 7,800gns Carlisle Feb 2014. Norman Harvest 8,500gns Carlisle May 2014. Norman Ivan 10,000gns and Norman Irish 7,500gns Carlisle Oct 2014. Norman Inventor 22,000gns, Norman Infusion Supreme Champion and sold for 20,000gns and Norman Inesoco 7,500gns Carlisle Feb 2015. Lenagh IQ Reserve Overall Male Champion and sold for 13,000gns Carlisle May 2015. Norman Invincible 8,000gns Carlisle June 2015. Grahams Lorenzo 40,000gns, Grahams Lizzie 16,000gns and Grahams Lamont 5,000gns

Carlisle National Sale of Champion July 2016. Norman Hawk 8,000gns Millington Dispersal Carlisle August 2016. Norman Legacy 9,500gns Carlisle Oct 2016. Grahams Lilly Champion and sold for the top price of 32,000gns, Grahams Lobelia 10,000gns and Grahams Lisette 7,000gns Carlisle Red Ladies Derby Dec 2016. Grahams Murphy 9,000gns Carlisle Weaned Calf Sale Dec 2016. Norman Levi 10,500gns, Norman Lloyd 9,000gns and Norman Lance 8,000gns Carlisle Feb 2016. Norman Lick 7,000gns, Grahams Liz 7,000gns and Norman Lacey 5,500gns Carlisle May 2017.

CORRIDAN HAKKA (CDE12-1541) sire – Wilodge Cerberus, dam – Corridan Viola (by Goldies Oswald). Progeny includes Confluence Leyton Reserve Junior Champion and sold for 10,000gns Carlisle May 2016. He produces very clean, square and well fleshed calves that are born with ease.

DINMORE GOLDENEYE (DIR11-047) sire – Ronick Hawk, dam – Dinmore Elle (by Wilodge Vantastic). Full brother to 18,000gns Dinmore Goldcrest.

DRUMMIN EAGLE (IE131206390801) sire – Sympa, dam – Drummin Cliona (by Mas Du Clo). Bull of The Year 2010 Republic of Ireland

EDWARDS SIRLOIN (NPM -1712386) sire – First Choice, dam – Dollar Ante (by WLCC Dollar Bill). Progeny includes Bailea Black Ebony 8,000gns Carlisle May 2010. Goldies Black Forever 30,000gns Carlisle Feb 2012. Goldies Black Globetrotter 8,500gns Carlisle Oct 2012.

ELITE FOREVER BRILL (IE221062720723) sire – Wilodge Vantastic, dam – Ardlea Coillte (by Vison). Consistently breeds great calves. Progeny includes Brenmick Joy 10,000gns Carlisle Red Ladies Derby 2015. Castlenook Jojo 5,500gnd Carlisle Feb 2016. Lodge Lavendar 7,500gns Carlisle May 2016. Lodge Jemini 5,500gns Carlisle May 2016. Mpcarlands Lifetimefor 12,000gns Carlisle Oct 2016. Burnbank Maggiemay 9,000gns Carlisle Weaned Calf Sale Dec 2016. Trueman Led 8,500gns Carlisle May 2017.

GALLOIS (36-15-352-144) sire – Charmeur, dam – Noisette (by Jacot). Progeny includes Oddacres Lemmy 10,000gns (which is for a breed record for a weaned calf), Oddacres Ludwig 4,000gns Carlisle Weaned Calf Sale December 2015. He won Best Stock Bull and Progeny North East Limousin Breeders Club Herd Competition 2015 and was 3rd in 2016.

GLENROCK HUMDINGER (IE12-096) sire – Sympa, dam – Glenrock Spangle (by Kype Interrogate). He won Best Young Bull in the North West herd Competition 2013.

GRAHAMS UNBEATABLE (GV03-176) sire – Grahams Poncho, dam – Habitude (by Eclat). Sold for 35,000gns ILC Sale Carlisle Aug 2004 and carries a Beef value of LM+45. Progeny includes – Derriaghy Bobsyournuncle 10,500gns Carlisle Feb 2008.

HALTCLIFFE DOCTOR (RP08-788) sire – Rossignol, dam – Haltcliffe Usabelle (by Sympa).

Doctor was purchased jointly for 15,000gns as Intermediate Champion, Carlisle May 2010 – noted for his tremendous muscling. Doctor is sired by Rossignol the outstanding show calf producer for Messrs Richardson, Ghyll House. His dam, Haltcliffe Usabelle, won 1st prize cow in the stockjudging at the 40th anniversary open day and is a full sister to the Junior Female Champion ILC. Doctors' first son, Goldies Grandprix, sold for 8,500gns Carlisle Oct 12, Roxburgh Gurka Carlisle Junior Champion 12,000gns, a yearling heifer Goldies Gaynor sold for 9,000gns Carlisle June 2012. Goldies Infinity 8,000gns Carlisle May 2014. Goldies Ice 4,200gns and Goldies Black Jessie 4,200gns Goldies sale Carlisle May 2015. Goldies Jazz 14,000gns Carlisle Feb 2016. Procters Major 9,000gns Carlisle Oct 2017.

JALEX ITSALLGOOD (AFW13-7824) sire – Swarland Eddie, dam – Tyrone Dulani (by Hartsideanew Boumsong). Jalex Itsallgood won Junior Male Overall Junior and Reserve Male Champion Balmoral Show 2014 at 12 months old and Reserve Junior Champion RHS the same year. He is proving to be very easy calving and has a great temperament. Progeny includes Westpit Landlord 17,000gns Carlisle Oct 2016.

KAPRICO GERMANDER (SHJ11-006) Sire – Sympa, dam – Kaprico Erica (by Wilodge Tonka). Germander comes from an outstanding female line – his grand dam is Kaprico Tansy Intermediate Champion at the ILC and is full sister to Kaprico Ultimate (Royal Show Champion as a two year old heifer). Germander combines Ronick Hawk, Greensons Gigolo, Sympa and Wilodge Tonka and has a huge EBV and is breeding exceptional length, growth and quality as can be seen in Goldies Inchantress his first daughter (see lot 56). Goldies Indulge sold privately for a five figure sum. Germander's two sons at Stirling May 2015 sold for 5,500gns each. Progeny includes Goldies Inchantress Reserve Female Champion and sold for 8,000gns Carlisle Red Ladies derby 2015.

KILCOR ICEMAN (IE291598920446) sire – Fieldson Alf, dam – Kilcor Frostie (by Rocky). Progeny includes Grahams Mungo 14,000gns Carlisle Oct 2017.

LODGE HAMLET (CBM12-346) sire – Saphir, dam – Lodge Violet (by Broadmeadows Cannon). Progeny includes Pabo Mrmuscle 10,500gns and Barrons Max 7,500gns Carlisle Weaned Calf Sale Dec 2016.

NETHERHALL JACKPOT (KC14-1911) sire – Requin, dam – Cloughhead Ainsie (by Saiga)

NEUF (22-97-004-114) sire – Cassis, dam – Jungle (by Haricot). Progeny includes Millington China 7,800gns Carlisle Feb 2009. Wilodge Casino 11,000gns May 2009. Vagabond 8,800gns Greenwell Dispersal Aug 2010.

NORMAN ELY (NBB09-004) sire – Saphir, dam – Norman Betryst (by Heathmount Trojan). Progeny includes Millgate Lucy 7,500gns Carlisle Weaned Calf Sale December 2015.

ROUNDHILL HAMLET (IE241280241367) sire – Acajou, dam – Roundhill Egirofflee (by Mas Du Clo) – Hamlet is a son of Acajou one of the top bulls in France a different pedigree.

SAUNDERS DIMITRI (WFO08-162) sire Junior, dam – Saunders Verity (by Cloughhead Jurassic). Progeny includes Saunders Lualua 5,000gns Carlisle Weaned Calf sale December 2015.

TRUAMAN JAGGER (SLN14-6436) sire – Ampertaine Gigolo, dam – Trueman Grazia (by Haltcliffe Vermount). Trueman Jagger is the world record Limousin bull sold at Carlisle 2015 for 140,000gns. Progeny includes Trueman Mozart Overall Male Champion and sold for 15,000gns Carlisle Oct 2017. Trueman Jagger sired the last Carlisle Champion and Senior Female Champion (Foxhillfarm Madonna) Stars of the Future calf show 2017.

WILODGE VANTASTIC (WEY04-037) sire – Wilodge Tonka, dam – Ravenelle (by Jersey). Overall Champion and top price Carlisle May 2006 at 42,000gns. Progeny includes Wilodge Vontrapp 8,200gns, Goldies Conquest 12,000gns, Ironstone Cromwell 8,000gns, Goldies Comet Reserve Junior & Reserve Overall Male Champion selling for 23,000gns Carlisle Feb 2009. Marlepark Dreamcatcher 4,800gns (12mths of age) Carlisle Youngstock Sale May 2009. Wilodge Dallaglio 30,000gns & Reserve Overall Champion, Ballinloan Diamond 9,000gns Carlisle Oct 2009. Ironstone Diego 17,000gns Carlisle Feb 2010. Spittalton Drew 12,000gns, Craigatoke Damibull 10,000gns & Carrickadreen Dauphin 9,000gns Carlisle May 2010. Haltcliffe Dainsi 21,000gns Haltcliffe Sale May 2010. Elrick Excaliber 8,500gns Carlisle Oct 2010. Togherdoo Expert 12,000gns, Elderberry Eastyorkshireman 5,000gns Carlisle Feb 2011. Bankdale Exfactor Overall Overall Male Champion and sold for 38,000gns, Claragh Franco Junior Male Champion and sold for 24,000gns, Nebo Equador 13,000gns, Claragh Fantastic 11,500gns, Dolcorsllwyn Edi 9,000gns, Spittalton Fantastic 8,500gns, Ballinloan Envy 8,000gns, Slieve Fantastic 7,500gns Carlisle May 2011. Bankdale Elizabeth 35,000gns, Ironstone Colonel 13,500gns and Bankdale Ellie 9,000gns Bankdale dispersal sale Carlisle July 11. Sarkley Fayme 13,500gns Sarkley production sale Carlisle Aug 2011. Goldies Fandango 22,000gns & Overall Champion Carlisle Oct 2011. Melbreak Fairlight 9,000gns, Trueman Florence 8,800gns Red Ladies 2011. Newtown Freeman Irish National Male Champion (Tullamore) 2011, also Champion and top price Roscrea Oct 2011. Ermslies Frenchman 37,000gns, Millstone festin 16,000gns, Spittalton Fantastic 8,500gns, Plumtree Farley 13,000gns, Carmorn Firstclass 12,000gns & Dinmore Fortune 7,500gns Carlisle Feb 2012. Glenrock Fortune 16,000gns, Paramor Filippo 15,500gns, Heathmount Frenchconnection 15,000gns, Wilodge Vantastic 12,000gns and Spittalton Finn 8,200gns Carlisle May 2012. Goldies Flojo 10,500gns and Glitzzy 6,500gns Carlisle June 2012. Moloskey Ger 12,000gns Carlisle Oct 2012. Sarkley Goldenjen 11,000gns and Sarkley Georgette 5,200gns Sarkley sale Oct 2012. Nebo Favourite 8,500gns Red Ladies Derby Carlisle Dec 2012. Glenrock Garibaldi 13,000gns Carlisle Feb 2013. Goldies Goldfinger 21,000gns & Intermediate Champion Carlisle May 2013. Goldies Heiress 7,000gns, Goldies Grace 6,800gns, Goldies Geranium 6,200gns, Goldies Faith 5,800gns, Goldies Frances 5,000gns Carlisle June 2013. Gritstone Humdinger 8,000gns Carlisle Feb 2014. Nebo Favourite 9,000gns & Ironstone Gandi Cowporation Dispersal Carlisle March 2014. Roxburgh Hoodoo 18,000gns, Foxhillfarm Impecabull 14,000gns and Foxhillfarm Inthegold 12,500gns Carlisle May 2014. Glenrock Elusive 10,000gns, Glenrock Sale Carlisle August 2014. Roxburgh Hannah 5,000gns Carlisle Feb 2015. Brockhurst Howzat Champion Female and sold for 24,000gns Carlisle Red Ladies Derby 2015. Roxburgh Ideal 7,500gns Carlisle Feb 2016. Claragh Layla 18,000gns Carlisle May 2016. Millington Highlight (Millington Limelight at foot) new Cow & Calf breed Record of 50,000gns Millington Dispersal Carlisle August 2016. Swalesmoor Isla 8,500gns Carlisle Oct 2016. Foxhillfarm Mary 15,000gns Carlisle May 2017.

HEALTH AND SAFETY RULES HARRISON & HETHERINGTON LIMITED NOTICE TO ALL VISITORS AND TRADERS PLEASE READ AND OBSERVE THE FOLLOWING

All visitors and traders on site will be responsible for ensuring that they and their employees or sub-contractors engaged by them comply with all legal requirements, including the Health and Safety At Work etc., Act 1974, The Management of Health and Safety At Work Regulations, The Provision And Use of Work Equipment Regulations, etc.

All visitors and traders will be responsible for ensuring that their operations in no way affect the integrity of the company or its fire, safety or security arrangements and in no way compromise the health and safety and welfare of other visitors to and or employees of Harrison & Hetherington.

Although it is the visitors and traders responsibility to ensure that plant, equipment and systems in work are safe, Harrison & Hetherington Limited reserve the right to ask any visitor or trader to leave the market for any breaches in the Health and Safety Rules and/or Regulations.

Vendors must inform Harrison & Hetherington Limited of any livestock due to attend the market whose temperament, behaviour or condition may call for additional precautions for its safe handling.

When loading or unloading livestock handlers must ensure that the dock and vehicle gates are securely fixed so as to prevent the escape of animals.

Traders are responsible for providing and maintaining suitable livestock handling equipment. They should ensure that livestock handlers are fit, experienced in livestock handling and familiar with the livestock in their charge.

Children must not be permitted in any area where they may be at risk from livestock or machinery.

In the case of bulls, during the period when the show/sale is open to visitors, bulls in stalls or pens should not be left unattended. If the handler is temporarily absent, arrangements should be made with another vendor, steward or member of Harrison & Hetherington staff to oversee the bull until the handler returns.

Handling of Livestock at shows and sales: Harrison & Hetherington Limited recommend that an adult person should accompany any junior person during the showing/sale of livestock in the ring and reserves the right to intervene at any point if, in the company's opinion, the person showing the livestock is at risk in undertaking that activity.

Passageways must be kept clear at all times during the auction sale. **PLEASE DO NOT STAND IN THE SALE RING ENTRANCE AND EXIT PASSAGES.**

The auction ring man escapes and refuges must be kept clear at all times.

All portable electrical equipment supplied and/or used by visitors and traders must be safe and fit for the purpose and should have a valid portable appliance test certificate.

AUCTIONEER'S TERMS & CONDITIONS OF SALE

(Incorporating the Auctioneer's
Terms and Conditions)

1. The biddings to be regulated by the Auctioneers and the highest bidder, subject to the Vendor's reserve (if any), to be the purchaser. No bid shall be retracted and if any dispute should arise between two or more bidders, the Lot in dispute to be put up again and resold, or the Auctioneers may determine the dispute at their own discretion and their decision shall be final. The Auctioneers reserve the right to refuse the bid of any person without being called upon to give reason for such action.
2. The Purchaser to give his full name and dwelling place and pay for all Lots purchased immediately at the close of sale. No Lot or Lots shall be removed from the sale premises until paid for and a pass-out slip obtained from the Auctioneer's clerk but each and every Lot shall immediately at the fall of the hammer be considered as delivered and be and remain in every respect at the absolute risk and expense of the respective purchaser or purchasers thereof and shall be removed from the sale premises at the purchaser's expense. The right of property shall not pass until the full purchase price is paid.
3. Purchasers paying by cheque must be prepared, if required, to produce a banker's reference. As a result of the Money Laundering Regulations (2003) the auctioneers are unable to accept cash payments in excess of nine thousand pounds sterling for any single or linked purchase transaction.
4. All statements in the catalogue, or made by the Auctioneers at the time of sale, also the correct identification of the animals, are the entire responsibility of the Vendors. The Auctioneers take no personal responsibility for the correctness of such statements or identities.
5. All statements in the catalogue, or any made by the Auctioneers at the time of sale relating to any veterinary or other tests are to be taken as statements of fact only. No such statements shall guarantee the purchaser of any animal against loss arising from the subsequent reaction of such animal to any test administered after the sale and the Vendors shall not be liable in any way should this occur.
6. All stock is sold subject to the Conditions of Sale recommended for use at markets by the Livestock Auctioneers' Markets Committee for England and Wales except in so far as these conflict with any Special Conditions applicable to the sale of pedigree stock, when the latter Conditions shall prevail.
7. Neither the Vendors nor the Auctioneers will be responsible for any accident or injury to persons or property, through fire or any other cause whatsoever, nor for any damage by animals prior to, during or after the sale.
8. No undertaking by the Auctioneers or their servants to take charge of any Lot or Lots after the sale or to forward them to their destination shall be held to impose upon the Auctioneers any legal obligation or vitiate any of these Conditions.
9. Inasmuch as the Auctioneers act as agents for a disclosed principal they shall not be considered personally responsible for any default on the part of either purchasers or Vendors and the remedy shall be against them only and not against the Auctioneers.
10. If these conditions are unfulfilled, the Vendors or Auctioneers shall have the power to resell the Lots, retaining any surplus and charging any deficiency and expense to the defaulter.
11. You have a right to know how we will use the information you have provided to us. We may share the information with other members of our group and may make this information available to relevant media groups and other interested parties on request. We and other members of the group may contact you by telephone, e-mail, post or fax to inform you of products or services available. If you do not want to be contacted for marketing purposes or do not wish your information to be made available to any other parties please notify us in writing.

HARRISON & HETHERINGTON LTD

Schedule of Classes

Judge: Kim Montgomery

Ballyrobin Road, Antrim, Co. Antrim, N. Ireland

Class		1st	2nd	3rd
10	Best Weaned Bull Calf	£15	£10	£5
11	Best Weaned Heifer Calf	£15	£10	£5

CLASS	1st	2nd	3rd	4th	5th
Bull Calf					
Heifer Calf					

Kindly Sponsored by





HARRISON & HETHERINGTON

Farmstock Auctioneers, Brokers & Valuers

The UK's Leading Livestock Marketing Company

- **Nine Sale Centres**
- **Pedigree & Commercial Livestock**
- **Official Society Sales of Beef, Dairy & Sheep**
- **Tractors, Machinery & Commercial Vehicles**
- **Specialist Livestock Sales, Equine & Events**
- **Professional Valuations**
- **Online Internet Bidding**





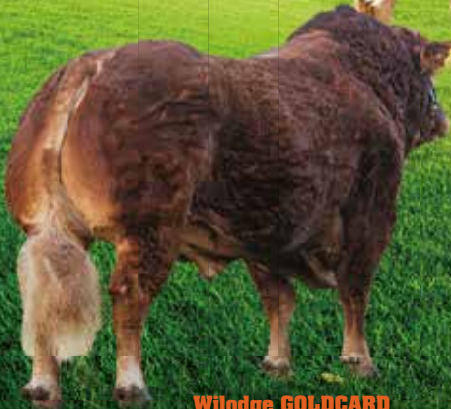
SIGNATURE BEEF

The Limousin range

Netherhall JACKPOT
Sire: Requin
Dam: Cloughhead Ainsi



Wilodge GOLDCARD
Sire: Wilodge Cerberus
Dam: Sarkley Bellola



Mereside LORENZO
Sire: Jacot
Dam: Mereside Dawnmarie



Our continually strengthening Limousin portfolio features breed-leading bulls including these three that all feature in the top 1% for Beef Value and top 5% for Muscle Depth. A globally respected line-up with show-stopping phenotypes and figures to match.

Freephone: 0800 783 7258

www.cogentuk.com