



**LIMOUSIN**

**BRITISH LIMOUSIN CATTLE SOCIETY  
BALLYMENA LIVESTOCK MART**



**SALE OF FEMALES  
MONDAY 6 MAY 2024  
JUDGING AT 10 AM » AUCTION AT 12 NOON**



**CATALOGUE**  
**for**  
**THE BRITISH LIMOUSIN**  
**CATTLE SOCIETY LTD**

**Sale**  
**of**  
**10 Pedigree Limousin Females**

(Sold under BLCS Auction Rules & Conditions of Sale)

**BLCS CEO: Alice Swift**

**Telephone: 02476 696500**

**E-mail: [info@limousin.co.uk](mailto:info@limousin.co.uk)**

**[www.limousin.co.uk](http://www.limousin.co.uk)**

**CONCORDE HOUSE, 24 WARWICK NEW ROAD,  
LEAMINGTON SPA, CV32 5JG**

## **N.I. Limousin Cattle Club Sale Arrangements**

**Judge:** Martin Conway, Craigatoke Herd, Plumbridge  
**Vets:** Fraser Tweed, The Mill veterinary clinic, Broughshane  
**BLCS Reg Rep:** Brian McAuley  
**Stewards:** N.I. Limousin Cattle Club  
**Club Chairman:** Kieran McCrory 07834 543803  
**Club Contact:** Lorna Hunter 07881435042  
Email: nilimousinattleclub@gmail.com

## **ARRANGEMENTS FOR SALE Monday 6th May**

**– All animals to be on the premises by 6am –**

**Inspection between: 7.30am - 9am**

**Sale held under the British Limousin Cattle Society's Auction Sale Rules and subject to recommended Conditions of Sale of the National Beef Association.**

**There will be an upset price of 2,500 guineas on each bull presented for sale.**

## **GENERAL INFORMATION & SALE NOTES**

**REGISTRATIONS:** All stock in the Sale are registered with the British Limousin Cattle Society (02476 696500).

**SEMEN ROYALTY SCHEME BULL REGISTER:** Purchasers are asked to note that where a female is catalogued as being served/inseminated by a “Semen Royalty” Sire the appropriate royalty will be payable by the purchaser prior to registration of the calf.

**PEDIGREE TRANSFERS:** Official Pedigree Transfers will be effected by the Auctioneers and the British Limousin Cattle Society as soon as possible after the Sale. Full Pedigrees will be transferred free of charge to all members.

**NBA WARRANTIES:** This Sale is also held subject to the Special Terms and Conditions of Sale recommended for Sales of Pedigree Beef Cattle by the National Beed Association. The preparation of these Terms and Conditions has proved a lengthy and costly process and, in order to defray the legal and other costs involved, and to provide a continuing source of revenue to assist the Association in its vital work for Pedigree Cattle Breeders, the Council of the Association has decided that a special levy, amounting to £3 per male and £2 per female head/lot sold (plus VAT) shall be charged to each Purchaser.

---

# Vendors Index & Herd Health Summary

## Ballymena 6 May 2024

---

The pedigree, performance, DNA, health information and footnotes included in Society sale catalogues is as supplied by, or on behalf of the vendor. The responsibility for the accuracy of the information therefore rests solely with the vendor and not with the British Limousin Cattle Society Ltd (BLCS). It should be noted that the Estimated Breeding Values for all animals change over time, as new performance records come available. While the BLCS and Genesure Ltd seek to ensure that the information contained in catalogues is accurate at the time of printing in accordance with their terms and conditions, no warranty is given in respect thereof by the BLCS and, to the maximum extent permitted by law, the BLCS shall have no liability for any loss, damage or injury howsoever caused (including that caused by negligence) or suffered directly or indirectly in relation to information and opinions contained in or omitted from this publication. Genesure Ltd's liability is limited to the extent set out in its terms and conditions (a copy is available from the BLCS office upon request).

---

<b>Callion, J &amp; A</b>	<b>ASHHOLLOW</b>	<b>UK 9636565</b>	<b>Lot 72,76,78</b>
---------------------------	------------------	-------------------	---------------------

16 Lisgarity Road, Dromore, Co Tyrone, , BT78 3ET (TB1) (02882 897704)

- Consigned from a 1-year TB testing interval holding -
  - Johne's Risk Level1 -
  - Member of a CHeCS controlled health scheme for BVD & Johnes -
  - Tested virus free for BVD -
  - Routinely vaccinating against BVD & Lepto -
- 

<b>Loughran, M</b>	<b>MILLGATE</b>	<b>UK 9630001</b>	<b>Lot 79,80</b>
--------------------	-----------------	-------------------	------------------

1 Mill Road, Dungate Dunamore, Cookstown, Co Tyrone, BT80 9NU (TB1) (02886 751780)

- Consigned from a 1-year TB testing interval holding -
  - Johne's Risk Level1 -
  - Member of a CHeCS controlled health scheme for BVD & Johnes -
  - Tested virus free for BVD -
  - Routinely vaccinating against BVD -
- 

<b>McGeehan, John I &amp; Shane J</b>	<b>SLIEVE</b>	<b>UK 9581574</b>	<b>Lot 74</b>
---------------------------------------	---------------	-------------------	---------------

118 Mullaghfad Road, Fivemiletown, , Co Tyrone, BT75 0JJ (TB1) (028 8952 1792)

- Consigned from a 1-year TB testing interval holding -
  - Johne's Risk Level1 -
  - Member of a CHeCS controlled health scheme for BVD & Johnes -
  - Accredited free for BVD -
  - Routinely vaccinating against BVD & Lepto -
-

---

**O'Kane & Sons, John**                      **GLENEAGLE**                      **UK 9491156**                      **Lot 77**  
32 Brockagh Road, Garvagh, Coleraine, Co Derry, BT51 5DG (TB1) (02829 558157)  
- Consigned from a 1-year TB testing interval holding -  
- Johne's Risk Level1 -  
- Member of a CHeCS controlled health scheme for BVD & Johnes -  
- Accredited free for BVD -  
- Tested virus free for BVD -  
- Routinely vaccinating against BVD -

---

**Quail, J A**                                      **LYNDERG**                                      **UK 9271872**                      **Lot 71**  
Northwood, Tullyear, Banbridge, Co Down, BT32 3RL (TB1) (028 4062 3452)  
- Consigned from a 1-year TB testing interval holding -  
- Johne's Risk Level1 -  
- Member of a CHeCS controlled health scheme for BVD & Johnes -  
- Tested virus free for BVD -  
- Routinely vaccinating against BVD -

---

**Savage, RAG**                                      **AGHADOLGAN**                      **UK 9541606**                      **Lot 73,75**  
31 Gortnessy Road, Drumahoe, Co Londonderry, , BT47 3NL (TB1) (07828520224)  
- Consigned from a 1-year TB testing interval holding -  
- Johne's Risk Level1 -  
- Member of a CHeCS controlled health scheme for BVD -  
- Accredited free for BVD -  
- Tested virus free for BVD -

---



## HOW TO USE GENETIC INFORMATION IN THIS CATALOGUE

Sale catalogues contain specific information relating to the genetics of each animal. This is a short explanatory note to assist when selection decisions are being made.

**Lot 10 Mr A. Breeder**

**Concorde Magician**  
**Born 18/04/2016**      **XY16-4321**      **UK 123456/654321**

Got by AI 1      Natural Calf 3

Myostatin: F94L/NT8Z1 2      Gen. Colour: Hom. Red 3      Polled: Hom. Horned 4

gs. ANYGRANDSIRE 87-12-345-678      ggs. ANYGREATGRANDSIRE 36-12-345-678  
 Sire Concorde Anysire **ABC05-123**      ggd. ANYGREATGRANDDAM 87-87-654-321  
 gd. ANYGRANDDAM 23-12-345-678      ggs. ANOTHERGREATGRANDSIRE 32-12-345-678  
 ggs. ANOTHERGRANDSIRE 32-87-654-321      ggd. ANOTHERGREATGRANDDAM 23-87-654-321  
 Dam Concorde Anydam **ABC05-876**      ggs. THISGREATGRANDSIRE 19-12-345-678  
 gd. ANYHERD GRANDDAM XYZ11-123      ggd. THATGREATGRANDDAM 19-87-654-321  
 ggs. ANYHERD GREATGRANDSIRE XYZ11-876      ggd. ANYHERD GREATGRANDDAM XYZ11-654

a

Trait	EBV	Acc %
Gest. Length (days)	-0.3	96%
Birth Weight (kg)	0.6	98%
Calving Ease (%)	-1.4	96%
Mat.Calv. Ease (%)	1.9	86%
200 Day Growth (kg)	38	98%
400 Day Growth (kg)	79	97%
Muscle Depth (mm)	4.7	92%
Fat Depth (mm)	0.1	68%
BEEF VALUE	61	97%
Age to Slaughter GEBV (days)	-17	89%
Carcase weight GEBV (kg)	26	91%
RETAIL VALUE (of prime cuts)	42	91%
200 Day Milk (kg)	2	63%
Age at 1st Calv. GEBV (days)	16	83%
Calving Interval GEBV (days)	-4	70%
Scrotal Circ (cm)	0.6	93%
Docility (%)	0.5	70%

5

Adjusted Wts(kg)	
100	189
200	365
300	554
400	713
500	0
Scanned	YES

6

b

Index 70 80 90 100 110 120 130 Index      Analysis Date: 03/11/2020



## 1 Birth Type

'Got by AI' indicates whether the calf was a result of an AI service. If blank, the dam was naturally served. 'Natural calf' indicates the calf was born to its biological dam. 'ET calf' indicates the calf was born as a result of embryo transplant.

## 2 Myostatin

"Not tested" indicates that no Myostatin test is currently available for the animal. Full details on the Myostatin variants and their effects on performance can be found on the Limousin Society website [www.limousin.co.uk](http://www.limousin.co.uk), search in 'performance programmes'. In summary:



### The Variants:

#### F94L

Animals with two copies of this gene (ie F94L/F94L) exhibit an increase in muscling (by up to 19%) with **no** associated increased in calving difficulty, lowered fertility or longevity and by far the majority of animals in the breed carry this gene. Heterozygous animals (those with one copy of the gene) also exhibit these characteristics but not to the same degree.

#### NT821

Animals with two copies of the gene (ie nt821/nt821) will exhibit characteristics of larger loin depths, reduced fat depths and large, rounded rump and thighs. However, unlike F94L, animals with two copies may also have slightly heavier birth weights bringing with it the potential for more difficult calvings, If animals are 'heterozygous' with F94L (ie F94L/nt821) they will still exhibit quality carcass characteristics but are less likely to be affected by more difficult calvings.

#### Q204X

Animals with two copies of the gene (ie Q204X/Q204X) will exhibit characteristics of larger loin depth, reduced fat cover and greater meat tenderness. However, they may also have the potential to exhibit larger birth weight and, if females, slightly reduced milking ability. Animals that are 'heterozygous' with F94L (ie F94L/Q204X) will still exhibit quality carcass characteristics but are less likely to be affected by larger birth weights and reduced milking ability.

Two further variants of Myostatin exist in the population but are relatively uncommon in their occurrence. Known as nt419 and E291X, their effects are similar to nt821 and Q204X respectively.

### The recognised benefits of Myostatin are:

- ✓ **Increased Meat Yield** – by up to 19%.
- ✓ **More feed efficient**
- ✓ **Higher meat quality** – increased tenderness, reduced fat content, higher polyunsaturated fats

## Using Myostatin information

**An important factor to remember is that carcass traits (muscling, fat cover etc), calving traits and milk traits in cattle are controlled by MANY genes. Myostatin is only one of them and, as such, it is not an absolute predictor of an animal's performance.**

A Myostatin genotype is a further bit of information that may help your decision, but it should be used in conjunction with wider information such as Estimated Breeding Values (EBVs), which bring together information of actual performance from the animal itself, its herdmates and its relatives to predict genetic merit, and your own judgment on type and pedigree.

### 3 Genetic Colour

Colour and polled/horned genes typically come in pairs called alleles. One is inherited from the sire and one from the dam. Where an animal's alleles are the same, it is said to be 'Homozygous' (Hom.) Where the alleles are different (because there is more than one variant of the gene, the animal is said to be 'Heterozygous' (Het.)



"Hom. Red" – animals will be red and will pass on red genes.

"Hom. Black" – animals will be black and will pass on black genes. All calves will be black, since black colour genes are dominant.

"Het. Black" – animals will be black and will pass on either a red or black gene.

"Het. Red" – animals will be red and will pass on a red gene or a colour gene known as the 'wild type' that is non-colour determinate. (The coat colour of calves inheriting the wild type gene will be governed by the gene they inherit from the other parent. It is rare, but it is also possible for an animal to be homozygous for the wild type gene, in which case they will be reddish/brown to brownish/black).

### 4 Genetics for Horned/Polled Status

A bull that is "Hom. Polled" - will be polled himself and all calves will be polled (since he only has polled genes to pass on and they are dominant).

A bull that is "Het. Polled" – will be polled himself and will produce some polled and some horned calves (assuming the cows are all horned).

A bull that is "Hom. Horned" – will be horned himself and will pass only horned genes to his calves.

For more information on both Genetic Colour and Polled/Horned, go to [www.limousin.co.uk](http://www.limousin.co.uk), search in 'performance programmes' or scan the QR code above.

## 5 Estimated Breeding Values and Genomic Estimated Breeding Values (EBVs & GEBVs)

EBVs & GEBVs are expressed in the same unit as the recorded trait (eg kgs for 400 Day Weight, mm for Muscle Depth etc) are relative to the Breed Average.

a) In sale catalogues, **Breed Average for each trait is represented by the vertical line that is central on the bar chart...** a

- ✓ Bars that lie to the right of that line indicate EBVs/GEBVs that are above average. The further to the right they lie, the higher above Breed Average they are.
- ✓ Equally, bars that lie to the left of the line indicate EBVs/GEBVs that are below Breed Average. The further to the left they are, the further below Breed Average they are.

b) Accuracy Values (Acc%) are expressed as a % and indicate the quantity and quality of records used to produce each EBV, GEBV or Index. The closer they are to 100%, the more accurate the EBV. Highly accurate values are less likely to change over time. b

c) The numeric EBV & GEBV values on the charts can be used to further refine comparison with the breed using the Breed Benchmark which is updated annually.

For more information on EBVs and GEBVs, go to [www.limousin.co.uk](http://www.limousin.co.uk) and search under 'Breed Improvement' in the main menu or scan the QR code opposite.



**EBV, GEBV and pedigree information on all Limousin cattle are just a few internet clicks away...**

**Step 1:** Go to [www.taurusdata.co.uk](http://www.taurusdata.co.uk)

**Step 2:** In the 'All Breeds Quick Search' box type the name or ear number of the animal you are interested in or click on the 'Breeder Search' button to look at all animals belonging to or bred by a particular breeder.

The site will then tell you the animal's owner/breeder details, its breeding values, its pedigree and list its progeny with full links to all of their information.

## 6 Adjusted Weights

These are the 'raw' weights recorded for the animal throughout its early growing stages. They are adjusted for age, but are not adjusted for any other factor such as management, nutrition, dam age, differences between farms etc.



For further information or if you have any query, please let us know - telephone 02476 696500, e-mail [info@limousin.co.uk](mailto:info@limousin.co.uk) or speak to Society staff and Council members attending the sale.



## 2024 Limousin Breed Benchmark

Trait	Bottom			Breed Average	25%	Top	
	1%	10%	25%			10%	1%
Gest. Length (days)	4	2	1	-0	-1	-2	-4
Birth Weight (kg)	3.4	2.3	1.6	0.8	0.1	-0.6	-1.7
Calving Ease (%)	-5.3	-3.5	-2.5	-1.3	-0.2	0.9	2.7
Mat.Calv. Ease (%)	-2.1	-1.2	-0.7	-0.2	0.3	0.8	1.6
200 Day Growth (kg)	-10	1	7	14	21	28	38
400 Day Growth (kg)	-18	2	14	27	40	52	72
Muscle Depth (mm)	-1.5	0.1	1.1	2.1	3.1	4.1	5.7
Fat Depth (mm)	-0.4	-0.3	-0.2	-0	0.1	0.2	0.4
<b>BEEF VALUE</b>	<b>LM10</b>	<b>LM19</b>	<b>LM25</b>	<b>LM31</b>	<b>LM37</b>	<b>LM42</b>	<b>LM51</b>
200 Day Milk (kg)	-4	-3	-2	-0	1	2	4
Age at first calf (days)*	67	51	41.6	31.2	20.8	11.5	-4.6
Calving interval (days)*	19.8	13.8	10.3	6.4	2.5	-1	-7
Longevity*	-0.31	-0.23	-0.19	-0.14	-0.09	-0.04	0.04
Calf Survival*	-0.06	-0.03	-0.02	-0.01	0.01	0.02	0.04
Scrotal Circ (cm)	-0.8	-0.4	-0.2	0.1	0.3	0.5	0.9
Docility (%)	-2.9	-0.9	0.3	1.6	2.9	4.1	6.2
Age to slaughter (days)*	20	10	4	-3	-10	-16	-26
Carcase weight (kg)*	-6.8	1	5.5	10.5	15.6	20.1	27.9
Fillet (kg)*	0.09	0.13	0.16	0.18	0.21	0.23	0.27
Striploin (kg)*	0.05	0.16	0.23	0.31	0.38	0.45	0.57
Rump (kg)*	0.2	0.31	0.37	0.44	0.51	0.58	0.69
Topside (kg)*	0.58	0.83	0.98	1.14	1.3	1.45	1.7
Silverside (kg)*	0.63	0.93	1.1	1.29	1.48	1.65	1.94
Knuckle (kg)*	0.2	0.32	0.39	0.47	0.55	0.62	0.74
<b>Retail Value*</b>	<b>LM16R</b>	<b>LM23R</b>	<b>LM27R</b>	<b>LM32R</b>	<b>LM37R</b>	<b>LM41R</b>	<b>LM48R</b>

For Enquiries: The British Limousin Cattle Society Tel 02476 696500 Email info@limousin.co.uk

\* Where animals have been genotyped, the breeding values for these traits will be Genomic Breeding Values (GEBVs). Publication of GEBVs is at animal owners' discretion. If an animal has not been genotyped, the breeding value will be a conventional Estimated Breeding Value (EBV). Whether a breeding value is an EBV or a GEBV is noted alongside each value.

Please note that EBVs and GEBVs are interchangeable for the same trait. For example, an animal with a Calving Interval GEBV can be directly compared to an animal with a Calving Interval EBV. A link to further information on all EBVs and GEBVs is below.

## FOR INFORMATION

### Breeding Indexes

**EBVs can be combined in to selection indexes to meet wider breeding objectives...**

<b>Calving Value</b>	An economic indicator of the collective value of Gestation Length and Calving Ease
<b>Beef Value</b>	An economic indicator of the collective value of Birth Weight, Calving Ease, 400-Day Growth, Muscle Depth and Backfat Depth
<b>Retail Value</b>	An economic indicator of the collective value of Fillet, Striploin, Rump, Topside, Silverside and Knuckle at 600 days of age and a standard carcass weight of 350kgs.

### NB: Using Calving Ease and Maternal Calving Ease

**Calving Ease EBV** *Predicts how easy a bull's own calves will be born.*

**Maternal Calving Ease EBV** *Predicts how easily a bull's daughters will calve.*

To search the Limousin database by Breeder, by EBVs/GEBVs and/or by Individual Animal go to [www.taurusdata.co.uk](http://www.taurusdata.co.uk) and click on 'Beef Search'

For more information on EBVs and GEBVs please go to [www.limousin.co.uk](http://www.limousin.co.uk) and click on 'Performance Programmes' or get in touch on the numbers below.



---

# HERD HEALTH AT BRITISH LIMOUSIN CATTLE SOCIETY (BLCS) COLLECTIVE SALES

## **Introduction**

Herd health rules were introduced by the BLCS at nominated Collective Society Sales and these are now in place at all BLCS Collective Sales (Stirling February & October; Carlisle February, May, October & December; Brecon May & November and Ballymena February, May, October). The principal aim is to standardise herd health declarations and information presented in order to provide both members and customers alike with clear, accurate herd health information at the point of sale and within the given sale catalogue. As such it is attractive and informative for customers and aims to further raise the level of buyer confidence.

## **BLCS Herd Health Rules have two principal elements:**

Part 1. Herds selling at the Collective Society Sales have to be members of, and adhering to, the terms of a CHeCS approved Herd Health Scheme. At a minimum, this must include a whole herd test for Johne's disease.

Part 2. All animals male and female, including calves at foot, presented at the Collective Society Sales be EITHER from a BVD Accredited Herd within a CHeCS approved Herd Health Scheme OR to have been BVD tested virus free.

## **Herd Health Declaration**

The sale entry form is accompanied by a Herd Health Declaration form asking vendors questions regarding for example: TB status; membership of CHeCS ([www.checs.co.uk](http://www.checs.co.uk)) health schemes (AFBI Cattle Health Scheme, HiHealth Herdcare (Biobest), & Premium Cattle Health Scheme (SRUC) and Johne's, BVD, IBR and Lepto status. Online entries also require the Herd Health Declaration form to be completed.

## **Is the Herd Health Declaration compulsory?**

The Herd Health Declaration is compulsory at all Collective Sales. For reasons of clarity and to provide purchasers with the most accurate information available, vendors are required to complete this at time of entry.

## **What Other Health Information may be displayed?**

It should be noted that the Herd Health information provided in the catalogue relates to whole herd status. Information relating to specific animals entered in the sale should be requested from the vendor.

Vendors are encouraged to apply to their respective CHeCS health scheme for individual animal health cards for display on pens. For an individual animal's test results, or vaccination histories, regarding BVD, IBR, Lepto or Johne's, these are permitted above the sale pens only upon presentation of a signed veterinary declaration to verify that the animal concerned has had a clear test.

---

Again, for reasons of practicality, no health information notes are to be put in the catalogue footnotes by vendors. Similarly, the Society has requested that no declarations on health information be given by the auctioneer during the sale. Again, the sole purpose of this is to avoid confusion and to try and ensure that the information provided is done accurately, fairly and in a standardised format in the catalogue. This point has been agreed with the auctioneers.

### **Johne's Risk Levels**

The Herd Health Declaration includes a section where breeders are able to indicate their Johne's Risk Level, once known.

It is a condition of BLCS Collective Sales that animals from herds that are Johnes Risk Level 5 are not permitted to be sold. Should you have any queries regarding the new Johne's Risk Level classification, please contact your respective CHeCS health scheme.

### **What if a vendor is selling an animal/s that he did not breed?**

Vendors are still requested to fill in the Herd Health Sale Declaration accordingly. Prospective customers are advised to speak to vendors directly to acquire accurate health information on animals offered but not bred by the seller.

### **Feedback & more information**

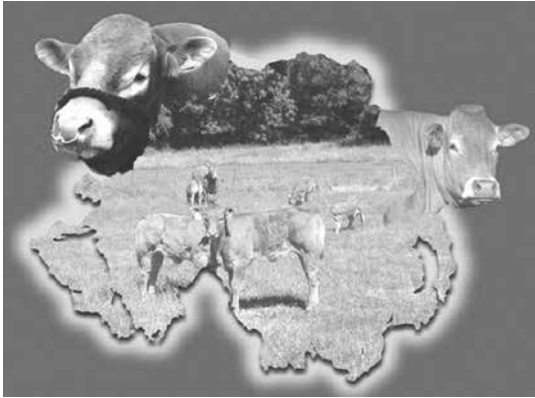
The Society welcomes members' and customers' feedback on the Herd Health Declarations and health policy at sales. If you have further questions, please speak to the Society representative, Alice Swift or the Auctioneers.

### ***Appendix from National Beef Association bull breeding warranty.***

***4.2 Trial Period*** *The purchaser shall give the bull sufficient time and opportunity to prove itself capable of getting stock by natural service while applying the standards of good husbandry and management as per Appendix A and, subject to clause 4.3 hereof, in any event within six calendar months of the date of sale, or within six calendar months of attaining the age of fourteen months (whichever is the later) (THE TRIAL PERIOD). A claim for infertility or incapability will not normally be accepted in the case of an inexperienced bull until he has been allowed a minimum of three natural heat cycles with the females.*

***4.3 Deferring the trial period.*** *If upon purchase of the bull it is found impracticable for the purchaser to try the bull fairly within the Trial Period stated in Clause 4.2 above due to the Purchasers normal calving programme, the Purchaser shall on the day of the sale, or within the next seven days, give the Auctioneers notice in writing of the month in which it is proposed to commence using the bull. At the discretion of the vendor (in consultation with the Auctioneers, if applicable) the Vendor may defer the date of the commencement of the trial period of three calendar months (THE DEFERRAL PERIOD) Acceptance or otherwise of the Purchaser's written request, shall be conveyed to the Purchaser by the Auctioneer in writing, within seven days of the request being made.*

***If the Trial Period is deferred the bull should not be used during the Deferral Period***



**LIMOUSINS IN BALLYMENA**  
**PURCHASER'S DETAILS**

Name .....

Address .....

.....

.....

Lot No. ....



---

## CONDITIONS OF SHOW OR SALE

1. Each item must be bona fide the property of the exhibitor.
2. The highest bidder to be the buyer, and if any dispute arises between the bidders, the decision of the Auctioneer shall be Final, or at his discretion the lot in dispute shall immediately be put up again and re-sold. The Auctioneer reserves the right of refusing the bid of any person and regulates the bidding, and no bidding is to be retracted.
3. The purchasers to give their names and places of abode in writing and pay the full purchase money for each lot at the fall of the hammer ( if required ); in default of which the lot or lots so purchased may immediately be put up again and re-sold.
4. No lot or lots shall be removed from the premises before the sale, or till paid for, but each and every lot shall, immediately at the fall of the hammer, be considered as delivered, and be and remain in every respect at the absolute risk of the respective purchasers thereof, and shall be removed from the place of sale at the purchaser's expense.
5. If any purchaser shall fail to comply with the above conditions, or any part of them, the Auctioneers shall be at liberty either to recover in full the amount of the lot or lots bought by such purchaser, without reference to any delivery or acceptance of the lots or lots other than first delivery by the fall of the hammer, or to re-sell any lot or lots bought by the purchasers, either by public or private sale; and the full amount of the purchase money at the present sale, or the deficiency ( if any ) arising from such second sale, shall be made good by the defaulter at the present sale, and be recoverable as and for liquidated damages.
6. No money will be paid to the proprietor for any lot sold, unless the account be cleared by the purchaser and the Auctioneers will not be answerable for any deficiency that may arise on the re-sale of any uncleared property.
7. Animals are present on the sole responsibility of owners, whose duty it is to keep each exhibit under proper control at all times, whether in pen or in show or sale rings, or in transit within the centre. Neither the Auctioneers, the organisers nor the Sponsors, nor any of their officials or employees will be liable for damage or injury caused by any animal's behaviour, including overnight.
8. Purchasers are to understand that, although every reasonable precaution will be taken to ensure the safety and welfare of the animals exhibited, the Auctioneers will not be responsible for loss, or accidents of any kind, that may occur. Nor will the Auctioneers or vendors be accountable for any accident that may occur to any person attending the sale, whether as a visitor. or in any other capacity.
9. The pedigree, history and description of each animal is guaranteed by the owner, and no liability whatsoever is undertaken by the Auctioneers for the statements in the catalogue or announcements made at time of sale. The vendor who supplies such statements is alone responsible.
10. No undertaking of the Auctioneers or vendors or their servants to take charge of the lots or animals for sale, or to forward them to their destination. shall be held to impose any legal obligation or vitiate any of the foregoing conditions.
11. Any Medical Treatment to any animals must be advised by the Auctioneer for announcement at time of sale. The presence of any chemical or pharmaceutical substance in or on an animal or in its milk during the withdrawal period may render its sale void.
12. Should any question arise not provided for in the forgoing conditions, the decision of the Auctioneers shall be final, from which there shall be no appeal.
13. Neither the Auctioneers nor the sponsors incur liability for the return of Auction Fees where a claim IS made for return of purchase price of any lot sold at the sale.
14. The sale will be conducted in Guineas. Purchasers will pay VAT on Fees.
15. After Sale release of livestock or goods is by Pass Out issued by the Sale Office. This also includes unsold lots.
16. Each and every lot must be presented for sale in the auction ring in catalogue or numerical order. No Sale may be contemplated before such presentation. Lots not sold in the auction or present for demonstration purposes and subsequently sold privately on the premises must be recorded through the auctioneer's office and are subject to commission.
17. No electrical device may be connected to any socket in the show or sale premises unless it is fitted with an approved circuit breaking control. All equipment must be in up to date state of safety. Note. Sockets on sale rostrum are not suitable for blow driers.
18. Neither the Auctioneers, the Organisers, nor the Sponsors shall incur any liability for loss or inconvenience arising from postponement or cancellation of the event.

### NOTE.

No animal is considered to be delivered to the Show and Sale until placed in the pen or place of tying allotted. Access doors will permit vehicles and trailers to enter the building for loading or unloading. Delivery to purchaser will also be effected when the purchaser removes the animal from the pen, or otherwise takes charges of the animal. Under no circumstances may any animal be taken out of the building for loading. The trailer or lorry must be backed inside the doorway and the screen doors closed to the vehicle. Please remember to collect your Movement Permit before leaving. And please remember that a new purchase should be introduced to company when taken home - and not placed in solitary confinement on arrival in strange surroundings after transport!

**N.B.-** The Auctioneers reserve the right to refuse cheques as payment. All payments to be in sterling by Bank Draft or cash, or at current exchange rate. New customers should contact the Auctioneers in advance of sale to make arrangements for use of cheques.

# CLASS 7 FEMALES

**Lot**      **Mr J A Quail**  
**71**      **LYNDERG TINSEL**

**Born 26/03/2022**

**LDG22-3073**

**UK 9271872/1307-3**

Got by AI

Natural Calf

gs. PLUMTREE DEUS CQE08-003

ggs. CLOUGHHEAD UMPIRE HCX03-221

**Sire MERESIDE GODOLPHIN HCG11-424**

ggd. BANKDALE AMBER WLI05-095

gd. MERESIDE DAWNMARIE HCG08-132

ggs. ALASKA 81-23-276-752

ggd. MERESIDE ALECIA HCG05-747

gs. WILODGE VANTASTIC WEY04-037

ggs. WILODGE TONKA WEY02-002

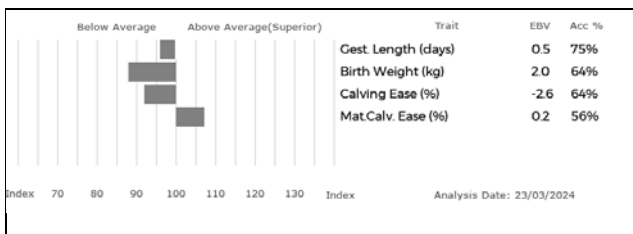
**Dam LYNDERG FAY LDG10-008**

ggd. RAVENELLE 23-51-224-583

gd. LYNDERG VANESSA LDG04-012

ggs. LUDO 19-95-012-472

ggd. ONDINE 19-98-001-300



Service Details      AI on 29/01/2024 with **LYNDERG DIMITRI LDG08-014**

AI'd on the 29th of January this year to Lynderg Dimitri.

**Lot 72 J & A Callion**  
**ASHHOLLOW UZEL**

**Born 03/01/2023**

Got by AI

Myostatin: Q204X/Q204X

**BOW23-6167**

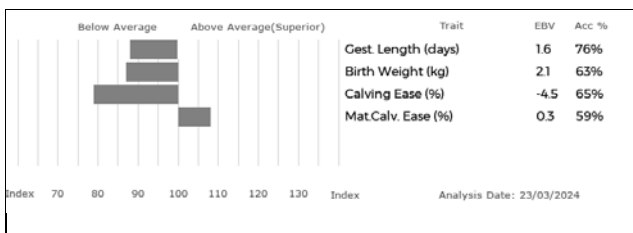
Embryo Calf

**UK 9633239/1616-7**

gs. GLENROCK VENTURA IE04-432  
**Sire AMPERTAINÉ ELGIN MGD09-039**  
 gd. AMPERTAINÉ CARLA MGD07-036

gs. TRUEMAN JAGGER SLN14-6436  
**Dam MELBREAK NASSIET CMS17-1604**  
 gd. MELBREAK GENEVA CMS11-001

ggs. GLENROCK SPARTACUS IE01-152  
 ggd. GLENROCK SASPIRILLA IE01-148  
 ggs. SAMY 23-02-773-556  
 ggd. CARMORN LULU MCN95-019  
 ggs. AMPERTAINÉ GIGOLO MGD11-051  
 ggd. TRUEMAN GRAZIA SLN11-006  
 ggs. WILODGE VANTASTIC WEY04-037  
 ggd. LYVENNET PARIS BJJ99-004



Melbreak Nassiet, Dam, is breeding consistently well in the herd and has been shown successfully as both a maiden heifer and senior cow. Uzel is only offered for sale as two further sisters have been retained in the herd.

**Lot  
73**

**Mr RAG Savage  
AGHADOLGAN USITTA**

**Born 28/04/2023**

**SLC23-2173**

**UK 9541606/217-3**

Got by AI

Natural Calf

gs. UPTONLEY INVINCIBULL PLP13-006

ggs. RONICK HAWK DY92-026

**Sire UPTONLEY LIVINGTHEDREAM PLP15-0023**

ggd. NEALFORD FLOWER NAD10-892

gd. PLAS GOLDDUST HTW11-007

ggs. COWIN DESTINY JFL08-010

ggd. SOAR BELLE HOJ06-012

gs. SYMPA 48-01-006-969

ggs. OCTOPUS 87-10-671-030

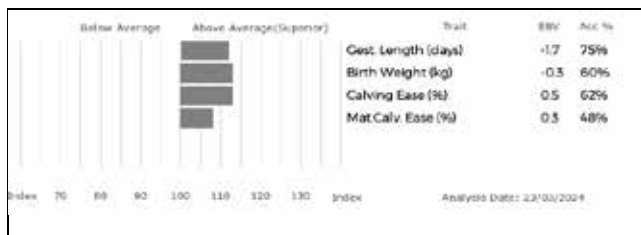
**Dam AGHADOLGAN MILAN SLC16-0622**

ggd. OPERETTE 48-98-133-040

gd. AGHADOLGAN FUNNYGIRL SLC10-025

ggs. WILODGE TONKA WEY02-002

ggd. BRONTEMOOR BOBBYDAZZLER PCI06-049



**Lot 74 Messrs John I & Shane J McGeehan**  
**SLIEVE URSULA**

**Born 04/05/2023**

**MRC23-9592**

**UK 9581574/0959-2**

Got by AI

Natural Calf

Myostatin: F94L/F94L

gs. VERCORS 19-31-741-997

ggs. NEUF 22-97-004-114

**Sire FUSCHIA 19-33-482-945**

ggd. NOISETTE 19-97-002-559

gd. TULIPE 19-31-191-915

ggs. MAS DU CLO 23-96-032-213

ggd. JONQUILLE 19-94-007-490

gs. AMPERTAINE MAJESTIC MGD16-1487

ggs. PLUMTREE FANTASTIC CQE10-023

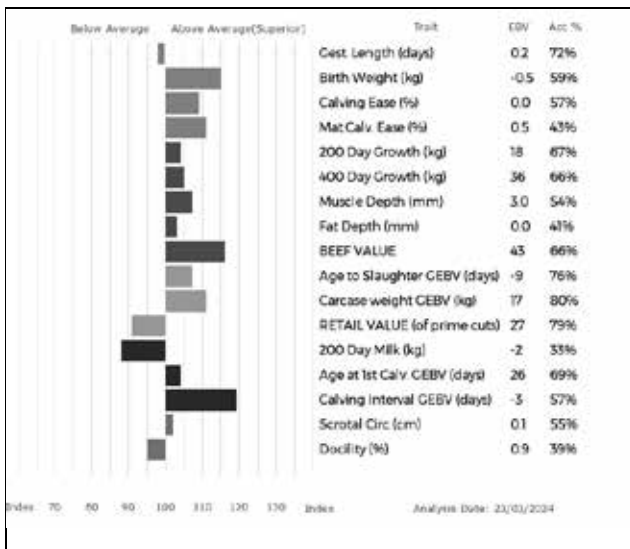
**Dam SLIEVE ROXY MRC20-9006**

ggd. AMPERTAINE JOY MGD14-9306

gd. SLIEVE NINJA MRC17-8387

ggs. TRUEMAN JAGGER SLN14-6436

ggd. BEARBROOK DAPHNE MSG08-012



Adjusted Wts(kg)	
100	167
200	314
300	460
400	0
500	0
Scanned	NO

SLIEVE URSULA is a very easy fleshing young heifer, with a double copy of the f94l gene..

**Lot 75 Mr RAG Savage**  
**AGHADOLGAN UTREASURE**

Born 12/05/2023

SLC23-2217

UK 9541606/221-7

Got by AI

Natural Calf

gs. LODGE HAMLET CBM12-346

ggs. SAPHIR 36-15-082-247

**Sire TELFERS MUNSTER TKF16-0679**

ggd. LODGE VIOLET CBM04-114

gd. TELFERS IMAGINATION TKF13-0625

ggs. GOLDIES COMET GS07-954

ggd. GOLDIES FLORIST GS10-1154

gs. SYMPA 48-01-006-969

ggs. OCTOPUS 87-10-671-030

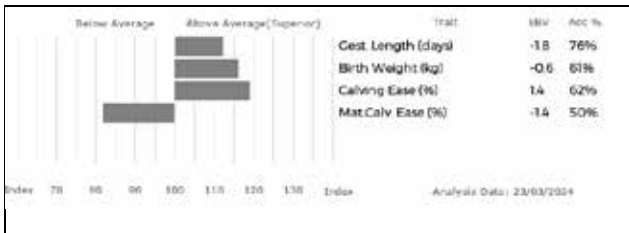
**Dam AGHADOLGAN FILLY SLC10-033**

ggd. OPERETTE 48-98-133-040

gd. CRAIGATOKE UNBREAKABLE CDZ03-026

ggs. GOLDIES OSWALD GS98-064

ggd. CRAIGATOKE REDLADY CDZ00-016



# CLASS 10 - FEMALES

76

## ASHHOLLOW UNICORN

Born 01/07/2023

BOW23-2455

UK 9636565/0245-5

Natural Calf

gs. NORMAN ELY NBB09-004

ggs. SAPHIR 36-15-082-247

Sire MILLGATE ROCKETMAN LFR20-8334

ggd. NORMAN BETRYS NBB06-019

gd. MILLGATE JILLY LFR14-5162

ggs. ROCKY 36-15-030-964

ggd. MILLGATE CATHY LFR07-029

gs. WILODGE VANTASTIC WEY04-037

ggs. WILODGE TONKA WEY02-002

Dam ASHHOLLOW SNOWDROP BOW21-1836

ggd. RAVENELLE 23-51-224-583

gd. HOMEBYRES FREESIA LAP10-082

ggs. KAPRICO DAVELLE SHJ08-004

ggd. HOMEBYRES DAHLIA LAP08-050



**Lot  
77**

**John O'Kane & Sons  
GLENEAGLE UPTOWNGIRL**

**Born 04/07/2023**

**OCH23-6095**

**UK 9491156/1609-5**

Got by AI

Embryo Calf

Myostatin: F94L/Q204X

gs. LOWERFFRYDD EMPIRE EBQ09-008

ggs. OBJAT 19-30-299-413

**Sire WHINFELLPARK LOMU JFQ15-1484**

ggs. DENTOX VALIUM WAY04-089

gd. WHINFELLPARK FEMI JFQ10-058

ggs. WILODGE CERBERUS WEY07-010

gs. ATTLA 36-15-076-572

ggd. SAFRAN B 86-01-141-217

**Dam MELBREAK RENNES CMS20-1803**

ggs. PACHA 36-15-109-210

gd. MELBREAK GENEVA CMS11-001

ggd. ORGIE 36-15-139-951

ggs. WILODGE VANTASTIC WEY04-037

ggd. LYVENNET PARIS BJY99-004



**Lot  
78**

**J & A Callion  
ASHHOLLOW UIMPRESS**

**Born 10/07/2023**

**BOW23-2477**

**UK 9636565/0247-7**

Natural Calf

gs. NORMAN ELY NBB09-004

ggs. SAPHIR 36-15-082-247

**Sire MILLGATE ROCKETMAN LFR20-8334**

ggd. NORMAN BETRYS NBB06-019

gd. MILLGATE JILLY LFR14-5162

ggs. ROCKY 36-15-030-964

gs. CONDOR 19-33-099-583

ggd. MILLGATE CATHY LFR07-029

**Dam MILLGATE IMPRESS LFR13-4882**

ggs. SUCRE 87-42-890-146

gd. KILCURRY CAILIN IE251022720201

ggd. SARAH 19-31-338-780

ggs. ROCKY 36-15-030-964

ggd. KILCURRY UNA IE251022780132



Millgate Impress, Dam, is a full sister to Millgate Fame



**Lot 79 Mr M Loughran  
MILLGATE UROCK**

**Born 23/08/2023**

**LFR23-9561**

**UK 9630001/2956-1**

Natural Calf

Myostatin: F94L/F94L

gs. TOMSCHOICE ORIFLAMME CJL18-0493

ggs. MERESIDE LEO HCG15-1818

**Sire KILCOR SYLVESTER 372219014630613**

ggd. TOMSCHOICE LACHIC CJL15-0348

gd. KILCOR NOLEEN 372219014640564

ggs. POWERHOUSE ITALIC PJH13-084

ggd. KILCOR HAYLEY IE291598960400

gs. MILLGATE INVEST LFR13-4786

ggs. SWARLAND EDDIE SOH09-010

**Dam MILLGATE SWEET LFR21-8485**

ggd. MILLGATE EMMA LFR09-002

gd. KILCURRY CAILIN IE251022720201

ggs. ROCKY 36-15-030-964

ggd. KILCURRY UNA IE251022780132



**Lot 80 Mr M Loughran  
MILLGATE ULADY**

**Born 25/09/2023**

**LFR23-9594**

**UK 9630001/2959-4**

Natural Calf

Myostatin: F94L/NT821

gs. BAVARDAGE 22-57-773-618

ggs. ONDIT 36-15-069-746

**Sire CARROWREAGH NAVIGATOR  
IE372219211880502**

ggd. RIDELLE 22-57-773-207

gd. CARROWREAGH ERICA IE311411990273

ggs. WILODGE VANTASTIC WEY04-037

gs. MILLGATE JACK LFR14-5136

ggd. NINI 87-97-014-340

**Dam MILLGATE PAULA LFR19-7586**

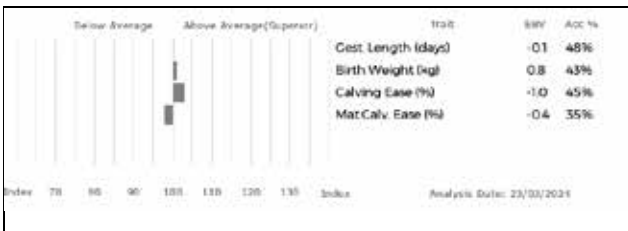
ggs. MILLGATE FAME LFR10-015

gd. MILLGATE IONA LFR13-4646

ggd. MILLGATE ELLA LFR09-003

ggs. SWARLAND EDDIE SOH09-010

ggd. MILLGATE DAZZLER LFR08-036



# semenstore.co.uk

quality semen on-line

Semenstore is a practical one-stop semen shop for vendors and buyers.

The Semenstore features:

On-line semen purchasing

Automated service

Payment collection

Professional marketing

Semen for all markets

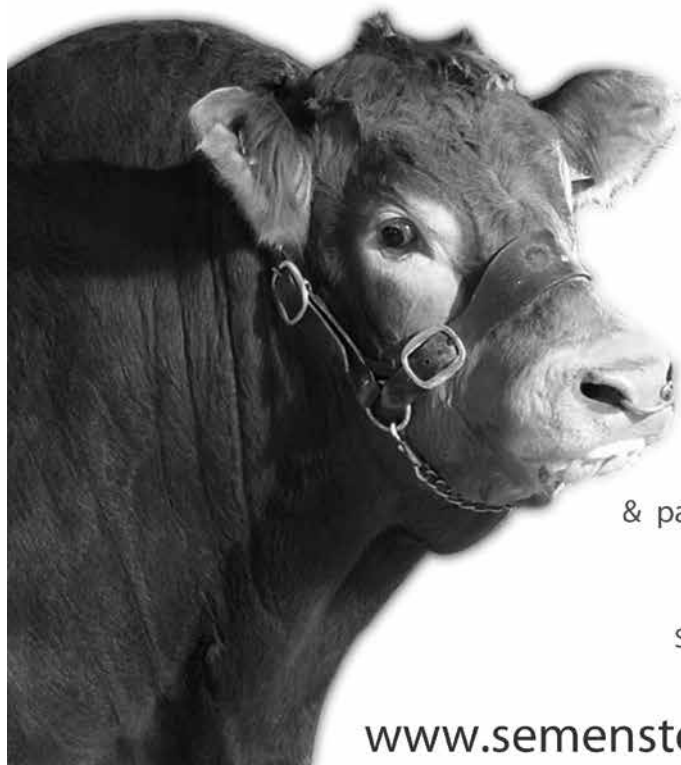
Export and domestic

Competitive pricing and costs

Unique offers & packages

One-stop Semen shop

[www.semenstore.co.uk](http://www.semenstore.co.uk)



---

# NI LIMOUSIN CATTLE CLUB

## – Membership Application Form –

Surname

---

Christian Name

---

Address

---

---

Postcode

---

Telephone No.

---

Herd Prefix

---

New Membership Fee £25 payable by Cheque or Cash. Future membership fees payable by Standing Order.

---

Please complete Standing Order below.

---

**TO THE MANAGER**

BANK LTD.

---

Branch Address

---

Your Details: Sort Code

Account Number

---

Please pay to the First Trust Bank, Cregagh Road, Belfast,

Sort Code 93.83.43      Account Number 21053092

For the credit of The N I Limousin Cattle Club

Reference: (Your Name/Prefix)

---

£25 payable annually on 1st January until further notice.

Signature:

---

Please post to: N I Limousin Cattle Club  
c/o Club Secretary Lorna Hunter, 58 Ballybracken Road,  
Doagh, Ballyclare, BT39 0TQ

---

---

# Prize List

Judge: Martin Conway

	1st	2nd	3rd	4th
Class 1				
Class 2				
Class 3				
Class 4				
Class 5				
Class 6				
Class 7				
Class 8				
Class 9				
Class 10				

**Champion & Reserve Senior Bulls to be sold after Lot 15**  
**Champion & Reserve Intermediate Bulls to be sold after Lot 34**  
**Champion & Reserve Junior Bulls to be sold after Lot 45**  
**Champion and Reserve Females to be sold after Lot 70**  
**Male & Female Champions kindly sponsored by N I Limousin Cattle Club**

---

# Championship Winners

Senior Male Champion	Lot
Reserve Senior Male Champion	Lot

Intermediate Male Champion	Lot
Reserve Intermediate Male Champion	Lot

Junior Male Champion	Lot
Reserve Junior Male Champion	Lot

Overall Male Champion	Lot
Reserve Overall Male Champion	Lot

Female Champion	Lot
Reserve Female Champion	Lot

Overall Supreme Champion	Lot
Reserve Overall Supreme Champion	Lot

---

# 2024 Future Events

15th - 18th May

**Balmoral Show**

25th October

**Bull and female show and sale,  
Ballymena livestock market**



LIMOUSIN

**The British Limousin Cattle Society**

Concorde House, 24 Warwick New Road, Leamington Spa, Warwickshire, CV32 5JG

**T** 02476 696500    **E** [info@limousin.co.uk](mailto:info@limousin.co.uk)



British Limousin Cattle Society    [@britishlimousincattlesociety](https://www.facebook.com/britishlimousincattlesociety)



[LimousinUK](https://twitter.com/LimousinUK)

# ARE YOU TAG READY?

Countryside

Services

Proudly supplying

Caisley™

## FLEXOPLUS GENO TAG SET (BVD)

- BVD tag range
- Tissue tags come equipped in one strip
- A unique tamperproof tissue testing system
- Tissue vial immediately sealed in applicator once tagged
- Barcode & Management Space print options available



## FLEXOPLUS GENO TAG SET (BVD & DNA)

- BVD & DNA combination tag range
- A popular choice among many breed societies
- Determine parentage as well as identifying most efficient cows
- Only one applicator needed for both tagging and testing



## GENOTRONIC TAG SET

- Electronic tag range
- Lifetime read combined with superior quality in a HDX or FDX format
- The unique sealed design eliminates moisture coming into contact with EID components
- EID transponder design gives an accurate read from all angles



## MANAGEMENT CATTLE TAGS

- Variety of tags for many different management purposes including:
- Reusable Flexotronic Button
- Green Flexoplus Geno Button
- Blank/Printed Management Tags



\*Universal Caisley Applicator inserts all Caisley tag range



T. 028 8778 9770

E. [info@countrysideservices.com](mailto:info@countrysideservices.com)

W. [www.countrysideservices.com](http://www.countrysideservices.com)



97 Moy Road, Dungannon, Co. Tyrone, BT71 7DX